

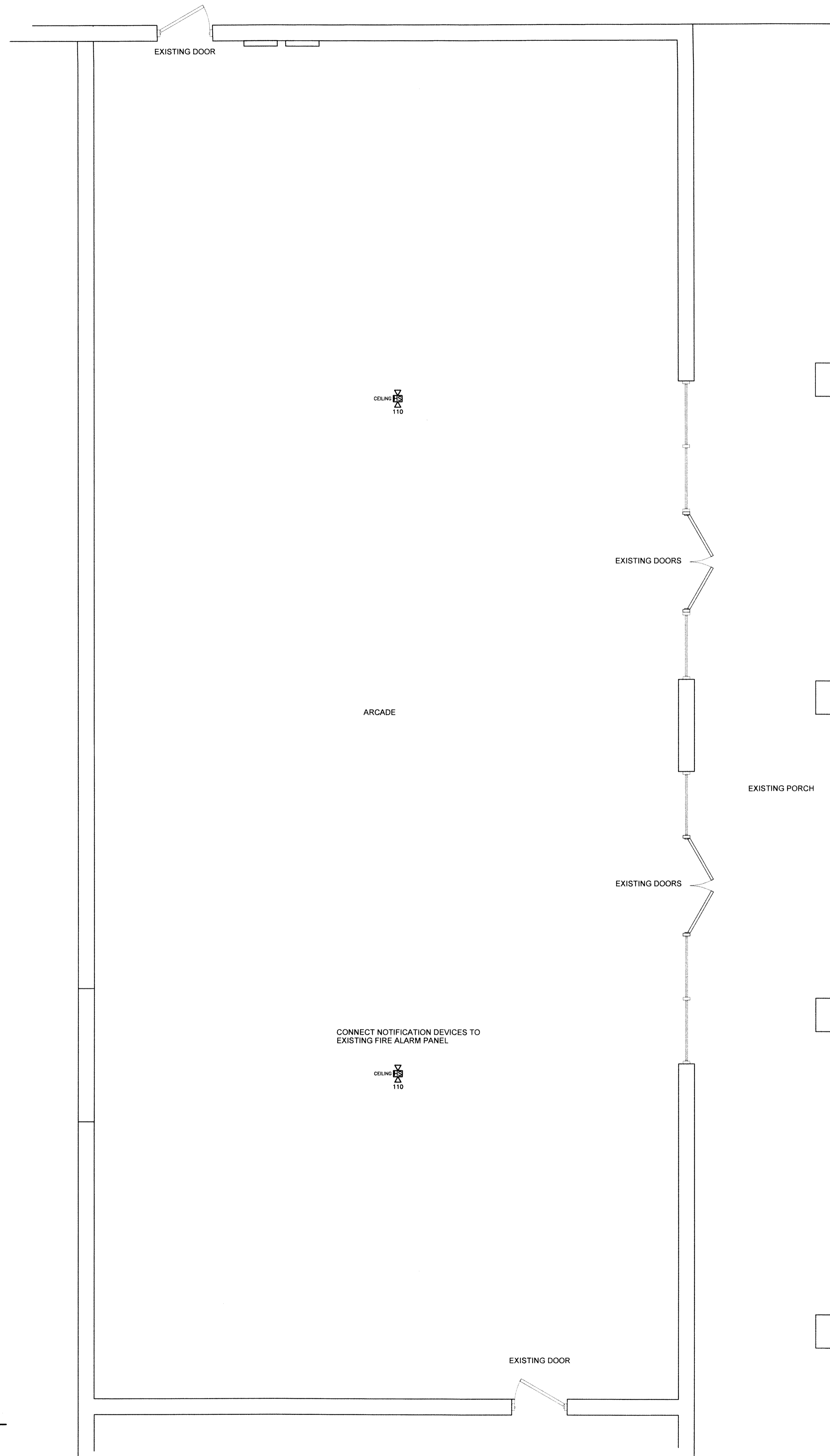
FIRE ALARM LEGEND		
SYM.	DESCRIPTION	REMARKS
VS	AUDIBLE/VISUAL NOTIFICATION APPLIANCE "HORN STROBE" (120 dBA MAX. & 15 CANDELA)	MOUNT BOD 90° AFF
VS <sub>30</sub>	AUDIBLE/VISUAL NOTIFICATION APPLIANCE "HORN STROBE" (120 dBA MAX. & 30 CANDELA)	MOUNT BOD 90° AFF
VS <sub>60</sub>	AUDIBLE/VISUAL NOTIFICATION APPLIANCE "HORN STROBE" (120 dBA MAX. & 60 CANDELA)	MOUNT BOD 90° AFF
VS <sub>110</sub>	AUDIBLE/VISUAL NOTIFICATION APPLIANCE "HORN STROBE" (120 dBA MAX. & 110 CANDELA)	MOUNT BOD 90° AFF
VS	VISUAL NOTIFICATION APPLIANCE "STROBE" (15 CANDELA)	MOUNT BOD 90° AFF
VS <sub>30</sub>	VISUAL NOTIFICATION APPLIANCE "STROBE" (30 CANDELA)	MOUNT BOD 90° AFF
VS <sub>60</sub>	VISUAL NOTIFICATION APPLIANCE "STROBE" (60 CANDELA)	MOUNT BOD 90° AFF
VS <sub>110</sub>	VISUAL NOTIFICATION APPLIANCE "STROBE" (110 CANDELA)	MOUNT BOD 90° AFF
P	MANUAL ALARM PULL STATION	MOUNT TOD 48" AFF
H	AREA HEAT DETECTOR	CEILING MOUNTED UNO
S	AREA SMOKE DETECTOR	CEILING MOUNTED UNO
SD	DUCT SMOKE DETECTOR	PHOTOELECTRIC TYPE, COORDINATE TUBE LENGTH W/M.C.
FACP	FIRE ALARM CONTROL PANEL	(SEE PLANS FOR LOCATION)
FA	FIRE ALARM ANNUNCIATOR	(SEE PLANS FOR LOCATION)
FS	SPRINKLER RISER FLOW SWITCH	(SEE PLANS FOR LOCATION)
CS	SRPINKLER RISER TAMPER SWITCH	(SEE PLANS FOR LOCATION)

ABBREVIATIONS:	
G.C.	GENERAL CONTRACTOR
P.C.	PLUMBING CONTRACTOR
M.C.	MECHANICAL CONTRACTOR
E.C.	ELECTRICAL CONTRACTOR
AFF	ABOVE FINISHED FLOOR
UNO	UNLESS NOTED OTHERWISE
BOD	BOTTOM OF DEVICE
TOD	TOP OF DEVICE

**FIRE ALARM NOTES:**

- FIRE ALARM PLANS ARE INTENDED TO PROVIDE INFORMATION FOR INSTALLATION OF A COMPLETE SYSTEM. PROVIDE ALL ESSENTIAL LABOR, MATERIALS & DEVICES REQUIRED TO PRODUCE A QUALITY END PRODUCT.
- FIRE ALARM CONTRACTOR SHALL REVIEW & BECOME FAMILIAR WITH THE WORK OF ALL TRADES FOR PURPOSES OF COORDINATION AND ROUTING. CONTRACTOR SHALL PROVIDE REQUIRED PLANNING, COORDINATION AND SEQUENCING OF FIRE ALARM INSTALLATION WITH BUILDING COMPONENTS AND OTHER TRADES.
- ALL WORK SHALL COMPLY WITH THE LOCAL FIRE CODE, THE NATIONAL ELECTRICAL CODE (NEC) AND NFPA 72. WORKMANSHIP SHALL MEET OR EXCEED INDUSTRY STANDARDS.
- FIRE ALARM CONTRACTOR SHALL VERIFY THAT SECONDARY SUPPLY HAS SUFFICIENT CAPACITY TO OPERATE FOR 24 HOURS WHEN SYSTEM IS FUNCTIONING IN A NON-ALARM CONDITION. AT THE END OF THAT PERIOD, THE SECONDARY SUPPLY SHALL BE CAPABLE OF OPERATING IN ALARM MODE FOR 5 MINUTES. FIRE ALARM INSTALLER SHALL CERTIFY CALCULATED CAPACITY TO DRIVE THE SYSTEM PER NFPA 72 ON FORM FOR RECORD OF COMPLETION.
- ALL WIRING, DEVICES AND OTHER LIKE MATERIALS SHALL BE UL LISTED & LABELED.
- CONDUIT SHALL BE EMT WITH COMPRESSION TYPE FITTINGS WHERE EXPOSED OR AS REQUIRED BY LOCAL AUTHORITY HAVING JURISDICTION.
- FIRE ALARM CONTRACTOR SHALL PROVIDE AN ADDRESS MAP AT ANNUNCIATOR AND MAIN FACP LOCATIONS. PROVIDE FRAMED OPERATING INSTRUCTIONS AT MAIN FACP.
- VISUAL NOTIFICATION APPLIANCES MUST BE SYNCHRONIZED WHERE MORE THAN TWO APPLIANCES CAN BE VIEWED AT THE SAME TIME.
- AUDIBLE NOTIFICATION APPLIANCE SOUND LEVELS SHALL BE FIELD-TESTED. SOUND LEVEL SHALL BE 15 dBA MINIMUM ABOVE AMBIENT SOUND LEVEL IN ROOM OR SPACE; OR 5 dBA ABOVE ANY MAXIMUM SOUND LEVEL HAVING A 60 SECOND MINIMUM DURATION - WHICHEVER IS LOUDER. SOUND PATTERN SHALL BE OF THREE BEAT TEMPORAL PATTERN.



**1 FIRE ALARM PLAN**  
SCALE: 1/4"=1'-0"

COPYRIGHT 2023 © SMITH ENGINEERING AND DESIGN, P.A. - ALL RIGHTS RESERVED

**SMITH ENGINEERING AND DESIGN, P.A.**  
1103 Gracie Place, Suite A  
Goldsboro, N.C. 27534  
Corporation License No. C-2241  
Phone: 919-736-2141 Fax: 919-736-2142

NORTH CAROLINA  
REGISTERED PROFESSIONAL ENGINEER  
024916  
1-24-23  
JOE T. SMITH, P.E.

**Gregory DEVELOPMENT LLC**  
9541 Industry Drive  
Raleigh, NC 27603 919-779-3522

REV#	DATE	DESCRIPTION

**Buffaloe Lanes Arcade Upfit**  
100 West Jackson Blvd  
Erwin, NC 28339

DATE: 26 January 2023  
DRAWN BY: J.S.  
SCALE: 1/4" = 1'-0"

**FA-1**