

LIGHT FIXTURE SCHEDULE							
MARK	DESCRIPTION	MANUFACTURER	CATALOG NUMBER	LAMPS	BALLASTS	WATTAGE	REMARKS
A	8' LED STRIPLIGHT	LITHONIA	TZ1D L96 14000LM FST MVOLT 40K 80CRI WH	LED		121	INCLUDE HC36 HANGER CHAIN
B	2X4 LED FLAT PANEL LAY-IN	LITHONIA	CPANL 2X4 40/50/60LM 35K-40LM	LED		42.0	INCLUDE WSX D DIMMING OCCUPANCY WALL SWITCH
C	2X4 LED FLAT PANEL LAY-IN	LITHONIA	CPANL 2X4 40/50/60LM 35K-40LM	LED		32.0	INCLUDE WSX D DIMMING OCCUPANCY WALL SWITCH
D	LED WALLPACK	-		LED		28	SELECTED BY OWNER
F	GOOSENECK EXTERIOR LIGHT	-		LED		52	SELECTED BY OWNER
EM	EMERGENCY LIGHT WITH BATTERY BACKUP	MCPHILBEN	CAXR6L24W6				
EX	LED TYPE EXIT LIGHT WITH BATTERY BACKUP	MCPHILBEN	CXXL3RW				
EM2	EMERGENCY LIGHT REMOTE WEATHERHEAD(S)	MCPHILBEN	CR2CSWA				

* ALL FIXTURE SELECTIONS TO BE VERIFIED BY OWNER BEFORE PURCHASE. *
 ** SIGN LETTERING TO BE ON TIMECLOCK OR PHOTOCELL

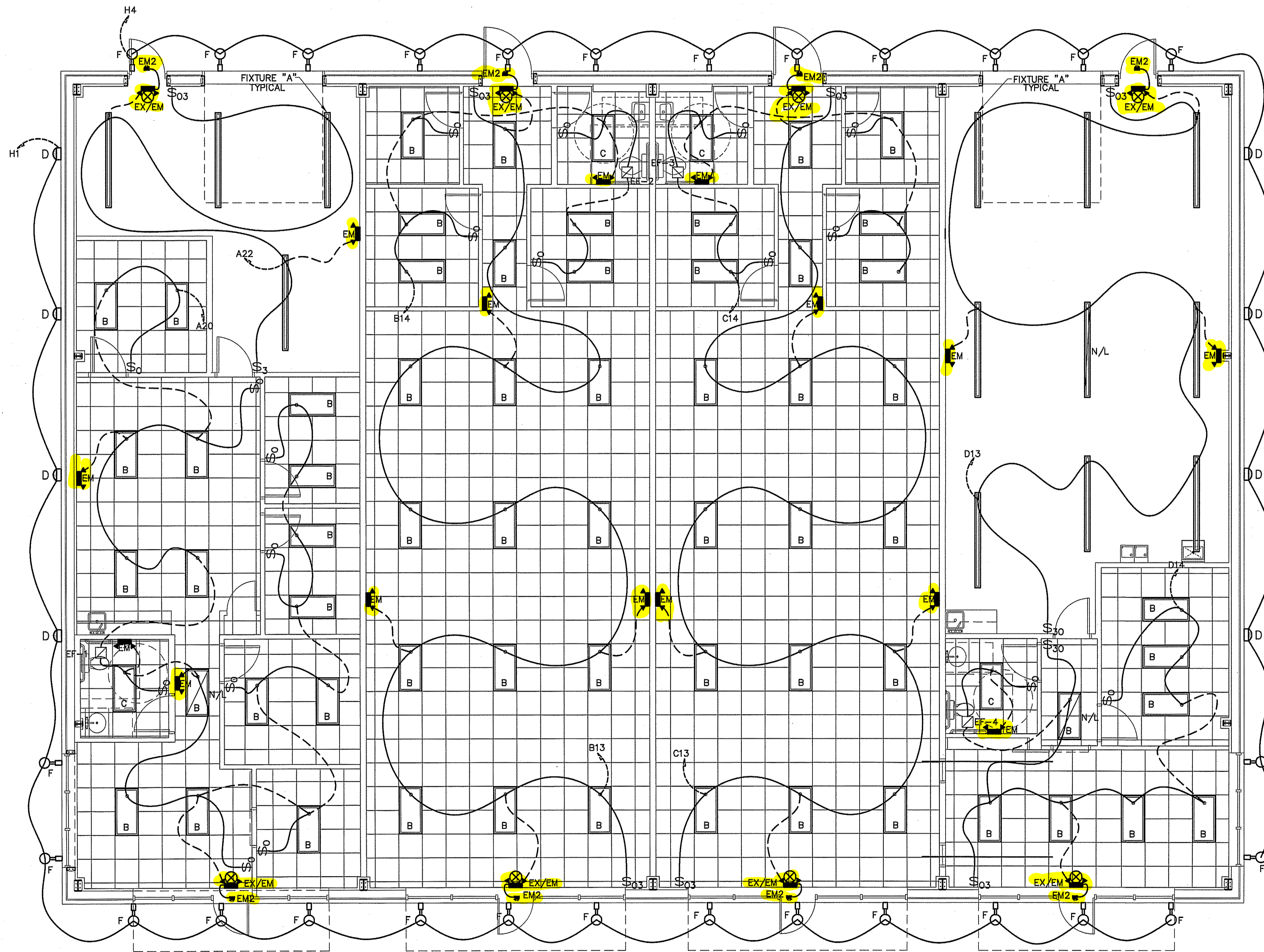
LIGHTING DATA FOR N.C. ENERGY CODE (TENANT 1)					
AREA USE	AREA FT ²	WATTS PER FT ² ALLOWED	TOTAL WATTS ALLOWED	TOTAL WATTS USED	TOTAL WATTS LEFT OVER
WAREHOUSE	500	1.2	600	484	116
OFFICE	1,250	1.3	1,625	704	921
TOTAL	1,750		2,225	1,188	1,037

LIGHTING DATA FOR N.C. ENERGY CODE (TENANT 2 & 3)					
AREA USE	AREA FT ²	WATTS PER FT ² ALLOWED	TOTAL WATTS ALLOWED	TOTAL WATTS USED	TOTAL WATTS LEFT OVER
OFFICE (TENANT 2)	1,750	1.3	2,275	830	1,445
OFFICE (TENANT 3)	1,750	1.3	2,275	830	1,445
TOTAL	3,500		2,275	1,660	2,890

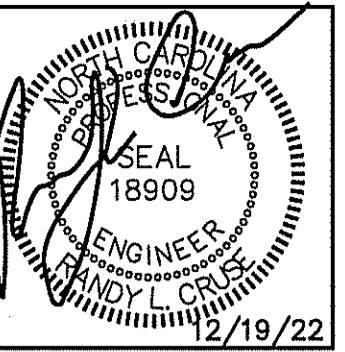
LIGHTING DATA FOR N.C. ENERGY CODE (TENANT 4)					
AREA USE	AREA FT ²	WATTS PER FT ² ALLOWED	TOTAL WATTS ALLOWED	TOTAL WATTS USED	TOTAL WATTS LEFT OVER
WAREHOUSE	1,200	1.2	1,440	1,089	351
OFFICE	550	1.3	715	326	389
TOTAL	1,750		2,155	1,415	740

Review For Fire Code Compliance
 Leslie Jackson
 Harnett County
 01/23/2023 2:26:10 PM

ELECTRICAL LEGEND	
MARK	DESCRIPTION
⊕	QUAD RECEPTACLE
⊕	DUPLEX RECEPTACLE
⏏	TIMER WITH NO HOLD MECHANISM
⊕	CEILING MOUNTED DUPLEX RECEPTACLE
▭	FLUORESCENT FIXTURE
↔	SWITCHED BRANCH CIRCUIT
↔	UNSWITCHED BRANCH CIRCUIT
↔	120/208 VOLT CIRCUIT
Ⓜ	MOTION DETECTING SINGLE-POLE SWITCH ON TIMER
⊗	'EXIT' LIGHT FIXTURE, TYPE 'EX'
⊕	BATTERY OPERATED EMERG. LT. (2-HEAD, WALL MTD.)
Ⓜ	MOTION DETECTING 3-WAY SWITCH (4-WAY SWITCH) WITH TIMER
⊕	FUSED DISCONNECT SWITCH
⊕	CEILING MOUNTED FUSED DISCONNECT SWITCH
△	TELEPHONE
⊕	JUNCTION BOX
Ⓜ	SINGLE POLE SWITCH OR TIMER AS APPLICABLE
▭	UNSWITCHED FIXTURE
Ⓜ	OCCUPANCY SENSING SINGLE-POLE SWITCH NOT ON TIMER
⊕	DUPLEX RECEPTACLE
⊕	EMERGENCY LIGHT REMOTE WEATHERHEAD(S)

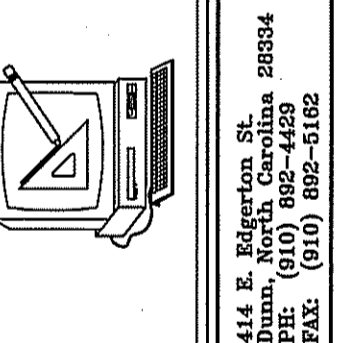


ELECTRICAL LIGHTING PLAN
 SCALE: 3/16" = 1'-0"



UP-FIT PLANS FOR:
 T&L COATS
 BUILDING #2
 COATS, NORTH CAROLINA

REVISIONS	
NO.	



Cruse and Associates, P.A.
 LICENSE NO. C-1721

THESE DOCUMENTS ARE INSTRUMENTS OF SERVICE AND AS SUCH THESE DRAWINGS, DESIGNS, AND DESIGN CONCEPTS PRESENTED REMAIN THE PROPERTY OF THE ENGINEER. PUBLISH OR DUPLICATE THE DRAWINGS OR DESIGNS ONLY WITH THE WRITTEN PERMISSION OF THE ENGINEER.
 © COPY RIGHT

DATE 12-19-22
 DRAWN BY BAM
 JOB NO. 22-60

SHEET NO.
 E-1 OF 4