

**EXIT REQUIREMENTS:
NUMBER AND ARRANGEMENTS OF EXITS**

FLOOR, ROOM OR SPACE DESIGNATION	MINIMUM NO. OF EXITS		TRAVEL DISTANCE		ARRANGEMENT MEANS OF EGRESS 1,3 (SECTION 1016-1021)	
	REQ'D.	SHOWN ON PLANS	ALLOWABLE TRAVEL DISTANCE (TABLE 1017.2)	ACTUAL TRAVEL DISTANCE SHOWN ON PLANS	REQUIRED DISTANCE BETWEEN EXIT DOORS	ACTUAL DISTANCE SHOWN ON PLANS
BUSINESS (TENANT 1)	2	2	200'	63'-10"	35'-8"	69'-0"
BUSINESS (TENANT 2)	2	2	200'	46'-2"	35'-8"	69'-0"
BUSINESS (TENANT 3)	2	2	200'	46'-0"	35'-8"	69'-0"
BUSINESS (TENANT 4)	2	2	200'	59'-1"	35'-8"	69'-0"

- CORRIDOR DEAD ENDS (SECTION 1020.4)
- BUILDINGS WITH SINGLE EXITS (TABLE 1006.3.2(2)), SPACES WITH ONE MEANS OF EGRESS (TABLE 1006.2.1)
- COMMON PATH OF TRAVEL (SECTION 1029.8)

EXIT WIDTH

USE GROUP OR SPACE DESCRIPTION	(a)		CALCULATED OCCUPANT LOAD (a/b)	(c)		EXIT WIDTH (in)				
	AREA ¹ SQ. FT.	AREA ¹ PER OCCUPANT (TABLE 1004.1.2)		EGRESS WIDTH PER OCCUPANT (TABLE 1005.1)	REQUIRED WIDTH (SECTION 1005.1) (a/b) x c		ACTUAL WIDTH SHOWN ON PLANS			
					STAIR	LEVEL	STAIR	LEVEL	STAIR	LEVEL
BUSINESS (TENANT 1)	1,750	100 GROSS	18	N/A	.2	N/A	3.6"	N/A	70"	70"
BUSINESS (TENANT 2)	1,750	100 GROSS	18	N/A	.2	N/A	3.6"	N/A	70"	70"
BUSINESS (TENANT 3)	1,750	100 GROSS	18	N/A	.2	N/A	3.6"	N/A	70"	70"
BUSINESS (TENANT 4)	1,750	100 GROSS	18	N/A	.2	N/A	3.6"	N/A	70"	70"

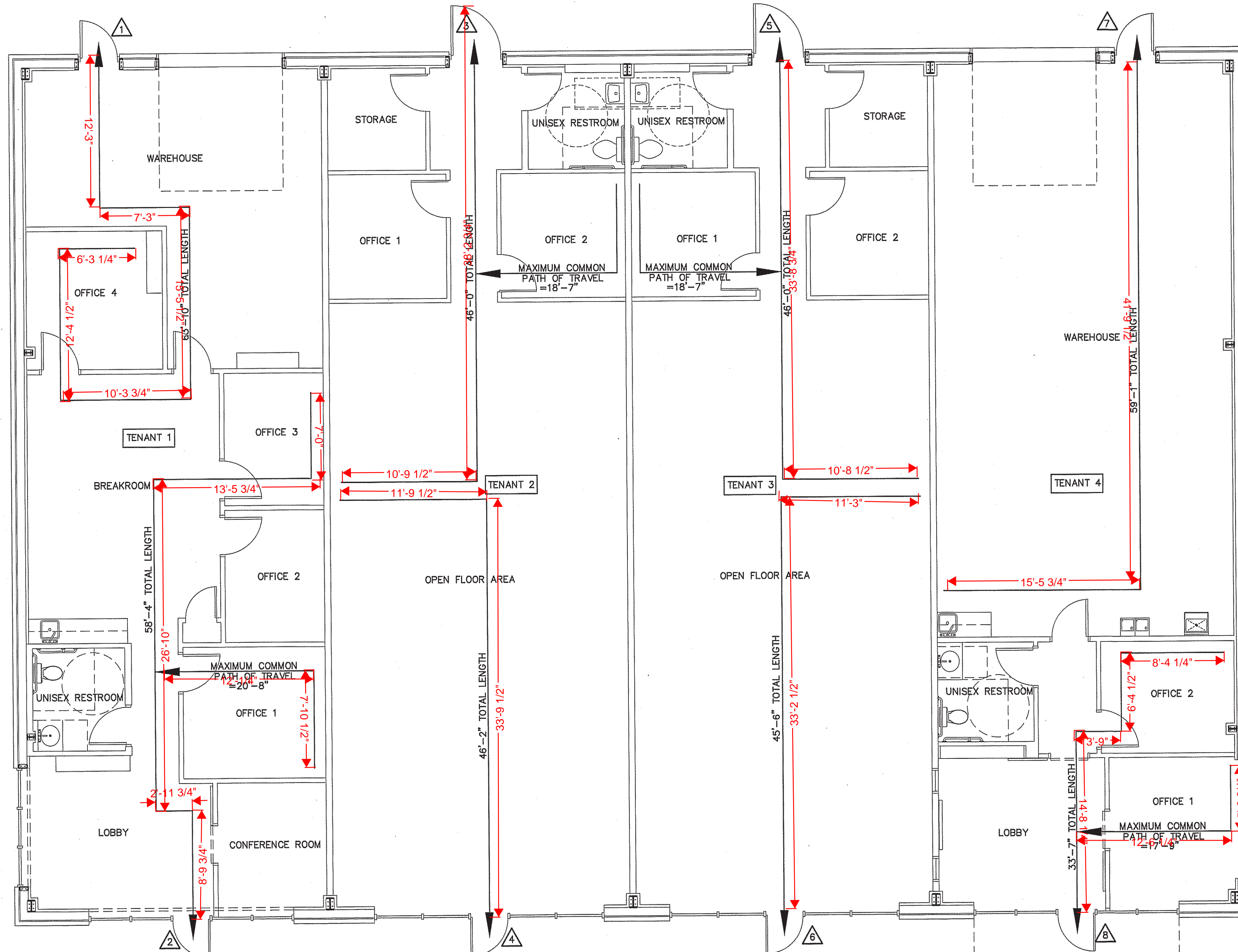
- SEE TABLE 1004.1.2 TO DETERMINE WHETHER NET OR GROSS AREA IS APPLICABLE. SEE DEFINITION "AREA, GROSS" AND "AREA, NET" (SECTION 1002, DEFINED IN CHAPTER 2)
- MINIMUM STAIRWAY WIDTH (SECTION 1011.2); MIN. CORRIDOR WIDTH (SECTION 1020.2); MIN. DOOR WIDTH (SECTION 1010.1.1)
- MINIMUM WIDTH OF EXIT PASSAGEWAY (SECTION 1024)
- SEE SECTION 1005.6 FOR CONVERGING EXITS.
- THE LOSS OF ONE MEANS OF EGRESS SHALL NOT REDUCE THE AVAILABLE CAPACITY TO LESS THAN 50% OF THE TOTAL REQUIRED (SECTION 1005.5)
- ASSEMBLY OCCUPANCIES (SECTION 1029)

LIFE SAFETY PLAN REQUIREMENTS:

- ☑ FIRE AND/OR SMOKE RATED WALL LOCATIONS (CHAPTER 7) - SEE NOTE 1
- ☑ ASSUMED AND REAL PROPERTY LINE LOCATIONS - SEE NOTE 2
- ☑ EXTERIOR WALL OPENING AREA WITH RESPECT TO DISTANCE TO ASSUMED PROPERTY LINES (705.8) - SEE NOTE 3
- ☑ OCCUPANCY TYPES FOR EACH AREA AS IT RELATES TO OCCUPANT LOAD CALCULATION (TABLE 1004.1.2)
- ☑ OCCUPANT LOADS FOR EACH AREA
- ☑ EXIT ACCESS TRAVEL DISTANCES (1017)
- ☑ COMMON PATH OF TRAVEL DISTANCES (1006.2.1 & 1006.3.2(1))
- ☑ DEAD END LENGTHS (1020.4) - SEE NOTE 4
- ☑ CLEAR EXIT WIDTHS FOR EACH EXIT DOOR
- ☑ MAXIMUM CALCULATED OCCUPANT LOAD CAPACITY EACH EXIT DOOR CAN ACCOMMODATE BASED ON EGRESS WIDTH (1005.3)
- ☑ ACTUAL OCCUPANT LOAD FOR EACH EXIT DOOR
- ☑ A SEPARATE SCHEMATIC PLAN INDICATING WHERE FIRE RATED FLOOR/CEILING AND/OR ROOF STRUCTURE IS PROVIDED FOR PURPOSES OF OCCUPANCY SEPARATION. SEE NOTE 5
- ☑ LOCATION OF DOORS WITH PANIC HARDWARE (1008.1.10) - SEE NOTE 6
- ☑ LOCATION OF DOORS WITH DELAYED EGRESS LOCKS AND THE AMOUNT OF DELAY (1008.1.9.7) - SEE NOTE 7
- ☑ LOCATION OF DOORS WITH ELECTROMAGNETIC EGRESS LOCKS (1008.1.9.8) - SEE NOTE 7
- ☑ LOCATION OF DOORS EQUIPPED WITH HOLD-OPEN DEVICES - SEE NOTE 7
- ☑ LOCATION OF EMERGENCY ESCAPE WINDOWS (1029) - SEE NOTE 7
- ☑ THE SQUARE FOOTAGE OF EACH FIRE AREA (902) - SEE NOTE 8
- ☑ THE SQUARE FOOTAGE OF EACH SMOKE COMPARTMENT (407.5) - SEE NOTE 9
- ☐ NOTE ANY CODE EXCEPTIONS OR TABLE NOTES THAT MAY HAVE BEEN UTILIZED REGARDING THE ITEMS ABOVE

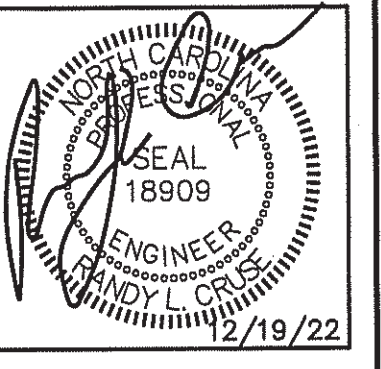
LIFE SAFETY PLAN NOTES:

- NO RATED WALLS.
- ALL ASSUMED AND REAL PROPERTY LINES >30'.
- UNLIMITED (ALL 30' OR GREATER)
- NO DEAD ENDS; 20' ALLOWED.
- NO RATING REQUIRED THIS STRUCTURE.
- PANIC HARDWARE NOT REQUIRED.
- NO DELAYED EGRESS LOCKS, ELECTROMAGNETIC LOCKS, HOLD OPEN DEVICES, OR EMERGENCY ESCAPE WINDOWS
- FIRE AREAS DO NOT EXCEED CODE ALLOWANCE
- BUILDING MEETS CODE REQUIREMENTS WITHOUT SUBDIVISION INTO SMOKE COMPARTMENTS; NO SMOKE COMPARTMENTS



LIFE SAFETY PLAN
SCALE: 3/16" = 1'-0"

- △ 1 35" CLEAR WIDTH DIVIDED BY .2" = 175 OCCUPANTS
CALCULATED OCCUPANCY PER EXIT = 9 PEOPLE
CALCULATED OCCUPANCY DOES NOT EXCEED MAXIMUM CAPACITY OF EXIT.
- △ 2 35" CLEAR WIDTH DIVIDED BY .2" = 175 OCCUPANTS
CALCULATED OCCUPANCY PER EXIT = 9 PEOPLE
CALCULATED OCCUPANCY DOES NOT EXCEED MAXIMUM CAPACITY OF EXIT.
- △ 3 35" CLEAR WIDTH DIVIDED BY .2" = 175 OCCUPANTS
CALCULATED OCCUPANCY PER EXIT = 9 PERSON
CALCULATED OCCUPANCY DOES NOT EXCEED MAXIMUM CAPACITY OF EXIT.
- △ 4 35" CLEAR WIDTH DIVIDED BY .2" = 175 OCCUPANTS
CALCULATED OCCUPANCY PER EXIT = 9 PEOPLE
CALCULATED OCCUPANCY DOES NOT EXCEED MAXIMUM CAPACITY OF EXIT.
- △ 5 35" CLEAR WIDTH DIVIDED BY .2" = 175 OCCUPANTS
CALCULATED OCCUPANCY PER EXIT = 9 PERSON
CALCULATED OCCUPANCY DOES NOT EXCEED MAXIMUM CAPACITY OF EXIT.
- △ 6 35" CLEAR WIDTH DIVIDED BY .2" = 175 OCCUPANTS
CALCULATED OCCUPANCY PER EXIT = 9 PEOPLE
CALCULATED OCCUPANCY DOES NOT EXCEED MAXIMUM CAPACITY OF EXIT.
- △ 7 35" CLEAR WIDTH DIVIDED BY .2" = 175 OCCUPANTS
CALCULATED OCCUPANCY PER EXIT = 9 PERSON
CALCULATED OCCUPANCY DOES NOT EXCEED MAXIMUM CAPACITY OF EXIT.
- △ 8 35" CLEAR WIDTH DIVIDED BY .2" = 175 OCCUPANTS
CALCULATED OCCUPANCY PER EXIT = 9 PEOPLE
CALCULATED OCCUPANCY DOES NOT EXCEED MAXIMUM CAPACITY OF EXIT.



UP-FIT PLANS FOR:
T&L COATS
BUILDING #2
COATS, NORTH CAROLINA

REVISIONS	
NO.	

414 E. Blount St.
Raleigh, NC 27601
TEL: (919) 882-4459
FAX: (919) 882-5162

Cruse And Associates, P.A.
LICENSE NO.: C-1721

THESE DOCUMENTS ARE INSTRUMENTS OF SERVICE AND AS SUCH THESE DRAWINGS, DESIGNS, AND DESIGN CONCEPTS PRESENTED REMAIN THE PROPERTY OF THE ENGINEER. PUBLISH OR DUPLICATE THE DRAWINGS OR DESIGNS ONLY WITH THE WRITTEN PERMISSION OF THE ENGINEER.
© COPY RIGHT

DATE 12-19-22
DRAWN BY BAM
JOB NO. 22-60

SHEET NO.
LS-1 OF 1

THIS FACILITY HAS NO STORAGE ABOVE 12' A.F.F. AND IS NOT INTENDED FOR USE AS VEHICLE STORAGE, PARKING GARAGE OR REPAIR GARAGE.

NOTE:
AREA/ROOM/SPACE DESIGNATIONS USED ON LIFE SAFETY PLANS ARE EXCLUSIVE TO LIFE SAFETY PLAN ONLY, AND ARE NOT INDICATIVE OF ANY ACTUAL SPACE DESIGNATIONS USED ELSEWHERE.