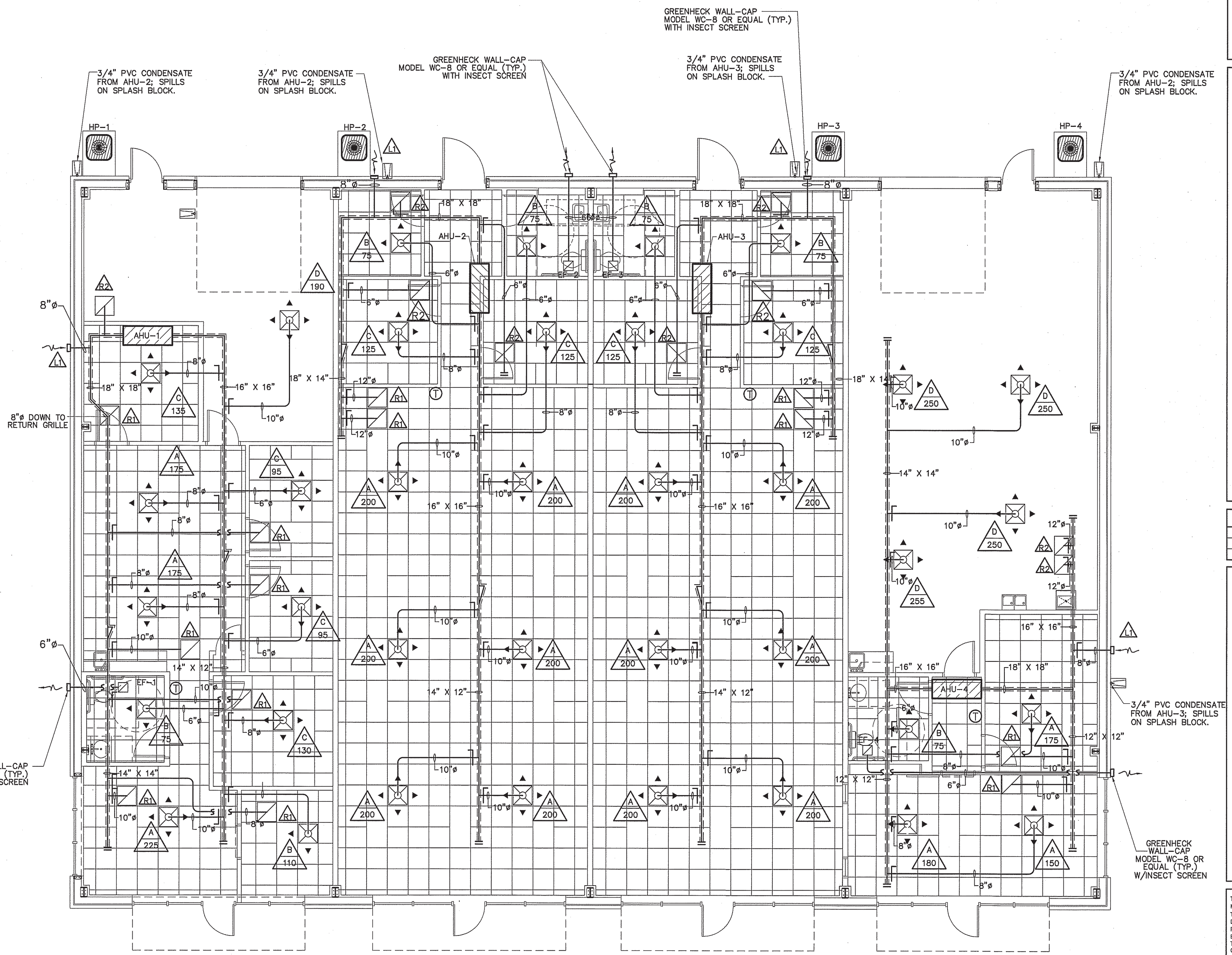
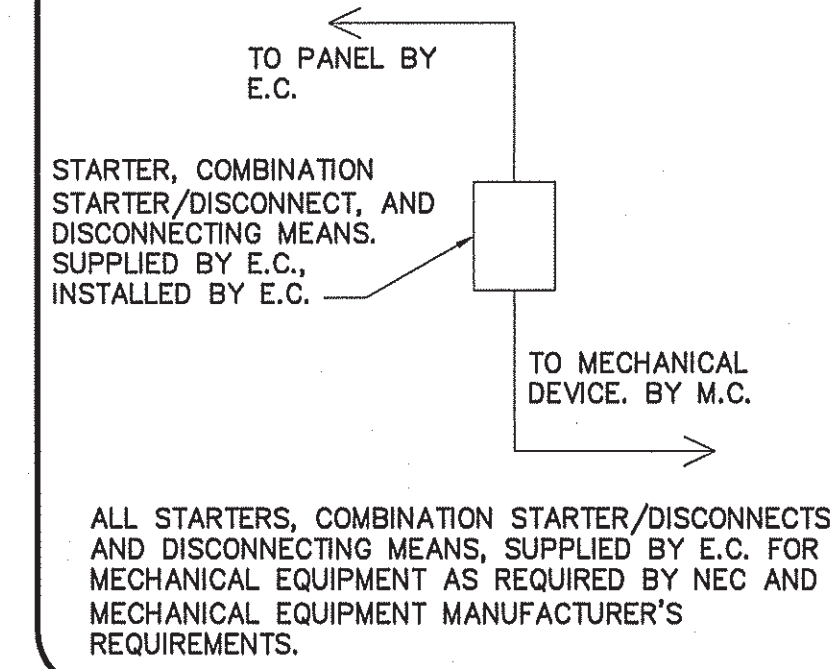


MECHANICAL SYMBOL LEGEND

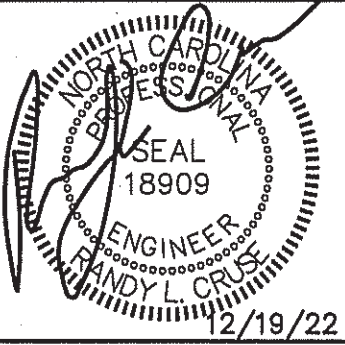
SINGLE LINE	DOUBLE LINE	DESCRIPTION
		TAKE OFF TO SUPPLY AIR REGISTER WITH EXT. INSUL. DUCTWORK
		END CAP DUCT SMOKE DETECTOR
		ACCESS DOOR VOLUME CONTROL DAMPER (TYP.)
		CEILING DIFFUSER FLEXIBLE DUCTWORK (14' MAX.)
		ONE SIDED REDUCING TRANSITION F.D.=FIRE DAMPER (1-1/2)=RATED FOR 1-1/2 HRS.
		RETURN AIR OR EXHAUST GRILLE SUPPLY AIR CEILING DIFFUSER, ARROW INDICATES DIRECTION OF BLOW & ACTIVE DIFFUSER SIDES
		(1) CUSHION HEAD @ BRANCH OR DIFFUSER RUNOUT (2) CUSHION HEAD IS EQUAL TO 1-1/2 WIDTH OF THE BRANCH DUCT OR DIFFUSER RUNOUT R.A. OR EXHAUST DUCT TURNS DOWN @ 90 DEGS.
		MANUAL VOLUME CONTROL DAMPER W/ QUADRANT LOCKING DEVICE TWO SIDED TRANSITION
		ELECT. DUCT INSERT HEATER WITH CONTROL PANEL AHU W/FLEXIBLE CONNECTION AT SUPPLY AND RETURN DUCT
		KEY NOTE MARK XXX - CFM-DIFFUSER, REGISTER OR GRILLE (SEE SCHEDULE)
		EXHAUST FAN

CONNECTION SCHEDULE



MECHANICAL HVAC PLAN
SCALE: 3/16" = 1'-0"

NOTE: MAINTAIN A MINIMUM SEPARATION OF 10' BETWEEN EXHAUST AND INTAKE GRILLES.



UP-FIT PLANS FOR:
T&L COATS
BUILDING #2
COATS, NORTH CAROLINA

REVISIONS	
NO.	

414 E. Edgerton St.
Durham, North Carolina 27604
PHONE: (919) 882-5182
FAX: (919) 882-5182

Cruse And Associates, P.A.

THESE DOCUMENTS ARE INSTRUMENTS OF SERVICE AND AS SUCH THESE DRAWINGS, DESIGNS, AND DESIGN CONCEPTS PRESENTED REMAIN THE PROPERTY OF THE ENGINEER. PUBLISH OR DUPLICATE THE DRAWINGS OR DESIGNS ONLY WITH THE WRITTEN PERMISSION OF THE ENGINEER.
© COPY RIGHT

DATE 12-19-22
DRAWN BY BAM
JOB NO. 22-60

SHEET NO.
M-1 OF 2