

MDP

ROOM MOUNTING FLUSH FED FROM UTILITY NOTE			VOLTS 208Y/120V 3P 4W BUS AMPS 800 NEUTRAL 100%			AIC 22,000 MAIN BKR MLO LUGS STANDARD					
CKT #	CKT BKR	CIRCUIT DESCRIPTION	LOAD KVA			CKT #	CKT BKR	CIRCUIT DESCRIPTION	LOAD KVA		
			A	B	C				A	B	C
1	225/3	PANEL EX.A	15.4	13.6		2	500/3	BOILER	48	48	
3						4					
5						6					
7	225/3	PANEL EX.B	20.4	20.9		8	20/1	SPACE	0	0	48
9						10	20/1	SPACE	0	0	
11						12	20/1	SPACE	0	0	
13	20/1	SPACE	0			14	20/1	SPACE	0	0	
15	20/1	SPACE		0		16	20/1	SPACE	0	0	
17	20/1	SPACE			0	18	20/1	SPACE	0	0	
19	20/1	SPACE	0			20	20/1	SPACE	0	0	
21	20/1	SPACE				22	20/1	SPACE	0	0	
23	20/1	SPACE				24	20/1	SPACE	0	0	
25	20/1	SPACE	0			26	20/1	SPACE	0	0	
27	20/1	SPACE				28	20/1	SPACE	0	0	
29	20/1	SPACE			0	30	20/1	SPACE	0	0	
31	20/1	SPACE	0			32	20/1	SPACE	0	0	
33	20/1	SPACE				34	20/1	SPACE	0	0	
35	20/1	SPACE				36	20/1	SPACE	0	0	
37	20/1	SPACE	0			38	20/1	SPACE	0	0	
39	20/1	SPACE				40	20/1	SPACE	0	0	
41	20/1	SPACE				42	20/1	SPACE	0	0	
TOTAL CONNECTED KVA BY PHASE									83.9	82.6	79.1
CONN KVA			CALC KVA			CONN KVA			CALC KVA		
LIGHTING	1.96	2.45	(125%)	KITCHEN EQUIPMENT	1.2	1.2	(100%)				
LARGEST MOTOR	11.6	2.91	(25%)	CONTINUOUS	164	205	(125%)				
MOTORS	15.6	15.6	(100%)	NONCONTINUOUS	8.64	8.64	(100%)				
RECEPTACLES	8.52	8.52	(50%>10)	HEATING	19.3	0	(0%)				
				COOLING	36.4	36.4	(100%)				
				TOTAL LOAD	281						
				BALANCED 3-PHASE LOAD	780 A						

EX.A

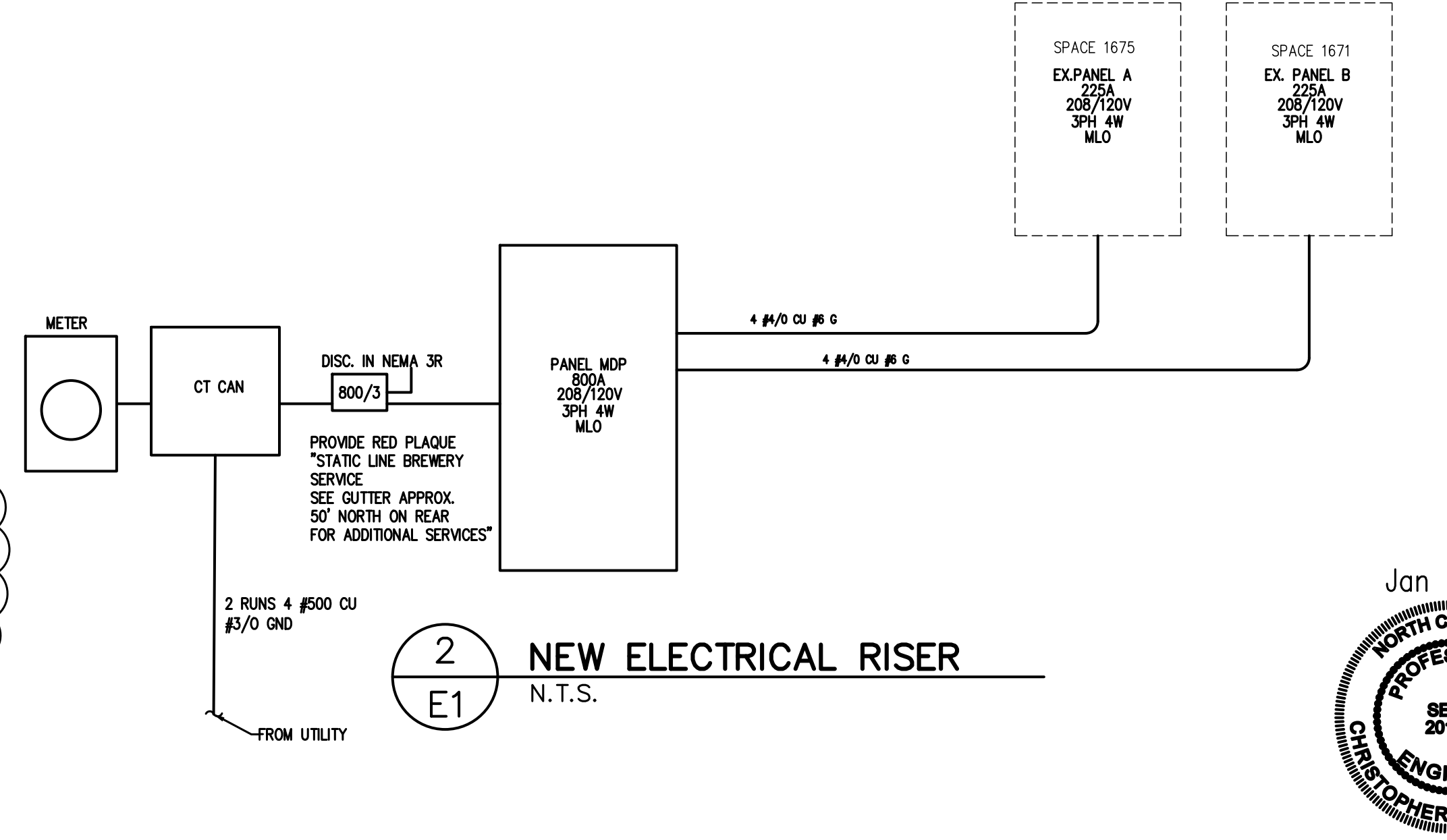
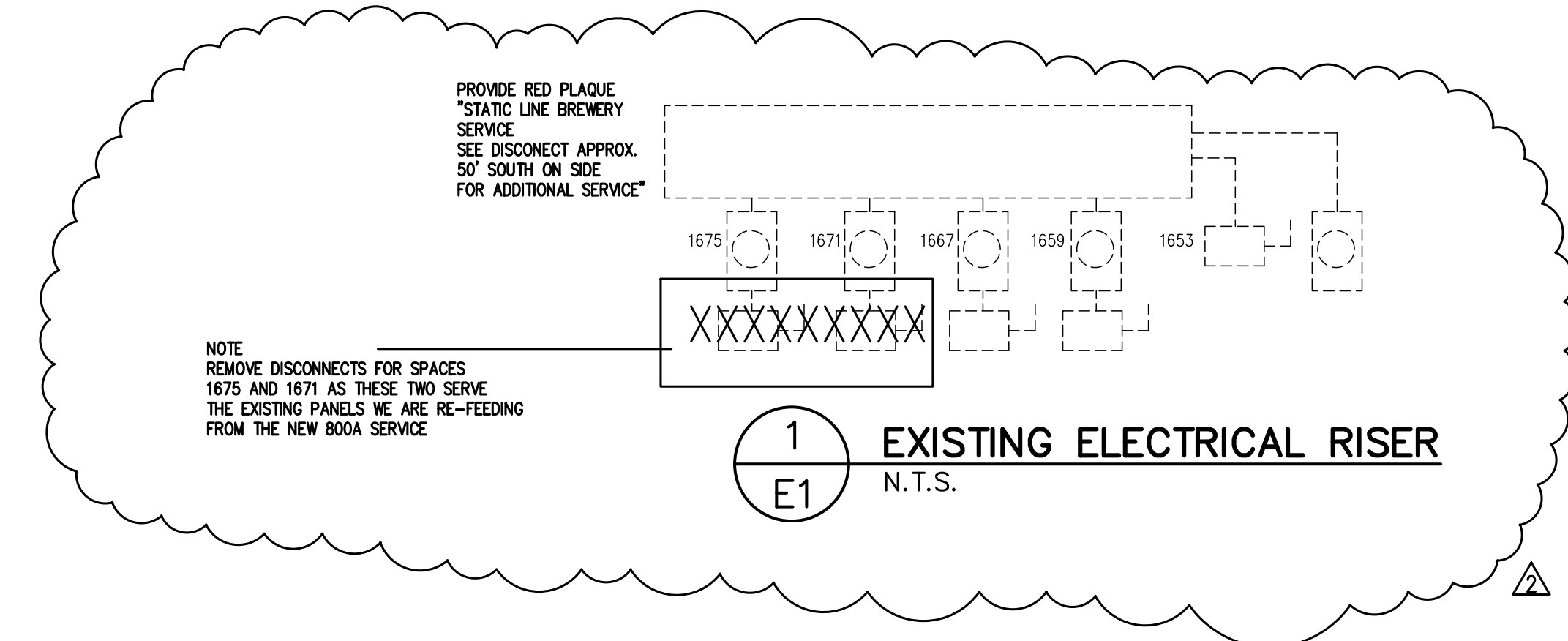
ROOM MOUNTING FLUSH FED FROM MDP NOTE			VOLTS 208Y/120V 3P 4W BUS AMPS 225 NEUTRAL 100%			AIC 22,000 MAIN BKR MLO LUGS STANDARD					
CKT #	CKT BKR	CIRCUIT DESCRIPTION	LOAD KVA			CKT #	CKT BKR	CIRCUIT DESCRIPTION	LOAD KVA		
			A	B	C				A	B	C
1	20/1	HALL RECEPTACLE	0.72			2	20/1	WH-1	2.4		
3	20/1	WP GFCI RTU RECEPTACLE	0.18			4	20/1	OFFICE RECEPTACLE	0.9		
5	20/1	BAR USB RECEPTACLE	0.72			6	20/1	MEN & WOMEN GFCI RECEPTACLE	0.36		
7	20/1	MEN, WOMEN, OFFICE & LAB EF-1, EF-2, LIGHTING	0.346			8	20/1	LEFT SIDE TAP ROOM RECEPTACLE	0.9		
9	20/1	LEFT SIDE TAP ROOM LIGHTING	0.607			10	20/1	U.C. DISHWASHER	1.2		
11	60/3	RTU-1	4.49		4.49	12	20/1	BAR GFCI RECEPTACLE	0.72		0.54
13						14	20/1	COUNTER USB RECEPTACLE	0.401		
15						16	20/1	RIGHT SIDE TAP ROOM LIGHTING			
17	70/3	RTU-2	5.86		5.86	18	20/1	ROOFTOP WP GFCI RECEPTACLE	0.18		
19						20	20/1	SPACE	0	0	0
21						22	20/1	SPACE	0	0	
23	20/1	SPACE	0			24	20/1	SPACE	0	0	
25	20/1	SPACE	0			26	20/1	SPACE	0	0	
27	20/1	SPACE	0			28	20/1	SPACE	0	0	
29	20/1	SPACE	0			30	20/1	SPACE	0	0	
31	20/1	SPACE	0			32	20/1	SPACE	0	0	
33	20/1	SPACE	0			34	20/1	SPACE	0	0	
35	20/1	SPACE	0			36	20/1	SPACE	0	0	
37	20/1	SPACE	0			38	20/1	SPACE	0	0	
39	20/1	SPACE	0			40	20/1	SPACE	0	0	
41	20/1	SPACE	0			42	20/1	SPACE	0	0	
TOTAL CONNECTED KVA BY PHASE									15.4	13.6	12.2
CONN KVA			CALC KVA			CONN KVA			CALC KVA		
LIGHTING	1.31	1.64	(125%)	KITCHEN EQUIPMENT	1.2	1.2	(100%)				
LARGEST MOTOR	6.3	1.58	(25%)	NONCONTINUOUS	2.4	2.4	(100%)				
MOTORS	0.04	0.04	(100%)	HEATING	19.3	0	(0%)				
RECEPTACLES	5.22	5.22	(50%>10)	COOLING	22.1	22.1	(100%)				
				TOTAL LOAD	34.1						
				BALANCED 3-PHASE LOAD	94.8 A						

EX.B

ROOM MOUNTING FLUSH FED FROM MDP NOTE			VOLTS 208Y/120V 3P 4W BUS AMPS 225 NEUTRAL 100%			AIC 22,000 MAIN BKR MLO LUGS STANDARD					
CKT #	CKT BKR	CIRCUIT DESCRIPTION	LOAD KVA			CKT #	CKT BKR	CIRCUIT DESCRIPTION	LOAD KVA		
			A	B	C				A	B	C
1	20/1	BLOWER	1.5	1.5		2	30/2	KEG WASHER	3.12	3.12	
3	20/1	BLOWER				4					
5	20/1	BLOWER			1.5	6	30/3	W.I.C. COND. UNIT	1.37		1.37
7	20/1	RECEPTACLE	0.18			8					
9	20/1	EF-3	0.696			10					
11	20/3	CRUSHER	0.582		0.582	12	30/3	CONTROL PANEL	2.87		2.87
13						14					
15						16					
17	15/1	BBL SYSTEM	0.644		1.4	18	20/2	AUGER	0.828		0.828
19	20/1	BREWERY LIGHTING				20					
21	20/1	SIGN/ OUTSIDE STRING LIGHTS RECEPTACLE	0.54			22	125/3	CHILLER	4.77		4.77
23	20/1	RECEPTACLE			0.36	24					
25	60/3	10 HP COMPRESSOR	3.88		3.88	26					
27						28	20/1	RECEPTACLE	0.18		0.18
29						30	20/1	RECEPTACLE	0		0
31	20/2	240V RECEPT	0.25		0.25	32	20/1	CO2 DET RECEPTACLE	0		0
33						34	20/1	SPACE	0		0
35	20/2	240V RECEPT	0.25		0.25	36	20/1	SPACE	0		0
37						38	20/1	SPACE	0		0
39	20/2	PUMP 240V RECEPT	0.25		1	40	20/1	SPACE	0		0
41						42	20/1	SPACE	0		0
TOTAL CONNECTED KVA BY PHASE									20.4	20.9	19
CONN KVA			CALC KVA			CONN KVA			CALC KVA		
LIGHTING	0.644	0.806	(125%)	RECEPTACLES	3.3	3.3	(50%>10)				
LARGEST MOTOR	11.6	2.91	(25%)	CONTINUOUS	20.3	25.3	(125%)				
MOTORS	15.6	15.6	(100%)	NONCONTINUOUS	6.24	6.24	(100%)				
				COOLING	14.3	14.3	(100%)				
				TOTAL LOAD	68.5						
				BALANCED 3-PHASE LOAD	190 A						

LUMINAIRE SCHEDULE

CALLOUT	SYMBOL	LAMP	DESCRIPTION	BALLAST	MOUNTING	MODEL	INPUT WATTS	VOLTS
A	○	(1)	LED HIGH BAY LIGHT FIXTURE	ELECTRONIC	CEILING	HUBBELL UTB2-940-MH-ED-U OR EQ.	128	120V 1P 2W
AE	○	(1)	LED HIGH BAY LIGHT FIXTURE W/ EMER. BACKUP	ELECTRONIC	CEILING	HUBBELL UTB2-940-MH-ED-U-ELL14 OR EQ.	128	120V 1P 2W
B	○	(1)	ONE LIGHT PENDANT FIXTURE-RED FINISH	ELECTRONIC	PENDANT	PROGRESS P500014-143 OR EQ.	100	120V 1P 2W
C	□	(1) (280) REFOND LEDS 80 CRI 4000K, 2835	4FT LW SPEC LINEAR WRAP 4000K UNV 0-10 DIM	ELECTRONIC	CEILING	COOPER LIGHTING SOLUTIONS - METALUX (FORMERLY EATON), 4NLW4040C	37.7	120V 1P 2W
D	▱	(1) LED	2 X 4 LED LAY-IN FIXTURE	ELECTRONIC	RECESSED	METALUX 24GR-LD5-48-F1-UNV-L840-CD1-U OR EQUAL	37.4	120V 1P 2W
EMER	⊥	(2) LED	SQUARE HEAD LED EMERGENCY LIGHT	ELECTRONIC	WALL/CEILING	METALUX AP2SQLED OR EQUAL	1.8	120V 1P 2W
EMER/EXIT	⊗	(2) LED	LED COMBINATION EXIT/EMERGENCY LIGHT	ELECTRONIC	WALL/CEILING	METALUX APCH7RSQ OR EQUAL	3.4	120V 1P 2W
EXIT	⊗	(1) 1W LED	LED EMERGENCY EXIT	ELECTRONIC	WALL/CEILING	METALUX APX7R OR EQUAL	1	120V 1P 2W
SL	—	(1) LED	LED STRING LIGHT FIXTURE	ELECTRONIC	CEILING	LITESPHERE TIVOLI - PER OWNER	50	120V 1P 2W



SPACE 1675
EX.PANEL A
225A
208Y/120V
3PH 4W
MLO

SPACE 1671
EX. PANEL B
225A
208Y/120V
3PH 4W
MLO

Jan 31, 2023

Coastal Plains Engineering, P.A.
FIRM # C-2059

296 Lochlear Rd
P.O. Box 1117
Pembroke, NC 28872
Voice: 910-521-7213
www.coastalplainseng.com

PROFESSIONAL ENGINEER
SEAL 20198
CHRISTOPHER S. LOCKER

PERMITTING STAMP:



ANDREW W. PRIVETTE, AIA
1920 FT. BRAGG ROAD
FAYETTEVILLE,
NORTH CAROLINA 28303
TELE. (910) 485-8567
andy@designedtobuild.com

STATIC LINE BREWERY
1671 BUFFALO LAKE RD
SANFORD, NC

JOB CODE: 2022-030
DRAWN BY: AJO
CHECKED BY: CSL
COPYRIGHT:
DESIGNED TO BUILD

SHEET TITLE:
12-13-22
01-31-23

E1
SHEET OF