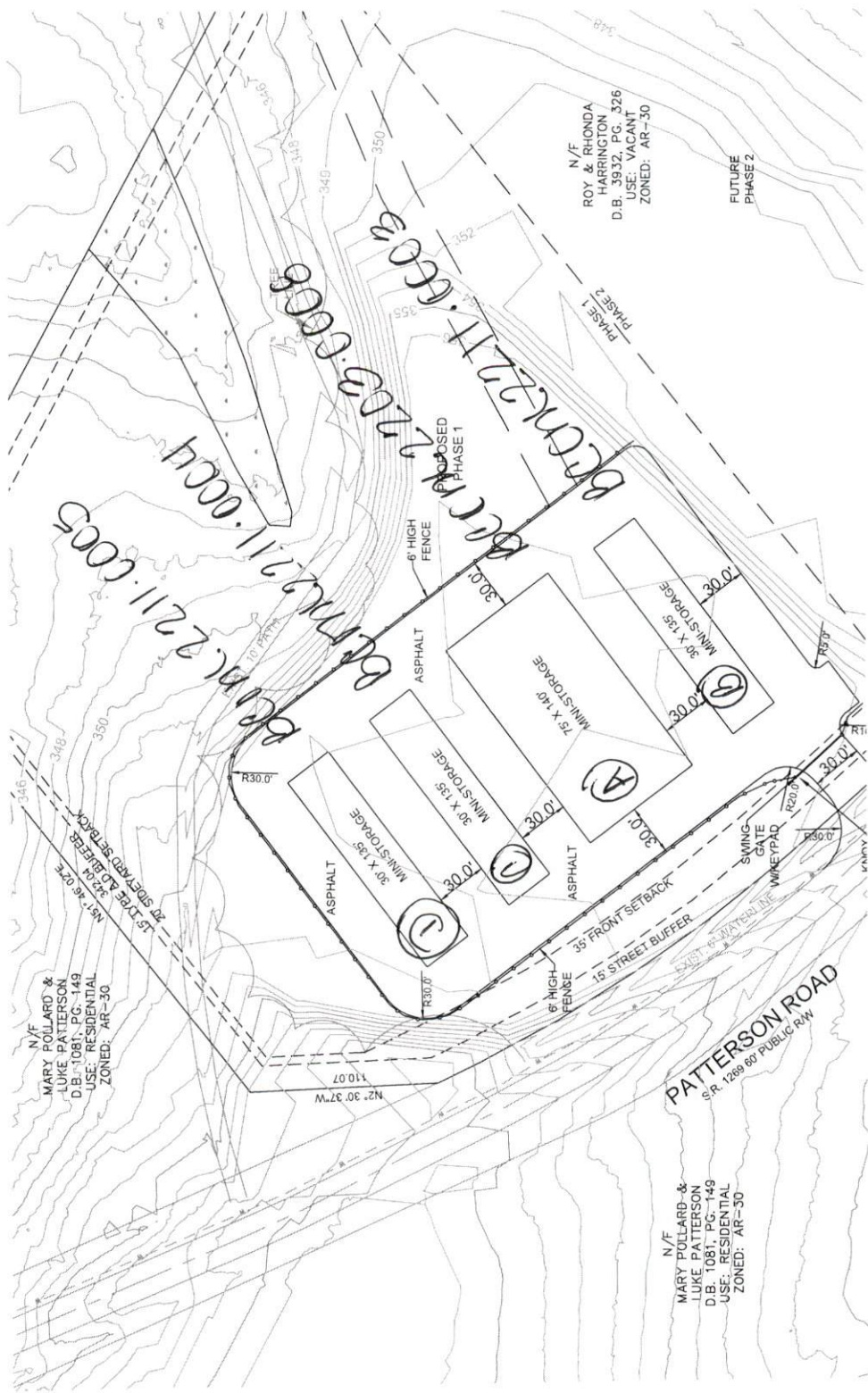


11.10.2022
Approved by
C.M.P.



N/F
MARY POLLARD &
LUKE PATTERSON
D.B. 1081, PG. 149
USE: RESIDENTIAL
ZONED: AR-30

N/F
MARY POLLARD &
LUKE PATTERSON
D.B. 1081, PG. 149
USE: RESIDENTIAL
ZONED: AR-30

N/F
ROY & RHONDA
HARRINGTON
D.B. 3932, PG. 326
USE: VACANT
ZONED: AR-30

FUTURE
PHASE 2

PATTERSON ROAD
S.R. 1289 60' PUBLIC R/W