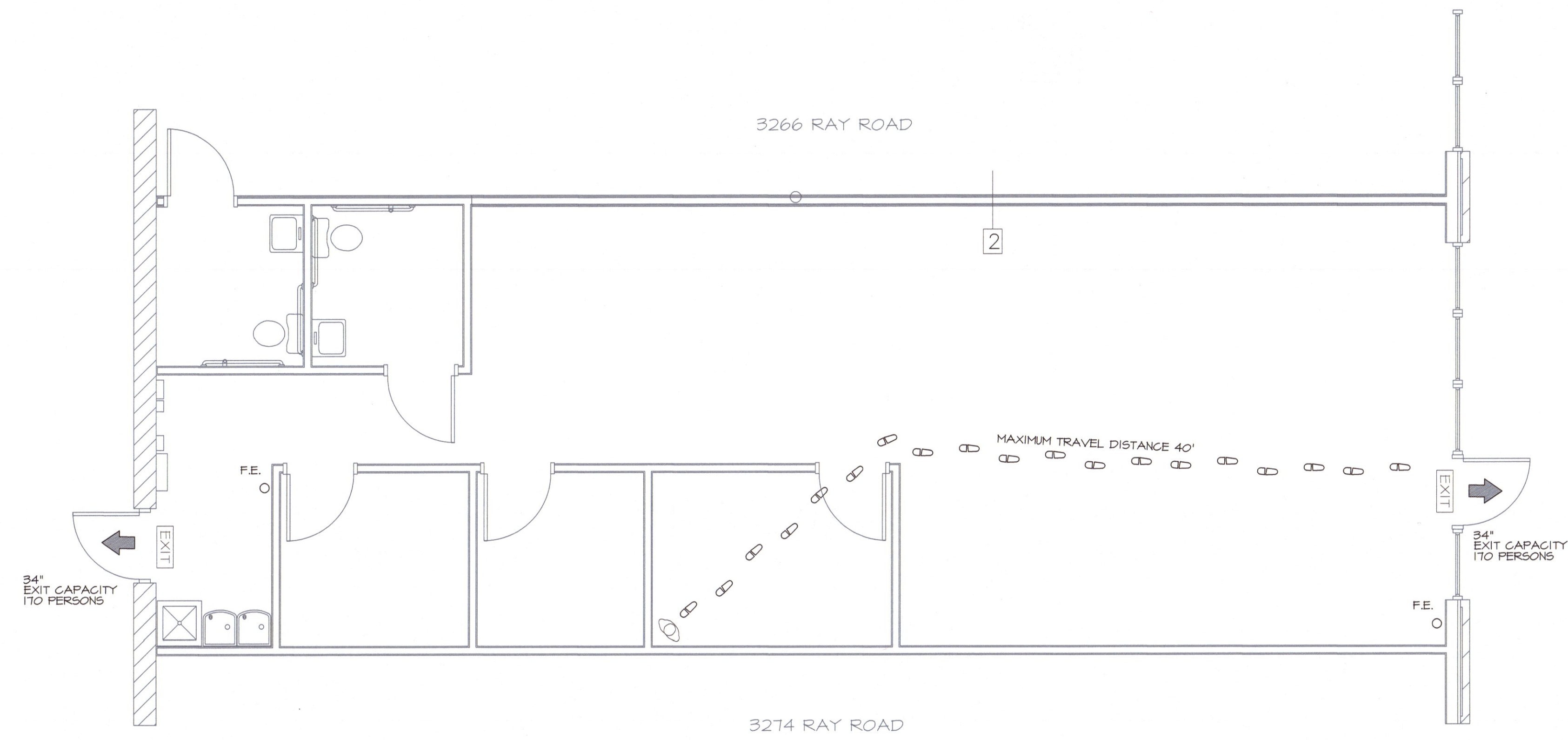


REVISIONS
10-18-22 NOTE FIRE SF, 40 MIN

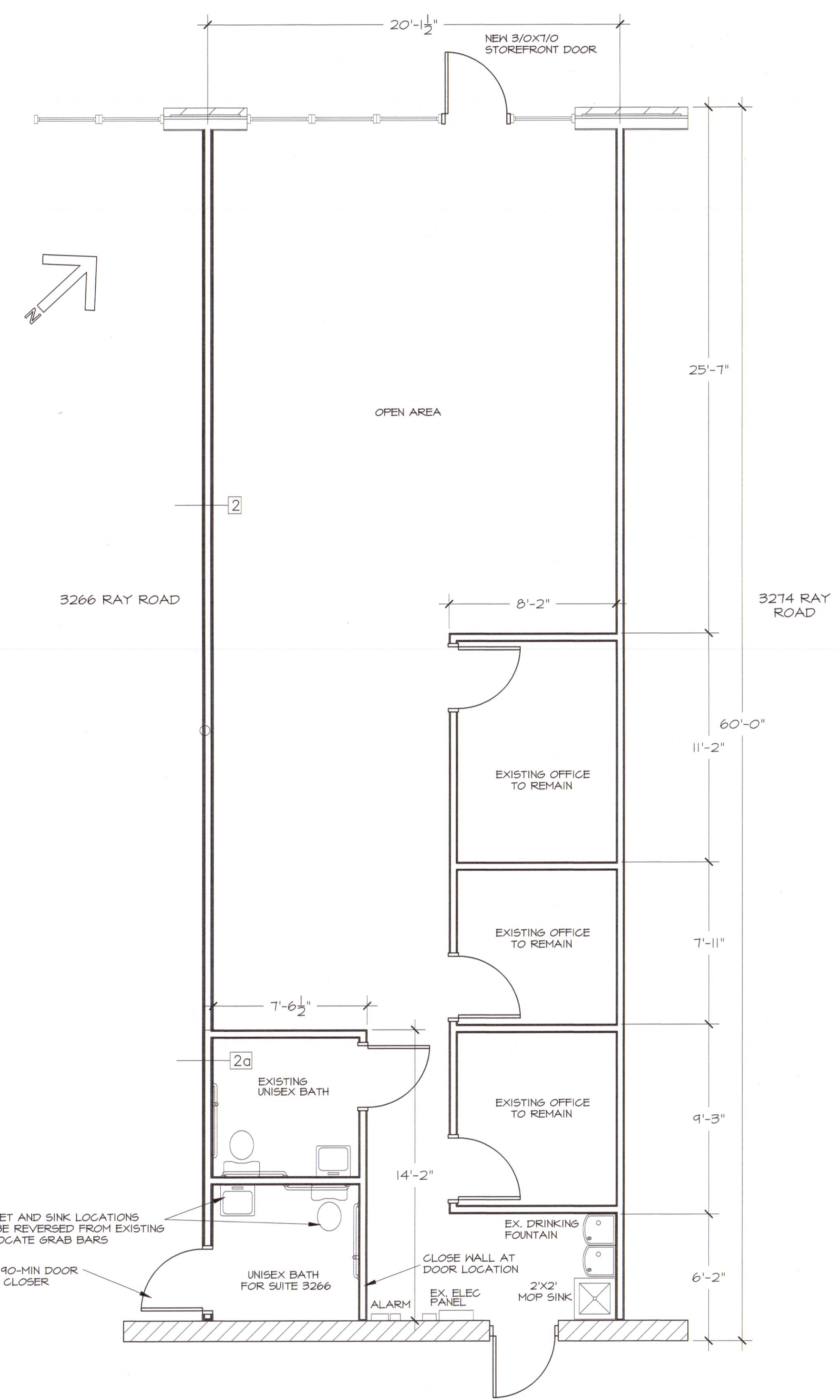
**GEORGE M. ROSE, P.E.**  
P.O. BOX 53441  
FAYETTEVILLE, NC 28305  
O 910-485-5822 M 910-977-5822 EMAIL george@gmrpe.com

INTERIOR UPFIT PLAN  
**MINDFUL THERAPY** SPRING LAKE, NC  
3268 RAY ROAD  
FLOOR PLANS AND LIFE SAFETY PLAN

DATE: SEP 2022  
DRAWN BY: GMR  
CHECKED: GMR  
SCALE: NOTED  
SHEET NO.  
**G1**



**2**  
**61**  
**LIFE SAFETY PLAN**  
1/4" = 1' - 0"

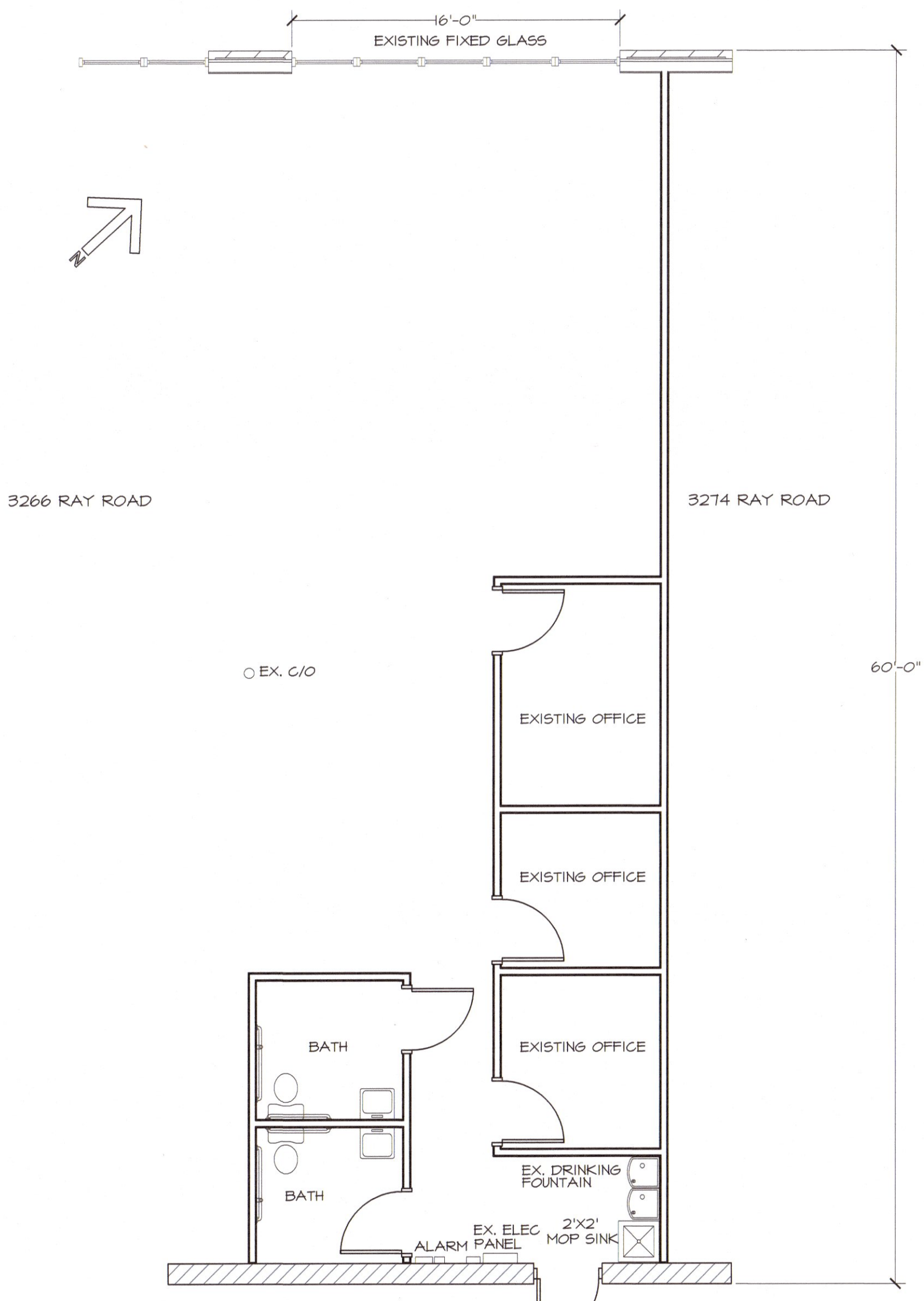


**1**  
**61**  
**FLOOR PLAN**  
1/4" = 1' - 0"



**OCCUPANCY AND LIFE SAFETY INFORMATION**  
GROSS EXTERIOR SQUARE FOOTAGE OF UPFIT = 1208 SF  
TYPE OF CONSTRUCTION: III-B  
SPACE OCCUPANCY BY GROSS EXTERIOR SF USING TABLE 1004.1.2  
BUSINESS: 1208 SF/100 SF PER PERSON = 12 PERSONS  
UNISEX TOILETS REQUIRED = 1 PER 25 UNISEX = 1 TOTAL (1 PROVIDED)  
UNISEX LAVATORIES REQUIRED = 1 PER 40 = 1 TOTAL (1 PROVIDED)  
MAXIMUM ALLOWABLE TRAVEL DISTANCE: 200 FEET (PER 1017)  
THE COMMON PATH OF TRAVEL IS LESS THAN 75 FEET. (PER 1021.8)  
THERE ARE NO DEAD END CORRIDORS OVER 20 FEET. (PER 1020.4)  
MIN. NO. OF EXITS REQ'D: ONE (PER TABLE 1006.2.1)  
NUMBER OF EXITS PROVIDED: TWO (EXISTING)  
MAXIMUM PATH OF TRAVEL = 30 FEET  
DOORS DO NOT PANIC HARDWARE. (PER 1010.1.10)  
DOORS DO NOT HAVE DELAYED EGRESS LOCKS (PER 1010.1.9.6.2)  
DOORS DO NOT HAVE ELECTROMAGNETIC EGRESS LOCKS (PER 1010.1.9.4)  
DOORS DO NOT HAVE HOLD OPEN DEVICES.  
THERE ARE NO EMERGENCY ESCAPE WINDOWS (PER 1030)  
THIS SPACE IS PROTECTED BY AN EXISTING FIRE SPRINKLER SYSTEM.  
EGRESS ILLUMINATION PROVIDED AT EACH EXIT (PER 1008)  
NO. OF FIRE EXTINGUISHERS PROVIDED: 2 TOTAL  
PROVIDE FIRE EXTINGUISHERS UNDER THE FOLLOWING CONDITIONS:  
1. WITHIN 30' OF COMMERCIAL COOKING EQUIPMENT  
2. IN AREAS WHERE FLAMMABLE OR COMBUSTIBLE LIQUIDS ARE STORED, USED OR DISPENSED.  
3. WHERE REQUIRED BY SECTIONS IN TABLE 906.1, N.C. BUILDING CODE  
4. SPECIAL-HAZARD AREAS WHERE REQUIRED BY FIRE CODE OFFICIAL.

- LEGEND**
- NEW INTERIOR WALL TO ROOF DECK  
20 GA 3-5/8" METAL STUDS AT 16" O.C.  
TWO LAYER 5/8" SHEETROCK INTERIOR SIDE  
R-15 BATT INSULATION  
2-HOUR FIRE RATINGS PER UL 1414
  - EXISTING WALL TO APPROX. 10' HEIGHT  
EXTEND TO ROOF DECK AND ADD SHEETROCK  
TO CREATE 2-HOUR FIRE RATINGS PER UL 1414
  - R-15 BATT INSULATION  
2-HOUR FIRE RATINGS PER UL 1414
  - EXIT ROUTE
  - 34' EXIT WIDTH
  - F.E. ○ ABC FIRE EXTINGUISHER SUGGESTED LOCATION



**3**  
**61**  
**EXISTING FLOOR PLAN**  
3/16" = 1' - 0"