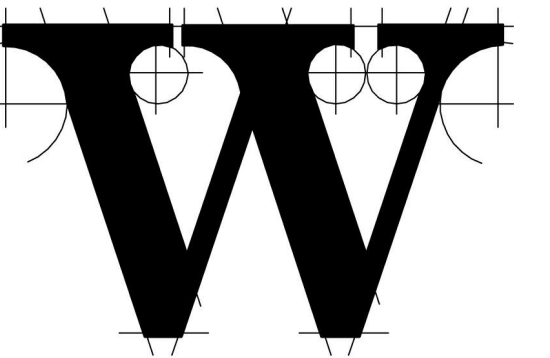




03/17/2023

ARCHITECT



THE WILSON GROUP

PO BOX 5510
CHARLOTTE, NC 28299
(704) 331-9747

PROJECT MANAGER CIVIL ENGINEER

TALBERT & BRIGHT

4810 SHELLEY DRIVE
WILMINGTON, NC 28405
(910) 765-5550
FIRM NO.: C-0713

STRUCTURAL ENGINEER

STEWART

101 N. TRYON ST., SUITE 1400
CHARLOTTE, NC 28202
(704) 334-7925
FIRM NO.: C-1051

MECHANICAL, ELECTRICAL, PLUMBING &
FIRE PROTECTION ENGINEER

SABER ENGINEERING

2923 S. TRYON ST., SUITE 280
CHARLOTTE, NC 28203
(704) 373-0068
FIRM NO.: C-2150

IT / SECURITY

VERTEX TECHNOLOGY
CONSULTANTS

4700 LEBANON RD., SUITE A-1
CHARLOTTE, NC 28227
(800) 272-8500

REVISIONS

1 03/17/2023 BD-02

DATE SEPTEMBER 9, 2022

PROJECT NUMBER 9189-000

SHEET TITLE

WOOD FLOOR
SECTIONS

SHEET NUMBER

S-612

