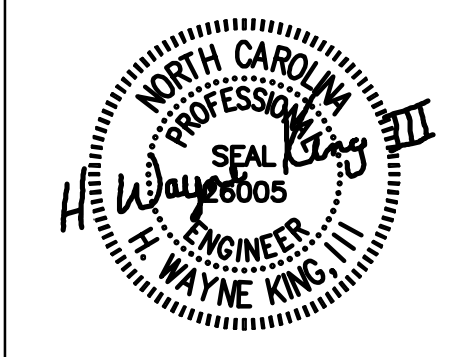




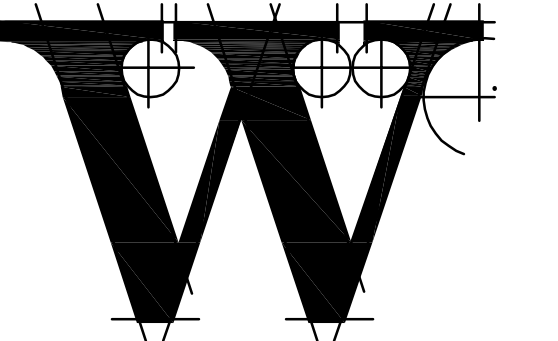
2923 South Tryon Street Suite 280
Charlotte, North Carolina 28203
tel 704.373.0068

MECHANICAL ELECTRICAL PLUMBING



March 21, 2023
FIRM NUMBER = C-2130

ARCHITECT



THE WILSON GROUP

P O BOX 5510
CHARLOTTE, NC 28299
(704) 331-9747

PROJECT MANAGER | CIVIL ENGINEER

TALBERT & BRIGHT

4810 SHELLEY DRIVE
WILMINGTON, NC 28405
(910) 763-6360
FIRM NO.: C-0713

STRUCTURAL ENGINEER

STEWART

101 N. TRYON ST., SUITE 1400
CHARLOTTE, NC 28202
(704) 909-3523
FIRM NO.: C-1051

MECHANICAL, ELECTRICAL, PLUMBING &
FIRE PROTECTION ENGINEER

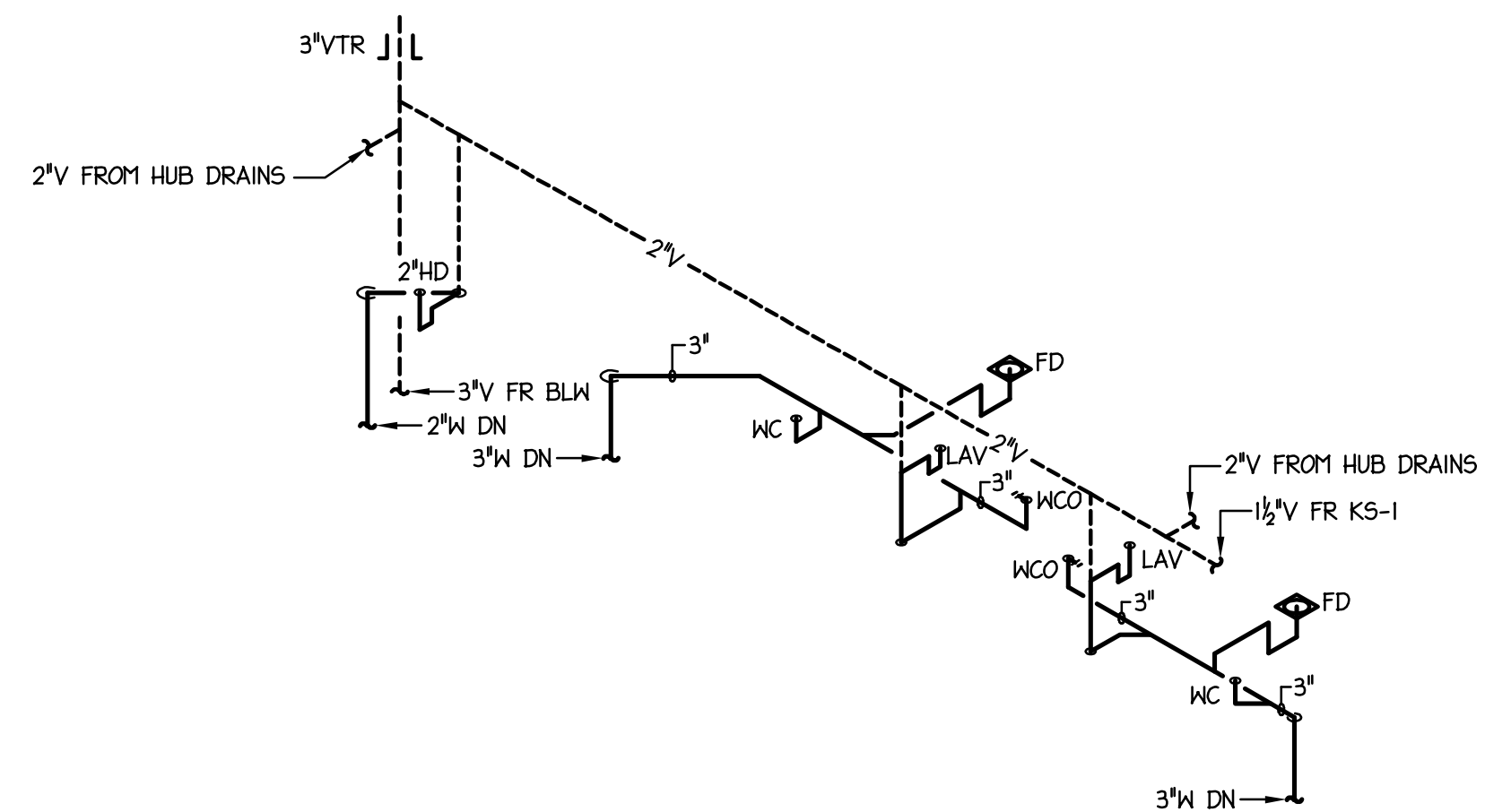
SABER ENGINEERING

2923 S. TRYON ST., SUITE 280
CHARLOTTE, NC 28203
(704) 373-0068
FIRM NO.: C-2130

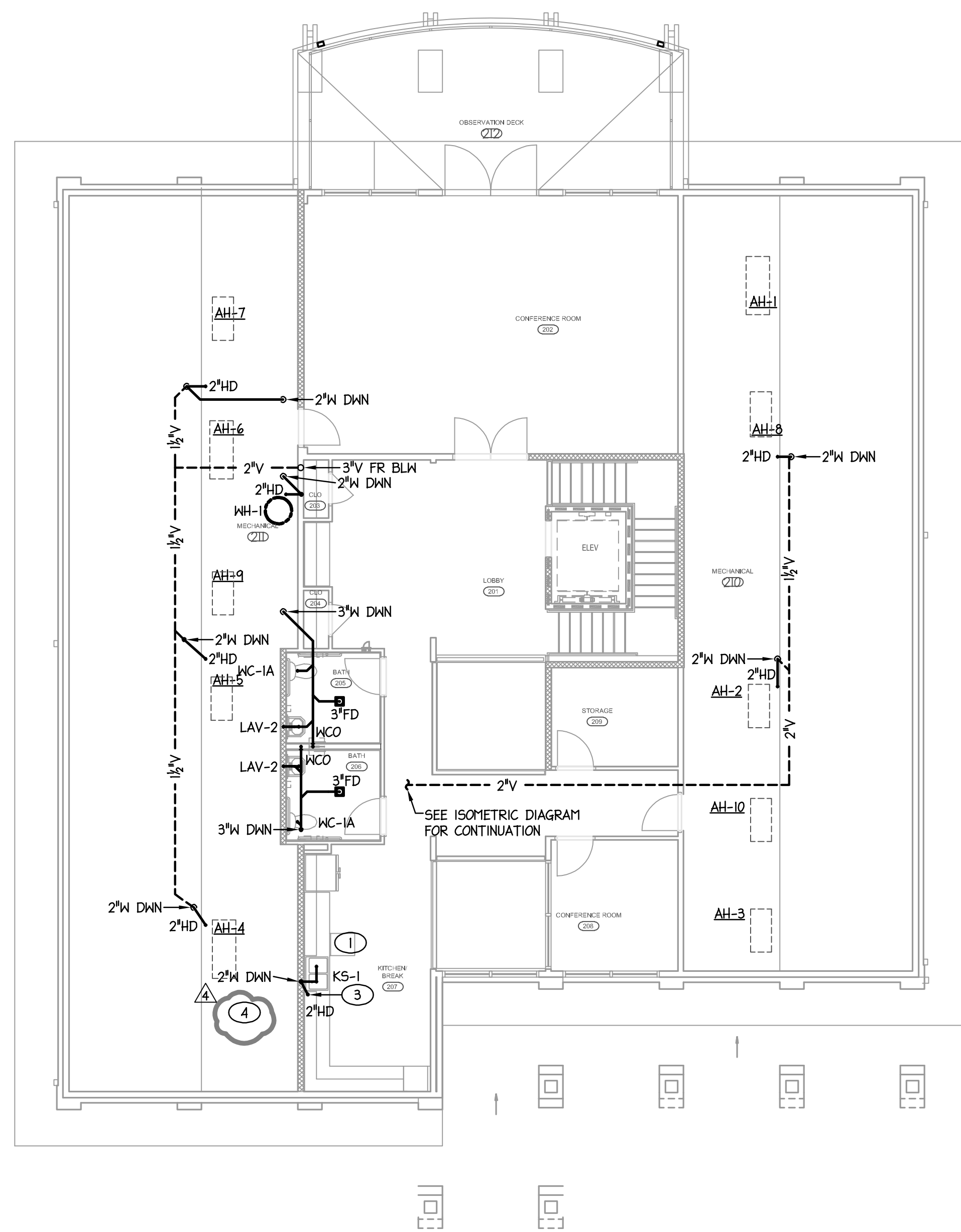
IT / SECURITY

**VERTEX TECHNOLOGY
CONSULTANTS**

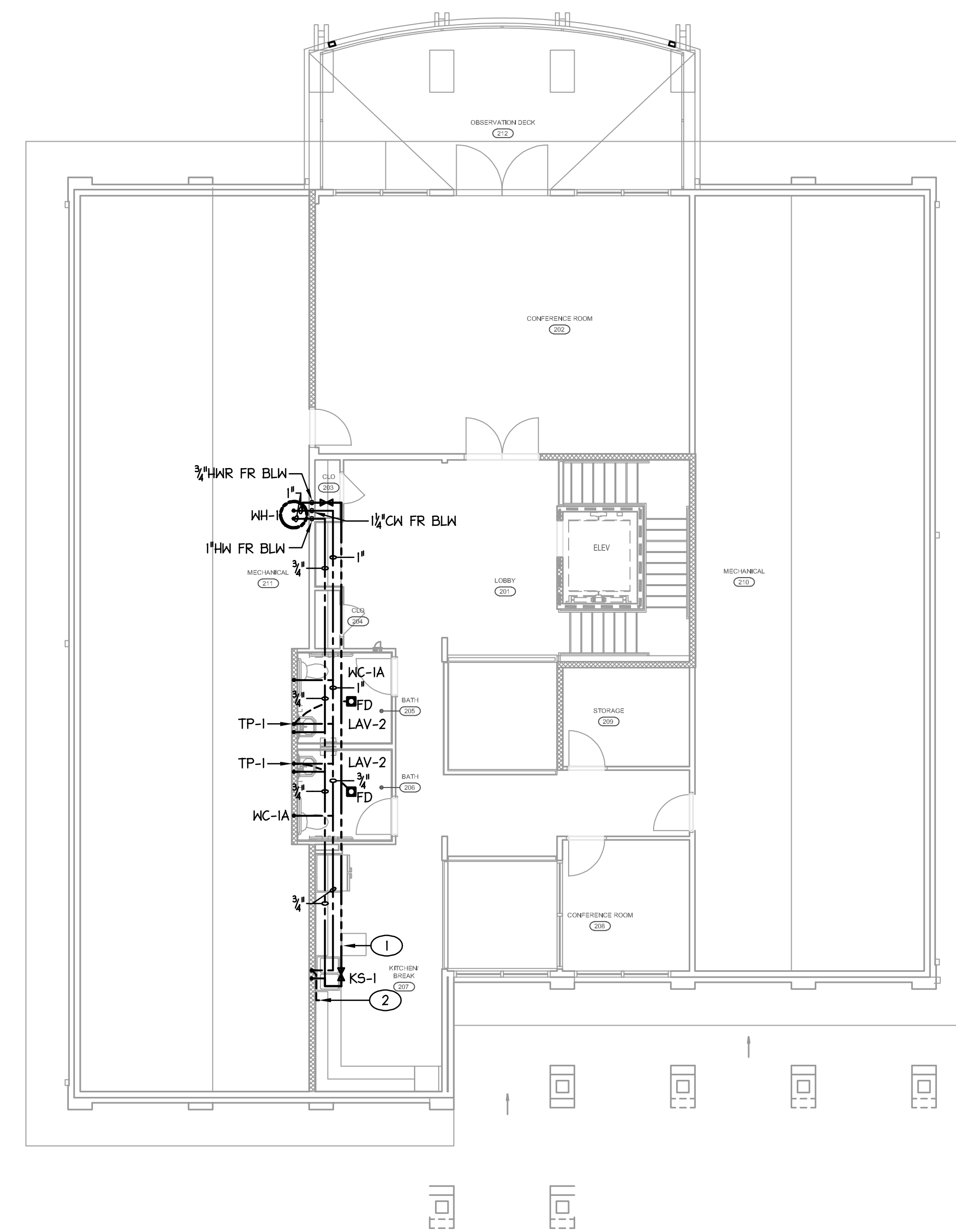
4700 LEBANON RD., SUITE A-1
CHARLOTTE, NC 28227
(800) 272-9590



3 SECOND FLOOR WASTE/VENT ISOMETRIC
NO SCALE



1 SECOND FLOOR SANITARY PLAN
1/8" = 1'-0"



2 SECOND FLOOR SUPPLY PLAN
1/8" = 1'-0"

TAGGED NOTES - THIS SHEET

- 1 PROVIDE ALL REQUIRED PLUMBING CONNECTIONS FOR DISHWASHER AND DISPOSAL PER MFR. RECOMMENDATIONS.
- 2 PROVIDE 1/2" SPLIT TO UNDERCOUNTER ICE-MAKER FROM KITCHEN SINK. PROVIDE WITH SHUT-OFF VALVE AND SECONDARY BACKFLOW PREVENTOR WATTS MODEL SD-3.
- 3 2" HUB DRAIN INSTALLED BENEATH CABINETS FOR ICE MAKER DRAIN. COORDINATE EXACT LOCATION WITH MANUFACTURER INSTALLATION INSTRUCTIONS.
- 4 OFFSET WASTE LINE IN THE CEILING BELOW TO FIRST FLOOR WALL. SEE P-201 FOR CONTINUATION.

NOTE:
ALL HOT WATER REGRIP PIPING TO BE 3/4"
THROUGHOUT UNLESS OTHERWISE NOTED.

NOTE:
FREEZE PROTECTION TO BE PROVIDED FOR ALL WATER/WASTE
PIPING INSTALLED WITHIN UNCONDITIONED SPACES.

NOTE:
ALL WASTE PENETRATIONS AND PIPING WITHIN MECHANICAL
ROOMS TO BE INSTALLED WITH WATER TIGHT SEALING AS
REQUIRED BY CODE.

REVISIONS

BD-04 05/02/2023

DATE SEPTEMBER 9, 2022

PROJECT NUMBER 9189-000

SHEET TITLE
**PLUMBING
SECOND FLOOR
PLANS**

SHEET NUMBER

P-202

