

P O BOX 5510
 CHARLOTTE, NC 28299
 (704) 331-9747

PROJECT MANAGER | CIVIL ENGINEER
TALBERT & BRIGHT

4810 SHELLEY DRIVE
 WILMINGTON, NC 28405
 (910) 763-5350
 FIRM NO.: C-0713

STRUCTURAL ENGINEER
STEWART

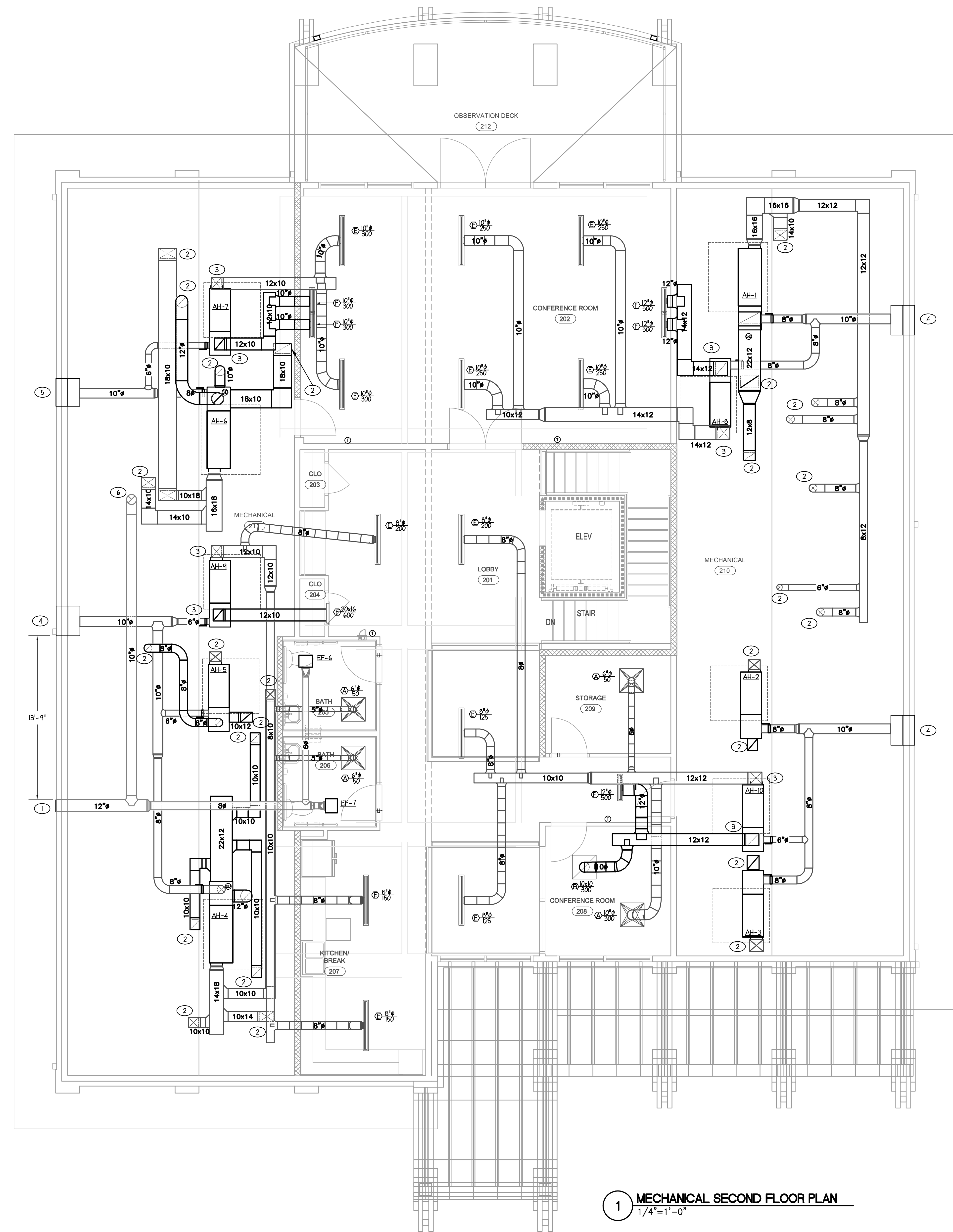
101 N TRYON ST., SUITE 1400
 CHARLOTTE, NC 28202
 (704) 909-3523
 FIRM NO.: C-1051

MECHANICAL, ELECTRICAL, PLUMBING &
 FIRE PROTECTION ENGINEER
SABER ENGINEERING

2923 S. TRYON ST., SUITE 280
 CHARLOTTE, NC 28203
 (704) 373-0068
 FIRM NO.: C-2130

IT / SECURITY
VERTEX TECHNOLOGY CONSULTANTS

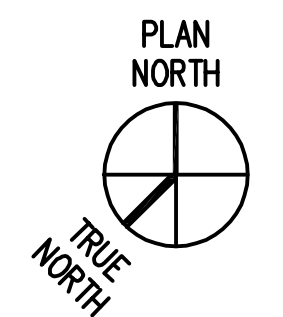
4700 LEBANON RD., SUITE A-1
 CHARLOTTE, NC 28227
 (980) 272-9500



- TAGGED NOTES - THIS SHEET**
- 1 SLOPE EXHAUST DUCT TO EXTERIOR 24x18 WALL LOUVER EQUAL TO RUSKIN ELF6375X, 0.95 SOFT FREE AREA. PROVIDE WITH BIRDSCREEN. PROVIDE WITH FIELD SUPPLIED INSULATED 24x18x12 PLENUM. MAINTAIN 10'-0" CLEARANCE TO ALL FRESH AIR INTAKES.
 - 2 SUPPLY/RETURN AIR DUCT DOWN TO FIRST FLOOR CEILING SPACE. SEE 1/12.1 FOR CONTINUATION.
 - 3 SUPPLY AND RETURN AIR DUCT UP TO CEILING SPACE.
 - 4 30x18 OUTSIDE AIR INTAKE LOUVER EQUAL TO RUSKIN ELM90, 1.6 SOFT FREE AREA. PROVIDE WITH BACKDRAFT DAMPER AND BIRDSCREEN. PROVIDE WITH FIELD SUPPLIED INSULATED 30x18x12 PLENUM.
 - 5 28x18 OUTSIDE AIR INTAKE LOUVER EQUAL TO RUSKIN ELM90, 1.2 SOFT FREE AREA. PROVIDE WITH BACKDRAFT DAMPER AND BIRDSCREEN. PROVIDE WITH FIELD SUPPLIED INSULATED 28x18x12 PLENUM.
 - 6 10" EXHAUST DUCT FROM FLOOR BELOW. SEE 1/12.1 FOR CONTINUATION.

NOTE:
 RENOVATED SUPPLY AND RETURN DUCTWORK ROUTING FOR AH-1, AH-2, AH-3, AH-4, AH-5, AND AH-6 TO FIT BETWEEN NEW TRUSS DESIGN.

1 MECHANICAL SECOND FLOOR PLAN
 1/4"=1'-0"



REVISIONS

1	COORD. CHANGES	03/21/2023
---	----------------	------------

DATE SEPTEMBER 9, 2022
 PROJECT NUMBER 9189-001

SHEET TITLE
MECHANICAL SECOND LEVEL FLOOR PLAN

SHEET NUMBER
M-202