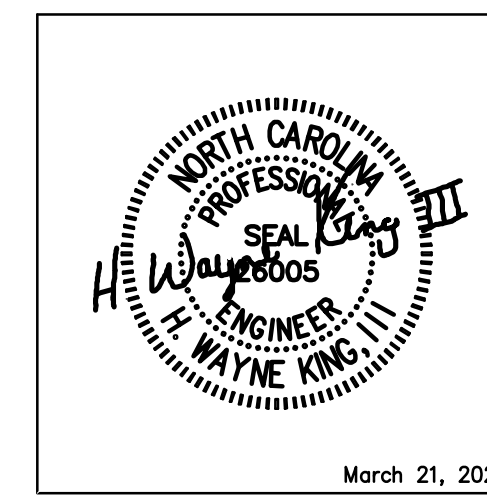




2923 South Tryon Street Suite 280  
Charlotte, North Carolina 28203  
tel 704.373.0068

MECHANICAL ELECTRICAL PLUMBING



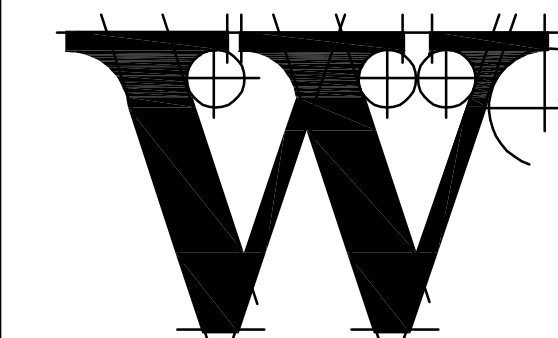
March 21, 2023  
FIRM NUMBER = C-2130

HARNETT REGIONAL JETPORT

**NEW  
TERMINAL  
BUILDING**

WBS NO. 36237.25.15.1

ARCHITECT



**THE WILSON GROUP**

P O BOX 5510  
CHARLOTTE, NC 28299  
(704) 331-9747

PROJECT MANAGER | CIVIL ENGINEER

**TALBERT & BRIGHT**

4810 SHELLEY DRIVE  
WILMINGTON, NC 28405  
(910) 763-6350  
FIRM NO.: C-0713

STRUCTURAL ENGINEER

**STEWART**

101 N. TRYON ST., SUITE 1400  
CHARLOTTE, NC 28202  
(704) 909-3523  
FIRM NO.: C-1051

MECHANICAL, ELECTRICAL, PLUMBING &  
FIRE PROTECTION ENGINEER

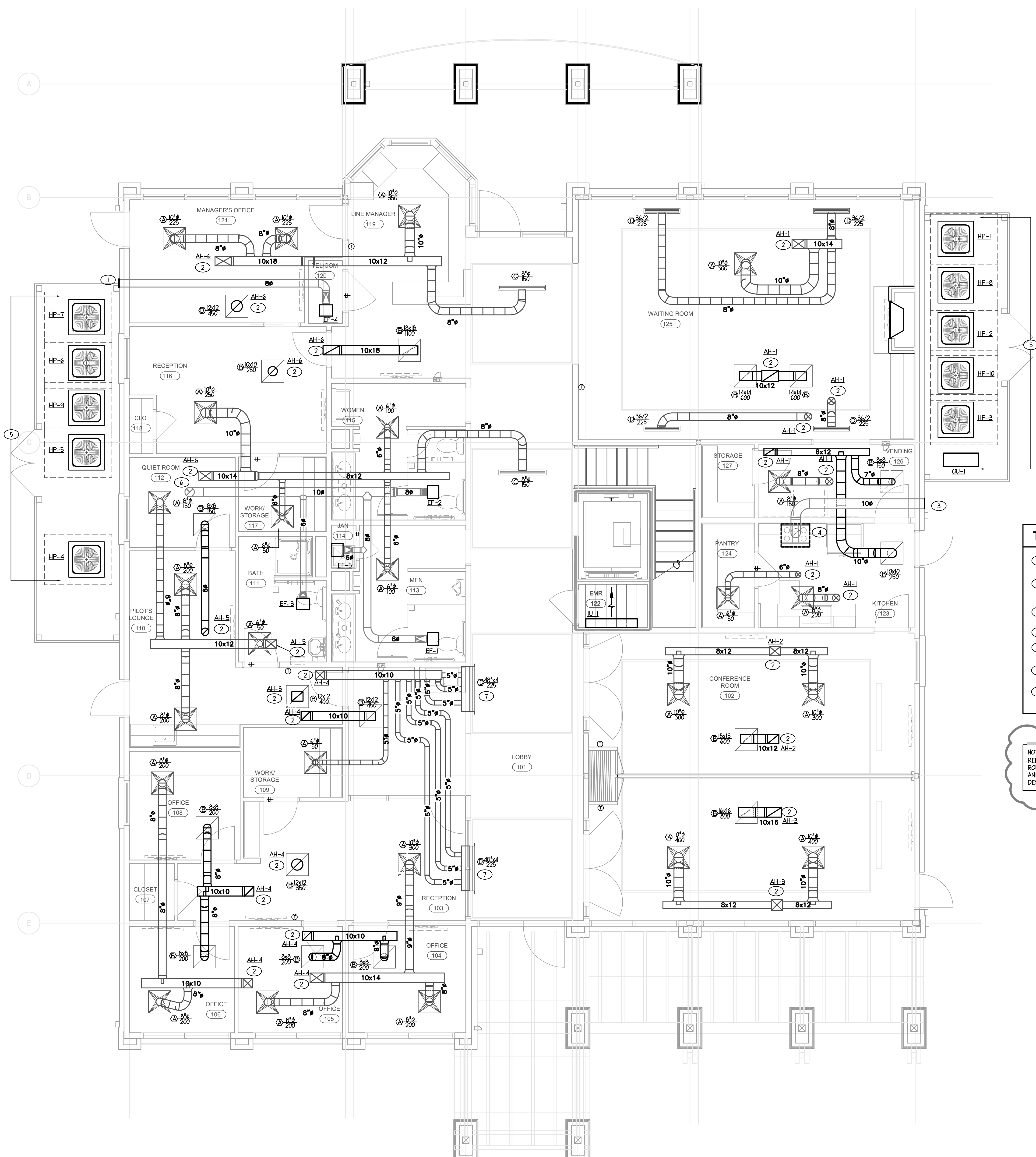
**SABER ENGINEERING**

2923 S. TRYON ST., SUITE 280  
CHARLOTTE, NC 28203  
(704) 373-0068  
FIRM NO.: C-2130

IT / SECURITY

**VERTEX TECHNOLOGY  
CONSULTANTS**

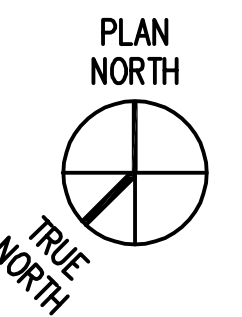
4700 LEBANON RD., SUITE A-1  
CHARLOTTE, NC 28227  
(980) 272-6900



- TAGGED NOTES - THIS SHEET**
- EXHAUST DUCT TO EXTERIOR WALL LOUVER. WALL LOUVER BY FAN MANUFACTURER.
  - SUPPLY/RETURN AIR DUCT UP TO FLOOR ABOVE. FIELD COORDINATE LOCATION AND DUCT ROUTING WITH STRUCTURE. SEE 1/12.2 FOR CONTINUATION.
  - KITCHEN EXHAUST DUCT TO EXTERIOR WALL LOUVER.
  - KITCHEN HOOD BY OTHERS.
  - HP ON CONCRETE PAD. FIELD COORDINATE EXACT LOCATION.
  - 10" EXHAUST DUCT UP TO ATTIC SPACE. SEE 1/2.2 FOR CONTINUATION.
  - PROVIDE DIFFUSER WITH THREE SEPARATE FIELD SUPPLIED SUPPLY AIR PLENUMS. BLANK-OFF UNUSED SECTIONS AT TRUSSES.

NOTE:  
REWORKED SUPPLY AND RETURN DUCTWORK ROUTING FOR AH-1, AH-2, AH-3, AH-4, AH-5, AND AH-6 TO FIT BETWEEN NEW TRUSS DESIGN.

**1 MECHANICAL FIRST FLOOR PLAN**  
1/4"=1'-0"



WL-1703-M201.dwg, Plotted By: Travis  
Mar 31, 2023 - 6:46am

REVISIONS

1	COORD. CHANGES	03/21/2023
---	----------------	------------

DATE SEPTEMBER 9, 2022  
PROJECT NUMBER 9189-000

SHEET TITLE  
**MECHANICAL  
FIRST LEVEL  
FLOOR PLAN**

SHEET NUMBER  
**M-201**