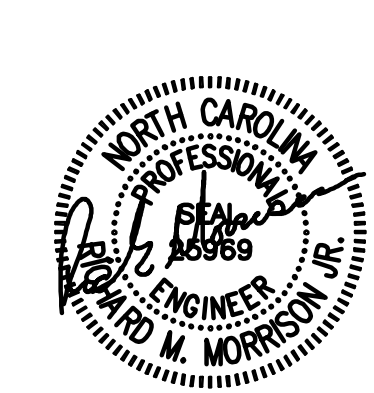


2923 South Tryon Street Suite 280  
Charlotte, North Carolina 28203  
tel 704.373.0068  
MECHANICAL ELECTRICAL PLUMBING  
Nov 04, 2022  
FIRM NUMBER = C-2130



HARNETT REGIONAL JETPORT  
**NEW TERMINAL BUILDING**  
WBS NO. 36237.25.15.1

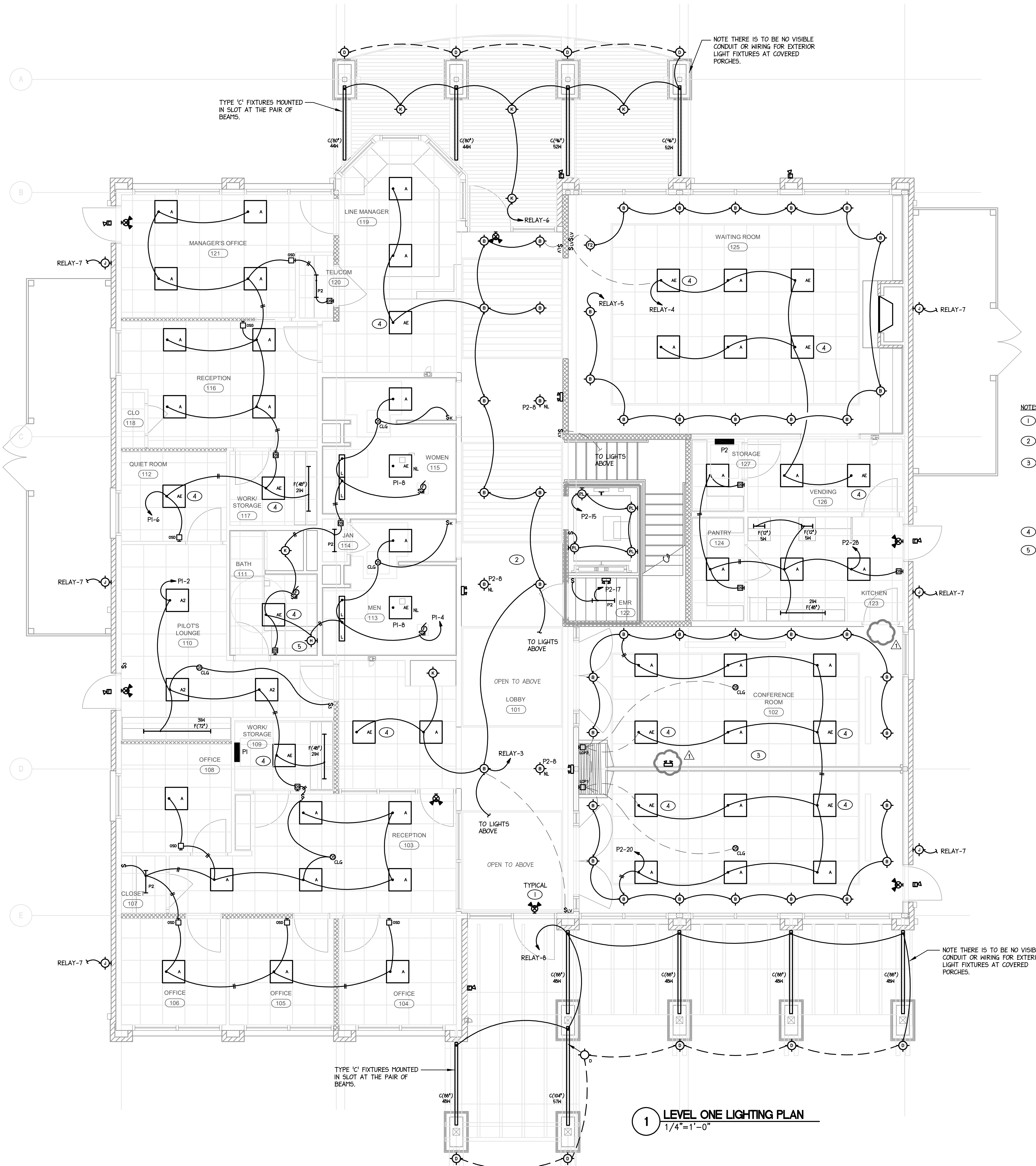
ARCHITECT  
**THE WILSON GROUP**  
P O BOX 5510  
CHARLOTTE, NC 28299  
(704) 331-9747

PROJECT MANAGER / CIVIL ENGINEER  
**TALBERT & BRIGHT**  
4810 SHELLEY DRIVE  
WILMINGTON, NC 28405  
(910) 763-6360  
FIRM NO.: C-0713

STRUCTURAL ENGINEER  
**STEWART**  
101 N. TRYON ST., SUITE 1400  
CHARLOTTE, NC 28202  
(704) 909-3523  
FIRM NO.: C-1051

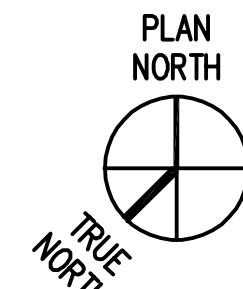
MECHANICAL, ELECTRICAL, PLUMBING & FIRE PROTECTION ENGINEER  
**SABER ENGINEERING**  
2923 S. TRYON ST., SUITE 280  
CHARLOTTE, NC 28203  
(704) 373-0068  
FIRM NO.: C-2130

IT / SECURITY  
**VERTEX TECHNOLOGY CONSULTANTS**  
4700 LEBANON RD., SUITE A-1  
CHARLOTTE, NC 28227  
(980) 272-9500



- NOTES:
- CONNECT ALL EXIT LIGHTS TO NEAREST UNSWITCHED LEG OF LOCAL EMERGENCY LIGHTING CIRCUIT, TYPICAL FOR EACH.
  - SEE ARCHITECTURAL REFLECTED CEILING PLANS AND ELEVATIONS FOR EXACT LIGHT FIXTURE MOUNTING LOCATIONS.
  - E.C. TO PROVIDE A COMPLETE AND OPERATIONAL DIMMING SYSTEM AS INDICATED ON THE PLANS FOR THE MEETING ROOMS AS MANUFACTURED BY LUTRON. SEE SHEET E-102 FOR LUTRON LIGHTING LIGHTING CONTROL REQUIREMENTS FOR THE WAITING ROOMS. THE CONFERENCE ROOMS ARE TO HAVE SEPARATE DIMMING AND OCCUPANCY SENSING AND DIMMING CONTROLS WHEN THE DIVIDER WALL IS CLOSED AND HAVE COMBINED OCCUPANCY SENSING AND DIMMING CONTROLS WHEN THE DIVIDER WALL IS OPEN. COORDINATE EXACT LIGHTING CONTROL AND LIGHT FIXTURE WIRING REQUIREMENTS AND EQUIPMENT REQUIRED WITH MANUFACTURER.
  - PROVIDE UNSWITCHED HOT LEG FOR BATTERY.
  - PROVIDE 120V CONNECTION FOR LIGHTED MIRROR. FIELD COORDINATE EXACT ROUGH-IN LOCATION WITH G.C.

**1 LEVEL ONE LIGHTING PLAN**  
1/4"=1'-0"



ML-1703-E201L.dwg, Plotted By: Ryan  
Nov 04, 2022 - 7:35am

REVISIONS

NO.	DATE	DESCRIPTION
1	11/04/2022	CODE COMMENTS

DATE SEPTEMBER 9, 2022  
PROJECT NUMBER 9189-000

SHEET TITLE  
**ELECTRICAL FIRST LEVEL LIGHTING PLAN**

SHEET NUMBER  
**E-201L**