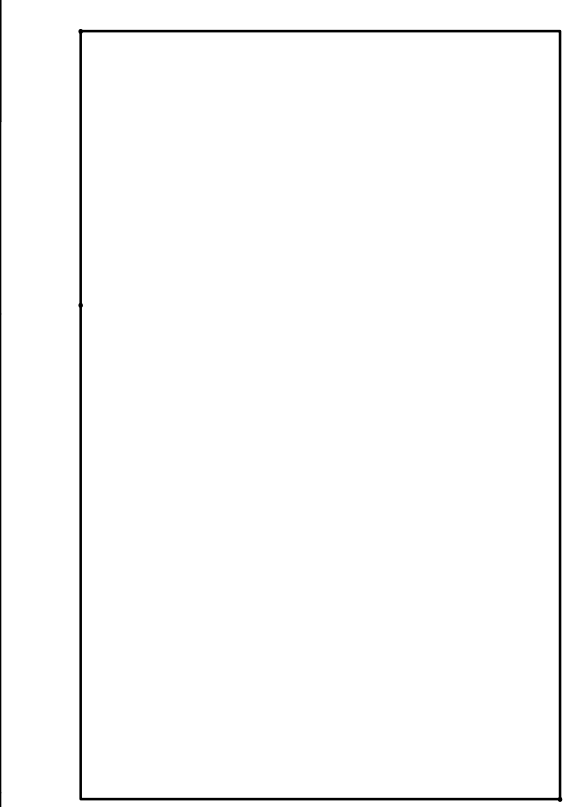


2923 South Tryon Street Suite 280
 Charlotte, North Carolina 28203
 tel 704.373.0068
 MECHANICAL ELECTRICAL PLUMBING

March 21, 2023
 FIRM NUMBER = C-2130

NOTE: THERE IS TO BE NO VISIBLE CONDUIT OR WIRING FOR EXTERIOR LIGHT FIXTURES AT COVERED PORCHES.

HARNETT REGIONAL JETPORT
NEW TERMINAL BUILDING
 WBS NO. 36237.25.15.1



ARCHITECT
THE WILSON GROUP
 P O BOX 5510
 CHARLOTTE, NC 28299
 (704) 331-9747

PROJECT MANAGER / CIVIL ENGINEER
TALBERT & BRIGHT
 4810 SHELLEY DRIVE
 WILMINGTON, NC 28405
 (910) 763-6360
 FIRM NO.: C-0713

STRUCTURAL ENGINEER
STEWART
 101 N. TRYON ST., SUITE 1400
 CHARLOTTE, NC 28202
 (704) 909-3523
 FIRM NO.: C-1051

MECHANICAL, ELECTRICAL, PLUMBING & FIRE PROTECTION ENGINEER
SABER ENGINEERING
 2923 S. TRYON ST., SUITE 280
 CHARLOTTE, NC 28203
 (704) 373-0068
 FIRM NO.: C-2130

IT / SECURITY
VERTEX TECHNOLOGY CONSULTANTS
 4700 LEBANON RD., SUITE A-1
 CHARLOTTE, NC 28227
 (980) 272-9500

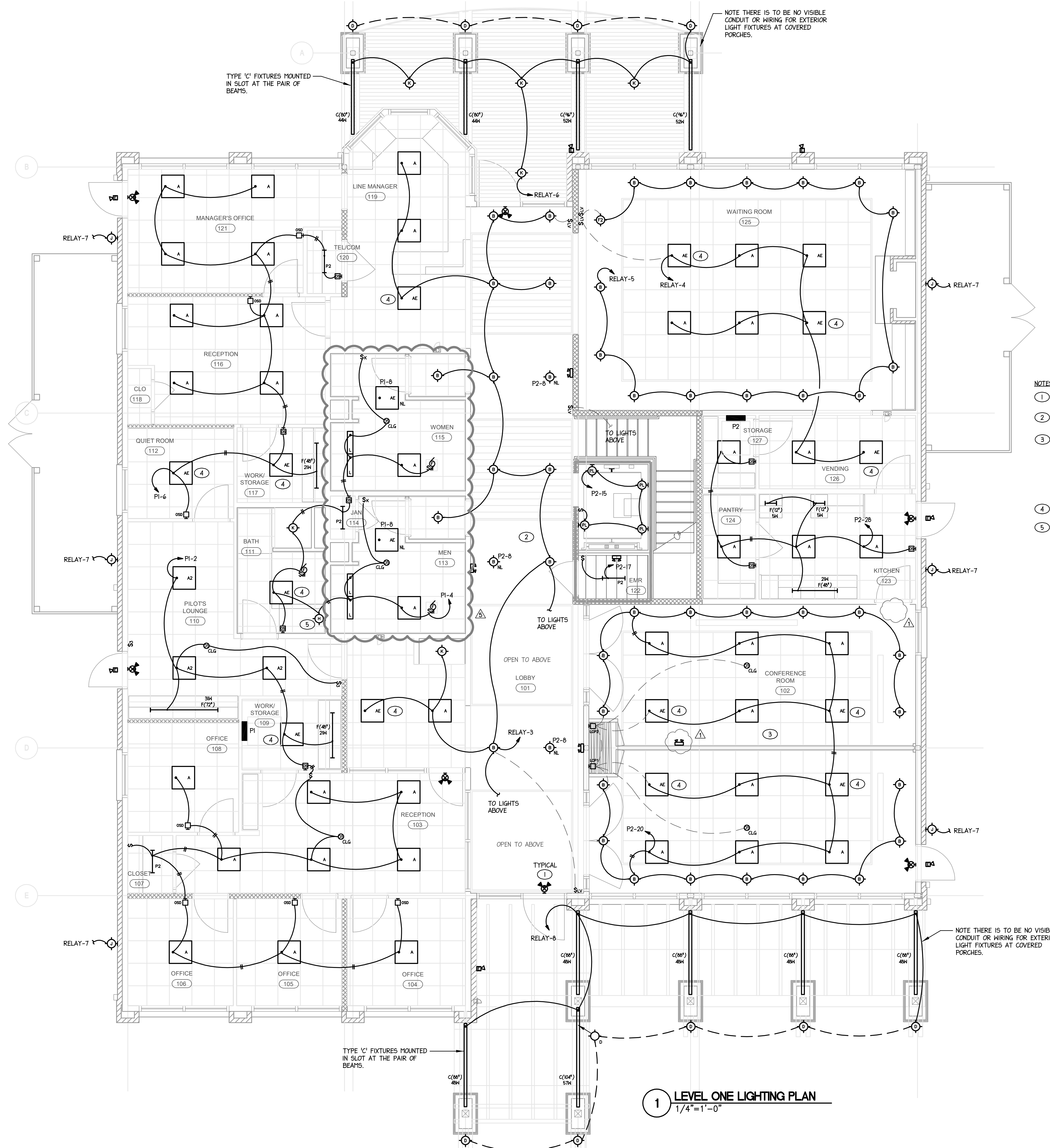
REVISIONS

NO.	DESCRIPTION	DATE
1	CODE COMMENTS	11/04/2022
2	BD-06	07/10/2023

DATE SEPTEMBER 9, 2022
 PROJECT NUMBER 9189-000

SHEET TITLE
ELECTRICAL FIRST LEVEL LIGHTING PLAN

SHEET NUMBER
E-201L



- NOTES:
- CONNECT ALL EXIT LIGHTS TO NEAREST UNSWITCHED LEG OF LOCAL EMERGENCY LIGHTING CIRCUIT, TYPICAL FOR EACH.
 - SEE ARCHITECTURAL REFLECTED CEILING PLANS AND ELEVATIONS FOR EXACT LIGHT FIXTURE MOUNTING LOCATIONS.
 - E.C. TO PROVIDE A COMPLETE AND OPERATIONAL DIMMING SYSTEM AS INDICATED ON THE PLANS FOR THE MEETING ROOMS AS MANUFACTURED BY LUTRON. SEE SHEET E-102 FOR LUTRON LIGHTING LIGHTING CONTROL REQUIREMENTS FOR THE WAITING ROOMS. THE CONFERENCE ROOMS ARE TO HAVE SEPARATE DIMMING AND OCCUPANCY SENSING AND DIMMING CONTROLS WHEN THE DIVIDER WALL IS CLOSED AND HAVE COMBINED OCCUPANCY SENSING AND DIMMING CONTROLS WHEN THE DIVIDER WALL IS OPEN. COORDINATE EXACT LIGHTING CONTROL AND LIGHT FIXTURE WIRING REQUIREMENTS AND EQUIPMENT REQUIRED WITH MANUFACTURER.
 - PROVIDE UNSWITCHED HOT LEG FOR BATTERY.
 - PROVIDE 120V CONNECTION FOR LIGHTED MIRROR. FIELD COORDINATE EXACT ROUGH-IN LOCATION WITH G.C.

1 LEVEL ONE LIGHTING PLAN
 1/4" = 1' - 0"

