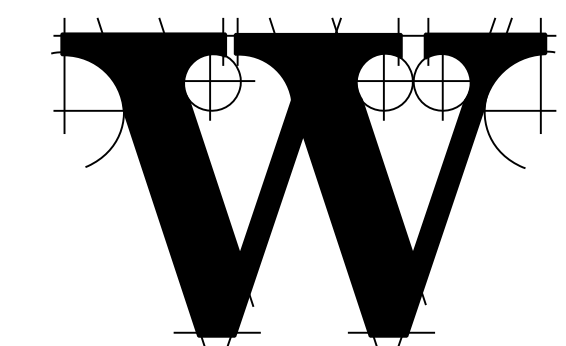


ARCHITECT



THE WILSON GROUP

P O BOX 5510
CHARLOTTE, NC 28299
(704) 331-9747

PROJECT MANAGER / CIVIL ENGINEER

TALBERT & BRIGHT

4810 SHELLEY DRIVE
WILMINGTON, NC 28405
(910) 763-5350
FIRM NO.: C-0713

STRUCTURAL ENGINEER

STEWART

101 N. TRYON ST., SUITE 1400
CHARLOTTE, NC 28202
(704) 969-3523
FIRM NO.: C-1051

MECHANICAL, ELECTRICAL, PLUMBING & FIRE PROTECTION ENGINEER

SABER ENGINEERING

2923 S. TRYON ST., SUITE 280
CHARLOTTE, NC 28203
(704) 373-0066
FIRM NO.: C-2130

IT / SECURITY

VERTEX TECHNOLOGY CONSULTANTS

4700 LEBANON RD. SUITE A-1
CHARLOTTE, NC 28227
(980) 272-9500

REVISIONS

BD-06 - JULY 10, 2023

DATE SEPTEMBER 9, 2022

PROJECT NUMBER 9189-000

SHEET TITLE
DOOR SCHEDULE AND DETAILS

SHEET NUMBER

A-601

DOOR SCHEDULE- FIRST FLOOR

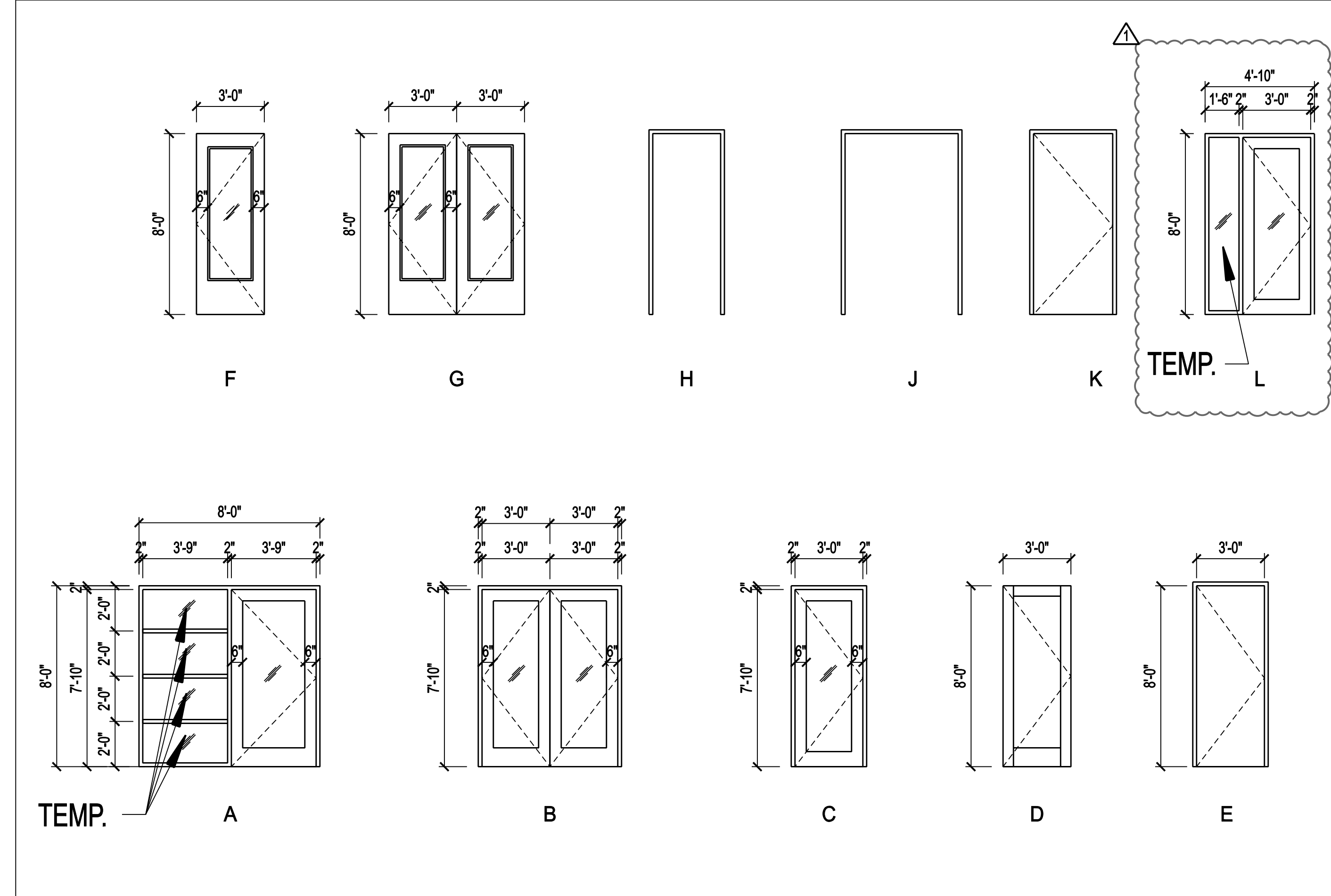
ROOM NO.	ROOM NAME	DOOR NO.	SIZE (WxH)	ELEV.	DOOR MATERIAL	FRAME MATERIAL	JAMB DETAIL	HEAD DETAIL	THRESHOLD	FIRE RATING	FRAME FIRE RATING	NOTES
FIRST LEVEL												
101	LOBBY	101X	3'-9"X 7'-10" W/ 3'-9" SIDELITE	A	ALUM. & TEMP. GLASS	ALUM.	3/A-501	9/A-601	10/A-601	-	-	FINISH COLOR TO MATCH P-3; SEE A-701
101	LOBBY	101Y	3'-9"X 7'-10" W/ 3'-9" SIDELITE	A	ALUM. & TEMP. GLASS	ALUM.	3/A-501	9/A-601	10/A-601	-	-	FINISH COLOR TO MATCH P-3; SEE A-701
102	CONFERENCE ROOM	102X	PR 3'-0"X 7'-10"	B	ALUM. & TEMP. GLASS	ALUM.	8/A-601	8/A-601	11/A-601	-	-	FINISH COLOR TO MATCH P-3; SEE A-701. ONE LEAF FIXED.
102	CONFERENCE ROOM	102Y	PR 3'-0"X 7'-10"	B	ALUM. & TEMP. GLASS	ALUM.	8/A-601	8/A-601	11/A-601	-	-	FINISH COLOR TO MATCH P-3; SEE A-701. ONE LEAF FIXED.
102	CONFERENCE ROOM	102Z	3'-0"X 8'-0"	C	ALUM. & TEMP. GLASS	ALUM.	4/A-601	5/A-601	10/A-601	-	-	FINISH COLOR TO MATCH P-3; SEE A-701
103	RECEPTION	103X	3'-0"X8'-0"	C	ALUM. & TEMP. GLASS	ALUM.	8/A-601, 9/A-601	8/A-601	11/A-601	-	-	FINISH COLOR TO MATCH P-3; SEE A-701
104	OFFICE	104X	3'-0"X8'-0"	D	STAINED WOOD	WOOD	1/A-601	2/A-601	N/A	-	-	FINISH COLOR TO MATCH P-3; SEE A-701
105	OFFICE	105X	3'-0"X8'-0"	D	STAINED WOOD	WOOD	1/A-601	2/A-601	N/A	-	-	
106	OFFICE	106X	3'-0"X8'-0"	D	STAINED WOOD	WOOD	1/A-601	2/A-601	N/A	-	-	
107	CLOSET	107X	3'-0"X8'-0"	D	STAINED WOOD	WOOD	1/A-601	2/A-601	N/A	-	-	FINISH COLOR TO MATCH P-3; SEE A-701
108	OFFICE	108X	3'-0"X8'-0"	D	STAINED WOOD	WOOD	1/A-601	2/A-601	N/A	-	-	
109	WORK/STORAGE	109X	3'-0"X8'-0"	D	STAINED WOOD	WOOD	1/A-601	2/A-601	N/A	-	-	
110	PILOTS LOUNGE	110X	PR 3'-0"X 7'-10"	F	STAINED WOOD & TEMP. GLASS	WOOD	7/A-601	7/A-601	11/A-601	-	-	
110	PILOTS LOUNGE	110Y	3'-0"X 8'-0"	C	ALUM. & TEMP. GLASS	ALUM.	4/A-601	5/A-601	10/A-601	-	-	FINISH COLOR TO MATCH P-3; SEE A-701
111	BATH	111X	3'-0"X8'-0"	D	STAINED WOOD	WOOD	1/A-601	2/A-601	11/A-601	-	-	
112	PLANNING	112X	3'-0"X8'-0"	D	STAINED WOOD	WOOD	1/A-601	2/A-601	N/A	-	-	
113	MEN	113X	CASED OPENING	H	N/A	WOOD	7/A-601 SIM.	7/A-601 SIM.	12/A-601 SIM.	-	-	
113	MEN	113Y	3'-0"X8'-0"	D	STAINED WOOD	WOOD	1/A-601	2/A-601	N/A	-	-	
114	JANITOR	114X	3'-0"X8'-0"	D	STAINED WOOD	WOOD	1/A-601	2/A-601	N/A	-	-	
115	WOMEN	115X	CASED OPENING	H	N/A	WOOD	7/A-601 SIM.	7/A-601 SIM.	12/A-601 SIM.	-	-	
115	WOMEN	115Y	3'-0"X8'-0"	D	STAINED WOOD	WOOD	1/A-601	2/A-601	N/A	-	-	
116	DIRECTOR'S OFFICE	116X	3'-0"X8'-0"	F	STAINED WOOD & TEMP. GLASS	WOOD	7/A-601	7/A-601	11/A-601	-	-	
117	WORK/STORAGE	117X	3'-0"X8'-0"	D	STAINED WOOD	WOOD	1/A-601	2/A-601	N/A	-	-	
118	CLOSET	118X	3'-0"X8'-0"	D	STAINED WOOD	WOOD	1/A-601	2/A-601	N/A	-	-	
120	TELECOM	120X	3'-6"X8'-0"	K	STAINED WOOD	WOOD	1/A-601	2/A-601	12/A-601	-	-	
121	LINEMAN'S OFFICE	121X	3'-0"X8'-0"	D	STAINED WOOD	WOOD	7/A-601	7/A-601	11/A-601	-	-	
121	LINEMAN'S OFFICE	121Y	3'-0"X8'-0"	L	ALUM. & TEMP. GLASS	ALUM.	1/A-601	2/A-601	N/A	-	-	1'-6" WIDE SIDELITE W/ TEMPERED GLAZING
121	LINEMAN'S OFFICE	121Z	3'-0"X8'-0"	C	ALUM. & TEMP. GLASS	ALUM.	4/A-601	5/A-601	10/A-601	-	-	FINISH COLOR TO MATCH P-3; SEE A-701
122	EMR	122X	3'-0"X8'-0"	D	STAINED WOOD	WOOD	7/A-601	7/A-601	11/A-601	-	-	
122	ELEVATOR		3'-0"X7'-0"		BY MANUF.	BY MANUF.	7/A-601	7/A-601	N/A	-	-	ARCHITECT TO SELECT FINISH FROM MANUF. FULL RANGE.
123	KITCHEN	123X	3'-0"X8'-0"	F	STAINED WOOD & TEMP. GLASS	WOOD	7/A-601	7/A-601	12/A-601	-	-	
123	KITCHEN	123Y	3'-0"X 8'-0"	C	ALUM. & TEMP. GLASS	ALUM.	4/A-601	5/A-601	10/A-601	-	-	FINISH COLOR TO MATCH P-3; SEE A-701
124	PANTRY	124X	3'-0"X8'-0"	D	STAINED WOOD	WOOD	1/A-601	2/A-601	N/A	-	-	
125	WAITING ROOM	N/A	N/A	N/A	N/A	N/A	14/A-501	14/A-501	11/A-601 SIM.	-	-	
126	VENDING	126X	CASED OPENING	J	N/A	WOOD	14/A-501	14/A-501	11/A-601 SIM.	-	-	
126	VENDING	126Y	3'-0"X8'-0"	F	STAINED WOOD & TEMP. GLASS	WOOD	1/A-601	2/A-601	12/A-601	-	-	
127	STORAGE	127X	3'-0"X8'-0"	D	STAINED WOOD	WOOD	1/A-601	2/A-601	12/A-601	-	-	

DOOR SCHEDULE- SECOND FLOOR

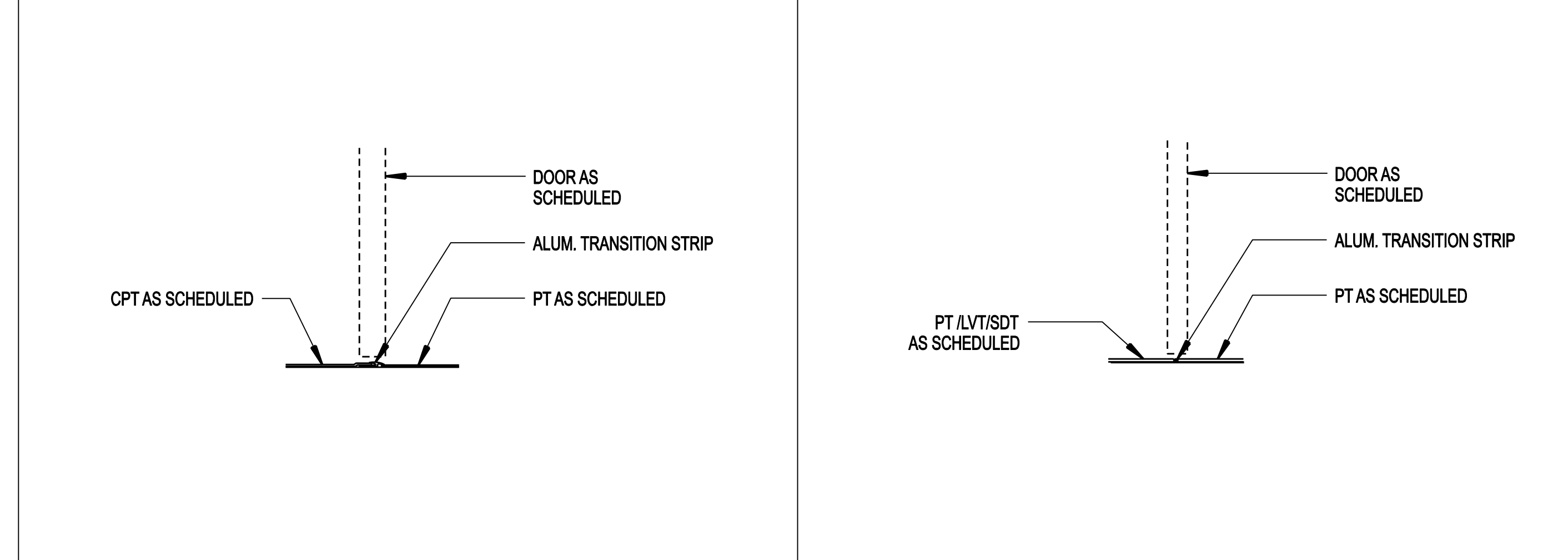
202	CONFERENCE ROOM	202X	PR 3'-0"X 8'-0"	G	STAINED WOOD & TEMP. GLASS	WOOD	7/A-601	7/A-601	N/A	-	-	
203	CLOSET	203X	3'-0"X8'-0"	D	STAINED WOOD	WOOD	1/A-601	2/A-601	12/A-601	-	-	
204	CLOSET	204X	3'-0"X8'-0"	D	STAINED WOOD	WOOD	1/A-601	2/A-601	12/A-601	-	-	
205	BATH	205X	3'-0"X8'-0"	D	STAINED WOOD	WOOD	7/A-601	7/A-601	11/A-601	-	-	
206	BATH	206X	3'-0"X8'-0"	D	STAINED WOOD	WOOD	7/A-601	7/A-601	11/A-601	-	-	
206	ELEVATOR		3'-0"X7'-0"		BY MANUF.	BY MANUF.	7/A-601	7/A-601	N/A	-	-	ARCHITECT TO SELECT FINISH FROM MANUF. FULL RANGE.
208	CONFERENCE ROOM	208X	3'-0"X8'-0"	F	STAINED WOOD & TEMP. GLASS	WOOD	7/A-601	7/A-601	N/A	-	-	
209	STORAGE	209X	3'-0"X8'-0"	F	STAINED WOOD & TEMP. GLASS	WOOD	7/A-601	7/A-601	N/A	-	-	
210	MECHANICAL	210X	3'-0"X8'-0"	D	STAINED WOOD	WOOD	1/A-601	2/A-601	N/A	-	-	
211	MECHANICAL	211X	3'-0"X8'-0"	D	STAINED WOOD	WOOD	1/A-601	2/A-601	N/A	-	-	
212	OBSERVATION DECK	212X	PR 3'-9 1/2"X 7'-10"	A	ALUM. & TEMP. GLASS	ALUM.	8/A-601	9/A-601	10/A-601	-	-	FINISH COLOR TO MATCH P-3; SEE A-701

DOOR NOTES

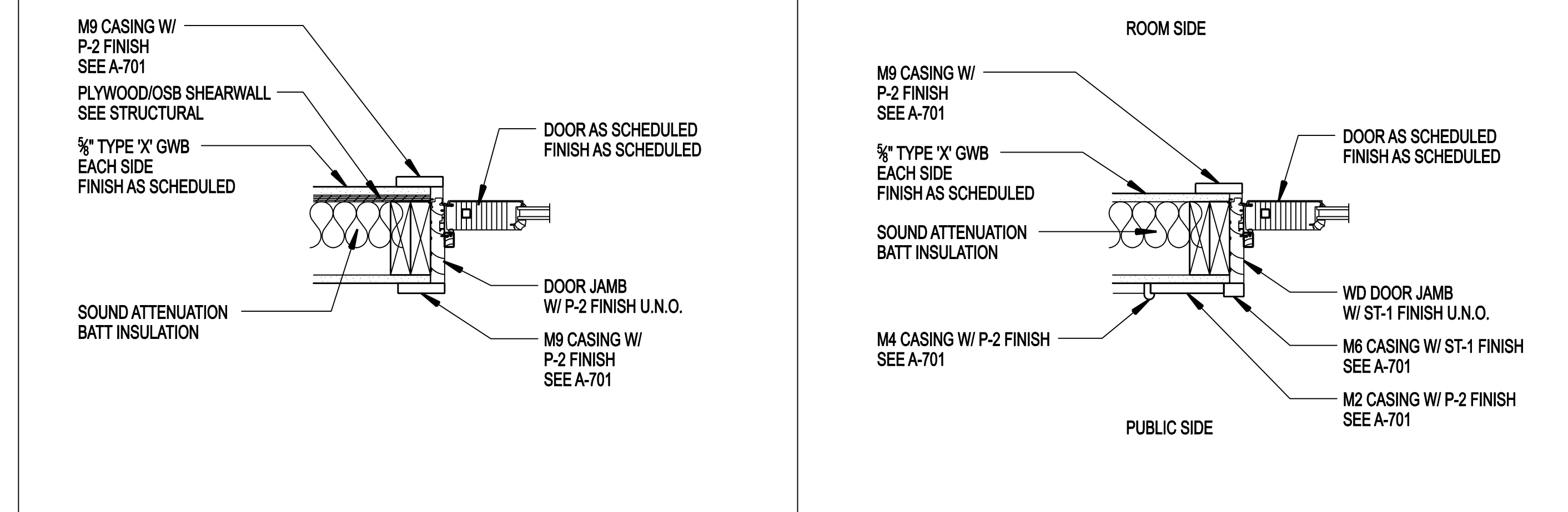
- GLASS AT DOORS TO BE TEMPERED AS REQUIRED. GLASS AT DOORS TO BE FROSTED AS NOTED.
- HEADER HEIGHTS PER ELEVATIONS.
- COORDINATE SILL/JAMB DEPTH WITH ACTUAL FINISHED WALL THICKNESS.
- SIZES GIVEN ARE TO ROUGH OPENING; VERIFY ACTUAL FRAME SIZE IN FIELD.
- COORDINATE JAMB WIDTH/OPENINGS WITH FIBER CEMENT PANEL AND REVEAL MODULE. SEE ELEVATIONS AND FIBER CEMENT DETAILS FOR INTENT.
- SEE LIFE SAFETY PLAN FOR PANIC HARDWARE LOCATIONS. SEE SPECIFICATIONS FOR HARDWARE SETS AND SCHEDULE. SEE LOW VOLTAGE DRAWINGS FOR CARD READER ACCESS DOOR INFORMATION.
- HARDWARE INSTALLER TO COORDINATE DOOR CLOSERS AT DOOR 103X WITH ADJACENT INTERIOR STOREFRONT TO PREVENT DOOR HANDLE FROM ENGAGING WALL WHEN IN OPEN POSITION.
- AT DOORS 102X AND 102 Y, ONE LEAF TO BE FIXED. COORDINATE ACTIVE AND INACTIVE LEAF W/ OWNER DURING SUBMITTAL REVIEW.



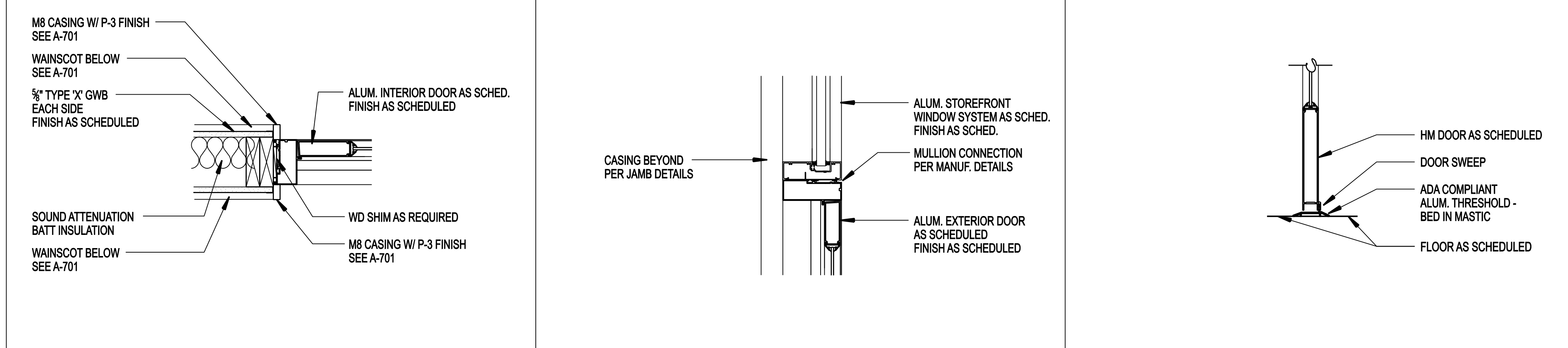
16 DOOR ELEVATIONS 1/4"=1'-0"



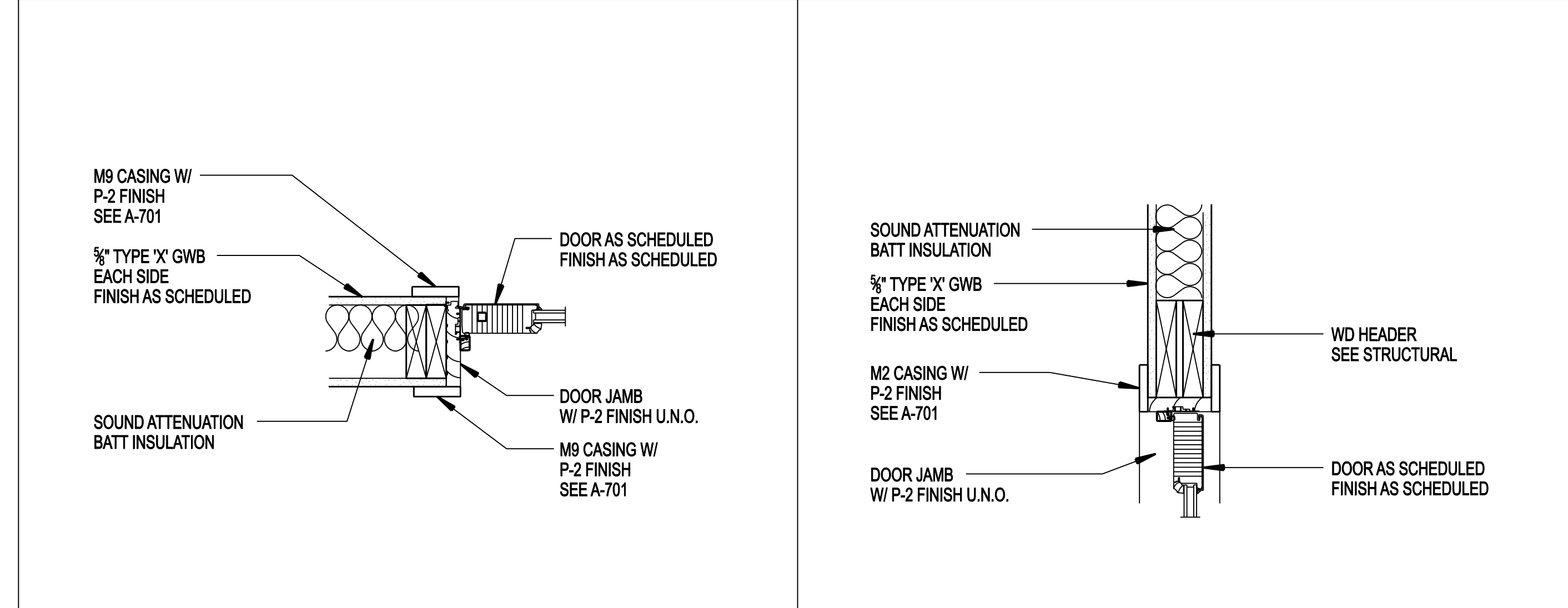
11 THRESHOLD DETAIL 1 1/2"=1'-0" **12 THRESHOLD DETAIL** 1 1/2"=1'-0"



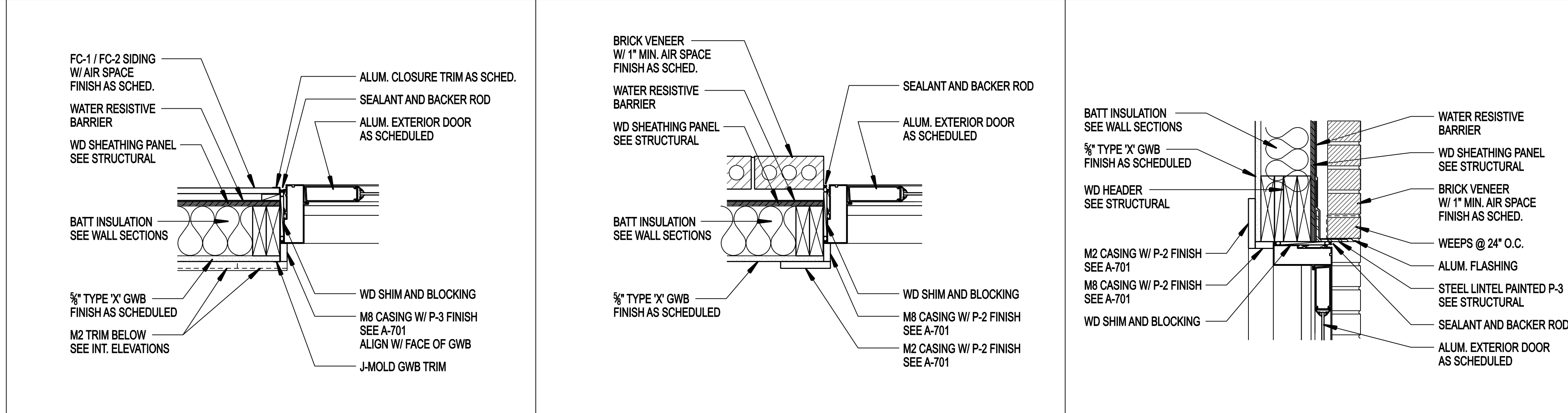
6 JAMB DETAIL AT DOOR 1 1/2"=1'-0" **7 JAMB DETAIL AT DOOR** 1 1/2"=1'-0"



8 HEAD/JAMB DETAIL AT DOOR 1 1/2"=1'-0" **9 HEAD/JAMB DETAIL AT DOOR** 1 1/2"=1'-0"



1 JAMB DETAIL AT DOOR 1 1/2"=1'-0"



5 HEAD DETAIL AT DOOR 1 1/2"=1'-0"