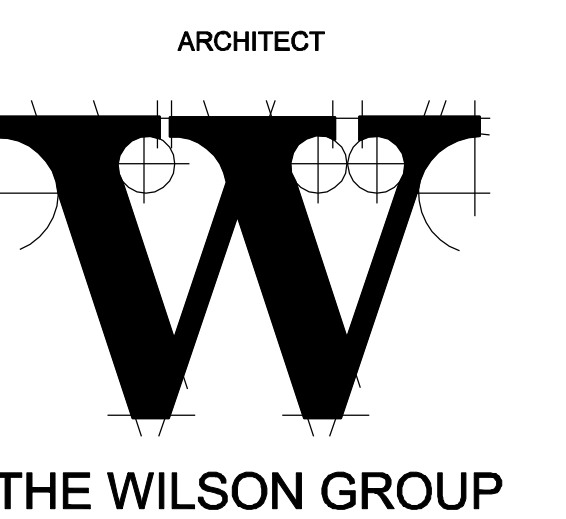
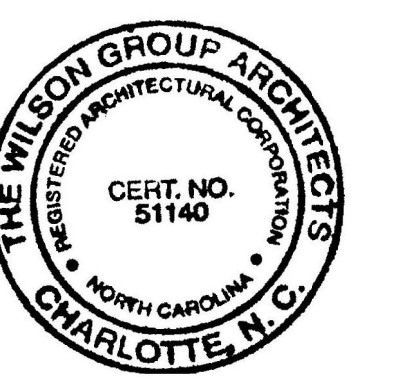


NEW TERMINAL BUILDING

WBS NO. 36237.25.15.1



P O BOX 5510
CHARLOTTE, NC 28299
(704) 331-9747

PROJECT MANAGER / CIVIL ENGINEER
TALBERT & BRIGHT

4810 SHELLEY DRIVE
WILMINGTON, NC 28405
(810) 783-5360
FIRM NO.: C-0713

STRUCTURAL ENGINEER
STEWART

101 N. TRYON ST., SUITE 1400
CHARLOTTE, NC 28202
(704) 909-3523
FIRM NO.: C-1051

MECHANICAL, ELECTRICAL, PLUMBING &
FIRE PROTECTION ENGINEER

SABER ENGINEERING
2923 S. TRYON ST., SUITE 280
CHARLOTTE, NC 28203
(704) 373-0068
FIRM NO.: C-2130

IT / SECURITY
VERTEX TECHNOLOGY CONSULTANTS
4700 LEBANON RD. SUITE A-1
CHARLOTTE, NC 28227
(860) 272-8500

REVISIONS

DATE SEPTEMBER 9, 2022

PROJECT NUMBER 9189-000

SHEET TITLE
SECOND LEVEL FLOOR PLAN

SHEET NUMBER

A-102

SF SUMMARY

	AREA	SF
FIRST LEVEL HSF	5,087	HSF
FIRST LEVEL PORCHES SF	843	UHSF
SECOND LEVEL HSF	1,948	HSF
SECOND LEVEL DECK SF	416	UHSF
TOTAL HSF	7,035	HSF

WALL LEGEND

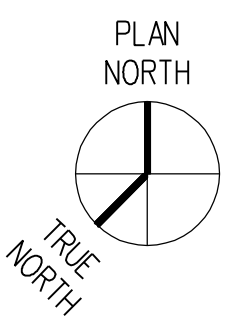
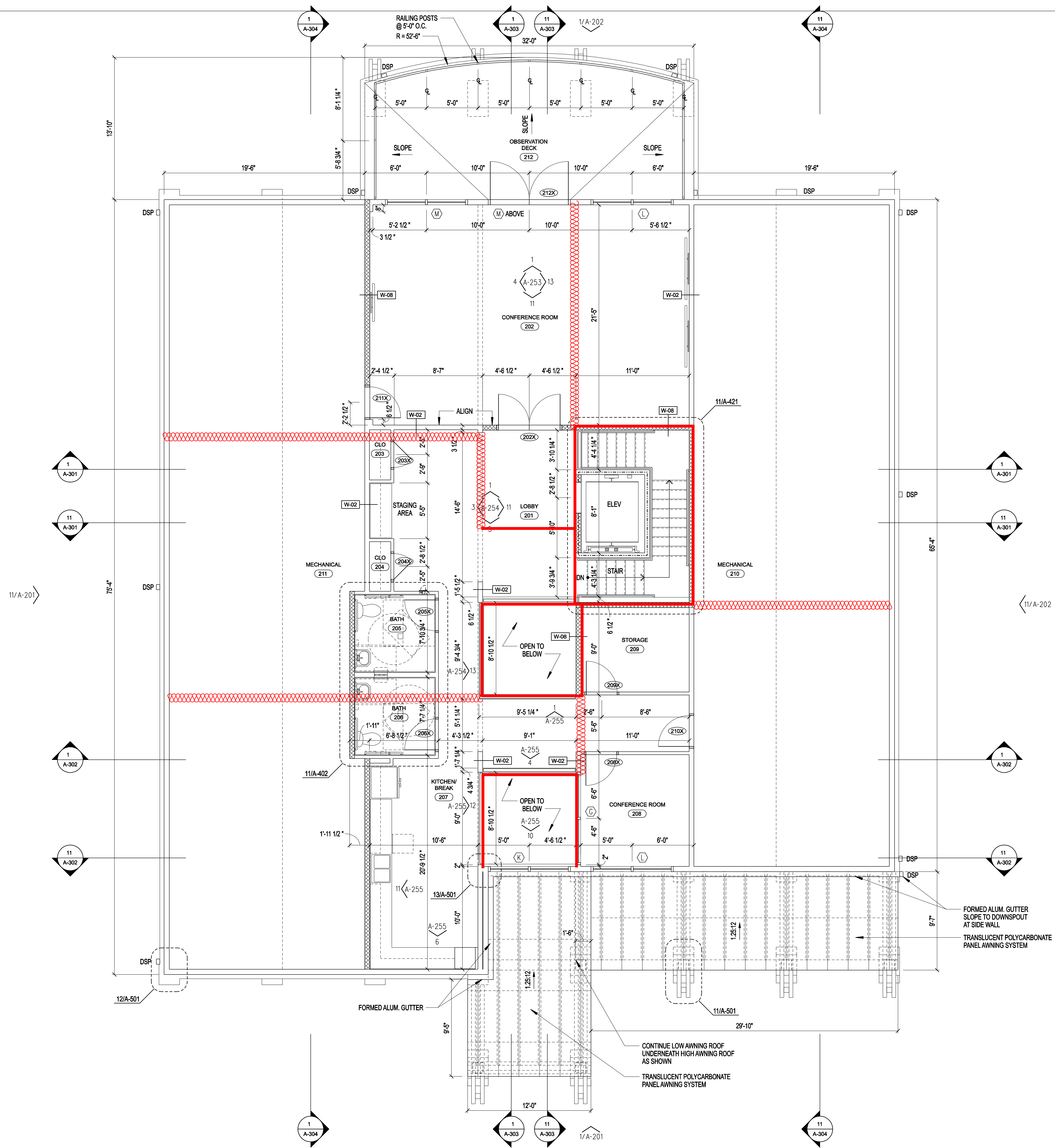
1 HR RATED WALL	-----
STUD WALL	=====
BRICK VENEER	
SHEAR WALL	

NOTES

- SEE LIFE SAFETY PLANS FOR FEC AND KNOX BOX LOCATIONS.
- SEE STRUCTURAL FOR SHEAR WALL LOCATIONS AND INFORMATION. COORD. SHEATHING SIDE W/ ARCHITECTURAL AND STRUCTURAL.
- COORDINATE DRILLED HOLES/PENETRATIONS IN STRUCTURAL STEEL AS REQUIRED FOR CONDUITS, WIRING, ETC. W/ STRUCTURAL PRIOR TO INSTALLATION.
- PROVIDE (3) RACKS OF COATED WIRE SHELVING IN THE FOLLOWING ROOMS: CLOSET 107, CLOSET 118, TEL/COM 120, PANTRY 124, STORAGE 127, CLOSET 203, CLOSET 204

Draftstopping Material

Open to below / edge of floor decking



1/4"=1'-0"