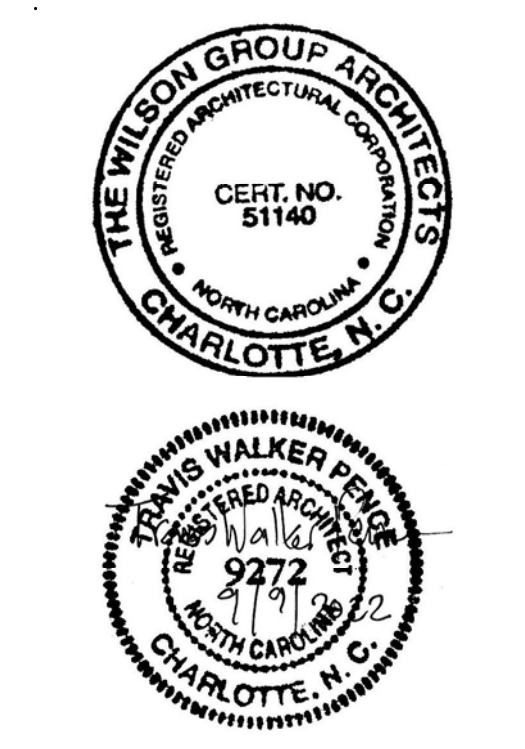
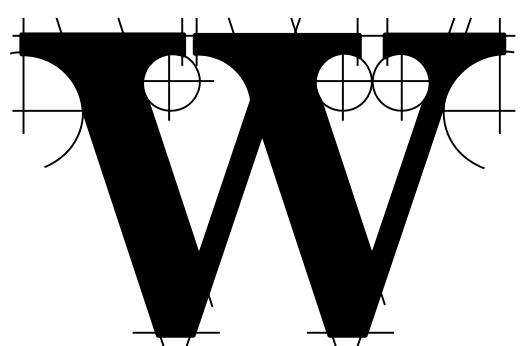


NEW TERMINAL BUILDING

WBS NO. 36237.25.15.1



ARCHITECT



THE WILSON GROUP

P O BOX 5510
CHARLOTTE, NC 28299
(704) 331-9747

PROJECT MANAGER / CIVIL ENGINEER

TALBERT & BRIGHT

4810 SHELLEY DRIVE
WILMINGTON, NC 28405
(910) 763-5350
FIRM NO.: C-0713

STRUCTURAL ENGINEER

STEWART

101 N. TRYON ST., SUITE 1400
CHARLOTTE, NC 28202
(704) 969-3523
FIRM NO.: C-1051

MECHANICAL, ELECTRICAL, PLUMBING & FIRE PROTECTION ENGINEER

SABER ENGINEERING

2923 S. TRYON ST., SUITE 280
CHARLOTTE, NC 28203
(704) 373-0088
FIRM NO.: C-2130

IT / SECURITY

VERTEX TECHNOLOGY CONSULTANTS

4700 LEBANON RD., SUITE A-1
CHARLOTTE, NC 28227
(980) 272-9500

REVISIONS

BD-06 - JULY 10, 2023

DATE SEPTEMBER 9, 2022

PROJECT NUMBER 9189-000

SHEET TITLE

FIRST LEVEL FLOOR PLAN

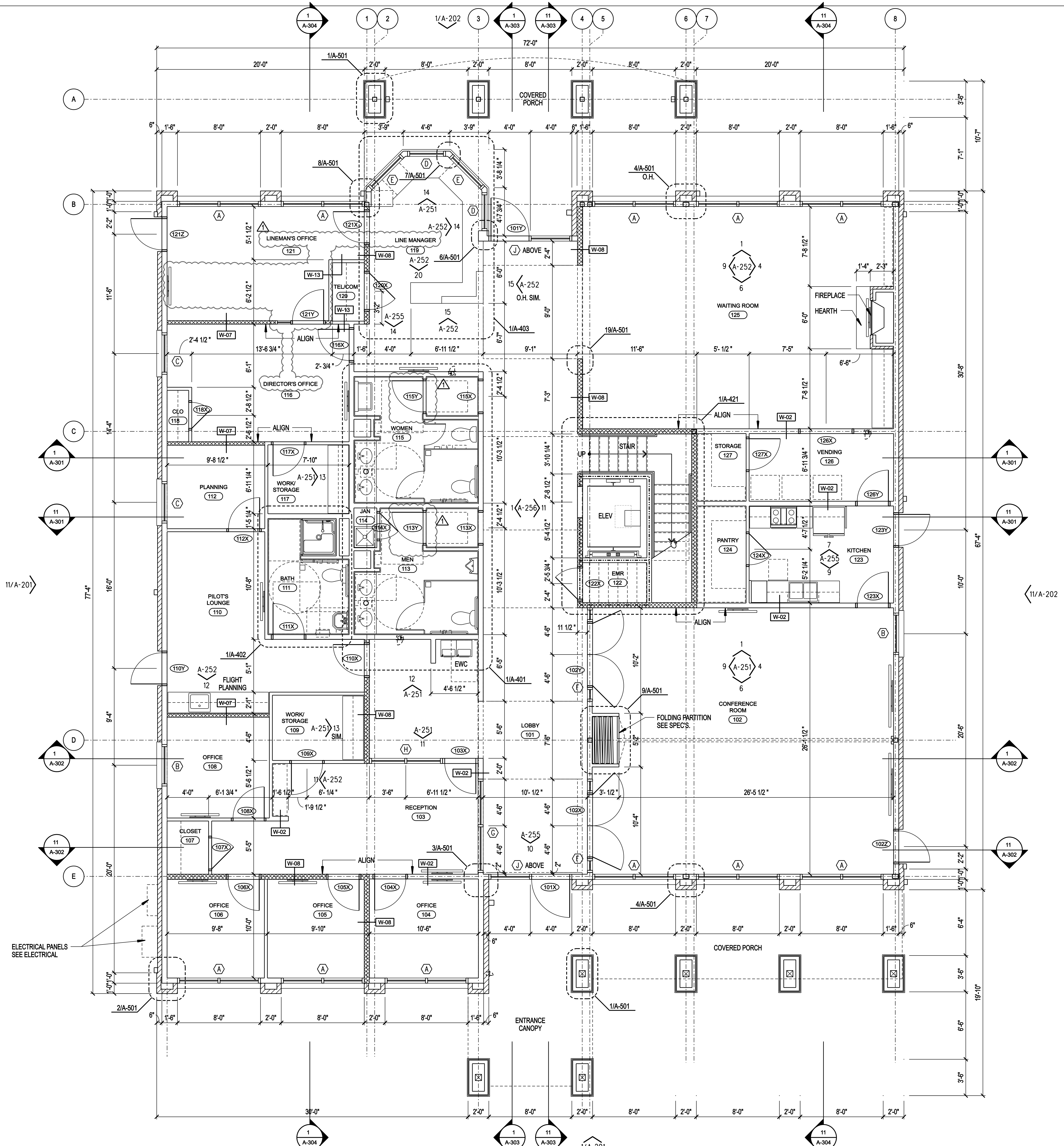
SHEET NUMBER

A-101

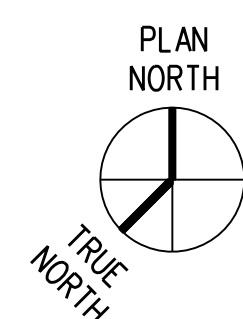
SF SUMMARY	
	AREA SF
FIRST LEVEL HSF	5,087 HSF
FIRST LEVEL PORCHES SF	843 UHSF
SECOND LEVEL HSF	1,948 HSF
SECOND LEVEL DECK SF	416 UHSF
TOTAL HSF	7,035 HSF

WALL LEGEND	
1 HR RATED WALL	-----
STUD WALL	-----
BRICK VENEER	-----
SHEAR WALL	-----

- NOTES
1. SEE LIFE SAFETY PLANS FOR FEC AND KNOX BOX LOCATIONS.
 2. SEE STRUCTURAL FOR SHEAR WALL LOCATIONS AND INFORMATION. COORD. SHEATHING SIDE W/ ARCHITECTURAL AND STRUCTURAL.
 3. COORDINATE DRILLED HOLES/PENETRATIONS IN STRUCTURAL STEEL AS REQUIRED FOR CONDUITS, WIRING, ETC. W/ STRUCTURAL PRIOR TO INSTALLATION.
 4. PROVIDE (3) RACKS OF COATED WIRE SHELVING IN THE FOLLOWING ROOMS: CLOSET 107, CLOSET 118, TEL/COM 120, PANTRY 124, STORAGE 127, CLOSET 203, CLOSET 204



ELECTRICAL PANELS SEE ELECTRICAL



1 FIRST LEVEL FLOOR PLAN

1/4"=1'-0"