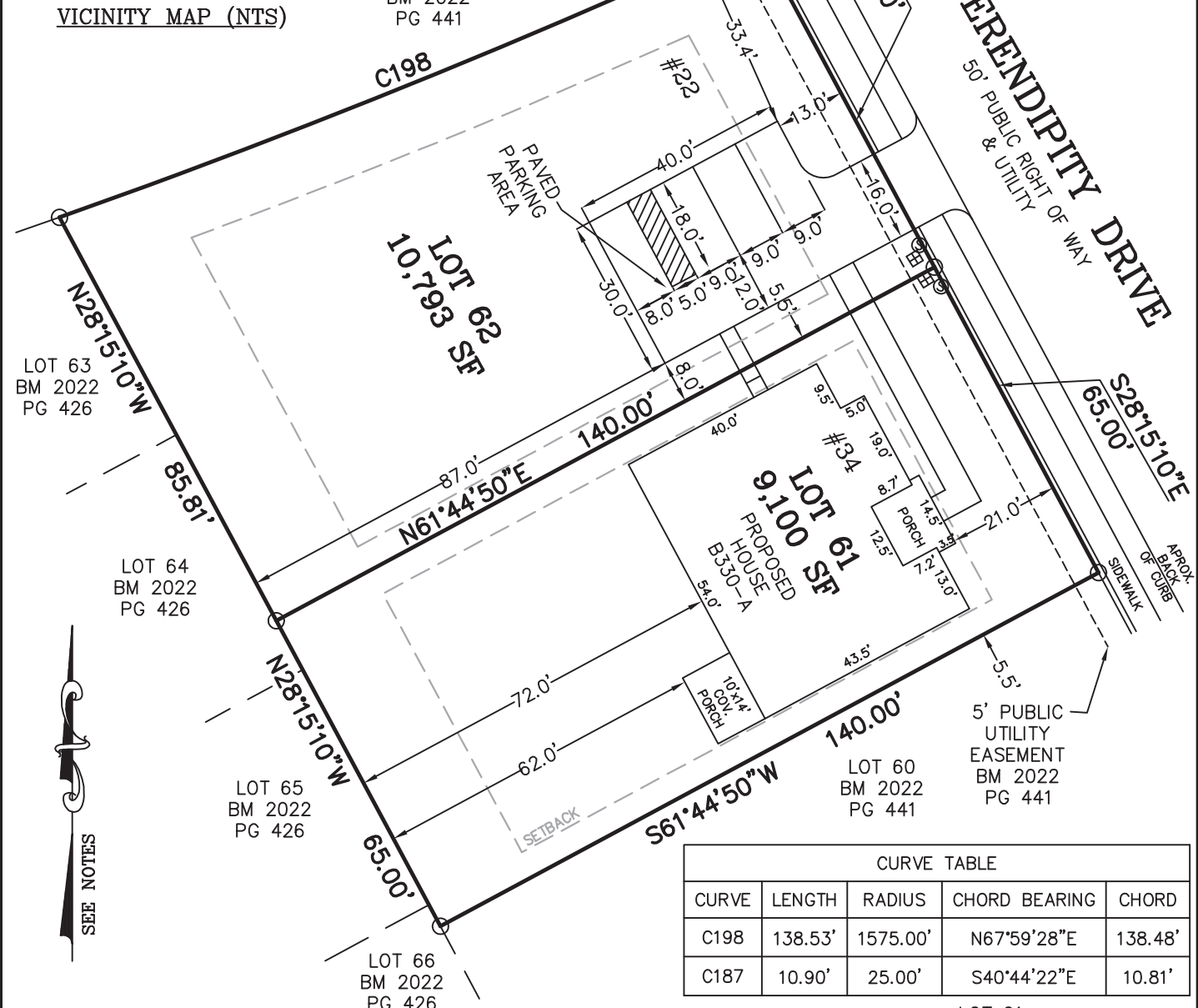


**LEGEND**

- MATHEMATICAL POINT
- CONTROL CORNER
- ▣ WATER METER
- ⊙ SEWER CLEAN OUT
- ⊗ FIRE HYDRANT



**NOTES:**

- REFERENCE HARNETT CO. BM 2022, PG 434-448 FOR BOUNDARY INFORMATION, NORTH INDEX & TIE LINES TO SUBDIVISION CONTROL CORNERS.
- ZONED: RA-30, RA-40, & CONSERVATION.
- SETBACKS:  
 43' LOT WIDTH:  
 FRONT YARD-20', SIDE YARD-4' & 4' OR 0' & 8', REAR YARD-20', CORNER YARD-12'.  
 >43' LOT WIDTH:  
 FRONT YARD-20', SIDE YARD-5', REAR YARD-20', CORNER YARD-12'.
- PROPERTY IS NOT LOCATED WITHIN A SPECIAL FLOOD HAZARD AREA AS SCALED FROM THE NFIP FIRM No. 3720065500L (EFFECTIVE DATE: JULY 19, 2022).

CURVE TABLE				
CURVE	LENGTH	RADIUS	CHORD BEARING	CHORD
C198	138.53'	1575.00'	N67°59'28"E	138.48'
C187	10.90'	25.00'	S40°44'22"E	10.81'

LOT 61	
TOTAL ESTIMATED IMPERVIOUS-	2,788 SF
SITE	SQ. FT.
HOUSE	2,394
DRIVEWAY	0
SIDEWALK	236
COV. PORCH	140
A/C PAD	9

LOT 62	
TOTAL ESTIMATED IMPERVIOUS-	1,477 SF
SITE	SQ. FT.
PARKING/SW	1,477

**PERMIT PLAN LOTS: 61 AND 62**

SERENITY SUBDIVISION, PHASE 1  
 HECTOR'S CREEK TOWNSHIP, HARNETT COUNTY, NC

SURVEYED FOR  
**DAVID WEEKLEY HOMES**  
 1901 N. HARRISON AVENUE, SUITE 200  
 CARY, NC 27513

I HEREBY CERTIFY THAT THE BUILDING WILL LIE WHOLLY ON THE LOT. THIS PLAT IS OF AN EXISTING PARCEL OF LAND. THIS IS NOT A SURVEY AND NOT FOR RECORDATION PURPOSES.

**MSS LAND CONSULTANTS, PC**  
 "Committed to Total Quality Service"  
 Firm License: C-2070  
 E S T. 1 9 9 8

6118 St. Giles St Phone (919) 510-4464  
 (Suite E) Fax (919) 510-9102  
 Raleigh, NC 27612 Email: gowersw@mssland.com

**PRELIMINARY PLAN**

WADE A. GOWERS, PLS L-4639

O:\\_DWHOMES\DWH-22-02.dwg(61-62 SALES CENTER.dwg, Layout1, 9/1/2022 1:42:17 PM, printcib, 1:1