

2018 APPENDIX B BUILDING CODE SUMMARY FOR ALL COMMERCIAL PROJECTS

Name of Project: LAKESIDE SELF STORAGE Address: 5556 NC 210 N ANGER, NC Zip Code 27501

LEAD DESIGN PROFESSIONAL G. CLEVELAND PATE, PLLC ARCHITECTURE-PLANNING Designer FIRM NAME LICENSE # TELEPHONE # EMAIL

2018 NC BUILDING CODE New Building Addition Renovation

2018 NC EXISTING BUILDING CODE: EXISTING: Prescriptive Repair Chapter 14 Alteration: Level 1 Level II Level III

CONSTRUCTED: (date) NA CURRENT OCCUPANCIES (CH.3): NA RENOVATED: (date) NA PROPOSED OCCUPANCIES (CH.3): SI SELF STORAGE

RISK CATEGORY (TABLE 1604.5): CURRENT PROPOSED I II III IV

BASIC BUILDING DATA

Construction Type: I-A II-A III-A IV V-A I-B II-B III-B Construction Class: I II III IV V Flood Hazard Area: No Yes

Table with 4 columns: FLOOR, EXISTING (SQ FT), NEW (SQ FT), SUB-TOTAL. Row 1: FIRST, 6,000, 6,000. Row 2: TOTAL, 6,000.

ALLOWABLE AREA PRIMARY OCCUPANCY CLASSIFICATION

Assembly Business Educational Factory Hazardous Institutional Mercantile Residential Storage Utility and Miscellaneous

ACCESSORY OCCUPANCY CLASSIFICATIONS: NA

INCIDENTAL USES (TABLE 509): NA

SPECIAL USES (CHAPTER 4-LIST CODE SECTIONS): NA

SPECIAL PROVISIONS: (CHAPTER 5-LIST CODE SECTIONS):

MIXED OCCUPANCIES: No Yes Separation Hr. Exception

Incidental Use Separation (508.2.5) This separation is not exempt as a Non-Separated Use (see exception) Non-Separated Use (508.3) Separated Use (508.4)

Table with 4 columns: Story No., Description and Use, (A) Bldg. Area Per Story (Actual), (B) Table 506.2 d Area, (C) Area For Frontage Increase, (D) Allowable Floor Area Unlim'd.

1 Frontage area increases from Section 506.2 are computed thus: a. Perimeter which fronts a public way or open space having 20 feet min. width = ft.(F) b. Total Building Perimeter = ft.(P) c. Ratio (F/P) = (F/P) d. W=Minimum with of public way = ft.(W)

ALLOWABLE HEIGHT

Table with 4 columns: ALLOWABLE, SHOWN ON PLANS, CODE REFERENCE. Row 1: building ht. in feet (table 504.3)2 55' 10'-4" +- 1 Row 2: building ht. in stories(table 504.4)3 2 1

1. Provide code reference if the "Shown on Plans" quantity is not based on Table 504.3 or 504.4 2. The maximum height of th air traffic control towers must comply with Table 412.3.1 3. The maximum height of open parking garages must comply with Table 406.5.4

FIRE PROTECTION REQUIREMENTS

Table with 10 columns: BUILDING ELEMENT, FIRE SEPARATION DISTANCE (FEET), RATING, DETAIL AND SHEET, DESIGN # FOR RATED ASSEM, DESIGN # FOR RATED JOINTS, DESIGN # FOR RATED ADJTS, SEE PME, SEE UL DETAILS

PERCENTAGE OF WALL OPENING CALCULATION

Table with 4 columns: FIRE SEPARATION DISTANCE (FT) FROM PROPERTY LINE, DEGREE OF OPENINGS PROTECTION(705.B), ALLOWABLE AREA (X), ACTUAL SHOWN ON PLANS (X)

LIFE SAFETY SYSTEM REQUIREMENTS

Table with 2 columns: Requirement, Yes/No/Exception

LIFE SAFETY PLAN REQUIREMENTS SEE LIFE SAFETY PLANS (ON SMALLER BLDGS INCORP INTO FLOOR PLAN)

- Fire and/or smoke rated wall locations (Chapter 7) NA Assumed and real property line locations NA SEE SITE/CIVL Exterior wall opening area with respect to distance to assumed property lines (705.8) NA

ACCESSIBLE DWELLING UNITS (SECTION 1107)

Table with 7 columns: Total Units, Access. Units Req., Access. Units Provided, Type A Units Req., Type A Units Provided, Type B Units Req., Type B Units Provided

ACCESSIBLE PARKING (SECTION 1106)

Table with 6 columns: LOT OR PARKING AREA, TOTAL # OF PARK. SPACES, # OF ACCESSIBLE SPACES, REG. W/S' ACCESS AISLE, 132" ACCESS AISLE, VAN SPACE W/B' ACCESS AISLE, TOTAL # ACCESSIBLE PROVIDED

PLUMBING FIXTURE REQUIREMENTS

Table with 10 columns: USE, WATER CLOSET, URINALS, LAVS, SHOWERS & TUBS, DRINKING FOUNTAINS, NOT REQ.

SPECIAL APPROVALS

Special Approval: (Local jurisdiction, Department of Insurance, OSC, DPI, DHHS, ICC, etc. describe below) SEE STRUCTURAL FOR SPECIAL INSPECTIONS FORM

STRUCTURAL DESIGN (SEE STRUCTURAL FOR ADDITIONAL DATA)

DESIGN LOADS Importance Factor: Wind (W) 1.0 Snow(S) 1.0 Seismic(Se) 1.0 Live Loads: Roof 20 PSF Mezzanine NA PSF Floor NA PSF Floor 125 PSF Ground Snow Load: 15 PSF Wind Load: Basic Wind Speed 115 mph (ASCE-7) Exposure Category C Wind Base Shears(for MWFRS) Vx=119kP Vy=92kP

ENERGY SUMMARY

ENERGY REQUIREMENTS:

The following data shall be considered minimum and any special attribute required to meet the energy code shall also be provided. Each Designer shall furnish the required portions of the project information for the plan data sheet.

Existing building envelope complies with code: No Yes (Provide code or statutory reference). CLIMATE ZONE: 3A 4 4A 5 METHOD OF COMPLIANCE: Prescriptive (Energy Code) Performance (Energy Code)

THERMAL ENVELOPE

ROOF/CEILING ASSEMBLY (EACH ASSEMBLY) Description of Assembly LIGHT FRAMING AND METAL ROOFING U-Value of total assembly R-Value of insulation Skylights in each assembly

EXTERIOR WALLS (EACH ASSEMBLY)

Description of Assembly STUD BEARING, SHEATHING, BRICK, & MTL SIDING U-Value of total assembly R-Value of insulation Openings (windows or doors with glazing) Skylights in each assembly

WALLS BELOW GRADE (EACH ASSEMBLY)

Description of assembly U-Value of total assembly R-Value of insulation FLOORS OVER UNCONDITIONED SPACE (EACH ASSEMBLY)

Description of assembly U-Value of total assembly R-Value of insulation FLOORS SLAB ON GRADE (EACH ASSEMBLY)

Description of assembly CONIC SLAB OVER VB & 4" OF CLEAN STONE U-Value of total assembly R-Value of insulation Horizontal/Vertical requirement Slab heated NO

MECHANICAL SUMMARY MECHANICAL SYSTEMS, SERVICE SYSTEMS AND EQUIPMENT

THERMAL ZONE UNCONDITIONED Winter dry bulb Summer dry bulb INTERIOR DESIGN CONDITIONS Winter dry bulb Summer dry bulb Relative humidity BUILDING HEATING LOAD BUILDING COOLING LOAD MECHANICAL SPACING CONDITIONING SYSTEM Unitary Description of unit Heating efficiency Cooling efficiency Size Category of unit Boiler Size Category, if oversized, state reason: NA Chiller Size Category, if oversized, state reason:

LIST EQUIPMENT EFFICIENCIES ELECTRICAL SUMMARY

ELECTRICAL SYSTEM AND EQUIPMENT Method of Compliance: SEE ABOVE Energy Code: Prescriptive Performance ASHRAE 90.1: Prescriptive Performance Lighting schedule (each fixture type) lamp type required in fixture number of lamps in fixture ballast type used in the fixture number of ballasts in fixture total wattage per fixture total interior wattage specified vs. allowed (whole build. or space by space) total exterior wattage specified vs. allowed

Additional Prescriptive Compliance NOT REQ. PER STATUE 131 BUT EFFICIENT EQUIPMENT PROVIDED C406.2 MORE EFFICIENT HVAC EQUIP. PERFORM. C406.3 REDUCED LIGHTING POWER DENSITY C406.4 ENHANCED DIGITAL LIGHTING CONTROLS C406.5 ON SITE RENEWABLE ENERGY C406.6 DEDICATED OUTDOOR AIR SYSTEM C406.7 REDUCED ENERGY USE IN SERVICE WATER HTG.

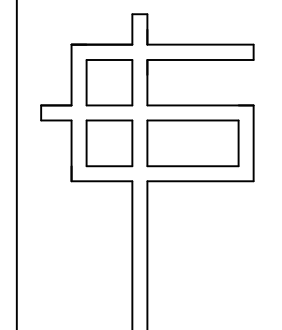
LAKESIDE STORAGE

ANGER, NC BLDG. D

COPYRIGHT 2022 DRAWINGS REMAIN THE PROPERTY OF THE ARCHITECT AND CANNOT BE COPIED OR ALTERED WITHOUT THE ARCHITECT'S PERMISSION

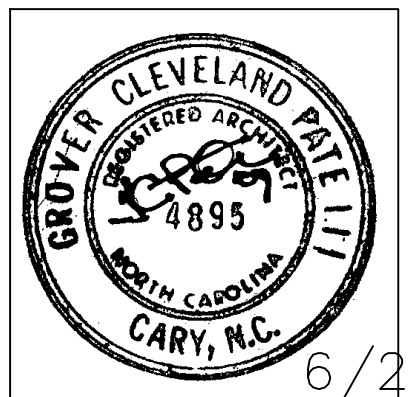
GENERAL NOTES:

REV. DATE: REVISION DESCRIPTION



G. CLEVELAND PATE, PLLC Architecture + Planning 6013 Fordland Drive, Raleigh, NC 27608 919-851-0052

SEALS:



APPENDIX B

Table with 3 columns: SHEET, DESIGNED BY, DRAWN BY, CHECKED BY, APPROVED BY, OF, LAKESIDE, LAKESIDEANG, DATE

LAKESIDE STORAGE

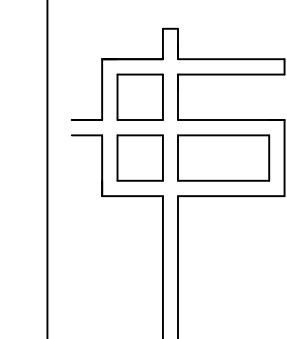
ANGIER, NC  
BLDG. D

©COPYRIGHT 2022 DRAWINGS REMAIN THE PROPERTY OF THE ARCHITECT AND CANNOT BE COPIED OR ALTERED WITHOUT THE ARCHITECT'S PERMISSION. PROJECTS ARE SITE SPECIFIC AND CANNOT BE REPRODUCED ON MULTIPLE SITES WITHOUT WRITTEN CONSENT OF THE ARCHITECT.

GENERAL NOTES:

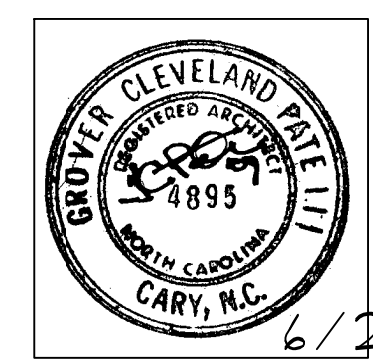
REV. DATE: REVISION DESCRIPTION

REV. DATE:	REVISION DESCRIPTION



G. CLEVELAND PATE, PLLC  
Architecture • Planning  
6013 Fordland Drive, Raleigh, NC 27606  
919-851-0052

SEALS:

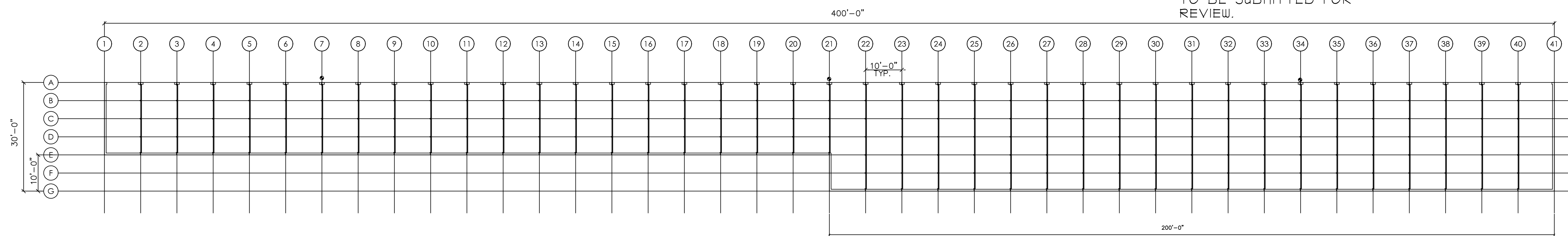


6/27/22

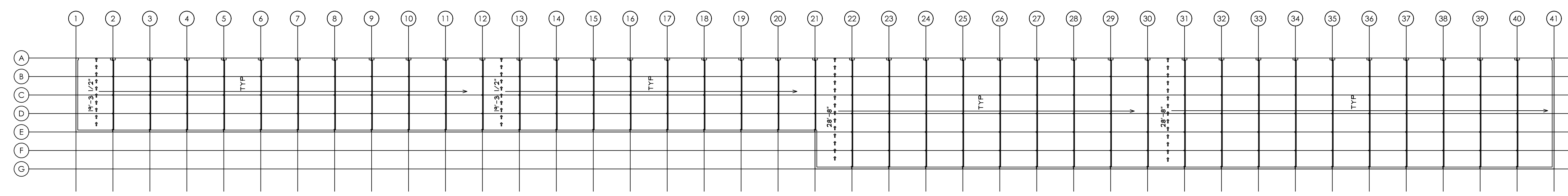
PLAN  
NON CLIMATE  
CONTROLLED

GCP	GCP	SHEET:
DESIGNED BY:	DRAWN BY:	A-1
GCP	GCP	OF:
CHECKED BY:	APPROVED BY:	DATE:
LAKESIDE	LAKESIDEANG	6/27/22
CAD FILE NAME:	PROJECT #	DATE:

ALL ROLL UP DOORS  
BY JANUS. SHOP DWGS.  
TO BE SUBMITTED FOR  
REVIEW.

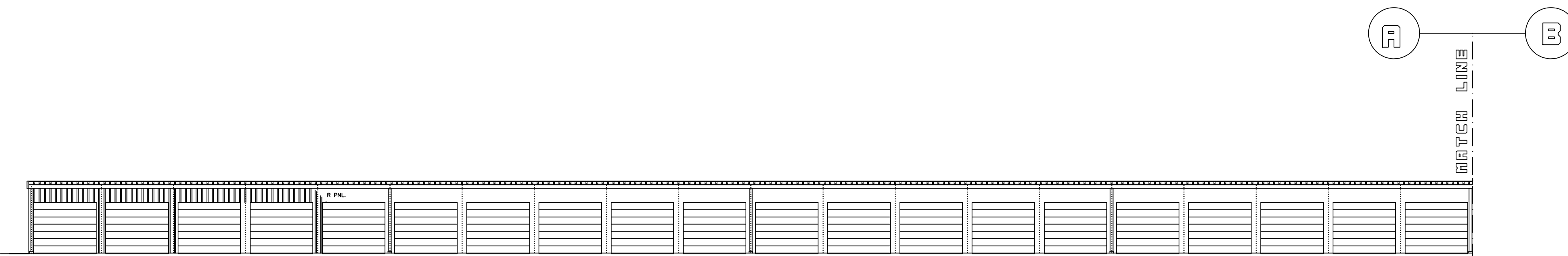


1 FLOOR PLAN NON CLIMATE CONTROLLED  
A-1 1/16" = 1'-0"



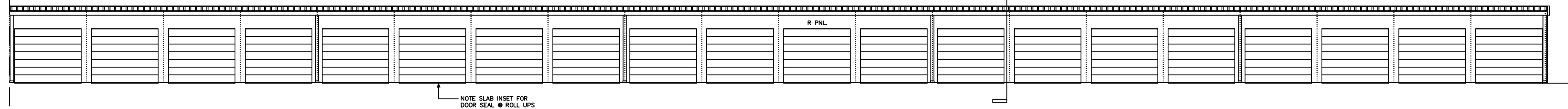
2 LIFE SAFETY PLAN NON CLIMATE CONTROLLED  
A-1 1/16" = 1'-0"

NO OCCUPANTS IN CLIMATE  
CONTROLLED BLDGS. NO  
MAN DOORS, ROLL UP ONLY  
IN STORAGE UNITS.



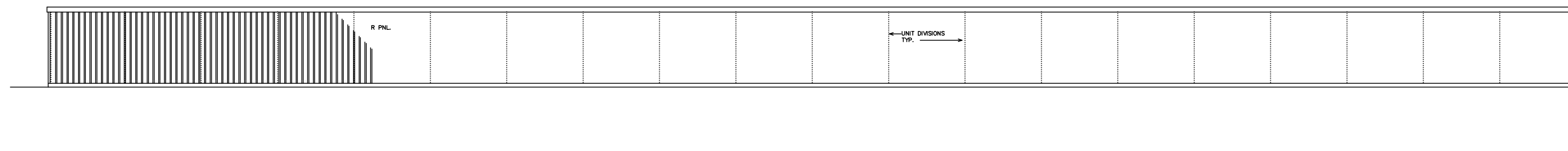
ALL ROLL UP DOORS BY JANUS  
 PROVIDE SHOP DWGS FOR REVIEW  
 COOR #/STRUCTURAL STUD FRAMING.

1 FRONT ELEVATION A  
 A-2 3/32" = 1'-0"



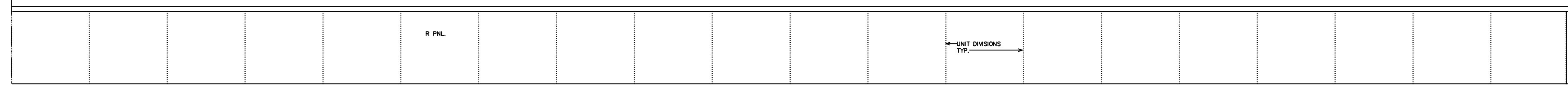
NOTE SLAB INSET FOR  
 DOOR SEAL @ ROLL UPS

2 FRONT ELEVATION B  
 A-2 3/32" = 1'-0"



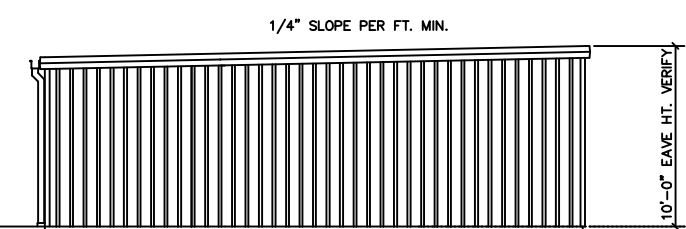
UNIT DIVISIONS  
 TYP.

3 REAR ELEVATION C  
 A-2 3/32" = 1'-0"

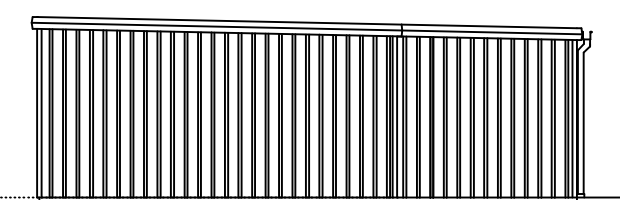


UNIT DIVISIONS  
 TYP.

4 REAR ELEVATION D  
 A-2 3/32" = 1'-0"



5 RIGHT SIDE ELEV.  
 A-2 3/32" = 1'-0"



6 LEFT SIDE ELEV.  
 A-2 3/32" = 1'-0"

LAKESIDE STORAGE

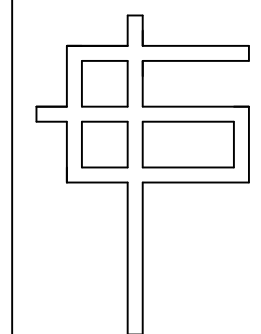
ANGIER, NC  
 BLDG. D

© COPYRIGHT 2022 DRAWINGS REMAIN THE PROPERTY  
 OF THE ARCHITECT AND CANNOT BE COPIED OR  
 ALTERED WITHOUT THE ARCHITECT'S PERMISSION.  
 PROJECTS ARE SITE SPECIFIC AND CANNOT BE  
 REPRODUCED ON MULTIPLE SITES WITHOUT WRITTEN  
 CONSENT OF THE ARCHITECT.

GENERAL NOTES:

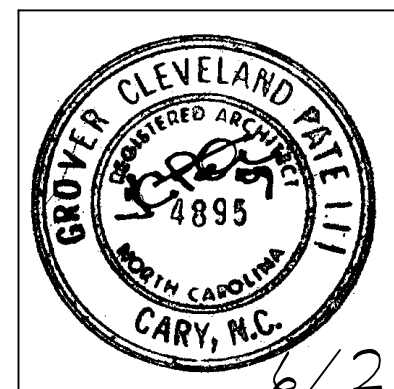
REV. DATE: REVISION DESCRIPTION

REV. DATE:	REVISION DESCRIPTION



G. CLEVELAND PATE, PLLC  
 Architecture • Planning  
 6013 Fordland Drive, Raleigh, NC 27606  
 919-851-0052

SEALS:



6/21/22

ELEVATIONS

GCP	GCP	SHEET:
DESIGNED BY:	DRAWN BY:	A-2
GCP	GCP	
CHECKED BY:	APPROVED BY:	OF:
LAKESIDE	LAKESIDEANG	6/21/22
CAD FILE NAME:	PROJECT #	DATE:

# COOR. W/STRUCTURAL

LAKESIDE STORAGE

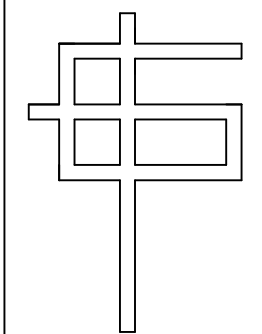
ANGIER, NC  
BLDG. D

© COPYRIGHT 2022 DRAWINGS REMAIN THE PROPERTY OF THE ARCHITECT AND CANNOT BE COPIED OR ALTERED WITHOUT THE ARCHITECT'S PERMISSION. PROJECTS ARE SITE SPECIFIC AND CANNOT BE REPRODUCED ON MULTIPLE SITES WITHOUT WRITTEN CONSENT OF THE ARCHITECT.

GENERAL NOTES:

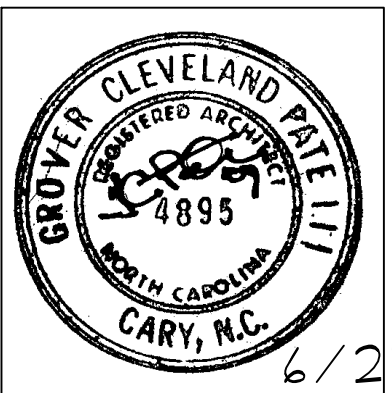
REV. DATE: REVISION DESCRIPTION

REV. DATE:	REVISION DESCRIPTION



G. CLEVELAND PATE, PLLC  
Architecture • Planning  
6013 Fordland Drive, Raleigh, NC 27606  
919-851-0052

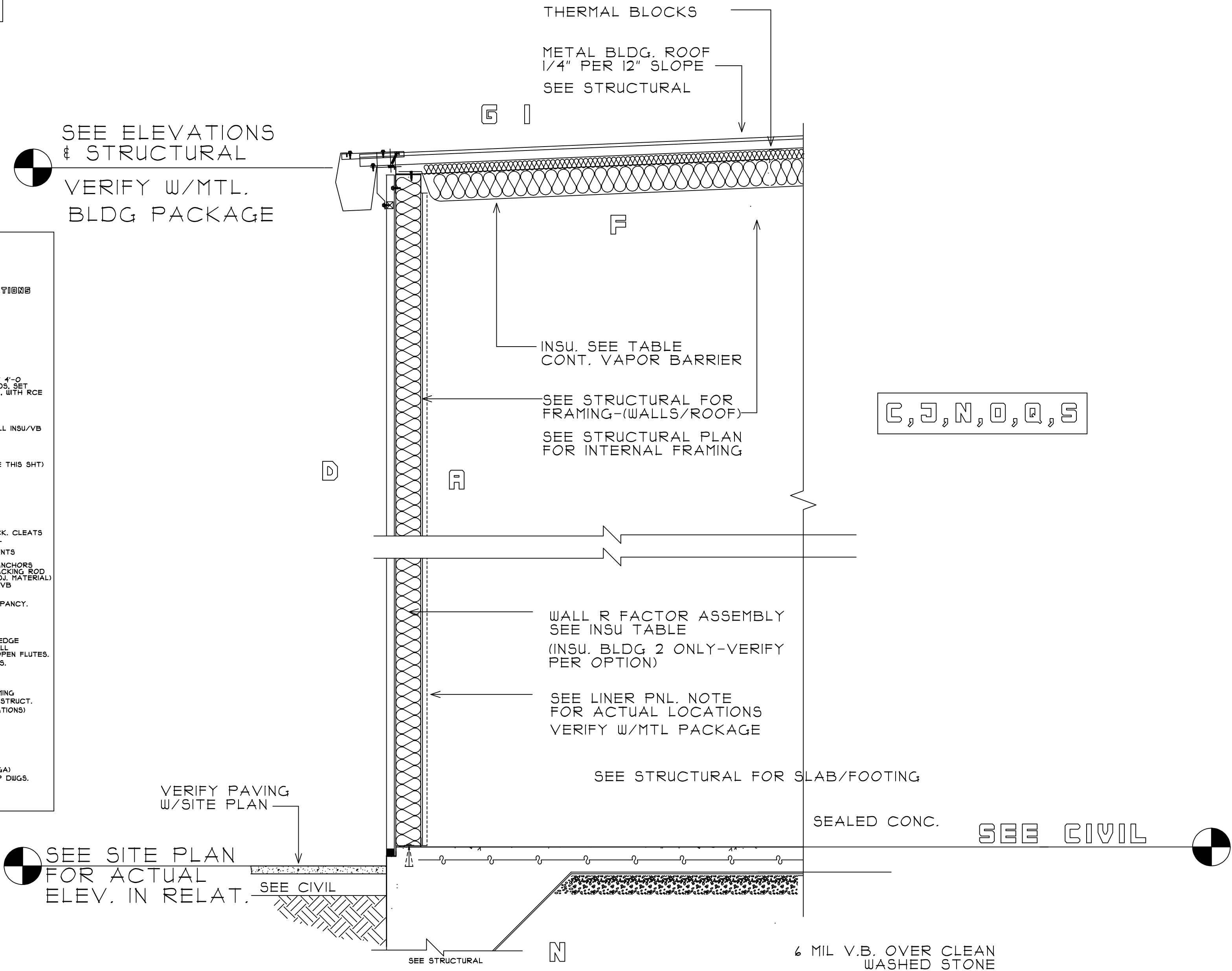
SEALS:



6/27/22

BUILDING SECTIONS

GCP	GCP	SHEET:
DESIGNED BY:	DRAWN BY:	A-3
GCP	GCP	
CHECKED BY:	APPROVED BY:	OF:
LAKESIDE	LAKESIDEANG	6/27/22
CAD FILE NAME:	PROJECT #	DATE:



- SECTION KEYS: ALL WALL SECTIONS**
- A SEE STRUCTURAL FOR STUDS, FND, WALLS, FTGS, STRUCTURAL COMPONENTS, FLOOR SYSTEMS, BEAMS/HEADERS/ANTELS
  - B CONT. PVC FLASHING TO PVC HEAD JT. WEEPS # 2'-0" O.C. HORIZ.
  - C ADA/ANSI THRESHOLD AT ALL MAN DOORS. AT 4'-0" LOADING DOORS 1/4" H. WITH RETURN CLOSED ENDS. SET IN FULL BED OF MASTIC. 3'-0" MAN DOORS 1/2" WITH RCE IN FULL MASTIC BED
  - D DENS GLASS GOLD SHEATHING. WATER PROOF. NOTE: OWNER MAY SUBSTITUTE UP BLDG WRAP
  - E FIBERGLASS BATT INSU. SEE SECTION KEY FOR ALL INSU/VB (INSULATION IS AN OPTION FOR S OCCUPANCY)
  - F ROOF INSU. THERMAL BLOCKS + CONT. VB. SEE GENERAL INSU KEY SECT. SHEETS FOR ALL VALUES. (SEE TABLE THIS SHT)
  - G METAL ROOFING + METAL SIDING. SEE STRUCT FOR TYP FLASHING DETAIL ASSEMBLY. NOTE: AT ALL INSTALL TO MEET MANUF. STANDARD SPECS/DETAILS
  - H SEE DOOR SCHEDULE FOR ALL DOOR TYPES
  - I PREMANUF MTL COPING, 24 GA. MIN. CONCEAL. LOCK. CLEATS. VERIFY PARAPET DEPTHS. PROVIDE KYNAR METAL COLOR SELECTION OR METAL ROOFING/SIDING COLOR STANDARDS + MANUF. TYP. TRIM COMPONENTS
  - J FLASH + WEEP ALL DOOR HEADS. INSTALL JAMB ANCHORS. ALL FRAMES SEAL WITH MIN. 2 PART SEALANT. BACKING ROD IF OVER 1/4" JT. COLOR TO MATCH SIDING OR ADJ. MATERIAL
  - K SLAB OVER CLEAN WASHED STONE + CONT. 6 MIL VB. SEE STRUCTURAL
  - L PERIMETER INSULATION IS AN OPTION FOR S OCCUPANCY. FOR TYP. FOOTINGS SEE STRUCTURAL
  - M DAMP PROOF ALL SHALLOW FND. FACES OF CONC. FOOTING NOT WATER PROOFED
  - N SEE FOUNDATION PLANS/DETAILS FOR RECESSED EDGE + SIDING AND OVERHEAD DOOR LOCATIONS. INSTALL MANUF. STANDARD CLOSURE COMPONENT AT ALL OPEN FLUTES.
  - O SEE PLAN AND ELEV. FOR GUTTER + DS LOCATIONS. COOR. WITH CIVIL
  - P PREFAB CANOPY + STRUTS W/CONNECTIONS INCL. D.S. VERIFY FIN. COLOR (SHOP DIAG REQ). COOR. W/STRUCTURAL ANY BLOCKING DURING FRAMING. DETAIL SHOWN TO COOR. W/SHOP DIAGS. VERIFY W/STRUCT.
  - Q SEE STRUCTURAL FOR WALL BLOCKING (SEE ELEVATIONS)
  - R SEE STRUCTURAL FOR ALL LINTEL/SUPPORT COMBO AT ENTRY + LOADING AREAS.
  - S SEE STRUCTURAL FOR BOX BEAM OR STEEL BEAM OPENINGS, DOORS + ROLL UPS.
  - T PACIA BREAK/METAL PREFINISHED KYNAR CONCEALED ROLLED JTS. MATCHING TRIM (MIN. 24 GA)
  - U SIDING TYPES/PROFILES TO BE VERIFIED ON SHOP DIAGS. VERIFY ALL COLORS.

1 SECTION REAR OF BLDG.  
A-3 DO NOT SCALE  
FRONT ELEVATION/HIGH EAVE SIMILAR. SEE BUILDING ELEV.

**INSULATION TABLE-ALL BLDGS.**

**STORAGE NON CONDITIONED:**  
ROOF- 2" INSULATION, INTEGRAL VAPOR BARRIER, THERMAL BLOCKS.  
WALLS- NO INSULATION WITH VAPOR BARRIER INSTALLED. OWNER OPTION- RII BATTs  
FOUNDATION- NO PERIMETER INSULATION. INSTALL 6 MIL V.B.

**STORAGE CONDITIONED:**  
ROOF- R30 (R19 + R11 LS (LINER SYSTEM USING R3 MIN. THERMAL BLOCKS))  
WALLS- R11 BATTs WITH VAPOR BARRIER  
FOUNDATION- R15 24" FLAT SLAB. TURN DN. \* LUG UNDER SLAB (VERIFY) W/6 MIL VB  
NOTE: \* BELOW GRADE CONDITION NO PERIMETER FOUNDATION REQ. WHERE 4'-0" OR MORE BELOW GRADE. VERIFY GRADES + FOUNDATION.

**FILES:**  
ROOF- R30 (R19 + R11 LS (LINER SYSTEM USING R3 MIN. THERMAL BLOCKS))  
WALLS- R13 + R15 CI (CONT. INSULATION) WITH VAPOR BARRIER ON OUTSIDE W/L.E.F.  
FOUNDATION- R15 24" FLAT SLAB. TURN DN \* LUG UNDER SLAB. SEE SECTIONS INSTALL 6 MIL VB.