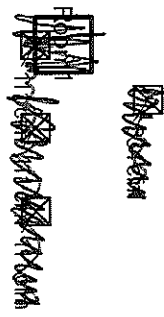




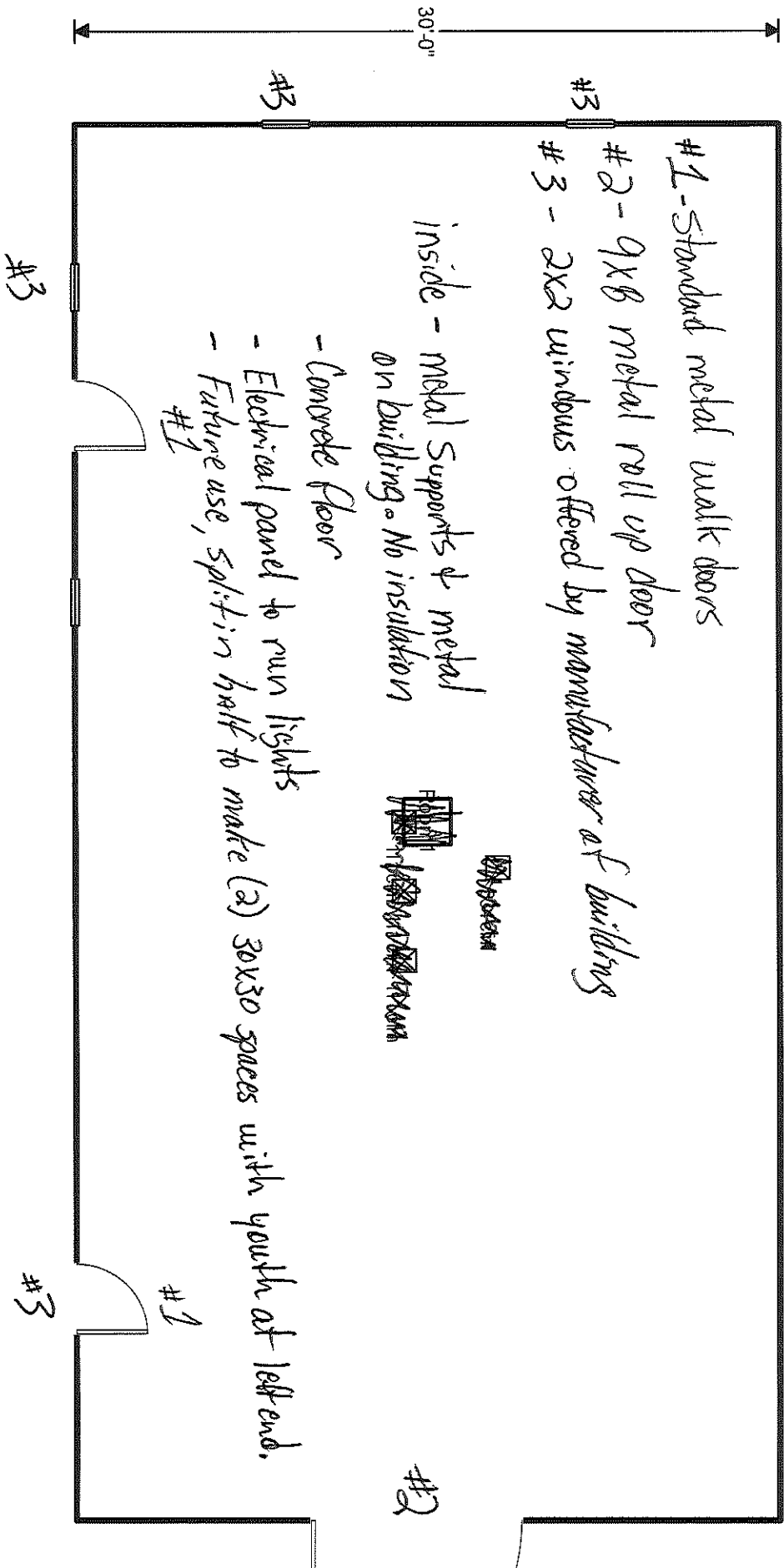
Sheet 1  
60'-0"

- #1 - Standard metal walk doors
- #2 - 9x8 metal roll up door
- #3 - 2x2 windows offered by manufacturer of building

inside - metal supports & metal on building. No insulation



- Concrete floor
- Electrical panel to run lights
- Future use, split in half to make (2) 30x30 spaces with youth at left end.



Job #:  
Performed for:  
Coats United Methodist Church  
208 South Street  
Coats, NC 27521

Scale: 1 : 82  
Page 1  
Rights: Suite@Universal 2022  
22.0.01 RSLU25557  
2022-Jul-01 10:32:41  
Project1.rup

