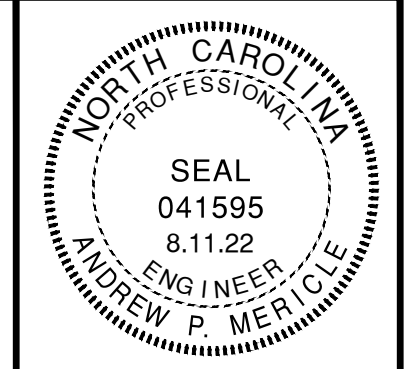


LEXINGTON PLANTATION POOL

HARNETT COUNTY, NORTH CAROLINA



Draper Aden Associates
Engineering • Surveying • Environmental Services

114 Edinburg South Drive, Suite 200
 Cary, NC 27511
 919-473-1060 Fax: 919-473-1074
 NC Firm License # F-1429

• Hampton Roads, VA
 • Fayetteville, NC
 • Northern Virginia
 • Virginia Beach, VA
 • Richmond, VA
 • Blacksburg, VA
 • Charlottesville, VA

PARCEL DATA
 OWNER/DEVELOPER: VOLA, LLC
 PO BOX 1328
 CARY, NC 27512

ZONING: RA-20R
SETBACKS:

30' - FRONT SETBACK - IF STREET R/W IS 60' OR MORE
 35' - FRONT SETBACK - IF STREET R/W IS LESS THAN 60'
 25' - REAR SETBACK
 20' - CORNER SETBACK
 10' /5' SIDE SETBACK

PIN: 9594-09-9184

DEED REFERENCE: BOOK 2948, PAGE 429

FLOOD PLAIN INFO:
 ZONE: X
 MAP NUMBER: 3710958400J
 EFFECTIVE DATE: OCT 3, 2006
 PARCEL AREA: 3.61 ACRES
 LAND USE CLASS: COMPACT MIXED USE/LDR

PARKING: 44 STANDARD & 4 HANDICAP = 48 TOTAL
SWIMMING: 1/15 sf OF POOL, 1200SF - 80 SWIMMERS MAX
EST. WATER/SEWER USAGE: 10 GAL/DAY/SWIMMER - 800 GAL/DAY

- NOTES:**
- PARKING AREAS, DRIVE AISLES, ACCESS ROADS WILL HAVE AN ASPHALT OR CONCRETE SURFACE.
 - PARKING AREAS AND DRIVE AISLES ARE REQUIRED TO BE SCREENED/LANDSCAPED.
 - PROPOSED DISTURBED AREA IS UNDER ONE ACRE - NO EROSION CONTROL PLAN IS REQUIRED PER NCDEQ
 - PROPERTY OWNER IS TO BE RESPONSIBLE FOR MAINTAINING PARKING AREAS, LANDSCAPING AND ALL OTHER SITE APURTENANCES
 - THIS DEVELOPMENT IS WITHIN THE FIVE MILE MILITARY CORRIDOR OVERLAY ZONE, AND MAY BE SUBJECT TO MILITARY TRAINING ACTIVITIES.
 - OWNER SHALL BE RESPONSIBLE FOR MAINTENANCE OF THE PARKING AREAS, DRIVE AISLES, AND ALL LANDSCAPE BUFFERING.
 - LANDSCAPE BUFFERING SHALL BE IN ACCORDANCE WITH THE HARNETT COUNTY ZONING ORDINANCE.
 - PROJECT WILL BE SERVED BY HRW FOR WATER AND SEWER.
 - THE WATER AND SEWER TAPS WILL BE INSTALLED BY PRIVATE UTILITY CONTRACTOR.
 - PROPERTY IS NOT IN A WATERSHED DISTRICT.

BUFFER REQUIREMENTS
 ALL BUFFER TYPES SHALL INCLUDE:
 1. A STAGGERED ROW OF LARGE MATURING TREES SPACED NOT MORE THAN 30 FEET APART, AND
 2. LOW GROWING EVERGREEN SHRUBS, EVERGREEN GROUND COVER, OR MULCH COVERING THE BALANCE OF THE BUFFER AREA.

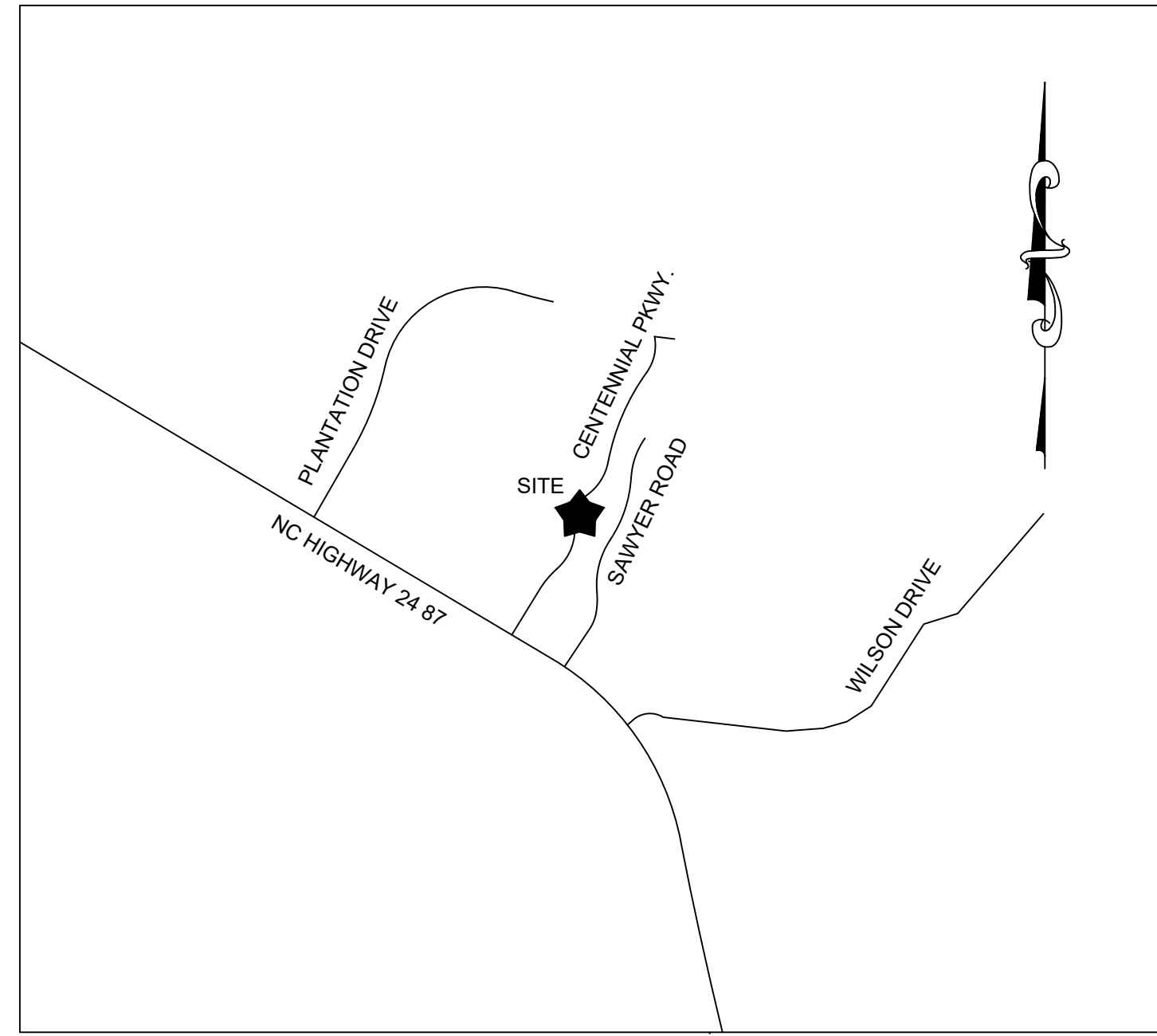
TYPE "A" - (MINIMUM WIDTH OF 15 FEET)
 OPTION 1: A ROW OF EVERGREEN SHRUBS PLACED NOT MORE THAN FOUR(4) TO SIX(6) FEET APART WHICH WILL GROW TO FORM A CONTINUOUS HEDGE OF AT LEAST SIX(6) FEET IN HEIGHT WITHIN TWO(2) YEARS OF PLANTING; OR

OPTION 2: A MASONRY WALL LOCATED WITHIN THE REQUIRED BUFFER AREA; SUCH WALL SHALL BE A MINIMUM HEIGHT OF SIX(B) FEET (ABOVE FINISHED GRADE); AND, IF A BLOCK WALL, IT SHALL BE PAINTED ON ALL SIDES; OR AN OPAQUE FENCE SIX(6) FEET IT HEIGHT.

OPTION 3: A BERM MEETING THE REQUIREMENTS OF HARNETT COUNTY UDO

TYPE "D" - (MINIMUM WIDTH OF 15 FEET)
 OPTION 1: A ROW OF EVERGREEN SHRUBS, 10 SHRUBS FOR EVERY REQUIRED LARGE MATURING TREE, PLACED NOT MORE FOUR(4) FEET APART WHICH WILL ROW TO FORM A CONTINUOUS HEDGE OF AT LEAST SIX (6) FEET IN HEIGHT WITHIN TWO(2) YEARS OF PLANTING; OR

OPTION 2: AN OPAQUE FENCE LOCATED WITHIN THE REQUIRED BUFFER AREA; SUCH FENCE SHALL BE A MINIMUM HEIGHT IF SIX(B) FEET IN HEIGHT.



VICINITY MAP
NOT TO SCALE

Sheet List Table	
Sheet Number	Sheet Title
C1.0	COVER
C2.0	GENERAL NOTES
C2.1	ESC NOTES
C2.2	HRW NOTES
C3.0	EXISTING CONDITIONS, DEMO, & ESC PLAN
C4.0	SITE & UTILITY PLAN
C5.0	GRADING PLAN
C6.0	ESC & SITE DETAILS
C7.0	HRW DETAILS

COVER
LEXINGTON PLANTATION POOL
 HARNETT COUNTY, NC

REVISIONS

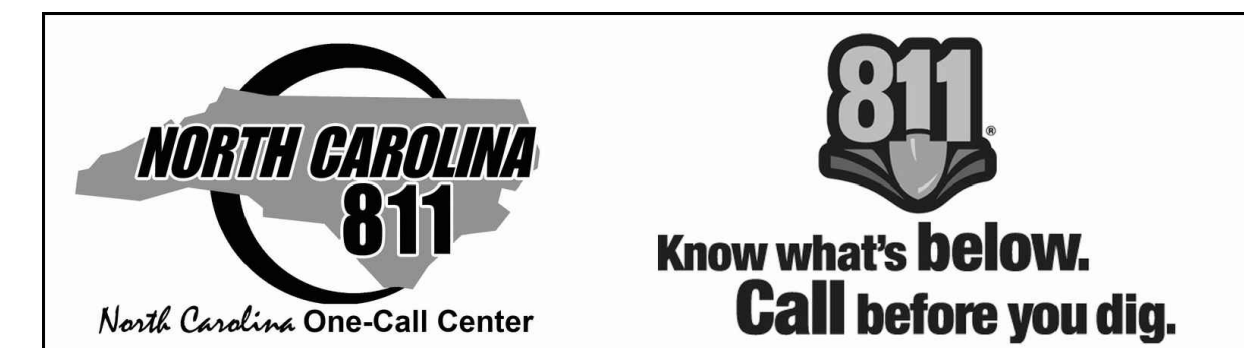
DESIGNED BY:
DRAWN BY:
CHECKED BY:
SCALE: NONE
DATE: 4.26.22
PROJECT NUMBER: 2101033-01

C1.0

DRAPER ADEN ASSOCIATES REVIEW

THESE PLANS HAVE BEEN SUBJECTED TO TECHNICAL AND QUALITY REVIEWS BY:

NAME: _____		01.??,2022
PROJECT DESIGNER	SIGNATURE	DATE
NAME: _____		01.??,2022
PROJECT MANAGER	SIGNATURE	DATE
NAME: _____		01.??,2022
QUALITY REVIEWER	SIGNATURE	DATE



AS THE OWNER OF RECORD, I HEREBY FORMALLY CONSENT TO THE PROPOSED DEVELOPMENT SHOWN ON THIS SITE PLAN AND ALL REGULATIONS AND REQUIREMENTS OF THE HARNETT COUNTY ORDINANCES

DATE _____ OWNER SIGNATURE _____

2019 HRW REQUIRED UTILITY NOTES

(REVISION 7 – NOVEMBER 2019)

THE FOLLOWING UTILITY NOTES SHOULD BE ADDED TO THE COVERSHEET OF UTILITY PLANS FOR PROJECTS LOCATED IN HARNETT COUNTY:

- A. THE FIRE MARSHAL'S OFFICE SHALL APPROVE ALL HYDRANT TYPES AND LOCATIONS IN NEW SUBDIVISIONS. HOWEVER, HARNETT REGIONAL WATER (HRW) PREFERS THE CONTRACTORS TO INSTALL ONE OF THE FOLLOWING FIRE HYDRANTS:
1. MUELLER - SUPER CENTURIUM 250 A-423 MODEL WITH A 5/2" MAIN VALVE OPENING THREE WAY (TWO HOSE NOZZLES AND ONE PUMPER NOZZLE);
2. AMERICAN DARLING - MARK B-84-B MODEL WITH A 5/2" MAIN VALVE OPENING THREE WAY (TWO HOSE NOZZLES AND ONE PUMPER NOZZLE);
3. WATEROUS - PACER B-67-250 MODEL WITH A 5/2" MAIN VALVE OPENING THREE WAY (TWO HOSE NOZZLES AND ONE PUMPER NOZZLE) OR APPROVED EQUAL FOR STANDARDIZATION.
B. FIRE HYDRANTS ARE INSTALLED AT CERTAIN ELEVATIONS, ANY GRADE CHANGE IN THE VICINITY OF ANY FIRE HYDRANT WHICH IMPEDES ITS OPERATION SHALL BECOME THE RESPONSIBILITY OF THE UTILITY CONTRACTOR FOR CORRECTION. CORRECTIONS WILL BE MONITORED BY THE HRW UTILITY CONSTRUCTION INSPECTOR AND THE HARNETT COUNTY FIRE MARSHAL.
C. THE PROFESSIONAL ENGINEER (PE) SHALL OBTAIN AND PROVIDE THE NCDCEQ "AUTHORIZATION TO CONSTRUCT" PERMIT TO THE UTILITY CONTRACTOR BEFORE THE CONSTRUCTION OF THE WATER LINE SHALL BEGIN. THE UTILITY CONTRACTOR MUST POST A COPY OF THE NCDCEQ "AUTHORIZATION TO CONSTRUCT" PERMIT ISSUED BY THE NORTH CAROLINA DEPARTMENT OF ENVIRONMENTAL QUALITY (NCDCEQ) ON SITE PRIOR TO THE START OF CONSTRUCTION. THE PERMIT MUST BE MAINTAINED ON SITE THROUGHOUT THE ENTIRE CONSTRUCTION PROCESS OF THE PROPOSED WATER LINES THAT WILL SERVE THIS PROJECT.
D. THE UTILITY CONTRACTOR SHALL NOTIFY HARNETT REGIONAL WATER (HRW) AND THE PROFESSIONAL ENGINEER (PE) AT LEAST TWO (2) DAYS PRIOR TO CONSTRUCTION COMMENCING. THE UTILITY CONTRACTOR MUST SCHEDULE A PRE-CONSTRUCTION CONFERENCE WITH MR. ALAN MOSS, HRW UTILITY CONSTRUCTION INSPECTOR AT LEAST TWO (2) DAYS BEFORE CONSTRUCTION WILL BEGIN AND THE UTILITY CONTRACTOR MUST COORDINATE WITH HRW FOR REGULAR INSPECTION VISITATIONS AND ACCEPTANCE OF THE WATER SYSTEM(S). CONSTRUCTION WORK SHALL BE PERFORMED ONLY DURING THE NORMAL WORKING HOURS OF HRW WHICH IS 8:00 AM - 5:00 PM MONDAY THROUGH FRIDAY. HOLIDAY AND WEEKEND WORK IS NOT PERMITTED BY HRW.
E. THE PROFESSIONAL ENGINEER (PE) SHALL PROVIDE HRW AND THE UTILITY CONTRACTOR WITH A SET OF NCDCEQ APPROVED PLANS MARKED "RELEASED FOR CONSTRUCTION" AT LEAST TWO (2) DAYS PRIOR TO CONSTRUCTION COMMENCING. THE REGISTERED LAND SURVEYOR (RLS) SHOULD STAKE OUT ALL LOT CORNERS AND THE GRADE STAKES FOR THE PROPOSED FINISH GRADE FOR EACH STREET BEFORE THE UTILITY CONTRACTOR BEGINS CONSTRUCTION OF THE WATER LINE(S). THE GRADE STAKES SHOULD BE SET WITH A CONSISTENT OFFSET FROM THE STREET CENTERLINE SO AS NOT TO INTERFERE WITH THE STREET GRADING AND UTILITY CONSTRUCTION.
F. THE UTILITY CONTRACTOR SHALL PROVIDE THE HRW UTILITY CONSTRUCTION INSPECTOR WITH MATERIAL SUBMITTALS AND SHOP DRAWINGS FOR ALL PROJECT MATERIALS PRIOR TO THE CONSTRUCTION OF ANY WATER LINE EXTENSION(S), AND ASSOCIATED WATER SERVICES IN HARNETT COUNTY. THE MATERIALS TO BE USED ON THE PROJECT MUST MEET THE ESTABLISHED SPECIFICATIONS OF HRW AND BE APPROVED BY THE ENGINEER OF RECORD PRIOR TO CONSTRUCTION. ALL SUBSTANDARD MATERIALS OR MATERIALS NOT APPROVED FOR USE IN HARNETT COUNTY FOUND ON THE PROJECT SITE MUST BE REMOVED IMMEDIATELY WHEN NOTIFIED BY THE HRW UTILITY CONSTRUCTION INSPECTOR.
G. THE WATER MAIN(S), FIRE HYDRANTS, SERVICE LINES, METER SETTERS AND ALL ASSOCIATED APPURTENANCES SHALL BE CONSTRUCTED IN STRICT IN ACCORDANCE WITH THE STANDARD SPECIFICATIONS OF THE HARNETT REGIONAL WATER (HRW). THE UTILITY CONTRACTOR SHALL BE RESPONSIBLE TO LOCATE THE NEWLY INSTALLED WATER MAIN(S), WATER SERVICE LINES AND ALL ASSOCIATED METER SETTERS AND METER BOXES FOR OTHER UTILITY COMPANIES AND THEIR CONTRACTORS UNTIL THE NEW WATER MAIN(S) HAVE BEEN APPROVED BY THE NORTH CAROLINA DEPARTMENT OF ENVIRONMENTAL QUALITY, DIVISION OF ENVIRONMENTAL HEALTH, PUBLIC WATER SUPPLY SECTION (NCDCEQ, DEH, PWS) AND ACCEPTED BY HRW.
H. PRIOR TO ACCEPTANCE, ALL SERVICES WILL BE INSPECTED TO INSURE THAT THEY ARE INSTALLED AT THE PROPER DEPTH. ALL METER BOXES MUST BE FLUSH WITH THE GROUND LEVEL AT FINISH GRADE AND THE METER SETTERS MUST BE A MINIMUM OF 8" BELOW THE METER BOX LID. METER SETTERS SHALL BE CENTERED IN THE METER BOX AND SUPPORTED BY BRICK, BLOCK OR STONE.
I. THE UTILITY CONTRACTOR SHALL PROVIDE THE PROFESSIONAL ENGINEER (PE) AND HRW UTILITY CONSTRUCTION INSPECTOR WITH A SET OF RED LINE DRAWINGS IDENTIFYING THE COMPLETE WATER SYSTEM INSTALLED FOR EACH PROJECT. THE RED LINE DRAWINGS SHOULD IDENTIFY THE MATERIALS, PIPE SIZES AND APPROXIMATE DEPTHS OF THE WATER LINES AS WELL AS THE GATE VALVES, FIRE HYDRANTS, METER SETTERS, METER BOXES AND ALL ASSOCIATED APPURTENANCES FOR ALL WATER LINE(S) CONSTRUCTED IN HARNETT COUNTY. THE RED LINE DRAWINGS SHOULD CLEARLY IDENTIFY ANY DEVIATIONS FROM THE NCDCEQ APPROVED PLANS. ALL CHANGE ORDERS MUST BE APPROVED BY HRW AND THE PROFESSIONAL ENGINEER (PE) IN WRITING AND PROPERLY DOCUMENTED IN THE RED LINE FIELD DRAWINGS.
J. POTABLE WATER MAINS CROSSING OTHER UTILITIES AND NON-POTABLE WATER LINES (SANITARY SEWER, STORM SEWER, RCP, ETC.) SHALL BE LAID TO PROVIDE A MINIMUM VERTICAL DISTANCE OF TWENTY-FOUR (24") INCHES BETWEEN THE POTABLE WATER MAIN AND ALL OTHER UTILITIES. NCDOT REQUIRES THE NEW WATER MAINS TO BE INSTALLED UNDER THE STORM WATER LINES. THE POTABLE WATER MAIN SHALL BE INSTALLED WITH TWENTY-FOUR (24") INCHES OF VERTICAL SEPARATION AND WITH DUCTILE IRON PIPE WHEN DESIGNED TO BE PLACED UNDER A NON-POTABLE WATER LINE SUCH AS SANITARY SEWER OR STORM SEWER LINES. IF THESE SEPARATIONS CANNOT BE MAINTAINED THEN THE WATER MAIN SHALL BE INSTALLED WITH DUCTILE IRON PIPE. BOTH THE POTABLE WATER MAIN AND THE NON-POTABLE WATER LINE MUST BE CAST IRON OR DUCTILE IRON PIPE (DIP) IF THE STATE MINIMUM SEPARATIONS CANNOT BE MAINTAINED. THE DUCTILE IRON PIPE MUST BE LAID SO THE MECHANICAL JOINTS ARE AT LEAST (10') FEET FROM THE POINT WHERE THE POTABLE WATER MAIN CROSSES THE NON-POTABLE WATER LINE.
K. POTABLE WATER MAINS INSTALLED PARALLEL TO NON-POTABLE WATER LINES (SANITARY SEWER, STORM SEWER, RCP, ETC.) SHALL BE LAID TO PROVIDE A MINIMUM HORIZONTAL DISTANCE OF TEN (10') FEET BETWEEN THE POTABLE WATER MAIN AND SANITARY SEWER MAINS, SEWER LATERALS AND SERVICES. THE HORIZONTAL SEPARATION BETWEEN THE POTABLE WATER MAIN AND ANY OTHER UTILITY OR STORM SEWER SHALL NOT BE LESS THAN FIVE (5) FEET. THE POTABLE WATER MAIN MUST BE DUCTILE IRON PIPE IF THIS HORIZONTAL SEPARATION OF TEN (10') FEET CANNOT BE MAINTAINED. THE DUCTILE IRON PIPE SHALL EXTEND AT LEAST TEN (10') FEET BEFORE THE POINT WHERE THE MINIMUM REQUIRED HORIZONTAL SEPARATION OF TEN (10') FEET CAN BE RE-ESTABLISHED.
L. METER SETTERS SHALL BE INSTALLED IN PAIRS ON EVERY OTHER LOT LINE WHERE POSSIBLE TO LEAVE ADEQUATE SPACE FOR OTHER UTILITIES TO BE INSTALLED AT A LATER TIME. THE METER SETTERS SHALL BE INSTALLED AT LEAST ONE (1) FOOT FROM THE RIGHT-OF-WAY AND AT LEAST THREE (3) TO FIVE (5) FEET FROM THE PROPERTY LINE BETWEEN THE LOTS.
M. HRW REQUIRES THAT METER BOXES FOR 3/4" SERVICES SHALL BE 12" WIDE X 17" LONG ABS PLASTIC BOXES AT LEAST 18" IN HEIGHT WITH CAST IRON LIDS/COVERS, METER BOXES FOR 1" SERVICES SHALL BE 17" WIDE X 21" LONG ABS PLASTIC BOXES AT LEAST 18" IN HEIGHT WITH PLASTIC LIDS AND CAST IRON FLIP COVERS IN THE CENTER OF THE LIDS. METER BOXES FOR 2" SERVICES SHALL BE 20" WIDE X 32" LONG ABS PLASTIC BOXES AT LEAST 20" IN HEIGHT WITH PLASTIC LIDS AND CAST IRON FLIP COVERS IN THE CENTER OF THE LIDS.
N. MASTER METERS MUST BE INSTALLED IN CONCRETE VAULTS SIZED FOR THE METER ASSEMBLY AND ASSOCIATED APPURTENANCES SO AS TO PROVIDE AT LEAST EIGHTEEN (18") INCHES OF CLEARANCE BETWEEN THE BOTTOM OF THE CONCRETE VAULT AND THE BOTTOM OF THE METER SETTER. THE MASTER METER MUST BE PROVIDED WITH THE METER SETTER AND NOT EQUIPPED WITH TEST PORTS FROM THE MANUFACTURER IN ACCORDANCE WITH THE HRW ESTABLISHED STANDARD SPECIFICATIONS AND DETAILS. DUCTILE IRON PIPE MUST BE USED

- FOR THE MASTER METER VAULT PIPING AND VALVE VAULT PIPING. THE UTILITY CONTRACTOR MUST PROVIDE SHOP DRAWINGS FOR THE METER VAULTS TO HRW PRIOR TO ORDERING THE CONCRETE VAULTS.
O. THE UTILITY CONTRACTOR WILL INSTALL POLYETHYLENE SDR-9 WATER SERVICE LINES THAT CROSS UNDER THE PAVEMENT INSIDE A SCHEDULE 40 PVC CONDUIT TO ALLOW FOR REMOVAL AND REPLACEMENT IN THE FUTURE. TWO (2) INDEPENDENT 1/2" WATER SERVICE LINES MAY BE INSTALLED INSIDE ONE (1) - TWO (2) INCH SCHEDULE 40 PVC CONDUIT OR TWO (2) INDEPENDENT 1" WATER SERVICE LINES MAY BE INSTALLED INSIDE ONE (1) - THREE (3) INCH SCHEDULE 40 PVC CONDUIT, BUT EACH WATER SERVICE SHALL BE TAPPED DIRECTLY TO THE WATER MAIN. SPLIT SERVICES ARE NOT ALLOWED BY HRW.
P. THE WATER MAIN(S), FIRE HYDRANTS, GATE VALVES, SERVICE LINES, METER SETTERS AND ASSOCIATED APPURTENANCES MUST BE RATED FOR 200 PSI AND HYDROSTATICALLY PRESSURE TESTED TO 200 PSI. THE HYDROSTATIC PRESSURE TEST(S) MUST BE WITNESSED BY THE HRW UTILITY CONSTRUCTION INSPECTOR. THE UTILITY CONTRACTOR MUST NOTIFY HRW WHEN THEY ARE READY TO BEGIN FILLING IN LINES AND COORDINATE WITH HARNETT REGIONAL WATER TO WITNESS ALL PRESSURE TESTING.
Q. THE UTILITY CONTRACTOR SHALL CONDUCT A PNEUMATIC PRESSURE TEST USING COMPRESSED AIR OR OTHER INERT GAS ON THE STAINLESS STEEL TAPPING SLEEVE(S) PRIOR TO MAKING THE TAP ON THE EXISTING WATER MAIN. THIS PNEUMATIC PRESSURE TEST MUST BE WITNESSED BY THE HRW UTILITY CONSTRUCTION INSPECTOR. THE UTILITY CONTRACTOR SHALL USE ROMAC BRAND STAINLESS STEEL TAPPING SLEEVES(S) APPROVED EQUAL FOR ALL TAPS MADE IN HARNETT COUNTY. ALL NEW WATER LINE EXTENSIONS MUST BEGIN WITH A RESILIENT WEDGE TYPE GATE VALVE SIZED EQUAL TO THE DIAMETER OF THE NEW WATER LINE EXTENSION IN ORDER TO PROVIDE A MEANS OF ISOLATION BETWEEN HARNETT REGIONAL WATER'S EXISTING WATER MAINS AND THE NEW WATER LINE EXTENSIONS UNDER CONSTRUCTION.
R. ALL WATER MAINS WILL BE CONSTRUCTED WITH SDR-21 PVC PIPE OR CLASS 50 DUCTILE IRON PIPE RATED FOR AT LEAST 200 PSI OR GREATER. ALL PIPES MUST BE PROTECTED DURING LOADING, TRANSPORT, UNLOADING, STAGING, AND INSTALLATION. PVC PIPE MUST BE PROTECTED FROM EXTENDED EXPOSURE TO SUNLIGHT PRIOR TO INSTALLATION.
S. ALL WATER MAINS WILL BE FLUSHED AND DISINFECTED IN STRICT ACCORDANCE WITH THE STANDARD SPECIFICATIONS OF THE HARNETT REGIONAL WATER. ALL WATER SAMPLES COLLECTED FOR BACTERIA TESTING WILL BE COLLECTED BY THE HRW UTILITY CONSTRUCTION INSPECTOR AND TESTED IN THE HRW LABORATORY.
T. ALL FITTINGS LARGER THAN TWO (2)" INCHES DIAMETER SHALL BE DUCTILE IRON. HRW REQUIRES THAT MECHANICAL JOINTS BE ASSEMBLED WITH GRIP RINGS AS "MEGALUG" FITTINGS ARE NOT APPROVED BY HARNETT REGIONAL WATER FOR PIPE SIZES SMALLER THAN TWELVE INCHES (12") DIAMETER. PVC PIPE USED FOR WATER MAINS SHALL BE CONNECTED BY SLIP JOINT OR MECHANICAL JOINT WITH GRIP RINGS. GLUED PIPE JOINTS ARE NOT ALLOWED ON PVC PIPE USED FOR WATER MAINS IN HARNETT COUNTY.
U. HRW REQUIRES THAT THE UTILITY CONTRACTOR INSTALL TRACER WIRE IN THE TRENCH WITH ALL WATER LINES. THE TRACER WIRE SHALL BE 12 GA. INSULATED, SLOTTED COPPER CONDUCTOR AND IT SHALL BE TERMINATED AT THE TOP OF THE VALVE BOXES OR MANHOLES. SPLICED WIRE CONNECTIONS SHALL BE MADE UNDERGROUND ON TRACER WIRE INSTALLED IN HARNETT COUNTY. THE TRACER WIRE MAY BE SECURED WITH DUCT TAPE TO THE TOP OF THE PIPE BEFORE BACKFILLING.
V. THE UTILITY CONTRACTOR WILL PROVIDE PROFESSIONAL ENGINEER (PE) AND THE HRW UTILITY CONSTRUCTION INSPECTOR WITH A SET OF RED LINE FIELD DRAWINGS TO IDENTIFY THE INSTALLED LOCATIONS OF THE WATER LINE(S) AND ALL ASSOCIATED SERVICES. ALL CHANGE ORDERS MUST BE PRE-APPROVED BY HRW AND THE PROFESSIONAL ENGINEER (PE) IN WRITING AND PROPERLY DOCUMENTED IN THE RED LINE FIELD DRAWINGS.
W. THE UTILITY CONTRACTOR SHALL SPOT DIG TO EXPOSE EACH UTILITY PIPE OR LINE WHICH MAY CONFLICT WITH CONSTRUCTION OF PROPOSED WATER LINE EXTENSIONS WELL IN ADVANCE TO THE UTILITY CONTRACTOR'S BEGINNING OF UTILITIES. THE UTILITY CONTRACTOR SHALL PROVIDE BOTH HORIZONTAL AND VERTICAL CLEARANCES TO THE PROFESSIONAL ENGINEER (PE) TO ALLOW THE PE TO ADJUST THE WATER LINE DESIGN IN ORDER TO AVOID CONFLICTS WITH EXISTING UNDERGROUND UTILITIES. THE UTILITY CONTRACTOR SHALL COORDINATE WITH THE UTILITY OWNER AND BE RESPONSIBLE FOR TEMPORARY RELOCATION AND/OR SECURING EXISTING UTILITY POLES, PIPES, WIRES, CABLES, SIGNS AND/OR UTILITIES INCLUDING SERVICES IN ACCORDANCE WITH THE UTILITY OWNER REQUIREMENTS DURING WATER LINE INSTALLATION, GRADING AND STREET CONSTRUCTION.
X. PRIOR TO THE COMMENCEMENT OF ANY WORK WITHIN ESTABLISHED UTILITY EASEMENTS OR NCDOT RIGHT-OF-WAYS THE UTILITY CONTRACTOR IS REQUIRED TO HAVE A SIGNED NCDOT ENCROACHMENT AGREEMENT POSTED ON SITE AND NOTIFY ALL CONCERNED UTILITY COMPANIES IN ACCORDANCE WITH G.S. 87-102. THE UTILITY CONTRACTOR MUST CALL THE NC ONE CALL CENTER AT 811 OR (800) 632-4949 TO VERIFY THE LOCATION OF EXISTING UTILITIES PRIOR TO THE BEGINNING OF CONSTRUCTION. EXISTING UTILITIES SHOWN IN THESE PLANS ARE TAKEN FROM MAPS FURNISHED BY VARIOUS UTILITY COMPANIES AND HAVE NOT BEEN PHYSICALLY LOCATED OR VERIFIED BY THE P.E. (I.E. TELEPHONE, CABLE, WATER, SEWER, ELECTRICAL POWER, FIBER OPTIC, NATURAL GAS, ETC.). THE UTILITY CONTRACTOR WILL BE RESPONSIBLE TO REPAIR ANY AND ALL DAMAGES TO THE SATISFACTION OF THE RELATED UTILITY COMPANY.
Y. THE UTILITY CONTRACTOR SHALL PROVIDE HRW WITH AT LEAST ONE (1) FIRE HYDRANT WRENCH AND ONE (1) BREAK-AWAY FLANGE KIT FOR EVERY SUBDIVISION WITH FIRE HYDRANTS DEVELOPED IN HARNETT COUNTY. THESE ITEMS MUST BE PROVIDED TO HRW BEFORE THE FINAL INSPECTION WILL BE SCHEDULED BY THE HRW UTILITY CONSTRUCTION INSPECTOR. IN ADDITION, THE UTILITY CONTRACTOR SHALL INSTALL A 4" X 4" CONCRETE VALVE MARKER AT THE EDGE OF THE RIGHT-OF-WAY TO IDENTIFY THE LOCATION OF EACH GATE VALVE INSTALLED IN THE NEW WATER SYSTEM WITH THE EXCEPTION OF THE FIRE HYDRANT ISOLATION VALVES. THE CONTRACTOR SHALL MEASURE THE DISTANCE FROM THE CENTER OF THE CONCRETE MARKER TO THE CENTER OF THE VALVE BOX. THIS DISTANCE (IN LINEAR FEET) SHALL BE STAMPED ON THE BRASS PLATE LOCATED ON THE TOP OF THE CONCRETE VALVE MARKER. IN LIEU OF INSTALLING THE CONCRETE VALVE MARKERS, THE UTILITY CONTRACTOR MAY PROVIDE AT LEAST TWO MEASUREMENTS FROM TWO INDEPENDENT PERMANENT ABOVE GROUND STRUCTURES TO THE PROFESSIONAL ENGINEER (PE) IN THE RED LINE DRAWINGS TO IDENTIFY THE VALVE LOCATIONS. THE PROFESSIONAL ENGINEER (PE) MUST INCLUDE THESE MEASUREMENTS IN THE AS-BUILT RECORD DRAWINGS SUBMITTED TO HRW.
Z. THE UTILITY CONTRACTOR WILL BE RESPONSIBLE FOR ANY AND ALL REPAIRS DUE TO LEAKAGE DAMAGE FROM POOR WORKMANSHIP DURING THE ONE (1) YEAR WARRANTY PERIOD ONCE THE WATER SYSTEM IMPROVEMENTS HAVE BEEN ACCEPTED BY HARNETT REGIONAL WATER. HARNETT REGIONAL WATER WILL PROVIDE MAINTENANCE AND REPAIRS WHEN REQUIRED AND BILL THE UTILITY CONTRACTOR. CLOSED CIRCUIT VIDEO CAMERA INSPECTIONS (AT THE DEVELOPER AND/OR UTILITY CONTRACTOR IF NECESSARY DUE TO LACK OF RESPONSE WITHIN 48 HOURS OF NOTIFICATION OF WARRANTY WORK, THE UTILITY CONTRACTOR WILL BE RESPONSIBLE FOR ANY AND ALL REPAIRS DUE TO DAMAGES RESULTING FROM FAILURE TO LOCATE THE NEW WATER LINES AND ASSOCIATED APPURTENANCES FOR OTHER UTILITIES AND THEIR CONTRACTORS UNTIL THE WATER LINES HAVE BEEN APPROVED BY NCDCEQ AND ACCEPTED BY HRW. THE FINAL INSPECTION OF WATER SYSTEM IMPROVEMENTS CANNOT BE SCHEDULED WITH HRW UNTIL THE STREETS HAVE BEEN PAVED; THE RIGHTS-OF-WAY AND UTILITY EASEMENTS HAVE BEEN SEEDED AND STABILIZED WITH AN ADEQUATE STAND OF GRASS IN PLACE TO PREVENT EROSION ISSUES ON SITE.
AA. THE ENGINEER OF RECORD IS RESPONSIBLE TO INSURE THAT CONSTRUCTION IS, AT ALL TIMES, IN COMPLIANCE WITH ACCEPTED SANITARY ENGINEERING PRACTICES AND APPROVED PLANS AND SPECIFICATIONS. NO FIELD CHANGES TO THE APPROVED PLANS ARE ALLOWED WITHOUT PRIOR WRITTEN APPROVAL BY HRW. A COPY OF EACH ENGINEER'S FIELD REPORT IS TO BE SUBMITTED TO HRW AS EACH SUCH INSPECTION IS MADE ON SYSTEM IMPROVEMENTS OR TESTING IS PERFORMED BY THE CONTRACTOR. WATER AND SEWER INFRASTRUCTURE MUST PASS ALL TESTS REQUIRED BY HRW SPECIFICATIONS AND THOSE OF ALL APPLICABLE REGULATORY AGENCIES. THESE TESTS INCLUDE, BUT ARE NOT LIMITED TO: AIR TEST, VACUUM TEST, MANDREL TEST, VISUAL TEST, PRESSURE TEST, BACTERIOLOGICAL TEST, ETC. A HRW INSPECTOR MUST BE PRESENT DURING TESTING AND ALL TEST RESULTS SHALL BE SUBMITTED TO HRW. ALL TESTS MUST BE SATISFIED BEFORE THE FINAL INSPECTION WILL BE SCHEDULED

- WITH THE HRW INSPECTOR. THE ENGINEER OF RECORD MUST REQUEST IN WRITING TO SCHEDULE THE FINAL INSPECTION ONCE ALL CONSTRUCTION IS COMPLETE. THE DEVELOPER'S ENGINEER OF RECORD AND THE HRW UTILITY CONSTRUCTION INSPECTOR SHALL PREPARE A WRITTEN PUNCH LIST OF ANY DEFECTS OR DEFICIENCIES NOTED DURING THE FINAL INSPECTION, SHOULD ANY EXIST. UPON COMPLETION OF THE PUNCH LIST, THE DEVELOPER'S ENGINEER OF RECORD WILL SCHEDULE ANOTHER INSPECTION. IN THE EVENT THE NUMBER OF INSPECTIONS PERFORMED BY THE HRW EXCEEDS TWO, ADDITIONAL FEES MAY BE ACCESSED TO THE DEVELOPER.
SANITARY SEWER
A. THE PROFESSIONAL ENGINEER (PE) SHALL OBTAIN AND SUPPLY A COPY OF THE SEWER PERMIT FOR THE CONSTRUCTION AND OPERATION OF THE WASTEWATER COLLECTION SYSTEM TO THE UTILITY CONTRACTOR BEFORE THE CONSTRUCTION OF THE SANITARY SEWER LINE, SEWER LIFT STATION AND ASSOCIATED FORCE MAIN SHALL BEGIN. THE UTILITY CONTRACTOR MUST POST A COPY OF THE SEWER PERMIT ISSUED BY THE NORTH CAROLINA DEPARTMENT OF ENVIRONMENTAL QUALITY (NCDCEQ) ON SITE PRIOR TO THE START OF CONSTRUCTION. THE PERMIT MUST BE MAINTAINED ON SITE DURING THE CONSTRUCTION OF THE SEWER SYSTEM IMPROVEMENTS.
B. THE UTILITY CONTRACTOR SHALL NOTIFY HARNETT REGIONAL WATER (HRW) AND THE PROFESSIONAL ENGINEER (PE) AT LEAST TWO (2) DAYS PRIOR TO CONSTRUCTION COMMENCING. THE UTILITY CONTRACTOR MUST SCHEDULE A PRE-CONSTRUCTION CONFERENCE WITH MR. ALAN MOSS, HRW UTILITY CONSTRUCTION INSPECTOR AT LEAST TWO (2) DAYS BEFORE CONSTRUCTION WILL BEGIN AND THE UTILITY CONTRACTOR MUST COORDINATE WITH HRW FOR REGULAR INSPECTION VISITATIONS AND ACCEPTANCE OF THE WASTEWATER SYSTEM(S). CONSTRUCTION WORK SHALL BE PERFORMED ONLY DURING THE NORMAL WORKING HOURS OF HRW WHICH IS 8:00 AM - 5:00 PM MONDAY THROUGH FRIDAY. HOLIDAY AND WEEKEND WORK IS NOT PERMITTED BY HRW.
C. THE PROFESSIONAL ENGINEER (PE) SHALL PROVIDE HRW WITH A SET OF NCDCEQ APPROVED PLANS MARKED "RELEASED FOR CONSTRUCTION" AT LEAST TWO (2) DAYS PRIOR TO CONSTRUCTION COMMENCING. HRW WILL STAMP THE APPROVED PLANS AS "RELEASED FOR CONSTRUCTION" AND PROVIDE COPIES TO THE UTILITY CONTRACTOR. THE REGISTERED LAND SURVEYOR (RLS) SHALL STAKE OUT ALL LOT CORNERS AND ESTABLISH GRADE STAKES FOR THE PROPOSED FINISH GRADE FOR EACH STREET AND SEWER LINE BEFORE THE UTILITY CONTRACTOR BEGINS CONSTRUCTION OR INSTALLATION OF THE MANHOLES, SANITARY SEWER GRAVITY LINE(S), SEWER LIFT STATIONS AND/OR SANITARY SEWER FORCE MAIN(S). THE GRADE STAKES SHOULD BE SET WITH A CONSISTENT OFFSET FROM THE STREET CENTERLINE SO AS NOT TO INTERFERE WITH THE STREET GRADING OR UTILITY CONSTRUCTION.
D. THE UTILITY CONTRACTOR SHALL PROVIDE THE HRW UTILITY CONSTRUCTION INSPECTOR WITH MATERIAL SUBMITTALS AND SHOP DRAWINGS FOR ALL PROJECT MATERIALS PRIOR TO THE CONSTRUCTION OF ANY GRAVITY SEWER LINE(S), MANHOLE(S), SEWER LIFT STATION(S) AND ASSOCIATED FORCE MAIN(S) IN HARNETT COUNTY. THE MATERIALS TO BE USED ON THE PROJECT MUST MEET THE STANDARD SPECIFICATIONS OF HRW AND BE APPROVED BY THE ENGINEER OF RECORD PRIOR TO CONSTRUCTION. ALL SUBSTANDARD MATERIALS OR MATERIALS NOT APPROVED FOR USE IN HARNETT COUNTY FOUND ON THE PROJECT SITE MUST BE REMOVED IMMEDIATELY WHEN NOTIFIED BY THE HRW UTILITY CONSTRUCTION INSPECTOR.
E. THE SANITARY SEWER LATERAL CONNECTIONS SHOULD BE INSTALLED 90° (PERPENDICULAR) TO THE SANITARY SEWER GRAVITY LINES WITH SCHEDULE 40 PVC PIPE. HRW REQUIRES THE UTILITY CONTRACTOR TO PROVIDE THE PROFESSIONAL ENGINEER (PE) WITH ACCURATE MEASUREMENTS FOR LOCATING SANITARY SEWER SERVICE LATERAL AND ASSOCIATED EACH SANITARY SEWER CLEAN-OUT. THESE MEASUREMENTS SHOULD BE TAKEN FROM THE NEAREST DOWNSTREAM MANHOLE UP ALONG THE SANITARY SEWER MAIN TO THE IN-LINE WYE FITTING OR TAPPING SADDLE AND THEN ANOTHER MEASUREMENT FROM THE IN-LINE WYE FITTING (OR TAPPING SADDLE) TO THE 4" X 4" LONG SWEEP COMBINATION WYE FITTING AT THE BOTTOM OF THE SEWER CLEAN-OUT STACK. THESE FIELD MEASUREMENTS MUST BE PROVIDED TO THE PROFESSIONAL ENGINEER (PE) IN THE RED LINE DRAWINGS FROM THE UTILITY CONTRACTOR FOR PROPER DOCUMENTATION IN THE AS-BUILT RECORD DRAWINGS SUBMITTED TO HRW.
F. THE UTILITY CONTRACTOR SHALL BE RESPONSIBLE TO LOCATE THE NEWLY INSTALLED SANITARY SEWER GRAVITY LINE(S), SANITARY SEWER FORCE MAIN(S), SANITARY SEWER SERVICE LATERAL(S) AND ALL ASSOCIATED SEWER CLEAN-OUT(S) IN THE PROPOSED SANITARY SEWER SYSTEM FOR OTHER UTILITY COMPANIES AND THEIR CONTRACTORS UNTIL THE NEW SANITARY SEWER LINE(S) AND ASSOCIATED APPURTENANCES HAVE BEEN APPROVED BY THE NORTH CAROLINA DEPARTMENT OF ENVIRONMENTAL QUALITY (NCDCEQ) AND ACCEPTED BY HRW. ALL NEW SANITARY SEWER LINES MUST HAVE AT LEAST THREE (3 FT.) FEET OF COVER AND EXTEND UNDER ALL EXISTING WATER MAIN AND STORM WATER LINES WITH A LEAST 24" OF VERTICAL CLEARANCE BELOW THE BOTTOM OF THE EXISTING WATER MAIN AND STORM WATER LINES.
G. THE SANITARY SEWER GRAVITY LINE(S), MANHOLE(S), SANITARY SEWER SERVICE LATERAL(S) AND ASSOCIATED CLEAN-OUT(S) SHALL BE CONSTRUCTED IN STRICT ACCORDANCE WITH THE STANDARD SPECIFICATIONS OF THE HARNETT REGIONAL WATER. THE SANITARY SEWER GRAVITY LINE(S) MUST PNEUMATICALLY PRESSURE TESTED WITH COMPRESSED AIR AT 5 PSI AND THE SANITARY SEWER FORCE MAIN(S) MUST HYDROSTATICALLY PRESSURE TESTED WITH WATER OR AIR AT 200 PSI. SANITARY SEWER MANHOLES MUST BE VACUUM TESTED TO 10 INCHES OF MERCURY AND CANNOT DROP BELOW 9 INCHES IN 60 SECONDS FOR 4 FT. DIAMETER MANHOLES, 75 SECONDS FOR 5 FT. DIAMETER MANHOLES. ALL TESTS MENTIONED ABOVE MUST BE WITNESSED BY THE HRW UTILITY CONSTRUCTION INSPECTOR AND ENGINEER.
H. PRIOR TO ACCEPTANCE, ALL SEWER SERVICE LATERALS WILL BE INSPECTED TO INSURE THAT THEY ARE INSTALLED AT THE PROPER DEPTH. ALL SEWER CLEAN-OUTS MUST BE INSTALLED SO THE 4" X 4" LONG SWEEP COMBINATION WYE IS AT LEAST THREE (3) FEET BUT NO MORE THAN FOUR (4) FEET BELOW THE FINISH GRADE UNLESS OTHERWISE APPROVED BY HRW. THE SEWER CLEAN-OUTS SHALL HAVE A FOUR (4") SCHEDULED 40 PVC PIPE STUBBED UP FROM BOTH ENDS OF THE 4" X 4" LONG SWEEP COMBINATION WYE TO BE AT LEAST TWO (2) FEET ABOVE THE FINISH GRADE AND COVER EACH END WITH A FOUR (4") INCH TEMPORARY CAP TO KEEP OUT DIRT, SAND, ROCKS, WATER AND CONSTRUCTION DEBRIS. THE VERTICAL STACK ON EACH CLEAN-OUT MUST BE PROVIDED WITH A CONCRETE DONUT FOR PROTECTION.
I. ONCE THE SANITARY SEWER GRAVITY LINE(S) HAVE BEEN INSTALLED, PNEUMATICALLY PRESSURE TESTED AND IN PLACE FOR AT LEAST 30 DAYS, THE UTILITY CONTRACTOR MUST CONTACT THE HRW UTILITY CONSTRUCTION INSPECTOR TO WITNESS THE MANDREL TEST ON EACH PVC SANITARY SEWER GRAVITY LINE. THE UTILITY CONTRACTOR WILL NOTIFY HRW TO SCHEDULE THE MANDREL TESTING. THE MANDREL AND PROPPING RING MUST BE PROVIDED BY THE UTILITY CONTRACTOR. CLOSED CIRCUIT VIDEO CAMERA INSPECTIONS (AT THE UTILITY CONTRACTOR'S EXPENSE) MAY BE REQUIRED BY THE HRW UTILITY CONSTRUCTION INSPECTOR IF THE MANDREL AND MIRROR TAPPING TESTING CANNOT BE COMPLETED WITH SATISFACTORY RESULTS. THE SANITARY SEWER LINES SHOULD BE FLUSHED CLEAN USING A SEWER BALL OF THE PROPER DIAMETER BEFORE ANY MANDREL TESTING CAN BE PERFORMED. THE UTILITY CONTRACTOR IS RESPONSIBLE TO REMOVE ALL DIRT, SAND, SILT, GRAVEL, MUD AND DEBRIS FROM THE NEWLY CONSTRUCTED SEWER LINES EXERCISING CARE TO KEEP THE HARNETT REGIONAL WATER'S EXISTING SANITARY SEWER SYSTEMS CLEAN. SANITARY SEWER FORCE MAIN(S) SHALL BE PRESSURE TESTED TO 200 PSI FOR AT LEAST 2 HOURS LIKE WATER LINES.
J. THE UTILITY CONTRACTOR SHALL BE RESPONSIBLE TO LOCATE THE NEWLY INSTALLED SANITARY SEWER SYSTEM(S) FOR OTHER UTILITY COMPANIES AND THEIR CONTRACTORS UNTIL THE NEW SANITARY SEWER SYSTEM(S) HAVE BEEN APPROVED BY THE NORTH CAROLINA DEPARTMENT OF ENVIRONMENTAL QUALITY (NCDCEQ) AND ACCEPTED BY HRW.
K. HRW REQUIRES THAT THE UTILITY CONTRACTOR INSTALL TRACER WIRE IN THE TRENCH WITH ALL SANITARY SEWER FORCE MAINS. THE TRACER WIRE SHALL BE 12 GA. INSULATED, SLOTTED COPPER CONDUCTOR AND IT SHALL BE TERMINATED AT THE TOP OF THE VALVE BOXES OR MANHOLES. NO SPLICED WIRE CONNECTIONS SHALL BE MADE UNDERGROUND ON TRACER WIRE INSTALLED IN HARNETT COUNTY. THE TRACER WIRE MAY BE SECURED WITH DUCT TAPE TO THE TOP OF THE PIPE BEFORE BACKFILLING. THE TRACER WIRE IS NOT REQUIRED FOR THE GRAVITY SEWER LINE(S) BETWEEN MANHOLES.

- L. THE UTILITY CONTRACTOR SHALL PROVIDE THE PROFESSIONAL ENGINEER (PE) AND HRW UTILITY CONSTRUCTION INSPECTOR WITH A SET OF RED LINE DRAWINGS IDENTIFYING THE COMPLETE SEWER SYSTEM INSTALLED FOR EACH PROJECT. THE RED LINE DRAWINGS SHOULD IDENTIFY THE MATERIALS, PIPE SIZES AND APPROXIMATE DEPTHS OF THE SEWER LINES AS WELL AS THE INSTALLED LOCATIONS OF THE MANHOLE(S), SANITARY SEWER GRAVITY LINE(S), SANITARY SEWER SERVICE LATERALS, CLEAN-OUTS, SEWER LIFT STATION(S) AND ASSOCIATED FORCE MAIN(S). THE RED LINE DRAWINGS SHOULD CLEARLY IDENTIFY ANY DEVIATIONS FROM THE NCDCEQ APPROVED PLANS. ALL CHANGE ORDERS MUST BE APPROVED BY HRW AND THE PROFESSIONAL ENGINEER (PE) IN WRITING AND PROPERLY DOCUMENTED IN THE RED LINE FIELD DRAWINGS PRIOR TO THE COMMENCEMENT OF ANY WORK WITHIN ESTABLISHED UTILITY EASEMENTS OR NCDOT RIGHT-OF-WAYS THE UTILITY CONTRACTOR IS REQUIRED TO NOTIFY ALL CONCERNED UTILITY COMPANIES IN ACCORDANCE WITH G.S. 87-102. THE UTILITY CONTRACTOR MUST CALL THE NC ONE CALL CENTER AT 811 OR (800) 632-4949 TO VERIFY THE LOCATION OF EXISTING UTILITIES PRIOR TO THE BEGINNING OF CONSTRUCTION. EXISTING UTILITIES SHOWN IN THESE PLANS ARE TAKEN FROM MAPS FURNISHED BY VARIOUS UTILITY COMPANIES AND HAVE NOT BEEN PHYSICALLY LOCATED BY THE P.E. (I.E. TELEPHONE, CABLE, WATER, SEWER, ELECTRICAL POWER, FIBER OPTIC, NATURAL GAS, ETC.).
N. THE UTILITY CONTRACTOR SHALL SPOT DIG TO EXPOSE EACH EXISTING UTILITY PIPE OR LINE WHICH MAY CONFLICT WITH CONSTRUCTION OF PROPOSED SANITARY SEWER LINE EXTENSIONS WELL IN ADVANCE TO VERIFY LOCATIONS OF THE EXISTING UTILITIES. THE UTILITY CONTRACTOR SHALL PROVIDE BOTH HORIZONTAL AND VERTICAL CLEARANCES TO THE PROFESSIONAL ENGINEER (PE) TO ALLOW THE PE TO ADJUST THE SANITARY SEWER LINE DESIGN IN ORDER TO AVOID CONFLICTS WITH EXISTING UNDERGROUND UTILITIES. THE UTILITY CONTRACTOR SHALL COORDINATE WITH THE UTILITY OWNER AND BE RESPONSIBLE FOR TEMPORARY RELOCATION OF EXISTING UTILITIES AND/OR SECURING EXISTING UTILITY POLES, PIPES, WIRES, CABLES, SIGNS AND/OR UTILITIES INCLUDING SERVICES IN ACCORDANCE WITH THE UTILITY OWNER'S REQUIREMENTS DURING SANITARY SEWER LINE INSTALLATION, GRADING AND STREET CONSTRUCTION.
O. WHEN MAKING A TAP ON AN EXISTING SEWER FORCE MAIN, THE UTILITY CONTRACTOR MUST HAVE A PERMIT FROM THE NORTH CAROLINA DEPARTMENT OF ENVIRONMENTAL QUALITY (NCDCEQ) PRIOR TO BEGIN THE TAP WORK. THE UTILITY CONTRACTOR SHALL CONDUCT A PNEUMATIC PRESSURE TEST USING COMPRESSED AIR OR OTHER INERT GAS ON THE STAINLESS STEEL TAPPING SLEEVE AND GATE VALVE PRIOR TO MAKING THE TAP ON AN EXISTING SANITARY SEWER FORCE MAIN. THIS PNEUMATIC PRESSURE TEST MUST BE WITNESSED BY THE HRW UTILITY CONSTRUCTION INSPECTOR. THE UTILITY CONTRACTOR SHALL USE ROMAC BRAND STAINLESS STEEL TAPPING SLEEVE(S) OR APPROVED EQUAL FOR ALL TAPS MADE ON SANITARY SEWER FORCE MAINS IN HARNETT COUNTY. THE UTILITY CONTRACTOR SHALL USE ROMAC BRAND STYLE "CB" SEWER SADDLES WITH STAINLESS STEEL BANDS OR APPROVED EQUAL FOR ALL TAPS MADE ON EXISTING SANITARY SEWER GRAVITY LINES IN HARNETT COUNTY.
P. THE UTILITY CONTRACTOR SHALL PROVIDE A GREASE TRAP FOR EACH SANITARY SEWER SERVICE LATERAL THAT WILL BE CONNECTED TO A RESTAURANT, FOOD PROCESSING FACILITY AND ANY OTHER COMMERCIAL OR INDUSTRIAL FACILITY AS REQUIRED BY THE HARNETT COUNTY FAT, OIL & GREASE ORDINANCE. THE GREASE TRAP MUST BE RATED FOR A MINIMUM CAPACITY OF AT LEAST 1,000 GALLONS UNLESS OTHERWISE APPROVED IN WRITING BY THE HRW PRE-TREATMENT COORDINATOR. GARBAGE DISPOSALS SHOULD NOT BE INSTALLED IN HOMES AND BUSINESSES THAT DISCHARGE WASTEWATER TO THE HARNETT REGIONAL WATER'S SANITARY SEWER SYSTEM AS THEY ARE NOT APPROVED BY HRW.
Q. EACH SEWER LIFT STATION MUST BE PROVIDED WITH THREE PHASE POWER (AT LEAST 480 VOLTS) AND CONSTRUCTED TO MEET THE MINIMUM REQUIREMENTS OF THE LATEST VERSION OF THE NATIONAL ELECTRICAL CODE (NEC) AND HARNETT REGIONAL WATER STANDARD SPECIFICATIONS AND DETAILS. IF THREE PHASE POWER IS NOT AVAILABLE FROM THE POWER COMPANY OTHER ARRANGEMENTS MUST BE APPROVED BY HRW ENGINEERING PRIOR TO THE START OF CONSTRUCTION.
R. WHERE A NEW SANITARY SEWER FORCE MAIN IS CONNECTED TO AN EXISTING MANHOLE IN THE HARNETT REGIONAL WATER SEWER COLLECTIONS SYSTEM, THE UTILITY CONTRACTOR MUST PROVIDE A PROTECTIVE COATING (COAL TAR EPOXY) FOR THE INTERIOR SURFACES OF THE MANHOLE TO PROTECT IT AGAINST CORROSION, EROSION AND DETERIORATION FROM THE RELEASE OF SEWER GASES SUCH AS METHANE AND HYDROGEN SULFIDE.
S. THE SEWER LIFT STATION DESIGN AND ASSOCIATED EQUIPMENT MUST MEET OR EXCEED THE MINIMUM REQUIREMENTS FOR HARNETT COUNTY SEWER LIFT STATIONS 2009 EDITION. EACH SANITARY SEWER LIFT STATION MUST BE CONSTRUCTED WITH AN ALL-WEATHER ACCESS ROAD THAT IS AT LEAST 20 FEET WIDE. THE LIFT STATION SITE MUST BE COVERED WITH WEED BLOCKING MATERIAL AND AT LEAST SIX (6") INCHES OF # 57 STONE (CRUSH AND RUN).
T. ONCE A SEWER LIFT STATION HAS BEEN INSTALLED, THE UTILITY CONTRACTOR IS RESPONSIBLE TO SCHEDULE A DRAW DOWN TEST WITH HRW ENGINEERING AND COLLECTIONS STAFF, THE PROFESSIONAL ENGINEER (PE), THE ELECTRICIAN, THE ORIGINAL EQUIPMENT MANUFACTURER'S (OEM) REPRESENTATIVES [FOR BOTH THE PUMPS AND THE GENERATOR], THIS DRAW DOWN TEST MUST BE COMPLETED WITH POWER SUPPLIED FROM THE ELECTRICAL UTILITY COMPANY AND WITH POWER SUPPLIED BY THE EMERGENCY GENERATOR WITH SATISFACTORY RESULTS BEFORE FINAL INSPECTIONS ARE CONDUCTED BY THE HRW UTILITY CONSTRUCTION INSPECTOR.
U. ONCE THE UTILITY CONTRACTOR COMPLETES THE INSTALLATION OF A SEWER LIFT STATION, THE PROFESSIONAL ENGINEER (PE) MUST SUBMIT THE SEWER PERMIT CERTIFICATION AND AS-BUILT RECORD DRAWINGS TO THE NORTH CAROLINA DEPARTMENT OF ENVIRONMENTAL QUALITY (NCDCEQ) AND HRW FOR FINAL APPROVAL. THE UTILITY CONTRACTOR MUST SUPPLY HRW ENGINEERING STAFF WITH THREE ORIGINAL OPERATION & MAINTENANCE (O&M) MANUALS ALONG WITH THE ASSOCIATED PUMP CURVES AND ELECTRICAL SCHEMATICS FOR THE ASSOCIATED SEWER LIFT STATION EQUIPMENT INCLUDING ALL WARRANTY INFORMATION AND DOCUMENTATION.

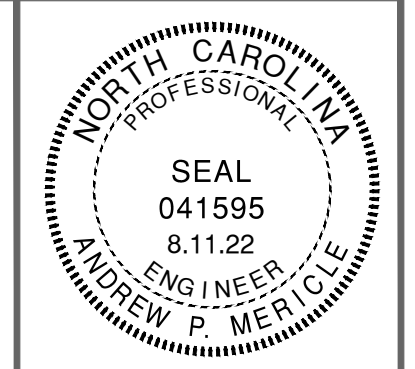
- V. ONCE THE UTILITY CONTRACTOR COMPLETES THE INSTALLATION OF A SEWER LIFT STATION, THE DEVELOPER MUST PAY HRW THE ESTABLISHED SYSTEM CONTROL AND DATA ACQUISITION (SCADA) FEES BEFORE THE SCADA SYSTEM WILL BE INSTALLED AT THE NEW SEWER LIFT STATION. THE SCADA SYSTEM MUST BE INSTALLED AND OPERATIONAL BEFORE THE UTILITIES MAY BE ACCEPTED BY HRW AND PLACED INTO OPERATION.
W. HRW REQUIRES THE UTILITY CONTRACTOR TO PROVIDE ALL NECESSARY EQUIPMENT AND DEVICES FOR THE TESTING AND INSPECTION OF THE SANITARY SEWER SYSTEM. THE EQUIPMENT AND DEVICES MAY INCLUDE BUT NOT LIMITED TO LAMPING WITH MIRRORS, MANDRELS, SEWER BALLS, PLUGS, AIR COMPRESSORS AND ASSOCIATED COMPRESSED AIR LINES. IF THE HRW UTILITY CONSTRUCTION INSPECTOR DEEMS THAT A CLOSED CIRCUIT VIDEO CAMERA INSPECTION OF THE NEWLY CONSTRUCTED SEWER SYSTEM IS NECESSARY, THEN ALL COSTS FOR THE CLOSED CIRCUIT CAMERA INSPECTION WILL BE THE RESPONSIBILITY OF THE UTILITY CONTRACTOR. ALL CLOSED CIRCUIT VIDEO CAMERA INSPECTIONS MUST BE RECORDED ON VHS TAPES THAT WILL BE RELEASED TO HRW FOR RECORD KEEPING, REVIEW AND APPROVAL OF THE SEWER SYSTEM.
X. ANY USE OF SEWER PLUGS TO TEMPORARILY BLOCK HARNETT REGIONAL WATER'S EXISTING SANITARY SEWER LINES MUST BE COORDINATED WITH THE HRW COLLECTIONS SUPERVISOR AT LEAST TWO (2) DAYS IN ADVANCE OF INSTALLING THE PLUGS. THE SEWER PLUGS MUST BE REMOVED AS SOON AS POSSIBLE ONCE THE NEW SANITARY SEWER LINES HAVE BEEN INSPECTED, PRESSURE TESTED, MANDREL TESTED, APPROVED BY THE NORTH CAROLINA DEPARTMENT OF ENVIRONMENTAL QUALITY (NCDCEQ) AND ACCEPTED BY HRW TO ALLOW THE SEWER TO FLOW AS DESIGNED IN HARNETT REGIONAL WATER'S EXISTING SANITARY SEWER LINES OR WHEN SO ORDERED BY THE HRW COLLECTIONS SUPERVISOR TO LIMIT INTERRUPTIONS TO THE NORMAL FLOW OF THE SANITARY SEWER COLLECTION SYSTEM(S). THE UTILITY CONTRACTOR MUST PROVIDE THE PUMPS HOSES AND NECESSARY CONNECTORS FOR A TEMPORARY PUMP AROUND SETUP IF REQUIRED BY THE HRW COLLECTIONS SUPERVISOR. MR. RANDOLPH CLEGG, HRW COLLECTIONS SUPERVISOR MAY BE CONTACTED BETWEEN 8:00 AM AND 5:00 PM MONDAY THROUGH FRIDAY AT (910) 893-7575 EXTENSION 3241.
Y. THE UTILITY CONTRACTOR WILL BE RESPONSIBLE FOR ANY AND ALL REPAIRS DUE TO LEAKAGE OR DAMAGE RESULTING FROM POOR WORKMANSHIP DURING THE ONE (1) YEAR WARRANTY PERIOD ONCE THE SEWER SYSTEM IMPROVEMENTS HAVE BEEN APPROVED BY THE NORTH CAROLINA DEPARTMENT OF ENVIRONMENTAL QUALITY (NCDCEQ) AND ACCEPTED BY HRW. THE UTILITY CONTRACTOR WILL BE RESPONSIBLE FOR ANY AND ALL REPAIRS DUE TO DAMAGES RESULTING FROM FAILURE TO LOCATE THE NEW SANITARY SEWER LINES AND ASSOCIATED APPURTENANCES FOR OTHER UTILITIES AND THEIR CONTRACTORS UNTIL THE SANITARY SEWER LINES HAVE BEEN APPROVED BY NCDCEQ AND ACCEPTED BY HRW. HRW WILL PROVIDE MAINTENANCE AND WARRANTY REPAIRS IF NECESSARY DUE TO LACK OF RESPONSE WITHIN 48 HOURS OF NOTIFICATION OF WARRANTY WORK. HRW WILL INVOICE THE DEVELOPER AND/OR UTILITY CONTRACTOR FOR MATERIALS AND LABOR IN SUCH CASES.
Z. IN DEVELOPMENTS AND PROJECTS THAT REQUIRE UTILITY EASEMENTS TO BE ESTABLISHED FOR FUTURE HRW RIGHT-OF-WAY, THE REGISTERED LAND SURVEYOR (RLS) MUST PROVIDE THE HRW RIGHT-OF-WAY AGENT WITH AN OFFICIAL COPY OF THE RECORDED PLAT AND LEGAL DESCRIPTION OF THE SAID EASEMENT AS RECORDED WITH THE HARNETT COUNTY REGISTER OF DEEDS. THE RECORDED DOCUMENTS MUST BE PROVIDED TO THE HRW RIGHT-OF-WAY AGENT BEFORE THE UTILITY IMPROVEMENTS WITHIN THE SAID EASEMENT CAN BE PLACED INTO OPERATION. ANY AND ALL EASEMENTS THAT MUST BE OBTAINED FROM ADJOINING PROPERTY OWNERS MUST BE PROVIDED TO HRW BY THE DEVELOPER AT NO COST TO HARNETT COUNTY. THE FINAL INSPECTION OF ALL SANITARY SEWER SYSTEM IMPROVEMENTS CANNOT BE SCHEDULED WITH HRW UNTIL THE STREETS HAVE BEEN PAVED; THE RIGHTS-OF-WAY AND UTILITY EASEMENTS HAVE BEEN SEEDED AND STABILIZED WITH AN ADEQUATE STAND OF GRASS IN PLACE TO PREVENT EROSION ISSUES ON SITE.
AA. THE ENGINEER OF RECORD IS RESPONSIBLE TO INSURE THAT CONSTRUCTION IS, AT ALL TIMES, IN COMPLIANCE WITH ACCEPTED SANITARY ENGINEERING PRACTICES AND APPROVED PLANS AND SPECIFICATIONS. NO FIELD CHANGES TO THE APPROVED PLANS ARE ALLOWED WITHOUT PRIOR WRITTEN APPROVAL BY HRW. A COPY OF EACH ENGINEER'S FIELD REPORT IS TO BE SUBMITTED TO HRW AS EACH SUCH INSPECTION IS MADE ON SYSTEM IMPROVEMENTS OR TESTING IS PERFORMED BY THE CONTRACTOR. WATER AND SEWER INFRASTRUCTURE MUST PASS ALL TESTS REQUIRED BY HRW SPECIFICATIONS AND THOSE OF ALL APPLICABLE REGULATORY AGENCIES. THESE TESTS INCLUDE, BUT ARE NOT LIMITED TO: AIR TEST, VACUUM TEST, MANDREL TEST, VISUAL TEST, PRESSURE TEST, BACTERIOLOGICAL TEST, ETC. A HRW INSPECTOR MUST BE PRESENT DURING TESTING AND ALL TEST RESULTS SHALL BE SUBMITTED TO HRW. ALL TESTS MUST BE SATISFIED BEFORE THE FINAL INSPECTION WILL BE SCHEDULED WITH THE HRW INSPECTOR. THE ENGINEER OF RECORD MUST REQUEST IN WRITING TO SCHEDULE THE FINAL INSPECTION ONCE ALL CONSTRUCTION IS COMPLETE. THE DEVELOPER'S ENGINEER OF RECORD AND THE HRW UTILITY CONSTRUCTION INSPECTOR SHALL PREPARE A WRITTEN PUNCH LIST OF ANY DEFECTS OR DEFICIENCIES NOTED DURING THE FINAL INSPECTION, SHOULD ANY EXIST. UPON COMPLETION OF THE PUNCH LIST, THE DEVELOPER'S ENGINEER OF RECORD WILL SCHEDULE ANOTHER INSPECTION. IN THE EVENT THE NUMBER OF INSPECTIONS PERFORMED BY THE HRW EXCEEDS TWO, ADDITIONAL FEES MAY BE ACCESSED TO THE DEVELOPER.



Draper Aden Associates
Engineering • Surveying • Environmental Services
114 Edinburgh South Drive, Suite 200
Raleigh, NC 27611
919-873-1070
NC Firm License # F-1429

HRW NOTES
LEXINGTON PLANTATION POOL
HARNETT COUNTY, NC

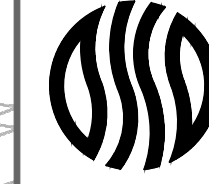
Table with 2 columns: Field Name and Value. Fields include DESIGNED BY, DRAWN BY, CHECKED BY, SCALE (NONE), DATE (4.26.22), PROJECT NUMBER (2101033-01), and C2.2.



Draper Aden Associates
 Engineering • Surveying • Environmental Services

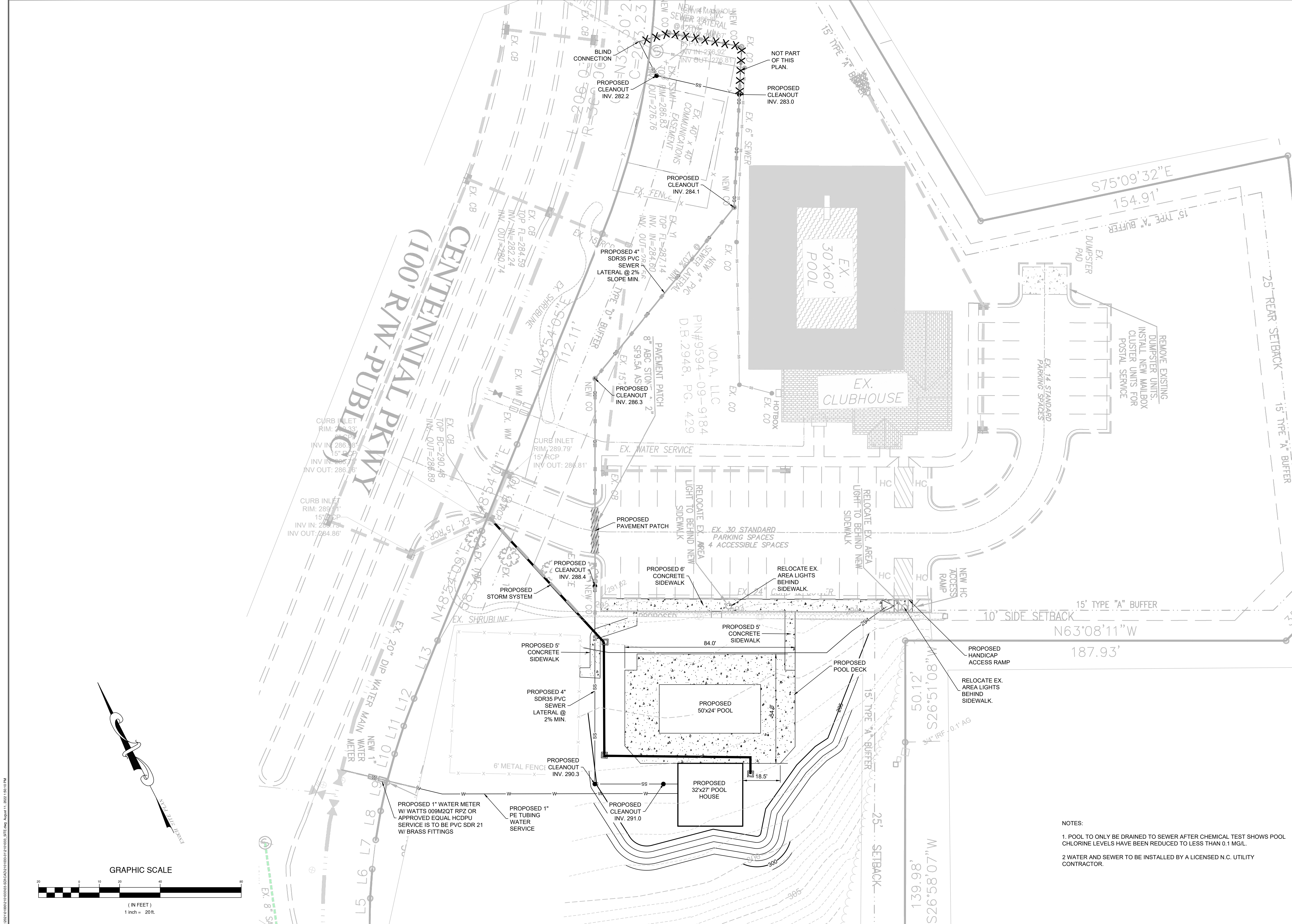
114 Edinburg South Drive, Suite 200
 Cary, NC 27511
 919-475-1060 Fax: 919-475-1074
 NC Firm License # F-1429

- Hampton Roads, VA
- Fayetteville, NC
- Northern Virginia
- Virginia Beach, VA
- Richmond, VA
- Blacksburg, VA
- Charlottesville, VA



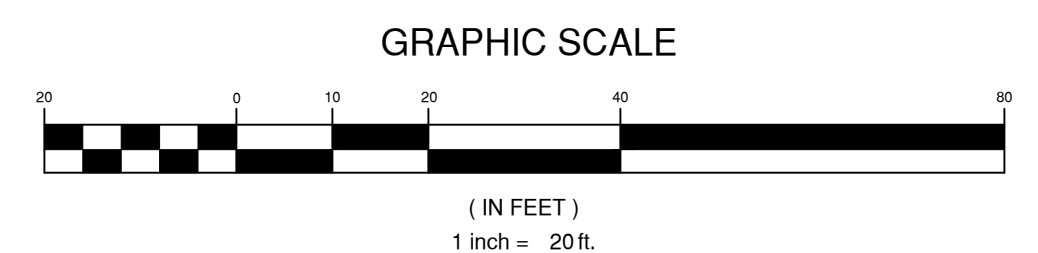
SITE & UTILITY PLAN
LEXINGTON PLANTATION POOL
 HARNETT COUNTY, NC

REVISIONS	
DESIGNED BY:	APM
DRAWN BY:	APM
CHECKED BY:	APM
SCALE:	1" = 20'
DATE:	4.26.22
PROJECT NUMBER:	2101033-01
C4.0	

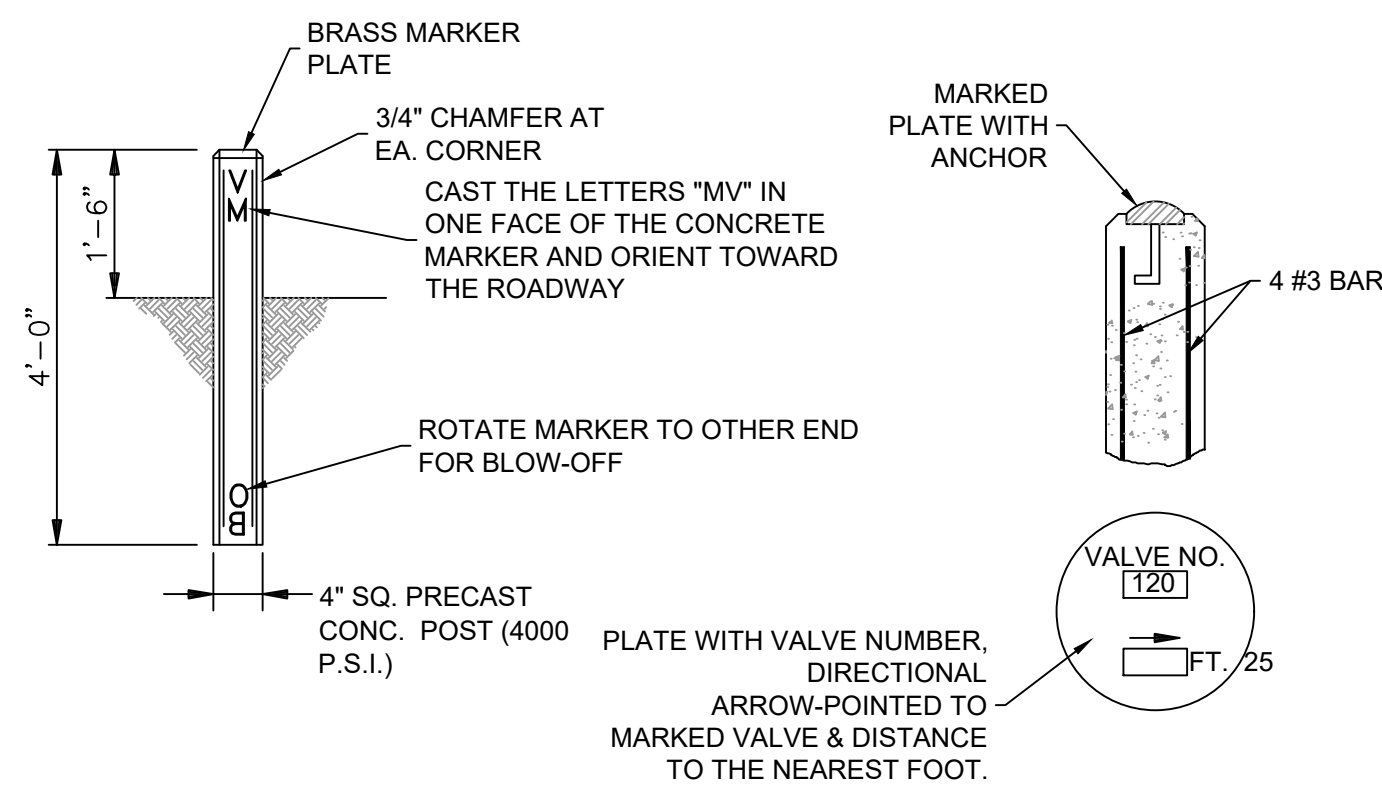


NOTES:

1. POOL TO ONLY BE DRAINED TO SEWER AFTER CHEMICAL TEST SHOWS POOL CHLORINE LEVELS HAVE BEEN REDUCED TO LESS THAN 0.1 MG/L.
2. WATER AND SEWER TO BE INSTALLED BY A LICENSED N.C. UTILITY CONTRACTOR.

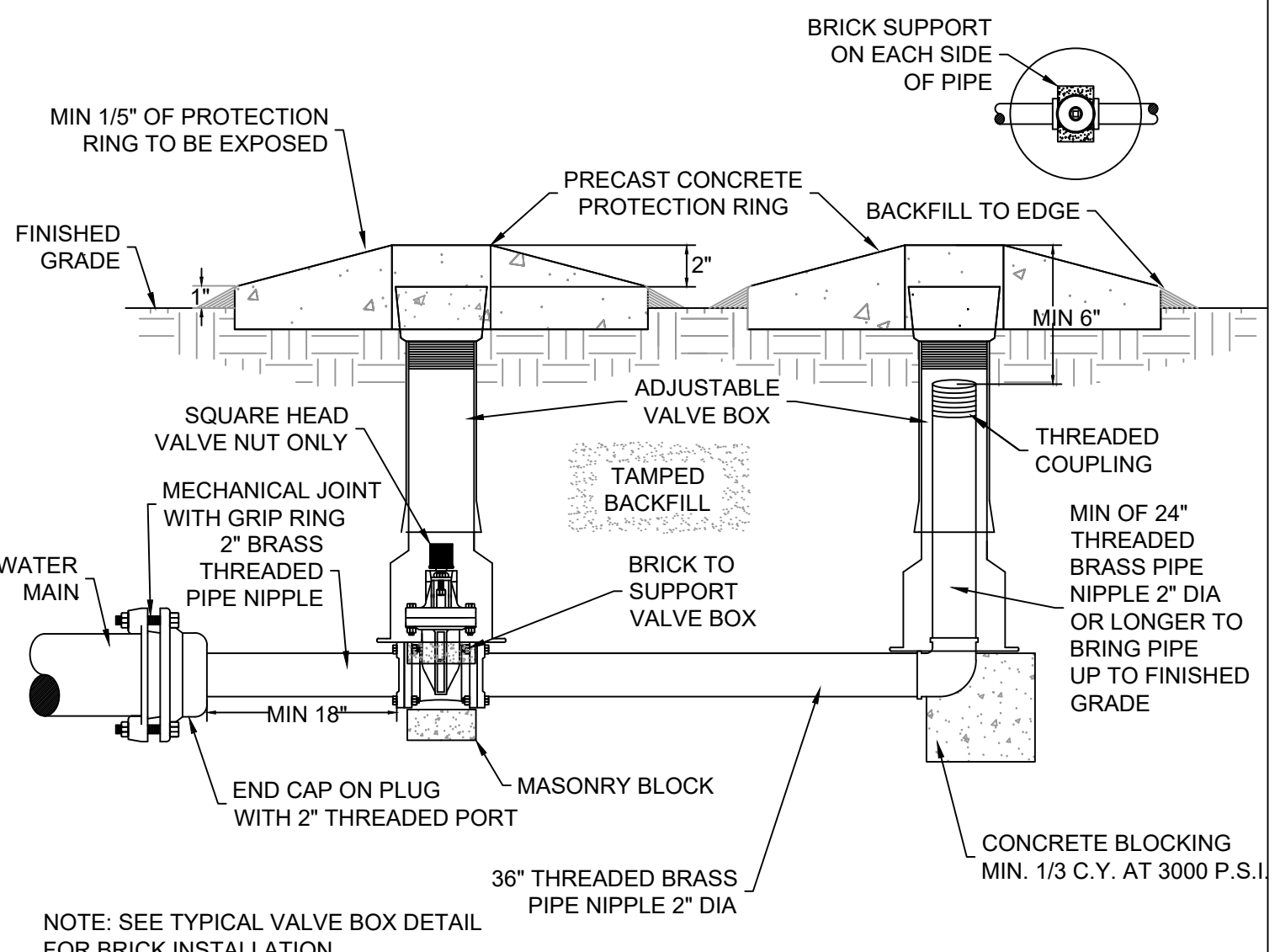


©2022 BY DRAPER ADEN ASSOCIATES, INC. ALL RIGHTS RESERVED. DATE: August 11, 2022 1:56:10 PM



NOTES: PAINT MARKER BLUE AFTER INSTALLATION

TYPICAL VALVE MARKER DETAIL W 1



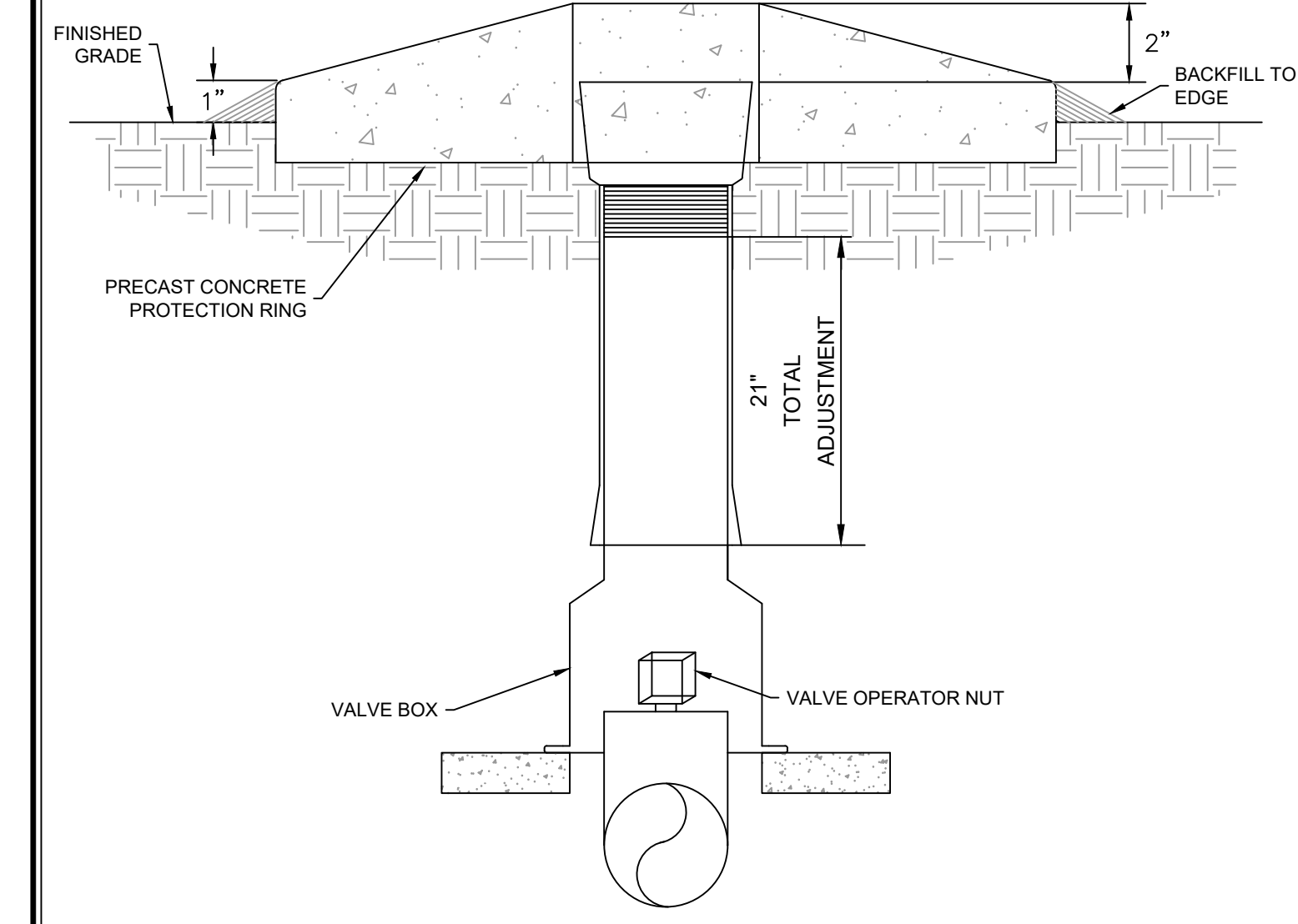
NOTE: SEE TYPICAL VALVE BOX DETAIL FOR BRICK INSTALLATION

TYPICAL PERMANENT BLOW-OFF ASSEMBLY DETAIL W 4

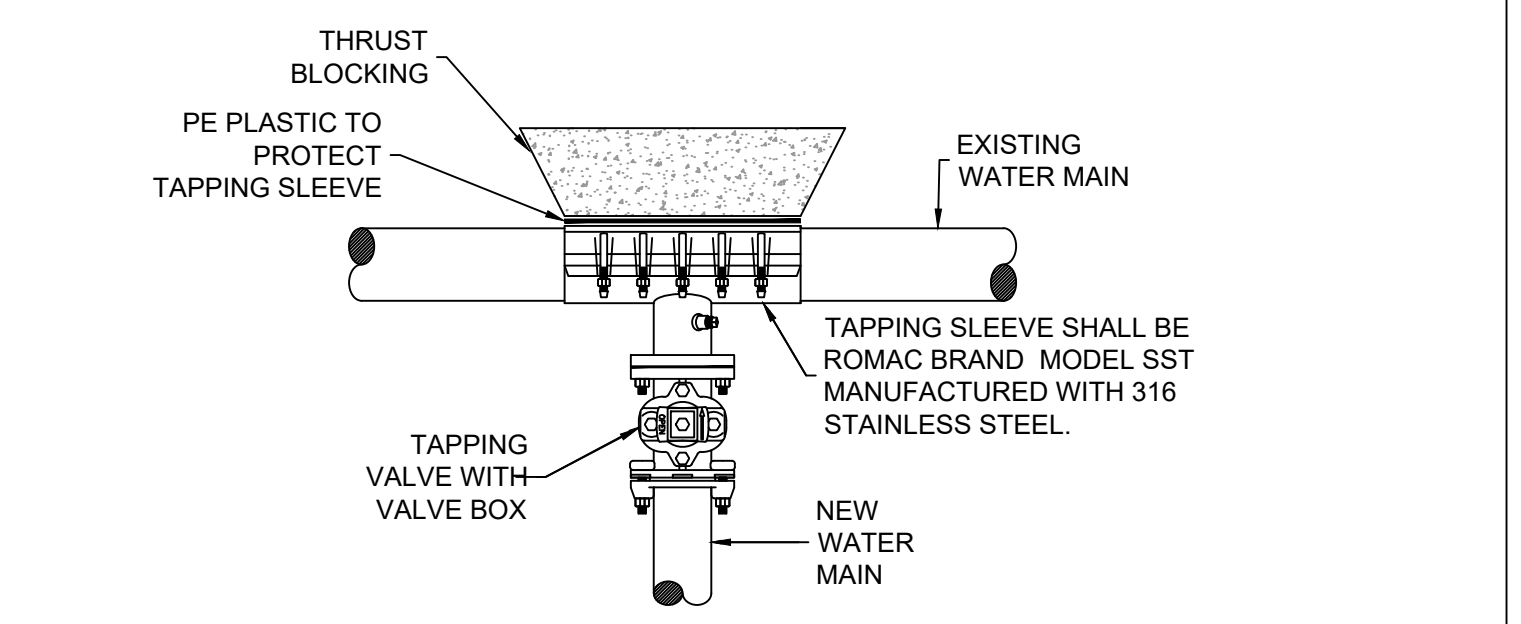
NOTES: NOTES: 1. CONCRETE SHALL BE 3,000 PSI MIN. 2. CONCRETE FOR THRUST BLOCKING SHALL BE KEPT FAIRLY DRY, THUS MAKING THE CONCRETE WEDGE SHAPE MORE EASILY FORMED WITH THE WIDEST PART (BLOCKING AREA) AGAINST UNDISTURBED SOIL. 3. NO CONCRETE SHALL COVER ANY BOLTS OR GLANDS. 4. ALL PIPING AND ACCESSORIES TO BE WRAPPED WITH 10 MIL. POLYETHYLENE PRIOR TO POURING BLOCKING. VOLUME OF THRUST BLOCKING SHALL BE AS SHOWN ON THE THRUST BLOCKING SCHEDULE. 5. RECORD DRAWINGS: This record drawing is intended for general information only, and has been prepared, in part, based upon information furnished by others. While this information is believed to be reliable, Draper Aden Associates did not perform an as-built survey, and cannot assure its accuracy. Thus, Draper Aden Associates is not responsible for the accuracy of this record drawing or for any errors or omissions which may have been incorporated into it as a result. Those relying on this record document are advised to obtain independent verification of its accuracy before applying it for any purpose.

PIPE SIZE	90° BEND		45° BEND		22.5° BEND		11.25° BEND		TEE			PLUG	
	A	B	A	B	A	B	A	B	A	B	C		D
4"	8"	12"	8"	8"	6"	6"	6"	6"	6"	8"	9"	10"	16"
6"	10"	12"	8"	10"	8"	8"	8"	8"	10"	10"	12"	12"	18"
8"	15"	13"	10"	10"	8"	8"	8"	8"	10"	10"	12"	12"	24"
10"	16"	14"	10"	12"	6"	10"	6"	10"	11"	14"	14"	25"	
12"	20"	16"	12"	14"	8"	12"	8"	12"	14"	16"	16"	30"	
14"	22"	18"	14"	16"	10"	14"	10"	14"	16"	18"	18"	34"	
16"	26"	20"	16"	18"	12"	16"	12"	16"	18"	20"	20"	36"	

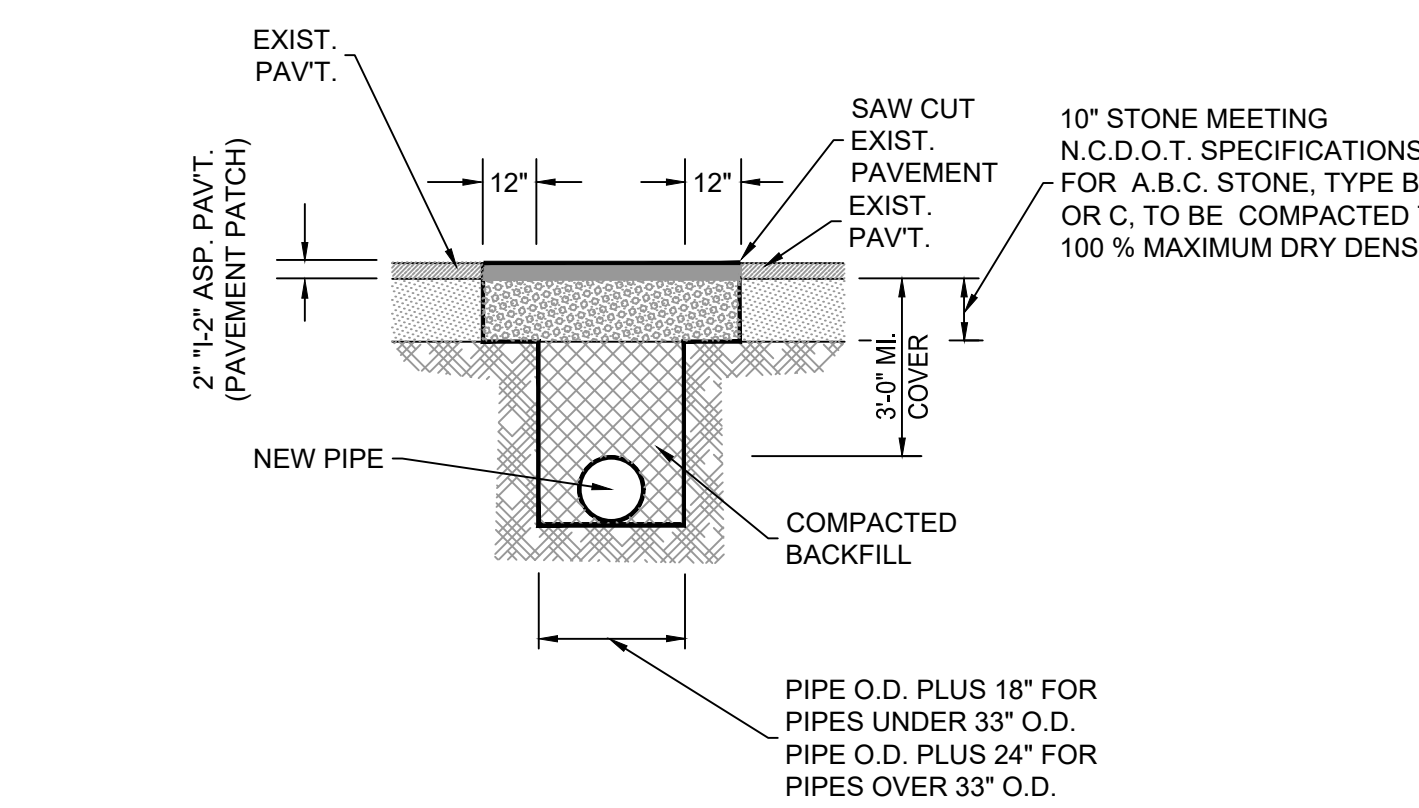
TYPICAL THRUST BLOCK DETAIL W 7



TYPICAL VALVE BOX DETAIL W 2

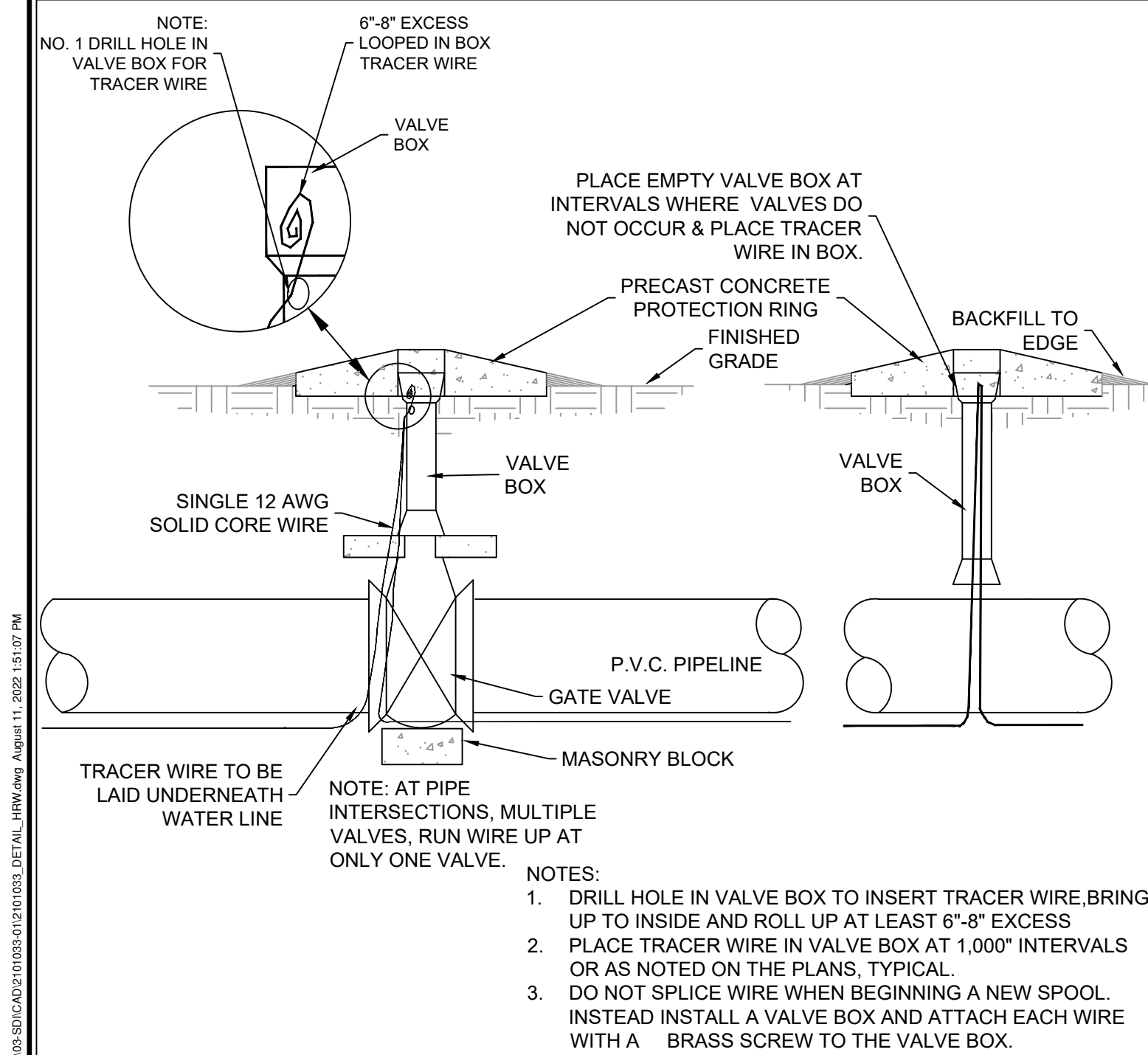


TYPICAL TAPPING SLEEVE AND VALVE ASSEMBLY DETAIL W 5

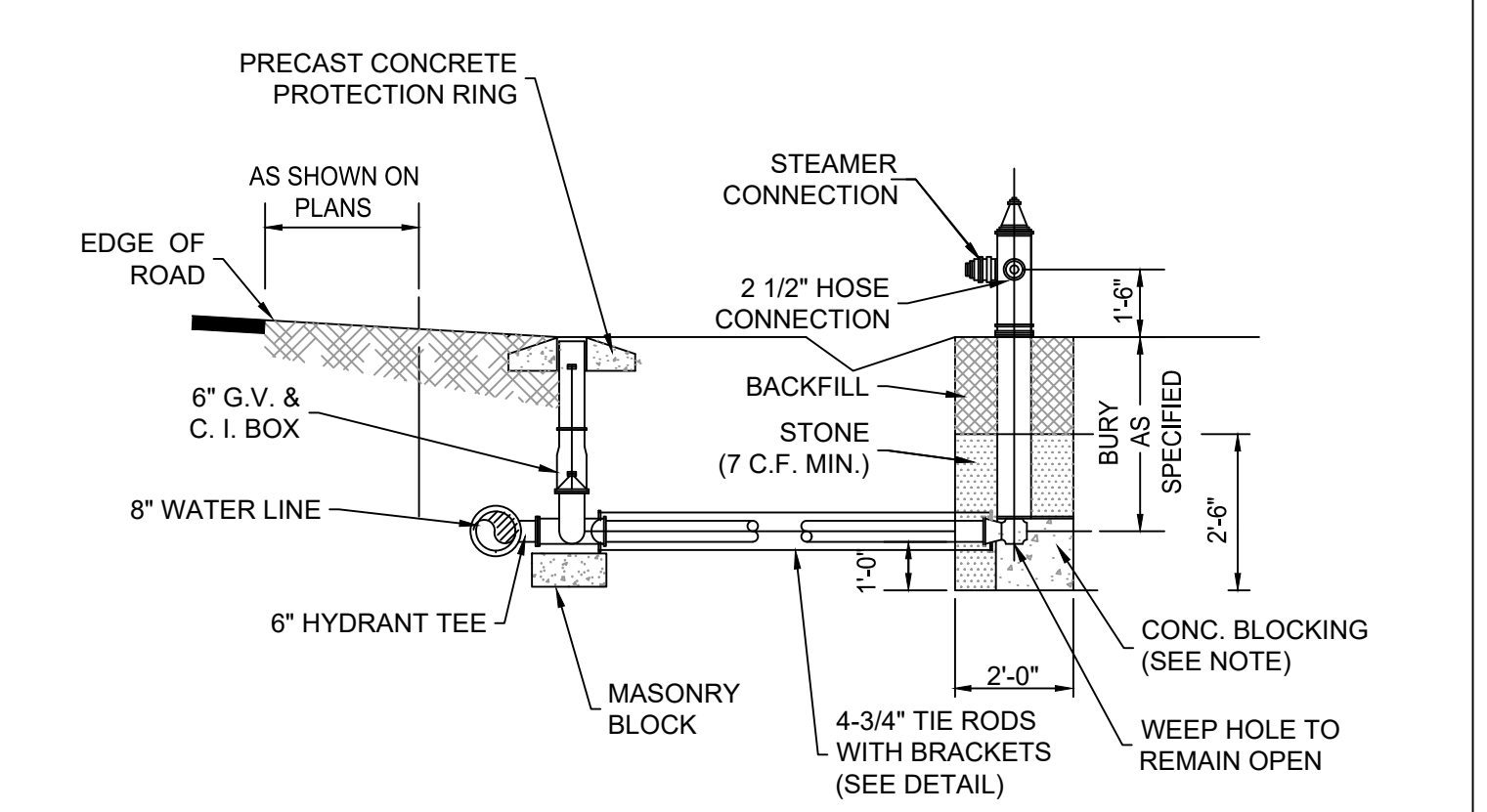


NOTES: 1. PAVEMENT SHALL BE CUT TO TRUE LINE AND REMOVED BEFORE TRENCH IS CUT. 2. STONE AND PAVEMENT TO BE PLACED WITH LEAST INTERFERENCE TO TRAFFIC. 3. STABILIZED AGGREGATE TO BE SECURED FROM AN APPROVED QUARRY. 4. ALL PAVEMENT REPAIRS TO BE IN ACCORDANCE WITH N.C.D.O.T. SPECIFICATIONS.

TYPICAL TRENCH IN BITUMINOUS SURFACE AREAS DETAIL W 10

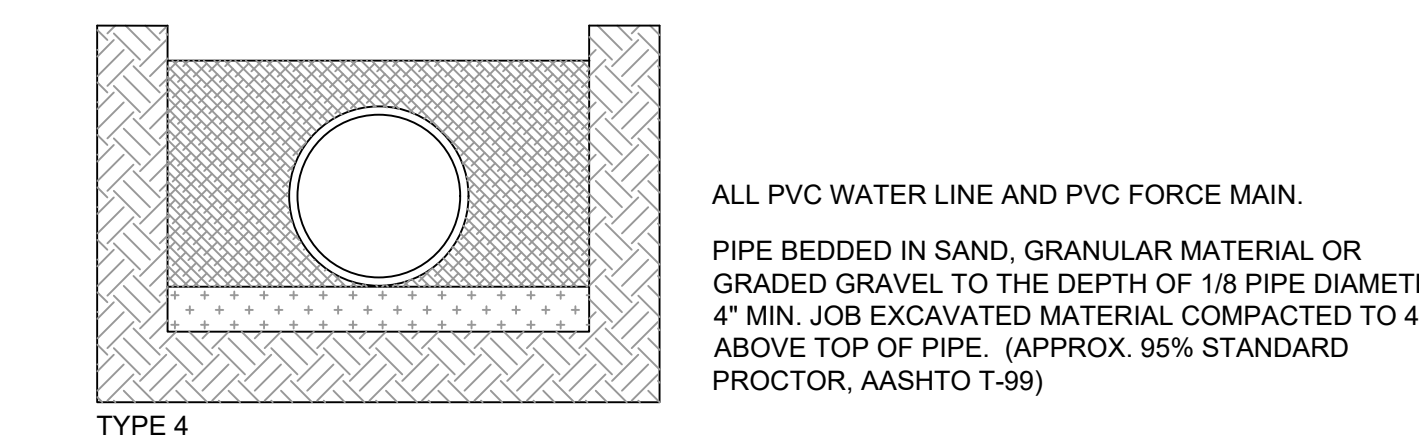


TYPICAL TRACER WIRE INSTALLATION DETAIL W 3

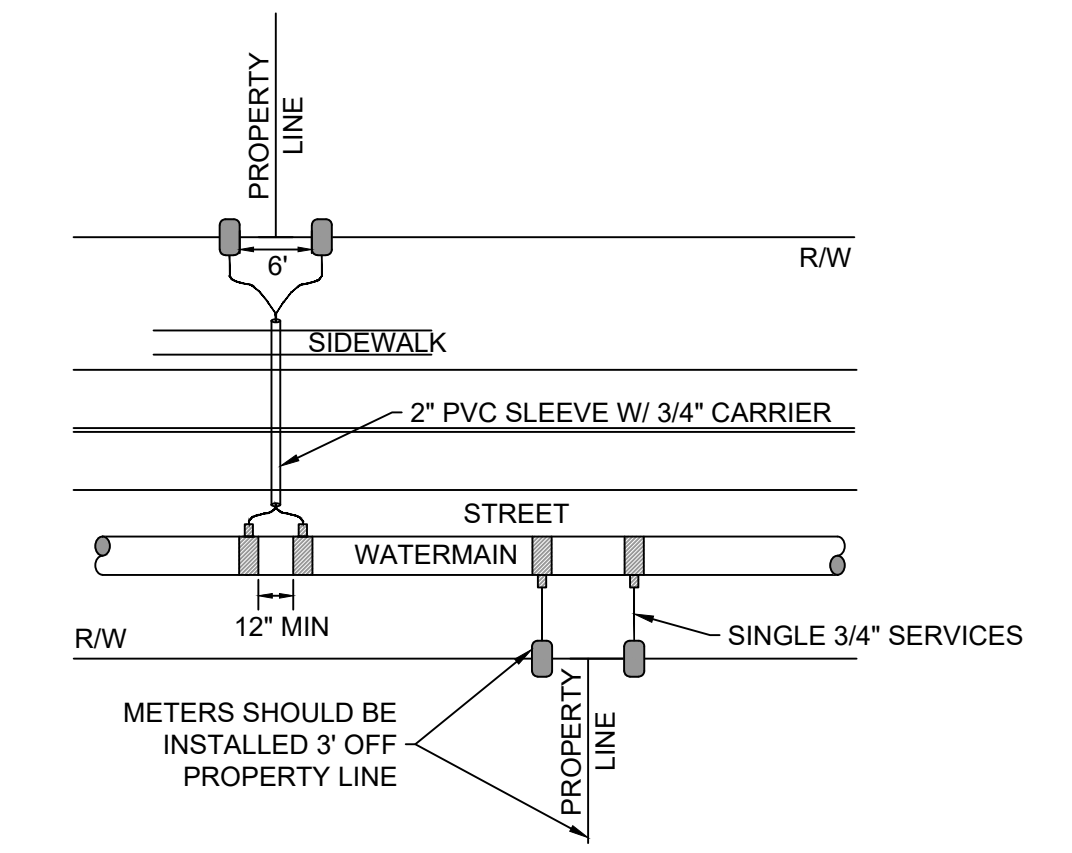


NOTE: 1. TIE HYDRANT TO MAIN LINE W/TIE RODS IN LIEU OF CONC. BLOCKING IN SANDY SOIL. 2. MECHANICAL JOINTS USED WITH GRIP RINGS

TYPICAL HYDRANT INSTALLATION DETAIL W 6

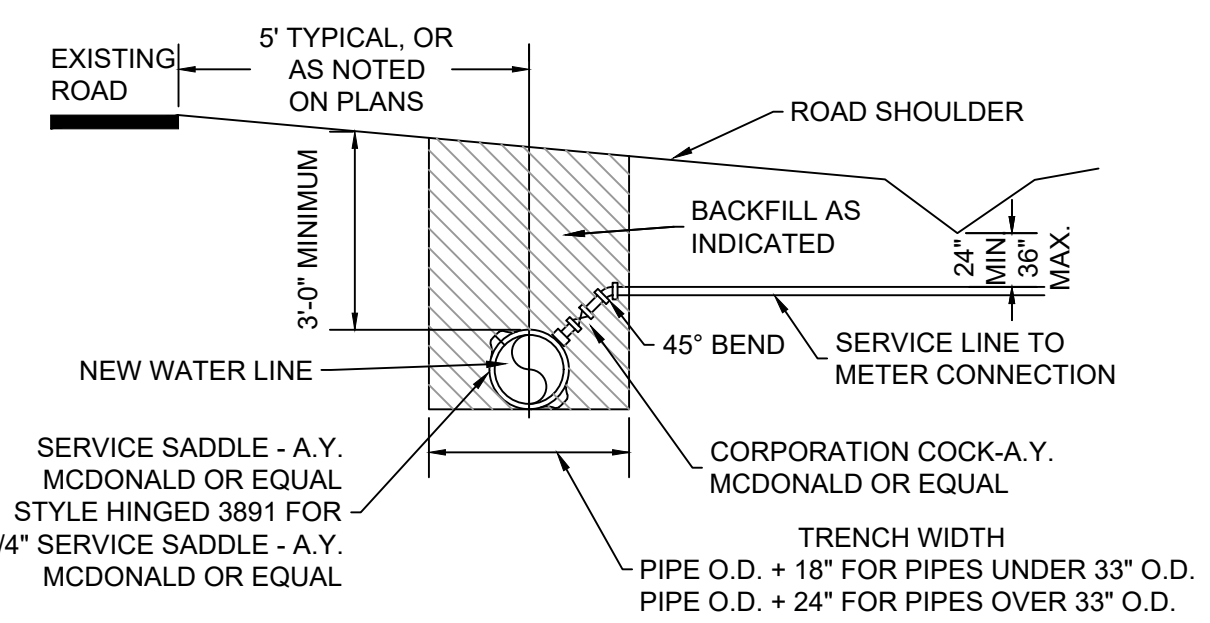


TYPICAL LAYING CONDITIONS DETAIL W 11



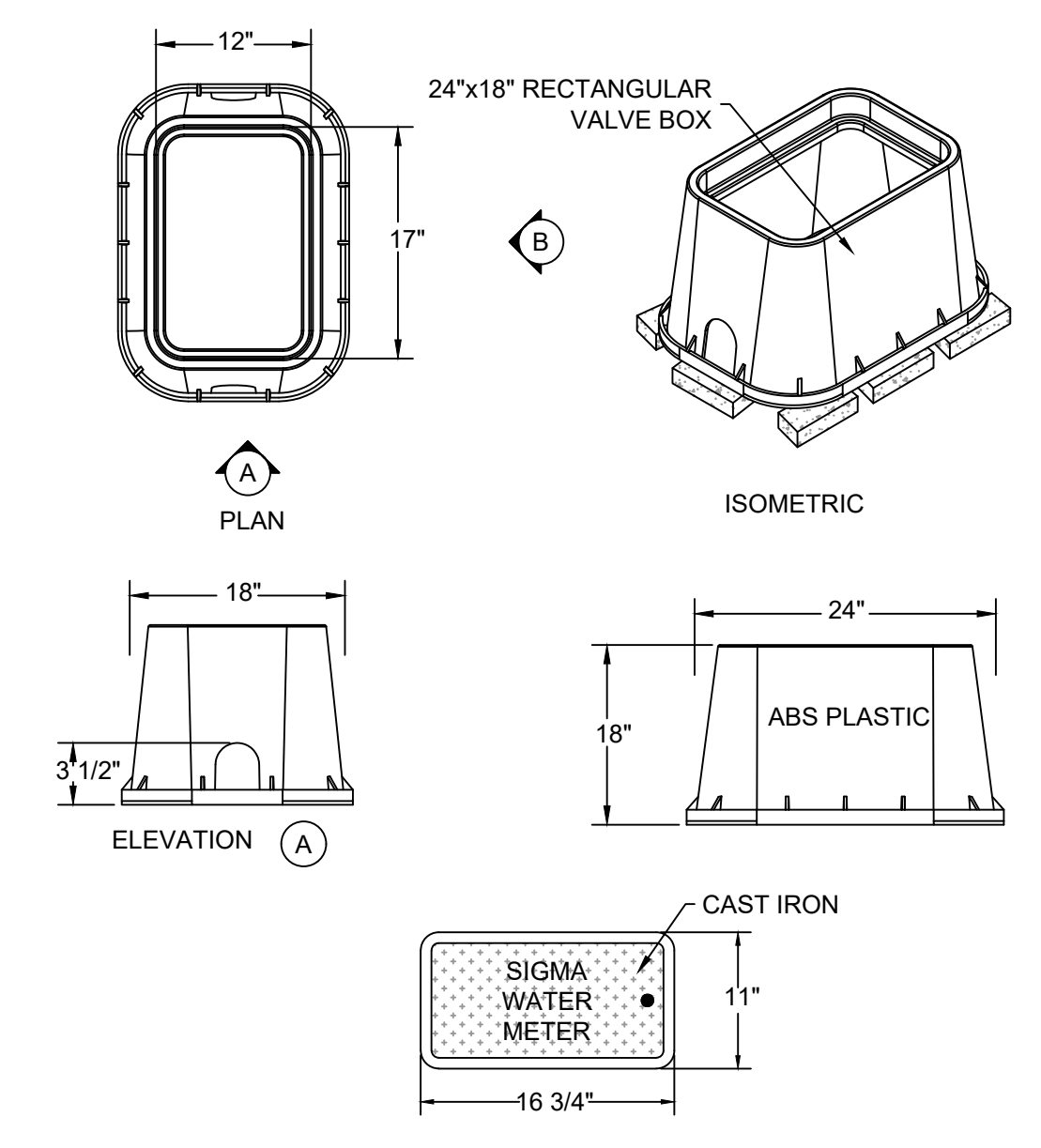
NOTES: 1. INSTALL METER AT R/W 2. TWO (2) 3/4" SERVICE LINES MUST BE INSTALLED INSIDE A 2" SLEEVE. 3. TWO (2) 1" SERVICE LINES MUST BE INSTALLED INSIDE A 3" SLEEVE. 4. SLEEVES SHOULD BE SCHEDULE 40 PVC PIPE. 5. SEE DETAIL FOR SERVICE MATERIAL AND METER SETTING. 6. SERVICE LINE SHALL BE 3' BELOW FINISHED GRADE OF DITCHES. 7. CONDUIT MUST EXTEND PAST PREPOSED SIDEWALK.

TYPICAL DOMESTIC WATER SERVICE INSTALLATION DETAIL W 12

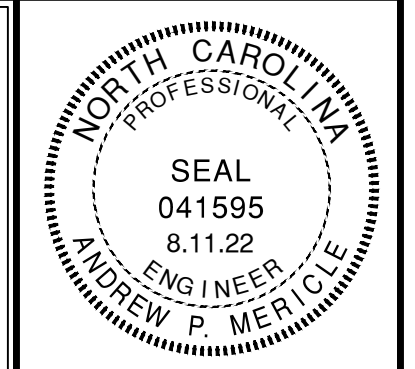


NOTE: 1. "SERVICE CONNECTION" IN PROPOSAL TO INCLUDE SERVICE SADDLE, 45° BEND, CORPORATION COCK AND ALL LABOR INVOLVED IN MAKING A COMPLETE SERVICE CONNECTION. 2. SERVICE PIPING TO BE 3/4" SDR-9 PE TUBING. 3. ALL BRASS FITTINGS SHALL BE COMPRESSION TYPE

TYPICAL WATER SERVICE CONNECTION USING TAPPING SADDLE DETAIL W 13



METER BOX DETAIL FOR 3/4" SERVICE W 15



Draper Aden Associates
 Engineering • Surveying • Environmental Services
 114 Edinburg South Drive, Suite 200
 Cary, NC 27511
 919-475-1660 Fax: 919-473-1074
 NC Firm License # F-1429

• Hampton Roads, VA
 • Fayetteville, NC
 • Northern Virginia
 • Charlottesville, VA
 • Virginia Beach, VA
 • Richmond, VA
 • Blacksburg, VA



HRW DETAILS
LEXINGTON PLANTATION POOL
 HARNETT COUNTY, NC

REVISIONS

DESIGNED BY:	
DRAWN BY:	
CHECKED BY:	
SCALE:	NONE
DATE:	4.26.22
PROJECT NUMBER:	2101033-01

C7.0