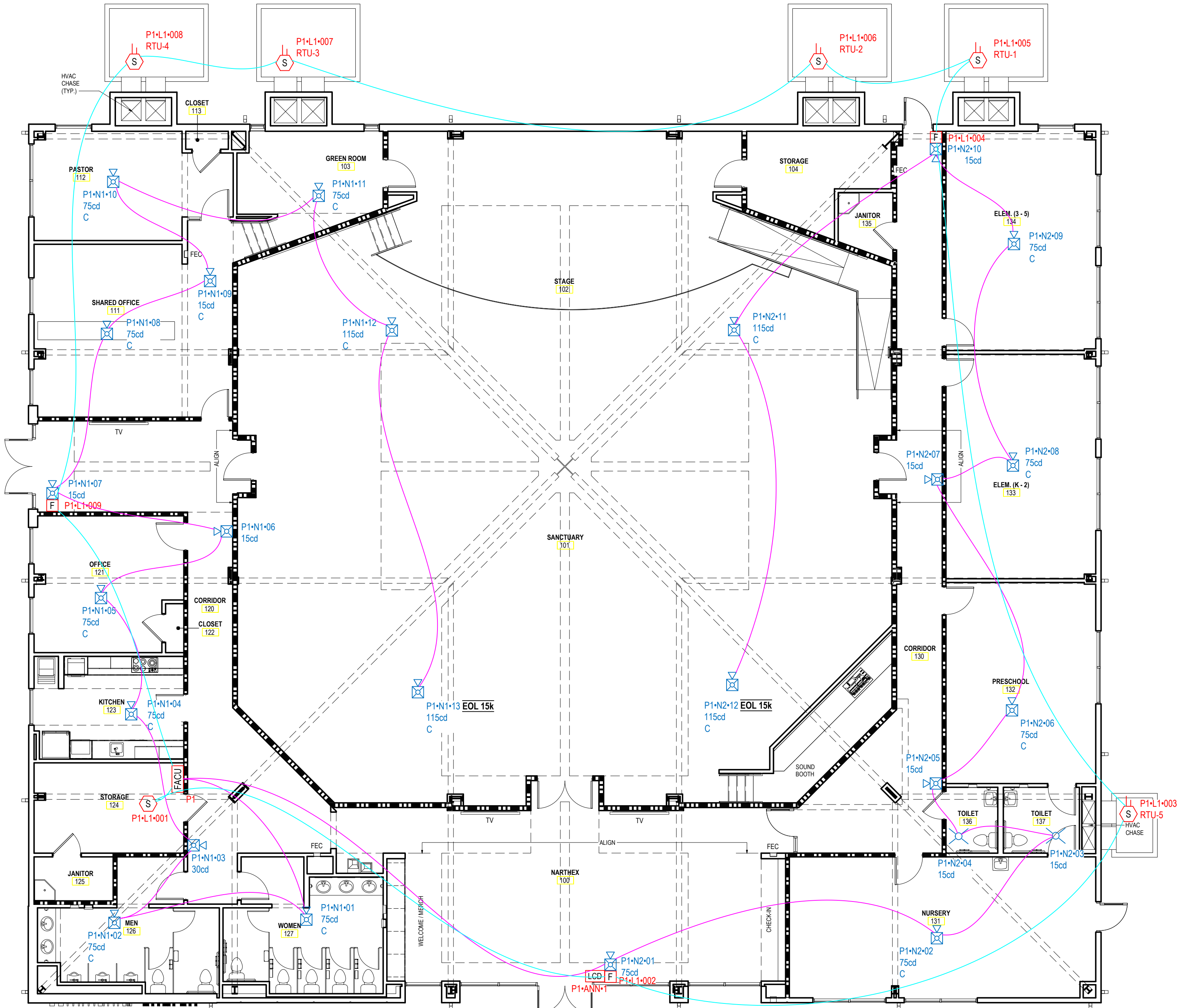
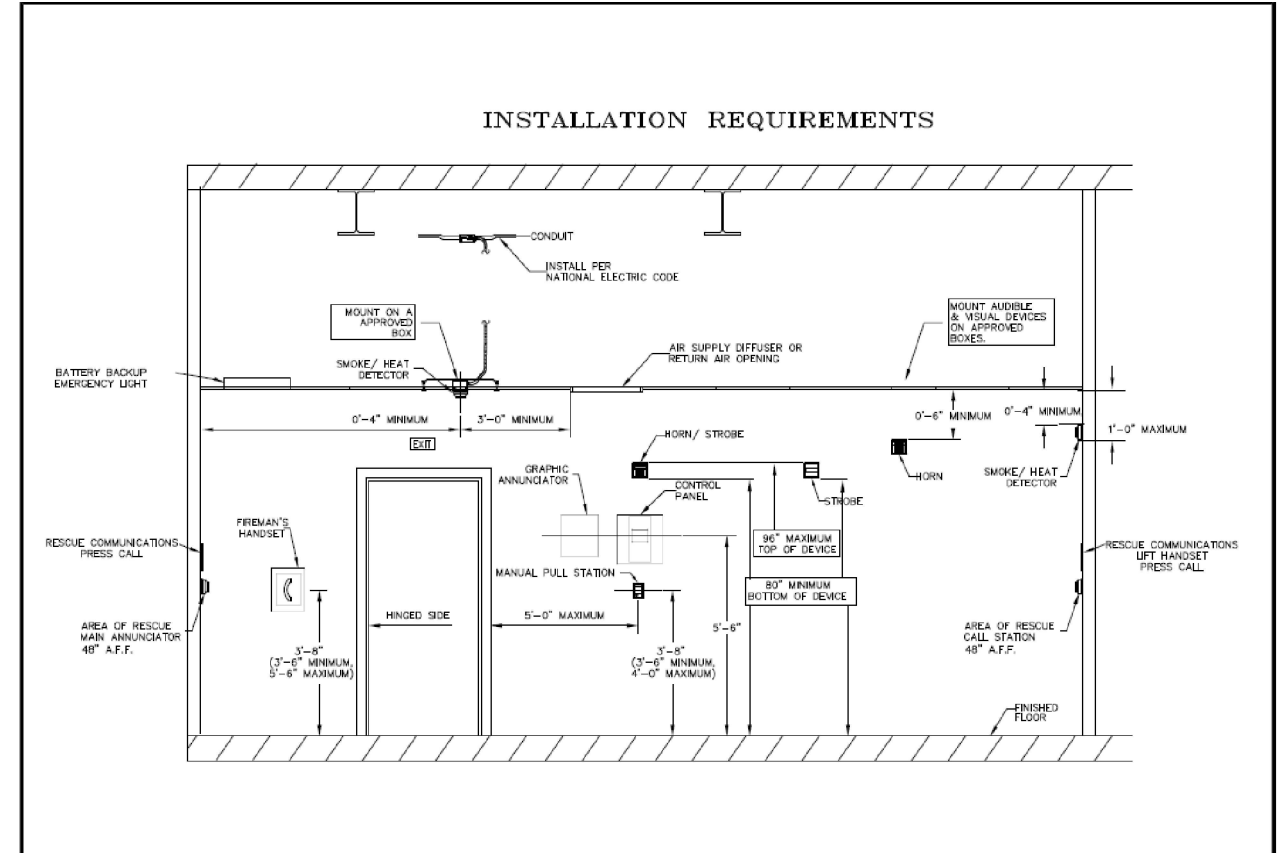


# Fire Alarm System

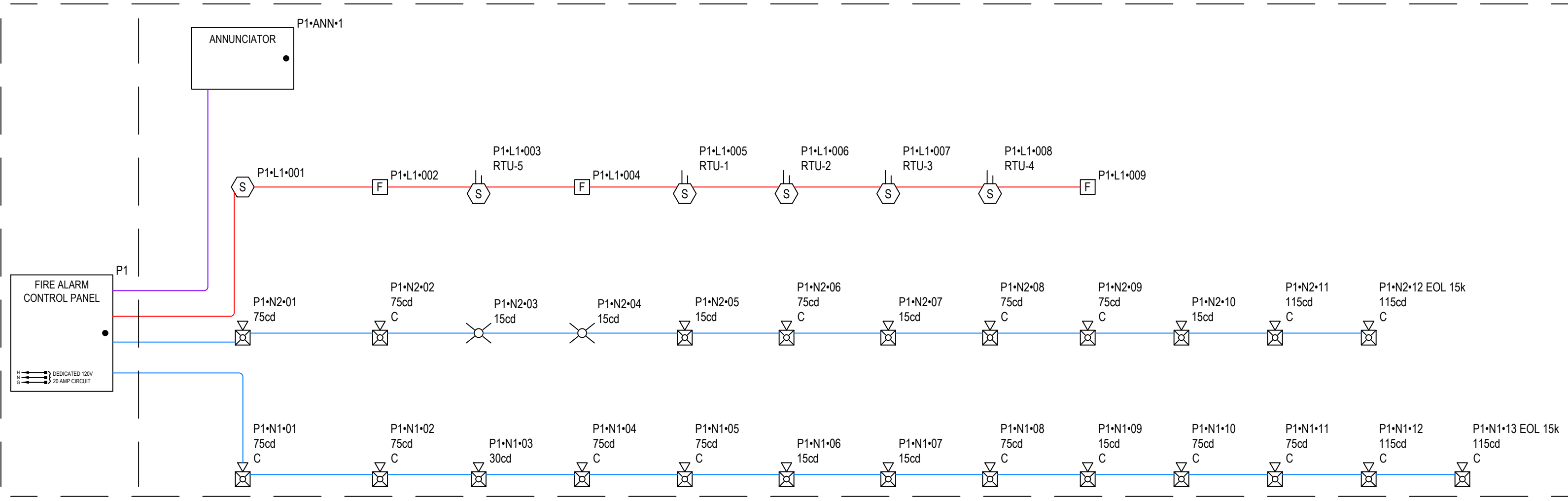
Central Security Systems, Inc.  
 370 N.W. Broad Street  
 Southern Pines, NC 28387  
 Voice: (910) 692-2871  
 Fax: (910) 692-1920  
 Email: dick-centralsecurity@nc.rr.com



PANEL P1 (VSI-RD) BATTERY CALCULATION											
SECONDARY POWER SOURCE REQUIREMENTS											
PANEL COMPONENTS					STANDBY CURRENT		SECONDARY ALARM CURRENT				
CIRCUIT	MAX CARD AMPS	USED CARD AMPS	SPARE CARD AMPS	SYMBOL	QTY	PART NO.	DESCRIPTION	CURRENT DRAW (A)	TOTAL (A)	CURRENT DRAW (A)	TOTAL (A)
					1	VSI-RD	FACP 1 LOOP, BAPT, 2 CL, 8 WACS, DIALER, RED, 20V	0.000	0.000	0.000	0.000
					1	VSI-RD	MANBOARD FOR VSI-RD ASSEMBLY	0.251	0.251	0.370	0.370
P1-ANN				LED	1	K-RLCD-C	LCD ANN, 4X20 LCD, W/COMMON LEADS & CTRLS, WHITE	0.000	0.000	0.000	0.000
P1-L1				F	1	GSA-M270	SIGNATURE SINGLE-ACTION FIRE ALARM STATION, ENGLISH MARKINGS, METAL	0.000	0.000	0.000	0.000
P1-L1				F	3	GSA-M270	SIGNATURE SINGLE-ACTION FIRE ALARM STATION, ENGLISH MARKINGS, METAL	0.00025	0.001	0.0004	0.001
P1-L1				S	5	GSA-SD	SIGNATURE SUPERDUCT PHOTOELECTRIC DUCT SMOKE DETECTOR	0.000	0.000	0.000	0.000
P1-L1				S	1	KI-OSD WKO-SB BASE	INTELLIGENT OPTICAL SMOKE DETECTOR	0.000	0.000	0.000	0.000
P1-N1	N/A	1.596200		EG1AWF	1	EG1AWF	HORN-STROBE, WALL, WHITE, FIRE 30CD	0.000	0.000	0.045	0.045
P1-N1				EG1AWF	2	EG1AWF	HORN-STROBE, WALL, WHITE, FIRE 15CD	0.000	0.000	0.055	0.110
P1-N1				EGCAWVF	2	EGCAWVF	HORN-STROBE, RUNNING MAN, WHITE, FIRE 115CD	0.000	0.000	0.060	0.120
P1-N1				EGCAWVF	1	EGCAWVF	HORN-STROBE, RUNNING MAN, WHITE, FIRE 15CD	0.000	0.000	0.075	0.075
P1-N1				EGCAWVF	7	EGCAWVF	HORN-STROBE, RUNNING MAN, WHITE, FIRE 75CD	0.000	0.000	0.075	0.525
P1-N1				EG1AWF	1	EG1AWF	HORN-STROBE, WALL, WHITE, FIRE 75CD	0.000	0.000	0.045	0.045
P1-N1				EG1AWF	3	EG1AWF	HORN-STROBE, WALL, WHITE, FIRE 15CD	0.000	0.000	0.055	0.165
P1-N1				EGCAWVF	2	EGCAWVF	HORN-STROBE, RUNNING MAN, WHITE, FIRE 115CD	0.000	0.000	0.060	0.120
P1-N1				EGCAWVF	4	EGCAWVF	HORN-STROBE, RUNNING MAN, WHITE, FIRE 75CD	0.000	0.000	0.075	0.300
P1-N1				EGCAWVF	2	EGCAWVF	STROBE, RUNNING MAN, WHITE, FIRE 15CD	0.000	0.000	0.045	0.090
							TOTAL STANDBY (A)	0.252		TOTAL ALARM (A)	1.966
							REQUIRED STANDBY TIME (HOURS)		24		
							REQUIRED ALARM TIME (MINUTES)		5		
							SECONDARY STANDBY LOAD (A)	0.252		24,000	6.042
							SECONDARY ALARM LOAD (A)	1.966		0.083	6.206
							STANDBY AND ALARM SUBTOTAL (AMP HOURS)				1,200
							OPERATING FACTOR				7.447
							SECONDARY LOAD REQUIREMENTS (AMP HOURS)				
							PROVIDE (2) 12V 12AH BATTERIES				
							*BATTERY BOX SIZE CAPACITY NOT SPECIFIED. REFER TO MANUFACTURER DOCUMENTATION.				



SYSTEM INPUTS	BUILDING SYSTEM OUTPUTS				CENTRAL COMMUNICATOR			
MANUAL FIRE ALARM PULL STATION	X	X	X	X	X	X	X	X
BUILDING SMOKE SYSTEM	X	X	X	X	X	X	X	X
BUILDING HEAT SYSTEM	X	X	X	X	X	X	X	X
SPRINKLER WATERFLOW	X	X	X	X	X	X	X	X
SPRINKLER WATERFLOW	X	X	X	X	X	X	X	X
FIRE ALARM CONTROL PANEL	X	X	X	X	X	X	X	X
FIRE ALARM SYSTEM LOW BATTERY	X	X	X	X	X	X	X	X
SPRINKLER	X	X	X	X	X	X	X	X
STROBE	X	X	X	X	X	X	X	X
REPEATER APPLIANCE CIRCUIT SHORT	X	X	X	X	X	X	X	X
HEAT DETECTORS	X	X	X	X	X	X	X	X



revisions

3D Community Church  
 658 Graham Road  
 Sanford, NC