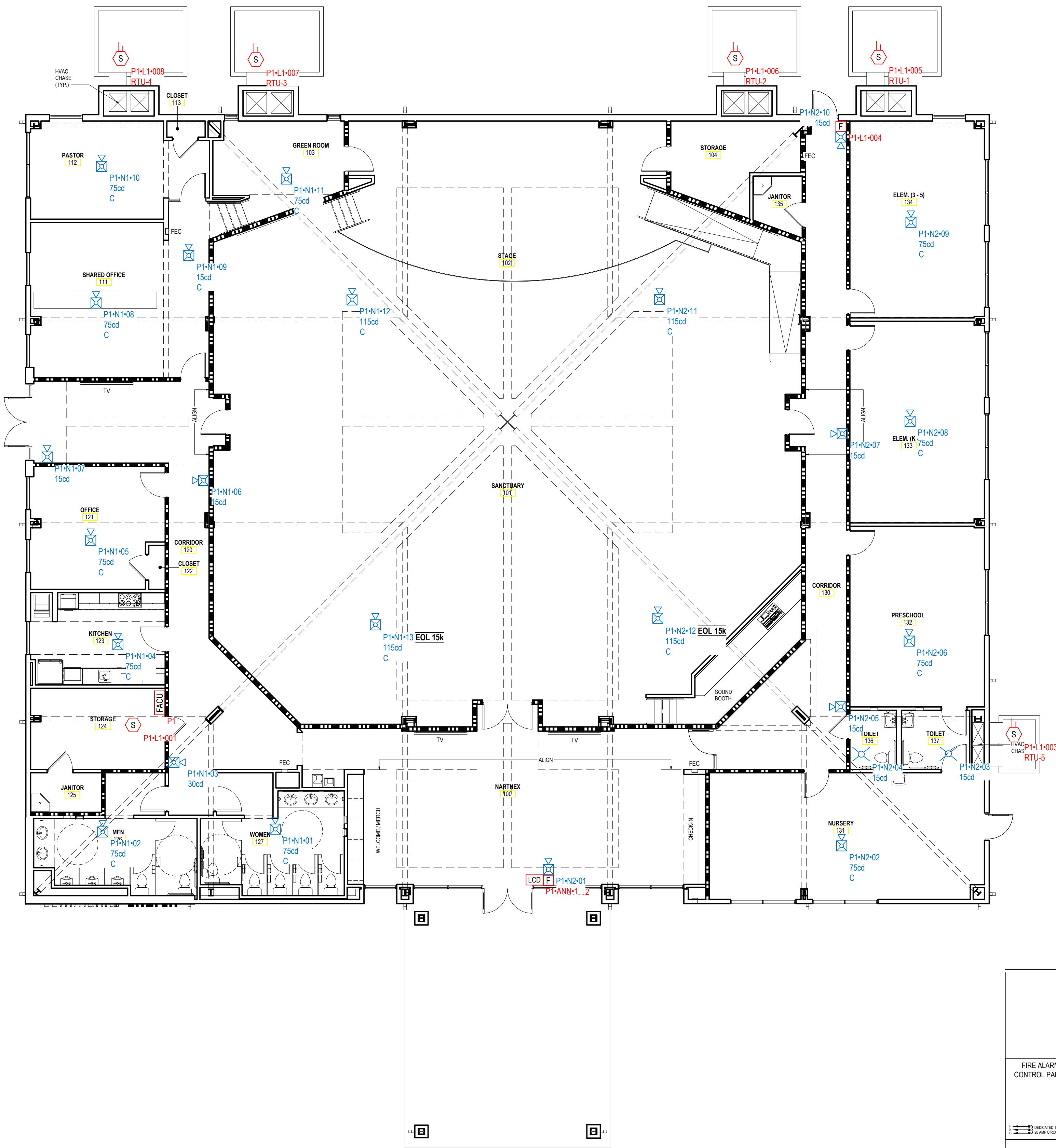
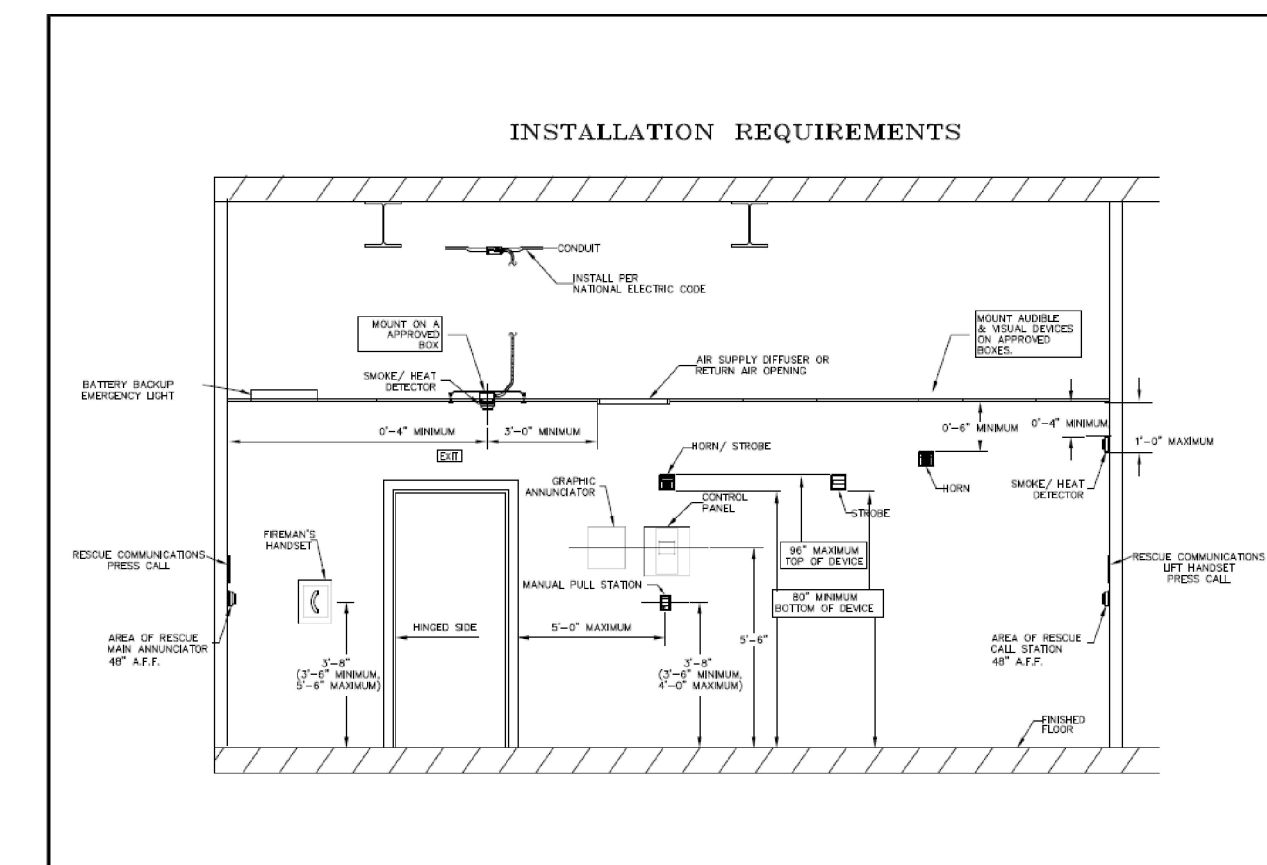


Fire Alarm System

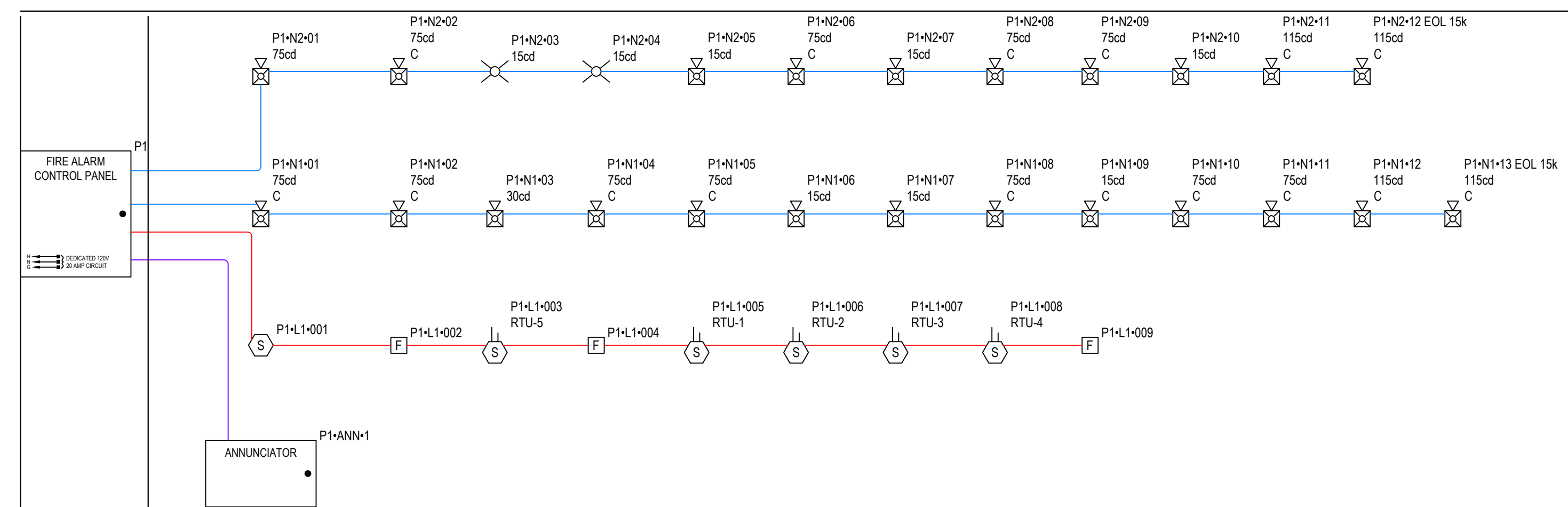
Central Security Systems, Inc.
 370 N.W. Broad Street
 Southern Pines, NC 28387
 Voice: (910) 692-2871
 Fax: (910) 692-1920
 Email: dick-centralsecurity@nc.rr.com



PANEL P1 (VS1-RD) BATTERY CALCULATION (SECONDARY POWER SOURCE REQUIREMENTS)								
PANEL COMPONENTS		QTY	PART NO.	DESCRIPTION	STANDBY CURRENT (AMPS)		SECONDARY ALARM CURRENT (AMPS)	
CIRCUIT	SYMBOL				CURRENT DRAW (A)	TOTAL (A)	CURRENT DRAW (A)	TOTAL (A)
Mainboard for VS1-RD assembly					0.251	0.251	0.37	0.37
P1-ANN	LCD	1	K-RLCD-C	LCD Ann. 4x20 LCD, w/COMMON LEDs & Chrs. white	0	0	0	0
P1-L1	F	3	GSA-M270	Signature single-action fire alarm station, English markings, metal	0.00025	0.00075	0.0004	0.0012
	⊕	5	GSA-SD	Signature SuperDuct photoelectric duct smoke detector	0	0	0	0
	S	1	KI-OSD w/KI-SB BASE	Intelligent Optical Smoke Detector	0	0	0	0
P1-N1	⊕	1	EG1A-WF	Horn/Strobe, Wall, White, FIRE 30scd	0	0	0.045	0.045
	⊕	2	EG1A-WF	Horn/Strobe, Wall, White, FIRE 15scd	0	0	0.055	0.11
	C	2	EGCA-WF	Horn-Strobe, running man, white, fire 115scd	0	0	0.06	0.12
	C	8	EGCA-WF	Horn-Strobe, running man, white, fire 75scd	0	0	0.075	0.6
P1-N2	⊕	1	EG1A-WF	Horn/Strobe, Wall, White, FIRE 75scd	0	0	0.045	0.045
	⊕	3	EG1A-WF	Horn/Strobe, Wall, White, FIRE 15scd	0	0	0.055	0.165
	C	2	EGCA-WF	Horn-Strobe, running man, white, fire 115scd	0	0	0.06	0.12
	C	4	EGCA-WF	Horn-Strobe, running man, white, fire 75scd	0	0	0.075	0.3
		2	EGCV-WF	Strobe, running man, white, fire 15scd	0	0	0.045	0.09
TOTAL STANDBY (A)					0.25175		TOTAL ALARM (A)	1.9662
SECONDARY STANDBY LOAD (A)					0.25175		24	6.04
SECONDARY ALARM LOAD (A)					1.9662		0.08	0.16
STANDBY AND ALARM SUBTOTAL (AMP HOURS)							6.21	
DERATING FACTOR							1.2	
SECONDARY LOAD REQUIREMENTS (AMP HOURS)							7.45	
PROVIDE (2) 12V 12AH BATTERIES @ 24VDC								



SYSTEM INPUTS	BUILDING SYSTEM OUTPUTS	CENTRAL COMMUNICATOR
MANUAL FIRE ALARM PULL STATION	X	X
BUILDING SMOKE DETECTOR	X	X
SPRINKLER WATERFLOW	X	X
SPRINKLER WATER	X	X
FIRE ALARM W/ POWER FAILURE	X	X
FIRE ALARM SYSTEM LOW BATTERY	X	X
SMK CIRCUIT	X	X
GROUND FAULT	X	X
RECONFIGURABLE ANNUNCIATOR CIRCUIT SHORT	X	X
NET INTERFERENCE	X	X



revisions

3D Community Church
 658 Graham Road
 Sanford, NC