



**NORTH CAROLINA
50' SERIES**

KB HOME
NORTH CAROLINA DIVISION

4518 S. MIAMI BLVD.
SUITE 180
DURHAM, NC 27703
TEL: (919) 768-7988
FAX: (919) 472-0582

**2018 NORTH
CAROLINA STATE
BUILDING
CODES**

ISSUE DATE: 01/19/21
PROJECT No.: 1350999-57
DIVISION MGR.: DS
REVISIONS:

PLAN:
150.1773-R
SHEET:
SO.1 C SO.1 B LEV
SPEC. LEVEL 1
**RALEIGH-DURHAM
SALES OFFICE**

GENERAL CONSTRUCTION PLAN NOTES

- A) DO NOT SCALE DRAWINGS. WRITTEN DIMENSIONS GOVERN.
- B) ALL DOOR AND OPENING LOCATIONS SHALL BE SHOWN ON FLOOR PLAN IN CASE OF CONFLICT, NOTIFY THE ARCHITECT IMMEDIATELY PRIOR TO COMMENCEMENT OF FRAMING.
- C) DIMENSION NOTED AS "CLEAR" SHALL BE MAINTAINED AND SHALL ALLOW FOR THICKNESS OF ALL FINISHES INCLUDING CARPET, PAD, VINYL, ETC...
- D) DIMENSION NOTED AS "HOLD" ARE CRITICAL. IF LAYOUT IS OFF, CONTACT ARCHITECT PRIOR TO FRAMING.
- E) ALL DIMENSION ARE TO THE FACE OF STUD, U.N.O.
- F) REFER TO ENLARGED PLANS FOR ADDITIONAL NOTES AND INFO.
- G) ALL GYPSUM WALLBOARD SHALL BE 1/2" TYPE "X" U.N.O.
- H) G.C. TO NOTIFY ARCHITECT IMMEDIATELY AS TO SIZE AND LOCATION OF ANY EXISTING EXPANSION JOINT LOCATED IN DEMISING WALL, FLOOR, OR CEILING CONSTRUCTION.
- I) G.C. TO CONFIRM SUITABILITY OF ALL WALLS TO RECEIVE PAINT AND/OR WALL COVERING IN A FIRST CLASS MANNER. G.C. TO CONTACT ARCHITECT/OWNER IF WALL(S) ARE NOT ACCEPTABLE TO RECEIVE FINISHES SPECIFIED. FLOOR INSTALLATION OVER UNSUITABLE SURFACES ARE THE CONTRACTORS RESPONSIBILITY.

SYMBOL LEGEND

- # DENOTES PLAN / STOREFRONT NOTE
- ⊕ DENOTES WINDOW NUMBER - REFER TO WINDOW SCHEDULE
- ⊙ DENOTES DOOR NUMBER - REFER TO DOOR SCHEDULE
- ⊕ DENOTES WALL TYPE IDENTIFICATION - REFER TO SHEET ADI
- ### DENOTES ROOM NUMBER - REFER TO ROOM FINISH SCHEDULE
- NEW WALL/PARTITION - FULL HEIGHT
- - - DENOTES DROPPED CLG. / SOFFIT - SEE PLAN FOR HEIGHT

CONSTRUCTION PLAN NOTES

- 1 LINE OF DROPPED SOFFIT, REFER TO RCP FOR HEIGHT.
- 2 NEW STOREFRONT - SEE EXTERIOR ELEVATIONS.
- 3 PROVIDE 3/8" TYPE X GYP. BRD ON ALL WALL, BEAMS, FLOOR JOIST ETC. AS WELL AS CEILING TRUSSES ADJACENT TO HABITABLE SPACE PER I.R.C. SECTION R304.2
- 4 ALL WALLS SHALL HAVE SQUARE CORNERS.
- 5 FURR OUT THE EXTERIOR WALLS TO THE GARAGE CURB.
- 6 GYP. BD. CEILING; REFER TO RCP FOR HEIGHT

NOTES

THE HATCHED AREA IS PART OF THE MODEL HOME DISPLAY AND IS NOT SUBJECT TO ACCESSIBILITY REQUIREMENTS AND IS NOT TO BE USED AS A PLACE OF PUBLIC ACCOMMODATIONS OR EMPLOYMENT.
NOTE: REFER TO THE PRODUCTION FLOOR PLAN FOR INFORMATION NOT SHOWN HERE.

SALES OFFICE ELEVATION NOTES

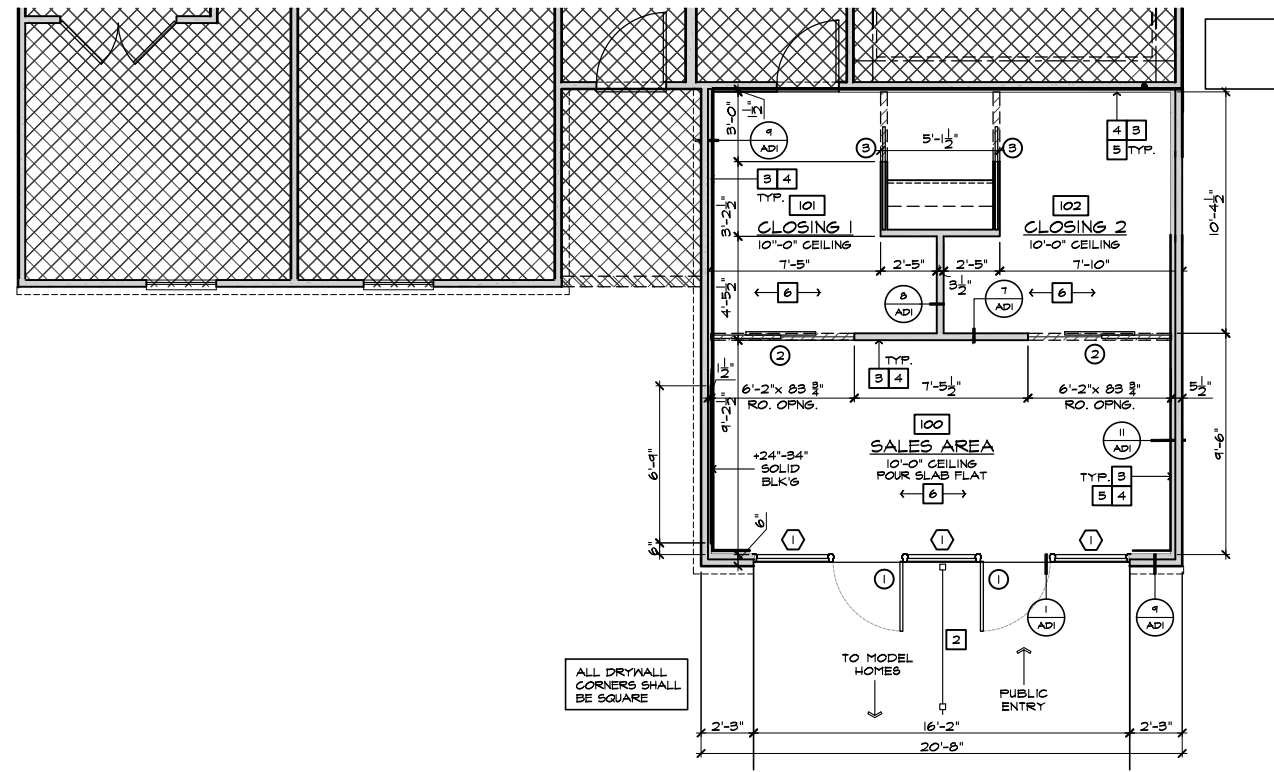
- 1. SINGLE LITE FRENCH DOOR OF MAIN SALES AREA (SEE PLAN AND ELEVATIONS FOR SIZE).
 - 2. TRIM - REFER TO ELEVATION FOR SIZE.
 - 3. DECORATIVE SHUTTER - REFER TO ELEVATION FOR SIZE
 - 4. 12"x12" KB LOGO ETCHED FROM REVERSE SIDE
 - 5. 3"x3" ETCHED SQUARES FROM REVERSE SIDE
 - 6. SATIN FINISH HANDLE
 - 7. RESERVED
 - 8. EXTERIOR FINISH - REFER TO BASE PLAN FOR FINISH TYPE.
- NOTE: REFER TO THE PRODUCTION ELEVATIONS FOR INFORMATION NOT SHOWN HERE.

STOREFRONT NOTES

- A NEW STOREFRONT, ENTRY DOORS AND TEMP. GLASS WINDOW WITH WOOD HEAD, JAMB AND SILL.
- B NEW MASONRY VENEER.
- C NEW DOOR AND WINDOW, REFERENCE DETAIL 4/ADI



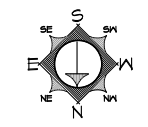
INTERIOR KEY



CONSTRUCTION PLAN

SCALE 1/4"=1'-0" (22"x34") - 1/8"=1'-0" (11"x17")

SALES OFFICE



| DOOR SCHEDULE | | | | | | | | | | | | | |
|---------------|---------|-------|--------|--------|------|----------|------------|------|----------------|-------------|---------|----------|---|
| DOOR NUMBER | ROOM | DOORS | | | | | FRAME | | HARDWARE GROUP | FIRE RATING | REMARKS | | |
| | | WIDTH | HEIGHT | THICK | TYPE | MATERIAL | FINISH | TYPE | | | | MATERIAL | FINISH |
| 1 | SALES | 5'-0" | 7'-0" | 1-3/4" | A | SL/MTL | FF | - | MTL | PT-F | 1 | N/A | STOREFRONT |
| 2 | CLOSING | 5'-0" | 6'-8" | 1-3/8" | B | SL/MTL | FF OR FT-S | - | N/A | N/A | 2 | N/A | TEMP. GLASS |
| 3 | COPY | 5'-0" | 6'-8" | 1-3/8" | C | WD | PT-S | - | N/A | N/A | 3 | N/A | 3-PANEL POCKET DOOR, FINISH CLEAR OPENING 32" |

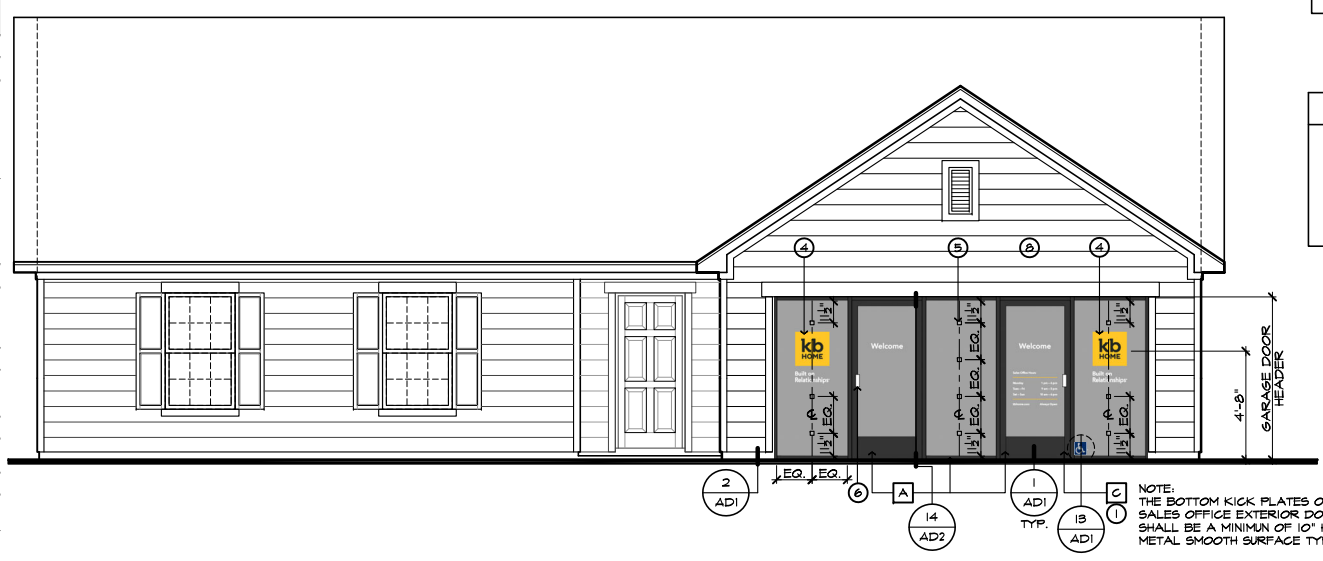
FF: FACTORY FINISH, PT: PAINT, REFER TO FINISH SCHEDULE

| DOOR TYPES | |
|------------|--------|
| | TYPE A |
| | TYPE B |
| | TYPE C |

| DOOR/HARDWARE NOTES | |
|---|--|
| ALL DOORS TO BE OPENABLE FROM INSIDE WITHOUT THE USE OF A KEY OR ANY SPECIAL KNOWLEDGE OR EFFORT. | |
| ALL HANDLES AND PULLS TO BE INSTALLED BETWEEN 36" AND 44" ABOVE FINISHED FLOOR. | |
| FRONT AND REAR DOORS TO BE KEYPED ALIKE. PROVIDE (3) SETS OF KEYS. MARK 'DO NOT DUPLICATE' ON KEYS. | |
| INTERIOR DOORS TO BE UNDERCUT 1/2". | |
| ALL DOORS TO BE SINGLE ACTION. | |
| FOR ALL CYLINDERS AND CORES TO BE PROVIDED BY CONTRACTOR. | |
| ALL DOORS TO BE SOLID CORE HARDBOARD "PAINT GRADE", U.N.O. | |
| PROVIDE A SIGN OVER THE MAIN ENTRY DOOR WITH 1" HIGH LETTERS WITH A CONTRASTING BACKGROUND THAT READS "THESE DOORS TO REMAIN UNLOCKED WHEN BUILDING IS OCCUPIED". | |

| GLAZING NOTES | |
|---|--|
| CLEAR GLASS: 1/2 INCH FLOAT GLASS, TYPE I; CLASS I; QUALITY Q3 (GLAZING SELECT QUALITY). | |
| TEMPERED GLASS: SAME AS SPECIFIED ABOVE FOR CLEAR GLASS, AND FULLY TEMPERED. USE AT ALL DOORS AND WINDOWS, AND WHERE SCHEDULED, IN COMPLIANCE WITH GOVERNING CODES. | |

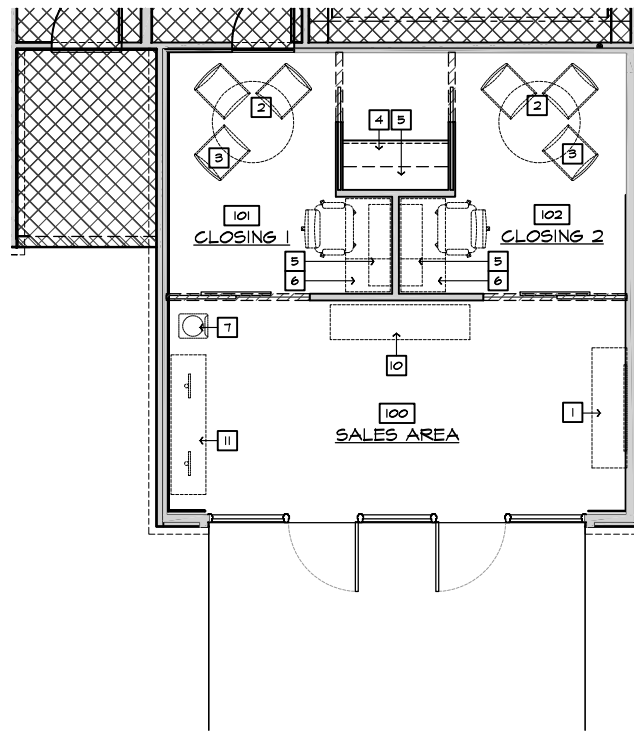
| HARDWARE SCHEDULE | |
|---|---|
| HARDWARE GROUP #1 (ENTRY DOORS) | |
| STOREFRONT SYSTEM | MFR. - KAWNEER TRIFAB 400 FRAMING SYSTEM OR EQUAL; CENTER PLANE GLASS (ALL GLASS TO BE TEMPERED); 4" X 1-3/4" FRAME; COLOR - #29 (BLACK ANODIZED) |
| DOOR | MFR. - KAWNEER STANDARD ENTRANCE DOOR, 350 MEDIUM STYLE, SINGLE ACTION; BOTT. RAIL 10" MIN; W/ OVERHEAD CLOSURE (INTERIOR SIDE); W/ BOTTOM RAIL WEATHERING OR EQUAL; COLOR - #29 (BLACK ANODIZED) |
| HINGES | MFR. - KAWNEER TOP AND BOTTOM 4-1/2" X 4" BALL BEARING BUTT HINGE WITH NON-REMOVABLE PIN (NRP) OR EQUAL; COLOR - #29 (BLACK ANODIZED) |
| LOCK | MFR. - ADAMS-RITE MS 1850A DEADLOCK WITH (2) 1-5/32" DIA. 5-PIN CYLINDERS OR EQUAL; COLOR - MATCH FRAMING COLOR |
| CLOSURE | MFR. - NORTON 1601 ADJUSTABLE OR EQUAL; COLOR - MATCH FRAMING COLOR |
| PUSH/PULLS | ARCHITECTS CLASSIC HARDWARE; STYLE - CO-12/CO-12; LENGTH - 12" OR EQUAL; COLOR - #29 (BLACK ANODIZED); ADA COMPLIANT |
| THRESHOLD | 1/2" X 4" ALUMINUM MILL THRESHOLD; ADA COMPLIANT OR EQUAL; COLOR - #29 (BLACK ANODIZED) |
| WEATHERSTRIP | WEATHERING SYSTEM IN DOOR AND FRAME BY KAWNEER |
| SIGNAGE | XXXX |
| HARDWARE GROUP #2 (CLOSING OFFICE) SLIDING | |
| HINGES | N/A |
| LOCKSET | NONE |
| PUSH/PULLS | MFR. - TRIMCO; API21 SERIES ARCHITECTURAL STRAIGHT PULLS; 12" CENTER-TO-CENTER; COLOR - MATTE BLACK; ADA COMPLIANT |
| CLOSER | NONE |
| DOOR STOP | NONE |
| SILENCER | NONE |
| HARDWARE GROUP #3 (COPY) | |
| POCKET ASSEMBLY | MFR. - JOHNSON HARDWARE; 153068 POCKET DOOR FRAME W/ #1125 BALL BEARING HANGERS/CARRIAGE ASSEMBLY; W/ SOFT CLOSE |
| DOOR | 36" X 80" X 1-3/8" 3-PANEL WOOD DOOR, PRIME AND PAINT |
| PUSH/PULLS | MFR. - TRIMCO; API21 SERIES ARCHITECTURAL STRAIGHT PULLS; 12" CENTER-TO-CENTER; COLOR - MATTE BLACK; ADA COMPLIANT |



EXTERIOR ELEVATION 'A'

SCALE 1/4"=1'-0" (22"x34") - 1/8"=1'-0" (11"x17")

SALES OFFICE



GENERAL FURNISHINGS, FIXTURES NOTES:

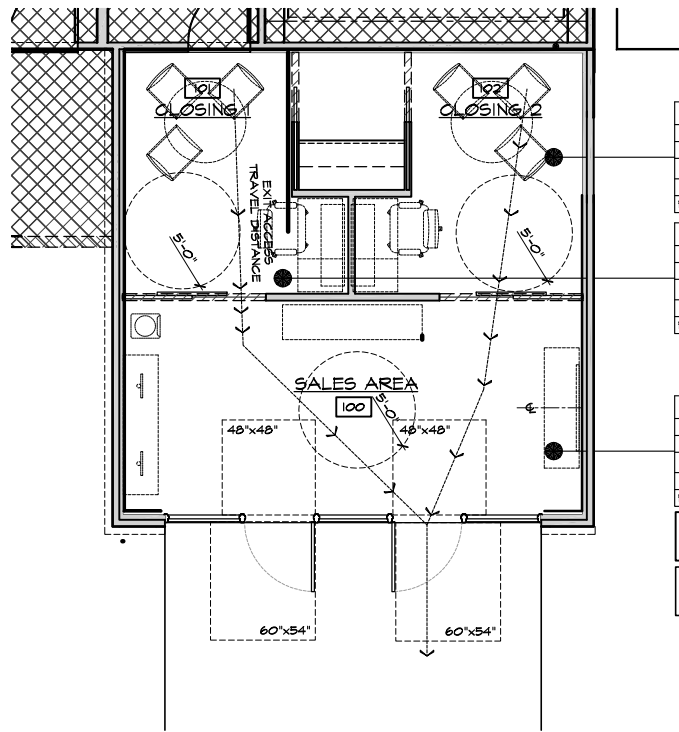
THE MINIMUM CLEAR AISLE WIDTH SHALL NOT BE LESS THAN 36"
 THE MINIMUM CLEAR WIDTH FOR AN AISLE ACCESSWAY NOT REQUIRED TO BE ACCESSIBLE SHALL NOT BE LESS THAN 30"

FURNISHINGS, FIXTURES & EQUIPMENT NOTES

- 1 LOOSE FURNITURE- CREDENZA
- 2 LOOSE FURNITURE- TABLE
- 3 LOOSE FURNITURE- CHAIR
- 4 24" DP BASE CABINET WITH COUNTERTOP
- 5 UPPER CABINETS
- 6 LOOSE FURNITURE- DESK
- 7 WATER COOLER
- 8 WALL GRAPHICS BY OTHERS SEE ALSO INTERIOR ELEVATIONS FOR LOCATIONS OF GRAPHICS AND FIELD GUIDE SUPPLIED SEPARATELY.
- 9 TOUCHSCREEN TV
- 10 LOOSE FURNITURE- BENCH WITH DRAWERS
- 11 FLOATING SHELF
- 12 UNDERCOUNTER REFRIGERATOR
- 13 COPIER

FURNITURE, FIXTURE & EQUIPMENT

SCALE 1/4"=1'-0" (22"x34") - 1/8"=1'-0" (11"x17") SALES OFFICE



| CLOSING 1 | |
|----------------|----|
| AREA | 87 |
| LOAD FACTOR | 80 |
| OCCUPANCY | 1 |
| REQ'D EXITS | 1 |
| PROVIDED EXITS | 1 |

| CLOSING 2 | |
|----------------|----|
| AREA | 86 |
| LOAD FACTOR | 80 |
| OCCUPANCY | 1 |
| REQ'D EXITS | 1 |
| PROVIDED EXITS | 1 |

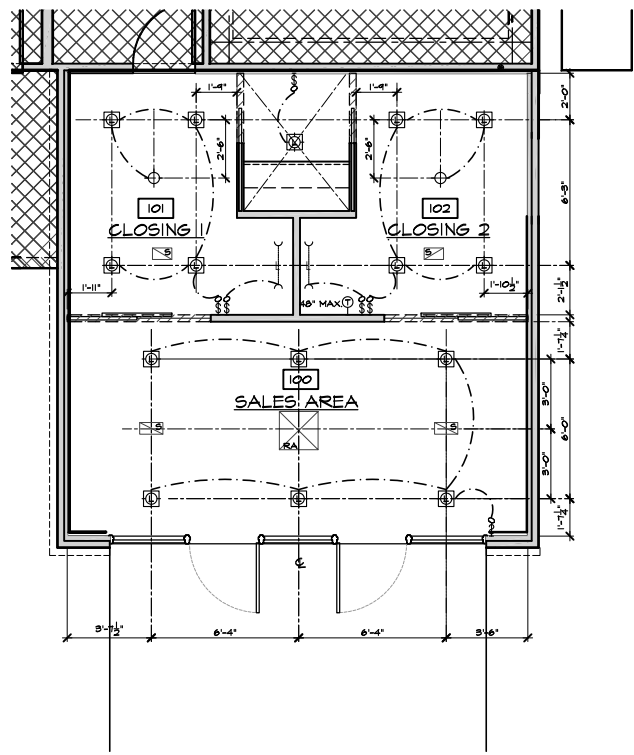
| CLOSING 2 | |
|----------------|-----|
| AREA | 182 |
| LOAD FACTOR | 80 |
| OCCUPANCY | 2 |
| REQ'D EXITS | 1 |
| PROVIDED EXITS | 1 |

TOTAL OCCUPANT LOAD = 4

PER SECTION 1015/TABLE 1015.1
 1 EXIT IS REQUIRED

OCCUPANCY AND EGRESS PLAN

SCALE 1/4"=1'-0" (22"x34") - 1/8"=1'-0" (11"x17") SALES OFFICE



G.C. RESPONSIBLE FOR PURCHASE AND INSTALLATION OF ALL LOW VOLTAGE WIRING, CAT-5E, SPEAKER WIRES, ETC.
 NOTE: ELECTRICALS TO VERIFY IN FIELD

GENERAL REFLECTED CEILING PLAN NOTES

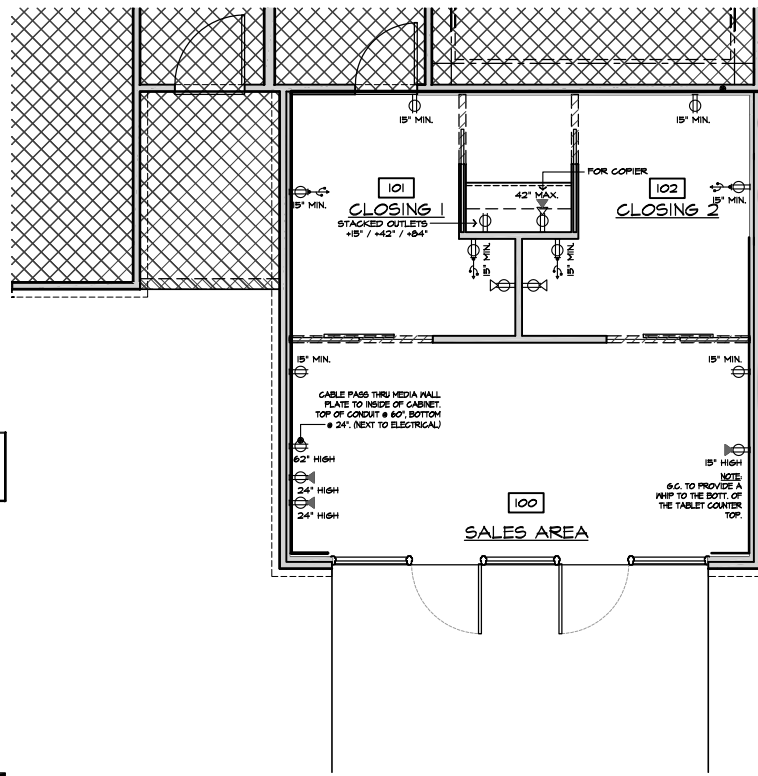
- A) ALL CEILING HEIGHTS INDICATED ON PLANS ARE FROM TOP OF FINISH FLOOR TO UNDERSIDE OF FINISH CEILING UNO. (MIN. CEILING HEIGHT T-6")
- B) PROVIDE ADEQUATE CLEARANCES FOR DUCTS AND RELATED APPURTENANT ITEMS NECESSARY TO MAINTAIN THE SPECIFIED CEILING HEIGHT ABOVE THE FINISH FLOOR FOR LIGHT FIXTURES.
- C) SEE ELECTRICAL DRAWINGS FOR FIXTURE MODEL NUMBER AND QUANTITIES.
- D) PROVIDE HANGER AND SAFETY WIRE FOR LIGHT FIXTURES, SPEAKERS AND AIR SUPPLY/RETURN DIFFUSERS (AS REQUIRED)
- E) SEE MECHANICAL DRAWINGS FOR DIFFUSER LOCATIONS. ARCHITECTURAL DRAWINGS DETERMINE LUMINAIRE LOCATION AND OTHER ARCHITECTURAL ITEMS AND SUPERCEDE ALL OTHER CEILING APPURTENANCES.
- F) PREP AND PAINT ENTIRE SALES FLOOR EXPOSED CEILING, DECK, DUCTS, PIPING, ETC., (PER MANUFACTURER'S SPECIFICATIONS)
- G) IT IS THE CONTRACTOR'S RESPONSIBILITY TO AIM SPOT LIGHTS PER OWNER'S DIRECTION. (APPROXIMATE HEIGHT FOR HOT SPOT AT T2')
- H) ALL ELEMENTS SUSPENDED FROM THE DECK THAT OVERHANGS A PEDESTRIAN WAY SHALL BE A MINIMUM OF 80" ABOVE THE WALKING SURFACE AS MEASURED FROM THE BOTTOM OF THE OBSTRUCTION PER 2007 C.B.C. SECTION 1189B.02.

| SYM. | REFLECTED CEILING NOTES | NO. FXT. | FXT. WATT' G |
|------|-------------------------|----------|--------------|
|------|-------------------------|----------|--------------|

- ⊗ RETURN AIR REGISTER, MOUNT IN 6YRBD. CEILING 1 -
- ⊠ SUPPLY AIR REGISTER, MOUNT IN 6YRBD. CEILING 4 -
- ☐ SEAGULL LIGHTING MODEL 146095-15 TRAVERSE 6-IN. LED DOWNLIGHT WARM WHITE 2700 K 100 LUMENS 105 1/2 BEAM SPREAD 14.5 IN RATED FOR 50,000 HOURS 5 YEAR WARRANTY. 10 14.5
- ⊕ SEAGULL LIGHTING HANGING LIGHT PER SALES OFFICE SPEC. GUIDE 2 12
- LED UNDERCABINET LIGHTING 1 15
- ALL FINISHED RECEPT., SWITCHES & PLATES TO BE WHITE UNO. - -

REFLECTIVE CEILING PLAN

SCALE 1/4"=1'-0" (22"x34") - 1/8"=1'-0" (11"x17") SALES OFFICE



UTILITY PLAN

SCALE 1/4"=1'-0" (22"x34") - 1/8"=1'-0" (11"x17") SALES OFFICE

SYMBOL LEGEND

- DENOTES PLAN NOTE
- ### DENOTES ROOM NUMBER - REFER TO ROOM FINISH SCHEDULE
- ← DENOTES DIRECTION OF TRAVEL

ACCESSIBLE ROUTE NOTES

- 1 44" WIDE CLEAR EGRESS PATH TO BE MAINTAINED THROUGHOUT THE SALES FLOOR
- 2 ACCESSIBLE FIXED WRITING TABLE NOT TO EXCEED 2'-10" MAX. HEIGHT

ACCESSIBILITY CONSTRUCTION PLAN NOTES

- DOOR HARDWARE.** HAND-ACTIVATED DOOR OPENING HARDWARE SHALL BE MOUNTED 2'-10" A.F.F. AND BE OPERABLE WITH A SINGLE EFFORT BY LEVER TYPE HARDWARE.
- DOOR EFFORT.** MAXIMUM EFFORT TO OPERATE DOORS SHALL NOT EXCEED 5 POUNDS FOR EXTERIOR DOORS AND 5 POUNDS FOR INTERIOR DOORS.
- SMOOTH DOOR BOTTOM.** THE BOTTOM 10" OF ALL DOORS (EXCEPT SLIDING AUTOMATIC) SHALL HAVE A SMOOTH UNINTERRUPTED SURFACE TO ALLOW THE DOOR TO BE OPENED BY A WHEELCHAIR FOOTREST WITHOUT CREATING A TRAP OR HAZARDOUS CONDITION.
- REQUIRED DOOR OPENING.** ALL REQUIRED EXIT DOORWAYS SHALL HAVE A MINIMUM 32" CLEAR OPENING WITH THE DOOR AT 90 DEGREES TO THE CLOSED POSITION. EVERY REQUIRED ENTRANCE OR PASSAGE DOORWAY SHALL BE OF A SIZE AS TO PERMIT THE INSTALLATION OF A DOOR NOT LESS THAN 3'-0" IN WIDTH AND NOT LESS THAN 6'-8" IN HEIGHT.
- THRESHOLD HEIGHT.** MAXIMUM HEIGHT OF THRESHOLD SHALL BE 1/2" WITH VERTICAL CHANGE AT EDGE OF 1/2 WITH A MAXIMUM LEVEL OF 45 DEGREES CHANGE IN LEVEL BETWEEN 1/4" AND 1/2" SHALL BE BEVELED WITH A SLOPE NO GREATER THAN 1:2.
- FAUCET LEVERS.** ALL FAUCET CONTROLS FOR SINKS (EXISTING AND/OR NEW) ARE TO BE OPERABLE WITH LEVER TYPE CONTROLS.
- PLUMBING PROTECTION.** ALL EXPOSED PLUMBING IS TO BE WRAPPED WITH INSULATION.
- DOOR OPERABILITY.** LATCHING AND LOCKING DOORS THAT ARE HAND ACTIVATED AND WHICH ARE IN A PATH OF TRAVEL SHALL BE OPERABLE WITH A SINGLE EFFORT BY LEVER TYPE HARDWARE, PANIC BARS OR OTHER HARDWARE DESIGNED TO PROVIDE PASSAGE WITHOUT REQUIRING THE ABILITY TO GRASP THE OPENING HARDWARE.
- CHANGES IN LEVEL.** ABRUPT CHANGES IN LEVEL ALONG ACCESSIBLE ROUTES SHALL NOT EXCEED 1/2" IN HEIGHT. WHEN CHANGES IN LEVEL DO OCCUR, THEY SHALL BE BEVELED WITH A SLOPE OF NO GREATER THAN 1:12, EXCEPT THAT LEVEL CHANGES NOT EXCEEDING 1/4" MAY BE VERTICAL.
- DOOR LANDING AREAS.** THE FLOOR OR LANDING ON EACH SIDE OF AND ENTRANCE OR PASSAGE DOOR SHALL BE LEVEL AND CLEAR IN THE LENGTH ON THE DIRECTION OF THE DOOR SWING AT LEAST 60", AND THE LENGTH ON THE OPPOSITE SIDE OF THE DOOR SWING AT 44" AS MEASURED PERPENDICULAR TO THE PLAN OF THE DOOR IN ITS CLOSED POSITION.
- AVAILABLE SIDE ACCESS TO DOORS.** THE WIDTH OF THE LEVEL AND CLEAR AREA ON THE SIDE TO WHICH THE DOOR SWINGS SHALL EXTEND 24" PAST THE STRIKE EDGE OF THE DOOR FOR EXTERIOR DOORS AND 18" PAST THE STRIKE EDGE FOR INTERIOR DOORS.
- TOILET CONTROLS.** TOILET FLUSH CONTROLS PROVIDED AND INSTALLED AS PART OF THE WORK SHALL BE OPERABLE WITH ONE HAND, AND SHALL NOT REQUIRE TIGHT GRASPING, PINCHING OR TWISTING OF THE WRIST. CONTROL FOR THE FLUSH VALVES SHALL BE MOUNTED ON THE WIDE SIDE OF THE TOILET AREA. NO MORE THAN 44" ABOVE THE FLOOR. THE FORCE REQUIRED TO ACTIVATE THE CONTROLS SHALL BE NO GREATER THAN 5 POUNDS.
- OTHER FLUSH CONTROLS.** OTHER FLUSH CONTROLS PROVIDED AND INSTALLED AS PART OF THE WORK SHALL BE OPERABLE WITH ONE HAND, AND SHALL NOT REQUIRE TIGHT GRASPING, PINCHING OR TWISTING OF THE WRIST. CONTROL FOR THE FLUSH VALVES SHALL BE MOUNTED ON THE WIDE SIDE OF THE TOILET AREA. NO MORE THAN 44" ABOVE THE FLOOR. THE FORCE REQUIRED TO ACTIVATE THE CONTROLS SHALL BE NO GREATER THAN 5 POUNDS.
- ACCEPTABLE DEVICE/FIXTURE CONTROLS.** FAUCET CONTROLS OR OTHER OPERATING MECHANISMS SHALL BE OPERABLE WITH ONE HAND AND SHALL NOT REQUIRE TIGHT GRASPING, PINCHING OR TWISTING OF THE WRIST. THE FORCE REQUIRED TO ACTIVATE THE CONTROLS SHALL BE NOT GREATER THAN 5 POUNDS. NON-OPERATED PUSH TYPE ELECTRONICALLY CONTROLLED MECHANISMS ARE EXAMPLES OF ACCEPTABLE DESIGNS. SELF CLOSING VALVES ARE ALLOWED IF THE FAUCET REMAINS OPEN FOR AT LEAST 10 SECONDS.
- ELECTRICAL & MECHANICAL CONTROLS.** CONTROLS AND SWITCHES INTENDED TO BE USED BY OCCUPANT OF A ROOM OR AREA TO CONTROL LIGHTING AND RECEPTACLE OUTLETS, APPLIANCES OR HEATING & VENTILATING EQUIPMENT SHALL COMPLY WITH SECTION 118-308 EXCEPT THE LOW REACH SHALL BE MEASURED TO THE BOTTOM OF THE OUTLET BOX AND THE HIGH REACH SHALL BE MEASURED TO THE TOP OF THE OUTLET BOX. CBC-308.1.1 ELECTRICAL OUTLETS, SWITCHES, THERMOSTATS FIRE ALARMS & SIMILAR DEVICES SHALL BE LOCATED A MIN. OF 15" ABOVE THE FINISHED FLOOR, MEASURED AT THE BOTTOM OF THE BOX, & A MAX. OF 48" MEASURED TO THE TOP OF THE BOX.
- FLOOR FINISHES.** FLOOR SHALL BE SLIP RESISTANT.
- ENTRY SIGNAGE.** ALL DISABLE ACCESSIBLE ENTRANCES SHALL BE IDENTIFIED WITH AT LEAST ONE STANDARD SIGN AND WITH ADDITIONAL DIRECTIONAL SIGNS, AS REQUIRED, VISIBLE FROM APPROACHING PEDESTRIAN WAYS.



NORTH CAROLINA 50' SERIES

KB HOME
 NORTH CAROLINA DIVISION
 4518 S. MIAMI BLVD.
 SUITE 180
 DURHAM, NC 27703
 TEL: (919) 768-7988
 FAX: (919) 472-0582

2018 NORTH CAROLINA STATE BUILDING CODES

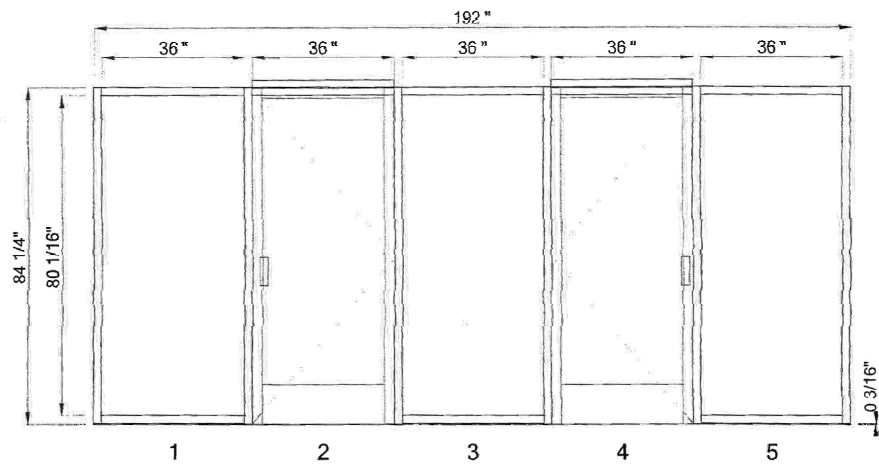
ISSUE DATE: 01/19/21
 PROJECT No.: 1350999:57
 DIVISION MGR.: DS
 REVISIONS:

PLAN:
150.1773-R

SHEET:
SO2-000 SO.2 SS&

SPEC. LEVEL 1
RALEIGH-DURHAM SALES OFFICE

These designs and drawings are CONFIDENTIAL, and the exclusive property of KB Home Corporation and are not to be disclosed without the express permission of KB Home Corporation. Copyright 2014 © KB Home Corporation. All rights reserved.



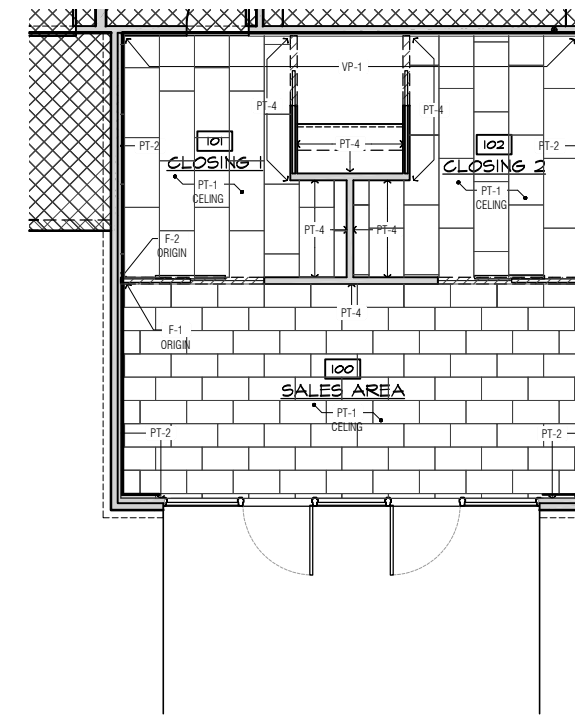
KB Home - 001 - Sales Office.dwg (1 Thus)
Frame: (BRONZE) ASL451 2 x 4 1/2 Screw In CG

STOREFRONT DETAIL

SCALE 1/4"=1'-0" (22"x34") - 1/8"=1'-0" (11"x17")

SALES OFFICE

| FINISH SCHEDULE | | | | |
|-----------------------|---------------------------------|---|---|--------------------------------|
| KEY | MATERIAL | MANUFACTURER | DESCRIPTION | GENERAL LOCATION |
| FLOOR FINISHES | | | | |
| F-1 | TILE | EMSER TILE www.emser.com | SERIES: UPTOWN COLOR: HUDSON SIZE: 12"x24"x3/8" SET: RUNNING BOND TO/BO GROUT JOINT: 1/8"; USE WITH G-1; REFER TO PLAN FOR TILE START POINT | SALES AREA |
| F-2 | CARPET TILE | SHAW CONTRACT GROUP www.shawcontractgroup.com | STYLE: 54204 URBAN GEOMETRY; COLOR: 04500 (MINGLEED MUSE) SIZE: 18"x36" SET: ASHLAR; REFER TO PLAN FOR START POINT | CLOSING OFFICES & COPY |
| GROUT FINISHES | | | | |
| G-1 | GROUT | CUSTOM BUILDING PRODUCTS | SERIES: CEMENT GROUT PRODUCT: PRISM ULTIMATE PERFORMANCE GROUT COLOR: 185 (NEW TAUPE) | SALES AREA |
| BASE FINISHES | | | | |
| B-1 | WOOD BASE | N/A | 1X3 FINGER JOINT PINE, SQUARE EDGE, PRIME AND PAINT; USE PT-3 | ALL |
| WALL FINISHES | | | | |
| W-1 | GYPSUM WALLBOARD | GEORGIA PACIFIC OR EQUAL | TOUGHRock GYPSUM WALLBOARD, LEVEL 4 FINISH | ALL AREAS AS NOTED ON PLANS |
| PAINT FINISHES | | | | |
| PT-1 | PAINT | SHERWIN WILLIAMS | COLOR: SW7021 (SIMPLY WHITE); FINISH: FLAT | ALL CEILINGS |
| PT-2 | PAINT | SHERWIN WILLIAMS | COLOR: SW7103 (WHITETAIL) FINISH: FLAT | AS NOTED ON PLAN |
| PT-3 | PAINT | SHERWIN WILLIAMS | COLOR: SW7103 (WHITETAIL) FINISH: SEMI-GLOSS | AS NOTED ON PLAN |
| PT-4 | PAINT | SHERWIN WILLIAMS | COLOR: SW7513 (SANDERLINS); FINISH: FLAT | AS NOTED ON PLAN |
| PT-5 | PAINT | SHERWIN WILLIAMS | COLOR: SW6250 (BLACK) FINISH: EGGSHELL | AS NOTED ON PLAN |
| MISC. FINISHES | | | | |
| VP-1 | VINYL PANELING | SHAW CONTRACT GROUP www.shawcontractgroup.com | RESTO PLUS; VE217 COLOR - 00144 (MAJESTIC); SET HORIZONTAL RANDOM PATTERN; END JOINTS TO BE CUT SQUARE TO THE WALL; CAULK END TO WALL. | AS NOTED ON PLAN |
| TS-1 | FLOORING TRANSITION STRIP | SCHLUTER SYSTEMS www.schluter.com | RENO-TK; HEIGHT: 3/8"; FINISH: ATK100AB6B (BRUSHED ANTIQUE BRONZE ANODIZED ALUM.) | AS NOTED ON PLAN |
| MM-1 | DOOR TRIM | N/A | 1X FINGER JOINT PINE, SQUARE EDGE, PRIME AND PAINT; USE PT-3 | REFER TO PLAN FOR SIZE |



FLOOR FINISH PLAN

SCALE 1/4"=1'-0" (22"x34") - 1/8"=1'-0" (11"x17")

SALES OFFICE



**NORTH CAROLINA
50' SERIES**

KB HOME
NORTH CAROLINA DIVISION

4518 S. MIAMI BLVD.
SUITE 180
DURHAM, NC 27703
TEL: (919) 768-7988
FAX: (919) 472-0582

**2018 NORTH
CAROLINA STATE
BUILDING
CODES**

ISSUE DATE: 01/19/21
PROJECT No.: 1350999:57
DIVISION MGR.: DS
REVISIONS:

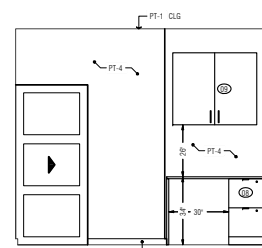
SALES OFFICE INTERIOR ELEV. NOTES

1. CREDENZA
2. FLOATING SHELF FOR TOUCHPADS
3. BENCH SEATING WITH STORAGE
4. RESERVED
5. RESERVED
6. RESERVED
7. RESERVED
8. CLOSING OFFICE WORKSTATION
9. UPPER CABINET OVER WORKSTATION
10. TOUCHSCREEN MONITOR
11. COPIER
12. UNDERCABINET REFRIGERATOR
13. (2) 18" DEEP SHELVES FOR MICRO AND DMX UNIT
14. UPPER CABINET
15. WATER COOLER

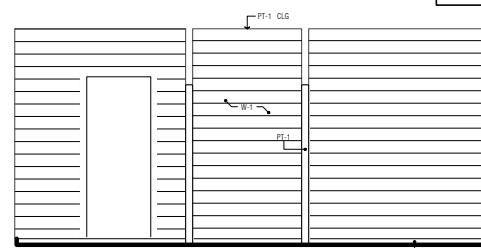
NOTE:
SEE SALES OFFICE INSTALL BOOK FOR SPECIFIC REQUIREMENTS.
INSTALL 1X6 BASE BOARD IN THE ENTIRE SALES OFFICE.
REFER TO THE PRODUCTION ELEVATIONS FOR INFORMATION NOT
SHOWN HERE.
ADD 2X BLOCKING FOR TV BRACKET AND FLOATING SHELF

GRAPHICS PACKAGE NOTES

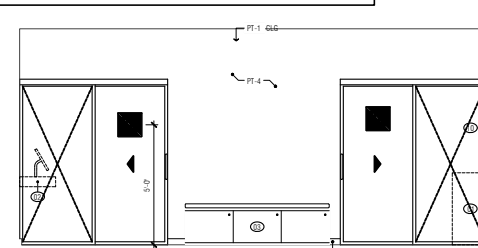
NOTE:
GRAPHICS FILES ARE PROVIDED BY CORPORATE MARKETING,
TO BE PRINTED AND MOUNTED LOCALLY.
GRAPHICS, FURNITURE, TECHNOLOGY, MATERIALS, COLORS,
FINISHES, ACCESSORIES - SEE SALES OFFICE 2.0 INSTALL GUIDE



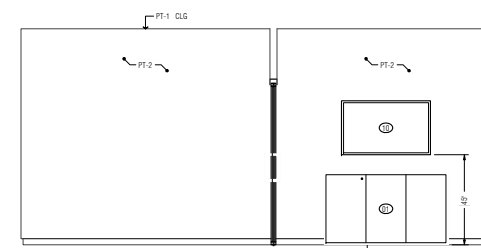
CLOSING OFFICE 1
WORKSTATION WALL (OFFICE 2 SIM.)



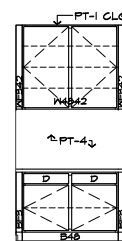
CLOSING OFFICE1 / COPY / CLOSING OFFICE 2
VINYL PLANK ACCENT WALL



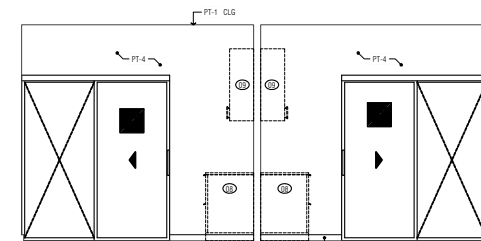
LOBBY
PHOTO GALLERY



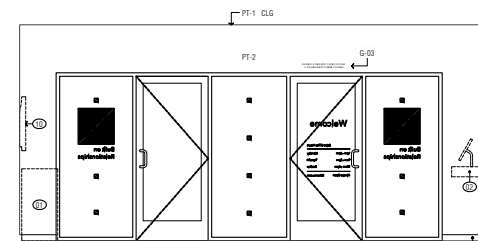
LOBBY
CREDENZA WALL



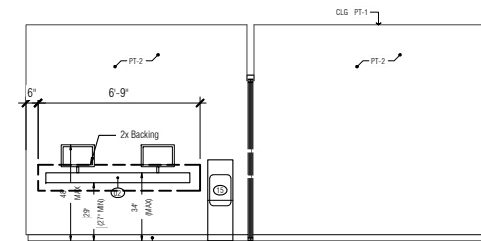
COPY



CLOSING OFFICE 2 / CLOSING OFFICE 1
ENTRY WALL



LOBBY
STOREFRONT ENTRY



LOBBY
TABLET SHELF WALL

INTERIOR ELEVATIONS

SCALE 1/4"=1'-0" (22"x34") - 1/8"=1'-0" (11"x17")

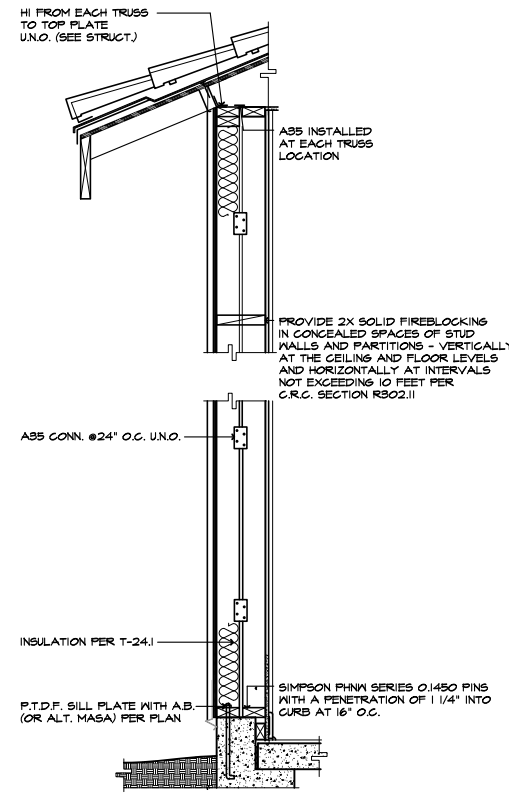
SALES OFFICE

PLAN:
150.1773-R

SHEET:
SO3-FINISHES SO3 INT ELEV

**SPEC. LEVEL 1
RALEIGH-DURHAM
SALES OFFICE**

These designs and drawings are CONFIDENTIAL, and the exclusive property of KB Home Corporation and are not to be disclosed without the express permission of KB Home Corporation. Copyright 2014 © KB Home Corporation, all rights reserved.



TYPICAL EXTERIOR WALL
SCALE 1/4"=1'-0"
SALES OFFICE **11**

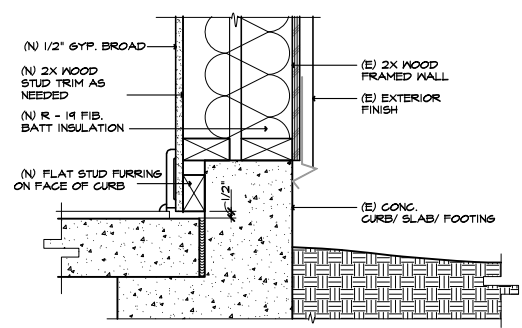
NOT USED **10**



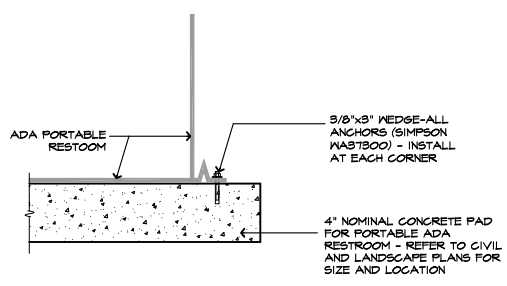
The International Symbol of Accessibility shall comply with Figure 11B-703.7.2.1. The symbol shall consist of a white figure on a blue background. The blue shall be FS 15090 in Federal Standard 595C

FIGURE 11B-703.7.2.1 INTERNATIONAL SYMBOL OF ACCESSIBILITY (ISA)

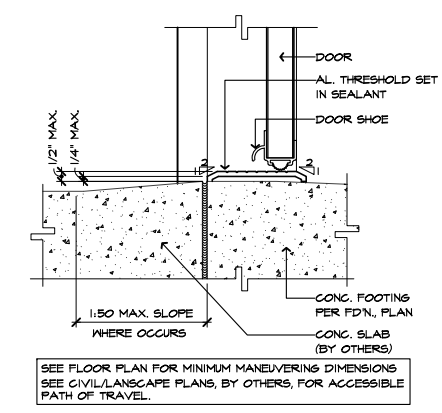
ACCESSIBILITY SIGNAGE
SCALE: NONE
SALES OFFICE **13**



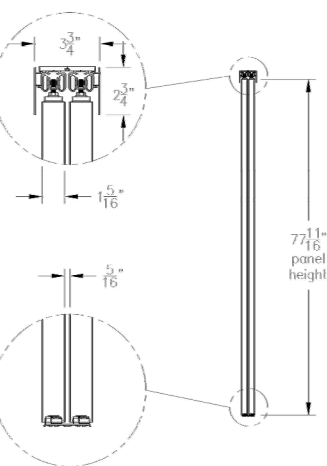
FURRED WALL AT CURB
SCALE 2"=1'-0"
SALES OFFICE **9**



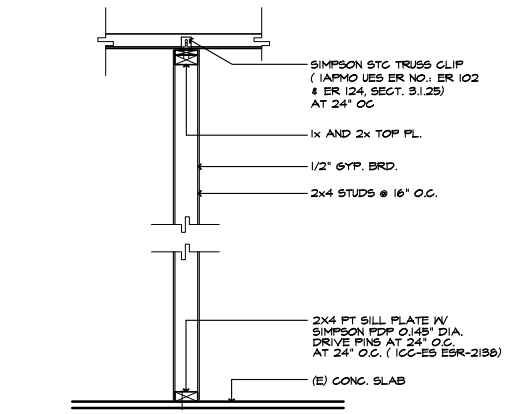
ADA RESTROOM ANCHORS
SCALE: NONE
SALES OFFICE **12**



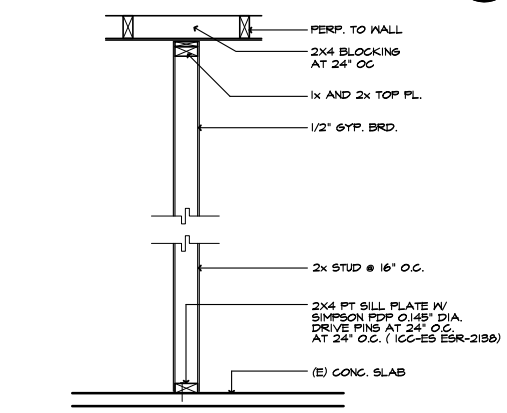
THRESHOLD
SCALE 1/4"=1'-0"
SALES OFFICE **1**



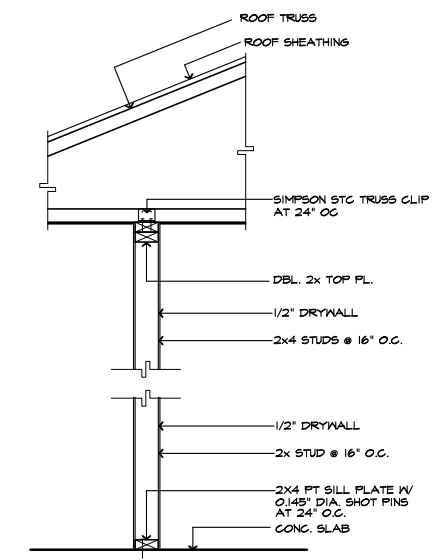
STORE FRONT WINDOW
SCALE N.T.S.
SALES OFFICE **14**



NON-BRG. INT. WALL "A"
SCALE 1/4"=1'-0"
SALES OFFICE **7**



NON-BRG. INT. WALL "B"
SCALE 1/4"=1'-0"
SALES OFFICE **8**



NON-BRG. INT. WALL
SCALE 1/4"=1'-0"
SALES OFFICE **4**



NORTH CAROLINA 50' SERIES

KB HOME
NORTH CAROLINA DIVISION
4518 S. MIAMI BLVD.
SUITE 180
DURHAM, NC 27703
TEL: (919) 768-7988
FAX: (919) 472-0582

2018 NORTH CAROLINA STATE BUILDING CODES

ISSUE DATE: 01/19/21
PROJECT No.: 1350999:57
DIVISION MGR.: DS
REVISIONS:

PLAN: **150.1773-R**
SHEET: **150 AD 1 ES**
SPEC. LEVEL 1
RALEIGH-DURHAM
SALES OFFICE

These designs and drawings are CONFIDENTIAL, and the exclusive property of KB Home Corporation and are not to be disclosed without the express permission of KB Home Corporation. They may not be used or duplicated without the express permission of KB Home Corporation. Copyright 2014 © KB Home Corporation, all rights reserved.