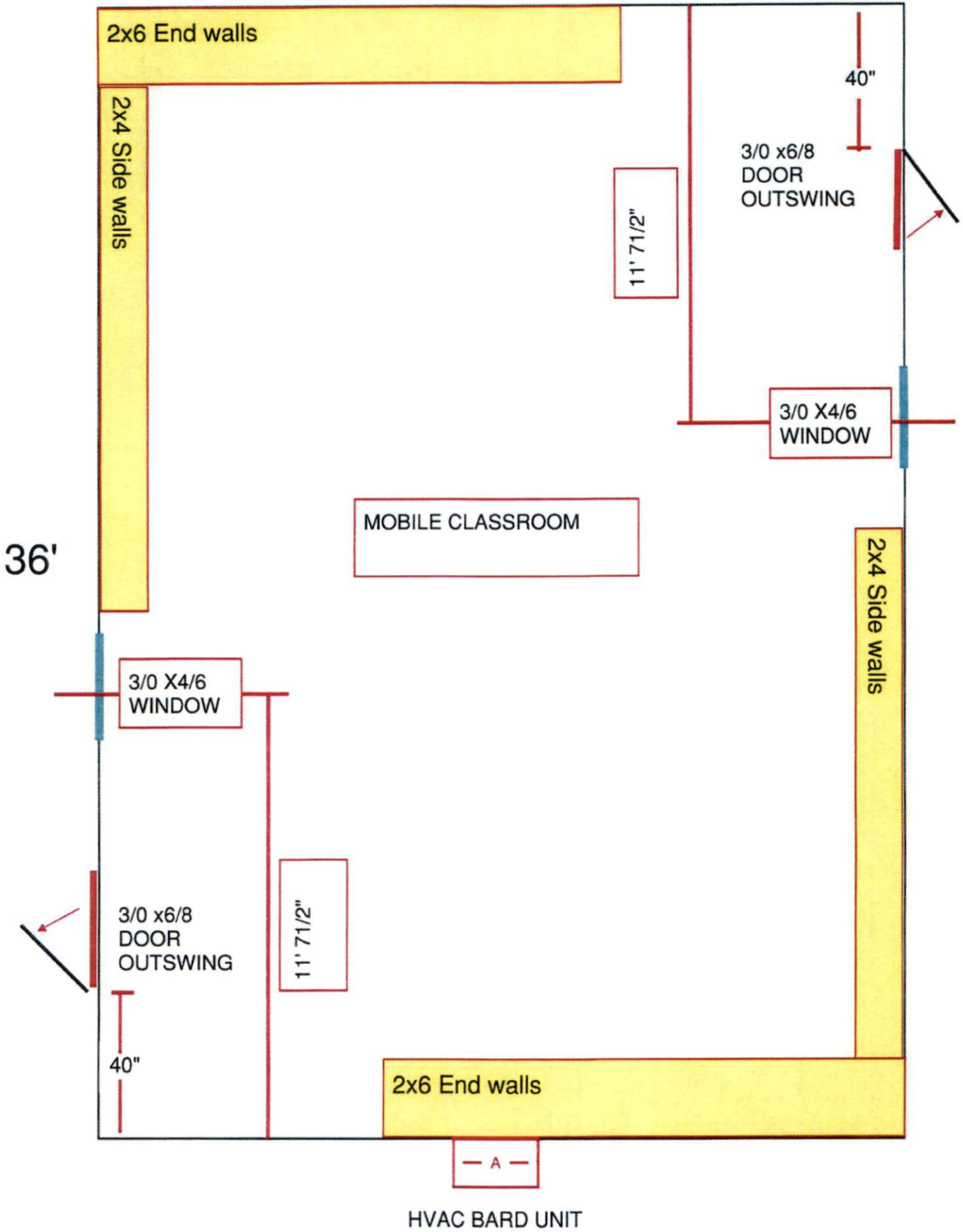




24'



36'

2x6 End walls

2x4 Side walls

11' 7 1/2"

3/0 x6/8  
DOOR  
OUTSWING

40"

3/0 X4/6  
WINDOW

MOBILE CLASSROOM

2x4 Side walls

3/0 X4/6  
WINDOW

3/0 x6/8  
DOOR  
OUTSWING

40"

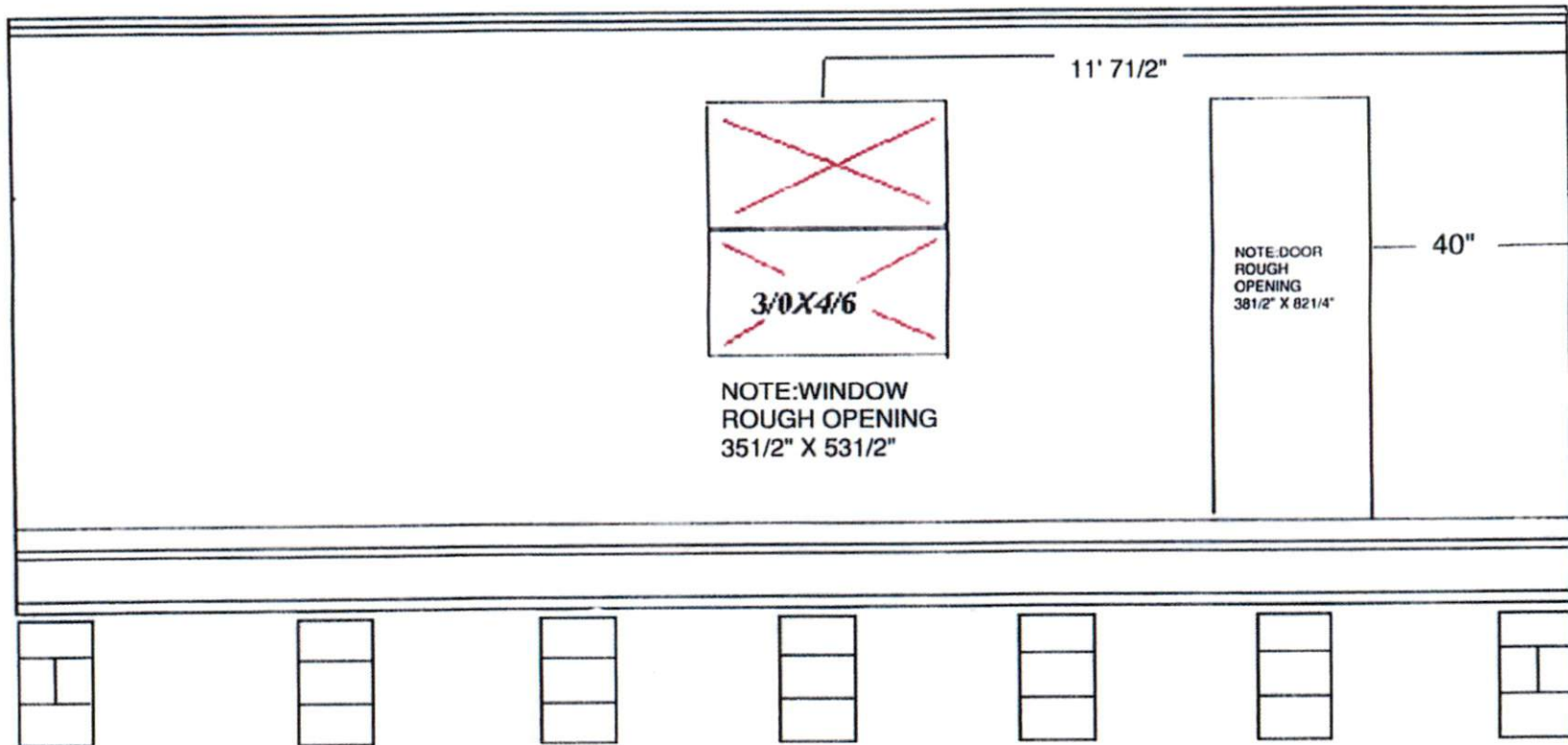
11' 7 1/2"

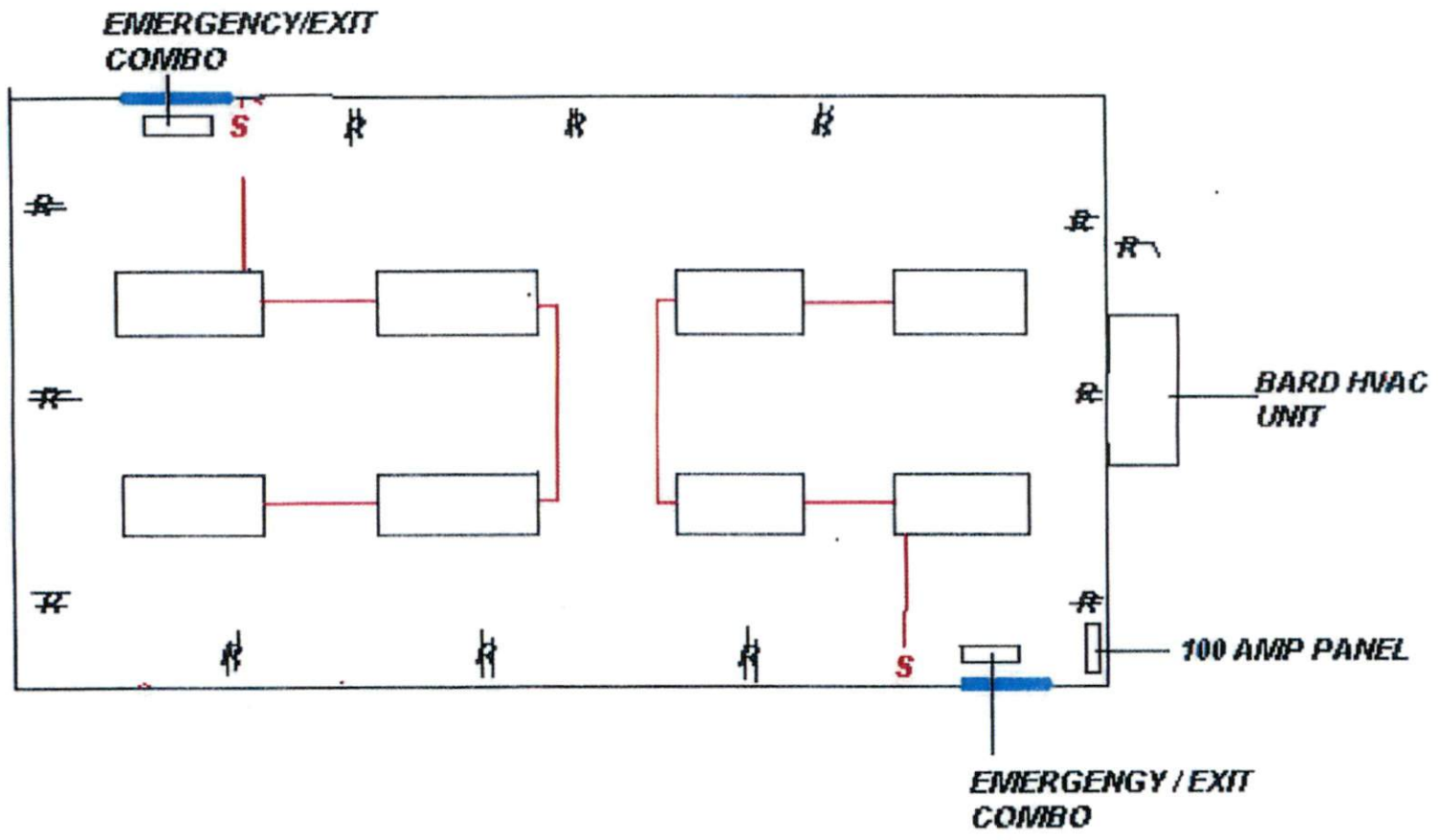
2x6 End walls

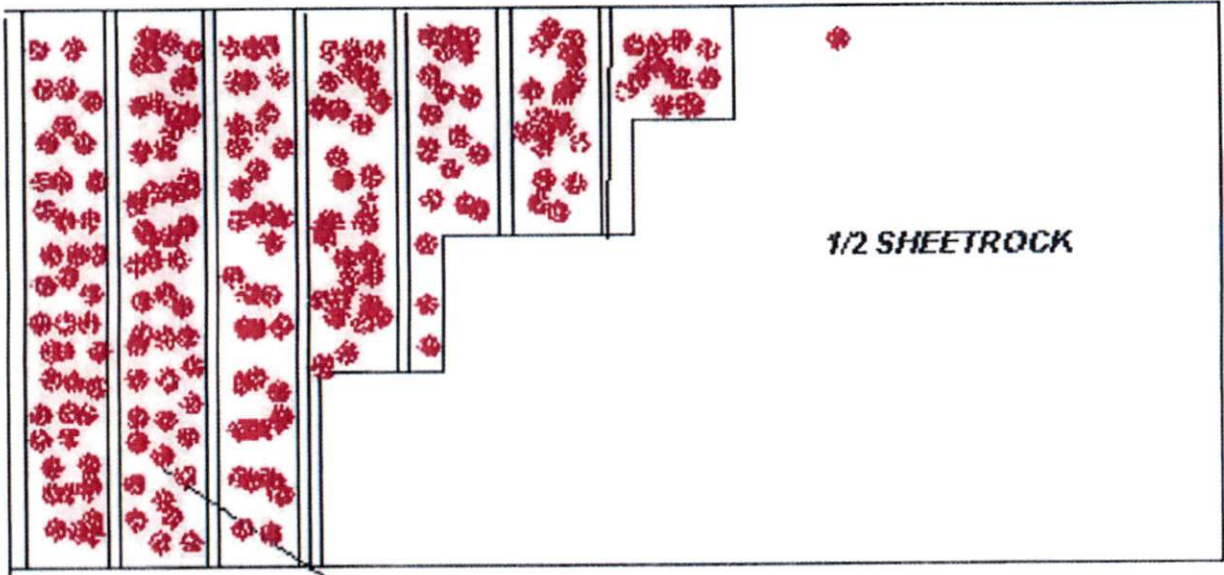
- A -

HVAC BARD UNIT

# OUTSIDE WALL DETAILS







*1/2 SHEETROCK*

*R-15 INSULATION*

