



CONSTRUCTION DOCUMENTS



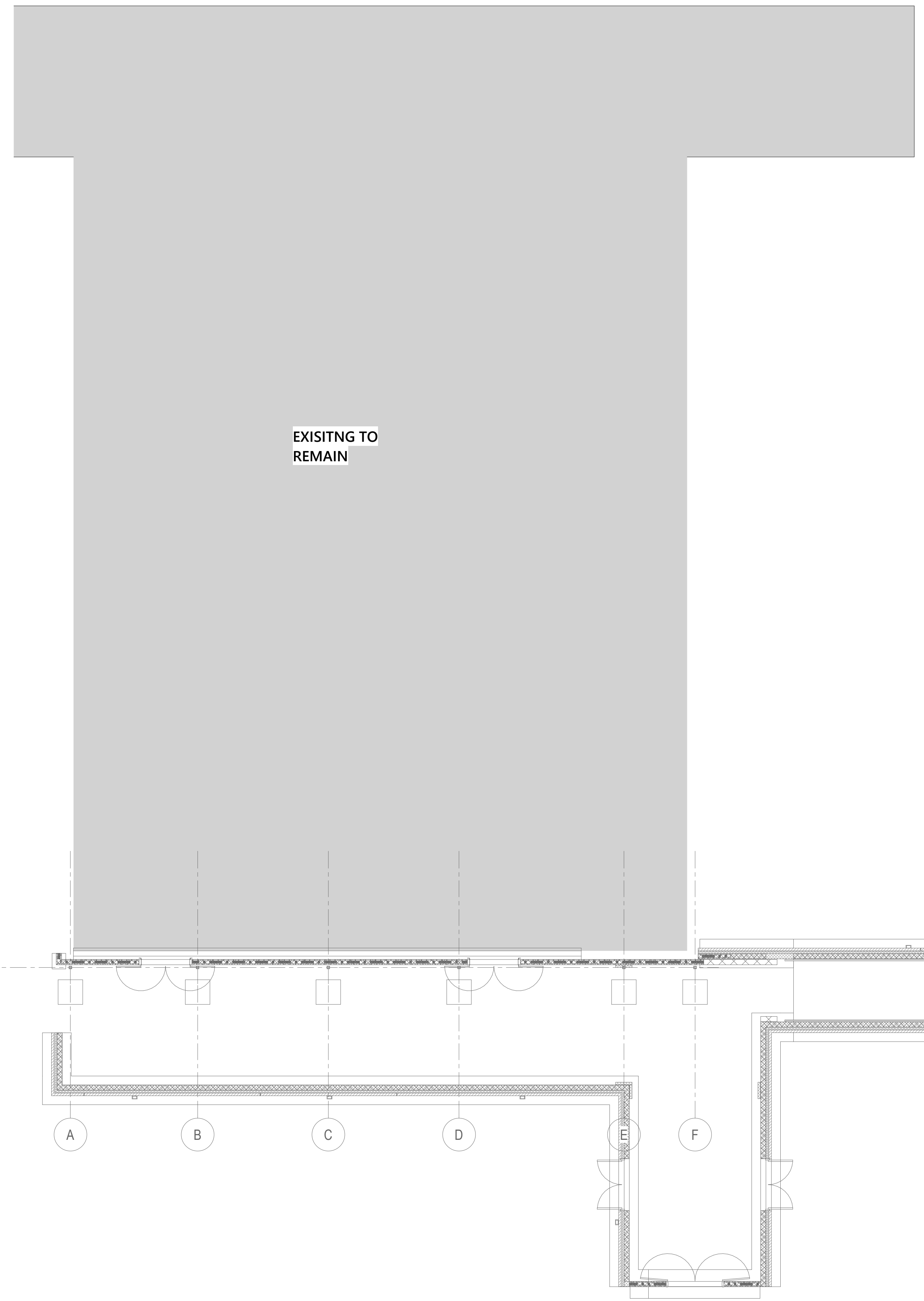
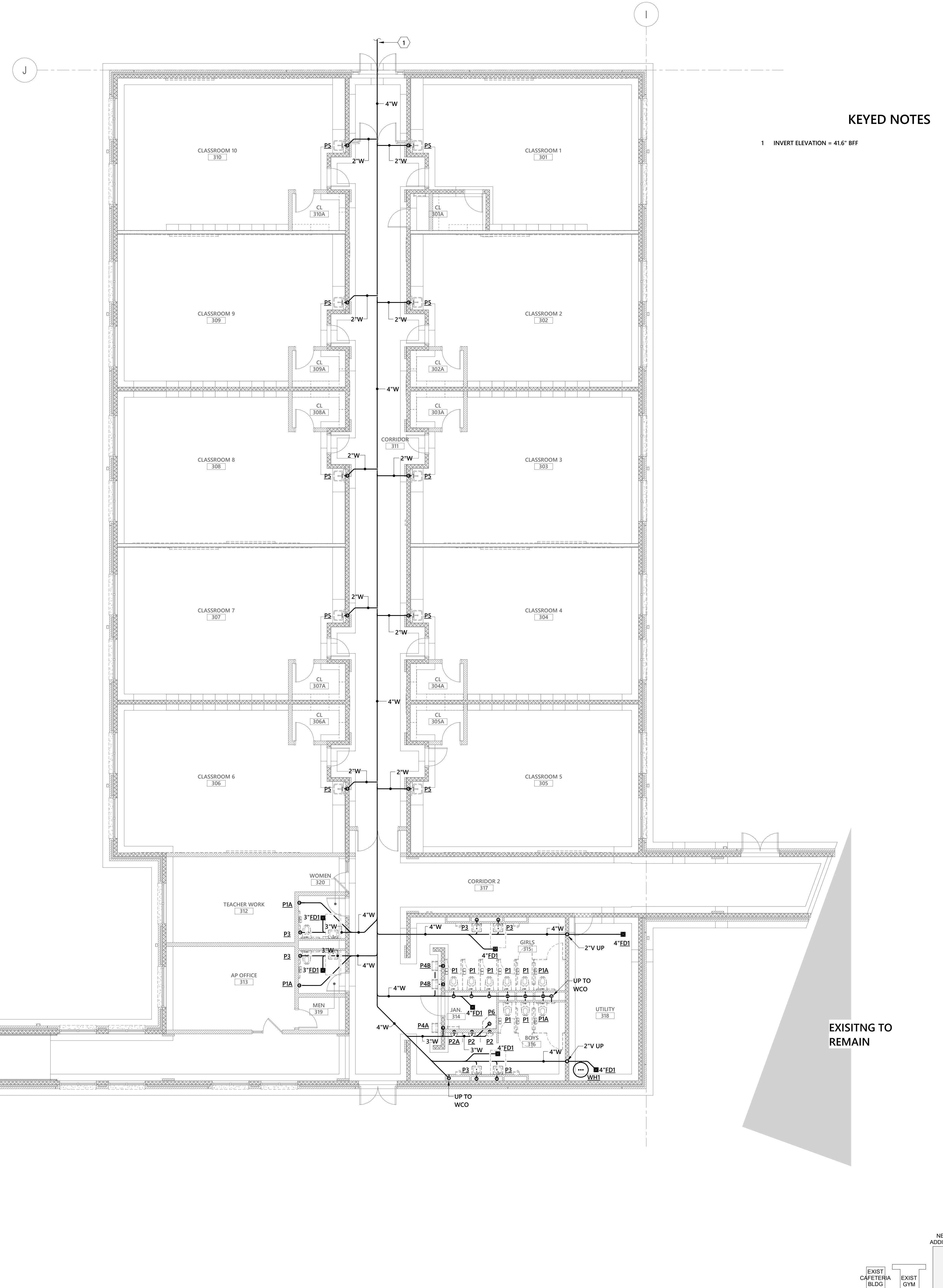
Hamett County Schools
**Johnsonville Elementary School
Addition/Renovation Phase 2**
18495 NC-27, Cameron, NC 28326



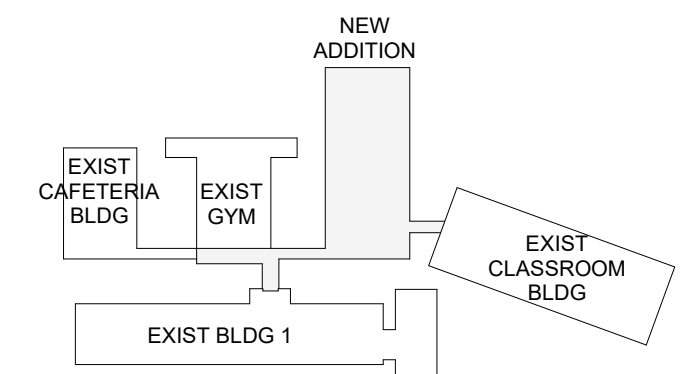
No.	Date	Description

ISSUE DATE: 01/28/2022
PROJECT #: 02103.000
DRAWN BY: CAW
CHECKED BY: ESD
© 2021 Sfl+a Architects, PA
All Rights Reserved

PLUMBING
UNDERSLAB WASTE



EXISTING TO REMAIN



KEYPLAN

1 FIRST FLOOR UNDERSLAB WASTE PLAN - PHASE 2
1/8" = 1'-0"

1/28/2022 11:16:40 AM Autodesk Docs://Johnsonville ES Addition Renovation/21-0266R_Johnsonville Classroom Addition_MEPPP_022.rvt

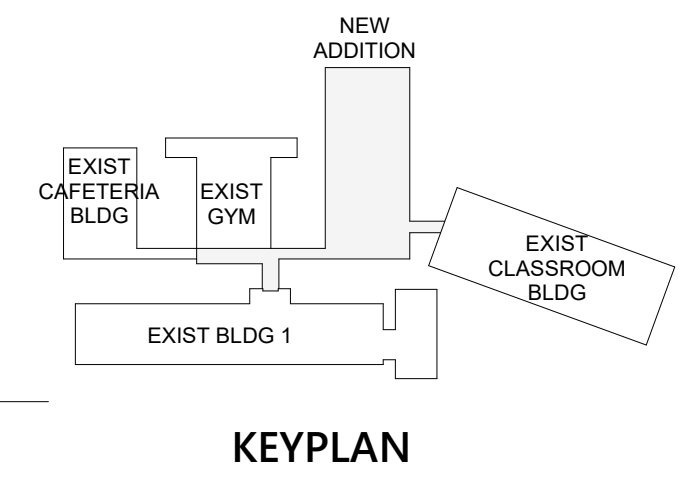
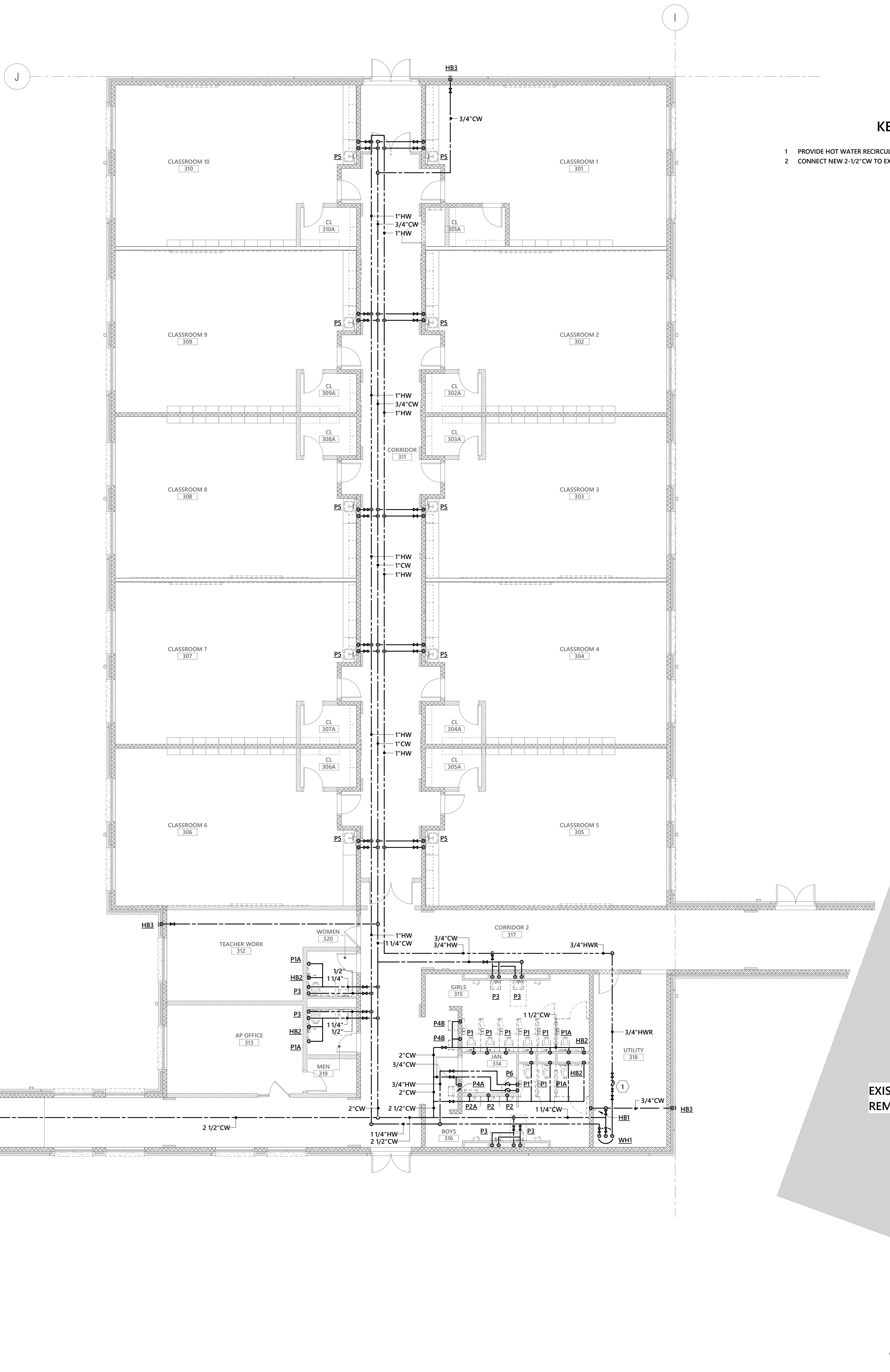
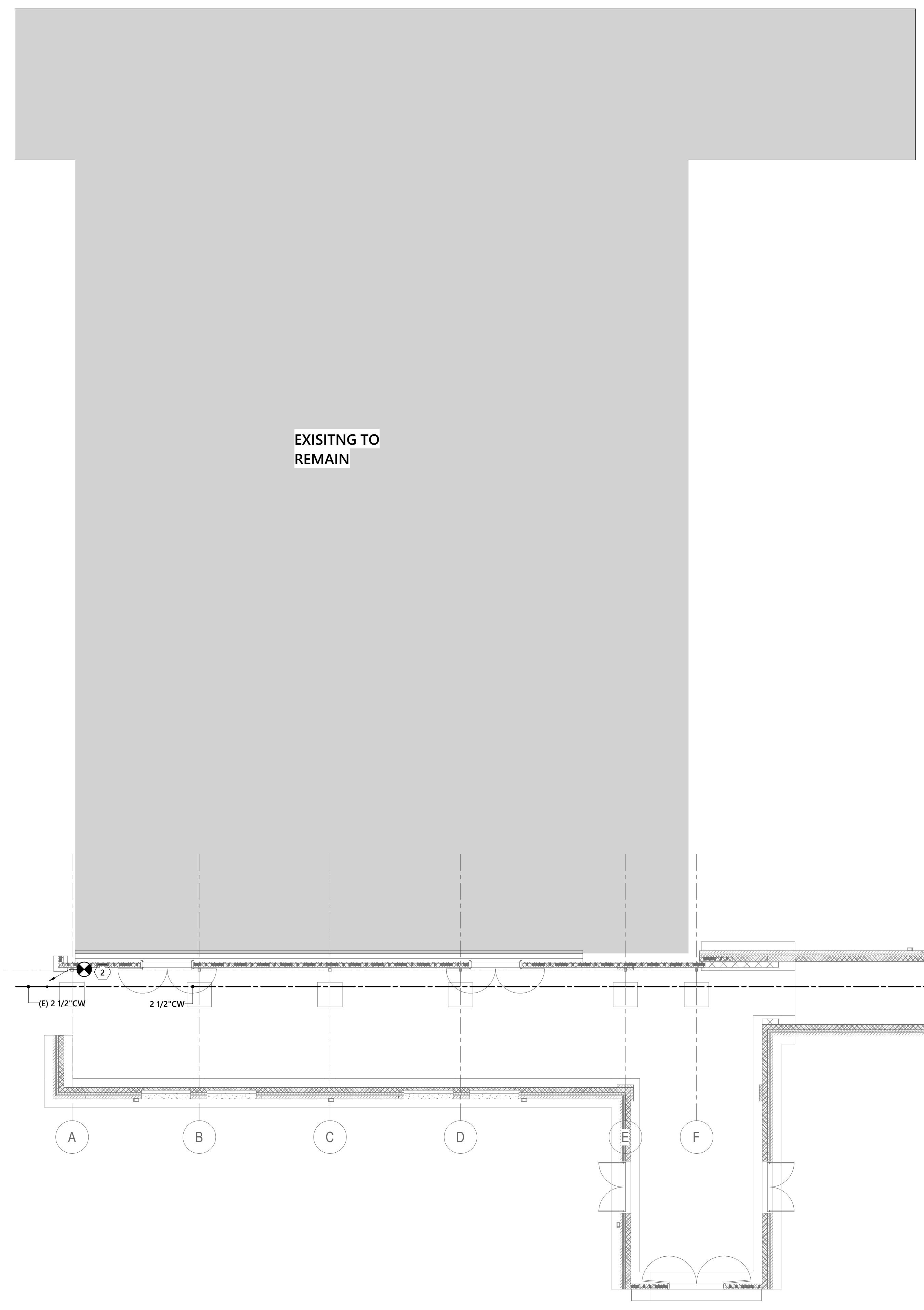
No.	Date	Description

ISSUE DATE: 01/28/2022
PROJECT #: 02103.000
DRAWN BY: CAW
CHECKED BY: ESD
© 2021 Sfl+a Architects, PA
All Rights Reserved

PLUMBING WATER
SUPPLY

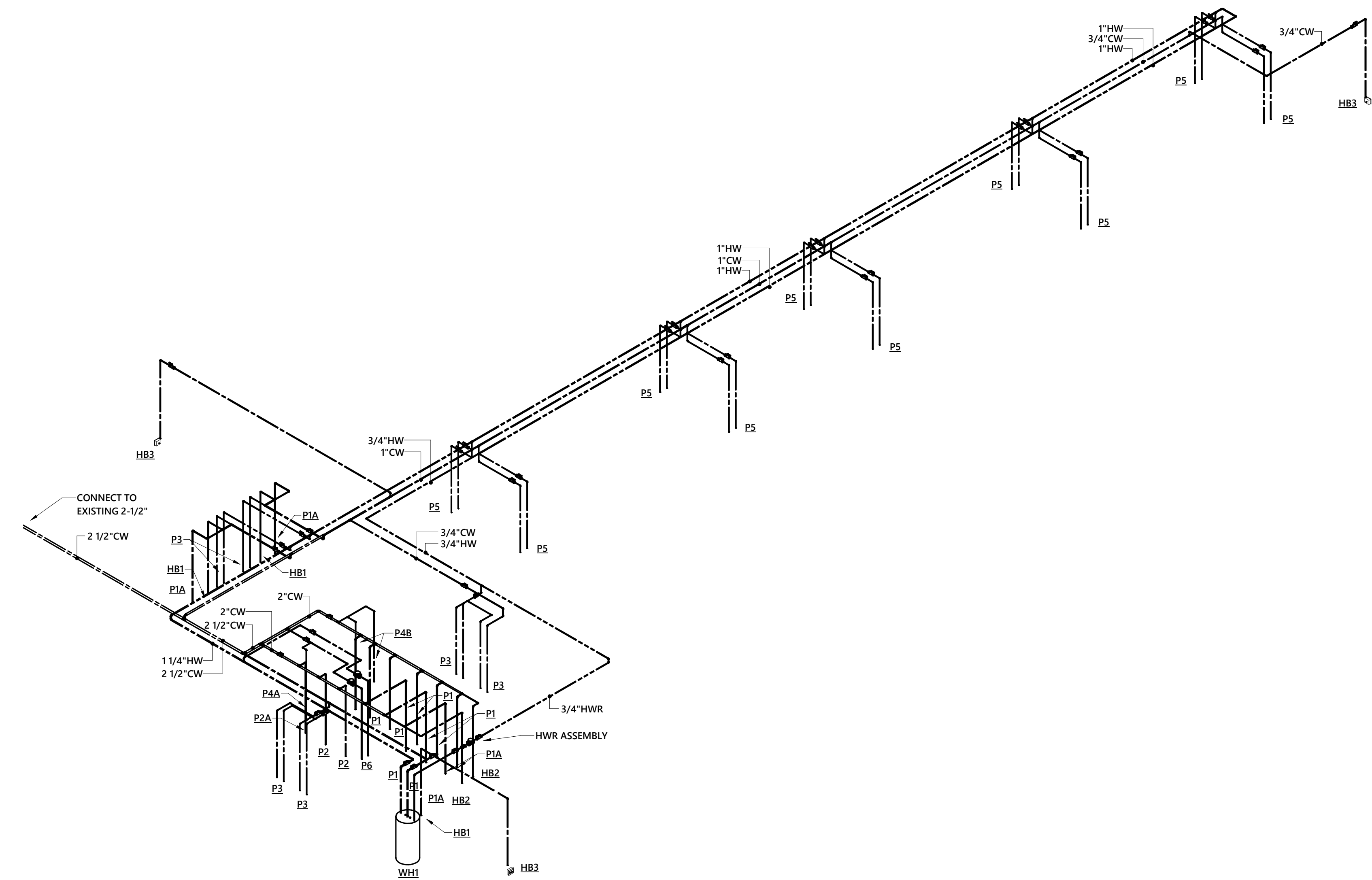
KEYED NOTES

- 1 PROVIDE HOT WATER RECIRCULATION ASSEMBLY AND SET TO 1.0 GPM.
- 2 CONNECT NEW 2-1/2" CW TO EXISTING 2-1/2" CW IN CORRIDOR CEILING SPACE.

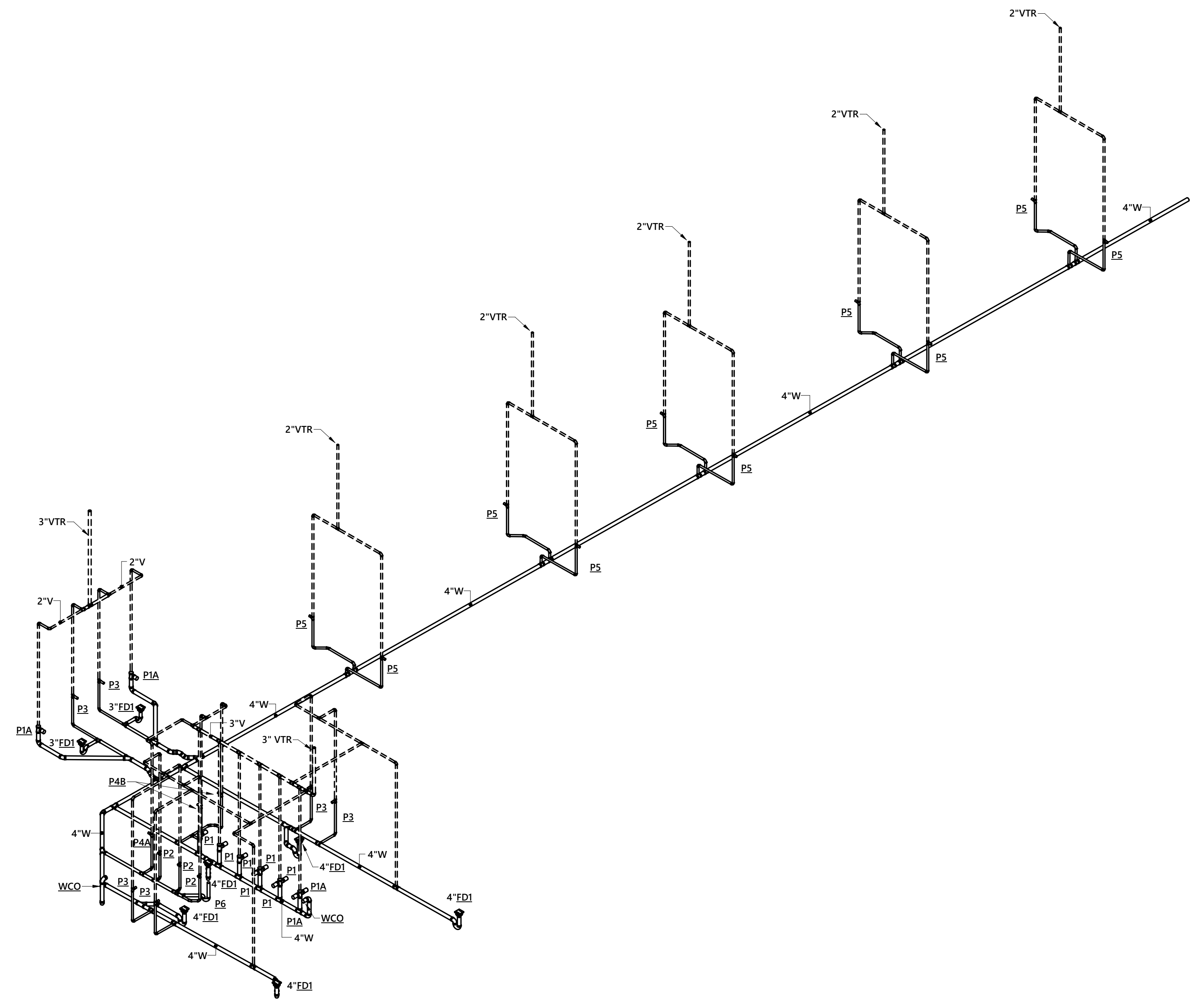


1 FIRST FLOOR WATER SUPPLY PLAN - PHASE 2
1/8" = 1'-0"

1/28/2022 11:16:53 AM Autodesk Docs://Johnsonville ES Addition Renovation/21-0266R_Johnsonville Classroom Addition_MEPPP_022.rvt



1 PLUMBING RISER DIAGRAM - WATER SUPPLY
NOT TO SCALE



2 PLUMBING RISER DIAGRAM - WASTE AND VENT

...Becoming the
Leading Designer of
High Performance Facilities
in the Nation with a
Specialty in Alternative
Delivery Methods

333 Fayetteville St, Ste 225
Raleigh, NC 27601
P: 919-573-4350
F: 919-573-4355
www.sfl+a.com



CONSTRUCTION
DOCUMENTS



150 Fayetteville St., Suite 520, Raleigh, NC 27601
1827 South Tryon St., Suite 300, Charlotte, NC 28203
Phone: 919-825-2200 www.optimaengineering.com
North Carolina License Number C-0914

Hammett County Schools
**Johnsonville Elementary School
Addition/Renovation Phase 2**
18495 NC-27, Cameron, NC 28326



No.	Date	Description

ISSUE DATE: 01/28/2022
PROJECT #: 02103.000
DRAWN BY: CAW
CHECKED BY: ESD
© 2021 SFL+a Architects, PA
All Rights Reserved

PLUMBING RISER
DIAGRAMS

P1-401
Sheet No. 6 of 7

1/28/2022 11:16:55 AM Autodesk Docs://Johnsonville ES Addition Renovation/21-0266R_Johnsonville Classroom Addition_MEPPF_022.rvt

