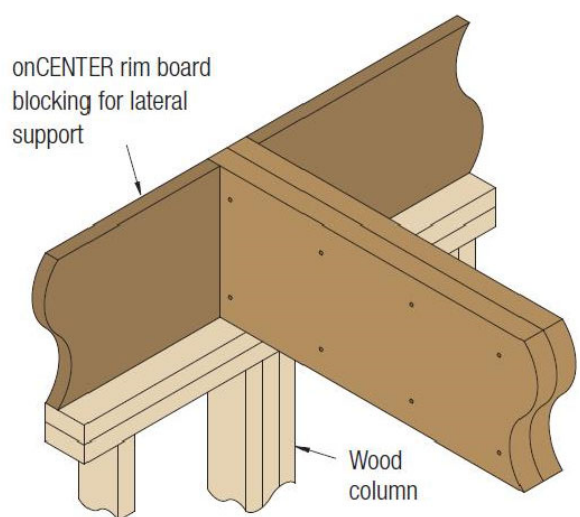
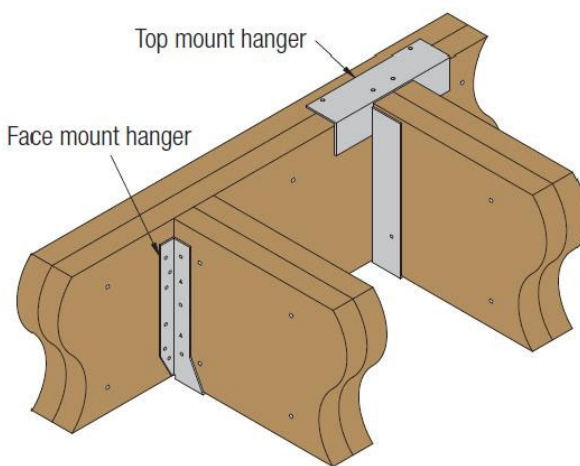


**B1 BEARING ON WALL**

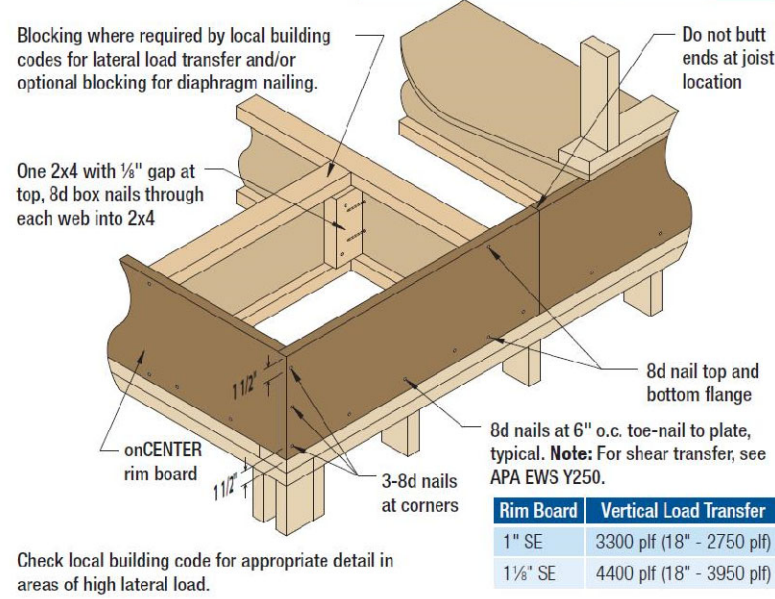


**B3 BEAM-TO-BEAM CONNECTION**



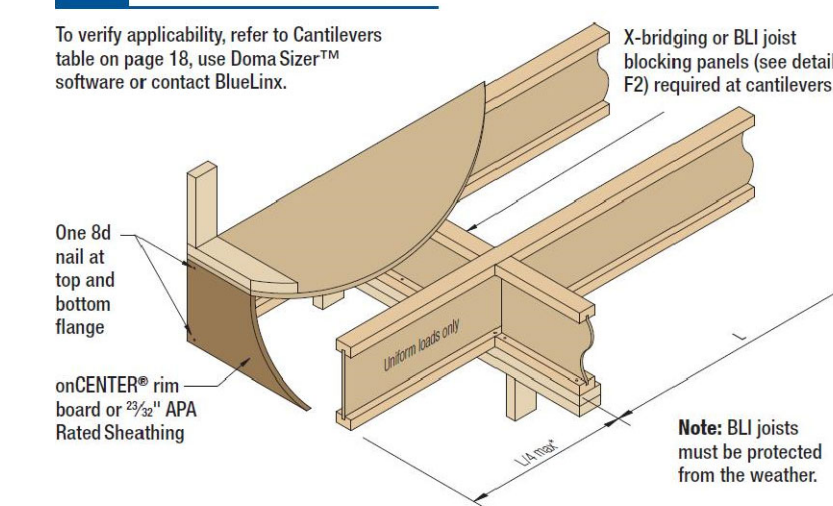
Install hangers per hanger manufacturer's instructions.

**onCENTER® RIM BOARD CLOSURE F5**

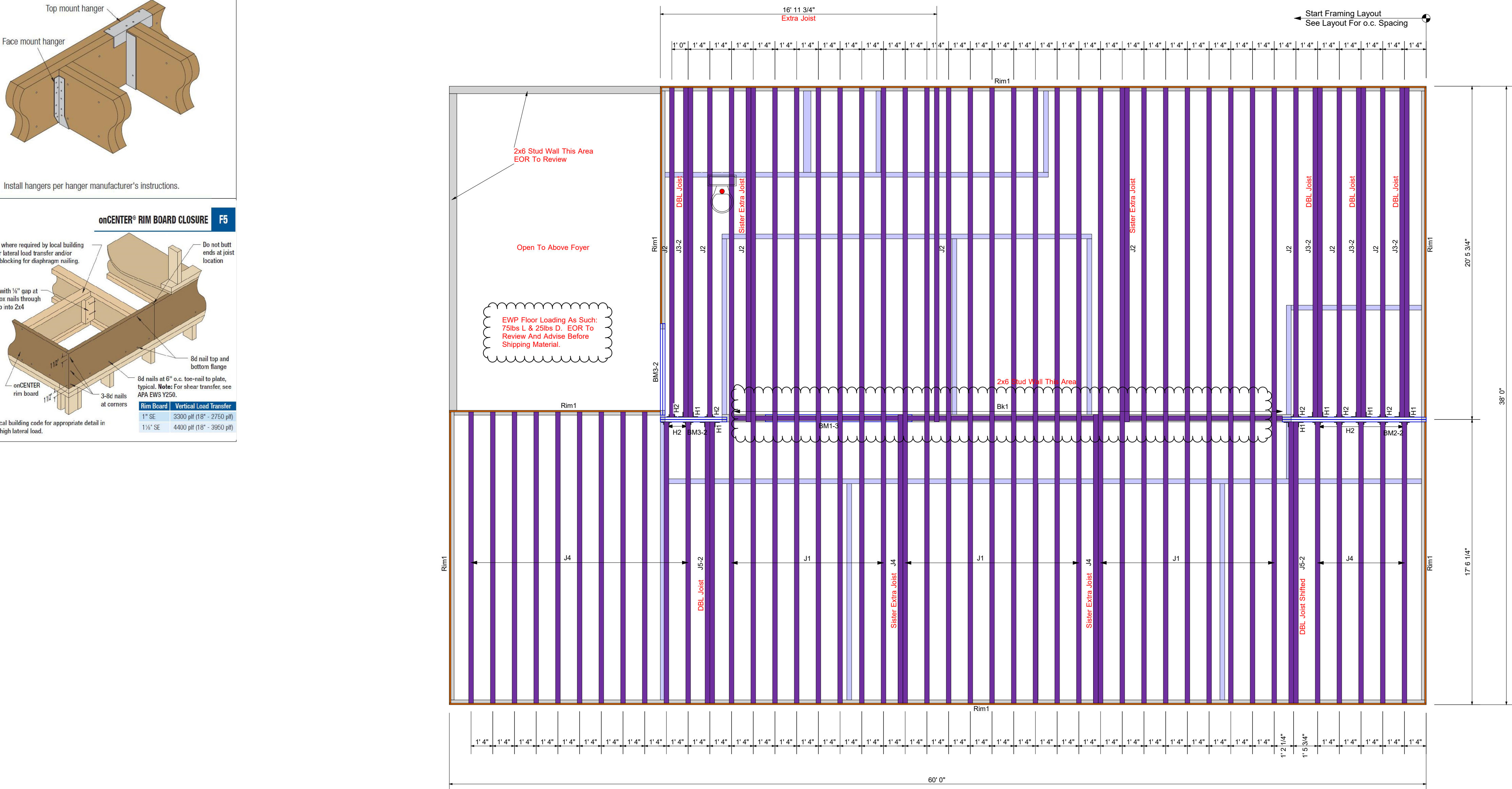


Check local building code for appropriate detail in areas of high lateral load.

**C1 CANTILEVER, UNREINFORCED**



To verify applicability, refer to Cantilevers table on page 18, use DomaSizer™ software or contact BlueLinX.  
 \*Cantilever length must not exceed 1/4 the adjacent span (L). Nor may it exceed:  
 a) 2'-0" (if end of cantilever supports wall/roof loads)  
 b) 4'-0" (if no loads are placed on end of cantilever)  
 For other conditions contact BlueLinX.



PlotID	Qty	Manuf	Product
H1	6	USP	HBR47116
H2	12	USP	THF35157
H1*	6	Simpson	HB7.12/16"
H2*	12	Simpson	IUS3.56/16"

PlotID	Length	Product	Plies	Net Qty
J1	38' 0"	BLI 65 16"	1	26
J2	22' 0"	BLI 65 16"	1	8
J3-2	22' 0"	BLI 65 16"	2	8
J4	18' 0"	BLI 65 16"	1	18
J5-2	18' 0"	BLI 65 16"	2	4
BM1-3	10' 0"	onCENTER® LVL 2.0E 1 3/4" x 11 7/8"	3	2
BM2-2	10' 0"	onCENTER® LVL 2.0E 1 3/4" x 16"	2	2
BM3-2	6' 0"	onCENTER® LVL 2.0E 1 3/4" x 16"	2	4
Rim1	12' 0"	onCENTER® Rim SE 1 1/8" x 16"	1	16
Bk1	28' 0"	BLI 65 16"	1	1

**Framer Notes:**  
 \*First Floor I-Joists Painted - Green (Verde)  
 (Primer piso I-vigas pintadas de verde.)  
 \*Second Floor I-Joists Painted - Blue (Azul)  
 (Vigas en el segundo piso pintadas de azul.)  
 \*Third Floor I-Joists Painted - Red (Rojo)  
 (Tercer piso I-vigas pintadas de rojo.)

**HVAC Hole Notes:**  
 Field Trim Non Red End To Keep Holes Aligned  
 (Cortar el lado sin marca rojo para alinear los hoyos.)

**Framer Notes:**

I-Joist & Beam Cut Sheets Are Attached To Layout. I-Joist Lengths Vary. See Example Of I-Joists Drawing On Layout.

ALL Blocking Material Will Be Painted BLACK / Labeled. Framer To Use That Material ONLY For Blocking Area's That Are Labeled Bk# On The I-Joist Layout.

1-Extra I-Joist And 1-Extra Rim-Board Have Been Provided For The Framers Use As Needed.

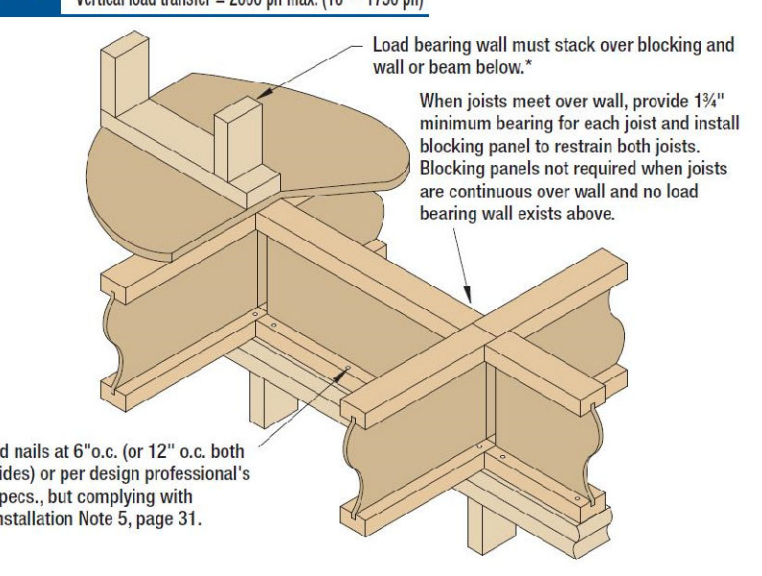
**Notas del enmarcador:**

Las hojas de corte I-Joist y Beam están adjuntas al diseño. Las longitudes de I-Joist varían, vea el ejemplo de I-Joist que se basa en el diseño.

Todo el material de bloqueo será pintado NEGRO / Etiquetado. Framer utiliza ese material SOLAMENTE para el área de bloqueo que está etiquetada como Bk # en el diseño de I-Joist.

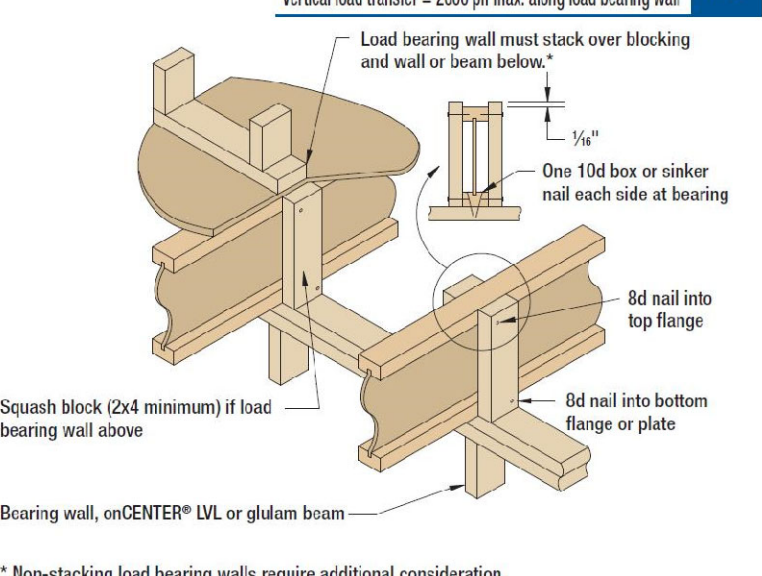
1-Extra I-Joist y 1-Extra Rim-Board han sido provistos para el uso de Framers según sea necesario.

**F9 BLOCKING PANEL, INTERIOR**



\* Non-stacking load bearing walls require additional consideration.

**F10 SQUASH BLOCKS AT INTERIOR BEARING**

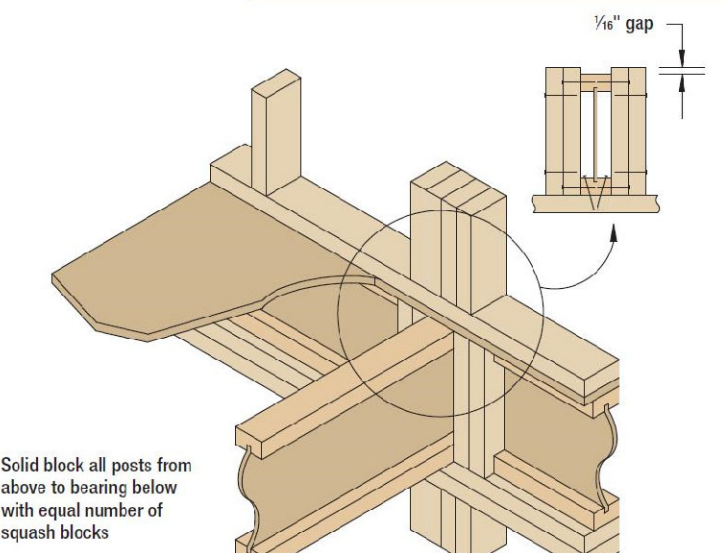


\* Non-stacking load bearing walls require additional consideration. Check local building code for appropriate detail in areas of high lateral load.

**F11 DOUBLE JOIST CONSTRUCTION WITH FILLER**

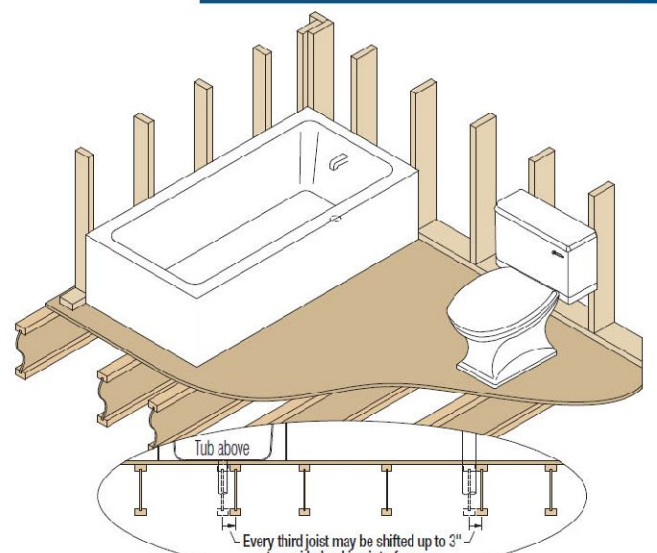
Span	Depth	Regular I-Joist Blocking (Detail F10)	Full-depth I-Joist Blocking (Detail CA 13.1 (1.8.8.8))
81, 70e	11 1/2"	2x6 + 1" OSP/Panel	2x6 + 1" OSP/Panel
	14"	2x4 + 1" OSP/Panel	2x4 + 1" OSP/Panel
	16"	2x4 + 1" OSP/Panel	2x4 + 1" OSP/Panel
81, 40	9 1/2"	2x4 + 1" OSP/Panel	2x4 + 1" OSP/Panel
81, 40, 60	11 1/2"	2x4 + 1" OSP/Panel	2x4 + 1" OSP/Panel
	14"	2x4 + 1" OSP/Panel	2x4 + 1" OSP/Panel
	16"	2x4 + 1" OSP/Panel	2x4 + 1" OSP/Panel
81, 80, 90, 90	11 1/2"	2x4	2x4
	14"	2x4	2x4
	16"	2x4	2x4
81, 80, 90	9 1/2"	2x4	2x4

**F12 SQUASH BLOCKS AT CONCENTRATED LOADS**



Solid block all posts from above to bearing below with equal number of squash blocks

**P2 JOIST SPACING BELOW PLUMBING FIXTURES**



May not be appropriate for some sheathing and finished flooring applications.

**onCENTER® 2.0E LVL Multiple Ply Fastening**

Fastener Type	LVL Depth	Fastener Spacing	2 Ply, 7/8" x 16"	3 Ply, 1 1/8" x 16"	4 Ply, 1 1/8" x 16"	Notes
Hid bolts pneumatic (Ø 3/16" x 3.5") or common (Ø 1/2" x 3.5")	7 1/2" - 15 1/2"	2 (diagonal)	12"			These minimum requirements are adequate only when all loads are evenly applied to the surface of all plies. If loads are applied to side faces of plies, see designer's specifications. Top and bottom rows of connectors should be 2" from edge.
	14" - 18"	3	12"			
	24"	4	12"			
1/2" Through bolts	7 1/2" - 18"	2 (diagonal)	24"			Fasteners must have full embedment of shank, but must not be over-driven, over-tightened, or cross-threaded.
	24"	3	24"			
	30"	3	24"			
USP WS or Simpson SDS Screws	7 1/2" - 18"	2 (diagonal)	24"			Bolt holes must be 1/2" to 1/16" larger than bolt diameter. Bolt must extend through full thickness of member end at least 12" beyond. Use a washer under head and nut.
	24"	3	24"			
	30"	3	24"			
Simpson SWS2 Fastener/Track Screws	7 1/2" - 18"	2	24"			Spacings closer than those indicated may be acceptable, but require evaluation. Please contact BlueLinX.
	24"	3	24"			
	30"	3	24"			

**Professional BUILDERS SUPPLY**  
 ...it's about the service!!

3941 USHWY 421 North  
 Wilmington, NC 28401  
 (910) 386-4300

DRAWN BY: JJC  
 DATE: 10-01-2021  
 SCALE: 1/4" = 1'-0"  
 SALESPERSON: Troy Wilkerson

**BUILDER NAME:** PB & S Office Building  
**PROJECT NAME:** 11496 Hwy. 401 S. - Fuquay Varina, NC

LEVEL NAME: 1st Floor Framing Layout (Ceiling)  
 PAGE: 1