

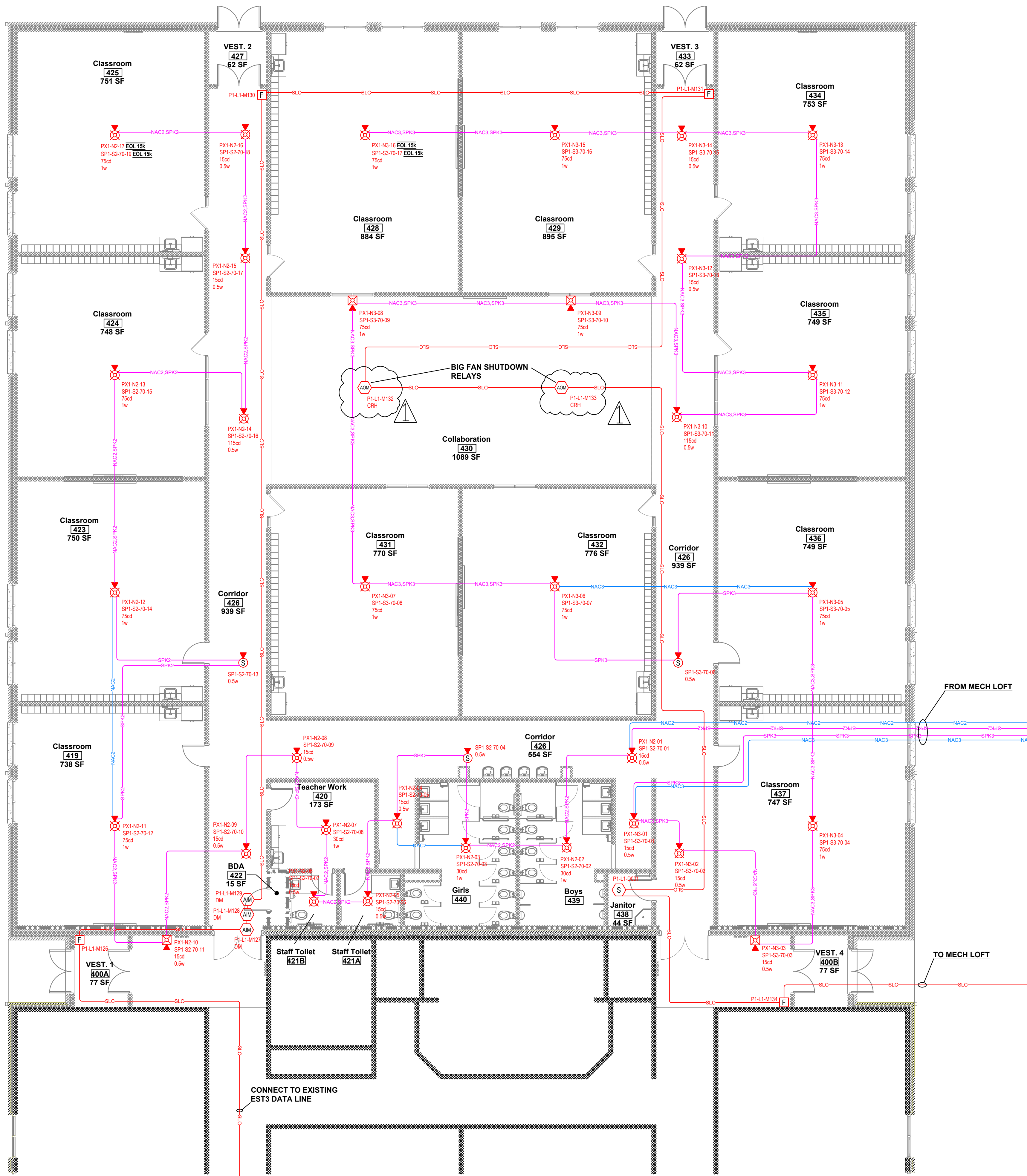
REVISIONS

NO.	DATE	REVISION
1	10/17/23	ADDED FAN SHUTDOWN RELAYS
	BY:	
	BY:	
	BY:	
	BY:	
	BY:	
	BY:	
	BY:	

This fire alarm shop drawing was prepared for equipment application only. The information contained herein is intended to aid in the installation of this system. No design changes have been made to the engineer of record's contract documents.

Dated: 01-13-2023

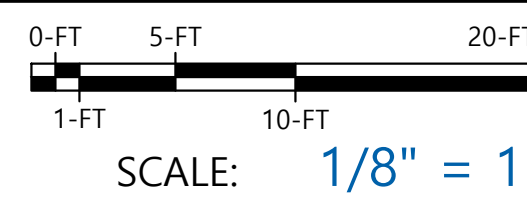
Signed: *James L. Carroll*
James L. Carroll, CET
NICET #: 106506
NICET LEVEL IV
FIRE ALARM SYSTEMS



DEVICE LEGEND					
SYMBOL	QTY	EXISTING	MANUFACTURER	PART NO	DESCRIPTION
[FACU]	1	X	EDWARDS	EST3 MAIN FACP	FACP W CPU, 2 LOOPS 3-CAB21
	1	X	EDWARDS	3-PPS/M	PRIMARY POWER SUPPLY 120V
	1	X	EDWARDS	3-SDDC2	SIGNATURE DUAL DRIVER CONTROLLER (LRM)
	1	X	EDWARDS	3-LCD	LIQUID CRYSTAL DISPLAY MODULE
	1	X	EDWARDS	3-CPU3	CENTRAL PROCESSOR MODULE
[NAC]	1		EDWARDS	BPS6A	REMOTE BOOSTER POWER SUPPLY, 6.5A, 120VAC, RED
	2		EDWARDS	12V6A5	7.2 AH BATTERY OVERVOLTAGE PROTECTOR CIRCUIT PROTECTION-120V 50W AUDIO
	1		DITEK	DTK-120HW	7.2 AH BATTERY
[AMP]	1		EDWARDS	ANSS0MDR2	NOTIFICATION PANEL, RED
	2		EDWARDS	12V6A5	7.2 AH BATTERY
	1		EDWARDS	ANSZMB2A	ZONE MODULE, 4 CLASS B OR 2 CLASS A CIRCUITS.
[F]	4		EDWARDS	SIGA-278	DOUBLE ACTION FIRE ALARM STATION
[ADM] CRH	2		EDWARDS	SIGA-CRH	CONTROL RELAY MODULE (HIGH CURRENT)
[ADM] CC1S	1		EDWARDS	SIGA-CC1S	SIGNATURE SINGLE INPUT SIGNAL SYNCHRONIZATION MODULE
[ADM] DM	3		EDWARDS	SIGA-CT2	DUAL INPUT MODULE
[S]	1		EDWARDS	SIGA-OSD W/SIGA-SB4 BASE	INTELLIGENT OPTICAL SMOKE DETECTOR
[S]	15		EDWARDS	SIGA-OSH W/SIGA-SB4 BASE	MULTISENSOR SMOKE AND HEAT DETECTOR
[S]	4		EDWARDS	G4SVWF/GRSW	SPEAKER/STROBE, WALL, WHITE, FIRE
[S]	3		EDWARDS	GCSWF/GRSW	SPEAKER, CEILING, WHITE, FIRE
[S]	37		EDWARDS	GCSVWF/GRSW	SPEAKER/STROBE, CEILING, WHITE, FIRE

CABLE AND WIRE LEGEND					
LABEL	PART NO	AWG	RESISTANCE (Ω/KFT)	DESCRIPTION	TOTAL LENGTH
NAC1	14/2 FPLP (NAC)	14	3.07	2 COND. SOLID COPPER FPLP/R ANALOG UNSHIELDED	357'
NAC2	14/2 FPLP (NAC)	14	3.07	2 COND. SOLID COPPER FPLP/R ANALOG UNSHIELDED	519'
NAC3	14/2 FPLP (NAC)	14	3.07	2 COND. SOLID COPPER FPLP/R ANALOG UNSHIELDED	645'
P	14/2 FPLP (AUX)	14	3.07	2 COND. SOLID COPPER FPLP/R UNSHIELDED	1'
SLC	16/2 FPLP SLC	16	4.89	2 COND. SOLID COPPER FPLP ADDRESSABLE UNSHIELDED	1015'
SPK1	16/2 FPLP (SPEAKER)	16	4.89	2 COND. SOLID COPPER FPLP/R ANALOG SPEAKER	357'
SPK2	16/2 FPLP (SPEAKER)	16	4.89	2 COND. SOLID COPPER FPLP/R ANALOG SPEAKER	416'
SPK3	16/2 FPLP (SPEAKER)	16	4.89	2 COND. SOLID COPPER FPLP/R ANALOG SPEAKER	500'

1 FIRST FLOOR FIRE ALARM
SCALE: 1/8" = 1'0"



PREPARED BY: J.Carroll

CHECKED BY:

PROJECT MANAGER: B.Heath

DATE: 01-13-2023

PROJECT NO: 314277

TITLE: FIRE ALARM SHOP DRAWINGS

SHEET: FA01

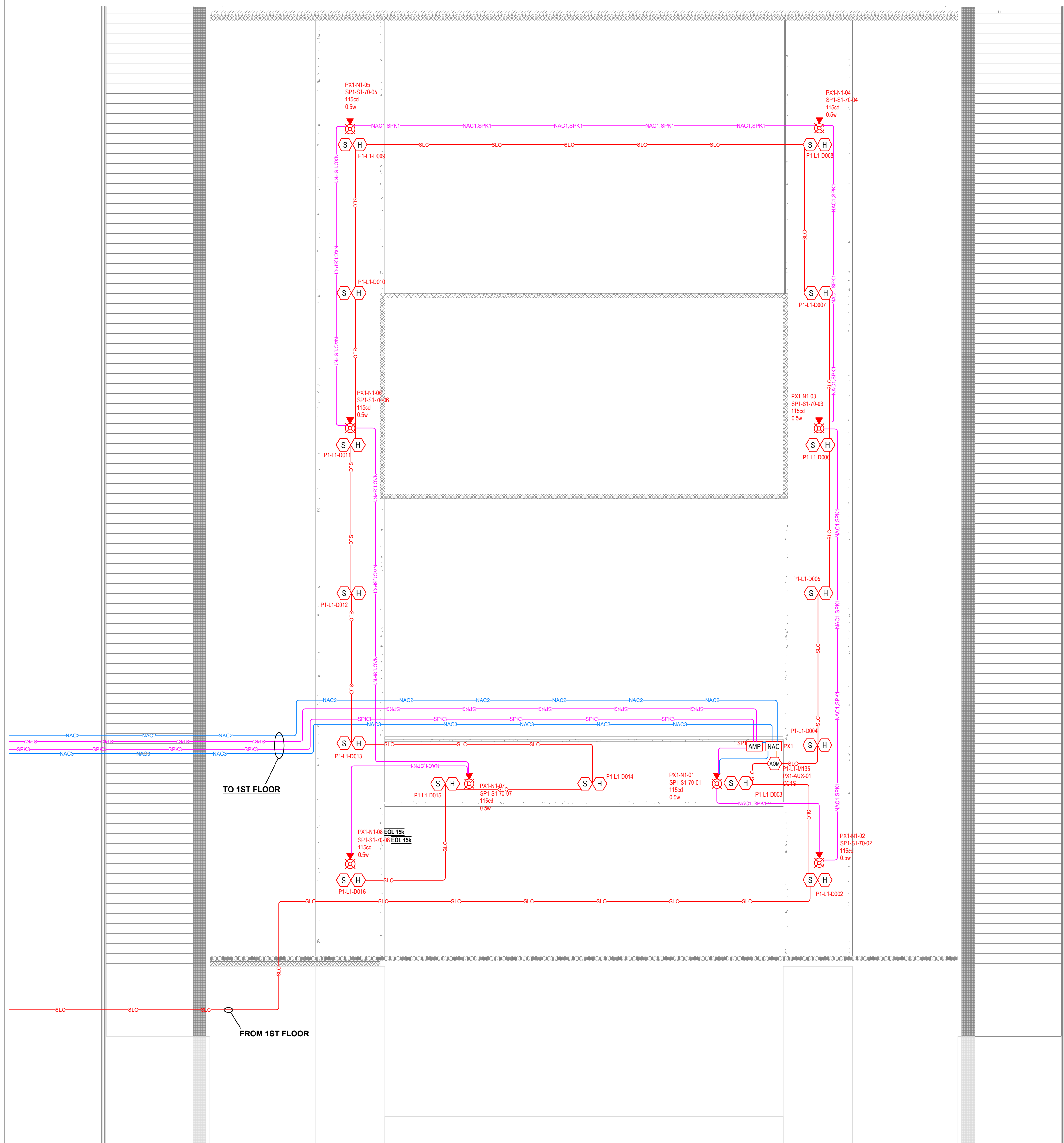
REVISIONS

NO.	DATE	REVISION
1	10/17/23 BY:JLC	ADDED FAN SHUTDOWN RELAYS
	BY:	
	BY:	
	BY:	
	BY:	
	BY:	
	BY:	
	BY:	

This fire alarm shop drawing was prepared for equipment application only. The information contained herein is intended to aid in the installation of this system. No design changes have been made to the engineer of record's contract documents.

Dated: 01-13-2023

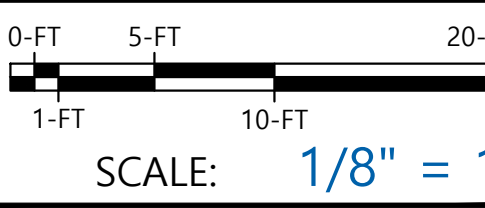
Signed: *James L. Carroll*
James L. Carroll, CET
NICET #: 106506
NICET LEVEL IV
FIRE ALARM SYSTEMS



DEVICE LEGEND					
SYMBOL	QTY	EXISTING	MANUFACTURER	PART NO	DESCRIPTION
[FACP]	1	X	EDWARDS	EST3 MAIN FACP	FACP W/ CPU, 2 LOOPS 3-CAB21
	1	X	EDWARDS	3-PPSM	PRIMARY POWER SUPPLY 120V
	1	X	EDWARDS	3-SDDC2	SIGNATURE DUAL DRIVER CONTROLLER (LRM)
	1	X	EDWARDS	3-LCD	LIQUID CRYSTAL DISPLAY MODULE
	1	X	EDWARDS	3-CPU3	CENTRAL PROCESSOR MODULE
[NAC]	1		EDWARDS	BPS6A	REMOTE BOOSTER POWER SUPPLY, 6.5A, 120VAC, RED
	2		EDWARDS	12V6A5	7.2 AH BATTERY
	1		DITEK	DTK-120HW	OVERVOLTAGE PROTECTOR CIRCUIT PROTECTION-120V
[AMP]	1		EDWARDS	ANS50MDR2	50W AUDIO NOTIFICATION PANEL, RED
	2		EDWARDS	12V6A5	7.2 AH BATTERY
	1		EDWARDS	ANSZM4B2A	ZONE MODULE, 4 CLASS B OR 2 CLASS A CIRCUITS.
[F]	4		EDWARDS	SIGA-278	DOUBLE ACTION FIRE ALARM STATION
[ADM] CRH	2		EDWARDS	SIGA-CRH	CONTROL RELAY MODULE (HIGH CURRENT)
[ADM] CC1S	1		EDWARDS	SIGA-CC1S	SIGNATURE SINGLE INPUT SIGNAL SYNCHRONIZATION MODULE
[ADM] DM	3		EDWARDS	SIGA-CT2	DUAL INPUT MODULE
[S]	1		EDWARDS	SIGA-OSD W/SIGA-SB4 BASE	INTELLIGENT OPTICAL SMOKE DETECTOR
[S]	15		EDWARDS	SIGA-OSH W/SIGA-SB4 BASE	MULTISENSOR SMOKE AND HEAT DETECTOR
[S]	4		EDWARDS	G4SVWF/GRSW	SPEAKER/STROBE, WALL, WHITE, FIRE
[S]	3		EDWARDS	GCSWF/GRSW	SPEAKER, CEILING, WHITE, FIRE
[S]	37		EDWARDS	GCSWF/GRSW	SPEAKER/STROBE, CEILING, WHITE, FIRE

CABLE AND WIRE LEGEND					
LABEL	PART NO	AWG	RESISTANCE (Ω/KFT)	DESCRIPTION	TOTAL LENGTH
NAC1	14/2 FPLP (NAC)	14	3.07	2 COND. SOLID COPPER FPLP/R ANALOG UNSHIELDED	357'
NAC2	14/2 FPLP (NAC)	14	3.07	2 COND. SOLID COPPER FPLP/R ANALOG UNSHIELDED	519'
NAC3	14/2 FPLP (NAC)	14	3.07	2 COND. SOLID COPPER FPLP/R ANALOG UNSHIELDED	645'
P	14/2 FPLP/R (AUX)	14	3.07	2 COND. SOLID COPPER FPLP/R UNSHIELDED	1'
SLC	16/2 FPLP SLC	16	4.89	2 COND. SOLID COPPER FPLP ADDRESSABLE UNSHIELDED	1015'
SPK1	16/2 FPLP (SPEAKER)	16	4.89	2 COND. SOLID COPPER FPLP/R ANALOG SPEAKER	357'
SPK2	16/2 FPLP (SPEAKER)	16	4.89	2 COND. SOLID COPPER FPLP/R ANALOG SPEAKER	416'
SPK3	16/2 FPLP (SPEAKER)	16	4.89	2 COND. SOLID COPPER FPLP/R ANALOG SPEAKER	500'

1 MECHANICAL LOFT FIRE ALARM
SCALE: 1/8" = 1'0"



PREPARED BY: J.Carroll

CHECKED BY:

PROJECT MANAGER: B.Heath

DATE: 01-13-2023

PROJECT NO: 314277

TITLE:
**FIRE ALARM
SHOP
DRAWINGS**

SHEET:
FA02

FIRE ALARM SYSTEM

REVISIONS

NO.	DATE	REVISION
1	10/17/23	ADDED FAN SHUTDOWN RELAYS
BY:		
BY:		
BY:		
BY:		
BY:		

This fire alarm shop drawing was prepared for equipment application only. The information contained herein is intended to aid in the installation of this system. No design changes have been made to the engineer of record's contract documents.

Dated: 01-13-2023

Signed: *James L. Carroll*
James L. Carroll, CET
NICET #: 106506
NICET LEVEL IV
FIRE ALARM SYSTEMS

NOT TO SCALE

PREPARED BY: J.Carroll

CHECKED BY:

PROJECT MANAGER: B.Heath

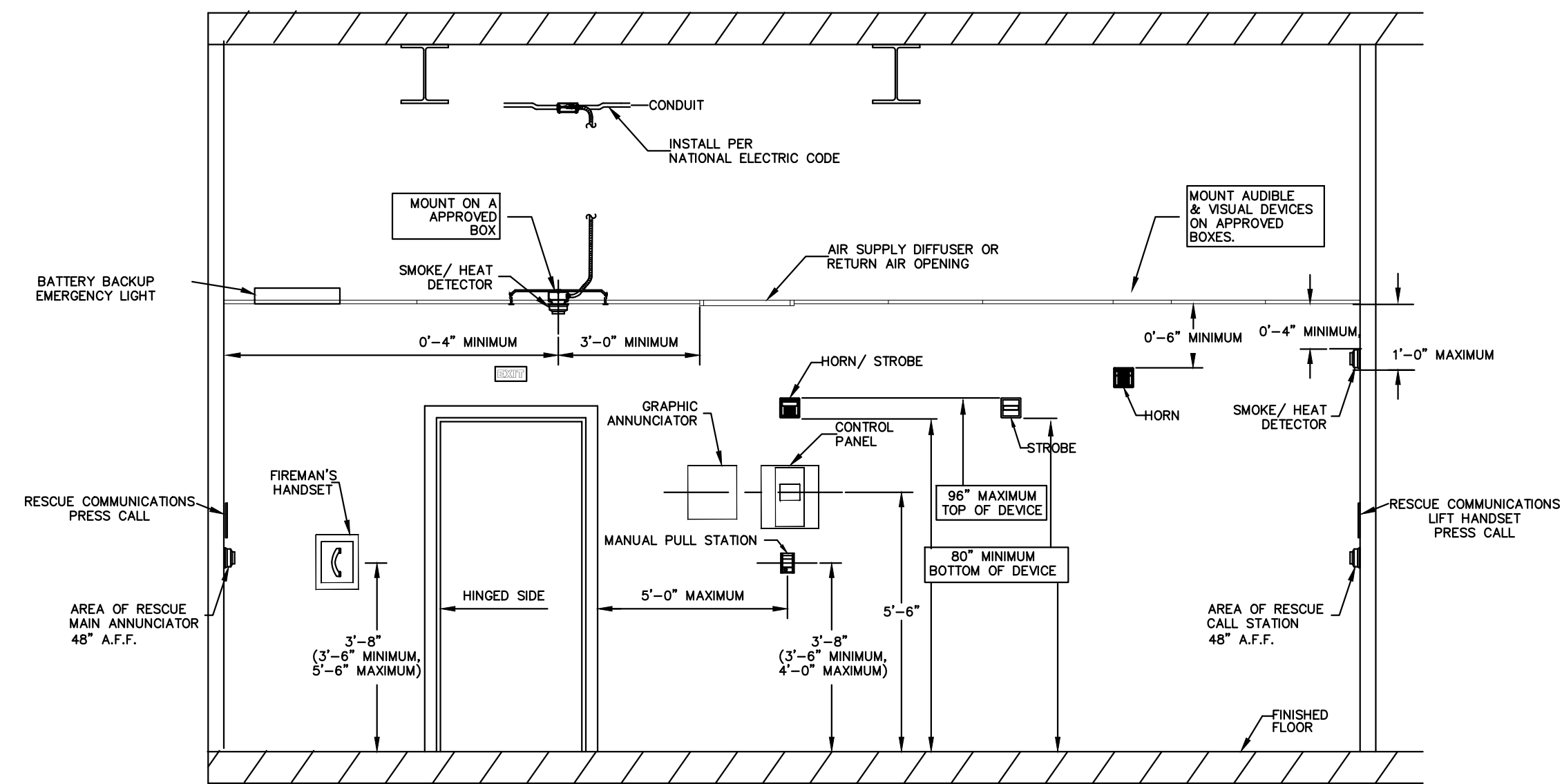
DATE: 01-13-2023

PROJECT NO: 314277

TITLE: FIRE ALARM CALCULATIONS RISER

SHEET: FA03

DEVICE INSTALLATION REQUIREMENTS



PANEL PX1 (BATTERY CALCULATION)
(SECONDARY POWER SOURCE REQUIREMENTS)

PANEL COMPONENTS	QTY	PART NO.	DESCRIPTION	STANDBY CURRENT (AMPS)	TOTAL (A)	SECONDARY ALARM CURRENT (AMPS)	TOTAL
1	1	SP1SA Mainboard	Mainboard for SP1SA	0.07	0.07	0.07	0.07
1	1	DTK 120WH	120WH Battery	0	0	0	0
1	1	SP1SA-01	SP1SA-01	0	0	0	0
1	1	SP1SA-02	SP1SA-02	0	0	0	0
1	1	SP1SA-03	SP1SA-03	0	0	0	0
1	1	SP1SA-04	SP1SA-04	0	0	0	0
1	1	SP1SA-05	SP1SA-05	0	0	0	0
1	1	SP1SA-06	SP1SA-06	0	0	0	0
1	1	SP1SA-07	SP1SA-07	0	0	0	0
1	1	SP1SA-08	SP1SA-08	0	0	0	0
1	1	SP1SA-09	SP1SA-09	0	0	0	0
1	1	SP1SA-10	SP1SA-10	0	0	0	0
1	1	SP1SA-11	SP1SA-11	0	0	0	0
1	1	SP1SA-12	SP1SA-12	0	0	0	0
1	1	SP1SA-13	SP1SA-13	0	0	0	0
1	1	SP1SA-14	SP1SA-14	0	0	0	0
1	1	SP1SA-15	SP1SA-15	0	0	0	0
1	1	SP1SA-16	SP1SA-16	0	0	0	0
1	1	SP1SA-17	SP1SA-17	0	0	0	0
1	1	SP1SA-18	SP1SA-18	0	0	0	0
1	1	SP1SA-19	SP1SA-19	0	0	0	0
1	1	SP1SA-20	SP1SA-20	0	0	0	0
1	1	SP1SA-21	SP1SA-21	0	0	0	0
1	1	SP1SA-22	SP1SA-22	0	0	0	0
1	1	SP1SA-23	SP1SA-23	0	0	0	0
1	1	SP1SA-24	SP1SA-24	0	0	0	0
1	1	SP1SA-25	SP1SA-25	0	0	0	0
1	1	SP1SA-26	SP1SA-26	0	0	0	0
1	1	SP1SA-27	SP1SA-27	0	0	0	0
1	1	SP1SA-28	SP1SA-28	0	0	0	0
1	1	SP1SA-29	SP1SA-29	0	0	0	0
1	1	SP1SA-30	SP1SA-30	0	0	0	0
1	1	SP1SA-31	SP1SA-31	0	0	0	0
1	1	SP1SA-32	SP1SA-32	0	0	0	0
1	1	SP1SA-33	SP1SA-33	0	0	0	0
1	1	SP1SA-34	SP1SA-34	0	0	0	0
1	1	SP1SA-35	SP1SA-35	0	0	0	0
1	1	SP1SA-36	SP1SA-36	0	0	0	0
1	1	SP1SA-37	SP1SA-37	0	0	0	0
1	1	SP1SA-38	SP1SA-38	0	0	0	0
1	1	SP1SA-39	SP1SA-39	0	0	0	0
1	1	SP1SA-40	SP1SA-40	0	0	0	0
1	1	SP1SA-41	SP1SA-41	0	0	0	0
1	1	SP1SA-42	SP1SA-42	0	0	0	0
1	1	SP1SA-43	SP1SA-43	0	0	0	0
1	1	SP1SA-44	SP1SA-44	0	0	0	0
1	1	SP1SA-45	SP1SA-45	0	0	0	0
1	1	SP1SA-46	SP1SA-46	0	0	0	0
1	1	SP1SA-47	SP1SA-47	0	0	0	0
1	1	SP1SA-48	SP1SA-48	0	0	0	0
1	1	SP1SA-49	SP1SA-49	0	0	0	0
1	1	SP1SA-50	SP1SA-50	0	0	0	0
1	1	SP1SA-51	SP1SA-51	0	0	0	0
1	1	SP1SA-52	SP1SA-52	0	0	0	0
1	1	SP1SA-53	SP1SA-53	0	0	0	0
1	1	SP1SA-54	SP1SA-54	0	0	0	0
1	1	SP1SA-55	SP1SA-55	0	0	0	0
1	1	SP1SA-56	SP1SA-56	0	0	0	0
1	1	SP1SA-57	SP1SA-57	0	0	0	0
1	1	SP1SA-58	SP1SA-58	0	0	0	0
1	1	SP1SA-59	SP1SA-59	0	0	0	0
1	1	SP1SA-60	SP1SA-60	0	0	0	0
1	1	SP1SA-61	SP1SA-61	0	0	0	0
1	1	SP1SA-62	SP1SA-62	0	0	0	0
1	1	SP1SA-63	SP1SA-63	0	0	0	0
1	1	SP1SA-64	SP1SA-64	0	0	0	0
1	1	SP1SA-65	SP1SA-65	0	0	0	0
1	1	SP1SA-66	SP1SA-66	0	0	0	0
1	1	SP1SA-67	SP1SA-67	0	0	0	0
1	1	SP1SA-68	SP1SA-68	0	0	0	0
1	1	SP1SA-69	SP1SA-69	0	0	0	0
1	1	SP1SA-70	SP1SA-70	0	0	0	0
1	1	SP1SA-71	SP1SA-71	0	0	0	0
1	1	SP1SA-72	SP1SA-72	0	0	0	0
1	1	SP1SA-73	SP1SA-73	0	0	0	0
1	1	SP1SA-74	SP1SA-74	0	0	0	0
1	1	SP1SA-75	SP1SA-75	0	0	0	0
1	1	SP1SA-76	SP1SA-76	0	0	0	0
1	1	SP1SA-77	SP1SA-77	0	0	0	0
1	1	SP1SA-78	SP1SA-78	0	0	0	0
1	1	SP1SA-79	SP1SA-79	0	0	0	0
1	1	SP1SA-80	SP1SA-80	0	0	0	0
1	1	SP1SA-81	SP1SA-81	0	0	0	0
1	1	SP1SA-82	SP1SA-82	0	0	0	0
1	1	SP1SA-83	SP1SA-83	0	0	0	0
1	1	SP1SA-84	SP1SA-84	0	0	0	0
1	1	SP1SA-85	SP1SA-85	0	0	0	0
1	1	SP1SA-86	SP1SA-86	0	0	0	0
1	1	SP1SA-87	SP1SA-87	0	0	0	0
1	1	SP1SA-88	SP1SA-88	0	0	0	0
1	1	SP1SA-89	SP1SA-89	0	0	0	0
1	1	SP1SA-90	SP1SA-90	0	0	0	0
1	1	SP1SA-91	SP1SA-91	0	0	0	0
1	1	SP1SA-92	SP1SA-92	0	0	0	0
1	1	SP1SA-93	SP1SA-93	0	0	0	0
1	1	SP1SA-94	SP1SA-94	0	0	0	0
1	1	SP1SA-95	SP1SA-95	0	0	0	0
1	1	SP1SA-96	SP1SA-96	0	0	0	0
1	1	SP1SA-97	SP1SA-97	0	0	0	0
1	1	SP1SA-98	SP1SA-98	0	0	0	0
1	1	SP1SA-99	SP1SA-99	0	0	0	0
1	1	SP1SA-100	SP1SA-100	0	0	0	0
1	1	SP1SA-101	SP1SA-101	0	0	0	0
1	1	SP1SA-102	SP1SA-102	0	0	0	0
1	1	SP1SA-103	SP1SA-103	0	0	0	0
1	1	SP1SA-104	SP1SA-104	0	0	0	0
1	1	SP1SA-105	SP1SA-105	0	0	0	0
1	1	SP1SA-106	SP1SA-106	0	0	0	0
1	1	SP1SA-107	SP1SA-107	0	0	0	0
1	1	SP1SA-108	SP1SA-108	0	0	0	0
1	1	SP1SA-109	SP1SA-109	0	0	0	0
1	1	SP1SA-110	SP1SA-110	0	0	0	0
1	1	SP1SA-111	SP1SA-111	0	0	0	0
1	1	SP1SA-112	SP1SA-112	0	0	0	0
1	1	SP1SA-113	SP1SA-113	0	0	0	0
1	1	SP1SA-114	SP1SA-114	0	0	0	0
1	1	SP1SA-115	SP1SA-115	0	0	0	0
1	1	SP1SA-116	SP1SA-116	0	0	0	0
1	1	SP1SA-117	SP1SA-117	0	0	0	0
1	1	SP1SA-118	SP1SA-118	0	0	0	0
1	1	SP1SA-119	SP1SA-119	0	0	0	0
1	1	SP1SA-120	SP1SA-120	0	0	0	0
1	1	SP1SA-121	SP1SA-121	0	0	0	0
1	1	SP1SA-122	SP1SA-122	0	0	0	0
1	1	SP1SA-123	SP1SA-123	0	0	0	0
1	1	SP1SA-124	SP1SA-124	0	0	0	0
1	1	SP1SA-125	SP1SA-125	0	0	0	0
1	1	SP1SA-126	SP1SA-126	0	0	0	0
1	1	SP1SA-127	SP1SA-127	0	0	0	0
1	1	SP1SA-128	SP1SA-128	0	0	0	0
1	1	SP1SA-129	SP1SA-129	0	0	0	0
1	1	SP1SA-130	SP1SA-130	0	0	0	0
1	1	SP1SA-131	SP1SA-131	0	0	0	0
1	1	SP1SA-132	SP1SA-132	0	0	0	0
1	1	SP1SA-133	SP1SA-133	0	0	0	0
1	1	SP1SA-134	SP1SA-134	0	0	0	0
1	1	SP1SA-135	SP1SA-135	0	0	0	0
1	1	SP1SA-136	SP1SA-136	0	0	0	0
1	1	SP1SA-137	SP1SA-137	0	0	0	0
1	1	SP1SA-138	SP1SA-138	0	0	0	0
1	1	SP1SA-139	SP1SA-139	0	0	0	0
1	1	SP1SA-140	SP1SA-140	0	0	0	0
1	1	SP1SA-141	SP1SA-141	0	0	0	0
1	1	SP1SA-142	SP1SA-142	0	0	0	0
1	1	SP1SA-143	SP1SA-143	0	0	0	0
1	1	SP1SA-144					