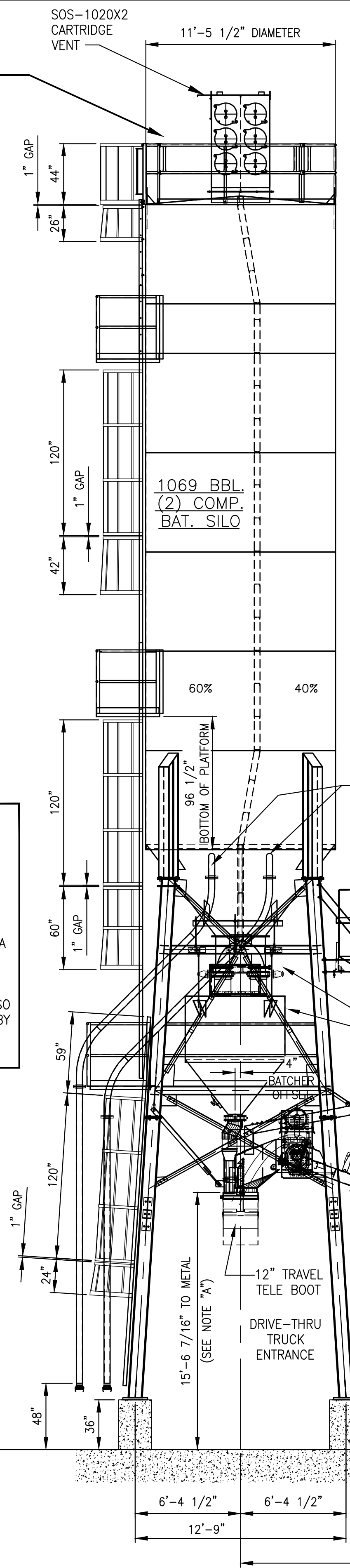


BATCHER SILO END ELEVATION

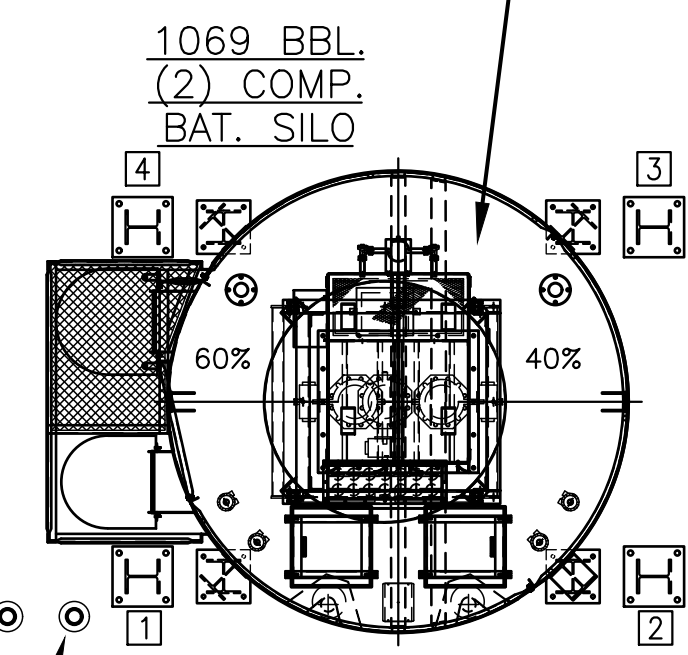
NOTE: NVG COMPATIBLE LIGHTING TO BE INSTALLED BY CUSTOMER.



CONCRETE BATCH PLANT SIDE ELEVATION

NOTE "A": MINIMUM TRUCK CLEARANCE HEIGHTS SHOWN WITH A CONCRETE LOADING RAMP. CUSTOMER TO ADD AND/OR INCREASE CONCRETE PIERS EQUALLY UNDERNEATH ALL EQUIPMENT TO OBTAIN DESIRED CLEARANCES WITH OR WITHOUT A CONCRETE LOADING RAMP. THE CUSTOMER IS RESPONSIBLE FOR DETERMINING FINAL TRUCK CLEARANCE HEIGHTS AND IS ALSO RESPONSIBLE FOR THE MEANS BY WHICH THOSE HEIGHTS ARE ACHIEVED.

NOTE: NVG COMPATIBLE LIGHTING TO BE INSTALLED BY CUSTOMER.



**Stephens**  
 711 W. 4th STREET  
 TOMPKINSVILLE, KY. 42167  
 PHONE: (270) 487-8774  
 QUALITY CONCRETE PRODUCTS SINCE 1957

**APPROVAL REQ'D**  
 PLEASE CHECK THIS DRAWING CAREFULLY AND MARK APPROPRIATE BOX:

APPROVED AS DRAWN  
 NOT APPROVED, RESUBMITTAL REQ'D

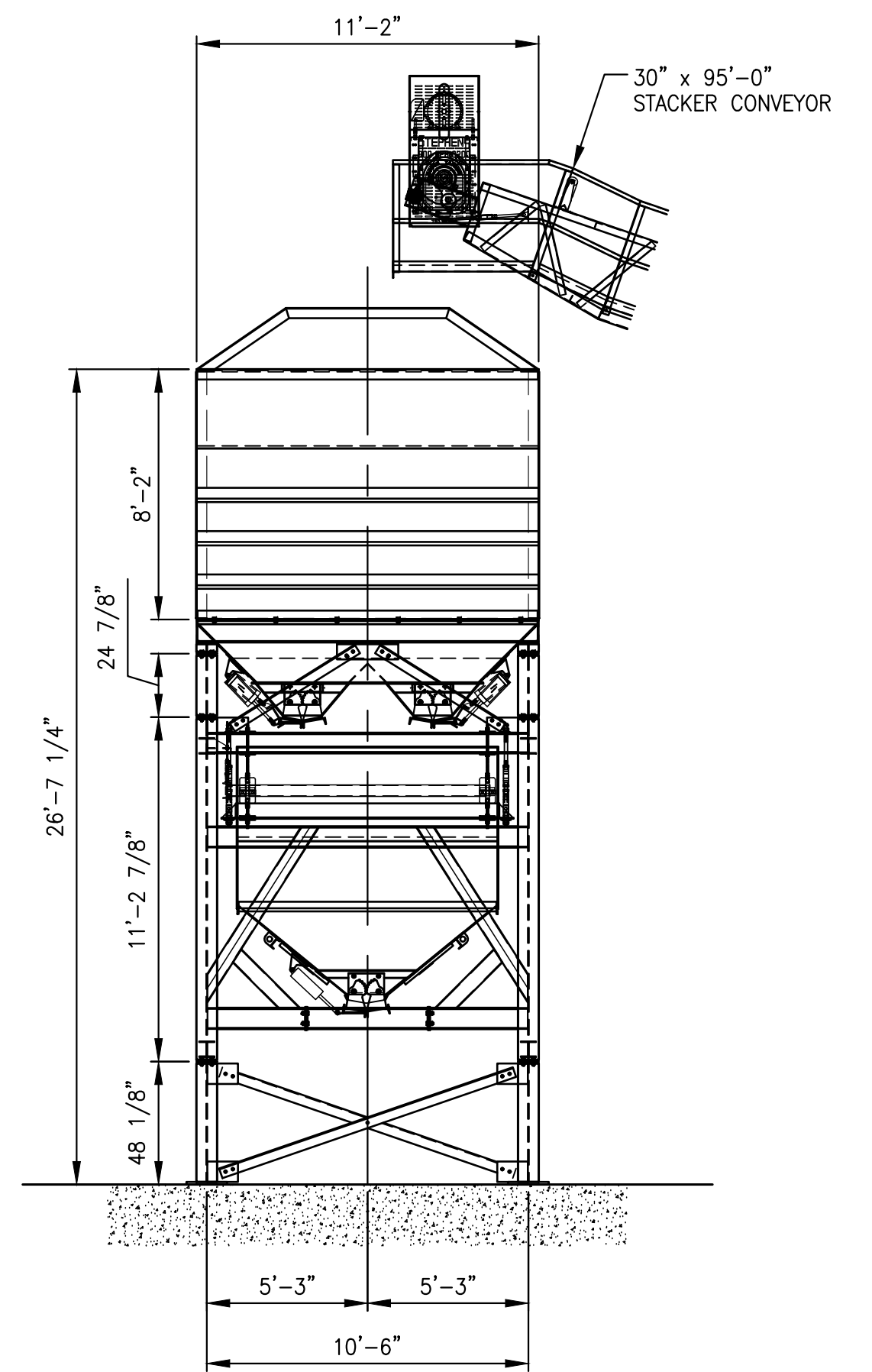
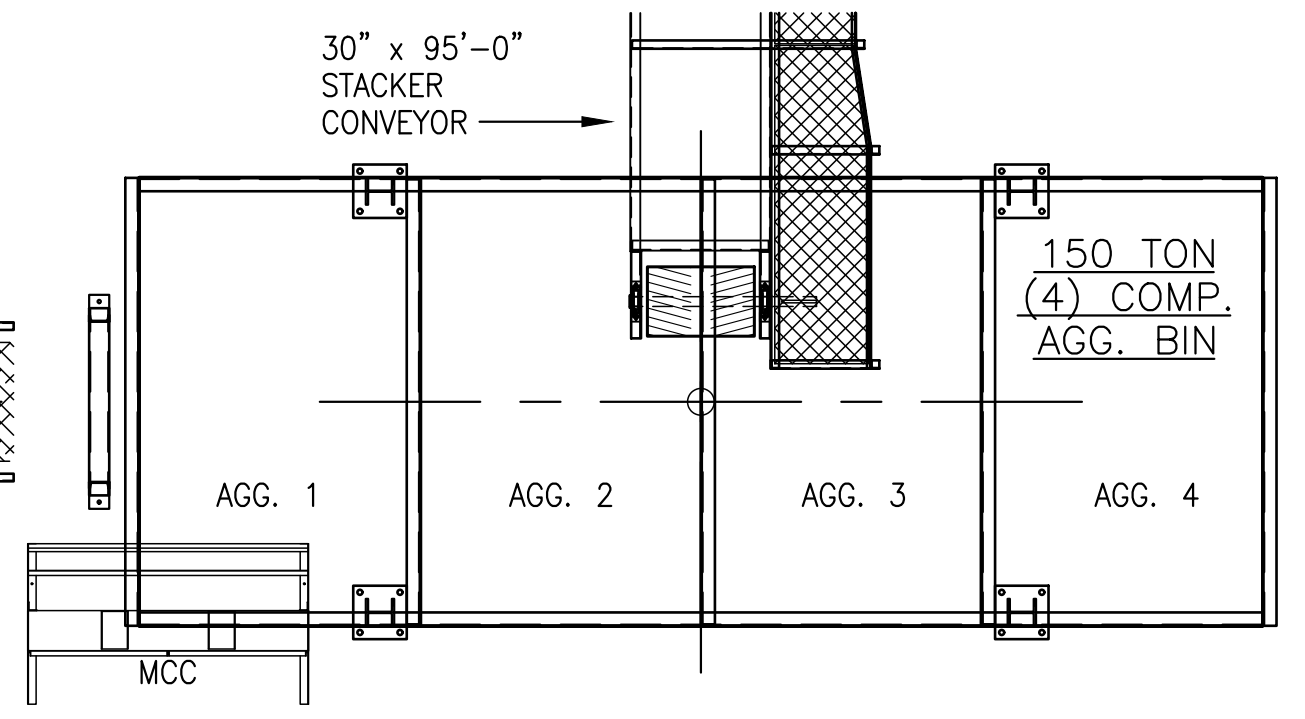
CUSTOMER NOTE: NO FABRICATION WILL TAKE PLACE BY STEPHENS WITHOUT A SIGNED COPY WITH CUSTOMER APPROVAL.

SIGNATURE \_\_\_\_\_ DATE \_\_\_\_\_  
 PLEASE RETURN SIGNED COPY TO ADDRESS ABOVE OR:  
 E-MAIL: \_\_\_\_\_ FAX: \_\_\_\_\_  
 Tshumes@stephensmfg.com (270) 487-

CONCRETE BATCH PLANT KEY PLAN

NOTE: ALL CONCRETE PIERS, RAMPS AND FOUNDATIONS ARE TO BE THE RESPONSIBILITY OF THE CUSTOMER.

NO.	DATE	REVISION



AGG. END ELEVATION

1	03/02/20	ADDED 500 GALLON WATER TANK, WATER TANK SUPPORT PLATFORM, AND TELE BOOT (TSH)
1	03/02/20	UPDATED CUSTOMER NAME & LOCATION PER CHANGE ORDER

2	06/24/20	ADDED NOTE CONCERNING MARINE CORPS LIGHTING SUGGESTIONS. (TSH)
---	----------	--

NO.	DATE	REVISION

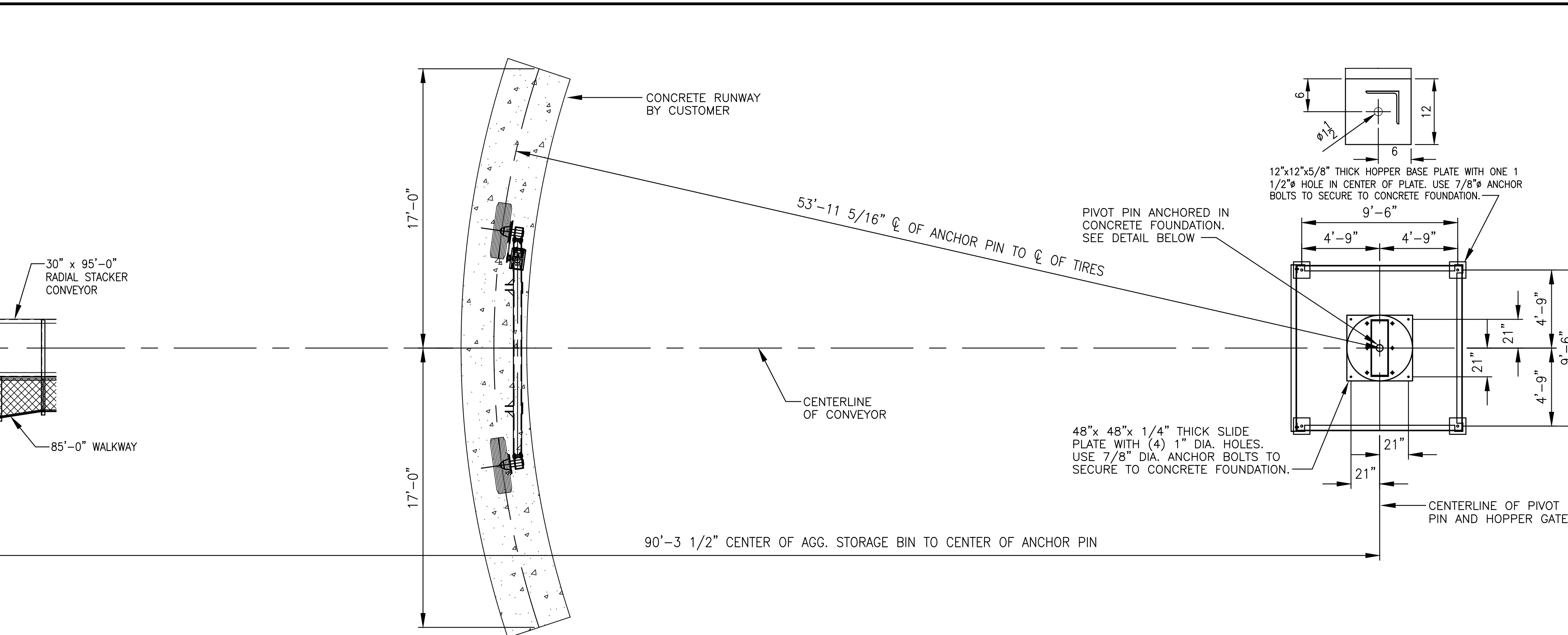
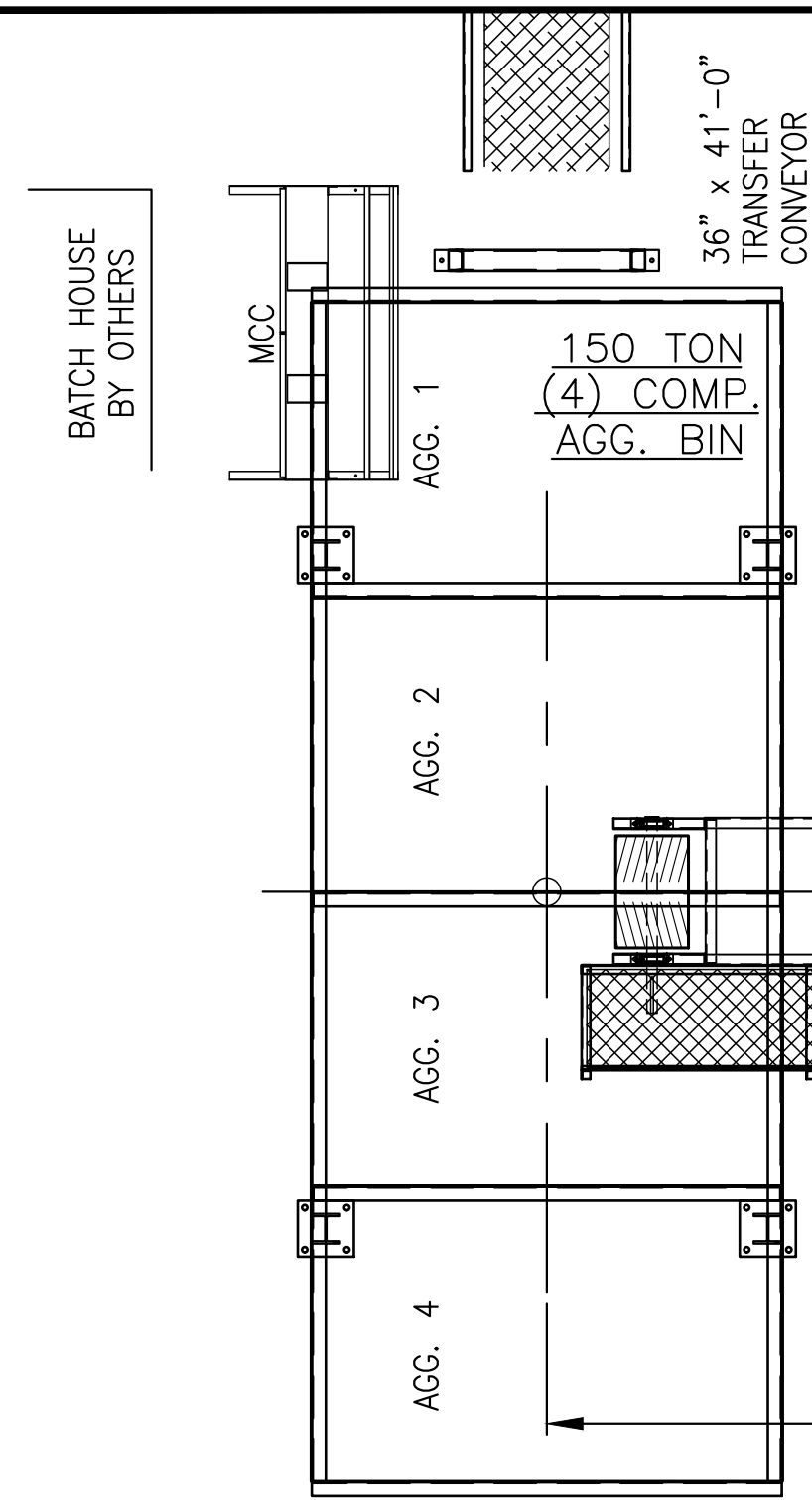
CONFIDENTIAL DISCLOSURE	DRAWN BY: TSH
THIS DRAWING IS THE EXCLUSIVE PROPERTY OF STEPHENS MANUFACTURING CO., INC. THE RECIPIENT ACCEPTS THAT ITS CONTENTS ARE CONFIDENTIAL AND MUST NOT BE COPIED OR SUBMITTED TO OUTSIDE PARTIES FOR USE OR EXAMINATION WITHOUT WRITTEN CONSENT.	DATE: 09/20/2018
	SCALE: N.T.S.

**Stephens**  
 TOMPKINSVILLE, KY. 42167

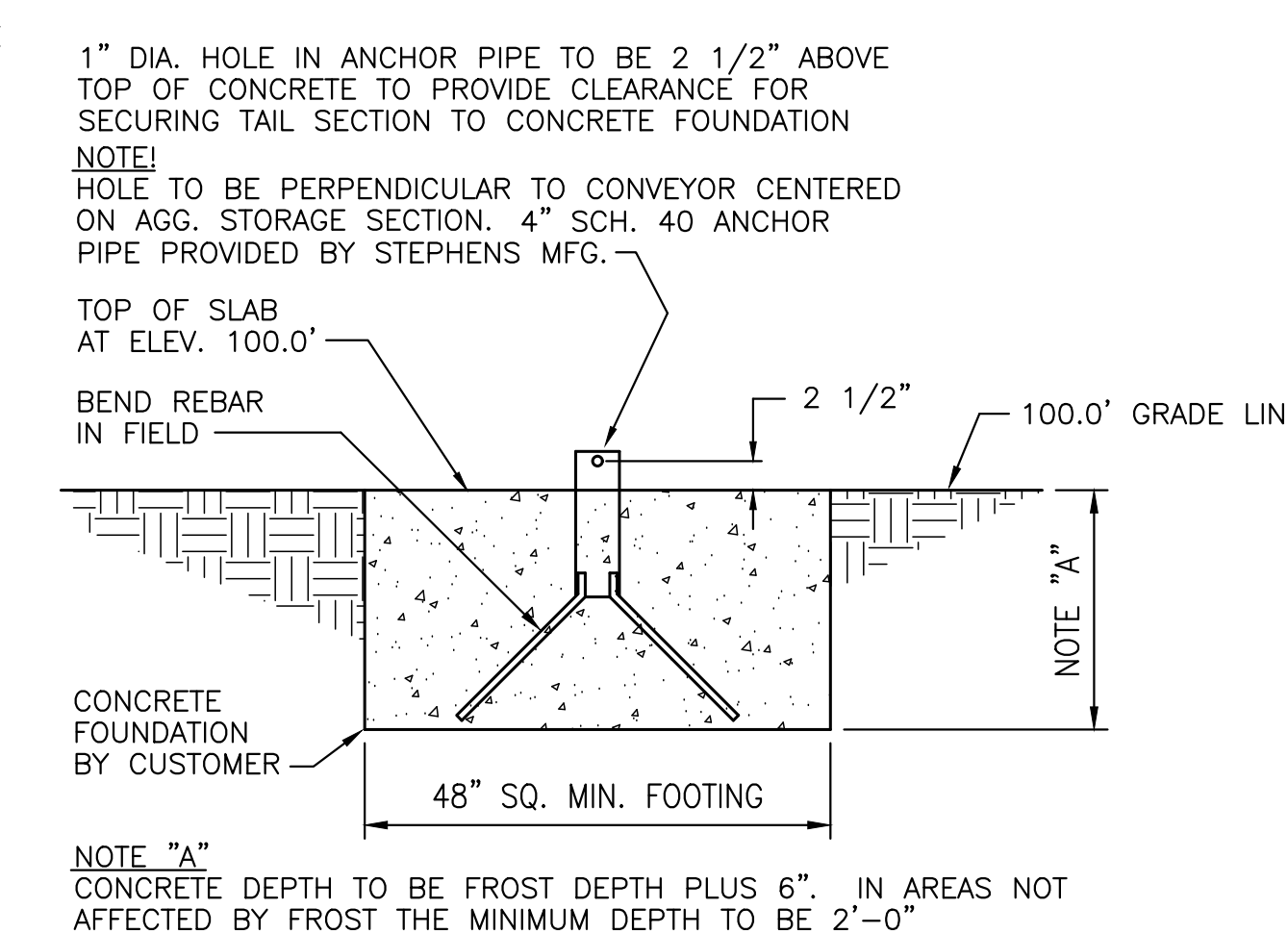
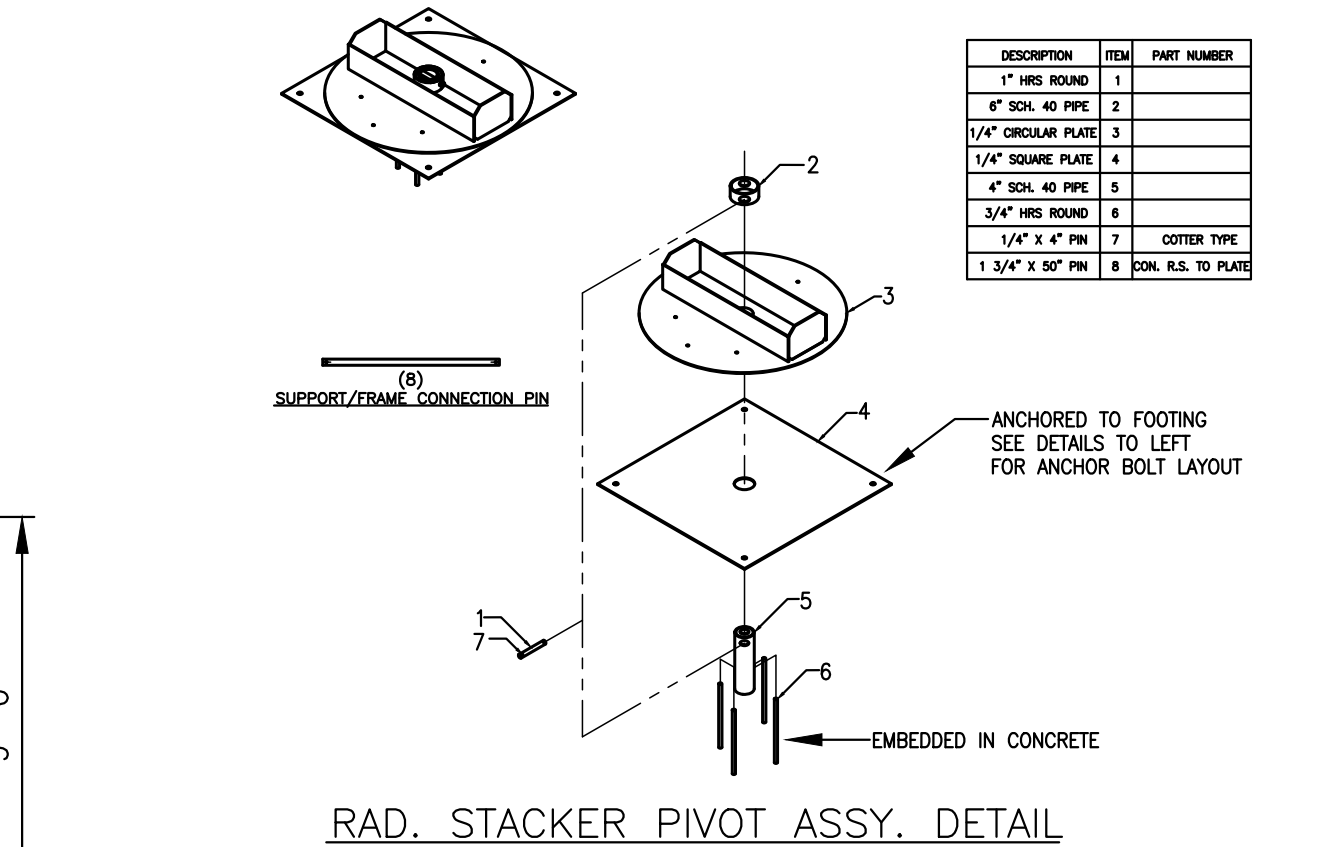
FOR: CRETE SOLUTIONS HAMPSTEAD, NC 28443	JOB NO. 59102
TITLE: CONCRETE BATCH PLANT LAYOUT	REV. NO. 1 OF 4

REVISION

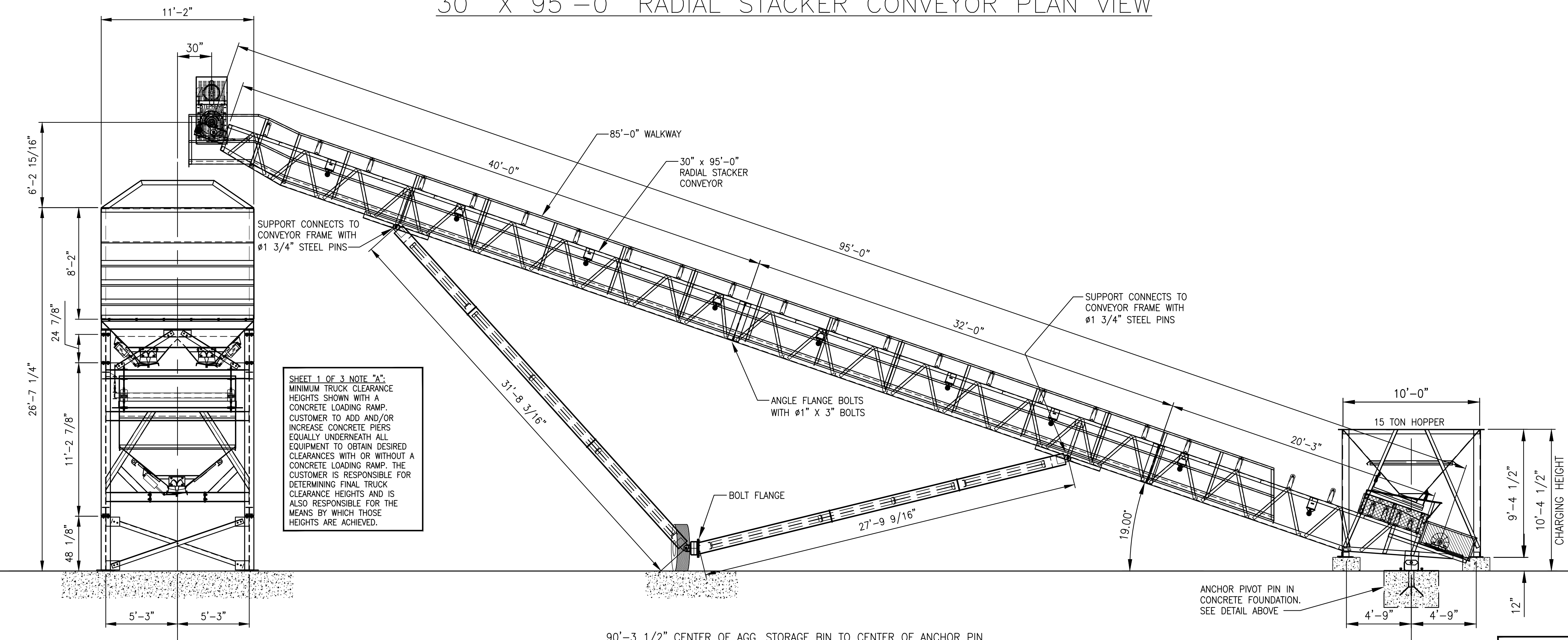
1 OF 4



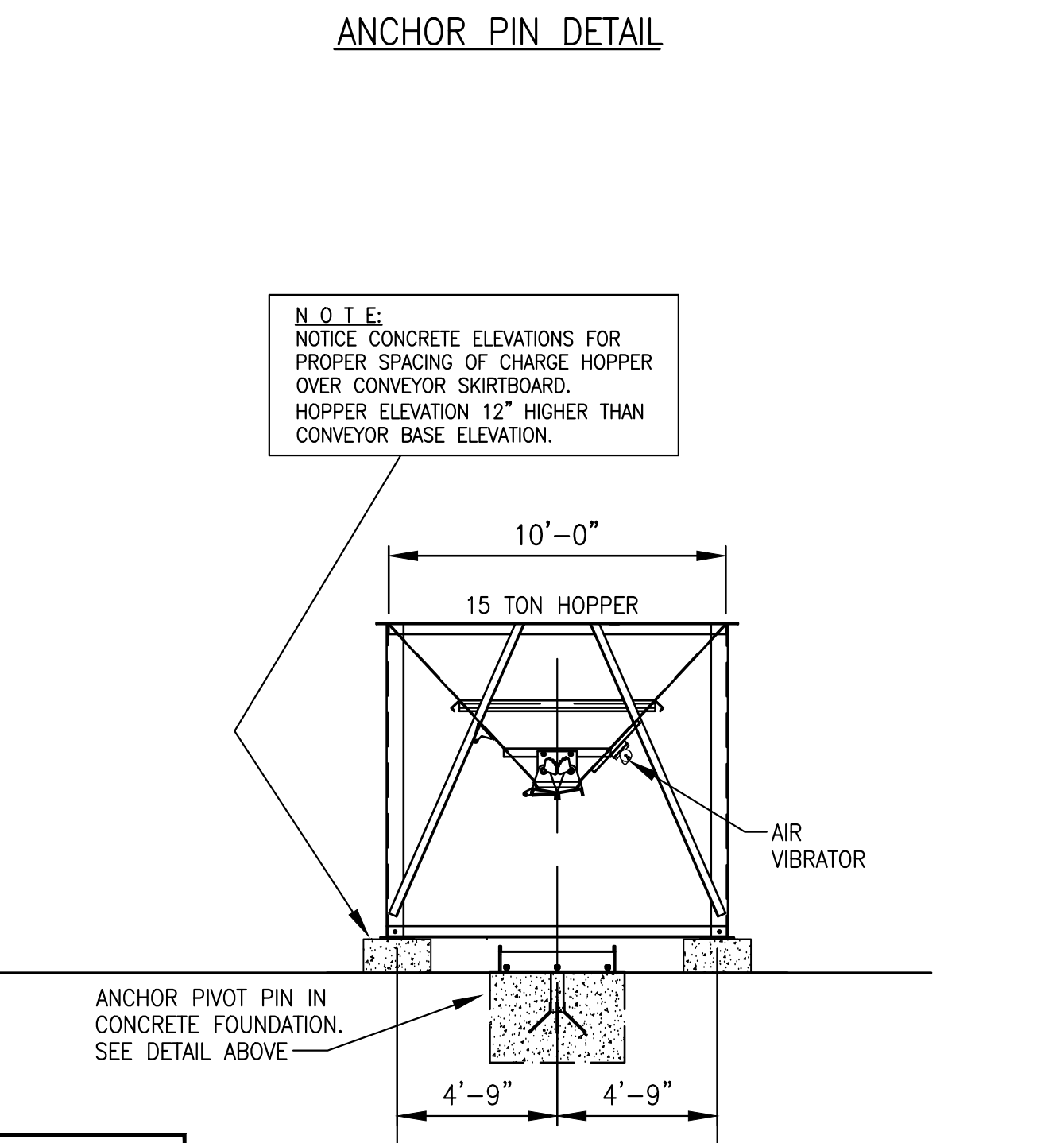
30" X 95'-0" RADIAL STACKER CONVEYOR PLAN VIEW



ANCHOR PIN DETAIL



30" X 95'-0" RADIAL STACKER CONVEYOR ELEVATION VIEW



HOPPER - END VIEW

SHEET 1 OF 3 NOTE "A": MINIMUM TRUCK CLEARANCE HEIGHTS SHOWN WITH A CONCRETE LOADING RAMP. CUSTOMER TO ADD AND/OR INCREASE CONCRETE PIERS EQUALLY UNDERNEATH ALL EQUIPMENT TO OBTAIN DESIRED CLEARANCES WITH OR WITHOUT A CONCRETE LOADING RAMP. THE CUSTOMER IS RESPONSIBLE FOR DETERMINING FINAL TRUCK CLEARANCE HEIGHTS AND IS ALSO RESPONSIBLE FOR THE MEANS BY WHICH THOSE HEIGHTS ARE ACHIEVED.

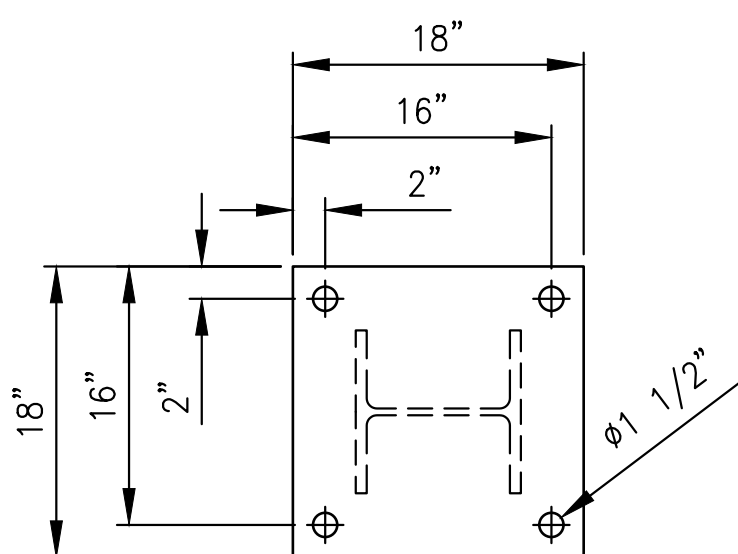
NOTE: NOTICE CONCRETE ELEVATIONS FOR PROPER SPACING OF CHARGE HOPPER OVER CONVEYOR SKIRTBOARD. HOPPER ELEVATION 12" HIGHER THAN CONVEYOR BASE ELEVATION.

NOTE: ALL CONCRETE PIERS, RAMPS AND FOUNDATIONS ARE TO BE THE RESPONSIBILITY OF THE CUSTOMER.

CONCRETE BATCH PLANT LOADS PER COLUMN

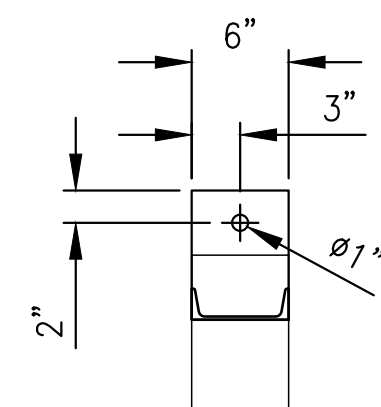
1 KIP EQUALS 1,000 POUNDS

DESCRIPTION OF ITEM	VERTICAL LOADS				HORIZONTAL SHEAR			
	DEAD (D)	LIVE (L)	WIND (Wsd)	SEISMIC (0.7*E)	DEAD (D)	LIVE (L)	WIND (Wsd)	SEISMIC (0.7*E)
COLUMN LINE "A" - 1069 BBL. (2) COMP. CEM. SILO	14.0 KIPS	104.0 KIPS	±89.1 KIPS	±116.8 KIPS	0.9 KIPS	6.6 KIPS	6.2 KIPS	8.1 KIPS
COLUMN LINE "B" - 1069 BBL. (2) COMP. CEM. SILO	14.0 KIPS	104.0 KIPS	±89.1 KIPS	±116.8 KIPS	0.9 KIPS	6.6 KIPS	6.2 KIPS	8.1 KIPS
COLUMN LINE "C" - 150 TON/12 YD. AGGREGATE SECTION	12.0 KIPS	94.5 KIPS	±33.1 KIPS	±27.1 KIPS	0.0 KIPS	0.0 KIPS	6.0 KIPS	4.9 KIPS
COLUMN LINE "D" - 150 TON/12 YD. AGGREGATE SECTION	12.0 KIPS	94.5 KIPS	±33.1 KIPS	±27.1 KIPS	0.0 KIPS	0.0 KIPS	6.0 KIPS	4.9 KIPS
COLUMN LINE "W" - 36" BELT BATCH CONVEYOR SUPPORT	1.0 KIPS	1.0 KIPS	±1.0 KIPS	±1.0 KIPS	0.0 KIPS	0.0 KIPS	2.1 KIPS	0.2 KIPS
COLUMN LINE "X" - 36" BELT BATCH CONVEYOR SUPPORT	1.0 KIPS	1.0 KIPS	±4.5 KIPS	±0.7 KIPS	0.0 KIPS	0.0 KIPS	0.9 KIPS	0.2 KIPS
COLUMN LINE "Y" - 36" BELT BATCH CONVEYOR SUPPORT	1.0 KIPS	1.0 KIPS	±2.2 KIPS	±0.4 KIPS	0.0 KIPS	0.0 KIPS	0.8 KIPS	0.2 KIPS



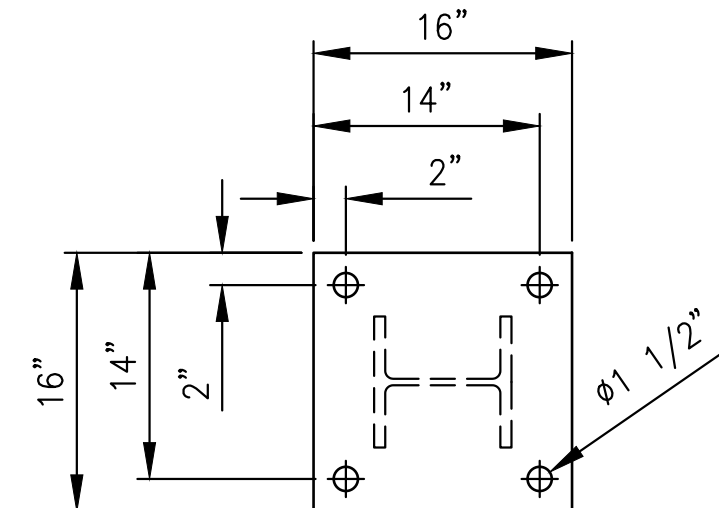
BASE PLATE DETAIL FOR COLUMN LINE A & B

1069X2 CEMENT SILO  
 (4) 18"x18"x1 1/2" THICK BASE PLATES  
 (4) 1 1/2" DIA. HOLES IN EACH PLATE  
 USE \_\_\_\_\_ DIA. ANCHOR BOLTS



BASE PLATE DETAIL FOR COLUMN LINE W, X & Y

36" BELT BATCH CONVEYOR  
 (6) 8"x6"x1/2" THICK BASE PLATES  
 (1) 1" DIA. HOLES IN EACH PLATE  
 USE \_\_\_\_\_ DIA. ANCHOR BOLTS



BASE PLATE DETAIL FOR COLUMN LINE C & D

150 TON AGGREGATE SECTION  
 (4) 16"x16"x1" THICK BASE PLATES  
 (4) 1 1/2" DIA. HOLES IN EACH PLATE  
 USE \_\_\_\_\_ DIA. ANCHOR BOLTS

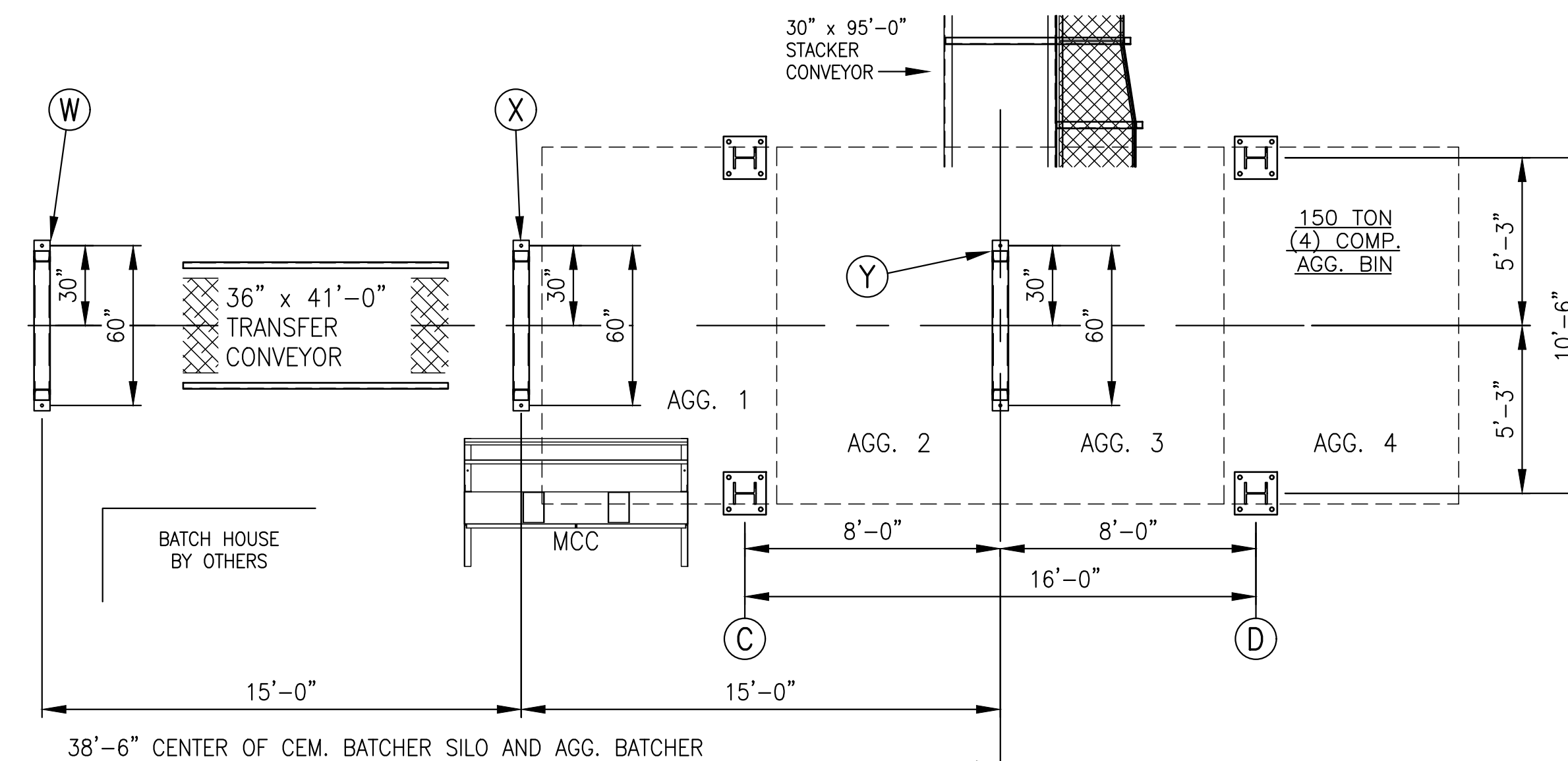
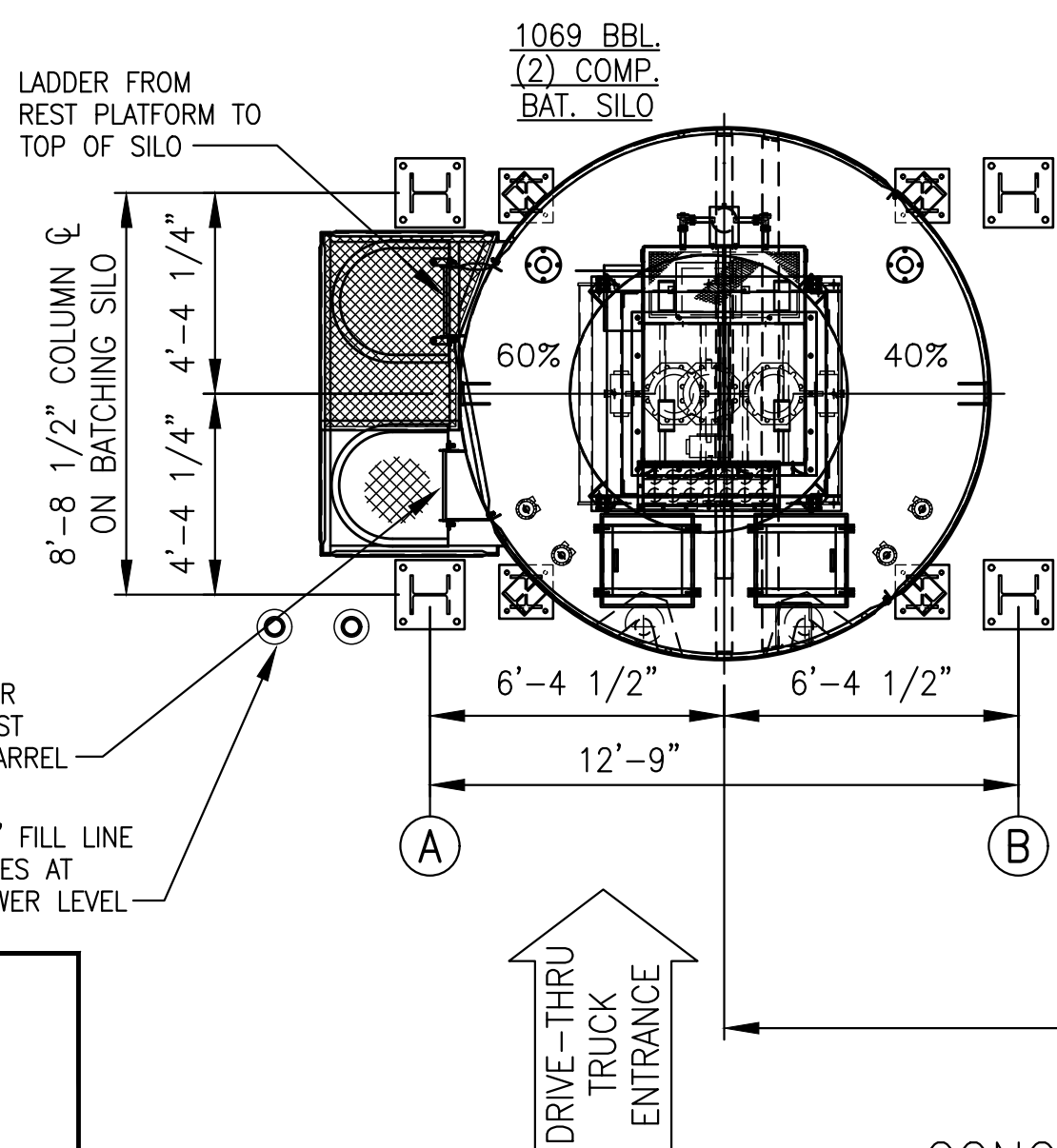
DESIGN CRITERIA

WIND AND SEISMIC LOADS PER THE INTERNATIONAL BUILDING CODE 2015 EDITION.  
**WIND LOAD CRITERIA:**  
 WIND SPEED - V<sub>wd</sub> - 113 MPH (V<sub>ult</sub> = 146 MPH, RISK CAT. II)  
 WIND IMPORTANCE FACTOR - I<sub>w</sub> - 1.0  
 EXPOSURE CATEGORY - C  
 TOPOGRAPHIC FACTOR - K<sub>zt</sub> - 1.0  
 GUST RESPONSE FACTOR - G - 0.85  
 DIRECTIONAL FACTOR - K<sub>d</sub> - 0.95  
 PRESSURE EXPOSURE COEFFICIENT - K<sub>z</sub> - 1.23 (85 FT - EXPOSURE C)  
 VELOCITY PRESSURE - Q<sub>z</sub> - 38.26 PSF  
**SEISMIC LOAD CRITERIA:**  
 SEISMIC IMPORTANCE FACTOR - I<sub>s</sub> - 1.0  
 OCCUPANCY CATEGORY - II  
 MAPPED ACCELERATIONS - S<sub>s</sub>=0.183, S<sub>1</sub>=0.081  
 SITE CLASS - D  
 DESIGN ACCELERATIONS - S<sub>ds</sub>=0.195, S<sub>d1</sub>=0.130  
 SEISMIC DESIGN CATEGORY - B  
 SEISMIC FORCE-RESISTING SYSTEM - ASYMMETRICALLY BRACED OR UNBRACED LEGS (R=2, TABLE 15.4-2)  
 BASE SHEAR - V - 0.098W (CS=0.098)  
 NON-BUILDING STRUCTURE SIMILAR TO BUILDINGS SECTION 15.5  
 SEISMIC LOADS SHOWN IN COLUMN LOAD TABLE ARE 0.7\*E FOR USE WITH ALLOWABLE STRESS DESIGN, FOR LRFD, OR WHEN USED WITH LOAD COMBINATIONS PER IBC SECTION 1605, SEISMIC LOADS MUST BE MULTIPLIED BY (1/0.7) TO BECOME "E" FOR USE WITH STRENGTH VALUES.  
 THE CALCULATION OF SEISMIC LOAD ASSUMES THE PRESENCE OF FULL DEAD AND LIVE LOADS.  
 ANCHOR BOLTS SHALL BE A36 MINIMUM. DESIGN OF ANCHORAGE FOR THE BOLTS SHOULD BE EQUAL TO THE FULL STRENGTH OF BOLT.

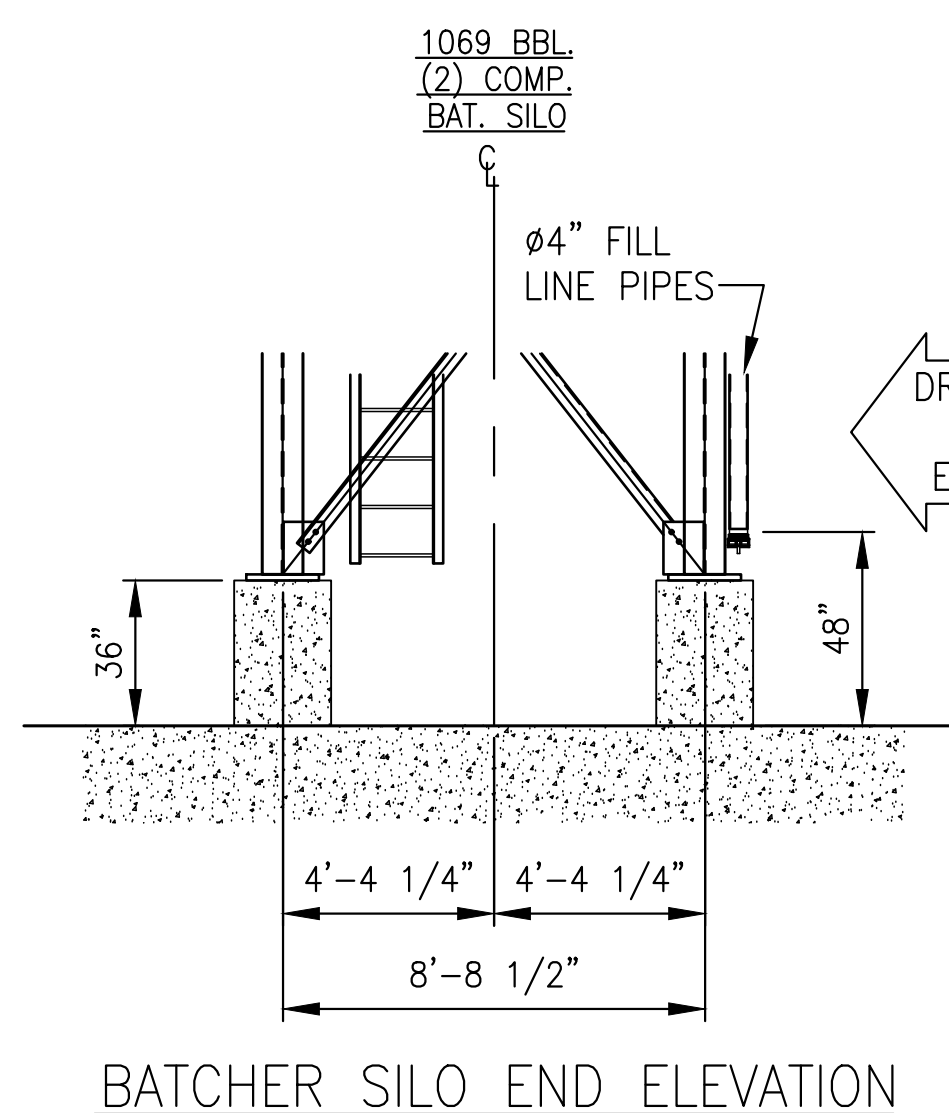
GENERAL NOTES FOR EQUIPMENT MENTIONED ON THIS DRAWING:

CONCRETE FOUNDATIONS TO BE DESIGNED FOR LOADS SHOWN ON THIS DRAWING OR AS OTHERWISE SPECIFIED BY LOCAL CODES  
**IMPORTANT NOTE:** COMPLIANCE WITH LOCAL CODES IS THE RESPONSIBILITY OF THE CUSTOMER.  
 CONCRETE FOUNDATIONS TO HAVE SUFFICIENT AREA SO AS NOT TO EXCEED THE ALLOWABLE BEARING VALUE OF THE SOIL AND MUST HAVE THE NECESSARY WEIGHT TO RESIST UPLIFT FROM WIND PRESSURE ON EQUIPMENT WHEN EMPTY.  
 SEE EQUIPMENT ELEVATIONS ON SHEET 1 FOR GENERAL ARRANGEMENT LAYOUT AND BASE PLATE LEVEL ELEVATIONS  
 ANCHOR BOLTS TO BE FURNISHED BY THE CUSTOMER. (NOTE: PLATES CAN BE WELDED TO STEEL ANCHORED IN CONCRETE)  
 STEPHENS MFG. CO., INC. ASSUMES NO RESPONSIBILITY FOR THE FOUNDATION EXCEPT TO FURNISH DIMENSIONS OF COLUMN BASES AND ANCHOR BOLTS LAYOUT. TOPS OF ALL CONCRETE PIERS MUST BE LEVEL AND IN SAME HORIZONTAL PLANE WITH ALLOWANCE FOR FINAL GROUTING.

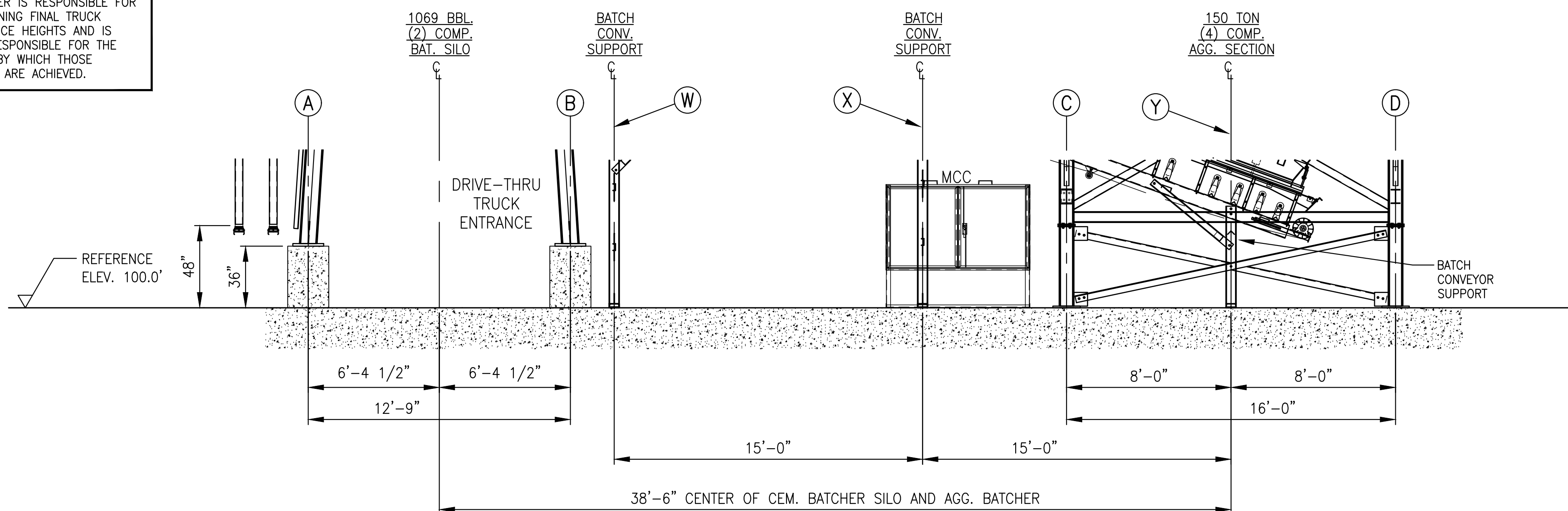
SHEET 1 OF 3 NOTE "A":  
 MINIMUM TRUCK CLEARANCE HEIGHTS SHOWN WITH A CONCRETE LOADING RAMP. CUSTOMER TO ADD AND/OR INCREASE CONCRETE PIERS EQUALLY UNDERNEATH ALL EQUIPMENT TO OBTAIN DESIRED CLEARANCES WITH OR WITHOUT A CONCRETE LOADING RAMP. THE CUSTOMER IS RESPONSIBLE FOR DETERMINING FINAL TRUCK CLEARANCE HEIGHTS AND IS ALSO RESPONSIBLE FOR THE MEANS BY WHICH THOSE HEIGHTS ARE ACHIEVED.



CONCRETE BATCH PLANT BASE PLATE AND ANCHOR BOLT LAYOUT



BATCHER SILO END ELEVATION



CONCRETE BATCH PLANT SIDE ELEVATION

NOTE:  
 ALL CONCRETE PIERS, RAMPS AND FOUNDATIONS ARE TO BE THE RESPONSIBILITY OF THE CUSTOMER.

1	03/02/20	UPDATED CUSTOMER NAME AND LOCATION PER CHANGE ORDER (TSH)	-	-	-	-	-	-
2	03/17/20	ADDED THE COMPLETED LOAD CHART AND DESIGN CRITERIA (TSH)	-	-	-	-	-	-

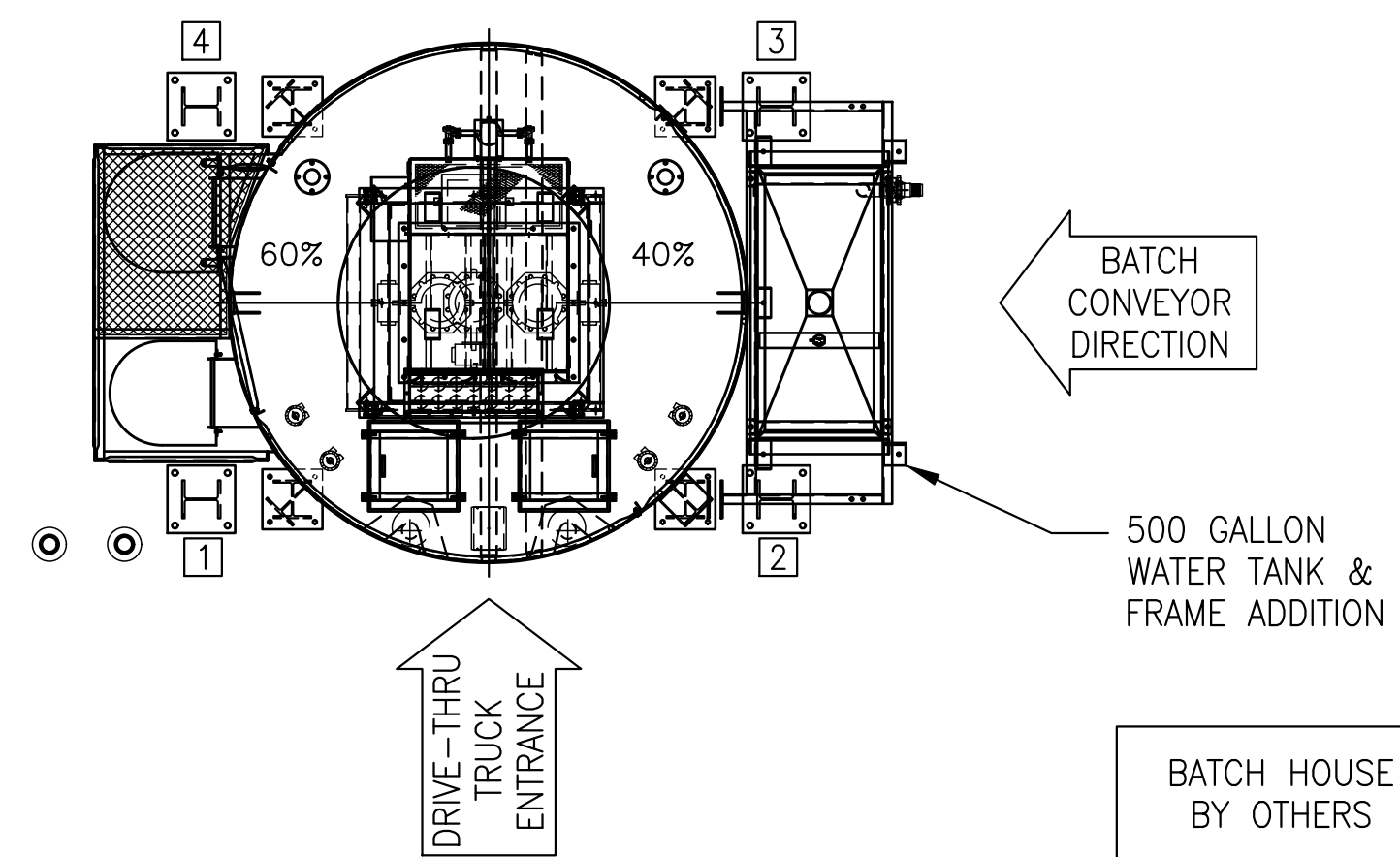
NO.	DATE	REVISION
-----	------	----------

CONFIDENTIAL DISCLOSURE  
 THIS DRAWING IS THE EXCLUSIVE PROPERTY OF STEPHENS MANUFACTURING CO., INC. THE RECIPIENT ACCEPTS THAT ITS CONTENTS ARE CONFIDENTIAL AND MUST NOT BE COPIED OR SUBMITTED TO OUTSIDE PARTIES FOR USE OR EXAMINATION WITHOUT WRITTEN CONSENT.  
 DRAWN BY: TSH  
 DATE: 09/21/2018  
 SCALE: N.T.S.

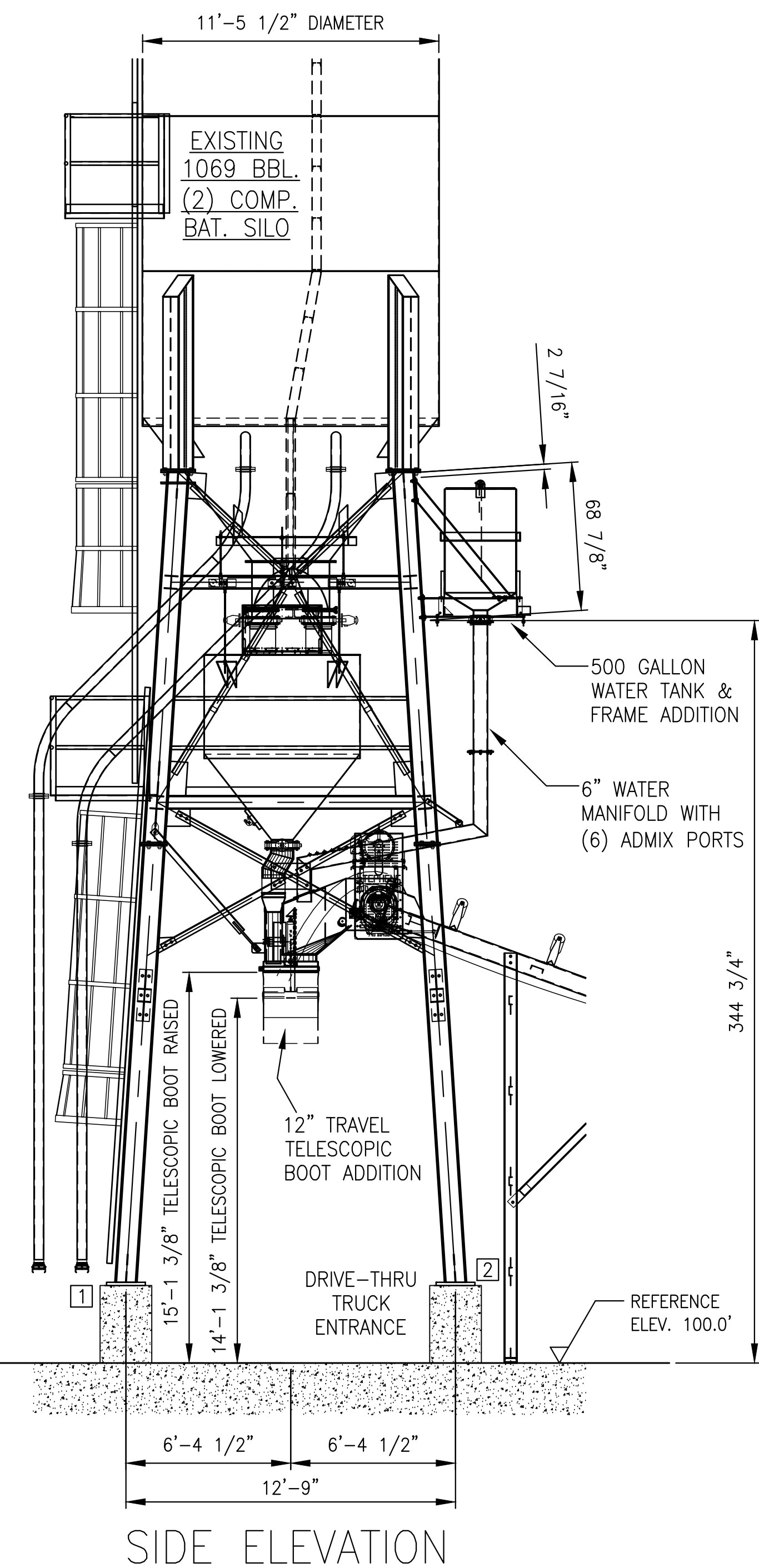
**Stephens**  
 TOMPKINSVILLE, KY. 42167

FOR: CRETE SOLUTIONS  
 HAMPSTEAD, NC 28443  
 TITLE: CONCRETE BATCH PLANT LOADS AND BASE PLATES & ANCHOR BOLT LAYOUT

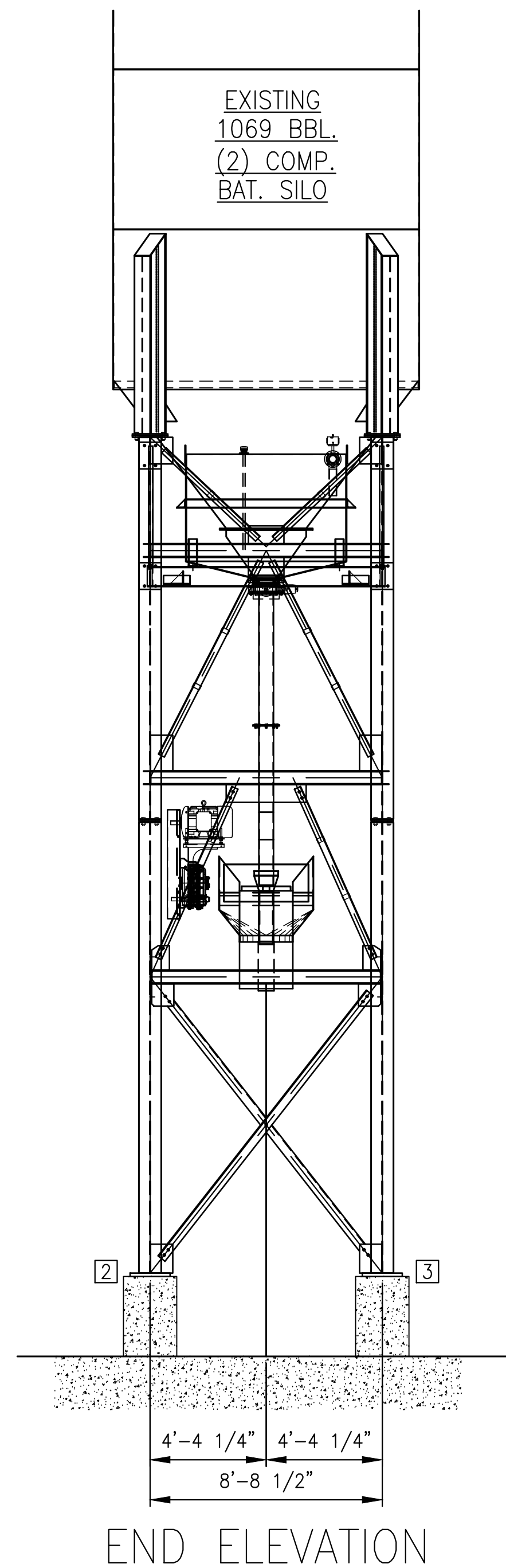
JOB NO. 59102  
 SHEET NO. 3 OF 4  
 REV. NO. 1



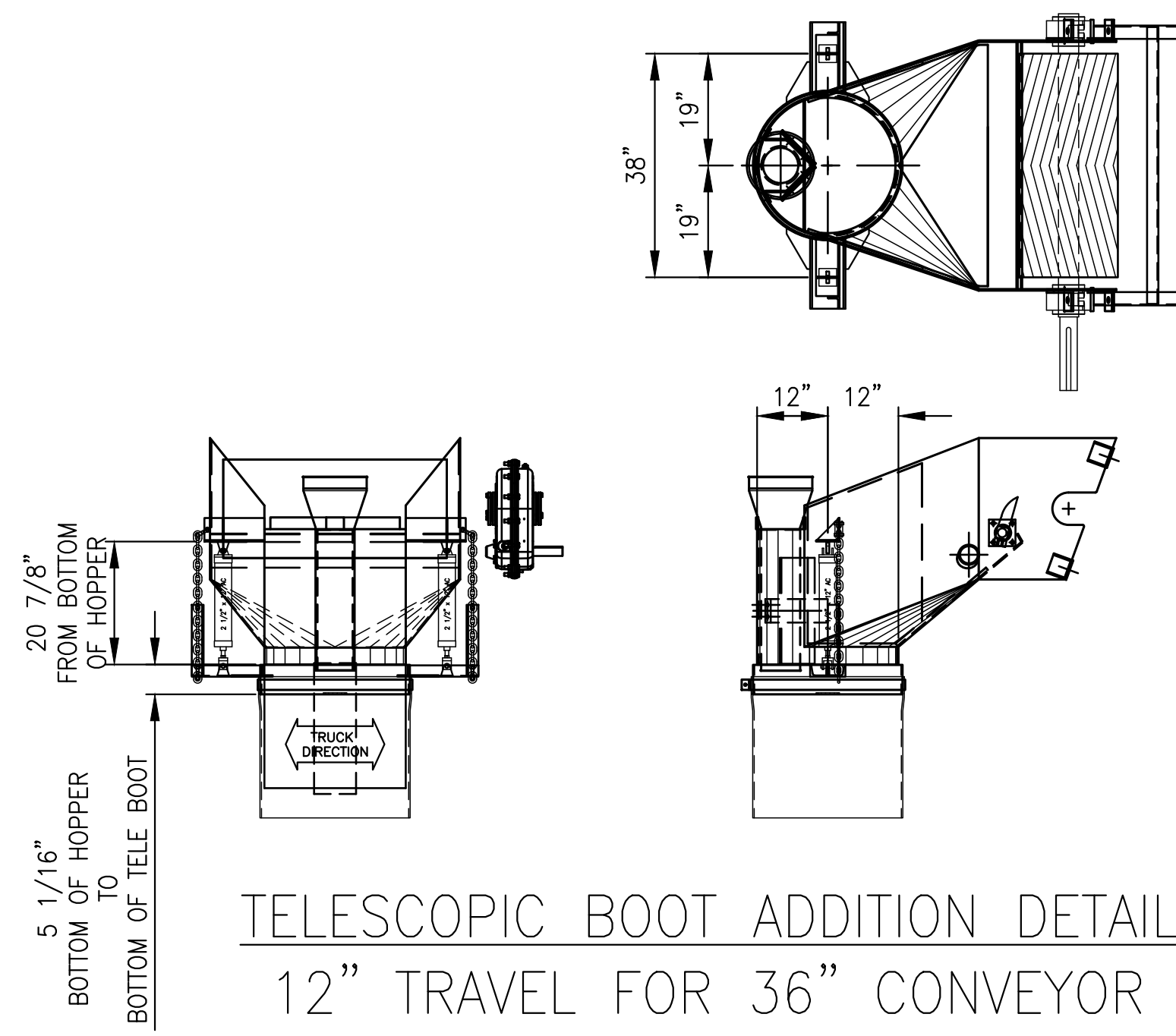
ADDITIONS SHOWN FROM TOP VIEW



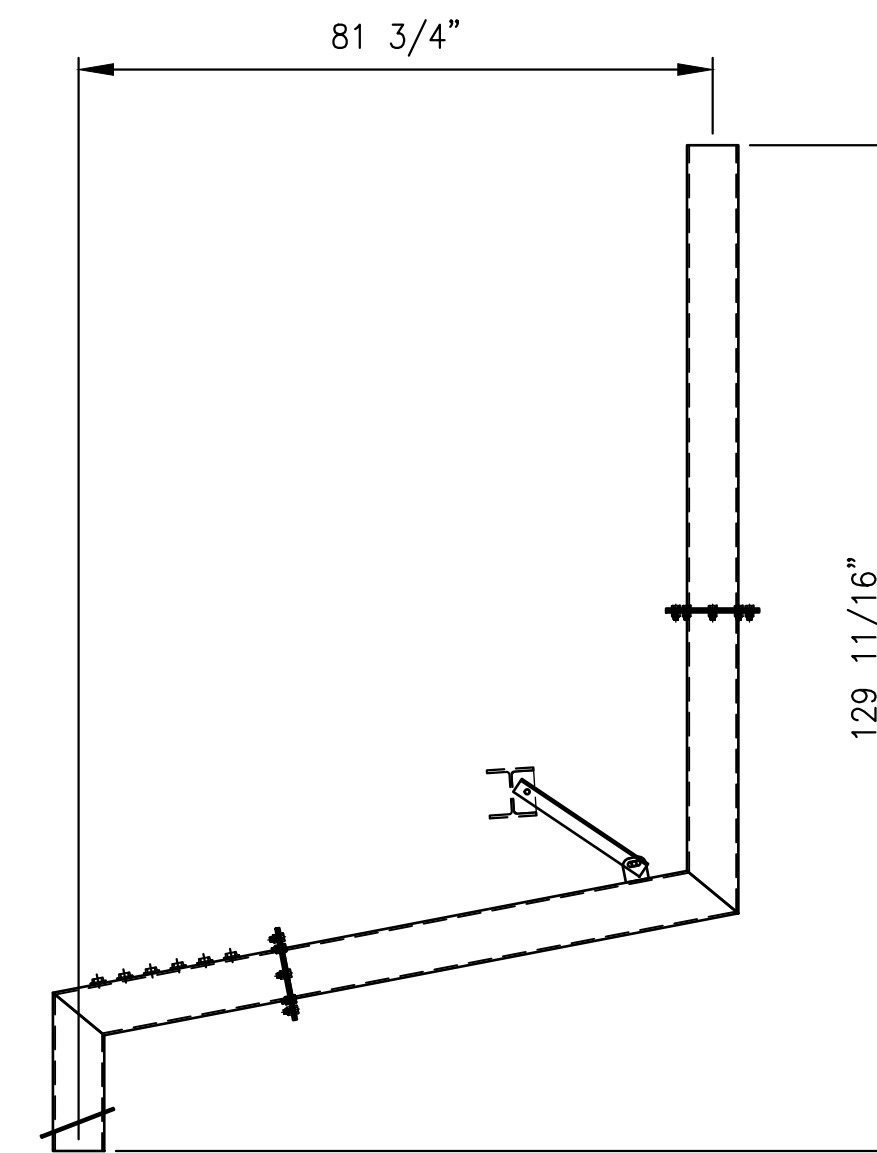
SIDE ELEVATION



END ELEVATION

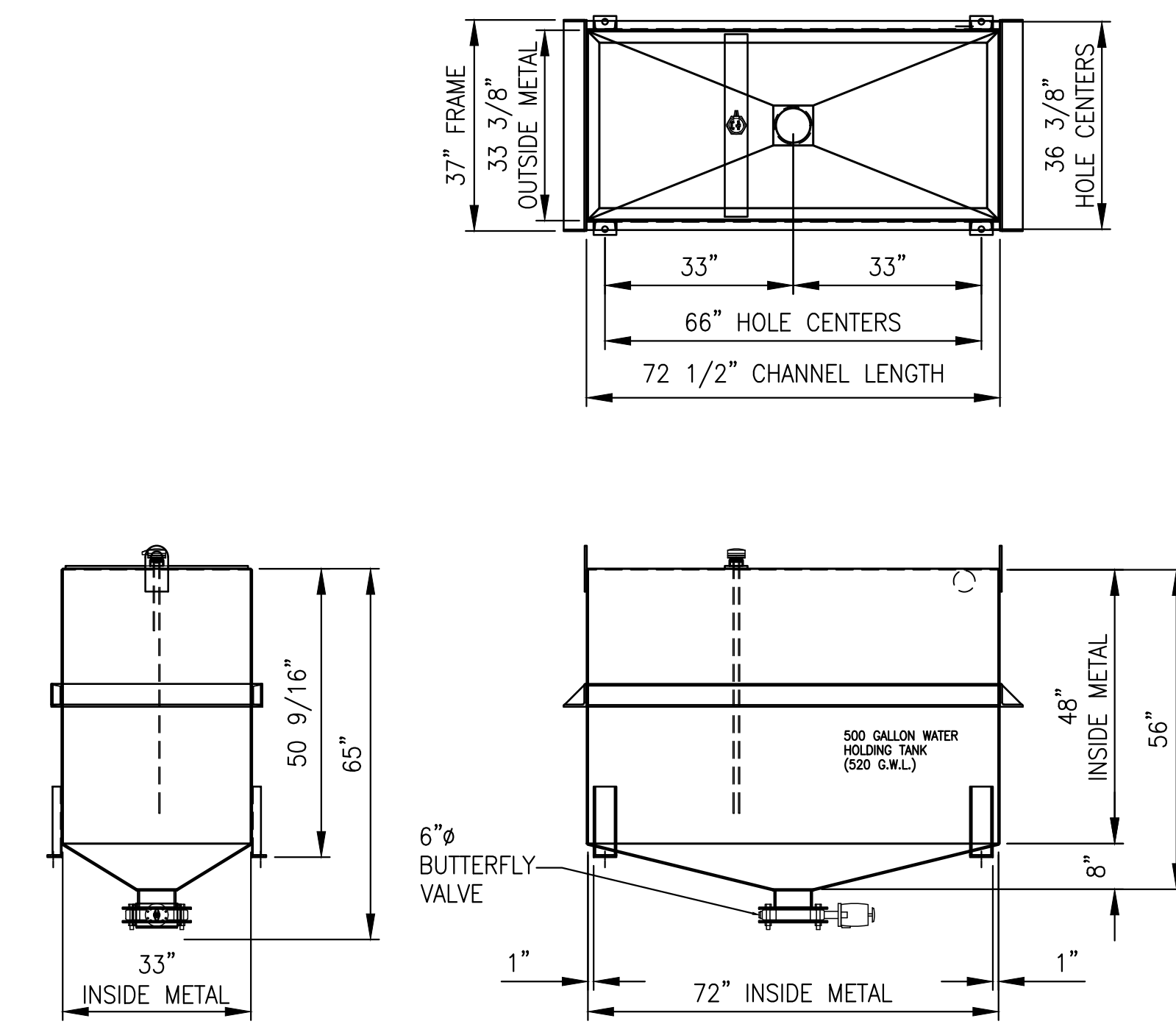


TELESCOPIC BOOT ADDITION DETAIL  
12" TRAVEL FOR 36" CONVEYOR

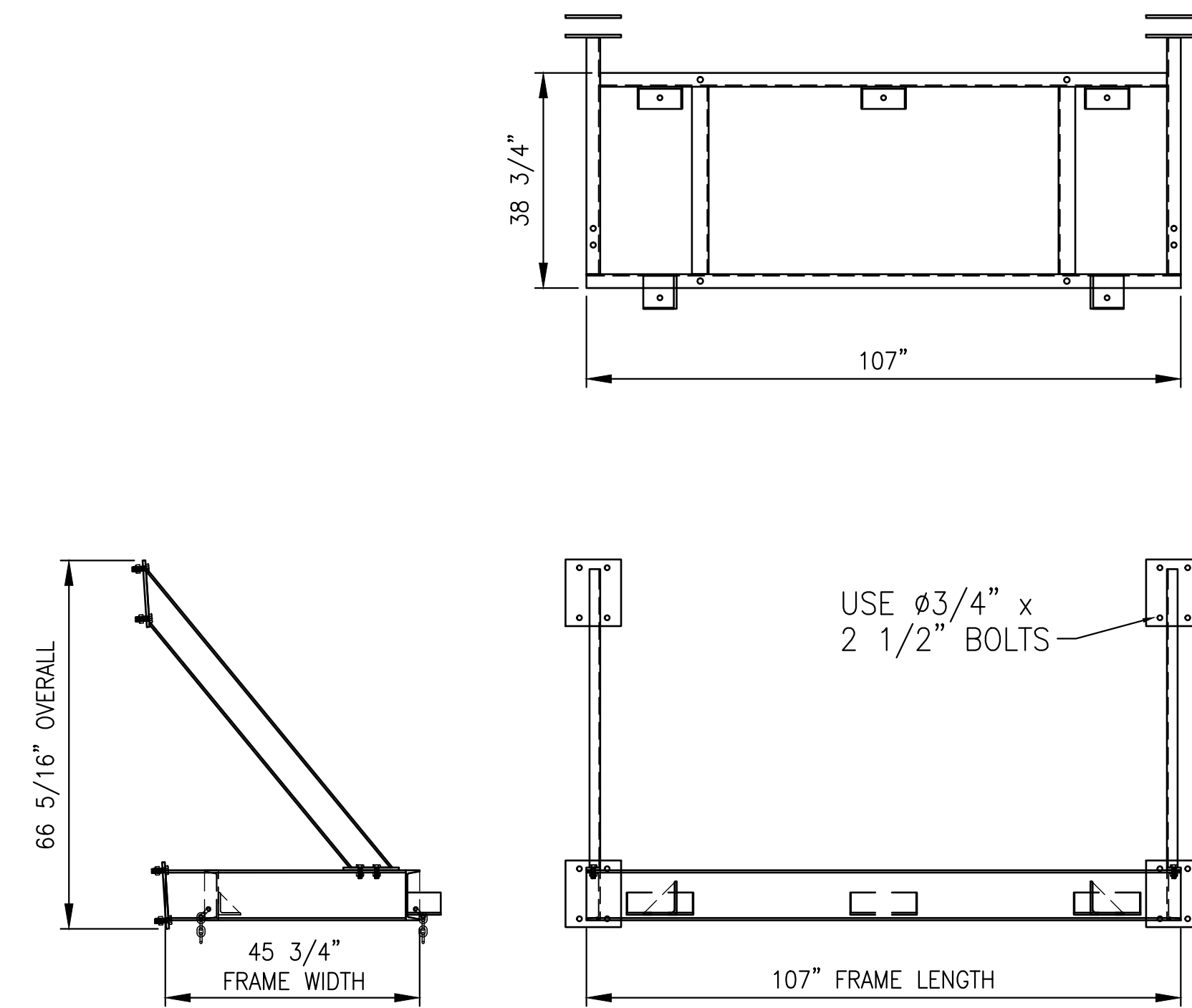


6" WATER MANIFOLD ADDITION - DETAIL

NOTE: ALL OF THESE ADDITIONS ARE TO BE INSTALLED BY THE CUSTOMER IN THE FIELD



500 GALLON WATER TANK ADDITION - DETAIL



WATER TANK SUPPORT FRAME ADDITION - DETAIL

**Stephens**  
Manufacturing Co., Inc.

711 W. 4th STREET  
TOMPKINSVILLE, KY. 42167  
PHONE: (270) 487-6774  
QUALITY CONCRETE PRODUCTS SINCE 1957

**APPROVED**

PLEASE CHECK THIS DRAWING CAREFULLY AND MARK APPROPRIATE BOX:

APPROVED AS DRAWN  
 NOT APPROVED, RESUBMITAL REQ'D

CUSTOMER NOTE: NO FABRICATION WILL TAKE PLACE BY STEPHENS WITHOUT A SIGNED COPY WITH CUSTOMER APPROVAL.

Tim Knox via Email 03/04/2020  
SIGNATURE DATE

PLEASE RETURN SIGNED COPY TO ADDRESS ABOVE OR:  
E-MAIL: - OR - FAX: (270) 487-  
Thumes@stephenmfg.com

NO.	DATE	REVISION	CONFIDENTIAL DISCLOSURE THIS DRAWING IS THE EXCLUSIVE PROPERTY OF STEPHENS MANUFACTURING CO., INC. THE RECIPIENT ACCEPTS THAT ITS CONTENTS ARE CONFIDENTIAL AND MUST NOT BE COPIED OR SUBMITTED TO OUTSIDE PARTIES FOR USE OR EXAMINATION WITHOUT WRITTEN CONSENT.	DRAWN BY: TSH DATE: 03/02/2020 SCALE: N.T.S.	<b>Stephens</b> TOMPKINSVILLE, KY. 42167	TITLE: 500 GALLON WATER TANK, WATER TANK FRAME & TELESCOPIC BOOT ADDITIONS	JOB NO. 59102 SHEET NO. 4 OF 4	REV. NO. 2
2	03/05/20	UPDATED APPROVAL STAMP (TSH)						
1	03/04/20	ADDED WATER PIPE PER CHANGE ORDER (TSH)						