

USE GROUP OR SPACE DESCRIPTION	EXIT WIDTH		EXIT WIDTH (m)						
	(a)	(b)	(c)		(n)				
	AREA <sup>1</sup> PER OCCUPANT (TABLE 1004.1.2)	AREA <sup>1</sup> PER OCCUPANT (TABLE 1004.1.2)	EGRESS WIDTH PER OCCUPANT (TABLE 1005.1)	REQUIRED WIDTH (c/b) x c	ACTUAL WIDTH SHOWN ON PLANS	ACTUAL WIDTH SHOWN ON PLANS			
A-2	3,430	FIXED SEATING	90	N/A	.2	N/A	18.0"	N/A	105"
STORAGE	2,155	300 GROSS	8	N/A	.2	N/A	1.6"	N/A	54"
STAGE/SERVERS			10				2.0"		

- SEE TABLE 1004.1.2 TO DETERMINE WHETHER NET OR GROSS AREA IS APPLICABLE SEE DEFINITION "AREA, GROSS" AND "AREA, NET" (SECTION 1002, DEFINED IN CHAPTER 2)
- MINIMUM STAIRWAY WIDTH (SECTION 1011.2); MIN. CORRIDOR WIDTH (SECTION 1020.2); MIN. DOOR WIDTH (SECTION 1010.1.1)
- MINIMUM WIDTH OF EXIT PASSAGEWAY (SECTION 1024)
- SEE SECTION 1005.6 FOR CONVERGING EXITS.
- THE LOSS OF ONE MEANS OF EGRESS SHALL NOT REDUCE THE AVAILABLE CAPACITY TO LESS THAN 50% OF THE TOTAL REQUIRED (SECTION 1005.5)
- ASSEMBLY OCCUPANCIES (SECTION 1029)

FLOOR, ROOM OF SPACE DESIGNATION	EXIT REQUIREMENTS: NUMBER AND ARRANGEMENTS OF EXITS		TRAVEL DISTANCE		ARRANGEMENT MEANS OF EGRESS <sup>1,3</sup> (SECTION 1016-1021)	
	MINIMUM NO. OF EXITS REQ'D.	SHOWN ON PLANS	ALLOWABLE TRAVEL DISTANCE (TABLE 1017.2)	ACTUAL TRAVEL DISTANCE SHOWN ON PLANS	REQUIRED DISTANCE BETWEEN EXIT DOORS	ACTUAL DISTANCE SHOWN ON PLANS
A-2	2	2	200'	125'-0"	43'-6"	71'-6"
S-1	1	1	75'	48'-0"	N/A	N/A

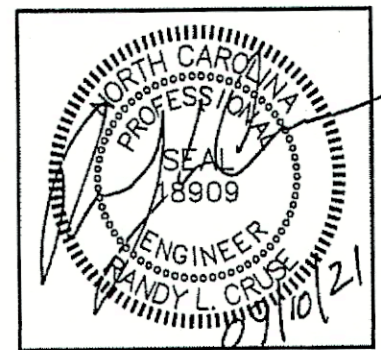
- CORRIDOR DEAD ENDS (SECTION 1020.4)
- BUILDINGS W/SINGLE EXITS (TABLE 1006.3.2(2)), SPACES W/ONE EXIT OR EXIT ACCESS DOORWAY (TABLE 1006.2.1)
- COMMON PATH OF TRAVEL (SECTION 1029.8)

MAXIMUM CALCULATED OCCUPANT LOAD CAPACITY EACH EXIT DOOR CAN ACCOMMODATE BASED ON EGRESS WIDTH (1005.1)

54" CLEAR WIDTH DIVIDED BY .2" = 270 OCCUPANTS  
CALCULATED OCCUPANCY PER EXIT = 8 PEOPLE  
CALCULATED OCCUPANCY DOES NOT EXCEED MAXIMUM CAPACITY OF EXIT.

35" CLEAR WIDTH DIVIDED BY .2" = 175 OCCUPANTS  
CALCULATED OCCUPANCY PER EXIT = 46 PEOPLE  
CALCULATED OCCUPANCY DOES NOT EXCEED MAXIMUM CAPACITY OF EXIT.

35" CLEAR WIDTH DIVIDED BY .2" = 175 OCCUPANTS  
CALCULATED OCCUPANCY PER EXIT = 46 PERSON  
CALCULATED OCCUPANCY DOES NOT EXCEED MAXIMUM CAPACITY OF EXIT.



NOTE:  
2ND FLOOR IS UNOCCUPIED AND TREATED AS ATTIC SPACE FOR THE PURPOSES OF THIS TENANT.

- KEY NOTES:**
- INFILL OPENING WITH 8" CMU BLOCK TO MAINTAIN 2 HR FIRE RATING.
  - INSTALL DUCT FIRE DAMPER. (1-1/2 HR RATED)
  - REPLACE EXISTING DOORS RATED DOORS. (1-1/2 HR RATED)
  - INFILL OPENING WITH 12" BLOCK TO MAINTAIN 2 HOUR FIRE RATING.
  - INFILL OPENING IN FIRE PARTITION WALL (ABOVE LOWER ROOF) WITH 12" CMU TO MAINTAIN 2 HR. FIRE RATING.
  - NO WALL-OPEN TO EXTERIOR
  - ENTRANCE ONLY; NOT AN EXIT

**OCCUPANCY CLASSIFICATION:**  
A-2, TAVERNS & BARS  
BUILDING AREA:

SPACE	SQ. FT.	OCCUPANCY TYPE
A	475	S-1
B	1,200	S-1
C	480	S-1
D	2,910	A-2
E	520	A-2
TOTAL	5,585	

S-1 AREA = 2,155  
A-2 AREA = 3,430  
DANCE AREA = 188

- CONCLUSIONS BASED ON THIS LAYOUT:**
- FIRE AREA IS LESS THAN 5,000 SQ. FT.
  - OCCUPANCY IS LESS THAN 300 PEOPLE.
  - DANCE FLOOR AREA IS LESS THAN 10% OF A-2 AREA.
- TOTAL A-2 AREA USED FOR DANCE FLOOR AREA % CALCULATION: SEE DRAWING THIS SHEET  
% DANCE FLOOR AREA = 188/2541 = 7.4%. THIS IS LESS THAN 10% OF GROUP A-2 AREA.  
NIGHT CLUB CLASSIFICATION DOES NOT APPLY BASED ON THIS LAYOUT.

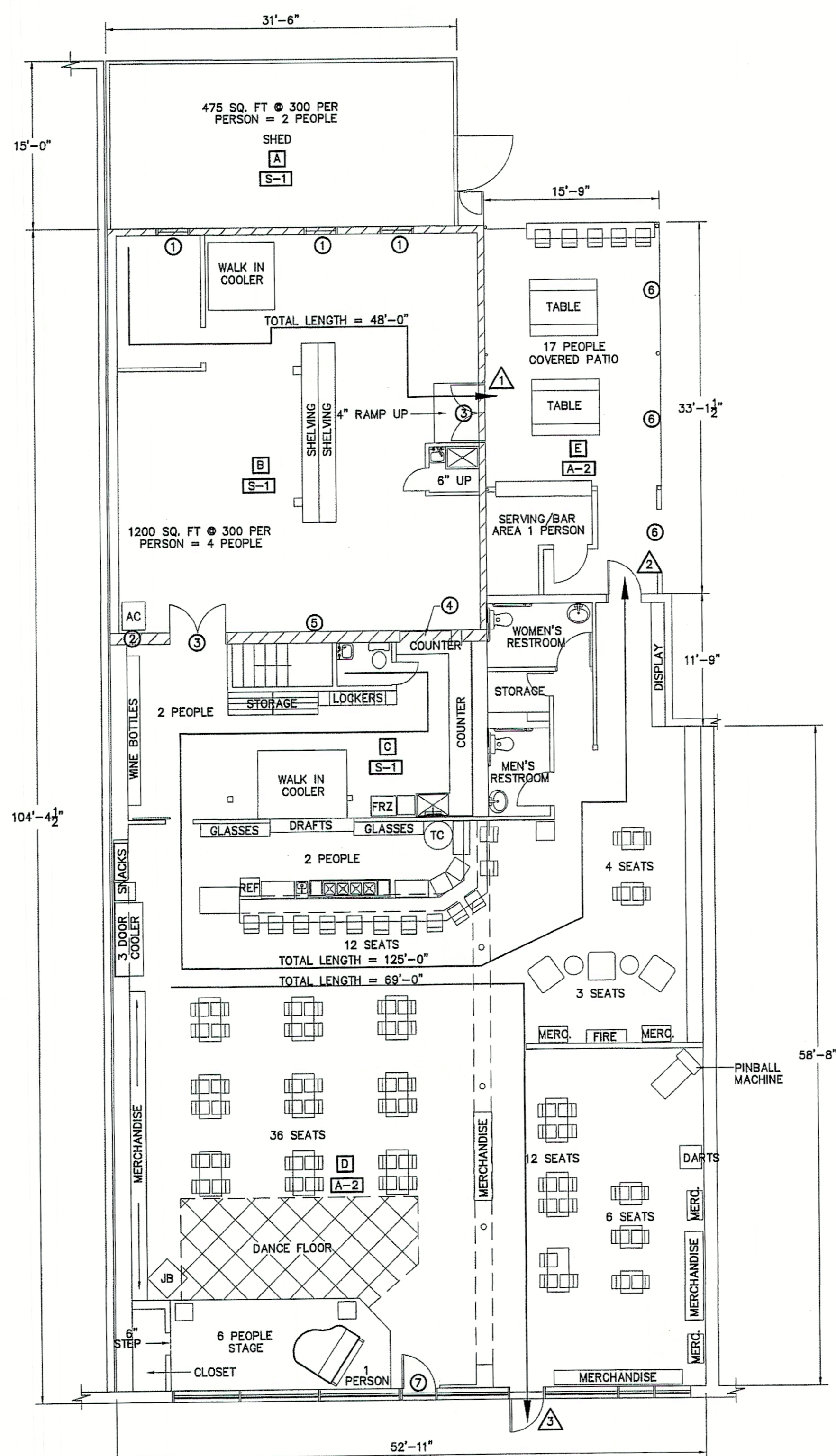
**PLUMBING FIXTURE REQUIREMENTS (TABLE 2902.1)**

USE	WATERCLOSETS			URINALS	LAVATORIES			SERVICE SINK	DRINKING FOUNTAINS	
	MALE	FEMALE	UNISEX		MALE	FEMALE	UNISEX		REGULAR	ACCESSIBLE
SPACE REQUIRED	2	2	0		1	1	0	1	N/A	N/A
PROVIDED	1	1	0		1	1	0	1	N/A	N/A

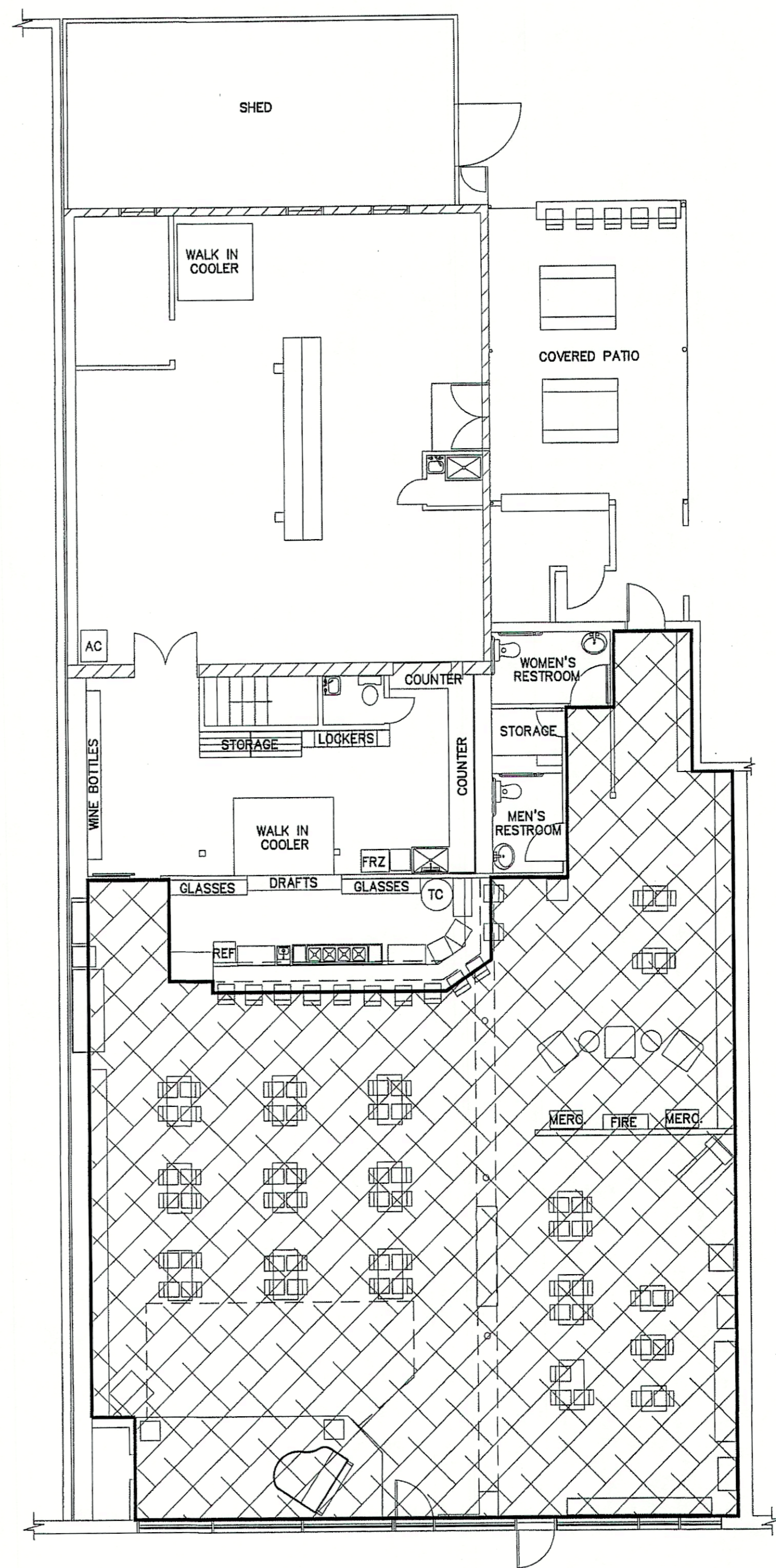
\*BASED ON EXISTING RESTROOM CAPACITY, THE MAXIMUM OCCUPANT LOAD IN THIS FACILITY IS 80 PEOPLE.

**LEGEND**  
2 HOUR RATED WALL

**NOTE:**  
ALL CALCULATIONS AND ASSUMPTIONS ARE BASED ON THIS LAYOUT. ANY CHANGES OR DEVIATIONS IN THE ASSUMPTIONS WILL REQUIRE FURTHER REVIEW FOR CODE COMPLIANCE.



**LIFE SAFETY/FLOOR/FIRE AREA PLAN**  
SCALE: 1/8" = 1'-0"

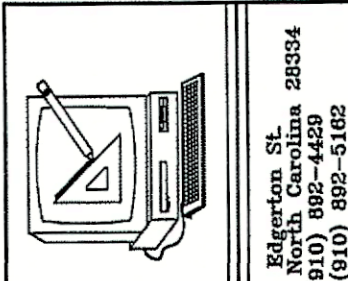


**TOTAL A-2 AREA USED FOR % DANCE FLOOR CALCULATION**  
SCALE: 1/8" = 1'-0"

**STOUTS & ALES**  
30 SOUTH MCKINLEY STREET  
COATS, NORTH CAROLINA 27521

**REVISIONS**

NO.	



**Cruse and Associates, P.A.**  
414 E. Washington St.  
Raleigh, NC 27601  
TEL: (919) 882-4439  
FAX: (919) 882-5165  
LICENSE NO.: C-1721

THESE DOCUMENTS ARE INSTRUMENTS OF SERVICE AND AS SUCH THESE DRAWINGS, DESIGNS, AND DESIGN CONCEPTS PRESENTED REMAIN THE PROPERTY OF THE ENGINEER. PUBLISH OR DUPLICATE THE DRAWINGS OR DESIGNS ONLY WITH THE WRITTEN PERMISSION OF THE ENGINEER.  
© COPY RIGHT

DATE 09-10-21  
DRAWN BY BAM  
JOB NO. 21-46

SHEET NO.  
**F-1 OF 1**