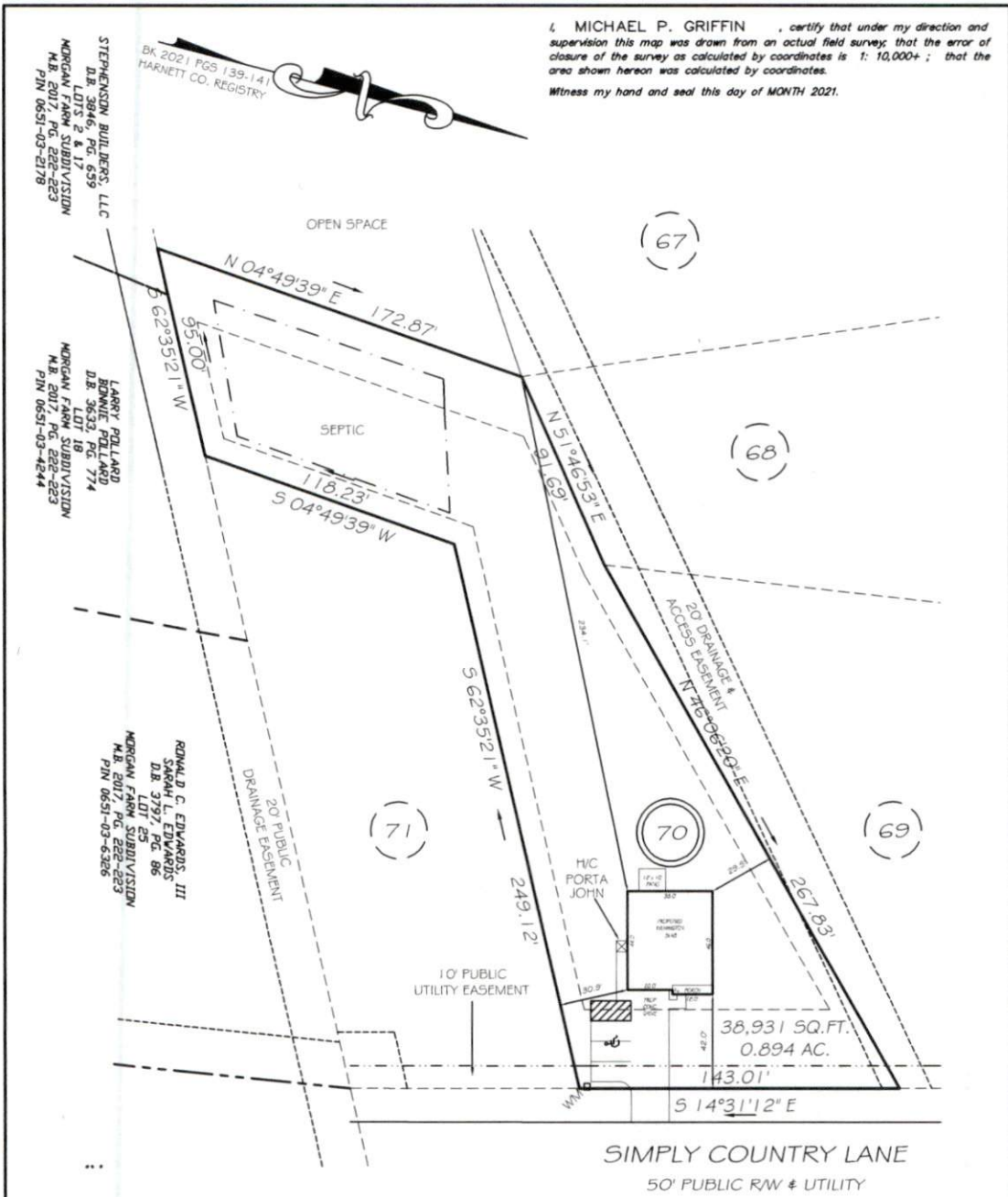


I, MICHAEL P. GRIFFIN, certify that under my direction and supervision this map was drawn from an actual field survey; that the error of closure of the survey as calculated by coordinates is 1: 10,000+; that the area shown hereon was calculated by coordinates.
 Witness my hand and seal this day of MONTH 2021.



STEPHENSON BUILDERS, LLC
 D.B. 07/16/16, PG. 539
 MORGAN FARM SUBDIVISION
 M.B. 2017, PG. 222-223
 PIN 0651-03-2178

LARRY FOLLARD
 BONNIE FOLLARD
 D.B. 38/05/18, PG. 714
 MORGAN FARM SUBDIVISION
 M.B. 2017, PG. 222-223
 PIN 0651-03-4244

RONALD G. EDWARDS, III
 SARAH L. EDWARDS
 D.B. 37/97, PG. 86
 LOT 25
 MORGAN FARM SUBDIVISION
 M.B. 2017, PG. 222-223
 PIN 0651-03-6326

IMPERVIOUS AREAS

HOUSE	1708 SQ. FT.
DRIVE & WALKS	1538 SQ. FT.
PATIO	120 SQ. FT.
TOTAL	3366 SQ. FT.
ALLOWED	5500 SQ. FT.

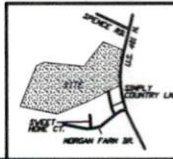
REVISION: BACK 5' 4/8/21
 REVISION: PARKING 4/8/21
 REVISION: PARKING 4/7/21

SETBACKS

FRONT	35'
REAR	25'
SIDE	10'
CORNER SIDE	20'

LEGEND

EIP	EXISTING IRON PIPE	FES	FLARED END SECTION
IP5	IRON PIPE SET	WM	WATER METER
RW	RIGHT OF WAY	CO	CLEAN OUT
N/F	NOW OR FORMERLY	FH	FIRE HYDRANT
EIS	EXISTING IRON STAKE	CB	CATCH BASIN



PRELIMINARY
 NOT FOR RECORDATION,
 SALES OR CONVEYANCE

GRiffin LAND SURVEYING, INC.
 P.O. BOX 148
 FUQUAY-VARINA, NC 27526
 (919) - 567-1963

PLOT PLAN
 FOR
D.R. HORTON
 MORGAN NORTH
 LOT 70
 SIMPLY COUNTRY LANE
 NORTH CAROLINA
 HARNETT CO. HECTOR'S CREEK TWSHP

DRAWN BY	NMF	DATE	4/7/21
CHECKED BY	MPG	SCALE	1" = 60'