

RCP
SCALE: 1/8"=1'-0"

SPAN OF TRAPEZE (Schedule 10)	NOMINAL PIPE SIZE SUPPORTED							
	1"	1-1/4"	1-1/2"	2"	2-1/2"	3"	4"	6"
1 FT. 6 IN.	1"	1"	1"	1"	1"	1"	1-1/4"	1-1/4"
2 FT. 0 IN.	1"	1"	1"	1-1/4"	1-1/4"	1-1/4"	1-1/4"	1-1/2"
2 FT. 6 IN.	1-1/4"	1-1/4"	1-1/4"	1-1/4"	1-1/4"	1-1/4"	1-1/2"	2"
3 FT. 0 IN.	1-1/4"	1-1/4"	1-1/4"	1-1/4"	1-1/2"	1-1/2"	1-1/2"	2"
4 FT. 0 IN.	1-1/2"	1-1/2"	1-1/2"	2"	2"	2"	2"	2-1/2"
5 FT. 0 IN.	2"	2"	2"	2"	2"	2"	2-1/2"	2-1/2"
6 FT. 0 IN.	2"	2"	2"	2"	2"	2"	2-1/2"	3"
7 FT. 0 IN.	2"	2"	2"	2-1/2"	2-1/2"	2-1/2"	2-1/2"	3"
8 FT. 0 IN.	2-1/2"	2-1/2"	2-1/2"	2-1/2"	2-1/2"	2-1/2"	2-1/2"	3"
9 FT. 0 IN.	2-1/2"	2-1/2"	2-1/2"	2-1/2"	2-1/2"	2-1/2"	3"	4"
10 FT. 0 IN.	2-1/2"	2-1/2"	2-1/2"	2-1/2"	2-1/2"	3"	3"	4"

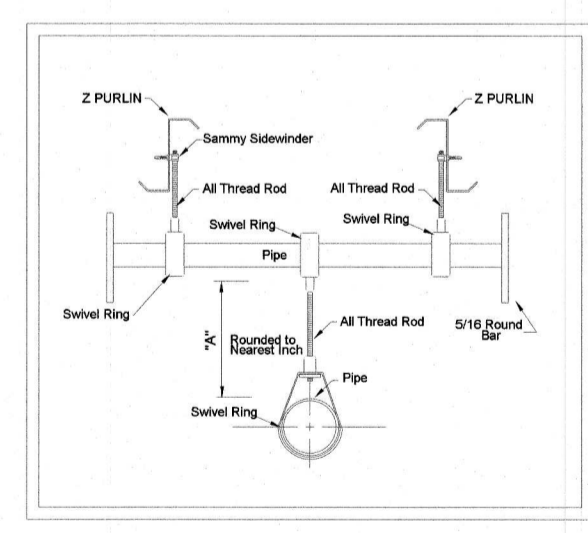
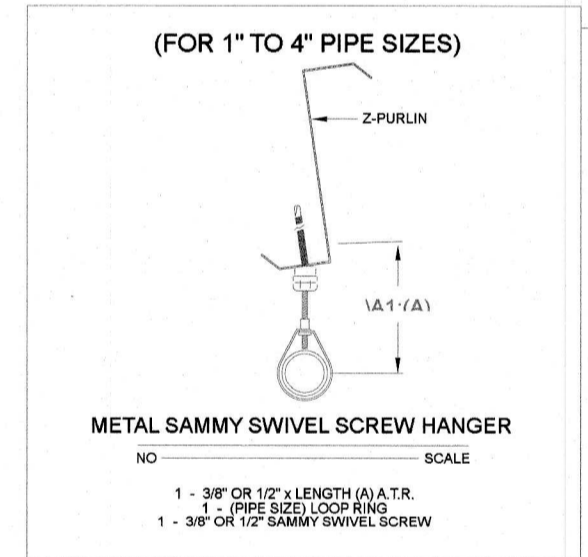
NOMINAL PIPE SIZE	MAXIMUM DISTANCE BETWEEN HANGERS								
	3/4"	1"	1-1/4"	1-1/2"	2"	2-1/2"	3"	4"	6"
BLAZEMASTER CPVC	5' 6"	6' 0"	6' 6"	7' 0"	8' 0"	9' 0"	10' 0"	N/A	N/A
THREADABLE LIGHTWALL	N/A	12' 0"	12' 0"	12' 0"	12' 0"	12' 0"	12' 0"	N/A	N/A
STEEL PIPE (10' 40')	N/A	12' 0"	12' 0"	15' 0"	15' 0"	15' 0"	15' 0"	15' 0"	15' 0"

100 PSI STATIC PRESSURE ON SYSTEM REQUIRES UP-LIFT RESTRAINT WITHIN 12 INCHES HORIZONTALLY OF HEAD FOR ARM-OVERS AND END OF BRANCH LINE

THE UNSUPPORTED LENGTH BETWEEN THE END SPRINKLER AND THE LAST HANGER ON THE LINE SHALL NOT EXCEED 36" FOR 1" PIPE, 48" FOR 1-1/4" PIPE AND 80" FOR 1-1/2" PIPE OR LARGER

THE CUMULATIVE HORIZONTAL LENGTH OF AN UNSUPPORTED ARM-OVER TO A SPRINKLER, SPRINKLER DROP, OR SPRIG-UP SHALL NOT EXCEED 24"

Symbol	Manufacturer	SIN	Model	Quantity	K-Factor	Type	Size	Response	Finish	Temperature	Note
△	Generic	VK-605	M	2	5.6	Sidewall	1/2"	Quick	Brass	155°F	EC Horizontal Sidewall
○	Viking	VK-302	M	7	5.8	Pendent	1/2"	Quick	Chrome	155°F	Chrome Pendent
●	Tyco	TY-8137	EC-11	20	11.2	Upright	3/4"	Quick	Brass	155°F	Brass Upright
▲	Tyco	ESFR-17		198	16.8	Upright	3/4"	Standard	Brass	212°F	ESFR Upright
				Total =	227						



NOTES :

- ALL HANGERS TO BE SIZED AND SPACED PER N.F.P.A.-13
- ALL ARM-OVERS LONGER THAN 2'-0" TO HAVE A N.F.P.A.-13 APPROVED HANGER
- ALL RATED FIRE WALLS SHALL BE FIRE STOPPED AS PER UL GUIDELINES
- ALL NEW BREAKOVER PIPING SHALL BE 1" SCH-40 BLACK STEEL

NATURAL STONE DESIGN

J & D SPRINKLER CO. INC.
315 W. MAIN ST. CLAYTON, NC 27520
Ph: (919) 553-2356 Fx: (919) 359-0622
WEBSITE : JDSPRINKLER.COM

SHEET TITLE:
FIRE SPRINKLER
ROOF LEVEL
& 2ND LEVEL
OFFICE RCP

This fire sprinkler planning and design drawing has been prepared in accordance with the International Fire Code, the General Statutes for J & D Sprinkler's evaluate and design drawings for fire sprinkler systems. The contractor must perform any and all installation work and other work performed in reliance on this drawing pursuant to the contract documents. No other person or entity is authorized to perform any work on this drawing or any copy thereof is strictly prohibited.

2013 J & D Sprinkler Co., Inc.



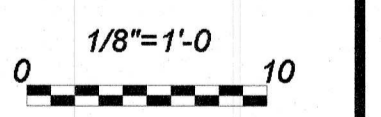
DANA GRAHAM
NC # 16269FS CERT # 71075
NICET LEVEL III

JASON GRAHAM
NC # 16269FS CERT # 121842
NICET LEVEL III

REVISION:
NO. DATE

Contract With:

Date: **6-7-21**



Job Number:
F21-086

Drawn By:
JEB

Sheet Number
FP-2 OF 4