



Emergency Responder Radio System Coverage Report Test Results

Date Prepared:	Aug 23, 2023
Test File:	NWH A100_20230504_130608
Test Location:	NWHES All Wings
	736 Rollins Road Fuquay-Varina, NC 27526
Technician:	Chris Jordan
FCC#:	987654321

Building: Building
Result: Pass

Test Report Summary

Channel/ Ch Group	Freq (MHz)	Technology	Band	Result	Area Points passed (%)	Critical Points passed (%)
Northwest Harnett: 4, 3, 2, 1	774.55625 773.81250 853.37500 852.61250	P25	Fuquay-Varina	Pass	112/112 (100%)	5/5 (100%)

Test Details			
Number of Wings/floors Tested:	6	Result Calculation:	By area per floor
Number of Areas Tested:	112	Area Pass Criteria:	95%
Number of Critical Points Tested:	5	Critical Points Pass Criteria:	99%
		Apply Adjacent Area Rule:	No

Equipment Configuration

Vendor	Application	Device	Calibration Expires	Antenna info
PCTEL	SeeHawk Touch rel 3.2.0.2	SeeGull IBflex Device rel 3.9.5.0 SN: 082103071	3-29-2025	

Threshold Settings

Measurement	DL Area Point	UL Area Point	DL Critical Point	UL Critical Point	Use for grading
P25 Power (RSSI)	-95.0 dBm	-95.0 dBm	-95.0 dBm	-95.0 dBm	Yes
P25 S/N (SINR)	20.0 dB	20.0 dB	22.0 dB	22.0 dB	No
P25 FBER	2.0 %	2.0 %	1.5 %	1.5 %	No
DAQ	3.0				Yes

Floors Result

Floor Plan	Northwest Harnett
NWH Area 100	Pass
NWH A200	Pass
NWH A300	Pass
NWH A400	Pass
NWH A500	Pass
NWH A600 2nd floor	Pass

Floor: NWH Area 100
Group: Northwest Harnett Channels: 4, 3, 2, 1
Result: Pass

Freq (MHz)	Tech	Band	Ant Gain	Cable Loss	Ph.	Type	Mod	NAC	Area Points passed (%)	Critical Points passed (%)
774.55625	P25	Fuquay-Varina	0.00	0.00	-	CC			18/18	0/0 (0%)
773.81250						CC			(100%)	
853.37500					1	CC	CQPSK			
852.61250						CC				



Grid	# of Areas	Area Size (sq. ft)	Area Width (ft)	Area Height (ft)	Ignore Area Color	Comments
1	20	726.26	27.56	26.35	Black	



Floor: NWH Area 100
Group: Northwest Harnett Channels: 4, 3, 2, 1

Reference Point Report

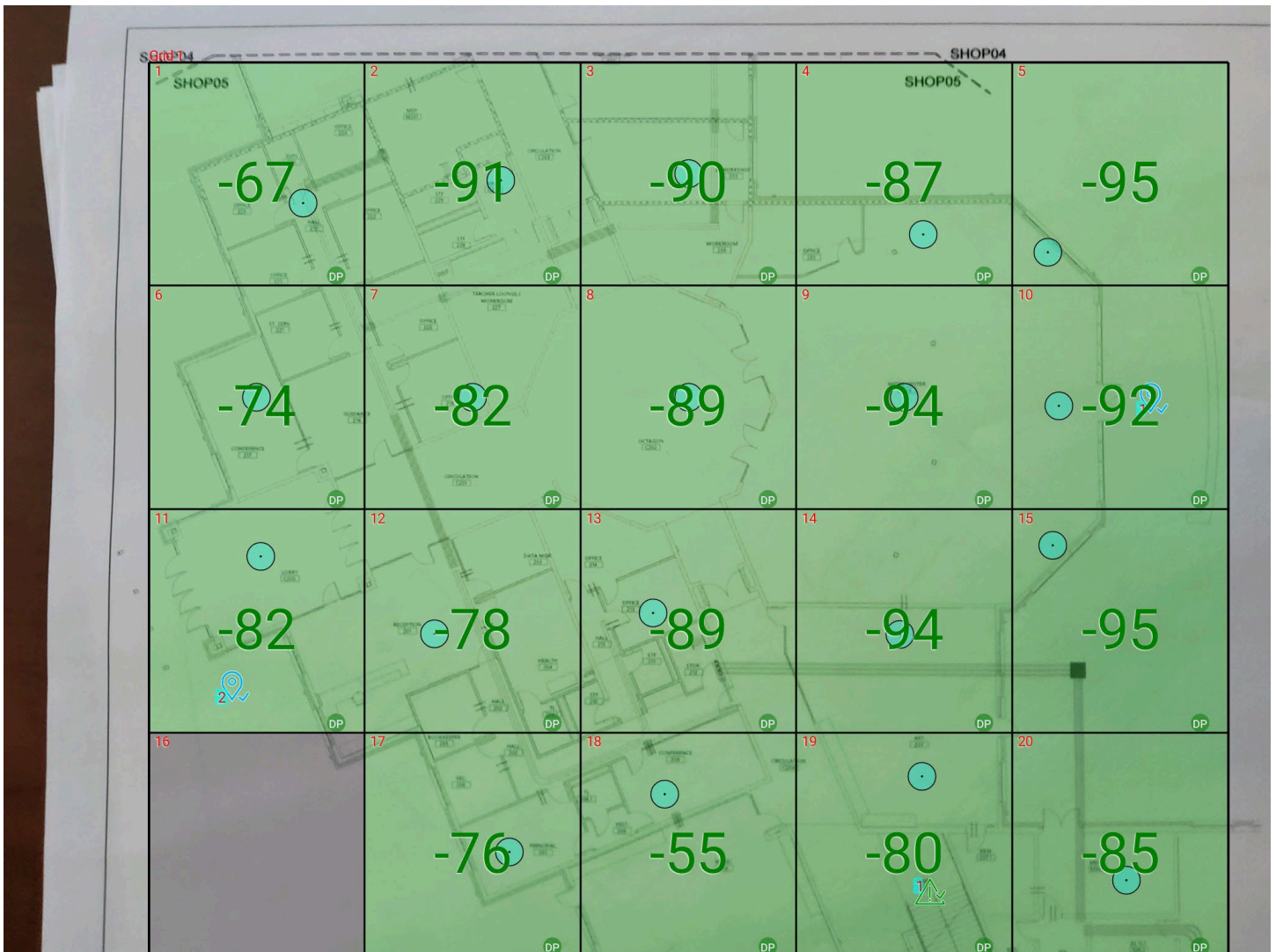
Reference Point	Power (dBm)	DL S/N (dB)	DL FBER (%)	Selected	Comment
1	-80.85	26.53	2.25		
2	-81.07	24.95	1.10		
3	-78.23	25.62	0.72		

Area Report

Grid	Area	DL Power (dBm)	Result	DL Loss (dB)	Comment
1	1	-74.37	Pass		
1	2	-74.24	Pass		
1	3	-94.62	Pass		
1	4	-75.93	Pass		
1	5	-94.73	Pass		
1	6	-78.01	Pass		
1	7	-64.98	Pass		
1	8	-83.51	Pass		
1	9	-79.59	Pass		
1	10	-82.26	Pass		
1	11	-79.73	Pass		
1	12	-94.73	Pass		
1	13	-74.00	Pass		
1	14	-83.96	Pass		
1	15	-94.87	Pass		
1	16	NT	NT		
1	17	NT	NT		
1	18	-80.99	Pass		
1	19	-93.92	Pass		
1	20	-70.68	Pass		

Floor: NWH A200
Group: Northwest Harnett Channels: 4, 3, 2, 1
Result: Pass

Freq (MHz)	Tech	Band	Ant Gain	Cable Loss	Ph.	Type	Mod	NAC	Area Points passed (%)	Critical Points passed (%)
774.55625	P25	Fuquay-Varina	0.00	0.00	-	CC	_____	___	19/19	1/1 (100%)
773.81250						CC	_____	___	(100%)	
853.37500					1	CC	CQPSK	___		
852.61250						CC	_____	___		



Grid	# of Areas	Area Size (sq. ft)	Area Width (ft)	Area Height (ft)	Ignore Area Color	Comments
1	20	995.83	31.02	32.11	Black	



Floor: NWH A200
Group: Northwest Harnett Channels: 4, 3, 2, 1

Reference Point Report

Reference Point	Power (dBm)	DL S/N (dB)	DL FBER (%)	Selected	Comment
1	-88.93	19.28	4.20		
2	-80.22	20.00	0.54		

Critical Point Report

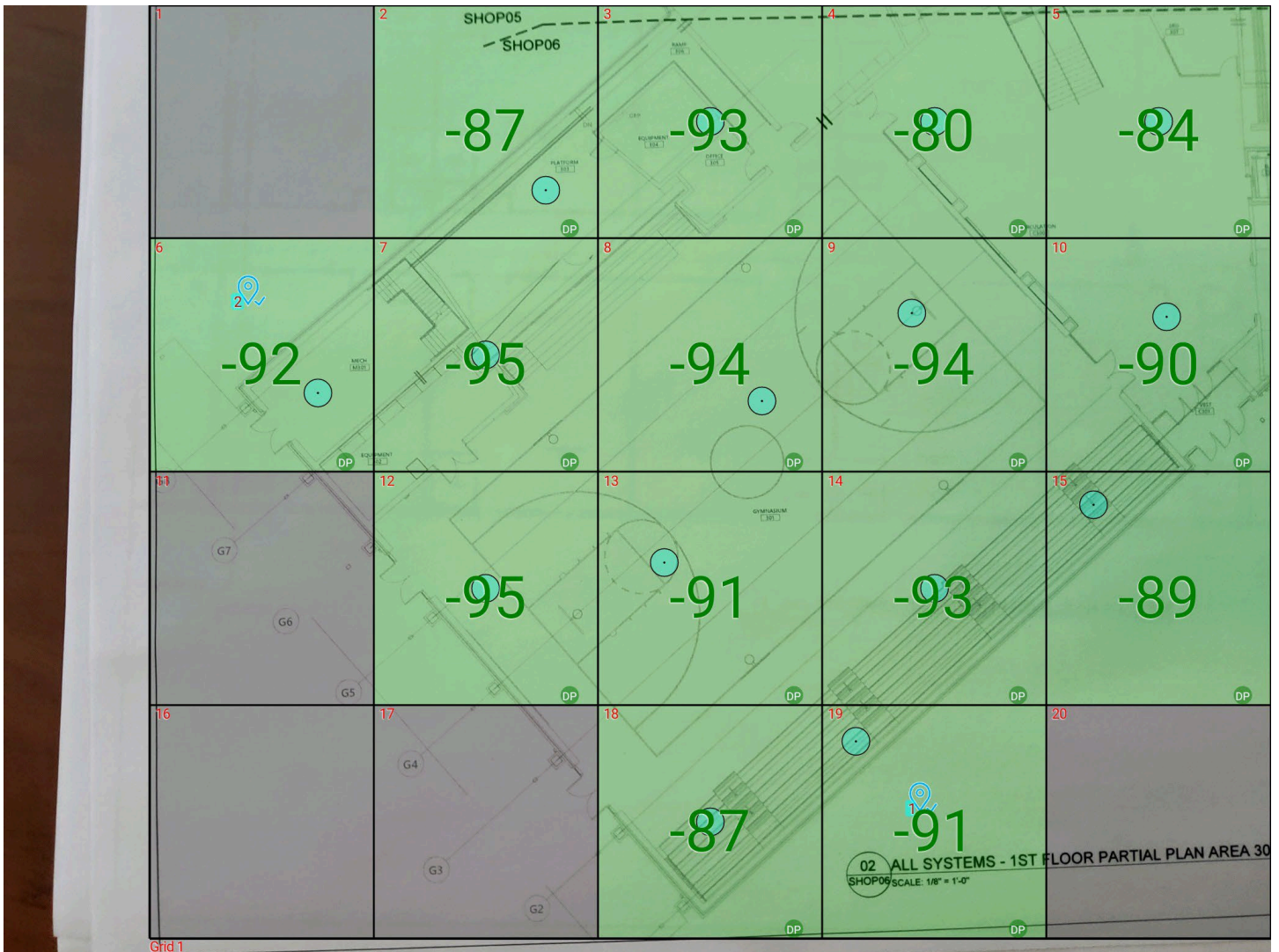
Critical Point	DL Power (dBm)	DL S/N (dB)	DL FBER (%)	DL DAQ	UL Power (dBm)	UL S/N (dB)	UL FBER (%)	UL DAQ	Result	DL Loss (dB)	Comment
1	-90.82	7.88							Pass		

Area Report

Grid	Area	DL Power (dBm)	Result	DL Loss (dB)	Comment
1	1	-66.91	Pass		
1	2	-90.51	Pass		
1	3	-89.51	Pass		
1	4	-86.30	Pass		
1	5	-94.50	Pass		
1	6	-73.41	Pass		
1	7	-81.94	Pass		
1	8	-88.99	Pass		
1	9	-93.86	Pass		
1	10	-91.65	Pass		
1	11	-81.44	Pass		
1	12	-77.25	Pass		
1	13	-88.61	Pass		
1	14	-93.71	Pass		
1	15	-94.92	Pass		
1	16	NT	NT		
1	17	-75.80	Pass		
1	18	-54.94	Pass		
1	19	-79.09	Pass		
1	20	-84.11	Pass		

Floor: NWH A300
Group: Northwest Harnett Channels: 4, 3, 2, 1
Result: Pass

Freq (MHz)	Tech	Band	Ant Gain	Cable Loss	Ph.	Type	Mod	NAC	Area Points passed (%)	Critical Points passed (%)
774.55625	P25	Fuquay-Varina	0.00	0.00	-	CC			15/15	0/0 (0%)
773.81250					-	CC			(100%)	
853.37500					1	CC	CQPSK			
852.61250					-	CC				



Grid	# of Areas	Area Size (sq. ft)	Area Width (ft)	Area Height (ft)	Ignore Area Color	Comments
1	20	3286.60	85.70	38.35	Black	



Floor: NWH A300
Group: Northwest Harnett Channels: 4, 3, 2, 1

Reference Point Report

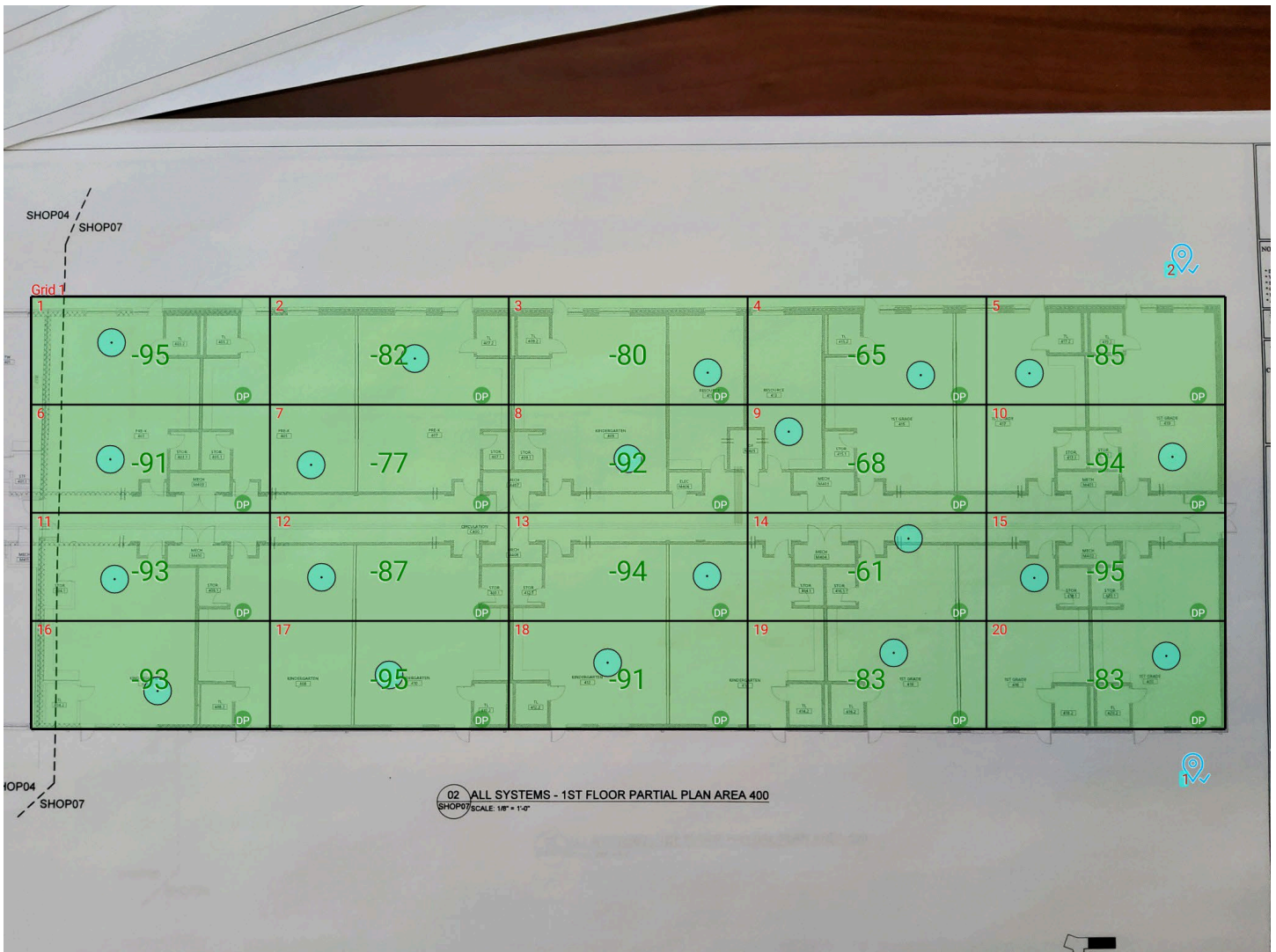
Reference Point	Power (dBm)	DL S/N (dB)	DL FBER (%)	Selected	Comment
1	-80.85	17.26	0.45		
2	-81.10	25.56	1.17		

Area Report

Grid	Area	DL Power (dBm)	Result	DL Loss (dB)	Comment
1	1	NT	NT		
1	2	-86.69	Pass		
1	3	-92.94	Pass		
1	4	-79.95	Pass		
1	5	-83.01	Pass		
1	6	-91.18	Pass		
1	7	-94.50	Pass		
1	8	-93.79	Pass		
1	9	-93.47	Pass		
1	10	-89.65	Pass		
1	11	NT	NT		
1	12	-94.35	Pass		
1	13	-90.81	Pass		
1	14	-92.24	Pass		
1	15	-88.30	Pass		
1	16	NT	NT		
1	17	NT	NT		
1	18	-86.88	Pass		
1	19	-90.84	Pass		
1	20	NT	NT		

Floor: NWH A400
Group: Northwest Harnett Channels: 4, 3, 2, 1
Result: Pass

Freq (MHz)	Tech	Band	Ant Gain	Cable Loss	Ph.	Type	Mod	NAC	Area Points passed (%)	Critical Points passed (%)
774.55625	P25	Fuquay-Varina	0.00	0.00	-	CC			20/20	0/0 (0%)
773.81250						CC			(100%)	
853.37500					1	CC	CQPSK			
852.61250						CC				



Grid	# of Areas	Area Size (sq. ft)	Area Width (ft)	Area Height (ft)	Ignore Area Color	Comments
1	20	814.77	42.46	19.19	Black	



Floor: NWH A400
Group: Northwest Harnett Channels: 4, 3, 2, 1

Reference Point Report

Reference Point	Power (dBm)	DL S/N (dB)	DL FBER (%)	Selected	Comment
1	-92.52	31.29	1.20		
2	-80.75	26.00	1.08		

Area Report

Grid	Area	DL Power (dBm)	Result	DL Loss (dB)	Comment
1	1	-94.89	Pass		
1	2	-81.66	Pass		
1	3	-79.16	Pass		
1	4	-64.81	Pass		
1	5	-84.04	Pass		
1	6	-90.57	Pass		
1	7	-76.46	Pass		
1	8	-91.97	Pass		
1	9	-67.24	Pass		
1	10	-93.69	Pass		
1	11	-92.55	Pass		
1	12	-86.09	Pass		
1	13	-93.13	Pass		
1	14	-60.34	Pass		
1	15	-94.44	Pass		
1	16	-92.64	Pass		
1	17	-94.82	Pass		
1	18	-90.10	Pass		
1	19	-82.26	Pass		
1	20	-82.63	Pass		

Floor: NWH A500
Group: Northwest Harnett Channels: 4, 3, 2, 1
Result: Pass

Freq (MHz)	Tech	Band	Ant Gain	Cable Loss	Ph.	Type	Mod	NAC	Area Points passed (%)	Critical Points passed (%)
774.55625	P25	Fuquay-Varina	0.00	0.00	-	CC			20/20	2/2 (100%)
773.81250						CC			(100%)	
853.37500					1	CC	CQPSK			
852.61250						CC				



Grid	# of Areas	Area Size (sq. ft)	Area Width (ft)	Area Height (ft)	Ignore Area Color	Comments
1	20	1136.33	54.16	20.98	Black	



Floor: NWH A500
Group: Northwest Harnett Channels: 4, 3, 2, 1

Reference Point Report

Reference Point	Power (dBm)	DL S/N (dB)	DL FBER (%)	Selected	Comment
1	-76.20	24.68	1.44		
2	-77.20	16.70	1.16		
3	-83.35	23.66	1.35		

Critical Point Report

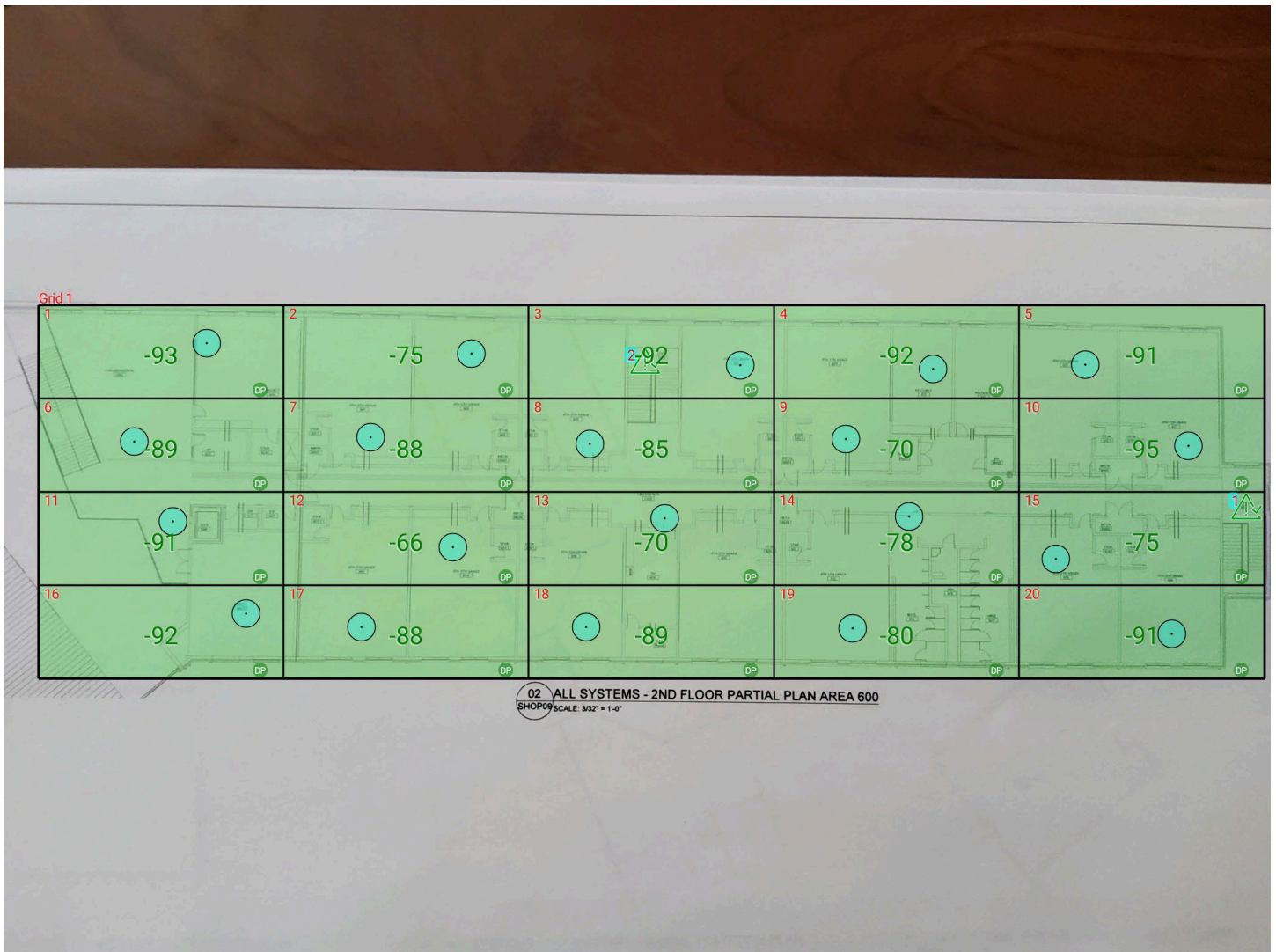
Critical Point	DL Power (dBm)	DL S/N (dB)	DL FBER (%)	DL DAQ	UL Power (dBm)	UL S/N (dB)	UL FBER (%)	UL DAQ	Result	DL Loss (dB)	Comment
1	-77.60								Pass		
2	-72.49								Pass		

Area Report

Grid	Area	DL Power (dBm)	Result	DL Loss (dB)	Comment
1	1	-74.18	Pass		
1	2	-90.64	Pass		
1	3	-78.39	Pass		
1	4	-87.28	Pass		
1	5	-82.62	Pass		
1	6	-94.52	Pass		
1	7	-84.46	Pass		
1	8	-76.14	Pass		
1	9	-75.71	Pass		
1	10	-89.92	Pass		
1	11	-69.22	Pass		
1	12	-77.42	Pass		
1	13	-67.83	Pass		
1	14	-64.81	Pass		
1	15	-73.27	Pass		
1	16	-77.47	Pass		
1	17	-90.63	Pass		
1	18	-78.34	Pass		
1	19	-86.04	Pass		
1	20	-82.14	Pass		

Floor: NWH A600 2nd floor
Group: Northwest Harnett Channels: 4, 3, 2, 1
Result: Pass

Freq (MHz)	Tech	Band	Ant Gain	Cable Loss	Ph.	Type	Mod	NAC	Area Points passed (%)	Critical Points passed (%)
774.55625	P25	Fuquay-Varina	0.00	0.00	-	CC			20/20	2/2 (100%)
773.81250					-	CC			(100%)	
853.37500					1	CC	CQPSK			
852.61250						CC				



Grid	# of Areas	Area Size (sq. ft)	Area Width (ft)	Area Height (ft)	Ignore Area Color	Comments
1	20	1438.16	61.51	23.38	Black	



Floor: NWH A600 2nd floor
Group: Northwest Harnett Channels: 4, 3, 2, 1

Critical Point Report

Critical Point	DL Power (dBm)	DL S/N (dB)	DL FBER (%)	DL DAQ	UL Power (dBm)	UL S/N (dB)	UL FBER (%)	UL DAQ	Result	DL Loss (dB)	Comment
1	-81.19								Pass		
2	-84.22								Pass		

Area Report

Grid	Area	DL Power (dBm)	Result	DL Loss (dB)	Comment
1	1	-92.54	Pass		
1	2	-74.01	Pass		
1	3	-91.01	Pass		
1	4	-91.16	Pass		
1	5	-90.39	Pass		
1	6	-88.06	Pass		
1	7	-87.36	Pass		
1	8	-84.55	Pass		
1	9	-69.55	Pass		
1	10	-94.19	Pass		
1	11	-90.48	Pass		
1	12	-65.80	Pass		
1	13	-69.78	Pass		
1	14	-77.92	Pass		
1	15	-74.02	Pass		
1	16	-91.73	Pass		
1	17	-87.85	Pass		
1	18	-88.95	Pass		
1	19	-79.66	Pass		
1	20	-90.42	Pass		



Additional Info

In accordance with NCFC 510.C, NCS has installed a BDA system to raise the building signal levels. The Post install readings we obtained at the site are noted above. These signal levels exceed NCFC 510 dB limits of 95dBm for down-link in all new construction.

In accordance with FCC part 90 this signal booster has been registered with the FCC. It is listed under
FRN: 003078159