

4

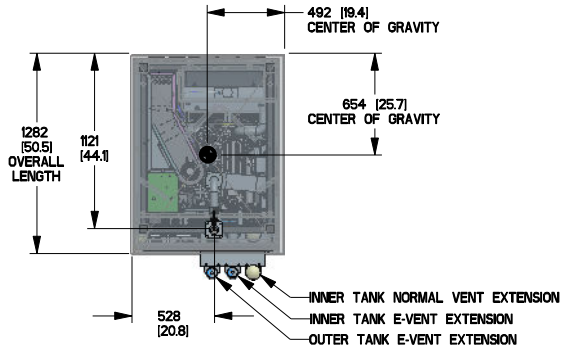
3

SH 1/2 REV 1 WINDCHILL VERSION 1.2

1

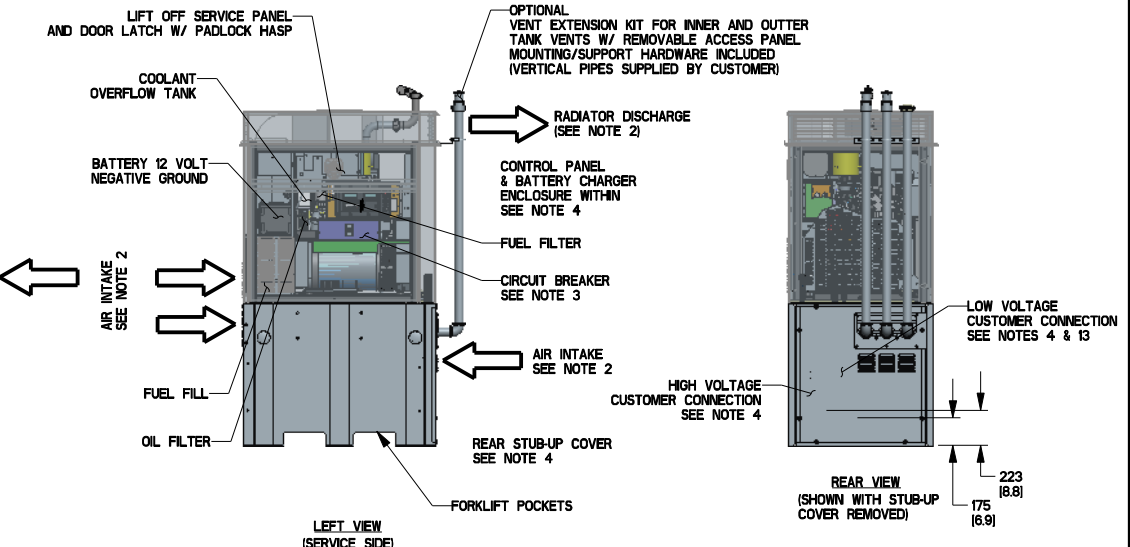
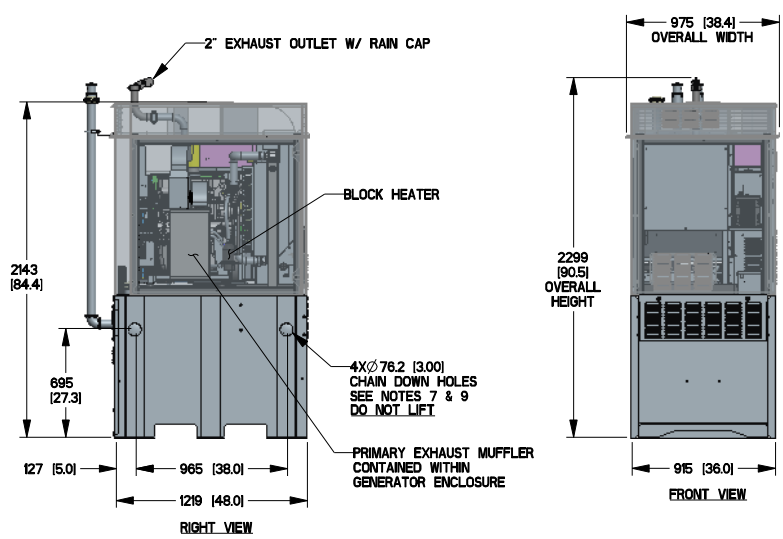
- NOTES:
- REFERENCE INSTALLATION GUIDE SUPPLIED WITH UNIT FOR CONCRETE PAD GUIDELINES.
  - ALLOW SUFFICIENT ROOM ON ALL SIDES OF THE GENERATOR FOR MAINTENANCE/SERVICE, INTAKE AIR FLOW, AND RADIATOR/EXHAUST DISCHARGE. THIS UNIT MUST BE INSTALLED IN ACCORDANCE WITH CURRENT APPLICABLE NFPA 37 AND NFPA 70 STANDARDS AS WELL AS ANY OTHER FEDERAL, STATE AND LOCAL CODES.
  - CONTROL PANEL / CIRCUIT BREAKER INFORMATION:
    - SEE SPECIFICATION SHEET OR OWNERS MANUAL
    - ACCESSIBLE WITH REMOVAL OF SERVICE PANEL
  - REMOVE THE REAR TANK STUB-UP COVER TO ACCESS THE STUB-UP AREAS AS FOLLOWS:
    - HIGH VOLTAGE CONNECTION INCLUDING AC LOAD LEAD CONDUIT CONNECTION NEUTRAL CONNECTION, BATTERY CHARGER 120 VOLT AC (0.5 AMP MAX) CONNECTION, AND ENGINE BLOCK HEATER 120 VOLT AC FACTORY WIRED CONNECTION.
    - LOW VOLTAGE CONNECTIONS INCLUDING TRANSFER SWITCH CONTROL WIRES AND ACCESSORY RELAY CONNECTION (QTY 4)
  - CENTER OF GRAVITY AND WEIGHT MAY CHANGE DUE TO UNIT OPTIONS.
  - EXHAUST SYSTEM MAXIMUM BACK PRESSURE: 24.0 INCHES OF H<sub>2</sub>O
  - REFERENCE OWNERS MANUAL FOR LIFTING WARNINGS.
  - MOUNTING BOLTS OR STUDS TO MOUNTING PAD SHALL BE 5/8-11 GRADE 5. (USE STANDARD SAE TORQUE SPECS)
  - CHAIN DOWN HOLES MUST BE PLUGGED AFTER INSTALLATION. PLUGS ARE PROVIDED AND ARE LOCATED IN THE LOOSE VENTS/FUEL FILL KIT.
  - STUB-UPS: BASE TANK REQUIRES ALL STUB-UPS TO BE IN REAR TANK STUB-UP AREA.
  - UNIT IS SHIPPED WITH FUEL SUPPLY AND RETURN LINES DISCONNECTED AND PLUGGED BETWEEN ENGINE AND FUEL TANK. THIS HAS BEEN DONE TO FACILITATE PRESSURE TESTING OF THE TANK IN THE FIELD. FOR INFORMATION REGARDING CONNECTING THE FUEL SUPPLY AND RETURN LINES PRIOR TO START UP, SEE THE FUEL TANK FIELD TESTING PROCEDURE SUPPLIED IN THE TANK LOOSE VENTS KIT, WHICH IS SHIPPED WITH THIS GENERATOR.
  - TRANSFORMER SWITCH/COMMUNICATION CONDUITS - COMMUNICATIONS AND 2-WIRE START MUST NOT BE RUN IN CONDUIT WITH AC WIRING.
  - CONTROL WIRES TO BE SHIELD AND TWISTED PAIR (40M MAX LENGTH).

| ITEMS ACCESSIBLE SERVICE SIDE OF UNIT | WEIGHT DATA WITH EMPTY BASETANK (SEE NOTE 5) |                             | WEIGHT DATA WITH FULL BASETANK (SEE NOTE 5) |                           |
|---------------------------------------|--|-----------------------------|---|---------------------------|
|                                       | GENERATOR AS SHOWN                           | APPROX:1088.6 KG [2400 LBS] | GENERATOR AS SHOWN                          | APPROX:1395 KG [3075 LBS] |
| BATTERY                               |  |                             |   |                           |
| CONTROL PANEL                         |  |                             |   |                           |
| COOLANT OVERFLOW TANK                 |  |                             |   |                           |
| COOLANT DRAIN                         |  |                             |   |                           |
| MOTOR OIL DIPSTICK                    |  |                             |   |                           |
| FUEL FILTER                           |  |                             |   |                           |
| OIL FILL                              |  |                             |   |                           |
| OIL FILTER                            |  |                             |   |                           |
| OIL DRAIN                             |  |                             |   |                           |
| MLCB                                  |  |                             |   |                           |
| FUEL FILL                             |  |                             |   |                           |
| AIR FILTER                            |  |                             |   |                           |



B

B



A

A

DRAWING CREATED FROM PRO/ENGINEER 3D FILE. ECO MODIFICATION TO BE APPLIED TO SOLID MODEL ONLY.

DIMENSION: mm (inch)

# INSTALLATION DRAWING

GENERAC POWER SYSTEMS OWNS THE COPYRIGHT OF THIS DRAWING WHICH IS SUPPLIED IN CONFIDENCE AND MUST NOT BE USED FOR ANY PURPOSE OTHER THAN FOR WHICH IT IS SUPPLIED WITHOUT THE EXPRESS WRITTEN CONSENT OF GENERAC POWER SYSTEMS. © GENERAC POWER SYSTEMS 2013.

ELECTRONICALLY APPROVED INSIDE WINDCHILL



|  |         |        |             |              |
|--|---------|--------|-------------|--------------|
| TITLE  |         |        |             |              |
| STUB-UP VIEW<br>INSTALL, D2.5L 20 KW AC, TELECOM |         |        |             |              |
| ISSUE DATE:                                      |         |        |             |              |
| SIZE   | CAGE NO | DWG NO | 10000013144 | REV          |
| B  | N/A     |        |             | 1            |
| SCALE  | 0.032   | WT-KG  |             | SHEET 1 of 2 |

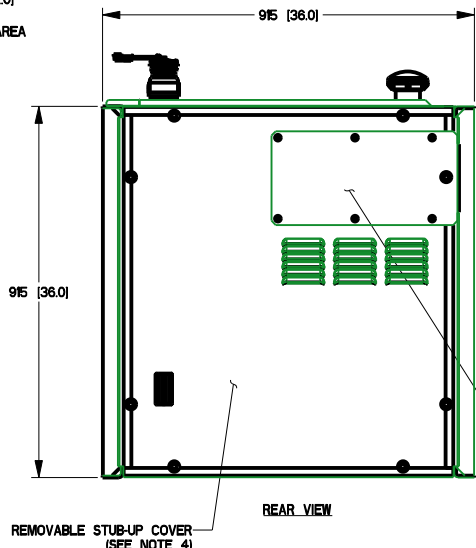
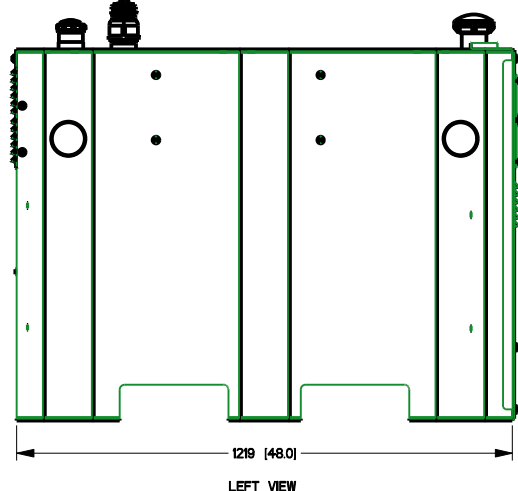
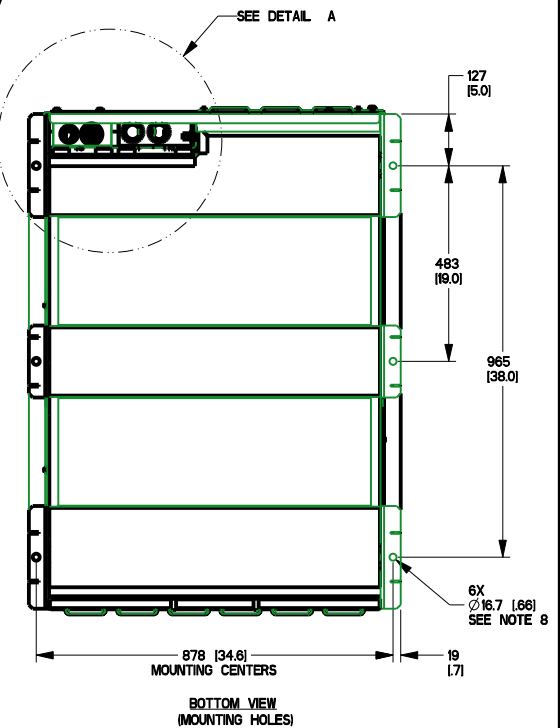
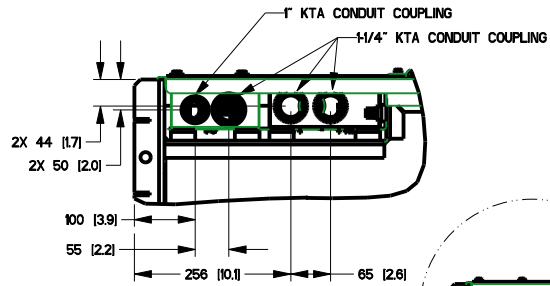
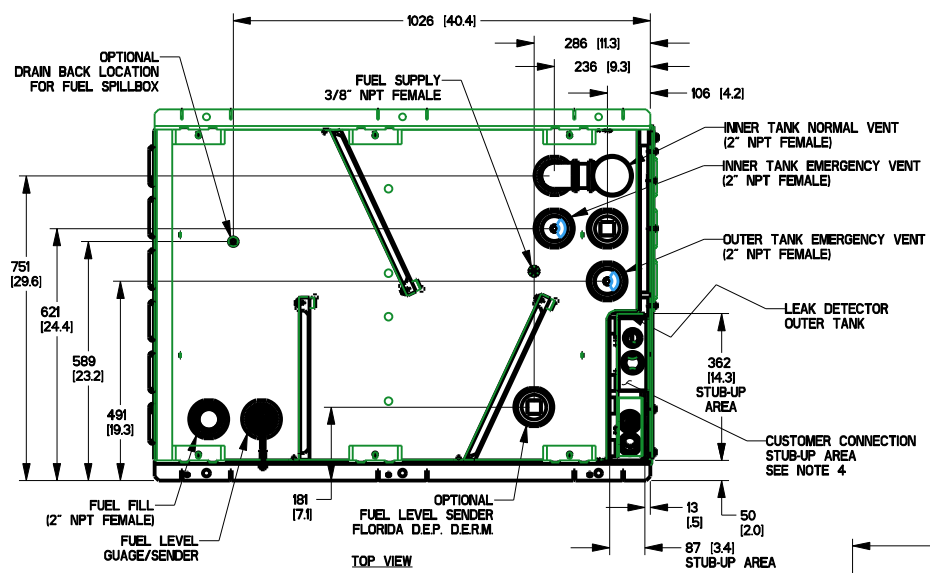
4

3

2

1

| FUEL TANK  |            |
|--|------------|
| TOTAL CAPACITY   | 363.4 [97] |
| USABLE CAPACITY  | 348.3 [92] |
| CAPACITY: LITER [GALLON]<br>DIMENSION: mm [inch]<br>THIS TANK IS LISTED TO UL142 |            |



REMOVE VENT ACCESS PANEL TO ALLOW TANK VENTS TO TERMINATE OUTSIDE OF THE GENERATOR ENCLOSURE (IF LOCAL CODE APPLIES, OPTIONAL KIT AVAILABLE)

DRAWING CREATED FROM PRO/ENGINEER 3D FILE. ECO MODIFICATION TO BE APPLIED TO SOLID MODEL ONLY.

# INSTALLATION DRAWING

GENERAC POWER SYSTEMS OWNS THE COPYRIGHT OF THIS DRAWING WHICH IS SUPPLIED IN CONFIDENCE AND MUST NOT BE USED FOR ANY PURPOSE OTHER THAN FOR WHICH IT IS SUPPLIED WITHOUT THE EXPRESS WRITTEN CONSENT OF GENERAC POWER SYSTEMS. © GENERAC POWER SYSTEMS 2013.

ELECTRONICALLY APPROVED INSIDE WINDCHILL

|   |                |                              |                 |  |
|---|----------------|------------------------------|-----------------|--|
| <b>GENERAC</b>  |                |                              |                 |  |
| TITLE<br>STUB-UP VIEW<br>INSTALL, D2.5L 20 KW AC, TELECOM |                |                              |                 |  |
| ISSUE DATE:   |                |                              |                 |  |
| SIZE<br><b>B</b>  | CAGE NO<br>N/A | DWG NO<br><b>10000013144</b> | REV<br><b>1</b> |  |
| SCALE<br>0.083  | WT-KG          | SHEET 2 of 2                 |                 |  |