

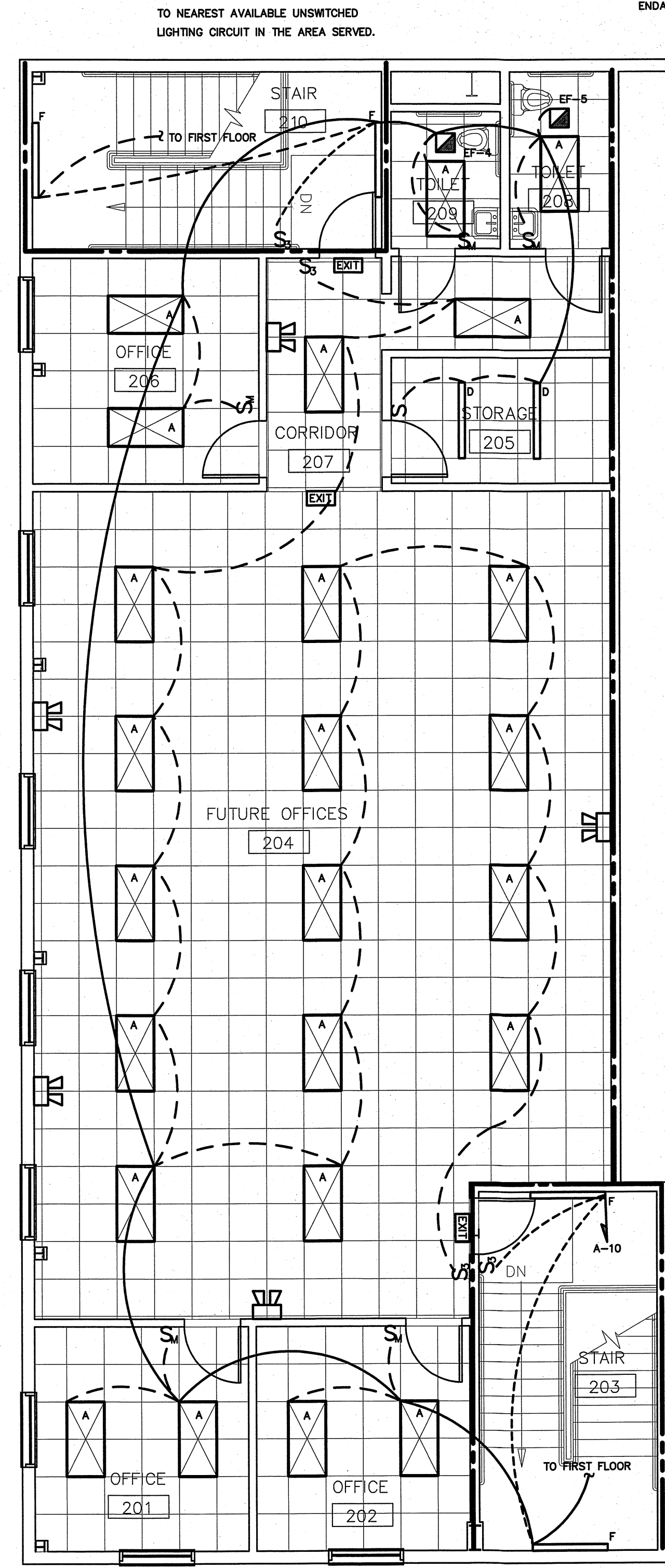
LIGHTING SCHEDULE *						
MARK	MANUFACTURER	CATALOG NO.	VOLT.	LAMPS NO. TYPE W	BALLAST TYPE	REMARKS
A	COLUMBIA	LCAT24-35LWG-EDU	277	LED	-	2X4 LAY-IN LED FIXTURE
B	COLUMBIA	LCAT22-35MWG-EDU	277	LED	-	2X2 LAY-IN LED FIXTURE
C	JUNO	IC22LED-04-14LM-35K	277	LED	-	6" LED RECESSED CAN FIXTURE
D	COLUMBIA	LCL4-35ML-EU	277	LED	-	4" LED STRIP FIXTURE
E	COLUMBIA	LLHV4-35LW-WST-EU	277	LED	-	2X4 HIGHBAY LIGHTS
EE	COLUMBIA	LLHV4-35LW-WST-EU-ELL14	277	LED	-	2X4 HIGHBAY LIGHTS W/ EMERGENCY BATTERY PACK, 1400 LUMENS
H	COLED	COLED4W-20W-500-930-K	277	LED	-	4" EXTERIOR SCENCE
U	ULTRABRIGHT	UB-AT1-30K97C	277	LED	-	LED LINEAR STRIP LIGHTING (UNDERCOUNTER)
F	COLUMBIA	MPS4-35ML-CN-EU-NXS	277	LED	-	FLUORESCENT WALL MOUNT STAIRWAY FIXTURE, BI-LEVEL W/ EMERG BALLAST, MOUNT AT 70" AFF
W	HUBBELL	SG1-40-3K7-FT-277-BLT	277	LED	-	EXTERIOR WALL PACK
G	COMPASS	CUSO	277	LED	-	EXTERIOR NORMAL/EMERGENCY LIGHT FIXTURE- COLOR BY ARCH
EXIT	COMPASS	CELR	277	LED	-	EXIT LIGHT, EMERGENCY BATTERY
EXIT	COMPASS	CU2	277	LED	-	EMERGENCY LIGHT

* OR APPROVED EQUAL, PROVIDE CUT SHEETS FOR OWNER APPROVAL PRIOR TO ORDERING FIXTURES. CATALOG NUMBERS ARE FOR REFERENCE ONLY, ACTUAL NUMBERS MAY VARY. THE EMERGENCY LIGHTS AND EXIT SIGNS MUST HAVE INTEGRAL BATTERIES, CHARGERS AND TEST SWITCHES.

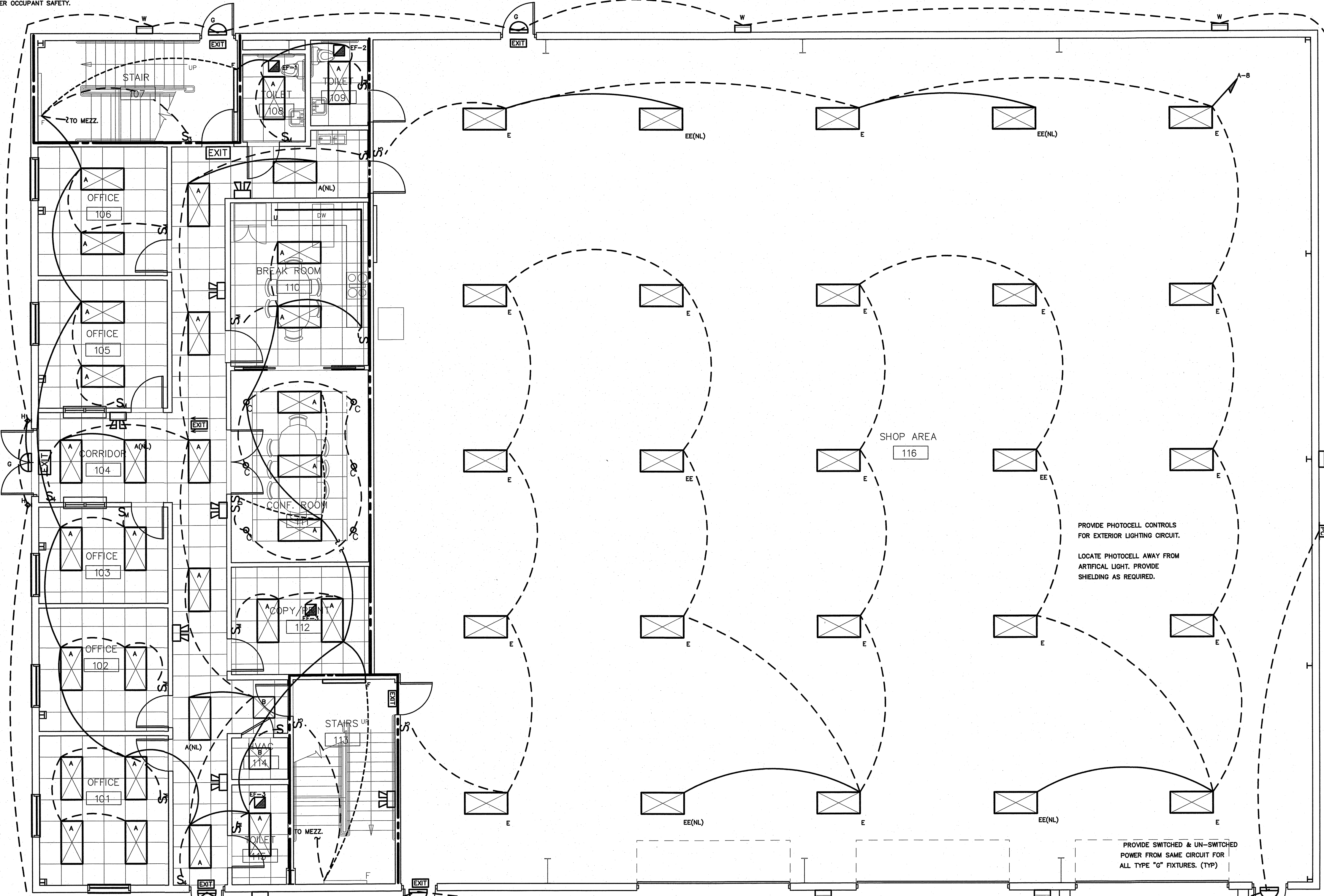
NOTE:
PROVIDE LABELING ON EACH SWITCH NOTING CIRCUIT SERVED.

TIE ALL EXIT AND EMERGENCY LIGHTS TO NEAREST AVAILABLE UNSWITCHED LIGHTING CIRCUIT IN THE AREA SERVED.

AUTOMATIC LIGHTING SHUTOFF IS NOT SHOWN IN THE EGRESS PATH LIGHTING AS ALLOWED PER 408.2.1-3 EXCEPTION #3, WHERE AUTOMATIC SHUTOFF WOULD ENDANGER OCCUPANT SAFETY.



2 MEZZANINE LIGHTING PLAN
SCALE: 3/16" = 1'-0"



1 1ST FLOOR LIGHTING PLAN
SCALE: 3/16" = 1'-0"

PROVIDE PHOTOCELL CONTROLS FOR EXTERIOR LIGHTING CIRCUIT.
LOCATE PHOTOCELL AWAY FROM ARTIFICIAL LIGHT. PROVIDE SHIELDING AS REQUIRED.

PROVIDE SWITCHED & UN-SWITCHED POWER FROM SAME CIRCUIT FOR ALL TYPE "O" FIXTURES. (TYP)

PROVIDE PHOTOCELL CONTROLS FOR EXTERIOR LIGHTING CIRCUIT.
LOCATE PHOTOCELL AWAY FROM ARTIFICIAL LIGHT. PROVIDE SHIELDING AS REQUIRED.

PROJECT TITLE
POWERMASTER ELECTRIC
311 JARCO DR
FUQUAY VARINA, NC 27526

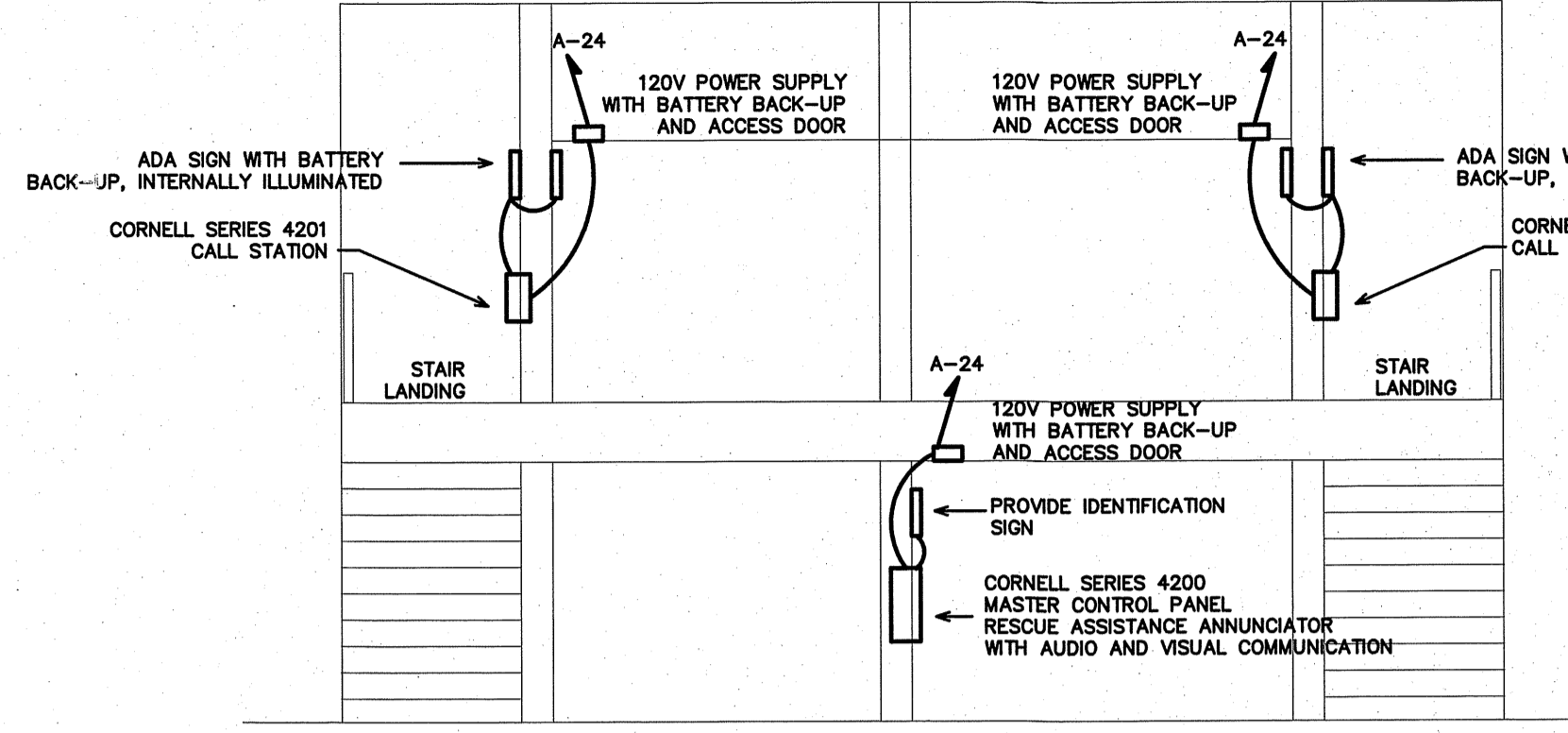
PROJECT NO.
2019
DRAWING TITLE
LIGHTING PLAN



PLOT DATE 8/11/21

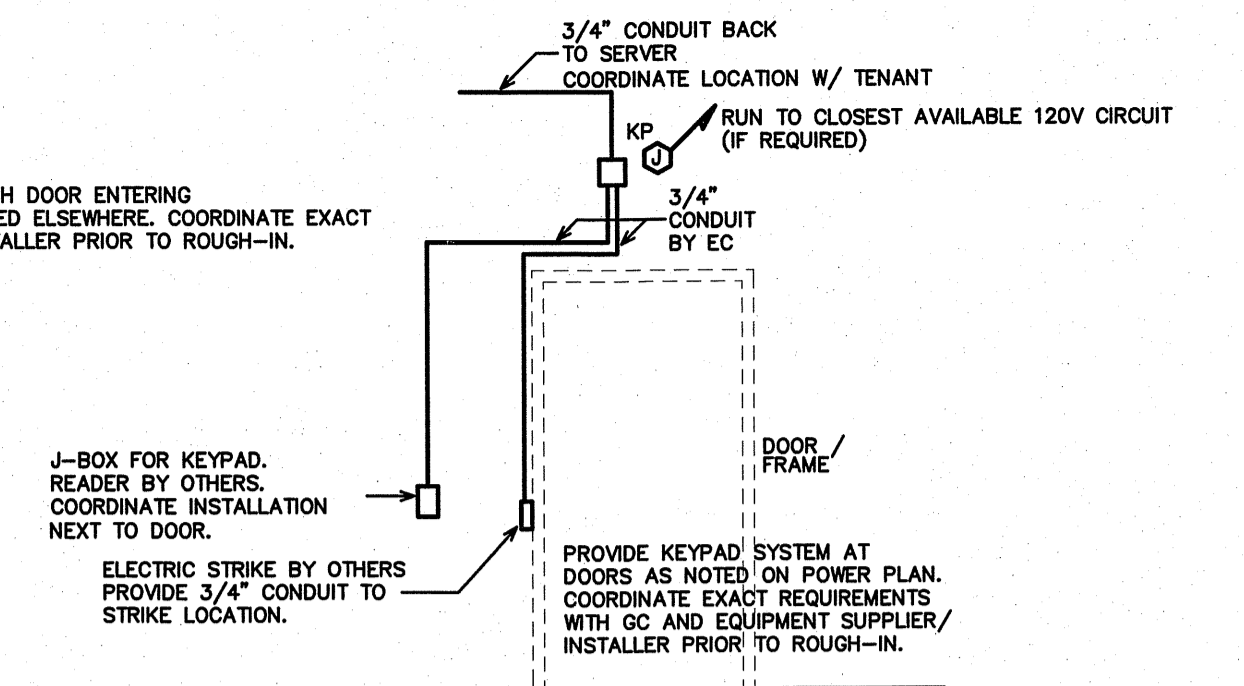
This original sheet is 24" x 36"; other dimensions indicate it has been altered.
All information on this sheet is the property of W. S. Architects, PA and may not be duplicated in whole or in part without written authorization from W. S. Architects, PA. 2021

NOTE:
 PROVIDE ALL WORK FOR A COMPLETE OPERATING AREA SYSTEM MEETING ALL LOCAL CODES AND ORDINANCES. ALL WORK SHALL MEET NFPA 72 AND THE NCSBC. PROVIDE ALL POWER AND CONTROL WIRING. ALL CONDUIT AND WIRING MUST BE RUN CONCEALED IF POSSIBLE. COORDINATE ALL WORK WITH THE A.H.J. PRIOR TO THE START OF WORK.



NOTE: COORDINATE ACTUAL LOCATION WITH LOCAL INSPECTIONS DEPARTMENT
4 ARA DETAIL
 SCALE: NTS

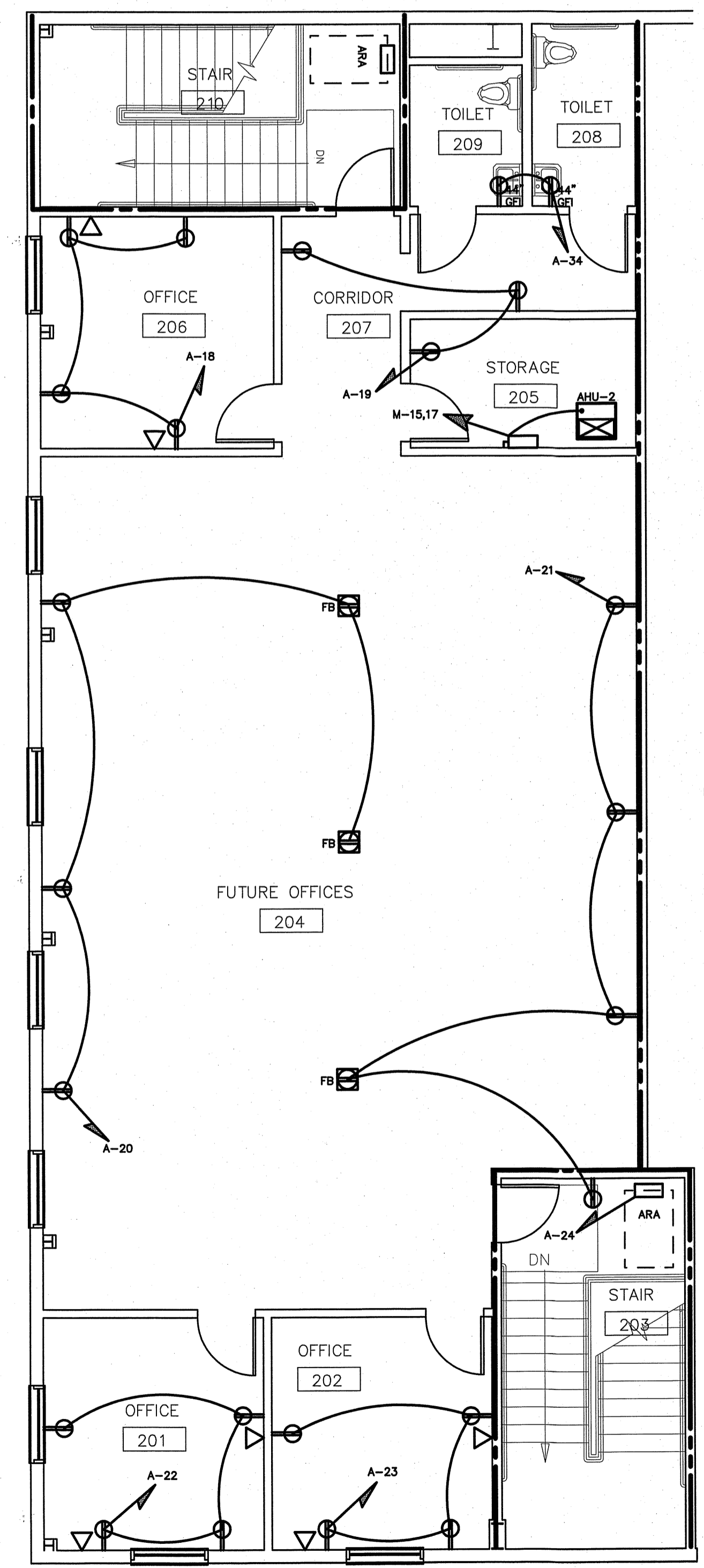
PROVIDE KEYPAD SYSTEM AT EACH DOOR ENTERING THE TENANT SPACE AND AS NOTED ELSEWHERE. COORDINATE EXACT SYSTEM REQUIREMENTS WITH INSTALLER PRIOR TO ROUGH-IN.



NOTE:
 THE SHOP AREA IS CLASSIFIED AS A MINOR REPAIR GARAGE PER 2017 NEC 511.2. NATURAL GAS OR HYDROGEN FUELED VEHICLES WILL NOT BE REPAIRED IN THIS FACILITY. THE AREA 18" ABOVE THE FLOOR IS CLASSIFIED AS A CLASS 1, DIVISION 2 AREA. ALL ELECTRICAL OR MECHANICAL EQUIPMENT SHALL BE LOCATED OUTSIDE OF THIS AREA. THE OWNER SHALL PROVIDE STANDS FOR ALL EQUIPMENT, WITH OPEN MOTORS, ETC. TO LOCATE HIGHER THAN 18" A.F.F.

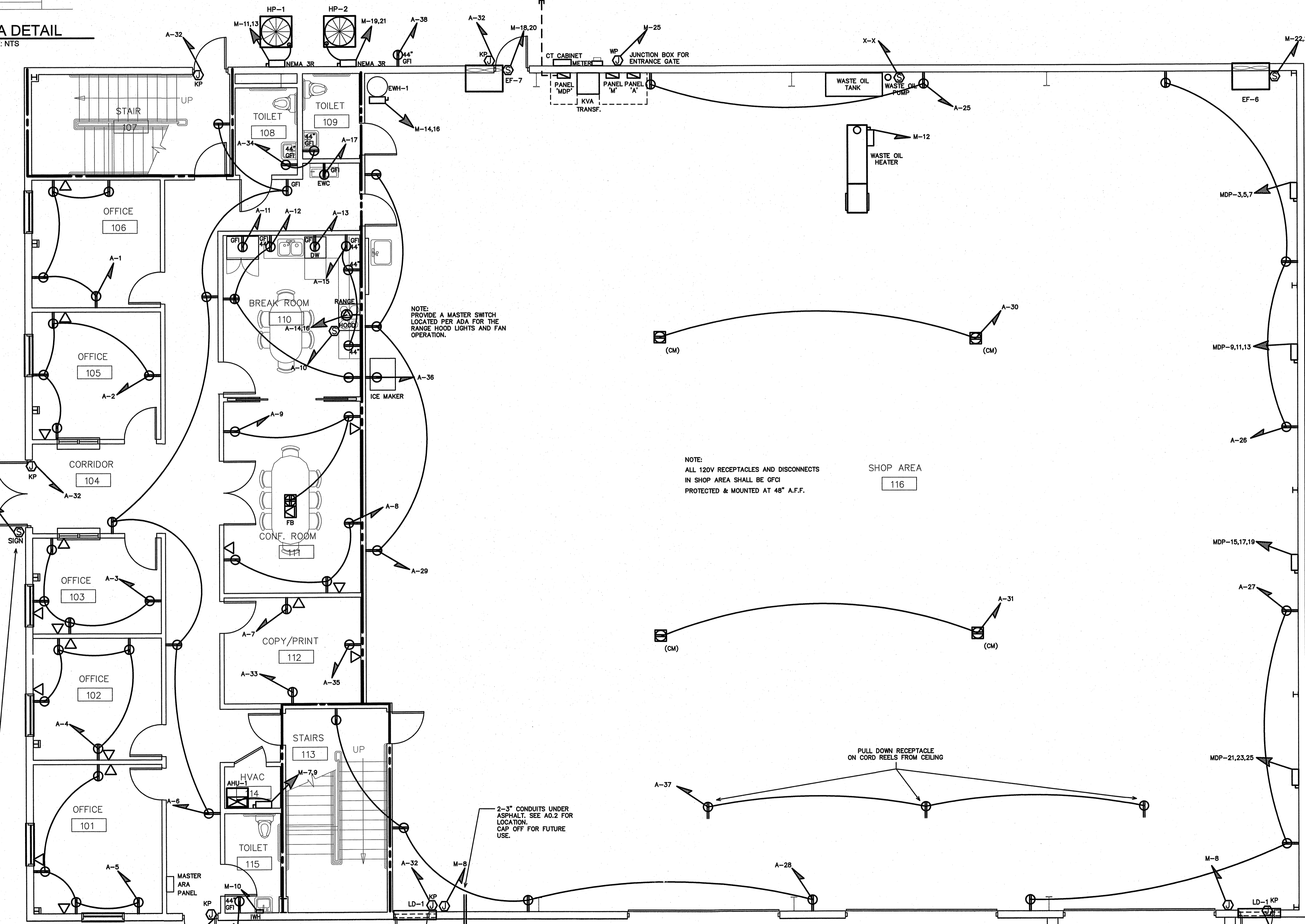
3 KEYPAD SYSTEM
 SCALE: NTS

NOTE:
 PROVIDE LABELING ON EACH RECEPTACLE NOTING CIRCUIT SERVED.



2 MEZZANINE POWER PLAN
 SCALE: 3/16" = 1'-0"

PROVIDE TIME CLOCK, JUNCTION BOX AND SWITCH FOR SIGN CIRCUIT. SWITCH SHALL BE LOCATED WITHIN SIGHT OF SIGN OR BE CAPABLE OF BEING LOCKED IN THE OPEN POSITION PER NEC 600.6. COORDINATE LOCATION WITH TENANT.

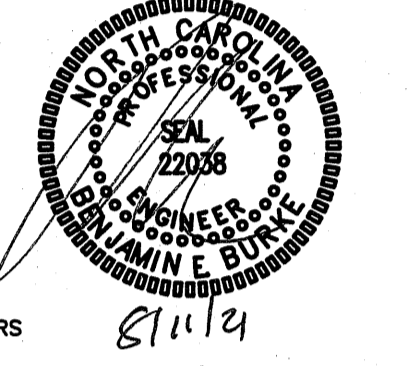


1 1ST FLOOR POWER PLAN
 SCALE: 3/16" = 1'-0"



W. S. ARCHITECTS, PA
 3305-109 Durham Drive
 Raleigh, North Carolina 27603
 919.779.9797
 www.wsarchitectspa.com

ENGINEER
BURKE DESIGN GROUP, P.B.
 CONSULTING ENGINEERS
 3305-109 Durham Drive
 Raleigh, North Carolina 27603
 919.771.1916 fax: 919.779.0826
 email: benburke@nc.rr.com
 Corp. License # C-2652



PROJECT TITLE
POWERMASTER ELECTRIC
 311 JARCO DR
 FUQUAY VARINA, NC 27526

PROJECT NO.
2019
 DRAWING TITLE
POWER PLAN



PLOT DATE 8/11/21

This original sheet is 24" x 36"; other dimensions indicate it has been altered.
 All information on this sheet is the property of W. S. Architects, PA and may not be duplicated in whole or in part without written authorization from W. S. Architects, PA. 2021

