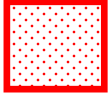
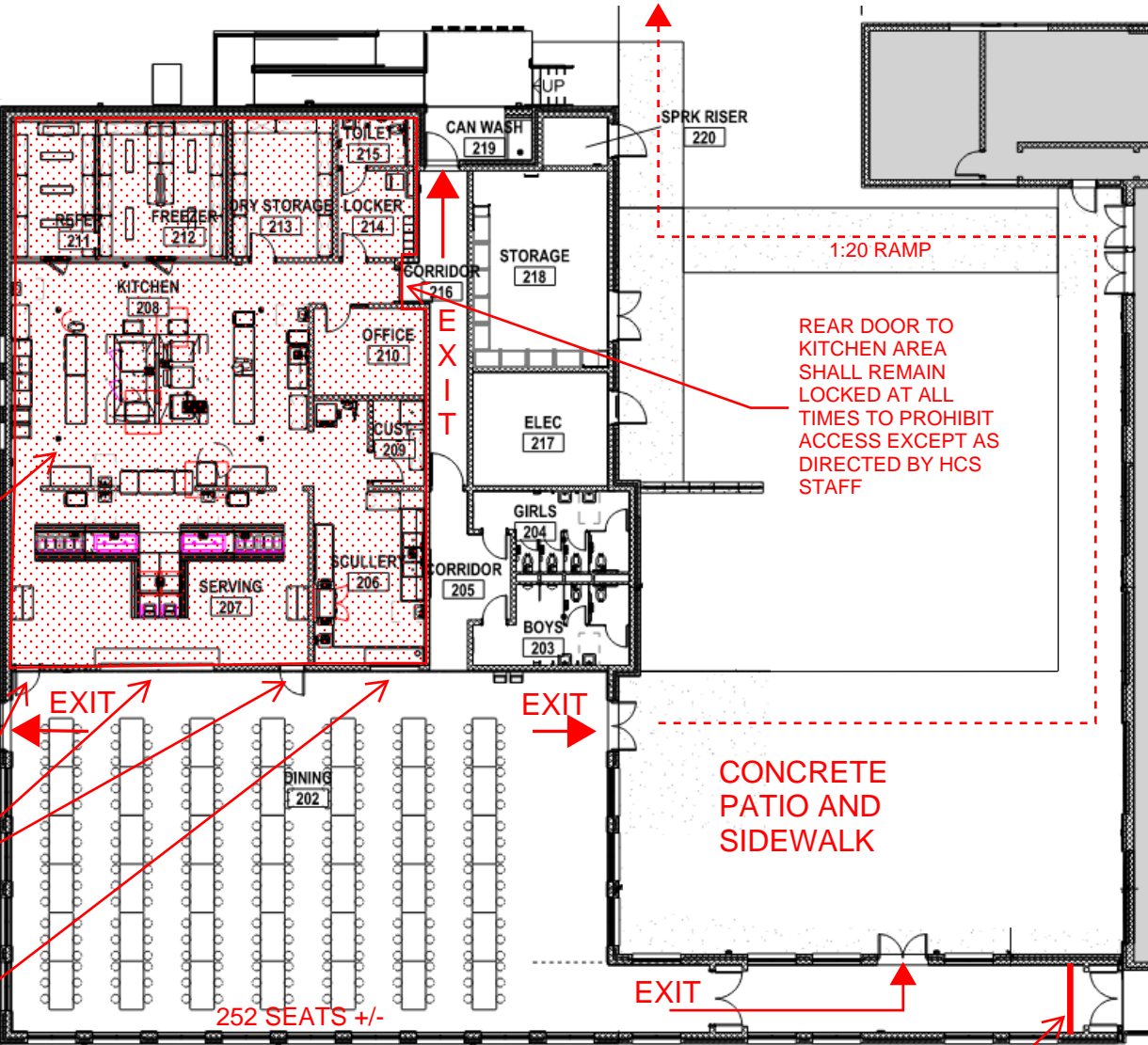


OWNER WILL NOT OCCUPY THE KITCHEN AREA AND ALL ADJACENT SPACES AS DENOTED BY THE HATCHED AREA



TWO ACCESS DOORS AND OVERHEAD DOOR TO SERVING AREA TO REMAIN CLOSED AND LOCKED AT ALL TIMES

OVERHEAD ACCESS DOOR TO SCULLERY TO REMAIN CLOSED AND LOCKED AT ALL TIMES



REAR DOOR TO KITCHEN AREA SHALL REMAIN LOCKED AT ALL TIMES TO PROHIBIT ACCESS EXCEPT AS DIRECTED BY HCS STAFF

CONCRETE PATIO AND SIDEWALK

CONNECTION CORRIDOR TEMPORARY BARRIER CURRENTLY IN PLACE TO PROHIBIT ACCESS TO GYMNASIUM LOBBY AREA

**JOHNSONVILLE ES P1 OCCUPANCY DIAGRAM:**  
OCCUPANCY: ASSEMBLY SPACE  
POSTED MAXIMUM OCCUPANCY FOR THE DINING AREA: 470 OCCUPANTS



ARCHITECTS  
Capital Bank Plaza  
333 Fayetteville Street, Suite 225  
Raleigh NC 27601  
8.23.2023