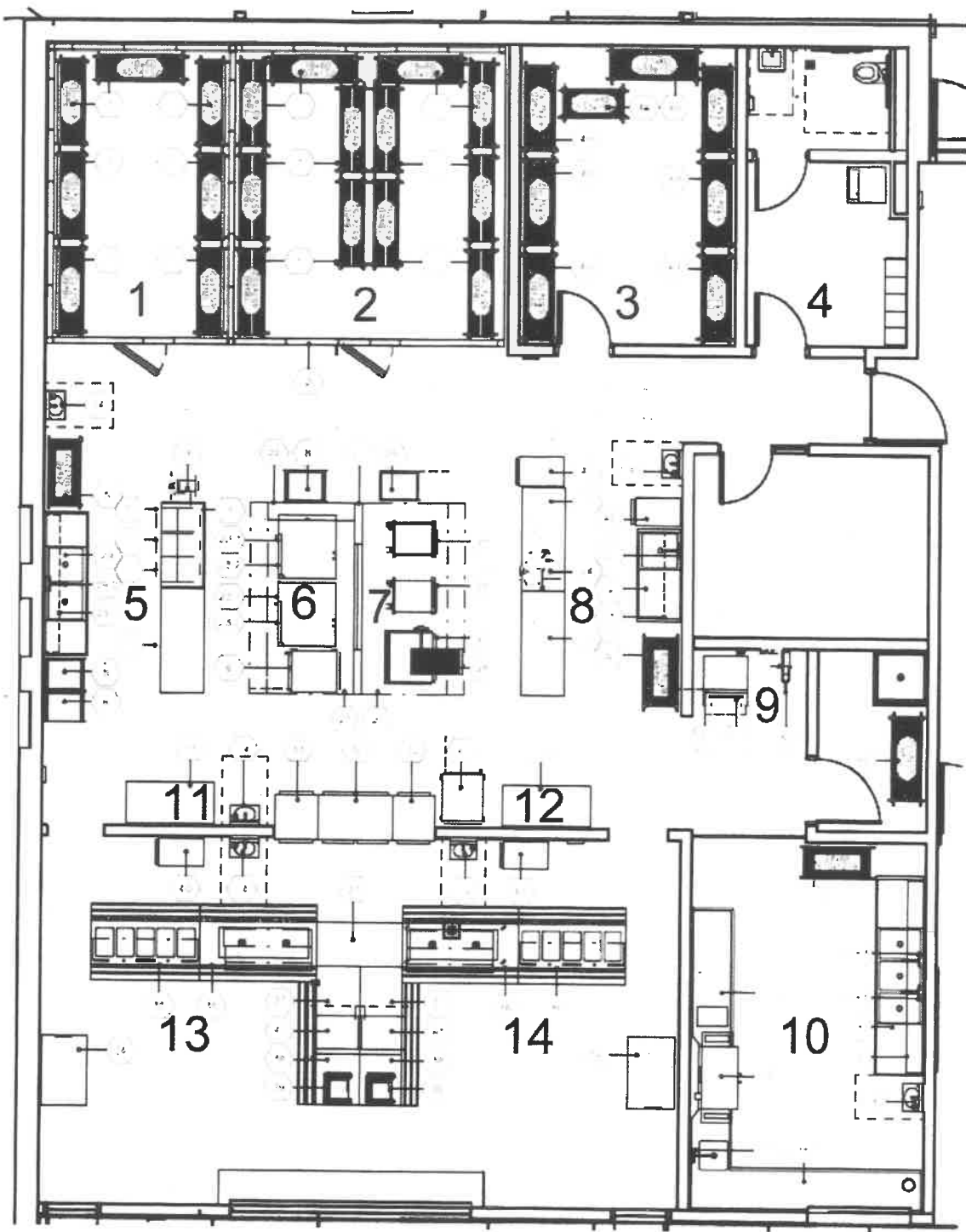


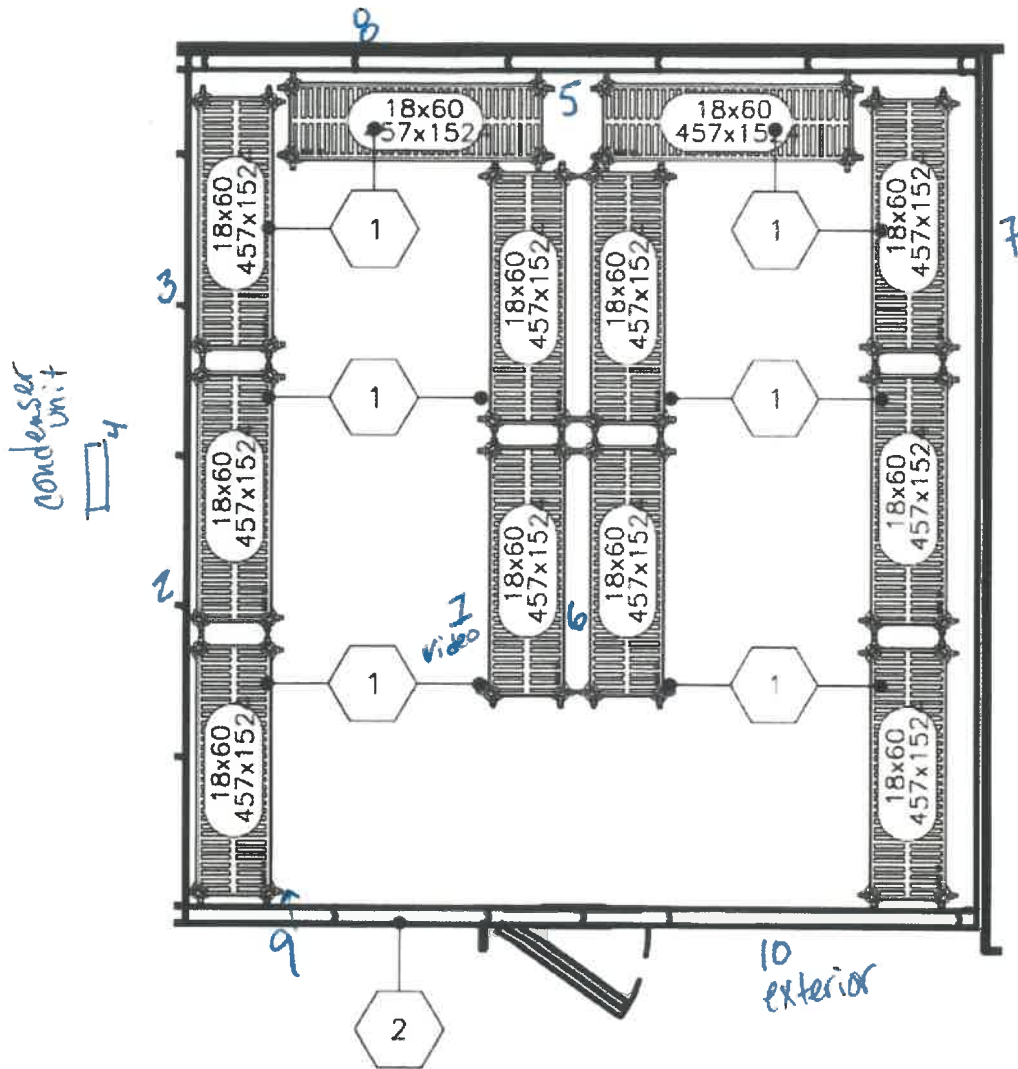
7/31/23

### JOHNSONVILLE ELEMENTARY KITCHEN

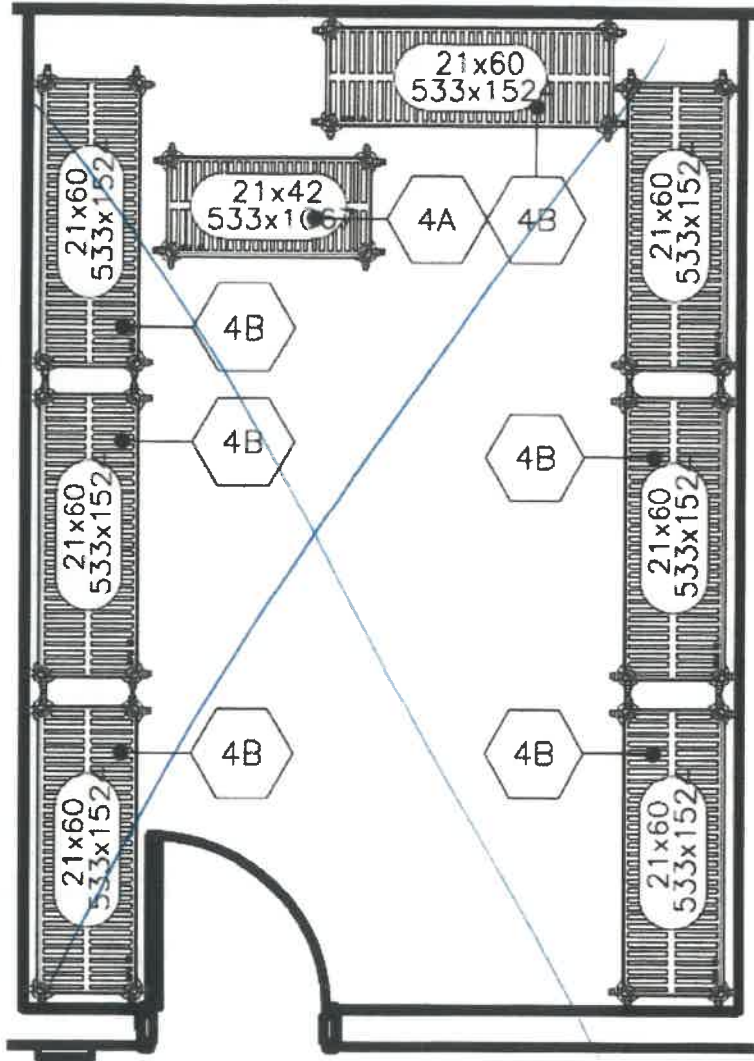




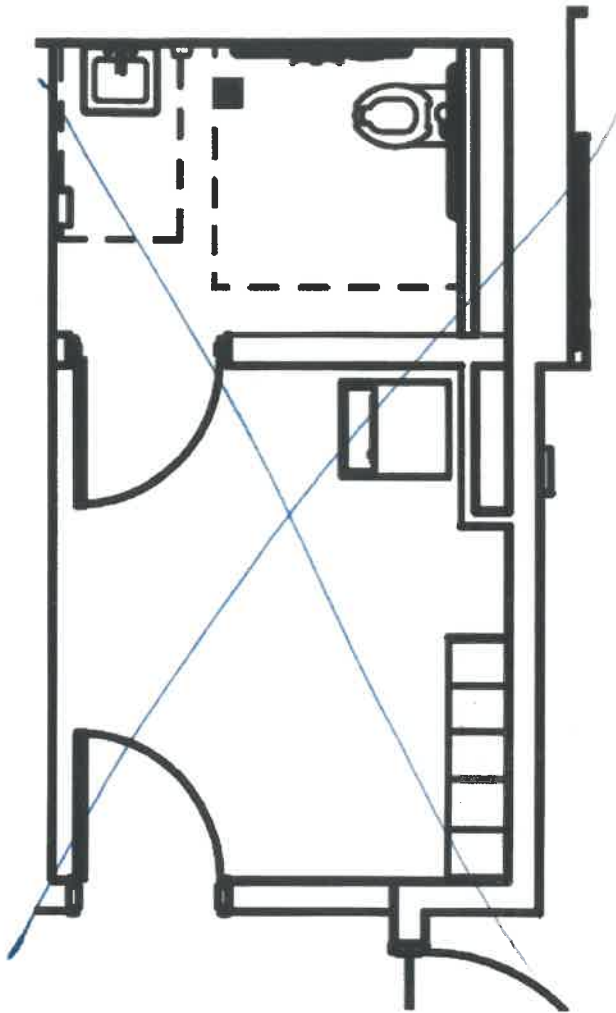
**SECTION 2**



**SECTION 3**

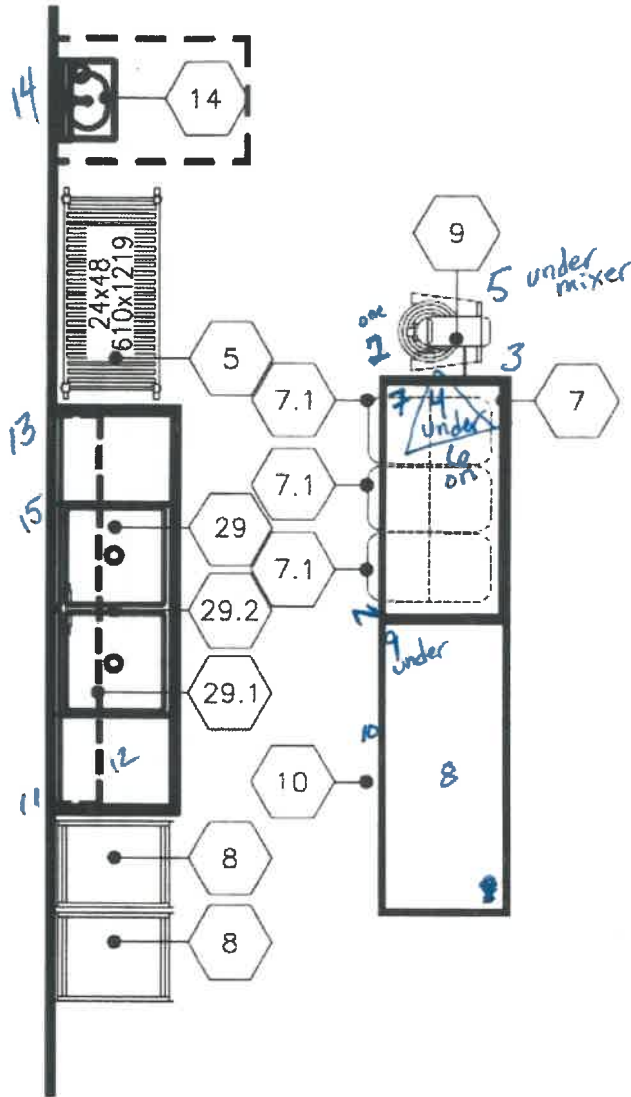


SECTION 4



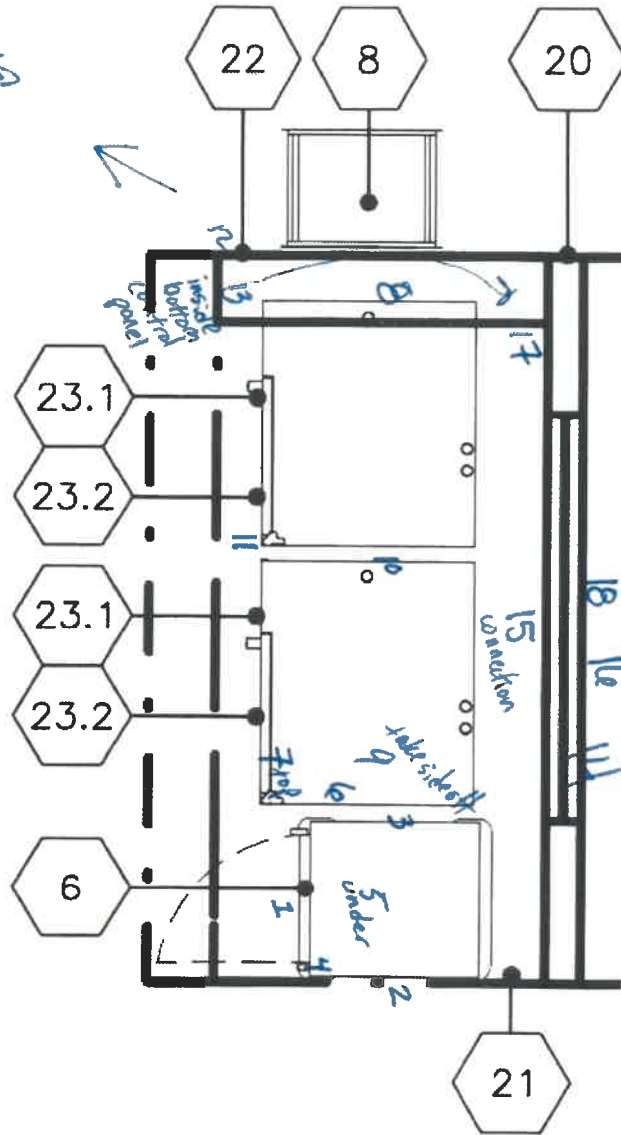
**SECTION 5**

#7 bakers table  
1, 2, 3, 4, 6, 7



**SECTION 6**

*inside edge  
where access  
panel rests  
on hood*



*#12 on hood  
side panel  
detached*

*hood header  
filter  
hood*

*hood  
hood  
hood*

*hood  
hood*

*hood*

*hood*

*hood*

*hood*

*hood*

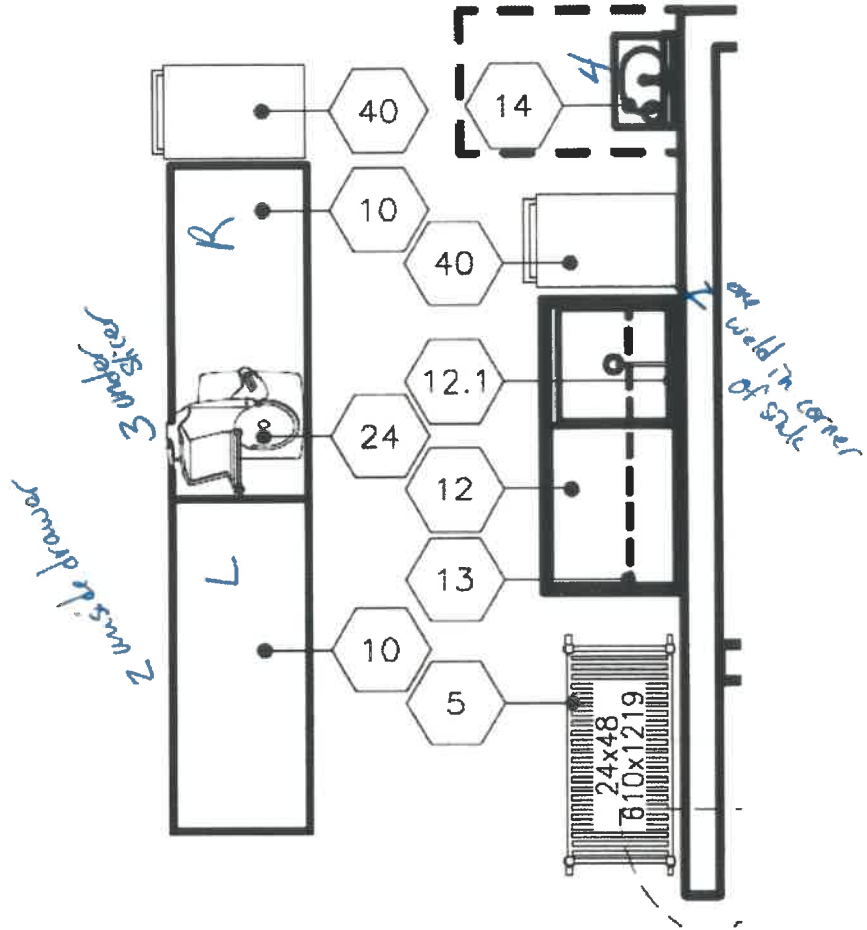
*hood*



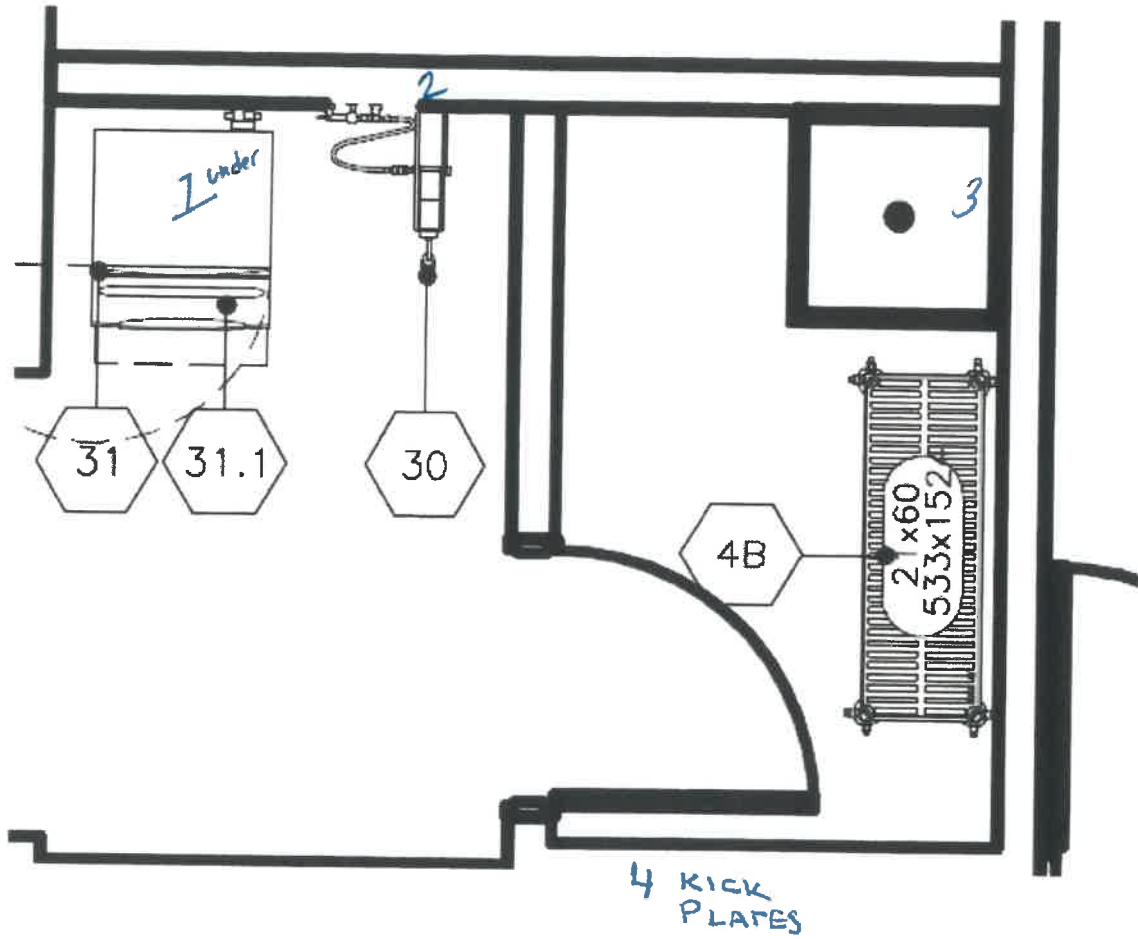


**SECTION 8**

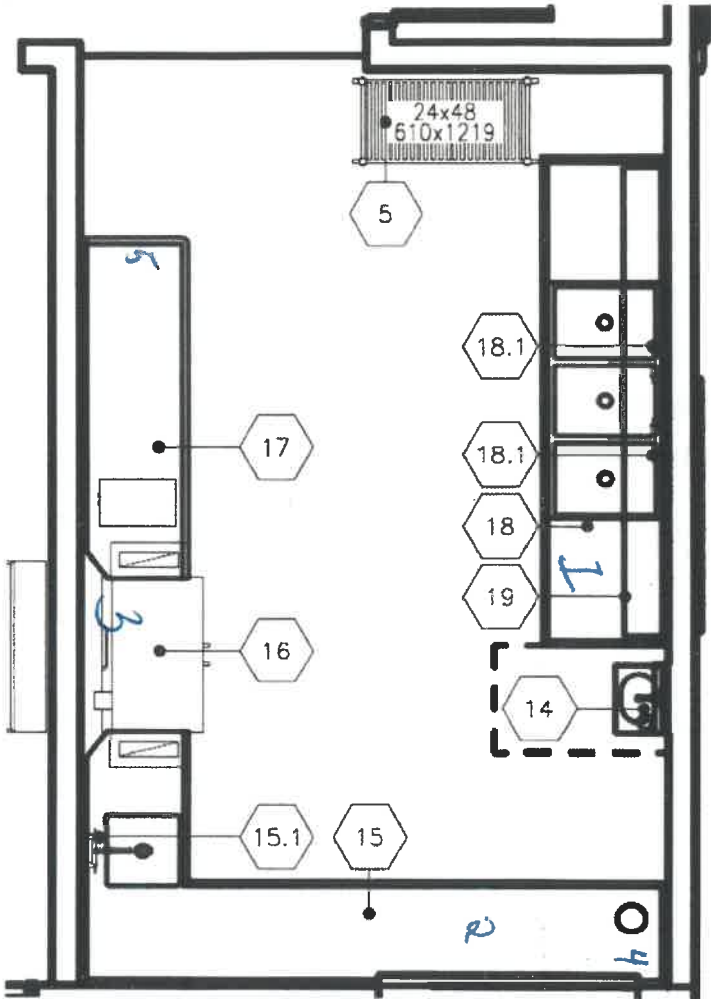
*HOOD* ↗



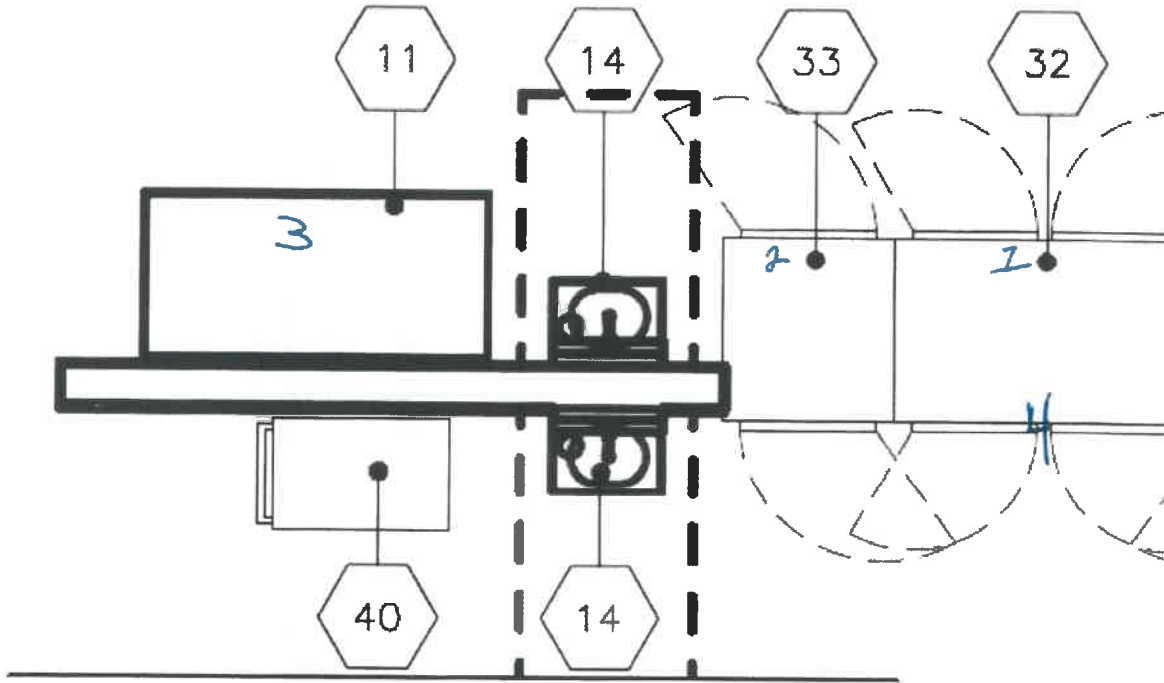
SECTION 9



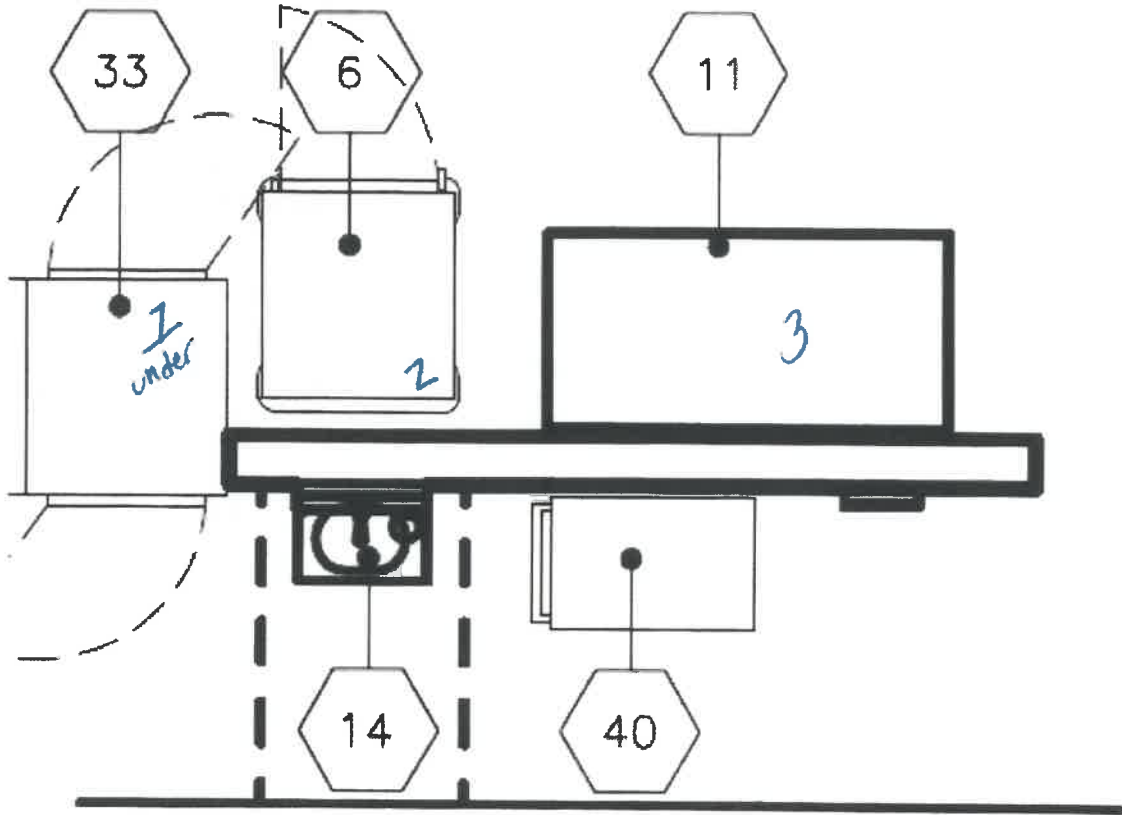
**SECTION 10**



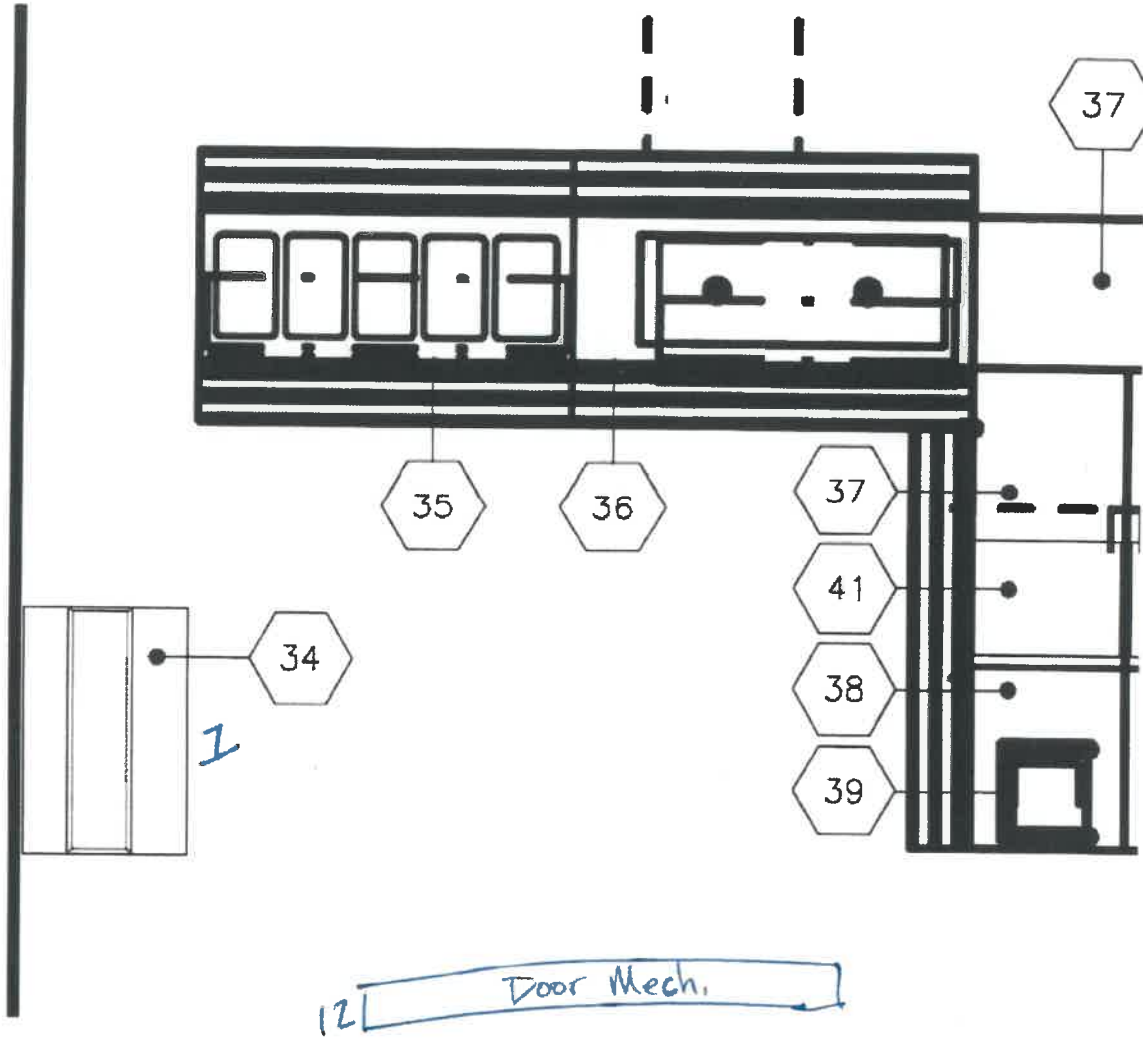
SECTION 11



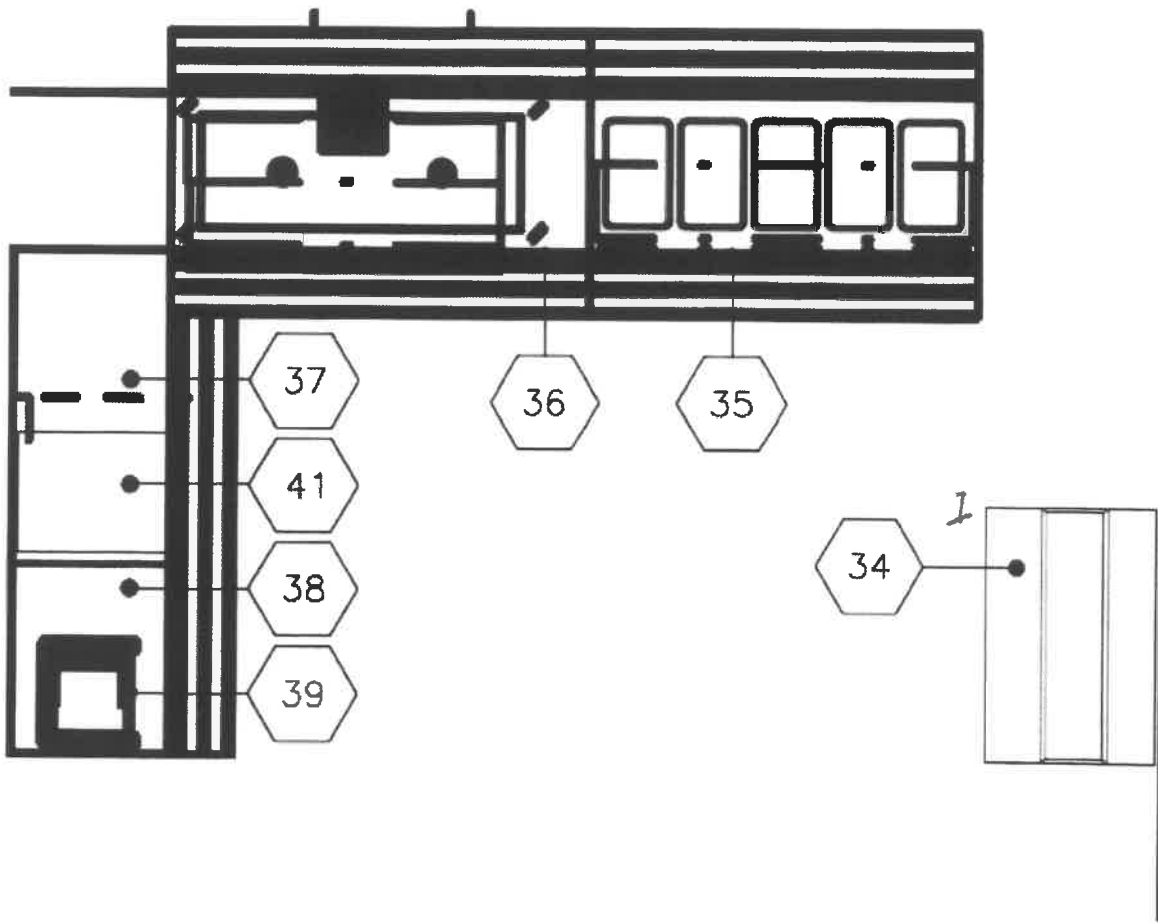
SECTION 12



**SECTION 13**



**SECTION 14**



Item #	Description
01	cold storage shelving unit
02	cold storage assembly
3	N/A
04A	shelving unit
04B	shelving unit
05	pot & pan shelving rack
06	proofer/holding cabinet
07	baker's worktable
07.1	ingredient bins
08	bun pan rack
09	planetary mixer
10	worktable
11	worktable
12	one (1) compartment sink
12.1	faucet
13	wall mounted shelves
14	hand sink
15	soiled dishtable
15.1	pre-rinse faucet
16	dishwasher conveyer
17	clean dishtable
18	three (3) compartment sink
18.1	faucet
19	overshelf
20	utility distribution system

Item #	Description
21	exhaust hood
22	fire suppression system
23.1	combi oven, electric
23.2	combi oven, electric
24	meat slicer
25	mobile enclosed cabinet
26	steamer, convection
27	tilt skillet
28	floor through
29	two (2) compartment sink
29.1	wall mounted shelves
29.2	faucet
30	hose reel
31	ice maker
31.1	ice bin
32	pass-thru refrigerator
33	pass-thru heated cabinet
34	milk cooler
35	hot food serving counter
36	cold food serving counter
37	serving counter, utility
38	cashier counter
39	P.O.S.
40	utility cart
41	countertop ice dispenser



Section	Item	Description	Qty	FCS	Placard(s)	Damage
<b>1</b>						
	01	cold storage shelving unit	6			<ul style="list-style-type: none"> <li>1 - GASKET IN JOINTS WITH SOME HARDEN</li> <li>2 - UNEVEN PANEL</li> <li>3 - CAULK CORNER</li> <li>4 - FURF MESH HARDEN + CAULK</li> <li>5 - RESIDUE ON WIC WALL</li> <li>* 6 - WIC WALLS HARDEN (OUT OF ORDER)</li> </ul>
<b>2</b>						
	02	cold storage assembly	1			<ul style="list-style-type: none"> <li>1 - WIF - FINE FLEXING</li> <li>2 - CAULK</li> <li>3 - UNEVEN WALL</li> <li>4 - CONTAINER NOT ASSEMBLED TIGHT / PAUSE</li> <li>5 - SUBSTANCE ON WIF PANEL</li> <li>6 - WIF CARRYS LIME CORROSION</li> <li>7 - PANEL SEPARATION</li> <li>8 - WATER ON BRICK WALL / CEILING SYMPTOM</li> <li>9 - UNEVEN TANGS LANDING</li> <li>10 - WIF HARDEN</li> </ul>
	01	cold storage shelving unit	6			
<b>3</b>						
	4A	shelving unit	1			N/A
	4B	shelving unit	6			
<b>4</b>						
	N/A					

5					
		N/A			
5		pot & pan shelving rack	1		
7		baker's worktable	1		1 - REMOVE FROM BOTTOM LID UNDERSIDE 2 - EXCEPT CORNER 3 - BOTTOM LEG JOINT 4 - GAP BAKER TABLE 5 - MIXER + MOUNT
7.1		N/A ingredient bins	3		
8		N/A bun pan rack	2		
9		planetary mixer	1		FIGURE B 5
14		hand sink	1		14 - UNDERSIDE HANGING BOUL
29		two (2) compartment sink	1		11 - CHECKED W/ID 12 - DRAINAGE NOT DRAINING 13 - BACKSPLASH VOID 15 -
29.1		N/A wall mounted shelves	1		
29.2		N/A faucet	1		
10		WORK TABLE			8 - HOLE IN WORK TABLE 9 - DRAINAGE + TRAVELER 11 - BOTTOM SHELF UNDER SIDE / EDGES

6					
6	proofer/holding cabinet	1			1 - FRONT CORNER LOWER DOOR 5 - UPSIDE 2 - SURFACE RT SIDE 3 - " LF SIDE 4 - <del>CASTERS</del>
8	<i>N/A</i> bun pan rack	1			
20	utility distribution system	1			15 - FACE PLATE BEAT OUT
21	exhaust hood	1			<del>12 - HOOD INTERIOR LOWER PANEL</del> 13 - SIDE SUNCTION HOOD/CONTROLS/ANSHL 16 - HOOD FILTER <del>14 -</del> 14 - HOOD GAP PANELS
22	fire suppression system	1			12 - HOOD ANSHL LOWER PANEL 17 - CONTROL SUNCTION HOOD/ HOOD SPLITS *19 - SUPPRESSED CHEMICAL HOOD SURFACES - MANUAL
23.1	combi oven, electric	2			6 - SIDE BUMPS 7 - DOOR HINGE TOP 8 - LEFT COMBINATION OVEN SIDE 4 - INTERIOR BETWEEN OVENS
23.2	combi oven, electric	2			10 - RIGHT COMP OVEN SEPARATION PANEL 11 - SIDE BOTTOM HINGE AREA - LEFT OVEN

7					
21	exhaust hood	1			5 - HOOD SEAM/GAP *8 - HOOD EXTERIOR SCRAPER *9 - <del>HOOD</del> ANSHL INTERIOR HOOD
25	<i>N/A</i> mobile enclosed cabinet	1			
26	steamer, convection	2			1 - BSA TOP + BOTTOM UNITS - RT SIDE / PIPES 2 - WET BACK / COMPONENTS 3 - EXHAUST DRAIN PIPES 4 - BOTTOM TOP + BOTTOM RACK LF SIDE

					6 - FAUCET ASSEMBLY + BRACKET 7 - BACK UNDERSIDE TILT SKILLET / BRACKETS (L+R) 2 INCH ANGLE / LID CORNER / SPINDLE MOTOR 10 - UNDERSIDE TILT SKILLET
27	tilt skillet		1		
	<del>N/A</del>				12 - FLOOR DRAW TILT SKILLET
28	floor through		1		
					11 - DUSTING
		WATER CHASE			
8					
	<del>N/A</del>				
5	pot & pan shelving rack		1		
					2 - DRAWER INSERTS, UNDERSIDE DRAWER SHELF, TOP PLATE, (LEFT DRAW)
10	work table		2		
					1 - CORNER INSERTS / SUPPORT / UNDERSIDE - DRAW
12	one (1) compartment sink		1		
	<del>N/A</del>				
12.1	faucet		1		
	<del>N/A</del>				
13	wall mounted shelves		1		
					4 - DRAWER COLLAR, STOPPER
14	hand sink		1		
					3 - TABLE UNDERSIDES, <del>DIFF</del> SURFACE HANDS SLICER, SLICER, TOPS + MOTORS SURFACES,
24	meat slicer		1		
	<del>N/A</del>				
40	utility cart		2		

9					
48	shelving unit	1			
30	hose reel	1			2 - HOSE REEL HOUSING
31	ice maker	1			
31.1	ice bin	1			1 - LEG, PIPE STAND OFF BRACKET, (LAPPING CONDENSATION PIPE)
	MOP HANGER				3 - SHELF FRONT + TOWEL UNDER SIDE 4 - DOOR KICK PLATE
10					
5	N/A pot & pan shelving rack	1			
14	N/A hand sink	1			
15	soiled dishtable	1			2 - BRUSH WHEELS, SCRUBBER, POUNDING CHAPER, HANDLES, 3 - DISH WHEELS
15.1	N/A pre-rinse faucet	1			
16	dishwasher, conveyer	1			3 - PINK ANCHOR LEGS 5 - <del>TOY HANGER CROCK SHELF BRUSH WHEELS</del>

PASS TUB

4 - COLLAR CAP / PASS TUB

					5 - TYP LIMITED SWITCH - HOLES NEED THREADING
17	clean dishtable	1			
18	three (3) compartment sink	1			1 - WELD, UNITSIDE, SUBJECTS, SUBJECT W/ST,
18.1	n/a faucet	2			
19	n/a overshelf	1			
<b>11</b>					
11	work table	1			3 - BOTTOM ANGLE L90 BRACKET CLIP
14	n/a hand sink	2			
32	pass-thru refrigerator	1			1 - EXPOSED RUST, PAINT CORNER, LOUVERS, 4 - IMPROVED LOCK MECHANISM
33	pass-thru heated cabinet	1			2 - BOTTOM SINK HOT CABINET
40	n/a utility cart	1			

12					
					2 - RETURN, PE 4207510E (01/2010)
	6	proofer/holding cabinet	1		
	11	work table	1		
		N/A			
	14	hand sink	1		
					1 - BOTTOM UNDERSIDE
	33	pass-thru heated cabinet	1		
		N/A			
	40	utility cart	1		

13					
	34	milk cooler	1		
		N/A			
	35	hot food serving counter	1		
		N/A			
	36	cold food serving counter	1		
		N/A			
	37	serving counter, utility	2		
		N/A			
	38	cashier counter	1		

		N/A			
39		P.O.S.	1		
		N/A			
41		counter top ice dispenser	1		
<b>14</b>					
					1 - RUST PICTURES
34		milk cooler	1		
		N/A			
35		hot food serving counter	1		
		N/A			
36		cold food serving counter	1		
		N/A			
37		serving counter, utility	1		
		N/A			
38		cashier counter	1		
		N/A			
39		P.O.S.	1		
		N/A			
41		counter top ice dispenser	1		
		RALPH BOOR			2 - RUST SPINDLE