

NOTES

- FIELD PIPE DROPS AS SHOWN
- SLEEVING, ELBOWS, TEES, AND NOZZLES SUPPLIED BY CAS.
- RELOCATE NOZZLES IF FLOW PATTERN IS BLOCKED BY SHELVING, SALAMANDERS, ETC.
- MAXIMUM 9 ELBOWS IN SUPPLY LINE.
- MINIMUM 72 INCHES OF AGENT LINE FROM TANK TO FIRST NOZZLE COVERING A RANGE, FRYER, OR WOK TO REFLECT GENERAL PIPING REQUIREMENTS.
- IF APPLICABLE, PRE-PIPED CHARBROILER DROPS ARE SHIPPED LOOSE.
- FACTORY PIPING EXTENDS A MAXIMUM OF 6' ABOVE THE TOP OF THE HOOD.

- APPLIANCE DIMENSIONS LISTED REPRESENT THE COOKING SURFACE SIZE, NOT THE OVERALL APPLIANCE SIZE.

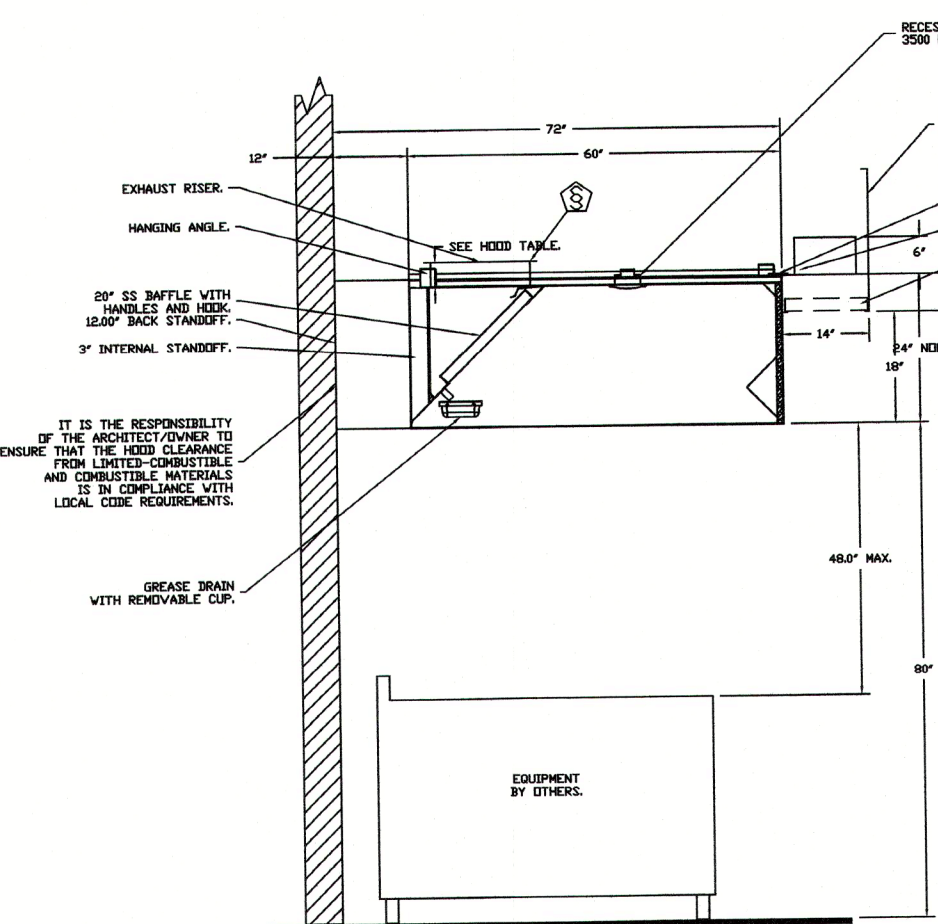
- THIS FIRE SYSTEM COMPLIES WITH UL 300 REQUIREMENTS.

JOB #: 4647267
 JOB NAME: JOHNSONVILLE ELEMENTARY SCHOOL-CAMERON NC.

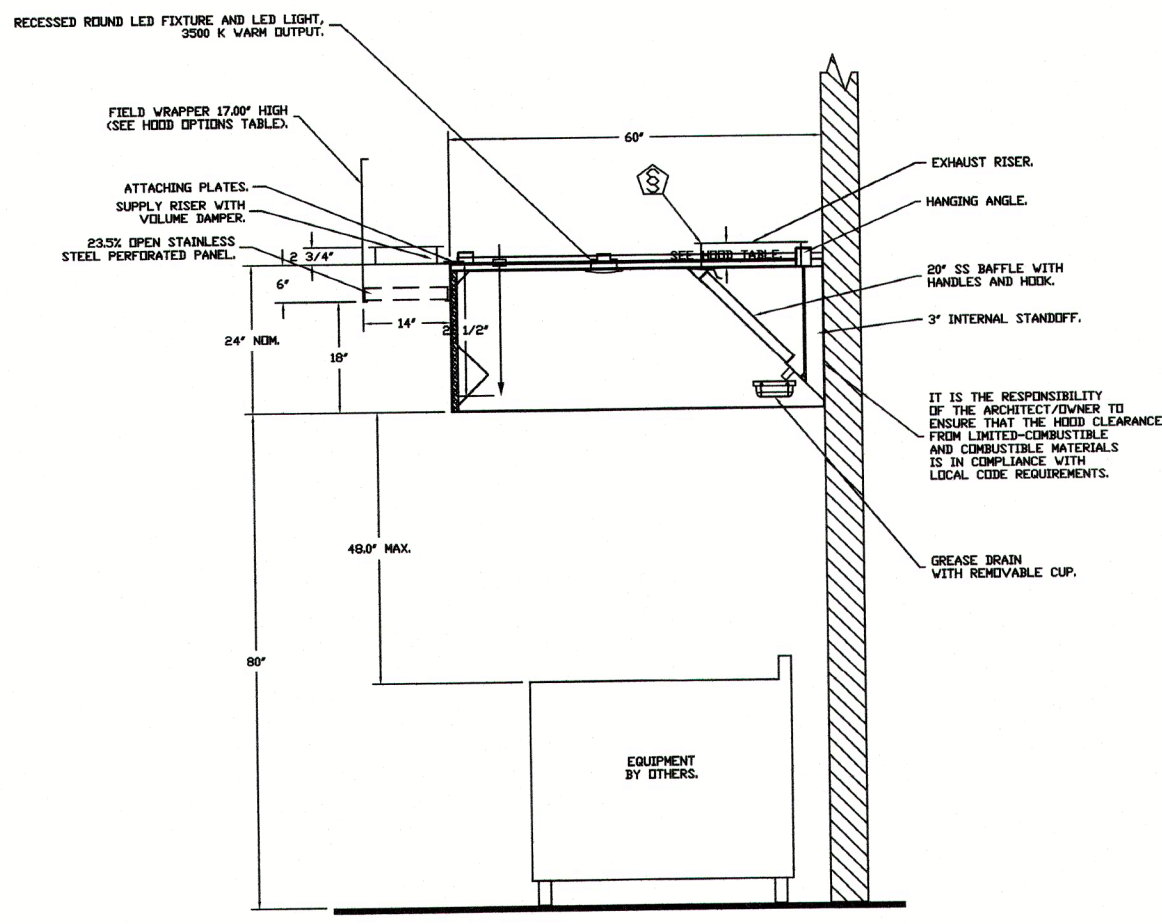
SYSTEM SIZE: ANSUL-3.0/3.0 TOTAL FP REQUIRED: 17.
 HOOD # 1 10' 0.00" LONG x 60" WIDE x 24" HIGH.
 RISER # 1 SIZE: 16" DIA.
 HOOD # 1 METAL BLOW-OFF CAPS INCLUDED.
 HOOD # 2 11' 0.00" LONG x 60" WIDE x 24" HIGH.
 RISER # 2 SIZE: 16" DIA.
 HOOD # 2 METAL BLOW-OFF CAPS INCLUDED.

- LEGEND - FIRE CABINET ANSUL SYSTEM**
- 1A 1.5 GALLON TANK.
 - 1B 3 GALLON TANK.
 - 2 DEM AUTDMAN RELEASE.
 - 3 DEM REGULATED RELEASE.
 - 4 DEM REGULATED ACTUATOR.
 - 5 ANSULEX LIQUID AGENT (3 GAL.).
 - 6 ANSULEX LIQUID AGENT (1.5 GAL.).
 - 7 CARTRIDGE (101-20).
 - 8 CARTRIDGE (101-10).
 - 9 CARTRIDGE (101-30).
 - 9A CARTRIDGE (L T-A-101-30).
 - 9B DOUBLE TANK CARTRIDGE.
 - 10 TEST LINK.
 - 11 DOUBLE MICROSWITCH.
 - 12 HOSE ASSEMBLY.
 - 1100 DUCT NOZZLE (430913).
 - 2W DUCT NOZZLE (419337).
 - 1W NOZZLE ASSEMBLY (419336).
 - 1F NOZZLE ASSEMBLY (419332).
 - 1N NOZZLE ASSEMBLY (419335).
 - 1/2N NOZZLE ASSEMBLY (419334).
 - 3N NOZZLE ASSEMBLY (419338).
 - 245 NOZZLE ASSEMBLY (419340).
 - 230 NOZZLE ASSEMBLY (419339).
 - 2120 NOZZLE ASSEMBLY (419343).
 - 290 NOZZLE ASSEMBLY (419342).
 - 260 NOZZLE ASSEMBLY (419341).
 - 28 DETECTOR BRACKET.
 - 29 LOW TEMP FUSIBLE LINK.
 - 30 HIGH TEMP FUSIBLE LINK.
 - MGV MECHANICAL GAS VALVE.
 - EGV ELECTRICAL GAS VALVE.
 - 34 REMOTE MANUAL PULL STATION.
 - S SWIVEL ADAPTOR.

BFPE International
 113 Bestwood Drive
 Clayton, NC 27520



SECTION VIEW - MODEL 6024ND-2-PSP-F
 HOOD - #1
 DUCT NOZZLE AND
 PLENUM SPRAY BAR LOCATION



SECTION VIEW - MODEL 6024ND-2-PSP-F
 HOOD - #2
 DUCT NOZZLE AND
 PLENUM SPRAY BAR LOCATION