

MODULAR STRUCTURE FOR:

WILLSCOT

TM

WILLSCOTTM

MODULAR PLANS DESIGN, CO.

MODULAR PLANS DESIGN, CO.
10745 S. FLORIDA AVE., SUITE 201
LAKELAND, FLORIDA 34746
TEL: 888-888-1114
FAX: 888-888-1114
MODPLANS@AOL.COM

MODULAR STRUCTURE FOR:

WILLSCOT

(36' x 60')

STRUCTURAL LOAD LIMITATIONS:	
DESIGN CODES 2018 NORTH CAROLINA BUILDING CODE	
ASCE 7-16 CODE	
BUILDING DEAD LOADS	
A. FLOOR - 10 PSF	
B. FLOOR - 10 PSF	
C. WALLS - 9 PSF	
WIND LOADS	
A. WIND SPEED	CONCENTRATED LOAD
B. FLOOR - 8 PSF	OVER 20 INCH (2 INCH AREA)
C. CORRIDOR - 100 PSF	LOCATED ANYWHERE ON FLOOR
ROOF SNOW LOAD: 25 PSF	
WIND LOAD CRITERIA:	
1. 120 MPH	WIND SPEED
2. 1	ROOF CATEGORY
3. 1	BUILDING CATEGORY
4. 2	EXPOSURE FACTOR
5. 0.85	INTERNAL PRESSURE COEFFICIENT
6. 1.0	WIND DIRECTIONALITY FACTOR (Kd)
7. 0.85	QUEST RESPONSE FACTOR (QF)
8. MAIN FRAME STRUCTURE OVERTURNING	
LOAD	
P ₁ = 80 PSF	
9. COMPONENT & CLADDING LOAD:	
(ROOF)	
P ₁ = 80 PSF	
P ₂ = 80 PSF	
10. ENCLOSED BUILDING ENCLOSURE CLASSIFICATION	
11. THIS BUILDING IS NOT DESIGNED FOR PLACEMENT ON THE LOWER HALF OF A HILL OR ESCARPMENT EXCEEDING 15 FEET IN HEIGHT	
SECONDARY LOAD: N/A	
FLOOD LOAD:	
THIS BUILDING IS NOT DESIGNED TO BE SUBMERGED OR SUBJECT TO HAVE ACTION WHEN LOCATED IN A FLOOD PRONE OR ZONE AREA. FINISH FLOOR ELEVATION MUST BE LOCATED ABOVE THE BUILDING SITE FLOOD PLANE LEVEL.	

MECHANICAL NOTES:	
1.	ALL SUPPLY AIR REGISTERS SHALL BE 16 INCHES X 10 INCHES ADJUSTABLE W/ 10 INCHES X 20 INCHES (INSIDE OVERHANG) FRIERGLASS GILT, UNLESS OTHERWISE SPECIFIED. DUCTS LOCATED IN UNVENTILATED ATTIC SPACES SHALL HAVE AN R-8 INSULATION VALUE. DUCTS LOCATED IN UNCONDITIONED INTERIOR SPACE, INTERIOR SPACES SHALL HAVE AN R-4 INSULATION VALUE.
2.	RESTROOM VENT FANS SHALL PROVIDE 50 CFM MINIMUM PER WATER CLOSET AND 100 CFM VENT FANS SHALL BE DUCTED TO THE EXTERIOR AND TERMINATE AT AN APPROVED VENT CAP.
3.	HVAC EQUIPMENT SHALL BE EQUIPPED WITH OUTSIDE FRESH AIR INTAKE PROVIDING 20 CFM FOR EACH OCCUPANT OR 20 CFM FOR EACH WATER HEATER CLOSET AND EACH URINAL, WHICHEVER IS GREATER.
PLUMBING NOTES:	
1.	CUSTOMER ASSUMES ALL RESPONSIBILITY FOR FINISHING WATER FACILITIES AND SERVICE SINCE WHEN NOT SHOWN ON THE FLOOR PLAN.
2.	TOLETS SHALL BE LOCATED WITH NON-ASSIGNMENT OPEN FRONT SEAT.
3.	RESTROOMS SHALL BE CODED WITH NON-ASSIGNMENT MATERIAL, TO A MINIMUM HEIGHT OF 72 INCHES A.F.F.
4.	ALL PLUMBING FITTINGS SHALL HAVE SEPARATE SHUT-OFF VALVES.
5.	WATER HEATER SHALL HAVE SHUT OFF VALVE WITH 1 INCH DRAIN TO EXTERIOR, 1/2" P RELIEF VALVE WITH DRAIN TO EXTERIOR, AND A SHUT OFF VALVE WITH 1/2" INCH COLD WATER SUPPLY LINE.
6.	DHW SYSTEM SHALL BE EITHER GAS OR PVC, DWV OR COPPER, WHEN POLYETHYLENE SUPPLY LINES ARE INSTALLED THE MAXIMUM WATER HEATER TEMPERATURE SETTING IS 120°F. THE POLYETHYLENE PIPE SHALL BE INSTALLED IN ACCORDANCE WITH THE MANUFACTURER'S LIMITATIONS AND INSTRUCTIONS.
7.	WATER CLOSETS ARE TANK TYPE AND URINALS ARE FLOOR TANK TYPE UNLESS OTHERWISE SPECIFIED. BUILDING DRAIN AND CLEANOUTS ARE DESIGNED AND SIZED INSTALLED BY OTHERS.
8.	SUBJECT TO LOCAL JURISDICTION APPROVAL.
9.	SHOWERS SHALL BE CONTROLLED BY AN APPROVED MIXING VALVE WITH A MAXIMUM WATER OUTLET SURFACE USE OF 2.2 L (1/2" C.I.).
10.	THERMAL EXPANSION DEVICE, IF REQUIRED BY WATER HEATER INSTALLED, AND IF NOT SHOWN ON PLUMBING PLAN, IS DESIGNED AND SIZED INSTALLED BY OTHERS, SUBJECT TO LOCAL JURISDICTION AND APPROVAL.

GENERAL NOTES:	
1.	ACCESS TO BUILDING FOR PERSONS IN WHEEL CHAIRS IS DESIGNED BY AND FIELD BUILT BY OTHERS AND SUBJECT TO ALL LOCAL JURISDICTIONS AT LEAST 50% OF PUBLIC ENTRANCES INCLUDING PRIMARY ENTRANCES AND ALL READING EXITS MUST BE ACCESSIBLE.
2.	ALL DOORS SHALL BE OPERABLE FROM THE EXTERIOR SIDE WITHOUT THE USE OF A KEY, TOOL, SPECIAL KNOWLEDGE OR FORCE, MANUALLY OPERATED FLOOR BOLTS OR SURFACE BOLTS SHALL NOT BE USED.
3.	ALL LEADING EDGES OF 1/4 INCH AND OF DOORS, WHICHEVER BOTTOM EDGE IS LESS THAN 60 INCHES ABOVE THE FLOOR, AND ALL GLAZING DOORS SHALL BE SAFETY, TEMPERED OR ACRYLIC PLASTIC SHEET.
4.	FLOOR DESIGN LIVE LOAD: 100 PSF (LOBBIES & CORRIDORS); 50 PSF (HALLWAYS); 60 PSF (MINIMUM WIND LOAD); 120 PSF.
5.	OCCUPANCY IS BUSINESS.
6.	CONSTRUCTION IS TYPE III-B (BASED ON 10 PERSON PER 100 SQUARE FEET OF BUSINESS AREA).
7.	ALL STEEL TENSORS REFERENCED ON FLOOR PLAN SHALL BE 1/2 INCH X 2 INCH X 10 INCH (S.A.) 3/16 INCH CHROMIUM 1/2 INCH STAINLESS WITH A MINIMUM OF 1" PENETRATION EACH END OF STRAP ON MAIN CORRIDOR WIDTH 14 INCHES.
8.	MIN. CORRIDOR FINISH IS CLASS B COPPER.
9.	WINDSTOP AND DOOR HIGH RISE ROOMS (ELEVATOR ROOM) TO BE SUPPLIED AND SIZED INSTALLED BY OTHERS AND INSPECTION REQUIRED BY CHAPTER 611.3 TO BE DONE BY THE LOCAL FIRE SAFETY INSPECTION.
10.	PORTABLE FIRE EXTINGUISHER PER NFPA 101 INSTALLED BY OTHERS ON SITE, AND SUBJECT TO LOCAL JURISDICTION AND APPROVAL.
11.	THIS BUILDING REQUIRES A FIRE SEPARATION DISTANCE IN ACCORDANCE WITH TABLE 602 OF THE 2018 NORTH CAROLINA BUILDING CODE.
12.	WHEN LOW USE OF ROOF PROVIDED IS LESS THAN 6" OF OVERHANG DOWNSPOUTS AND DOWNSPUTS WILL BE REQUIRED, SITE WILL BE CALLED AND SUBJECT TO LOCAL JURISDICTION.
13.	IMPACT RESISTANT EXTERIOR GLAZING SHALL BE PROTECTED WITH AND IMPACT RESISTANT COUPLING OR WITH MINIMUM 1/2" THICK POLYURETHANE PANELS PER SECTION 1004.4 OF THE IBC. PANELS SHALL BE PRECUT TO COVER THE GLAZED OPENINGS WITH ATTACHMENT HARDWARE PROVIDED PER TABLE 504.1 THE IMPACT RESISTANT COUPLING OR WOOD STRUCTURAL PANELS ARE TO BE PROVIDED ON SITE BY THE BUILDING OWNER SUBJECT TO LOCAL JURISDICTION AND APPROVAL, AND SOME DRIVING REGIONS ARE AREAS WITHIN ONE MILE OF THE COASTAL NEAR-HIGH WATER LINE WHERE THE BASIC WIND SPEED IS 110 MPH OR GREATER AND AREAS WHERE THE BASIC WIND SPEED IS 120 MPH OR GREATER.
14.	ALL MATERIALS USED IN THE CONSTRUCTION OF THE BUILDING WHICH ARE COVERED BY THE STATE BUILDING COMMISSION CHAPTER 602.000 RULES SHALL HAVE CURRENT STATE PRODUCT APPROVAL.
15.	THIS PLAN COMPLY WITH THE 2018 NORTH CAROLINA BUILDING CODE.
16.	THE BASED SEAL SET OF PLANS ARE ON FILE IN THE THIRD PARTY AGENT'S OFFICE AS DIRECTED BY OWNER.
ELECTRICAL NOTES:	
1.	ALL CIRCUITS AND EQUIPMENT SHALL BE GROUNDED IN ACCORDANCE WITH THE APPROPRIATE ARTICLE OF THE NATIONAL ELECTRICAL CODE (NEC).
2.	WHEN LIGHT FIXTURES ARE INSTALLED IN CLOSETS THEY SHALL BE SURFACE MOUNTED OR RECESSED. INCANDESCENT FIXTURES SHALL HAVE COMPLETELY ENCLOSED LAMPS. SURFACE MOUNTED INCANDESCENT FIXTURES SHALL HAVE A MINIMUM CLEARANCE OF 10 INCHES AND ALL OTHER FIXTURES SHALL HAVE A MINIMUM CLEARANCE OF 6 INCHES FROM STOWABLE AREA AS REQUIRED BY NEC 410.16.1.
3.	WHEN WATER HEATERS ARE INSTALLED THEY SHALL BE PROVIDED WITH HEAVY DUTY DISCONNECTS ADJACENT TO THE WATER HEATERS SERVING THE BRANCHED CIRCUIT SWITCH OR CIRCUIT BREAKER SHALL BE PERMITTED TO SERVE AS THE DISCONNECTING MEANS ONLY WHERE THE SWITCH OR CIRCUIT BREAKER IS WITHIN 5 FEET FROM THE WATER HEATER OR IS CAPABLE OF BEING LOCATED IN THE OPEN POSITION.
4.	THE EQUIPMENT SHALL BE PROVIDED WITH READILY ACCESSIBLE DISCONNECTS ADJACENT TO THE EQUIPMENT SERVED, A UNIT SWITCH WITH A MINIMUM 100% POSITION THAT IS PART OF THE BRAC EQUIPMENT AND DISCONNECTS ALL UNGROUNDED CONDUCTORS SHALL BE PROVIDED AS AT LEAST ONE DISCONNECTING MEANS FOR EACH BRANCHED CIRCUIT PROVIDED. A READILY ACCESSIBLE CIRCUIT BREAKER.
5.	WHEN THE ELECTRICAL SYSTEM IS INTERRUPTING RATING OF THE MAIN BREAKER SHALL BE DESIGNATED AND VERIFIED AS BEING IN COMPLIANCE WITH SECTION 100.6 OF THE NEC BY LOCAL JURISDICTION.
6.	THE MAIN ELECTRICAL PANEL AND FEEDERS ARE DESIGNED BY OTHERS, SITE INSTALLED AND SUBJECT TO LOCAL JURISDICTION APPROVAL.
7.	ALL CIRCUITS CROSSING OVER MODULAR MATING LINES SHALL BE SITE CONNECTED WITH APPROVED ACCESSIBLE JUNCTION BOXES OR CABLE CONNECTIONS.
8.	REFERENCE STATE APPROVED PACKAGE FOR ELECTRICAL WIRING DIAGRAM.
9.	IF THE ALARM PULL STATION OPERABLE DEVICE SHALL BE LOCATED AT 48 INCHES ABOVE THE FLOOR THE ALARM HORN / STROBE DEVICE SHALL BE WALL MOUNTED WITH THE BOTTOM EDGE 80 INCHES ABOVE THE FLOOR.
10.	EXTERIOR LIGHTS NOT INTENDED FOR 24 HOUR USE AND SHALL BE CONNECTED TO A PHOTOCELL OR TIMER.
11.	ALL RECEPTACLES INSTALLED IN WET LOCATIONS (EXIT DOORS) SHALL BE IN WEATHER PROOF (WP) ENCLOSURES, THE INTENSITY OF WHICH IS NOT INDICATED WHEN INFORMATION PLUG IS INSERTED OR REMOVED.
12.	WHEN NOT SHOWN ON THE PLANS PROVISIONS FOR DETROIT DISCHARGE LIGHTING INCLUDING EXIT DISCHARGE EQUIPMENT LIGHTING ARE DESIGNED BY OTHERS AND THE RESPONSIBILITY OF THE BUILDING OWNER AND SUBJECT TO LOCAL JURISDICTION APPROVAL.

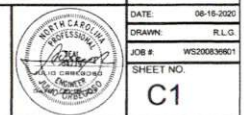
ACCESSIBILITY NOTES:	
1.	THE INTERNATIONAL SYMBOL OF ACCESSIBILITY SIGN SHALL BE DISPLAYED AT ALL ACCESSIBLE RESTROOM FACILITIES AND AT ACCESSIBLE BUILDING ENTRANCES UNLESS AN ENTRANCE IS ACCESSIBLE. ACCESSIBLE ENTRANCES SHALL HAVE BROADCASTING, SOME INDICATING THE ROUTE TO THE NEAREST ACCESSIBLE ENTRANCE.
2.	ACCESSIBLE FOUNTAINS SHALL HAVE A SPOUT HEIGHT NO HIGHER THAN 36 INCHES ABOVE THE FLOOR AND EDGE OF BASIN NO HIGHER THAN 34 INCHES ABOVE THE FLOOR FOR INDIVIDUALS IN WHEELCHAIRS. ADDITIONAL DRINKING WATER PROVISIONS SHALL BE MADE FOR INDIVIDUALS WHO HAVE DIFFICULTY IN DRINKING.
3.	WHERE STORAGE FACILITIES SUCH AS CABINETS, SHELVES, CLOSETS, AND DRAWERS ARE PROVIDED AT LEAST ONE OF EACH TYPE PROVIDED SHALL CONTAIN STORAGE SPACE COMPATIBLE WITH THE FOLLOWING: DOORS, ETC. TO SUCH SPACES SHALL BE ACCESSIBLE IN TOUCH LATCHED (L-SHAPED PULL) SPACES SHALL BE WITHIN 8 INCHES MINIMUM AND ACCESSIBLE TO THE FLOOR FOR FORWARD REACH OF 3 INCHES MINIMUM AND 4 INCHES MAXIMUM OF THE FLOOR FOR REAR REACH. CLOTHES RODS SHALL BE 48 INCHES ABOVE THE FLOOR. 1/4 INCH MAXIMUM WHEN DISTANCE FROM WELLDROP TO ROD EXCEEDS 10 INCHES.
4.	COUNTERS & DISPENSERS RECEPTACLES AND OTHER OPERABLE EQUIPMENT SHALL BE NO HIGHER THAN 48 INCHES ABOVE THE FLOOR FOR FRONT APPROACH OR 54 INCHES ABOVE THE FLOOR FOR SIDE APPROACH. RECEPTACLES ON WALLS SHALL BE MOUNTED NO HIGHER THAN 48 INCHES ABOVE THE FLOOR. EXCEPTION: HEIGHT LIMITATIONS DO NOT APPLY WHERE THE USE OF SPECIAL EQUIPMENT DICTATED OTHERWISE OR WHERE ELECTRICAL RECEPTACLES ARE NOT NORMALLY INTENDED FOR USE BY BUILDING OCCUPANTS.
5.	WHERE EMERGENCY WARNING SYSTEMS ARE PROVIDED, THEY SHALL INCLUDE BOTH AUDIBLE AND VISUAL ALARMS. THE VISUAL ALARMS SHALL BE LOCATED THROUGHOUT, INCLUDING RESTROOMS, AND PLACED: IN ROOMS ABOVE THE FLOOR OR 8 INCHES BELOW CEILING, WHICH IS LOWER; IN DOORS TO ALL ACCESSIBLE SPACES SHALL HAVE ACCESSIBLE HORIZONTAL (SLIDER), OPERATED, PUSH-TYPE, (L-SHAPED) MOUNTED NO HIGHER THAN 48 INCHES ABOVE THE FLOOR; ALL DOORS SHALL BE OPERABLE BY A SINGLE EFFORT; THE MAXIMUM FORCE REQUIRED TO OPERATE A DOOR SHALL NOT EXCEED 5 LBS. FOR EXTERIOR BURNING DOORS AND 15 LBS. FOR ALL SLIDING, FOLDING, AND INTERIOR BURNING DOORS.
6.	FLOOR SURFACES SHALL BE STABLE, FIRM AND UNPUNCTURED. CHANGES IN LEVEL BETWEEN 2 1/2 INCHES AND 2 INCHES SHALL BE BEVELLED WITH A SLOPE NO GREATER THAN 1/2". CHANGES IN LEVEL, GREATER THAN 0.3 INCH, INCLUDING RAMP, CARRY PILE THICKNESS SHALL BE 0.5 INCH MAX. GRATING IN FLOOR SHALL HAVE SPACES NO GREATER THAN 1/2 INCH WISE IN ONE DIRECTION. JOINTS IN GRATING SHALL NOT EXCEED 2 1/2 INCHES.
7.	ACCESSIBLE WATER CLOSETS SHALL BE 18 INCHES FROM THE FLOOR TO THE TOP OF THE SEAT. GRAB BARS SHALL BE 36 INCHES LONG, MINIMUM SPAN LOCATED BETWEEN THE WATER CLOSET AND 42 INCHES MINIMUM WHEN LOCATED ALONG THE SIDE OF THE WATER CLOSET AND SHALL BE MOUNTED 33 INCHES FROM THE FLOOR TO THE TOP OF THE BAR, WITH 3 INCH MINIMUM SPAN.
8.	ACCESSIBLE URINALS SHALL BE STALL-TYPE OR WALL-HUNG WITH ELONGATED RIMS AT A MAXIMUM OF 17 INCHES ABOVE THE FLOOR.
9.	ACCESSIBLE LAVATORIES SHALL BE MOUNTED WITH THE RIM NO HIGHER THAN 34 INCHES ABOVE THE FLOOR AND A CLEARANCE OF AT LEAST 30 INCHES ABOVE THE FLOOR TO THE BOTTOM OF THE APRON.
10.	ACCESSIBLE SINKS SHALL BE MOUNTED WITH RIM NO HIGHER THAN 34 INCHES ABOVE THE FLOOR AND A CLEARANCE OF AT LEAST 37 INCHES HIGH, 30 INCHES WIDE, AND 19 INCHES DEEP. ADJUSTMENT SINK: THE SINK DEPTH SHALL BE 6 INCHES MINIMUM.
11.	WET WATER AND GRANITE SURFACES, INCLUDING LAVATORIES AND SINKS SHALL BE INSTALLED ON OTHERWISE CONFOUNDED TO PREVENT CONTACT, INSULATION OR PROTECTION MATERIAL MAY BE SITE INSTALLED. THERE SHALL BE NO STAMP OR ABRASIVE SURFACES UNDER ACCESSIBLE LAVATORIES AND SINKS.
12.	ACCESSIBLE LAVATORIES AND SINKS SHALL HAVE ACCESSIBLE FAUCETS (4 LEVEL OPERATED, PUSH-TYPE, ELECTRONICALLY CONTROLLED).
13.	WHERE MIRRORS ARE TO BE PROVIDED ABOVE A LAVATORY OR COUNTERTOP, IT SHALL BE INSTALLED WITH THE BOTTOM EDGE OF THE REFLECTING SURFACE NO HIGHER THAN 48 INCHES ABOVE FINISHED FLOOR, WHERE MIRRORS ARE PROVIDED, AT LEAST ONE SHALL BE LOCATED WITH A MIRROR SHEET NO HIGHER THAN 48 INCHES ABOVE THE FLOOR.
14.	GRADE MARKS REQUIRED FOR ACCESSIBILITY SHALL BE 1/2 INCH HIGH X 1 INCH IN DIAMETER WITH 1/2 INCHES CLEAR SPACE BETWEEN THE MARK AND THE WALL.
15.	TOILET STALL DOORS SHALL BE THE SELF-CLOSING TYPE.
16.	A TOWEL DISPENSER SHALL BE LOCATED ADJACENT TO ALL ACCESSIBLE LAVATORIES.
17.	WATER CLOSET FLUSH CONTROL SHALL BE MOUNTED ON THE WIDE SIDE OF THE CLOSET.

SITE INSTALLED NOTES:	
NOTE: THAT THIS LIST DOES NOT NECESSARILY LIMITS THE ITEMS OF WORK AND MATERIALS THAT MAY BE REQUIRED FOR A COMPLETE INSTALLATION. ALL SITE RELATED ITEMS ARE SUBJECT TO LOCAL JURISDICTION AND APPROVAL.	
1.	THE COMPLETE FOUNDATION SUPPORT AND THE FOUNDATION SYSTEM.
2.	RAMPING, STAIRS AND GENERAL ACCESS TO THE BUILDING.
3.	IF POSSIBLE, FIRE EXTINGUISHERS.
4.	DRINKING FOUNTAIN, BUILDING DRAINS, CLEAN-OUTS, AND HOOD-UP TO PLUMBING SYSTEM.
5.	ELECTRICAL SERVICE HOOK-UP, INCLUDING FEEDERS TO THE BUILDING.
6.	THE MAIN ELECTRICAL PANEL AND SUB-PANELS (MAXIMUM 10 ONLY).
7.	CONNECTION OF ELECTRICAL CIRCUITS CROSSING OVER MODULAR MATING LINES (S) (MAXIMUM 10 ONLY).
8.	STRUCTURAL AND AESTHETIC INTERCONNECTIONS BETWEEN WINDOW AND DOOR HIGH WIND STORM COVERS PER CODE.
9.	GUTTERS AND DOWNSPOUTS (IF APPLICABLE).
10.	TRUNK AND CONDUIT SYSTEMS.
11.	THE ALARM SYSTEM WIRING, ETC.
12.	THERMAL EXPANSION DEVICE IS REQUIRED.
STATE CODES:	
NORTH CAROLINA	
2018 NORTH CAROLINA BUILDING CODE	
2018 CAROLINA FIRE PREVENTION CODE	
2018 NORTH CAROLINA E903 & 900 CODE	
2018 NATIONAL ELECTRICAL CODE	
2018 NORTH CAROLINA PLUMBING CODE	
2018 NORTH CAROLINA MECHANICAL CODE	
2018 NORTH CAROLINA GAS CODE	
2018 NORTH CAROLINA ENERGY CONSERVATION CODE	
OCCUPANCY BUSINESS	
CONSTRUCTION TYPE V-B	
DRAWING INDEX:	
01	COVER SHEET
A1	FLOOR PLAN
A1T	ELECTRICAL PLAN
A2	ELEVATIONS
A3	CROSS SECTION
A4	FOUNDATION PLAN
ELEVATION NOTES (TYP.):	
1.	SEE CROSS SECTION FOR METHOD OF ROOF VENTILATION.
2.	HANGING WALLS, STAIRS (S), AND HANDRAILS ARE TO BE DESIGNED AND SITE INSTALLED BY OTHERS, SUBJECT TO LOCAL JURISDICTION AND APPROVAL.
3.	FOUNDATION ENCLOSURE (WHEN PROVIDED) MUST HAVE 1 SQUARE FOOT NET AREA PER 10 SQUARE FEET OF FLOOR AREA. FOUNDATION ENCLOSURE DRAIN, SPACE ACCESS, SITE INSTALLED BY OTHERS, SUBJECT TO LOCAL JURISDICTION AND APPROVAL.

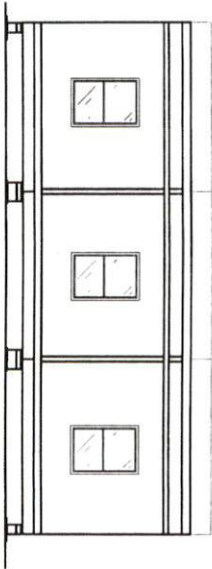
AS-BUILT BUILDING NOTES:	
REGULATION OF THIS BUILDING IS SUBJECT TO THE APPROVAL OF THE LOCAL JURISDICTION. THESE PLANS HAVE NOT BEEN PREPARED BASED ON THE CURRENT CODES, BUT THE CODES THAT WERE IN EFFECT AT THE TIME OF INITIAL CONSTRUCTION.	
THE ARCHITECT OR ENGINEER ARE NOT RESPONSIBLE FOR ANY DAMAGE TO OR ALTERATIONS IN THE BUILDING, BUILDING DESIGN, OR CODE REVISIONS THAT WERE MADE AFTER THE INITIAL APPROVAL OF THE BUILDING.	
IF THE STATE LABEL HAS BEEN LOST, REMOVED OR STOLEN THEN IT IS UP TO THE LOCAL JURISDICTION TO REVIEW AND APPROVE THE ATTACHED BUILDING PLANS.	
THIS IS A SET OF STOCK AS-BUILT APPROVED BUILDING PLANS. THE ORIGINAL SET OF APPROVED PLANS IS NO LONGER AVAILABLE, THEREFORE THIS SET HAS BEEN PROVIDED FOR ACQUIRING A BUILDING PERMIT PER STATE STATUTE RULE 91.	

NOTICE	
PLEASE REVIEW PLANS COMPLETELY. ANY CORRECTIONS TO THESE PLANS MUST BE SITE INSTALLED BY SET OF CREW.	

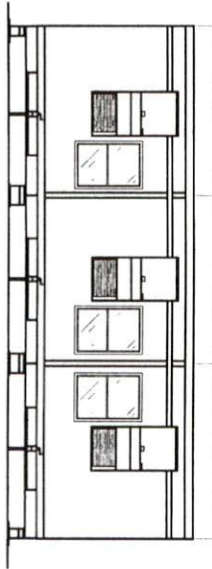
CONSULTING ENGINEER:	
JULIO ORRIBOSO	
NORTH CAROLINA	
P.E. LICENSE #004719	
REVISION DATE:	
DATE:	06-16-2020
DRAWN:	R.L.G.
JOB #:	WS200059601
SHEET NO.:	C1



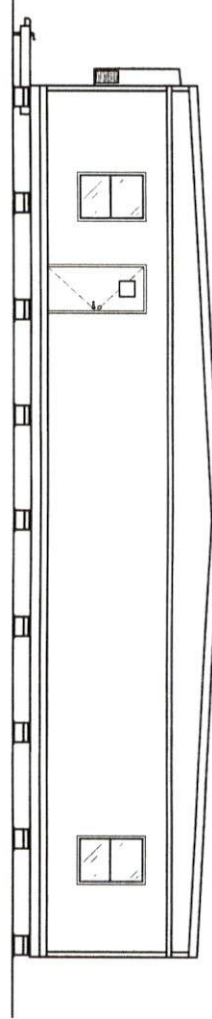
© COPYRIGHT 2020 - WILLSCOT PLANS DESIGN, CO.



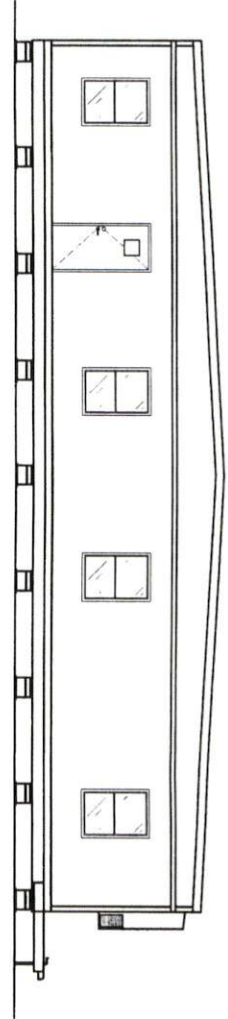
BACK ELEVATION
SCALE: 1/4" = 1'-0"



FRONT ELEVATION
SCALE: 1/4" = 1'-0"



RIGHT SIDE ELEVATION
SCALE: 1/4" = 1'-0"



LEFT SIDE ELEVATION
SCALE: 1/4" = 1'-0"

REVISION DATE:	DATE:
DESIGNED BY:	DRAWN BY:
CHECKED BY:	SCALE:
PROJECT NO.:	SHEET NO.:
A2	

CONSULT: TINA ROBERTS
 1000 W. UNIVERSITY BLVD.
 SUITE 100
 NORTH CHARLESTON, SC 29405
 TEL: 803.733.1111



MODULAR STRUCTURE FOR:
WILLSCOT
 (36' X 60')



MODULAR PLANS DESIGN, CO.

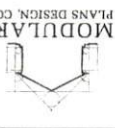
1074 S. FLORIDA AVE., SUITE 201
 LAKELAND, FLORIDA
 33803

PH: 863-686-1054
 FAX: 863-686-7116
 MODULARPLANS@TAMPABAYRR.COM



WILLSCOT

MODULAR PLANS DESIGN, CO.
 1074 S. FLORIDA AVE., SUITE 201
 TAMPA, FLORIDA 33603
 PH: 813-888-1004
 FAX: 813-888-1004



MODULAR STRUCTURE FOR:
WILLSCOT
 (36' X 60')

DATE: 08-15-2020
 DRAWN: PLEI
 JOB #: WSD0000001
 SHEET NO:
A1.1



ELECTRICAL PANEL 'A' SIZING

DESCRIPTION:

3.12	3.12
1.1	1.1
2.1	2.1
3.1	3.1
4.1	4.1
5.1	5.1
6.1	6.1
7.1	7.1
8.1	8.1
9.1	9.1
10.1	10.1
11.1	11.1
12.1	12.1
13.1	13.1
14.1	14.1
15.1	15.1
16.1	16.1
17.1	17.1
18.1	18.1
19.1	19.1
20.1	20.1
21.1	21.1
22.1	22.1
23.1	23.1
24.1	24.1
25.1	25.1
26.1	26.1
27.1	27.1
28.1	28.1
29.1	29.1
30.1	30.1
31.1	31.1
32.1	32.1
33.1	33.1
34.1	34.1
35.1	35.1
36.1	36.1
37.1	37.1
38.1	38.1
39.1	39.1
40.1	40.1
41.1	41.1
42.1	42.1
43.1	43.1
44.1	44.1
45.1	45.1
46.1	46.1
47.1	47.1
48.1	48.1
49.1	49.1
50.1	50.1
51.1	51.1
52.1	52.1
53.1	53.1
54.1	54.1
55.1	55.1
56.1	56.1
57.1	57.1
58.1	58.1
59.1	59.1
60.1	60.1
61.1	61.1
62.1	62.1
63.1	63.1
64.1	64.1
65.1	65.1
66.1	66.1
67.1	67.1
68.1	68.1
69.1	69.1
70.1	70.1
71.1	71.1
72.1	72.1
73.1	73.1
74.1	74.1
75.1	75.1
76.1	76.1
77.1	77.1
78.1	78.1
79.1	79.1
80.1	80.1
81.1	81.1
82.1	82.1
83.1	83.1
84.1	84.1
85.1	85.1
86.1	86.1
87.1	87.1
88.1	88.1
89.1	89.1
90.1	90.1
91.1	91.1
92.1	92.1
93.1	93.1
94.1	94.1
95.1	95.1
96.1	96.1
97.1	97.1
98.1	98.1
99.1	99.1
100.1	100.1

TOTAL: 125.00 KW
 TOTAL / 240 X 1000: 23.71 AMPS
 INSTALL: 120 AMP PANEL 120 / 240V 10

ELECTRICAL SCHEDULE

CIRCUIT	DESCRIPTION	BREAKER	WIRE SIZE	CL. MK.
1	120V AC	60A 2P	6-2	6-2
2	120V AC	60A 2P	6-2	6-2
3	120V AC	60A 2P	6-2	6-2
4	120V AC	60A 2P	6-2	6-2
5	120V AC	60A 2P	6-2	6-2
6	120V AC	60A 2P	6-2	6-2
7	120V AC	60A 2P	6-2	6-2
8	120V AC	60A 2P	6-2	6-2
9	120V AC	60A 2P	6-2	6-2
10	120V AC	60A 2P	6-2	6-2
11	120V AC	60A 2P	6-2	6-2
12	120V AC	60A 2P	6-2	6-2
13	120V AC	60A 2P	6-2	6-2
14	120V AC	60A 2P	6-2	6-2
15	120V AC	60A 2P	6-2	6-2
16	120V AC	60A 2P	6-2	6-2
17	120V AC	60A 2P	6-2	6-2
18	120V AC	60A 2P	6-2	6-2
19	120V AC	60A 2P	6-2	6-2
20	120V AC	60A 2P	6-2	6-2
21	120V AC	60A 2P	6-2	6-2
22	120V AC	60A 2P	6-2	6-2
23	120V AC	60A 2P	6-2	6-2
24	120V AC	60A 2P	6-2	6-2
25	120V AC	60A 2P	6-2	6-2
26	120V AC	60A 2P	6-2	6-2
27	120V AC	60A 2P	6-2	6-2
28	120V AC	60A 2P	6-2	6-2
29	120V AC	60A 2P	6-2	6-2
30	120V AC	60A 2P	6-2	6-2
31	120V AC	60A 2P	6-2	6-2
32	120V AC	60A 2P	6-2	6-2
33	120V AC	60A 2P	6-2	6-2
34	120V AC	60A 2P	6-2	6-2
35	120V AC	60A 2P	6-2	6-2
36	120V AC	60A 2P	6-2	6-2
37	120V AC	60A 2P	6-2	6-2
38	120V AC	60A 2P	6-2	6-2
39	120V AC	60A 2P	6-2	6-2
40	120V AC	60A 2P	6-2	6-2
41	120V AC	60A 2P	6-2	6-2
42	120V AC	60A 2P	6-2	6-2
43	120V AC	60A 2P	6-2	6-2
44	120V AC	60A 2P	6-2	6-2
45	120V AC	60A 2P	6-2	6-2
46	120V AC	60A 2P	6-2	6-2
47	120V AC	60A 2P	6-2	6-2
48	120V AC	60A 2P	6-2	6-2
49	120V AC	60A 2P	6-2	6-2
50	120V AC	60A 2P	6-2	6-2
51	120V AC	60A 2P	6-2	6-2
52	120V AC	60A 2P	6-2	6-2
53	120V AC	60A 2P	6-2	6-2
54	120V AC	60A 2P	6-2	6-2
55	120V AC	60A 2P	6-2	6-2
56	120V AC	60A 2P	6-2	6-2
57	120V AC	60A 2P	6-2	6-2
58	120V AC	60A 2P	6-2	6-2
59	120V AC	60A 2P	6-2	6-2
60	120V AC	60A 2P	6-2	6-2
61	120V AC	60A 2P	6-2	6-2
62	120V AC	60A 2P	6-2	6-2
63	120V AC	60A 2P	6-2	6-2
64	120V AC	60A 2P	6-2	6-2
65	120V AC	60A 2P	6-2	6-2
66	120V AC	60A 2P	6-2	6-2
67	120V AC	60A 2P	6-2	6-2
68	120V AC	60A 2P	6-2	6-2
69	120V AC	60A 2P	6-2	6-2
70	120V AC	60A 2P	6-2	6-2
71	120V AC	60A 2P	6-2	6-2
72	120V AC	60A 2P	6-2	6-2
73	120V AC	60A 2P	6-2	6-2
74	120V AC	60A 2P	6-2	6-2
75	120V AC	60A 2P	6-2	6-2
76	120V AC	60A 2P	6-2	6-2
77	120V AC	60A 2P	6-2	6-2
78	120V AC	60A 2P	6-2	6-2
79	120V AC	60A 2P	6-2	6-2
80	120V AC	60A 2P	6-2	6-2
81	120V AC	60A 2P	6-2	6-2
82	120V AC	60A 2P	6-2	6-2
83	120V AC	60A 2P	6-2	6-2
84	120V AC	60A 2P	6-2	6-2
85	120V AC	60A 2P	6-2	6-2
86	120V AC	60A 2P	6-2	6-2
87	120V AC	60A 2P	6-2	6-2
88	120V AC	60A 2P	6-2	6-2
89	120V AC	60A 2P	6-2	6-2
90	120V AC	60A 2P	6-2	6-2
91	120V AC	60A 2P	6-2	6-2
92	120V AC	60A 2P	6-2	6-2
93	120V AC	60A 2P	6-2	6-2
94	120V AC	60A 2P	6-2	6-2
95	120V AC	60A 2P	6-2	6-2
96	120V AC	60A 2P	6-2	6-2
97	120V AC	60A 2P	6-2	6-2
98	120V AC	60A 2P	6-2	6-2
99	120V AC	60A 2P	6-2	6-2
100	120V AC	60A 2P	6-2	6-2

ALL PORTABLE APPLIANCES, INCLUDING V/A TO HAVE DISCONNECT IF NOT WITHIN VIEW OF ELECTRIC PANEL.

ELECTRICAL PANEL 'B' SIZING

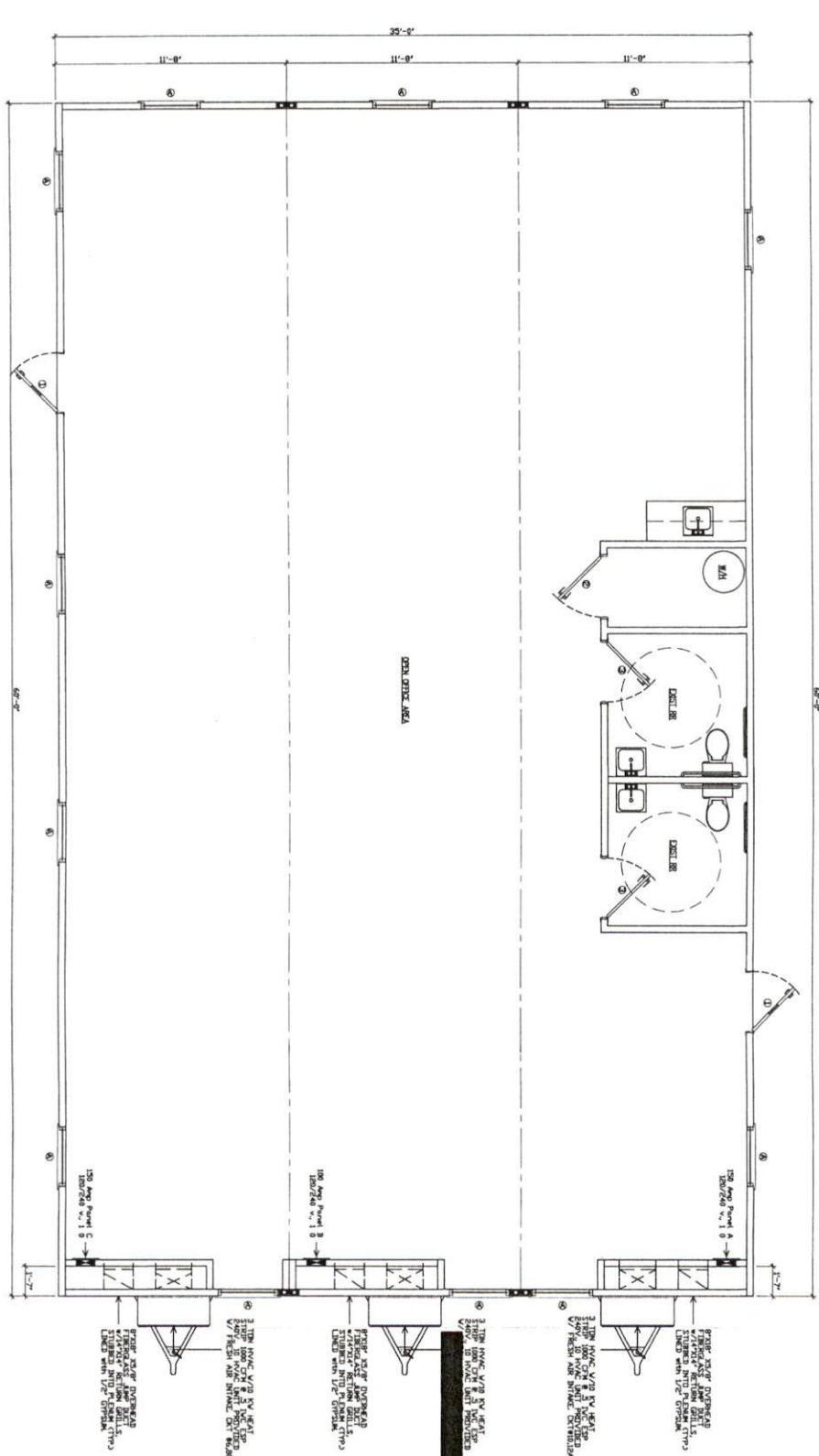
DESCRIPTION:

3.12	3.12
1.1	1.1
2.1	2.1
3.1	3.1
4.1	4.1
5.1	5.1
6.1	6.1
7.1	7.1
8.1	8.1
9.1	9.1
10.1	10.1
11.1	11.1
12.1	12.1
13.1	13.1
14.1	14.1
15.1	15.1
16.1	16.1
17.1	17.1
18.1	18.1
19.1	19.1
20.1	20.1
21.1	21.1
22.1	22.1
23.1	23.1
24.1	24.1
25.1	25.1
26.1	26.1
27.1	27.1
28.1	28.1
29.1	29.1
30.1	30.1
31.1	31.1
32.1	32.1
33.1	33.1
34.1	34.1
35.1	35.1
36.1	36.1
37.1	37.1
38.1	38.1
39.1	39.1
40.1	40.1
41.1	41.1
42.1	42.1
43.1	43.1
44.1	44.1
45.1	45.1
46.1	46.1
47.1	47.1
48.1	48.1
49.1	49.1
50.1	50.1
51.1	51.1
52.1	52.1
53.1	53.1
54.1	54.1
55.1	55.1
56.1	56.1
57.1	57.1
58.1	58.1
59.1	59.1
60.1	60.1
61.1	61.1
62.1	62.1
63.1	63.1
64.1	64.1
65.1	65.1
66.1	66.1
67.1	67.1
68.1	68.1
69.1	69.1
70.1	70.1
71.1	71.1
72.1	72.1
73.1	73.1
74.1	74.1
75.1	75.1
76.1	76.1
77.1	77.1
78.1	78.1
79.1	79.1
80.1	80.1
81.1	81.1
82.1	82.1
83.1	83.1
84.1	84.1
85.1	85.1
86.1	86.1
87.1	87.1
88.1	88.1
89.1	89.1
90.1	90.1
91.1	91.1
92.1	92.1
93.1	93.1
94.1	94.1
95.1	95.1
96.1	96.1
97.1	97.1
98.1	98.1
99.1	99.1
100.1	100.1

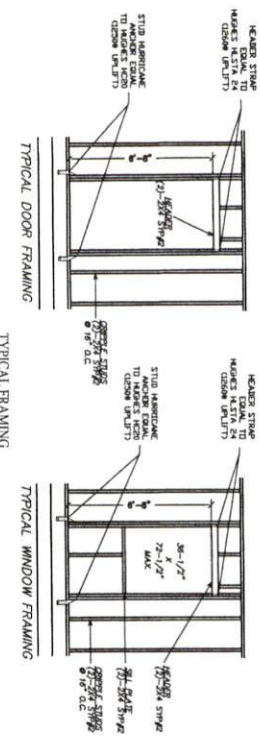
TOTAL: 125.00 KW
 TOTAL / 240 X 1000: 23.71 AMPS
 INSTALL: 120 AMP PANEL 120 / 240V 10

ELECTRICAL SCHEDULE

CIRCUIT	DESCRIPTION	BREAKER	WIRE SIZE	CL. MK.
1	120V AC	60A 2P	6-2	6-2
2	120V AC	60A 2P	6-2	6-2
3	120V AC	60A 2P	6-2	6-2
4	120V AC	60A 2P	6-2	6-2
5	120V AC	60A 2P	6-2	6-2
6	120V AC	60A 2P	6-2	6-2
7	120V AC	60A 2P	6-2	6-2
8	120V AC	60A 2		



FLOOR PLAN
 SCALE: 1/8" = 1'-0"



DOOR SCHEDULE		WINDOW SCHEDULE	
#	DESCRIPTION	QTY	HEADER JACKS/KINGS COMMENTS
1	36x64	2	EXISTING
2	36x64	1	EXISTING
3	36x64	0	EXISTING
4	36x64	0	EXISTING
5	36x64	0	EXISTING

REVISION DATE:

CONSULTING ENGINEER:
 JALAN OBERGADO
 PE LICENSE # 004714

DATE: 08-16-2020
 DRAWN: R.L.G.
 JOB #: WSC0808001
 SHEET NO: A1

MODULAR STRUCTURE FOR:
WILLSCOT
 (36' X 60')



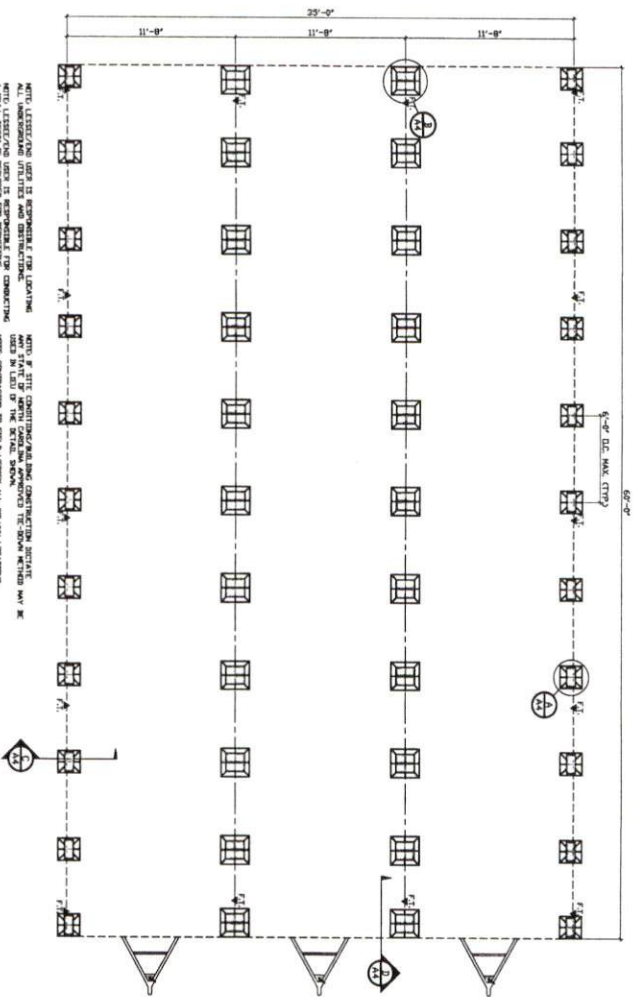
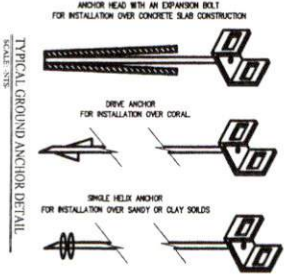
MODULAR PLANS DESIGN, CO.
 1074 S. FLORIDA AVE., SUITE 202
 LAKELAND, FLORIDA 33603
 PH: 863-688-1064
 FAX: 863-688-7118
 EMAIL: PLANS@TAMPABAY.RR.COM



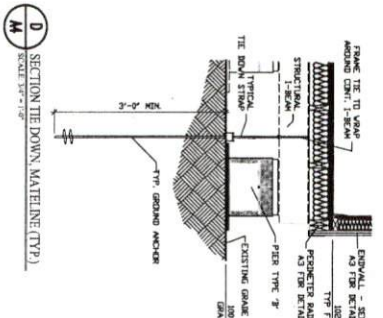
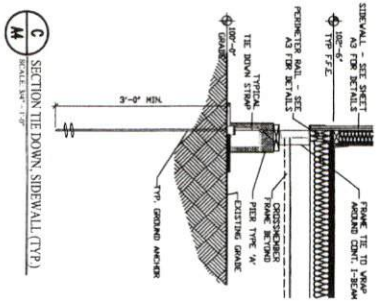
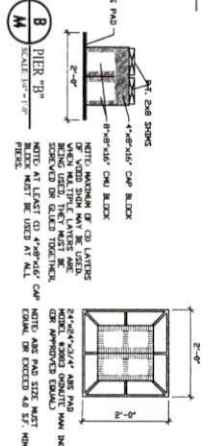
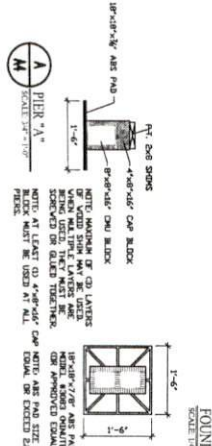
2018 NORTH CHICAGO BUILDING CODE COMPLIANCE ATTACHED: 1. LOCAL ORDINANCES - SEE SHAPPING SPECIALS 2. IBC - INTERNATIONAL BUILDING CODE, 2015 3. IBC - INTERNATIONAL MECHANICAL CODE, 2015

ANCHOR & STRAPPING SCHEDULE PER THE FOUNDATION PLAN, ALL ANCHORS SHALL BE INSTALLED IN ACCORDANCE WITH THE SCHEDULED ANCHOR & STRAPPING SCHEDULE. THE SCHEDULED ANCHOR & STRAPPING SCHEDULE SHALL BE USED TO DETERMINE THE ANCHOR & STRAPPING SCHEDULE FOR EACH ANCHOR. THE ANCHOR & STRAPPING SCHEDULE SHALL BE USED TO DETERMINE THE ANCHOR & STRAPPING SCHEDULE FOR EACH ANCHOR. THE ANCHOR & STRAPPING SCHEDULE SHALL BE USED TO DETERMINE THE ANCHOR & STRAPPING SCHEDULE FOR EACH ANCHOR.

SYMBOLS "A" - FRAME TIE DOWN ANCHOR "M" - 10' DIA. WOOD BLOCK
--



ALL TIE DOWN ANCHORS SHALL BE INSTALLED IN ACCORDANCE WITH THE FOUNDATION PLAN. THE FOUNDATION PLAN SHALL BE USED TO DETERMINE THE ANCHOR & STRAPPING SCHEDULE FOR EACH ANCHOR. THE ANCHOR & STRAPPING SCHEDULE SHALL BE USED TO DETERMINE THE ANCHOR & STRAPPING SCHEDULE FOR EACH ANCHOR. THE ANCHOR & STRAPPING SCHEDULE SHALL BE USED TO DETERMINE THE ANCHOR & STRAPPING SCHEDULE FOR EACH ANCHOR.



FOUNDATION NOTES:
 MATERIAL SPECIFICATIONS
 SOIL & SITE PREPARATION
 1. FOUNDATION DESIGN IS BASED ON AN ALLOWABLE SOIL BEARING PRESSURE OF 2500 PSF. ANY SOIL CONDITIONS THAT MAY DIFFER FROM THIS MUST BE SUBJECT TO A GEOTECHNICAL ENGINEER'S REVIEW AND APPROVAL.
 2. FOUNDATIONS SHALL BE SET ON UNDISTURBED SOIL OR PROPERLY COMPACTED FILL MATERIAL. COMPACTED SOILS SHALL BE TESTED TO A MINIMUM OF 95% PROCTOR IN ACCORDANCE WITH ASTM D1557.
 3. EROSION CONTROL MEASURES SHALL BE IMPLEMENTED TO PREVENT SOIL EROSION AND TO PROTECT FOUNDATION EXPOSURE AND TO PROTECT FOUNDATION FROM DAMAGE.
 4. LESSEE/USER IS RESPONSIBLE FOR INSURING THAT SITE/SOIL CONDITIONS MEET OR EXCEED THE REQUIREMENTS SHOWN.

GROUND ANCHORS:
 1. ALL WOOD BLOCKS AND SIGNS SHALL BE CEDEK OR PRESSURE TREATED WOOD & SHIM MATERIAL.
 2. ALL WOOD BLOCKS AND SIGNS SHALL BE CEDEK OR PRESSURE TREATED WOOD & SHIM MATERIAL.
 3. ALL WOOD BLOCKS AND SIGNS SHALL BE CEDEK OR PRESSURE TREATED WOOD & SHIM MATERIAL.
 4. ALL WOOD BLOCKS AND SIGNS SHALL BE CEDEK OR PRESSURE TREATED WOOD & SHIM MATERIAL.

INSTALLATION SPECIFICATIONS:
 1. THE FOUNDATION SHALL BE INSTALLED IN ACCORDANCE WITH THE FOUNDATION PLAN. THE FOUNDATION PLAN SHALL BE USED TO DETERMINE THE ANCHOR & STRAPPING SCHEDULE FOR EACH ANCHOR. THE ANCHOR & STRAPPING SCHEDULE SHALL BE USED TO DETERMINE THE ANCHOR & STRAPPING SCHEDULE FOR EACH ANCHOR. THE ANCHOR & STRAPPING SCHEDULE SHALL BE USED TO DETERMINE THE ANCHOR & STRAPPING SCHEDULE FOR EACH ANCHOR.

MINIMUM TIE:
 1. THE TENSION OF ALL PIER PADS BE INSTALLED PER FOUNDATION PLAN SHALL BE MAINTAINED TO THE TENSION SPECIFIED IN THE FOUNDATION PLAN. THE TENSION SHALL BE MAINTAINED TO THE TENSION SPECIFIED IN THE FOUNDATION PLAN. THE TENSION SHALL BE MAINTAINED TO THE TENSION SPECIFIED IN THE FOUNDATION PLAN.

FOUNDATION ANCHORS	ANCHOR TYPE	ANCHOR SIZE	ANCHOR SPACING
A	WIRE TIE	1/2\"/>	
M	WOOD BLOCK	10\"/>	

DESIGN DATE: 08-16-2023
 DRAWING NO: 23080000000000000000
 SHEET NO: A4
 CONSULTING ENGINEER: [Signature]
 NORTH CHICAGO BUILDING CODE PER CHAPTER 2018.10

MODULAR STRUCTURE FOR: WILLSCOT
 (36' X 60')
 MODULAR PLANS DESIGN, CO.

MODULAR PLANS DESIGN, CO.
 1074 S. FLORIDA AVE., SUITE 201
 LAKELAND, FLORIDA 33603
 PH: 863-686-1004
 FAX: 863-686-1004
 MODULARPLANS@TAMPABAY.FLR.COM

WILLSCOT
 TM