

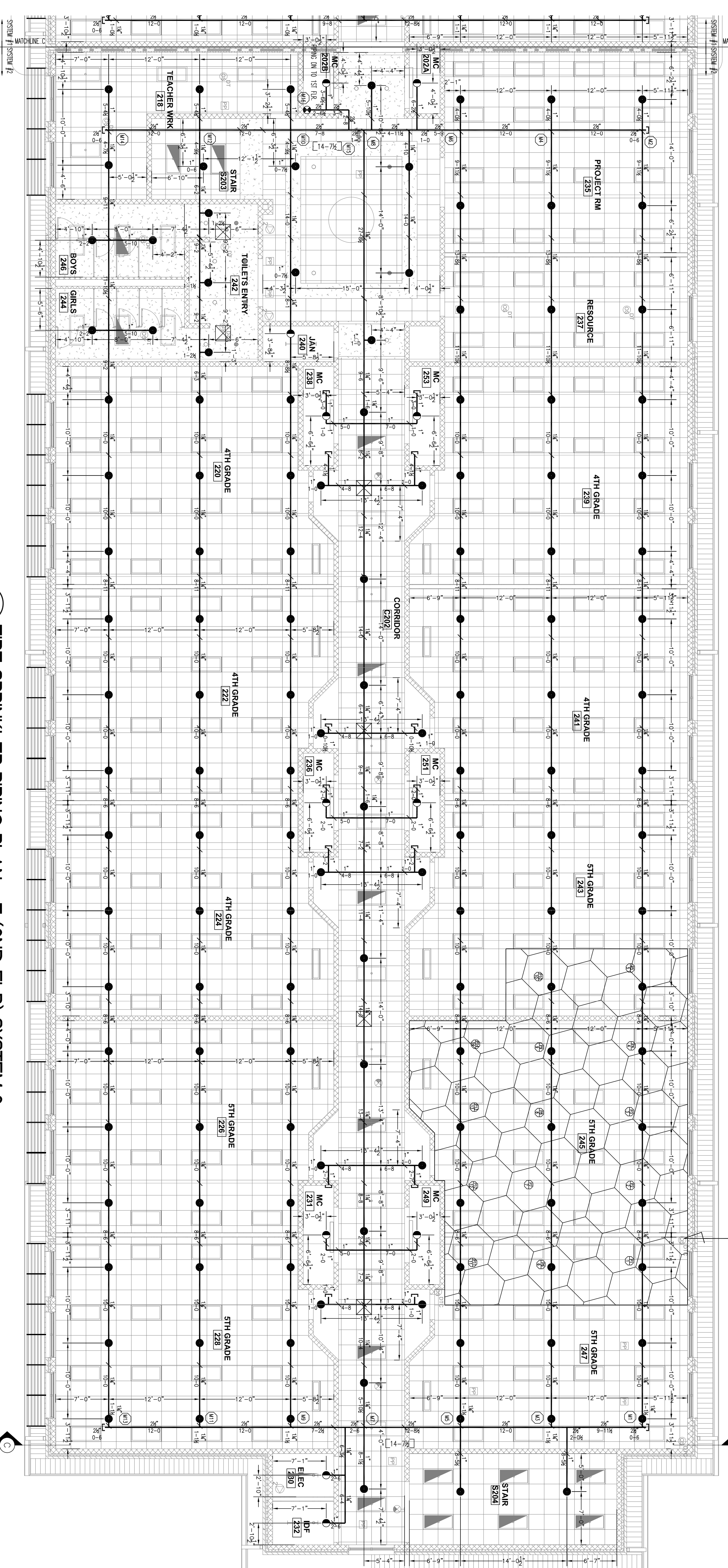




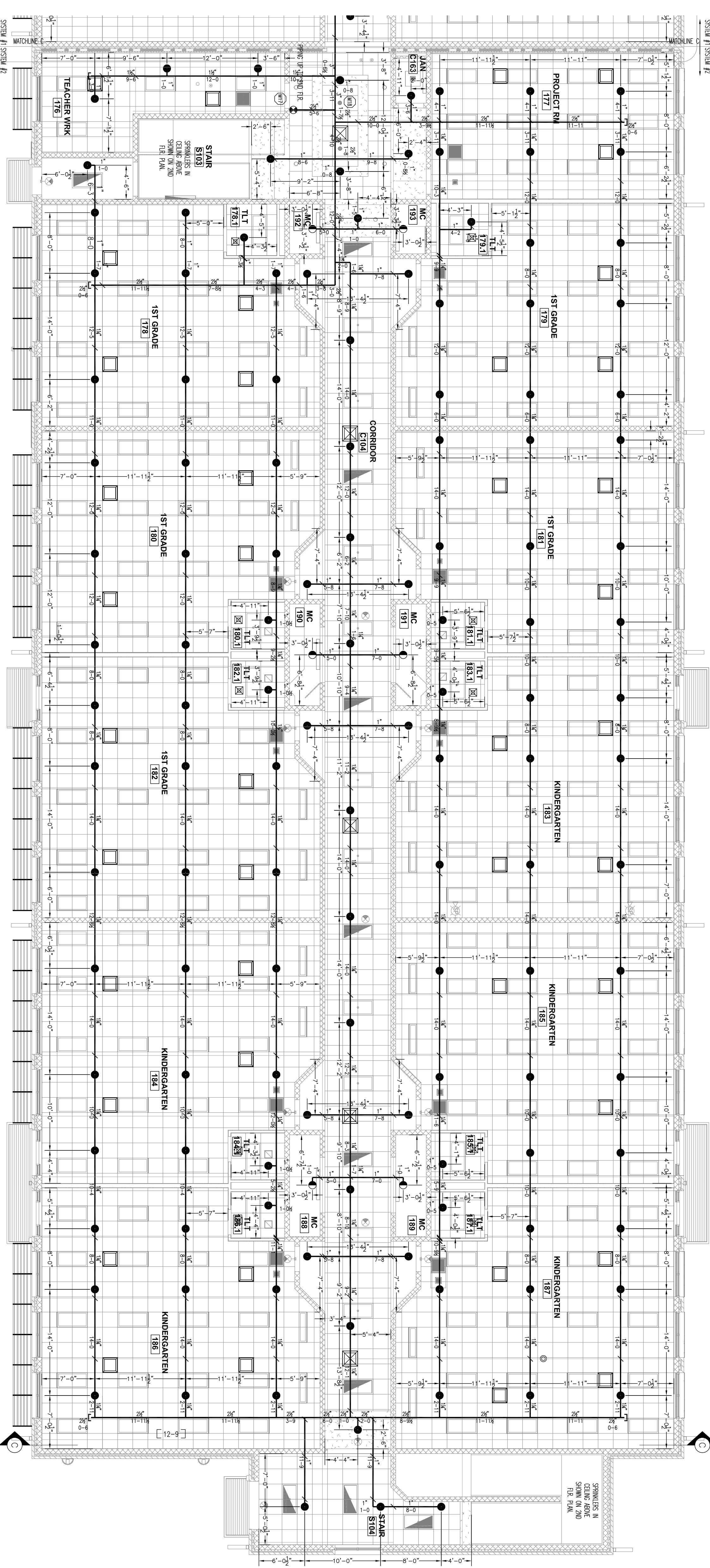




Design Area No. 1  
 1500  
 Flow 315.52gpm @ 31.461 psi  
 Includes 100 gpm hose allowance



**2 FIRE SPRINKLER PIPING PLAN - F (2ND FLR) SYSTEM 2**  
 SCALE: 1/8" = 1'-0" 1:0  
 SCALE: 1/8" = 1'-0"



**1 FIRE SPRINKLER PIPING PLAN - E (1ST FLR) SYSTEM 2**  
 SCALE: 1/8" = 1'-0" 1:0  
 SCALE: 1/8" = 1'-0"

NO.	SYMBOL	DESCRIPTION	QTY	UNIT	AMOUNT	REMARKS
1	1	1/2" NPT FLEX CLASSROOM	225	0.10	1,500	NFPA 13
2	2	1/2" NPT FLEX CLASSROOM	130	0.20	1,500	NFPA 13
3	3	1/2" NPT FLEX CLASSROOM	225	0.10	1,500	NFPA 13
4	4	1/2" NPT FLEX CLASSROOM	225	0.10	1,500	NFPA 13
5	5	1/2" NPT FLEX CLASSROOM	225	0.10	1,500	NFPA 13
6	6	1/2" NPT FLEX CLASSROOM	225	0.10	1,500	NFPA 13
7	7	1/2" NPT FLEX CLASSROOM	130	0.20	1,500	NFPA 13
8	8	1/2" NPT FLEX CLASSROOM	130	0.20	1,500	NFPA 13

SYMBOL	QTY	UNIT	AMOUNT	REMARKS
1	1	1/2" NPT FLEX CLASSROOM	225	0.10
2	2	1/2" NPT FLEX CLASSROOM	130	0.20
3	3	1/2" NPT FLEX CLASSROOM	225	0.10
4	4	1/2" NPT FLEX CLASSROOM	225	0.10
5	5	1/2" NPT FLEX CLASSROOM	225	0.10
6	6	1/2" NPT FLEX CLASSROOM	225	0.10
7	7	1/2" NPT FLEX CLASSROOM	130	0.20
8	8	1/2" NPT FLEX CLASSROOM	130	0.20

REVISIONS (NOTE: ALL REVISIONS ARE CIRCLED AND NUMBERED)	DATE	DESCRIPTION
1	07-29-20	ISSUE FOR PERMIT
2	07-29-20	ISSUE FOR PERMIT

**RELIABLE FIRE PROTECTION, LLC**  
 42 PATTIN RD, DUNN, NC 28334 P: 910-580-1234 F: 910-580-1235  
 1 IDENTIFY THE TEAM MEMBER WHO HAS REVIEWED THIS PLAN AND THE DATE OF REVIEW.  
 PROJECT: ERWIN ELEMENTARY SCHOOL  
 PROJECT NO: 2020-093  
 DATE: 07-29-20

**KEY PLAN**  
 ERWIN ELEMENTARY SCHOOL  
 301 S. 10TH ST. & DENNA DR.  
 ERWIN, NORTH CAROLINA 28339  
 PROJECT NO: 2020-093  
 DATE: 07-29-20  
 DRAWN BY: KESHIA PEAY  
 CHECKED BY: AS SHOWN  
 PROJECT NO: 2020-093  
 DATE: 07-29-20