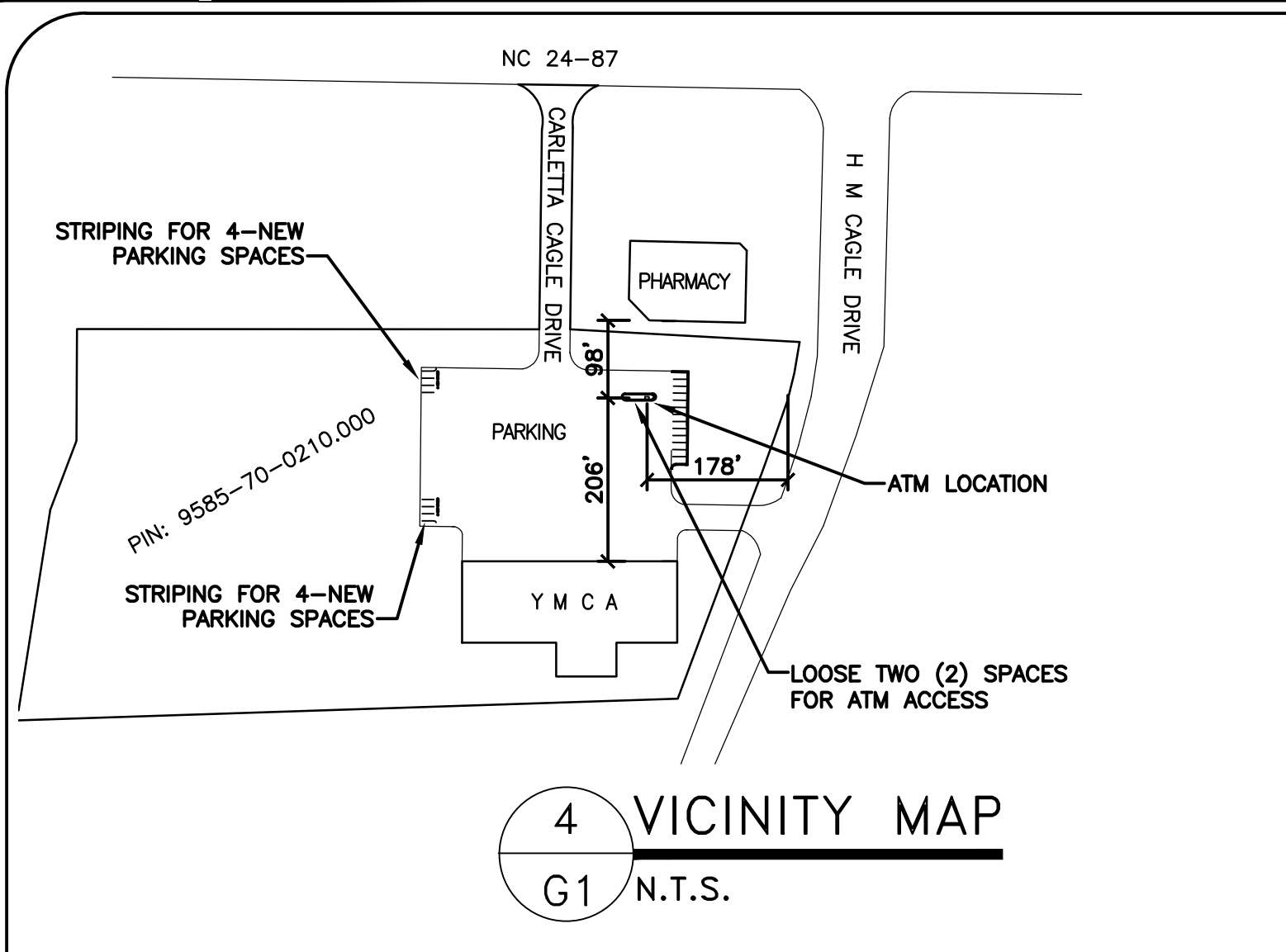


Drawing File: H:\2020\RoyWest\ATM-23May.dwg
 Plotted by: buddyj
 Plotted Date: May 23, 2020 - 8:18am



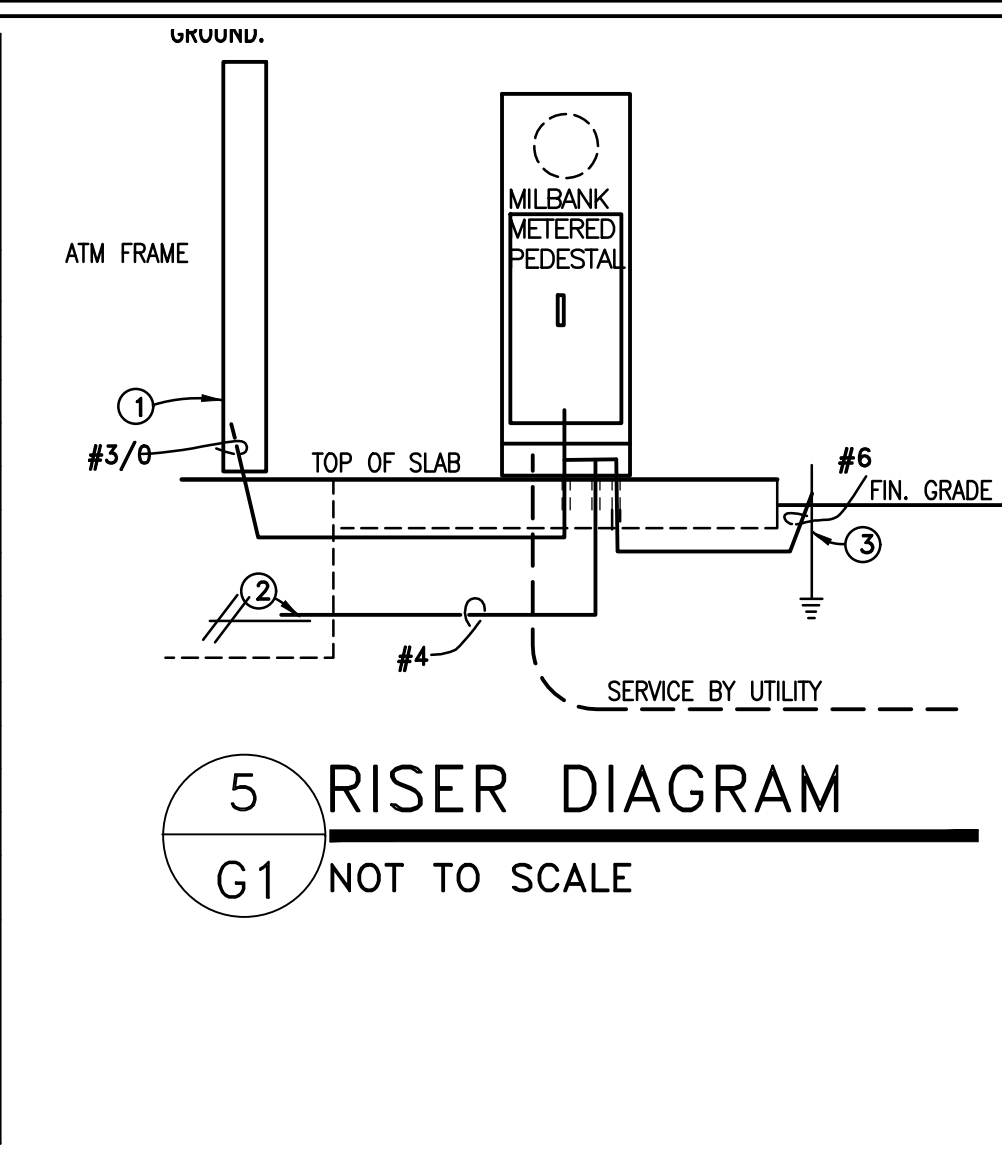
4 VICINITY MAP
G1 N.T.S.

PHASE LOADING		DESCRIPTION		CKT. NO.	WIRE SIZE	CKT. TRIP	CKT. NO.	WIRE SIZE	CKT. TYPE	DESCRIPTION	PHASE LOADING		
A	B	A	B							A	B		
2.75		ATM		N	#10	30/1	1			COMPANION ATM	1.92	0.85	
		SPARE				20/1	3			DUPLEX/SIGN/CANOPY			
0.50		ATM 2-POLE		N	#12	15/2	5			POLE LIGHT 1	0.75		
							7			POLE LIGHT 2	0.75		
0.90		OPTIONAL HTR		H	#12	20/2	9			SPACE			
							11			SPACE			
							13			SPACE			
							15			SPACE			
							17			SPACE			
							19			SPACE			
							21			SPACE			
							23			SPACE			
4.15	1.40	SUB-TOTAL (VA)								SUB-TOTAL (VA)		2.67	1.60

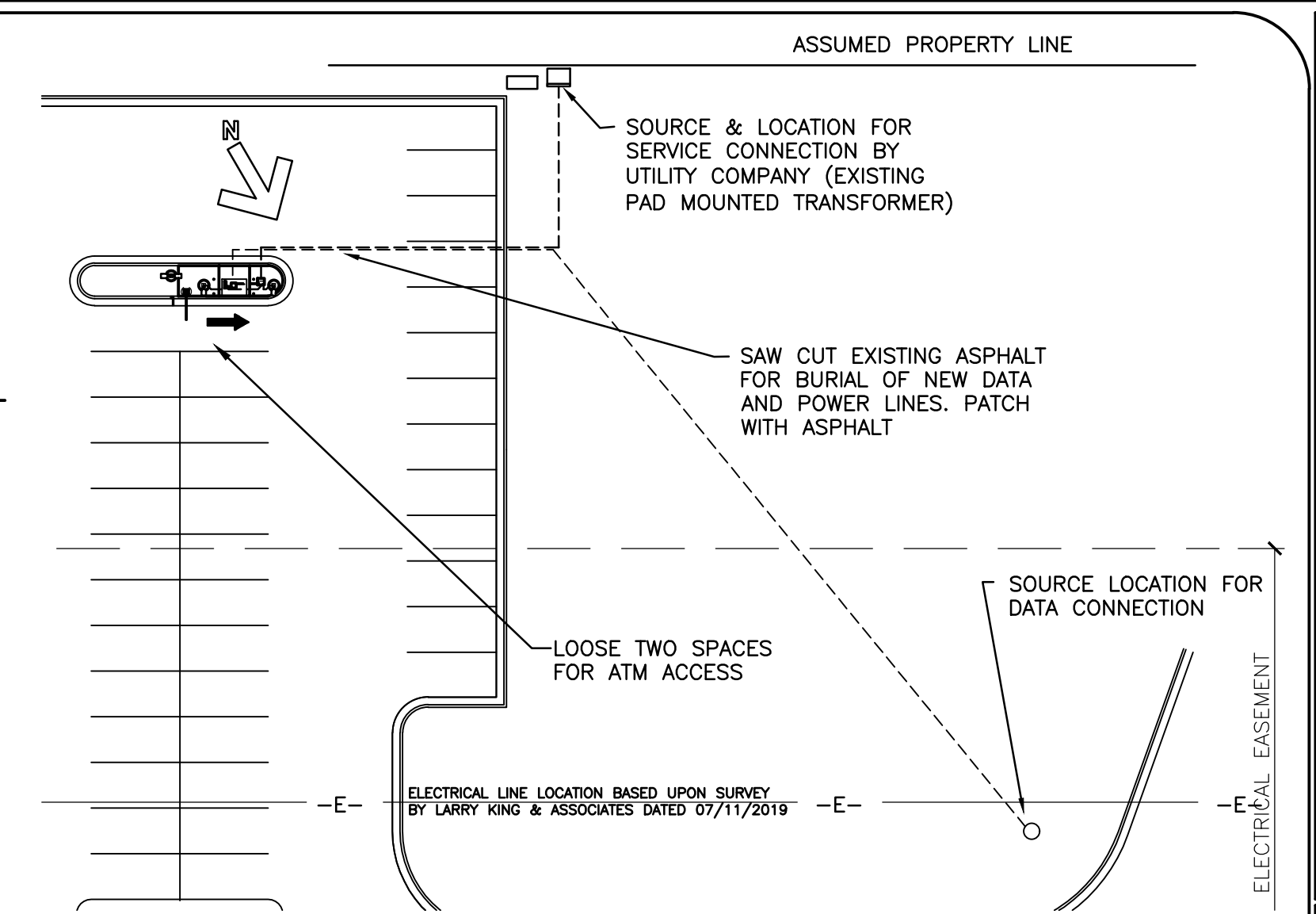
C CONTINUOUS LOAD E ESTIMATED LOAD
 H HVAC LOAD
 N NON-CONTINUOUS LOAD
 R RECEPTACLE LOAD
 K KITCHEN LOAD

TOTAL CONNECTED LOAD = **9.82 KVA** AMPS = **41**

TOTAL OF **24** SPACES



5 RISER DIAGRAM
G1 NOT TO SCALE



6 PARTIAL SITE LAYOUT
G1 1"=30'

ELECTRICAL NOTES:

ALL WORK SHALL BE IN ACCORDANCE WITH 2017 NEC.

WIRE AND CABLE SHALL BE INSULATED, TYPE THHN, 600 VOLTS, WITH COPPER CONDUCTORS. CONDUCTOR SIZES NO. 8 AWG AND LARGER MAY BE STRANDED. CONDUCTOR SIZES NO. 10 AWG AND SMALLER MAY BE SOLID OR STRANDED.

ROMEX CANNOT BE USED IN THIS PROJECT.

EMT SHALL BE GALVANIZED STEEL TUBING 1/2-INCH MINIMUM SIZE, EQUAL TO ELECTRUNITE BRAND OR APPROVED AND USED ONLY WITH HEXAGONAL ALL STEEL COMPRESSION FITTINGS. MC CABLE MAY BE SUBSTITUTED FOR CONDUIT RACEWAYS WHERE PERMITTED BY THE CODE, AND APPROVED BY OWNER.

PLASTIC CONDUIT SHALL BE RIGID, 3/4-INCH MINIMUM, NONMETALLIC, HEAVY DUTY, POLYVINYLCHLORIDE (PVC), TYPE I WILL BE USED FOR CONCRETE ENCASUREMENT, FITTINGS SHALL BE THE SAME MATERIALS AND MANUFACTURER AS THE PLASTIC CONDUIT.

FLEXIBLE METAL CONDUIT SHALL BE 1/2-INCH MINIMUM SINGLE STRIP, STEEL, HOT DIPPED GALVANIZED INSIDE AND OUTSIDE, MAXIMUM LENGTH OF 72 INCHES FOR LIGHTING, AND 36 INCHES FOR MOTORS. FLEXIBLE METAL CONDUIT SHALL BE LIQUID TIGHT OR WATER TIGHT WITH PVC JACKET WHERE USED IN DAMP, WET, OR OUTSIDE AREAS, AND LIQUID TIGHT OR WATER TIGHT CONNECTORS SHALL BE USED.

ALL CONDUCTORS SHALL BE COPPER WITH A MINIMUM SIZE OF #12 AWG EXCEPT FOR FIRE ALARM. THESE CONDUCTORS SHOULD COMPLY WITH NFPA REQUIREMENTS.

THE ELECTRICAL CONTRACTOR SHALL ALIGN ALL FIXTURES AS REQUIRED TO PROVIDE A UNIFORM PRESENTATION. FOLLOW THE MANUFACTURERS LITERATURE AND INSTALLATION DETAILS.

CIRCUIT BREAKERS AND WIRE ARE SIZED FOR SPECIFIC EQUIPMENT. BEFORE ORDERING WIRE, BREAKERS, FIXTURES, CONDUIT, AND ETC. FOR THIS PROJECT; THE ELECTRICAL CONTRACTOR SHALL COORDINATE WITH THE OTHER CONTRACTORS ON THE JOB AND VERIFY THE ELECTRICAL DATA FOR THE EQUIPMENT THAT WILL BE ACTUALLY INSTALLED. RECOMPUTE WIRE AND BREAKER SIZES IF REQUIRED BY THE NEC.

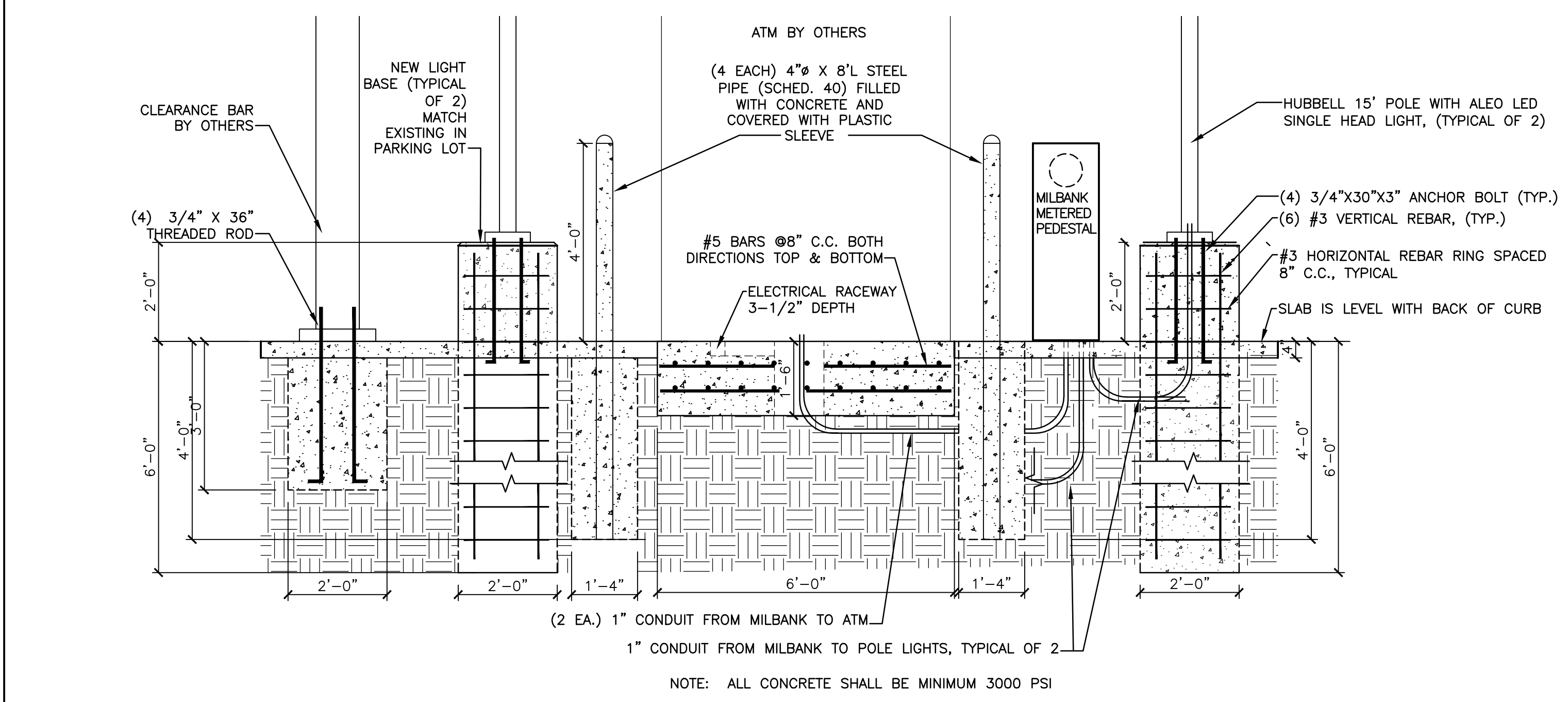
THE MOUNTING HEIGHTS AND LOCATIONS OF ALL WALL MOUNTED OUTLETS AND JUNCTION BOXES SHALL BE REVIEWED AND COORDINATED WITH THE GENERAL CONTRACTOR AND OWNER PRIOR TO INSTALLATION FOR USE WITH ACTUAL EQUIPMENT.

THE ELECTRICAL CONTRACTOR SHALL REFER TO THE DETAIL DRAWINGS FOR DIMENSIONS.

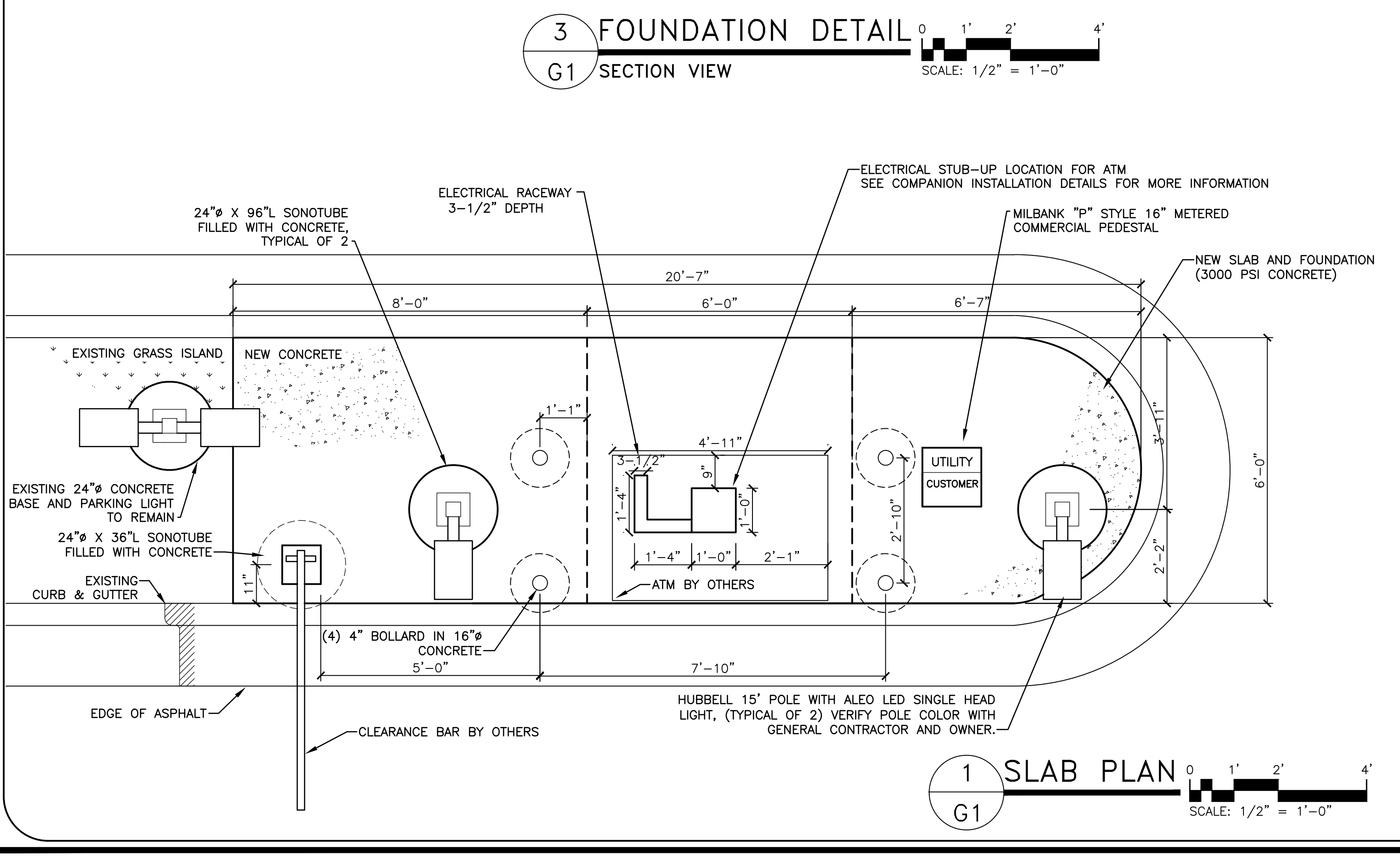
THE ELECTRICAL CONTRACTOR SHALL COORDINATE WITH OTHER TRADES INVOLVED IN THIS PROJECT PRIOR TO INSTALLATION OF HIS EQUIPMENT, SO AS TO AVOID CONFLICTS DURING CONSTRUCTION AND ALLOW FOR OPTIMUM WORKING SPACE AND MAINTENANCE. THINK OF OTHER CONTRACTORS AND THEIR REQUIREMENTS IN VERTICAL CHASES AND WALL MOUNT SPACE.

THE ELECTRICAL CONTRACTOR SHALL PROVIDE NAMEPLATES FOR IDENTIFICATION OF ALL EQUIPMENT, SWITCHES, PANELS, ETC. THE NAMEPLATES SHALL BE LAMINATED PHENOLIC PLASTIC, BLACK FRONT AND BACK WITH WHITE CORE, WHITE ENGRAVED LETTERS (1/4 INCH MINIMUM) ETCHED INTO THE WHITE CORE. NAME TAGS TO BE MOUNTED WITH SELF-TAPPING SHEET METAL SCREWS.

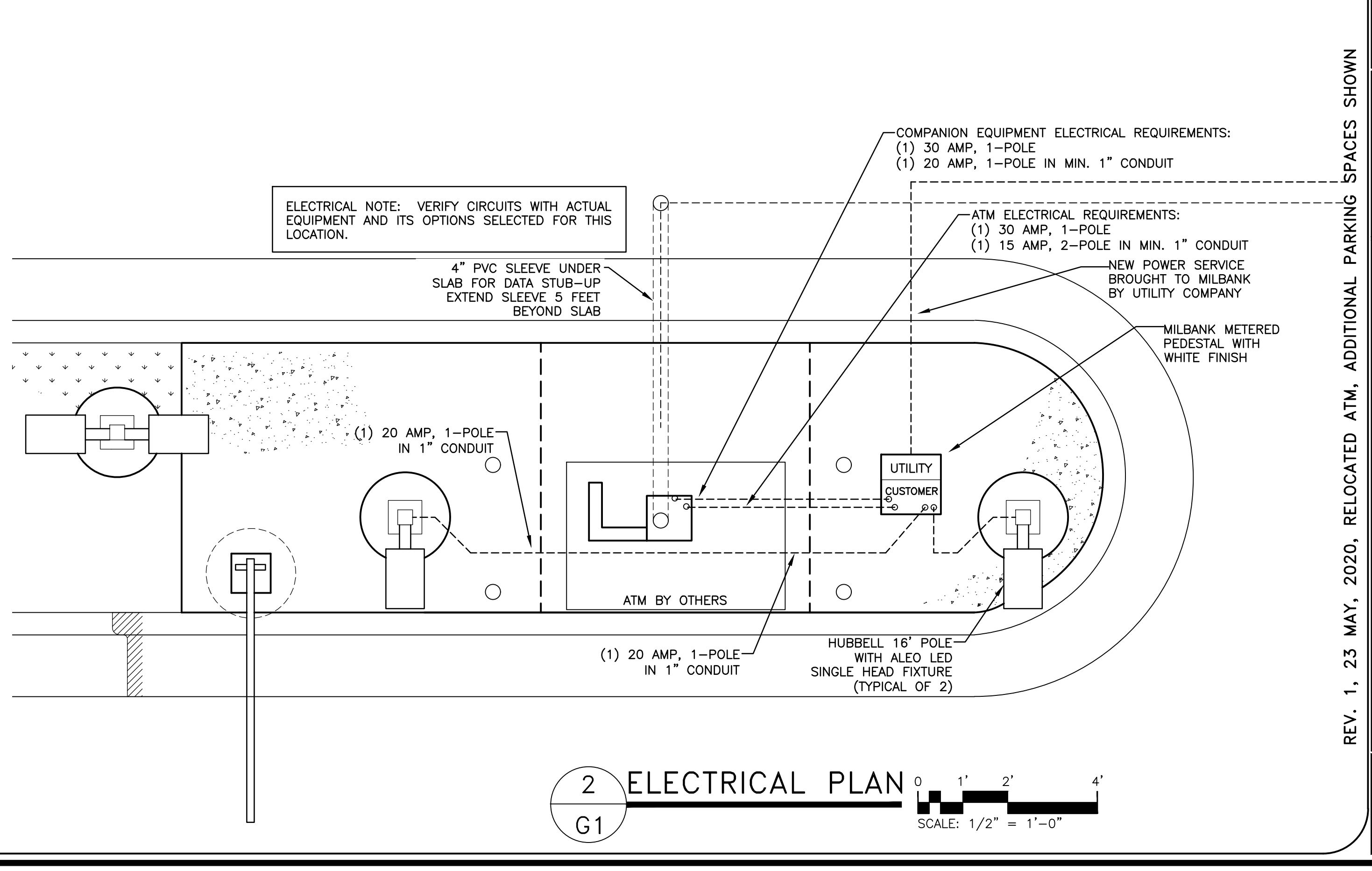
THE ELECTRICAL CONTRACTOR IS NOT TO SCALE THE DRAWINGS FOR EQUIPMENT AND LIGHT FIXTURES TO BE INSTALLED. THE DRAWINGS ARE FOR DIAGRAMMATIC PURPOSES ONLY TO SHOW GENERAL LOCATION. THE ELECTRICAL CONTRACTOR TO COORDINATE EXACT LOCATION OF EQUIPMENT AND LIGHT FIXTURES WITH THE GENERAL CONTRACTOR AND/OR ATM AND CABINET DRAWINGS AND DETAIL.



3 FOUNDATION DETAIL
G1 SECTION VIEW
SCALE: 1/2" = 1'-0"



1 SLAB PLAN
G1
SCALE: 1/2" = 1'-0"



2 ELECTRICAL PLAN
G1
SCALE: 1/2" = 1'-0"

RAYWEST DESIGNBUILD

PROJECT: **BRAGG MUTUAL FEDERAL CREDIT UNION ATM**
87 CARLETTA CAGLE DRIVE CAMERON, NC 28326

SHEET: **G1**

DATE: **23 MAY 2020**