

G&S Lighting Plant 2

S&S Lighting

use	HP	FLA	breaker	cond. wire	wire	grd
feeder	① 7 1/2	11	20	3/4	#10	#12
screen	② 50	65	100	1"	#3	#8
conveyor	③ 30	40	80	3/4	#8	#8
screw	④ 15	21	40	3/4	#10	#10
screw	⑤ 15	21	40	3/4	#10	#10
stacking conveyor	⑥ 30	40	80	3/4	#8	#8
Water pump	⑦ 75	96	125	existing	4/0	#6
service	⑧		400	2-2"	4-3/0 ea	

Service Panel

400 Amp 277/480 3Ø4W MB

SE listed NEMA I 42K AIC

1- 250 A 3pole

1- 125 A 3pole

1- 20 A 3pole

2- 30 A provision

Load of all equipment

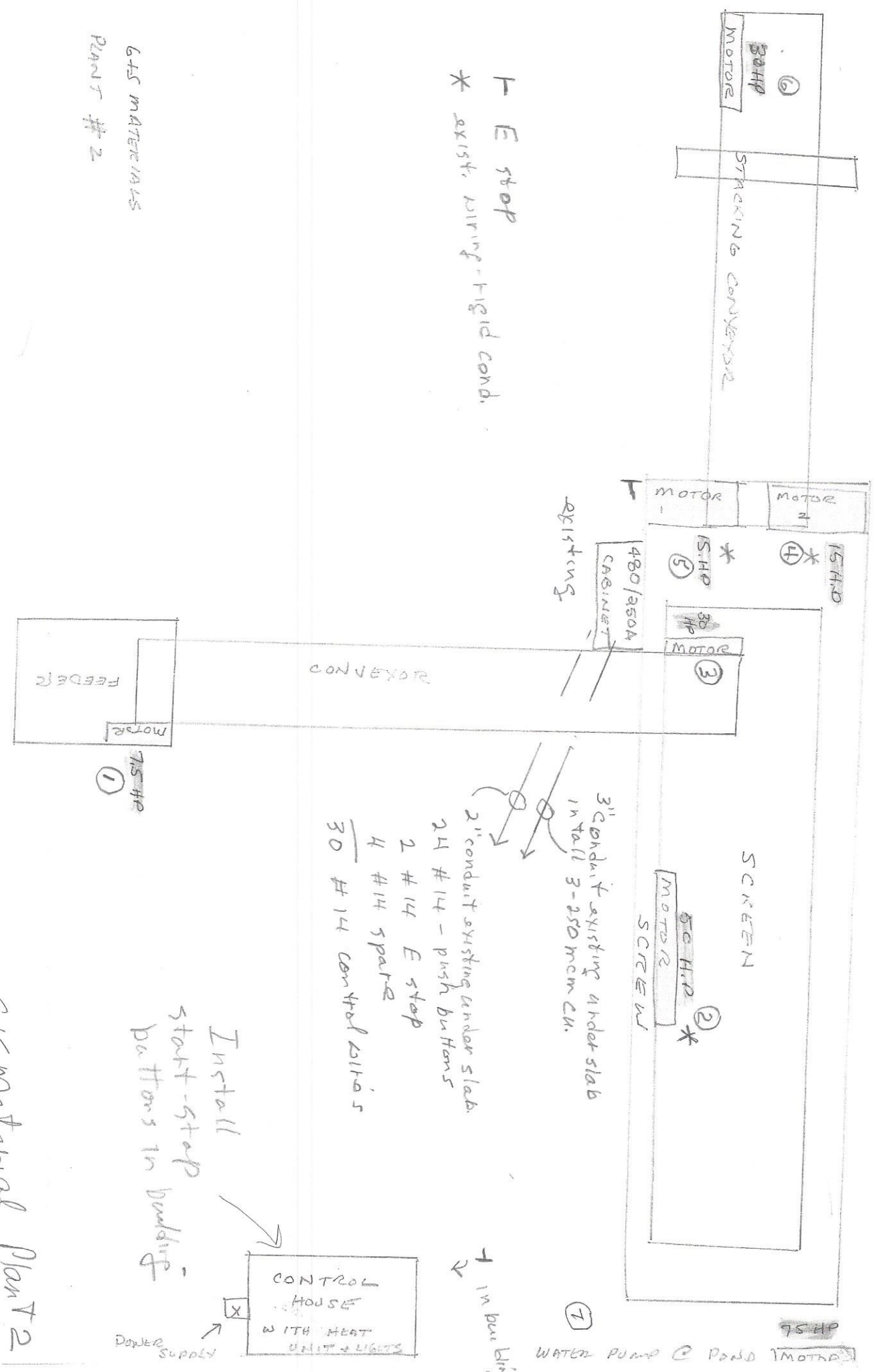
Total HP 294

96 largest motor @ 125% = 120

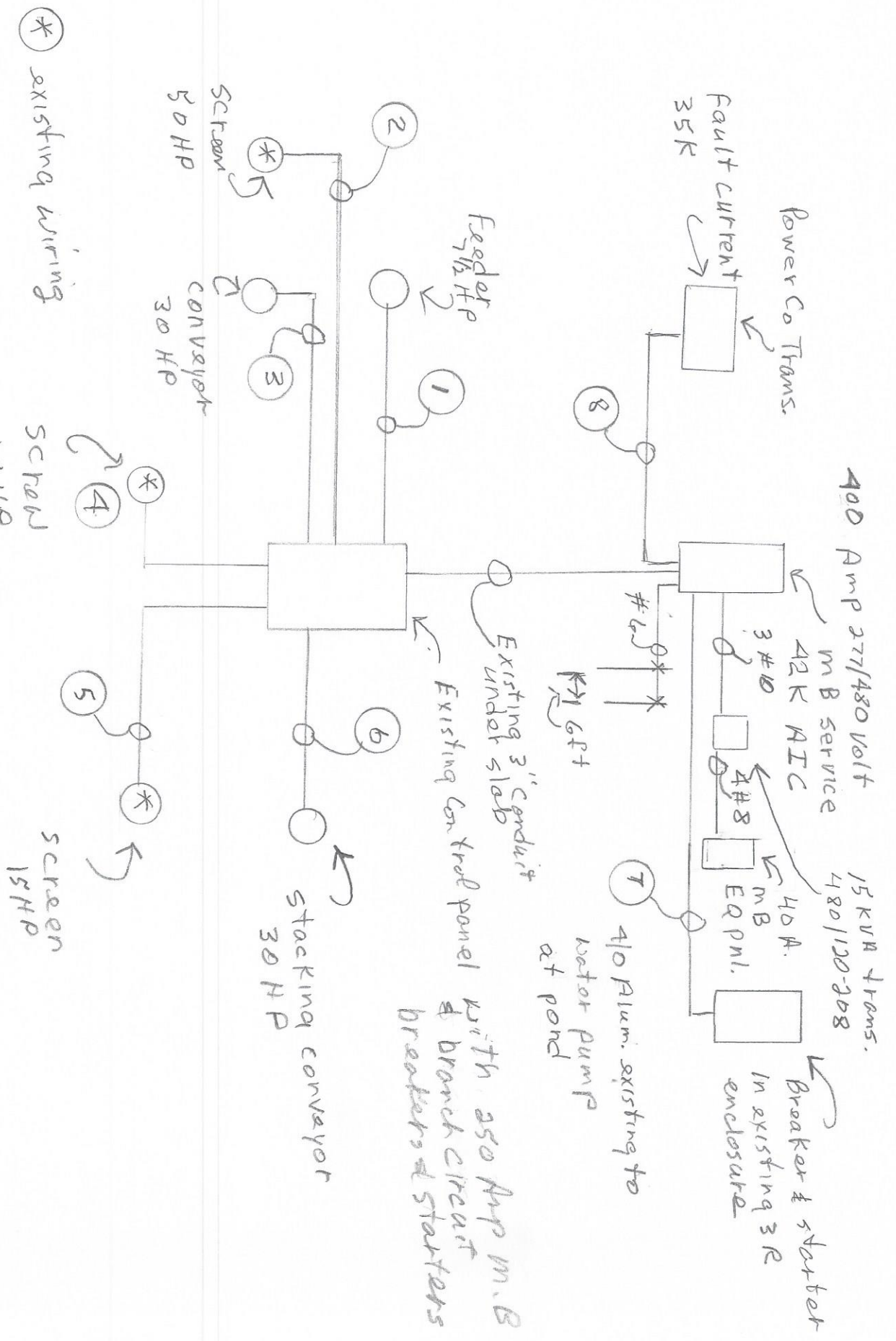
rest of load 198

Total 318

Equip. layout



GTS Material Plant 2
S&S LIGHTING



* existing wiring

Note - All motors are within 75 FT & not over 50' from breakers

G-#5 Motor and Plant 2
S&S lighting