

2nd Floor  
Joist

2x4" walls  
3/8" drywall  
both sides

4-13  
INSULATION

Floor Joists

4" CONC

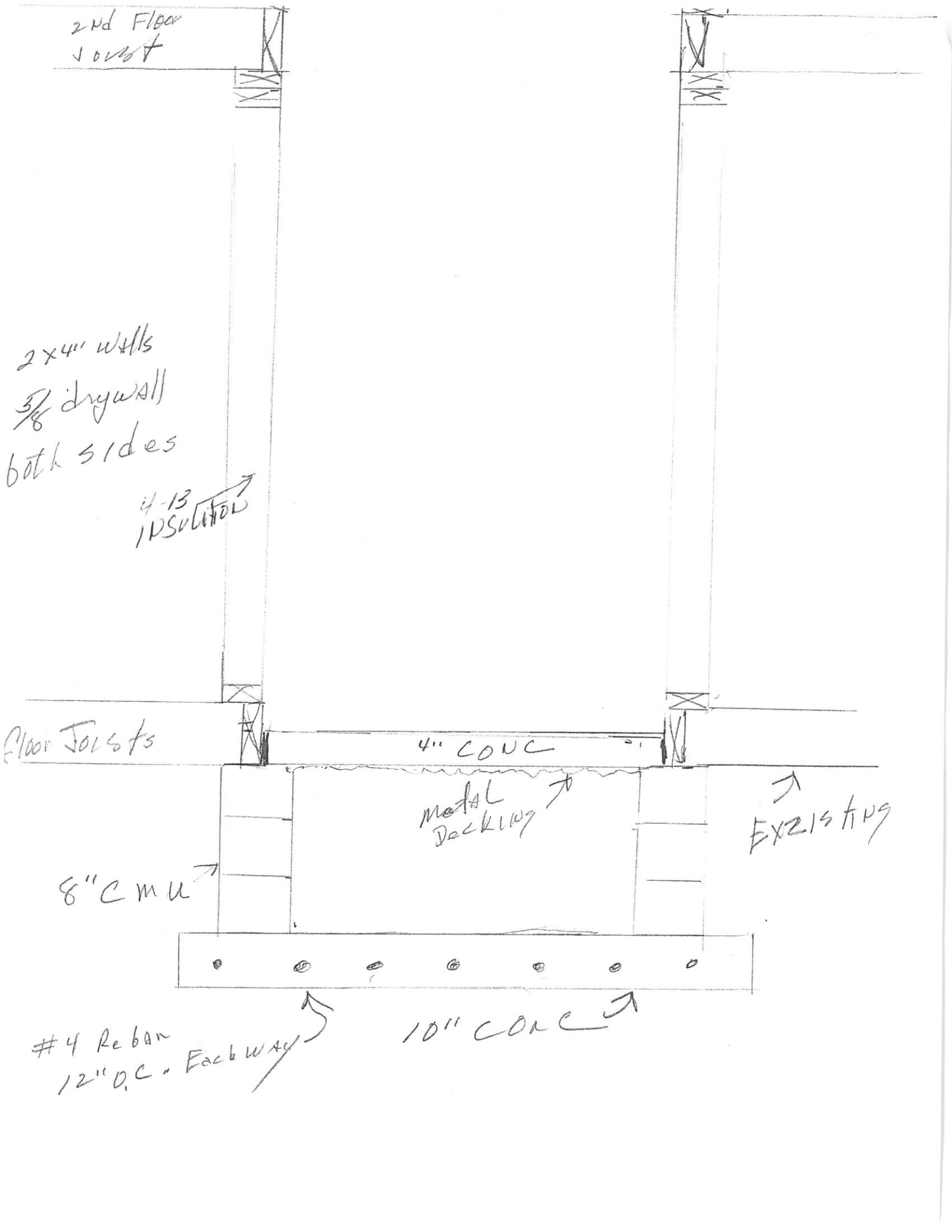
metal  
Decking

EXISTING

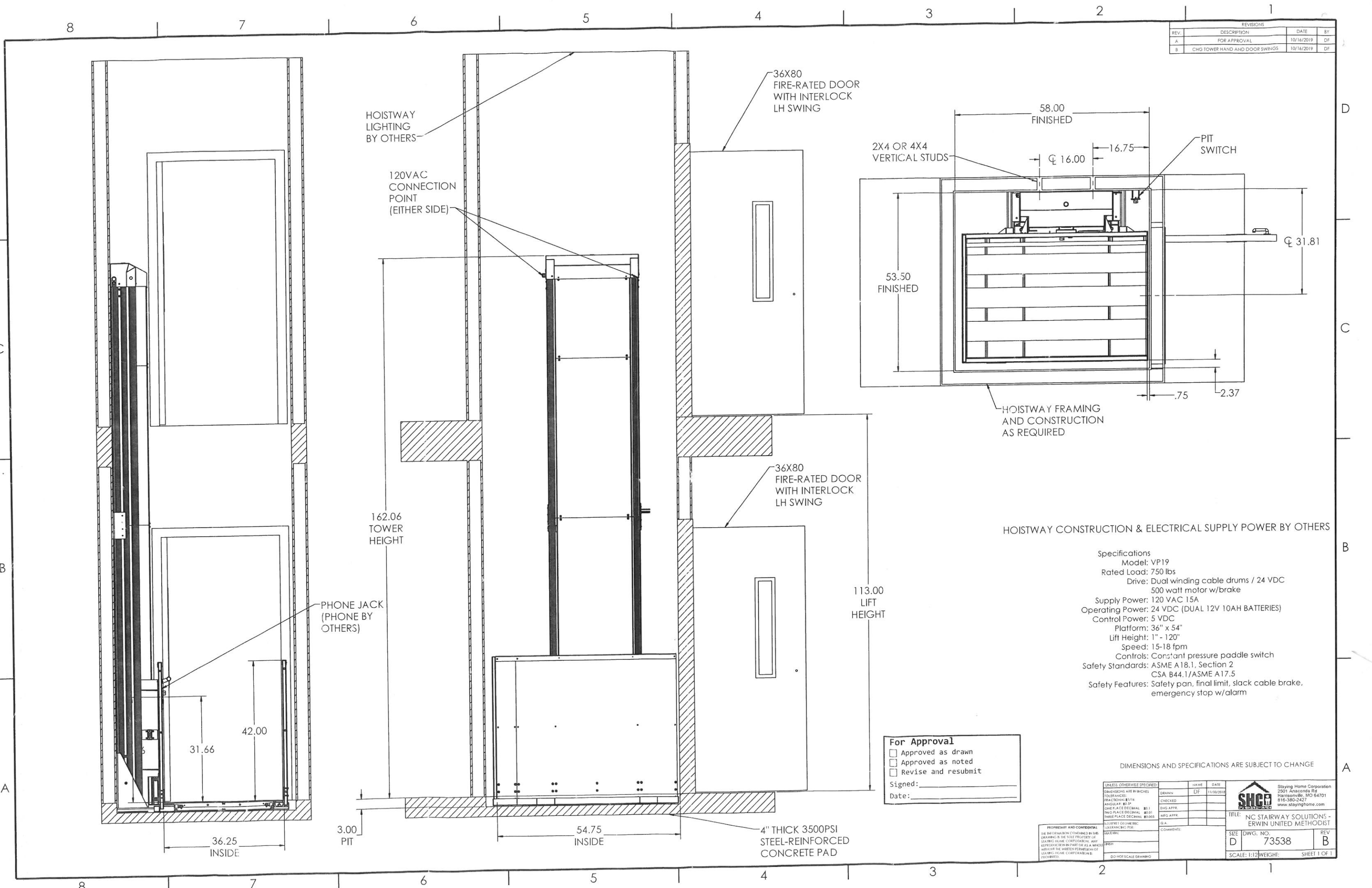
8" CMU

#4 Rebar  
12" O.C. - Each way

10" CONC



REV.	DESCRIPTION	DATE	BY
A	FOR APPROVAL	10/16/2019	DF
B	CHG TOWER HAND AND DOOR SWINGS	10/16/2019	DF



**HOISTWAY CONSTRUCTION & ELECTRICAL SUPPLY POWER BY OTHERS**

- Specifications
- Model: VP19
  - Rated Load: 750 lbs
  - Drive: Dual winding cable drums / 24 VDC 500 watt motor w/brake
  - Supply Power: 120 VAC 15A
  - Operating Power: 24 VDC (DUAL 12V 10AH BATTERIES)
  - Control Power: 5 VDC
  - Platform: 36" x 54"
  - Lift Height: 1" - 120"
  - Speed: 15-18 fpm
  - Controls: Constant pressure paddle switch
  - Safety Standards: ASME A 18.1, Section 2  
CSA B44.1/ASME A 17.5
  - Safety Features: Safety pan, final limit, slack cable brake, emergency stop w/alarm

**For Approval**

Approved as drawn  
 Approved as noted  
 Revise and resubmit

Signed: \_\_\_\_\_  
Date: \_\_\_\_\_

DIMENSIONS AND SPECIFICATIONS ARE SUBJECT TO CHANGE

UNLESS OTHERWISE SPECIFIED: DIMENSIONS ARE IN INCHES FRACTIONS 2/16 ANGLES 90° ONE PLACE DECIMAL .01 TWO PLACE DECIMAL .001 THREE PLACE DECIMAL .0005	DRAWN	DF	11/10/2019
	CHECKED		
DATE	NAME	DATE	
ENG APPR.			
MFG APPR.			
D.A.			
COMMENTS:			

PROPRIETARY AND CONFIDENTIAL  
THE INFORMATION CONTAINED IN THIS DRAWING IS THE SOLE PROPERTY OF STAYING HOME CORPORATION. ANY REPRODUCTION IN PART OR AS A WHOLE WITHOUT THE WRITTEN PERMISSION OF STAYING HOME CORPORATION IS PROHIBITED.

SCALE: 1:12 WEIGHT: SHEET 1 OF 1

SHCA  
Staying Home Corporation  
2501 Anaconda Rd  
Harrisville, MO 64701  
816-380-2427  
www.stayinghome.com

TITLE: NC STAIRWAY SOLUTIONS - ERWIN UNITED METHODIST

SIZE DWG. NO. REV  
D 73538 B