

2nd Floor
Joist

2x4" walls
3/8" drywall
both sides

4-13
INSULATION

Floor Joists

4" CONC

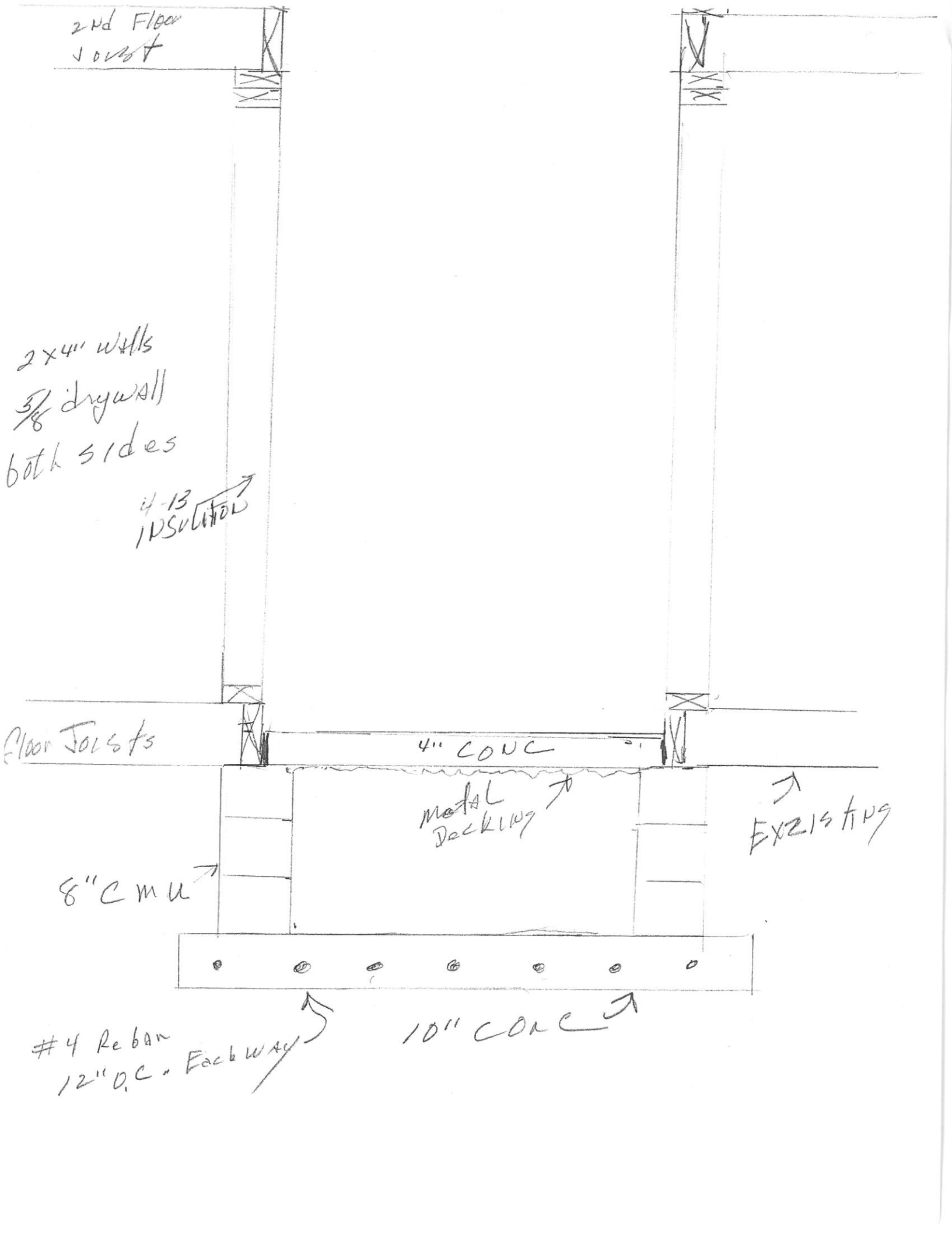
metal
Decking

EXISTING

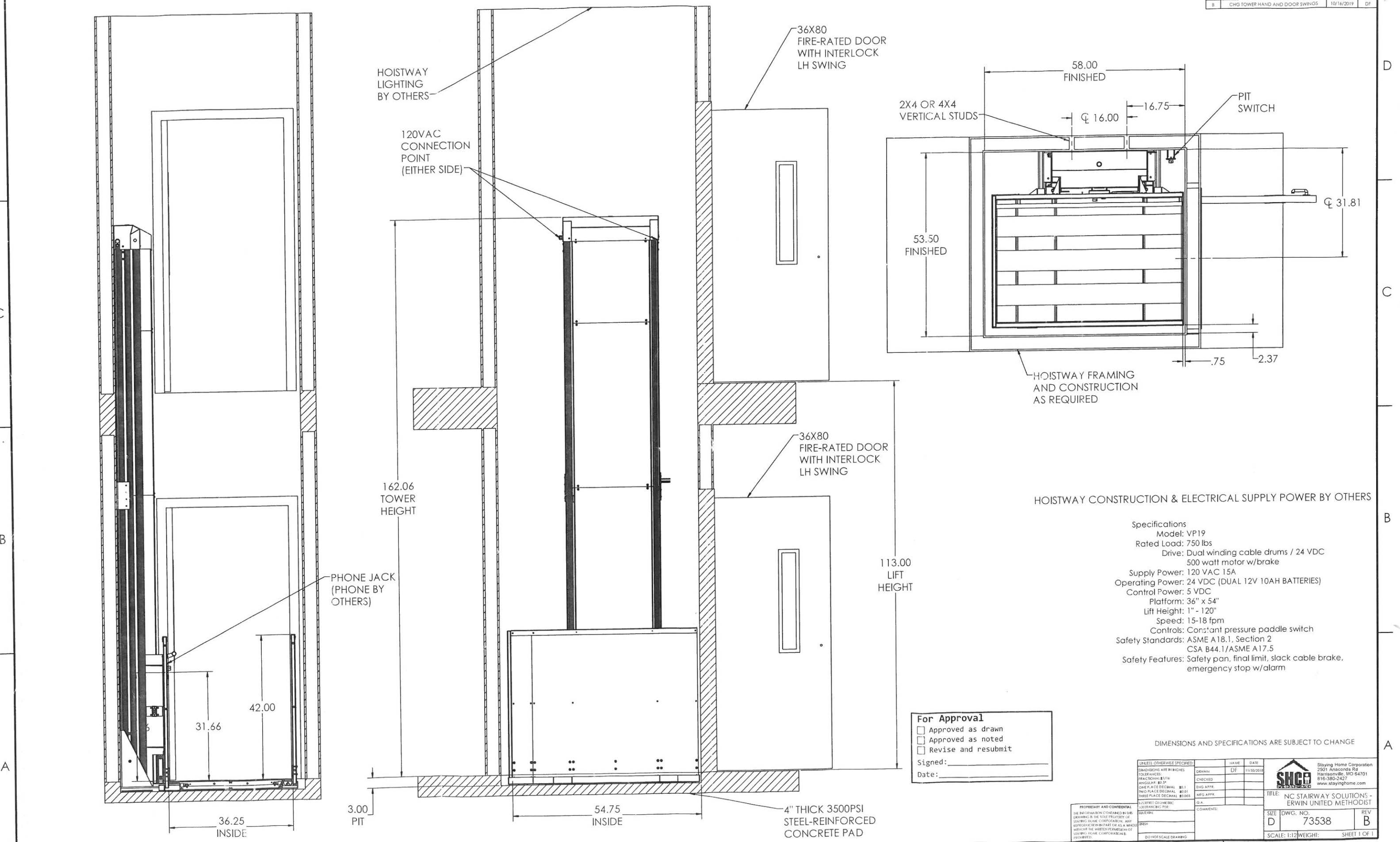
8" CMU

#4 Rebar
12" O.C. Each way

10" CONC



REV.	DESCRIPTION	DATE	BY
A	FOR APPROVAL	10/16/2019	DF
B	CHG TOWER HAND AND DOOR SWINGS	10/16/2019	DF



HOISTWAY CONSTRUCTION & ELECTRICAL SUPPLY POWER BY OTHERS

- Specifications
- Model: VP19
 - Rated Load: 750 lbs
 - Drive: Dual winding cable drums / 24 VDC 500 watt motor w/brake
 - Supply Power: 120 VAC 15A
 - Operating Power: 24 VDC (DUAL 12V 10AH BATTERIES)
 - Control Power: 5 VDC
 - Platform: 36" x 54"
 - Lift Height: 1" - 120"
 - Speed: 15-18 fpm
 - Controls: Constant pressure paddle switch
 - Safety Standards: ASME A18.1, Section 2
CSA B44.1/ASME A17.5
 - Safety Features: Safety pan, final limit, slack cable brake, emergency stop w/alarm

For Approval

Approved as drawn

Approved as noted

Revise and resubmit

Signed: _____

Date: _____

DIMENSIONS AND SPECIFICATIONS ARE SUBJECT TO CHANGE

PROPRIETARY AND CONFIDENTIAL
THE INFORMATION CONTAINED IN THIS DRAWING IS THE SOLE PROPERTY OF STAYING HOME CORPORATION. ANY REPRODUCTION IN PART OR AS A WHOLE WITHOUT THE WRITTEN PERMISSION OF STAYING HOME CORPORATION IS PROHIBITED.

UNLESS OTHERWISE SPECIFIED:	DATE	NAME
DRAWN	DF	11/30/2019
CHECKED		
ENG APPR.		
MFG APPR.		
D.A.		
COMMENTS:		

TITLE: NC STAIRWAY SOLUTIONS - ERWIN UNITED METHODIST
 SIZE: D DWG. NO.: 73538 REV: B
 SCALE: 1:12 WEIGHT: SHEET 1 OF 1

EXISTING CEILING
2-layers 5/8 drywall →

9' →

EXISTING 2ND FLOOR

10' →

54" x 58"
HOISTWAY

EXISTING 1ST FLOOR

4" CONC



2x4 wall →
5/8 drywall
Each side
EXT 2nd Floor Joist

2nd 6/1000 Joist

HOIST way
Protected by
EXISTING MONITORED
Fire Alarm system

2x4 walls
5/8 drywall →
Each side
R-15 INSULATION →

1-hr Rated
Wall

Shaft side must have
2 layers 5/8 drywall to
be one hour.

EXT 1st
Floor Joists

1st Floor
Joist

4" CONC

metal
Decking →

EXISTING →

8" CMU →

#4 Rebar
12" O.C. Each way →

10" CONC →

EXISTING
Grade →