

CHARLES RAMBEAU & OTHERS
C/O JAMES RAMBEAU
PLAT CAB. #2, SLIDE 10

OLD ROAD BED
(APPROX. LOCATION)

IPS AT BASE OF
CHOPPED TREE
S 88°35'32"E 264.42' EIP
N 70°20'50"E 402.23' EIP

DANIEL J. WALL
D.B. 2338 PG. 681
MAP #99 PG. 479

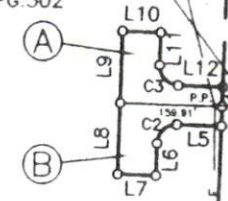
N 77°38'55"E
C/L CREEK
(APPROX. LOCATION)

SHEFFIELDS
BRANCH
(APPROX. LOCATION)

CHALYBEATTE STORE C/O
BETT S. LEWIS
D.B. 1082 PG. 797

PROPOSED 60' STREET
(UNDEVELOPED)

MICHAEL R. RHODES &
ANGELA W. RHODES
D.B. 2054 PG. 838
B.O.M. 2005 PG. 267
MAP BOOK 2 PG. 99
D.B. 169 PG. 502



BROWN ST.

(60' PUBLIC R/W)

U.S. HWY. 401 N (60' PUBLIC R/W)

WILLIAM McLEOD
D.B. 2378 PG. 254

GENERAL DAVID McLEOD
D.B. 1183 PG. 433

ELAINE P. ALLEN
D.B. 868 PG. 296
FELIX BETHEA

BETTS STREET
(UNOPENED)

V. FAY SENTER &
OTHERS
MAP #2001
PG. 169

SENER STREET
(UNOPENED)

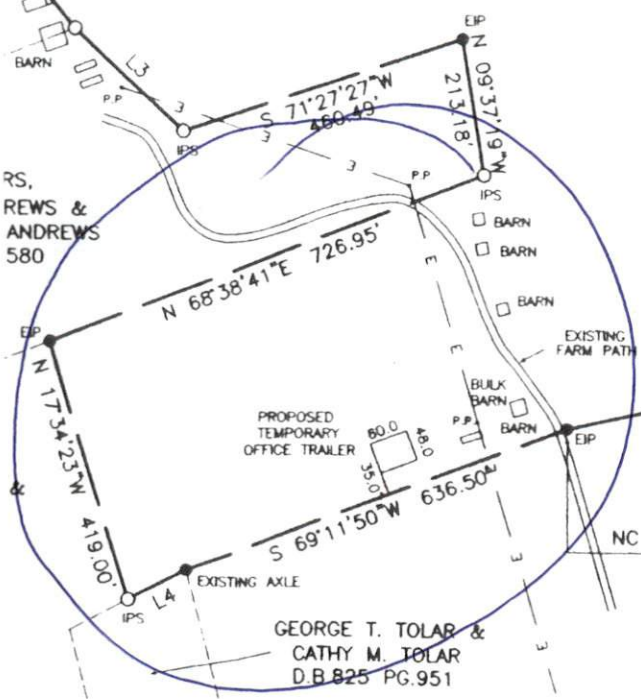
JERRY C. SEARS
& SUE A. SEARS
D.B. 1490 PG. 825
MAP #2001
PG. 169

FRANKLIN STREET
(80' PUBLIC R/W)
MAP #2005 PG. 663

WRS ASSOCIATES, LLC
D.B. 2422 PG. 436

AREA=
95.614 ACRES

2.3 SHELTER
ENCROACHMENT
5.1' BARN
ENCROACHMENT
3.2 SHELTER
ENCROACHMENT



RS,
REWS &
ANDREWS
580

PROPOSED
TEMPORARY
OFFICE TRAILER

GEORGE T. TOLAR &
CATHY M. TOLAR
D.B. 825 PG. 951

S 77°39'37"W 785.21'
N 05°14'43"W 144.44'

NC GRID COORDINATES (NAD 83)
N = 640,479.602
E = 2,064,061.935

WILLIAM D. SMITH
D.B. 511 PG. 86

OWNERS:
BROWN STREET ASSOCIATES, L.L.C.
7610-200 SIX FORKS ROAD
RALEIGH, N.C. 27615

IN HEREON IS SUBJECT TO
RD AFFECTING SAME.
AS BEEN PERFORMED BY THIS
E OF THIS SURVEY.
S NOT CERTIFY TO THE
NCE OF ANY UNDER
LAY OR MAY NOT BE