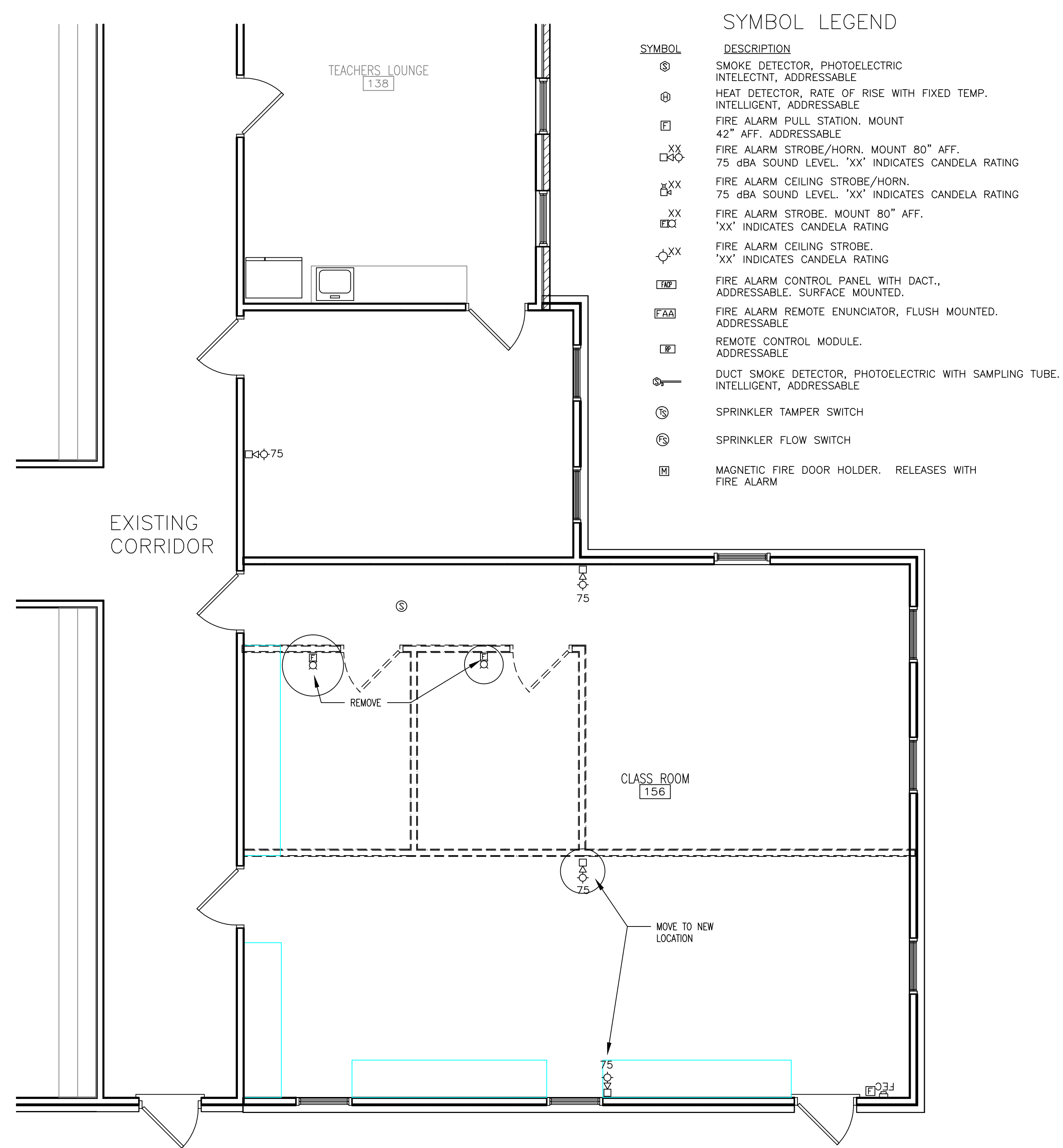
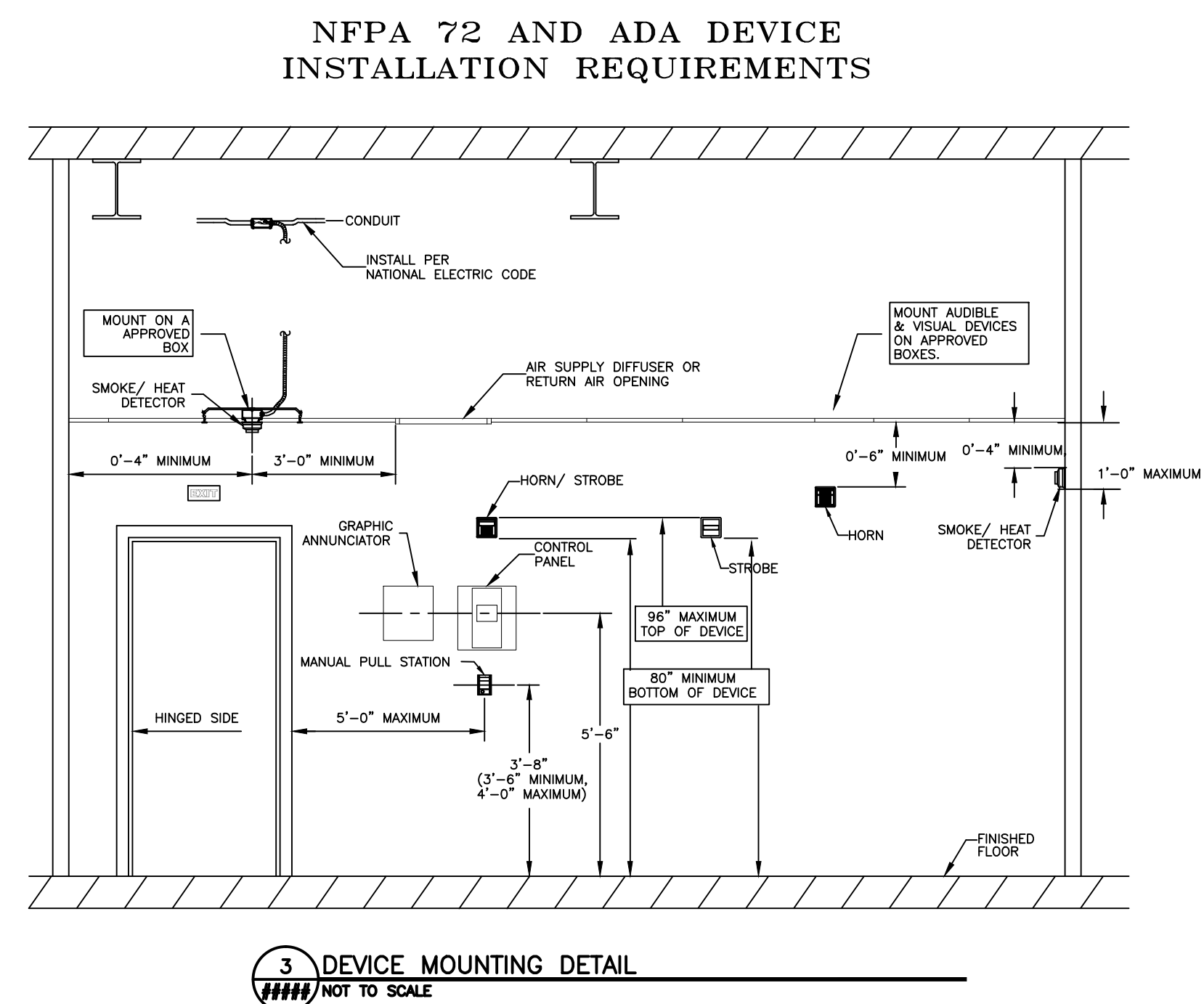


- KEYNOTES:**
- 1 ADDRESSABLE FIRE ALARM PANEL WITH DACT. PROVIDE ADDITIONAL "SNAC" PANEL AS REQUIRED
  - 2 NOT USED
  - 3 REMOTE ANNUNCIATOR CIRCUIT IN CONDUIT
  - 4 24V ELEVATOR SHUNT TRIP CIRCUIT
  - 5 NOT USED
  - 6 TO AHU SHUT DOWN
  - 7 PROVIDE 2 PHONE LINES IN CONDUIT TO COMMUNICATIONS BOARD
  - 8 PROVIDE ISOLATION MODULE AS REQUIRED
  - 9 NOT USED



**SYMBOL LEGEND**

SYMBOL	DESCRIPTION
⊙	SMOKE DETECTOR, PHOTOELECTRIC INTELECTNT, ADDRESSABLE
⊕	HEAT DETECTOR, RATE OF RISE WITH FIXED TEMP. INTELLIGENT, ADDRESSABLE
⊞	FIRE ALARM PULL STATION. MOUNT 42" AFF. ADDRESSABLE
⊞XX	FIRE ALARM STROBE/HORN. MOUNT 80" AFF. 75 dBA SOUND LEVEL. "XX" INDICATES CANDELA RATING
⊞XX	FIRE ALARM CEILING STROBE/HORN. 75 dBA SOUND LEVEL. "XX" INDICATES CANDELA RATING
⊞XX	FIRE ALARM STROBE. MOUNT 80" AFF. "XX" INDICATES CANDELA RATING
⊞XX	FIRE ALARM CEILING STROBE. "XX" INDICATES CANDELA RATING
⊞P	FIRE ALARM CONTROL PANEL WITH DACT., ADDRESSABLE. SURFACE MOUNTED.
⊞FAA	FIRE ALARM REMOTE ENUNCIATOR, FLUSH MOUNTED. ADDRESSABLE
⊞R	REMOTE CONTROL MODULE. ADDRESSABLE
⊞S	DUCT SMOKE DETECTOR, PHOTOELECTRIC WITH SAMPLING TUBE. INTELLIGENT, ADDRESSABLE
⊞	SPRINKLER TAMPER SWITCH
⊞	SPRINKLER FLOW SWITCH
⊞	MAGNETIC FIRE DOOR HOLDER. RELEASES WITH FIRE ALARM

**David Miller, PE**  
ENGINEERING AND DESIGN  
6300 CREEKMOOR ROAD, STE 170 #263  
RALEIGH, N.C. 27612  
TEL: 919-422-8932 FAX: 919-422-8932

REVISIONS	DATE	BY	DESCRIPTION

PROJECT NO.: 19DDM0716  
DATE: 7/17/2019  
DRAWN BY: DCW  
CHECKED BY: DM

**Anderson Creek remodeling  
FIRE ALARM  
RAY ROAD, ANDERSON CREEK NC**

SHEET NUMBER  
**FA101**  
X of X SHEETS

