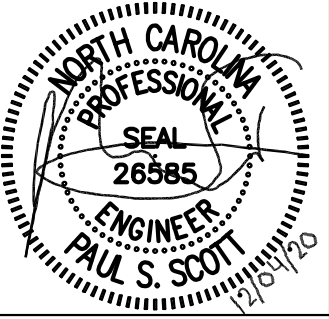
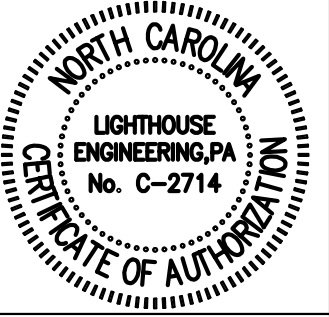


---	WALL LEGEND: (SEE ARCH. PLANS FOR INFO)
---	1-HR FIRE RATED PARTITION
---	1-HR FIRE RATED SMOKE BARRIER
---	SMOKE PARTITION

REVISIONS
 Δ DHHS COMMENTS 11/23/20
 Δ DHHS COMMENTS 12/04/20



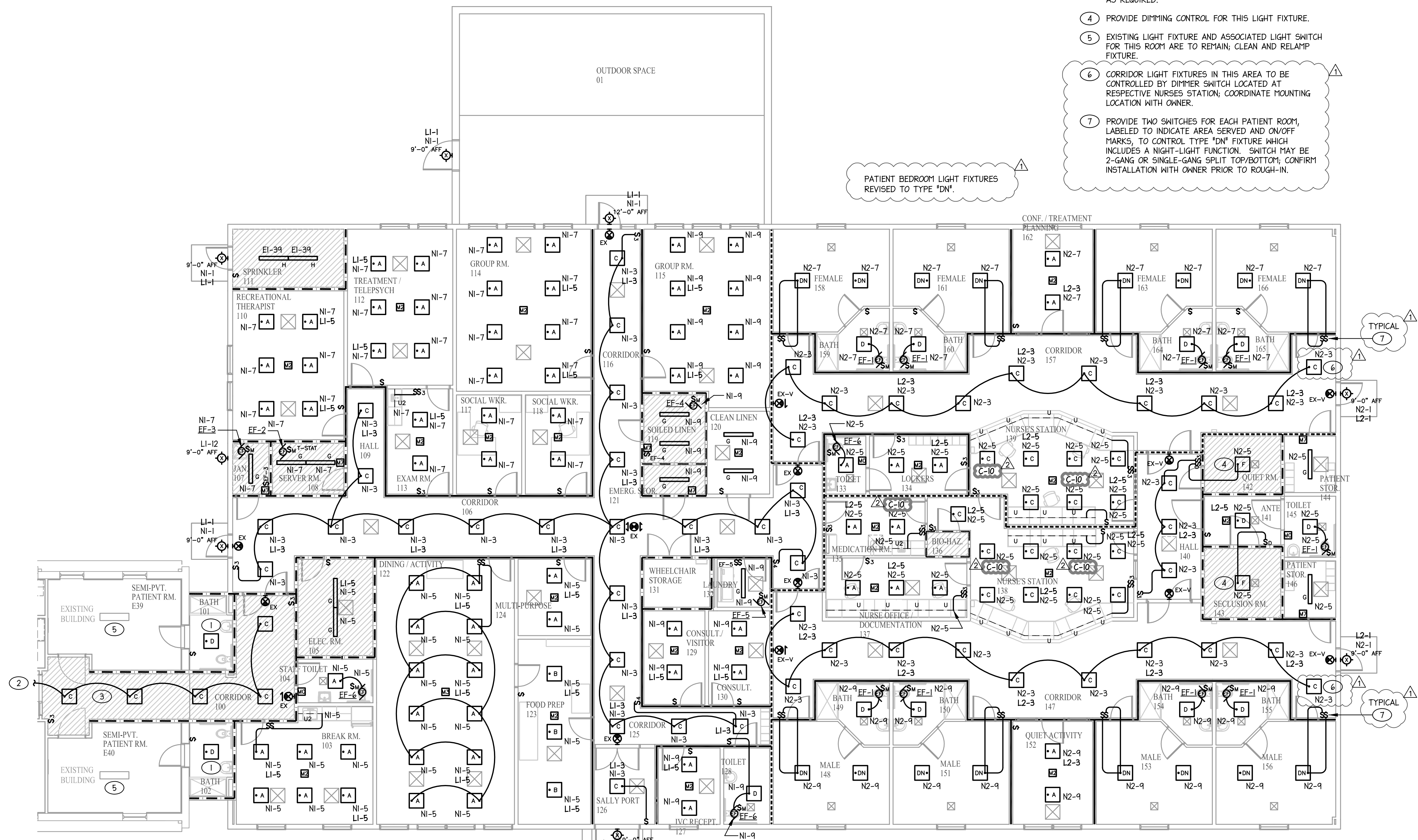
LEGEND	
	1-HR FIRE RATED CEILING

GENERAL NOTES:

- GTD TRANSFER DEVICE SHALL BE PROVIDED FOR EACH FIXTURE WHERE AN EMERGENCY CIRCUIT "Lx-x" IS SHOWN; SEE LIGHTING FIXTURE SCHEDULE FOR FURTHER INFORMATION.
- CONFIRM LOCATIONS AND CONTROL OF ALL EXHAUST FANS WITH M.C. PRIOR TO BEGINNING WORK.

TAGGED NOTES:

- CIRCUIT NEW BATHROOM LIGHT AND RELOCATED EXHAUST FAN TO EXISTING PATIENT ROOM 120V LIGHTING CIRCUIT; CONFIRM CIRCUIT LOAD IS LESS THAN 1500W.
- CIRCUIT TO NEAREST EXISTING CORRIDOR 120V LIGHTING CIRCUIT; CONFIRM CIRCUIT LOAD IS LESS THAN 1500W.
- E.C. TO FIELD VERIFY EXISTING EMERGENCY EGRESS LIGHTING, PROVIDED UNDER PREVIOUS PERMIT, IS ADEQUATE AND FULLY OPERATIONAL IN THIS AREA; PROVIDE AS NEEDED. CLEAN AND RELAMP FIXTURES AS REQUIRED.
- PROVIDE DIMMING CONTROL FOR THIS LIGHT FIXTURE.
- EXISTING LIGHT FIXTURE AND ASSOCIATED LIGHT SWITCH FOR THIS ROOM ARE TO REMAIN; CLEAN AND RELAMP FIXTURE.
- CORRIDOR LIGHT FIXTURES IN THIS AREA TO BE CONTROLLED BY DIMMER SWITCH LOCATED AT RESPECTIVE NURSES STATION; COORDINATE MOUNTING LOCATION WITH OWNER.
- PROVIDE TWO SWITCHES FOR EACH PATIENT ROOM, LABELED TO INDICATE AREA SERVED AND ON/OFF MARKS; TO CONTROL TYPE "DN" FIXTURE WHICH INCLUDES A NIGHT-LIGHT FUNCTION. SWITCH MAY BE 2-GANG OR SINGLE-GANG SPLIT TOP/BOTTOM; CONFIRM INSTALLATION WITH OWNER PRIOR TO ROUGH-IN.



PATIENT BEDROOM LIGHT FIXTURES REVISED TO TYPE "DN".

PATIENT BEDROOM LIGHT FIXTURES REVISED TO TYPE "DN".

1 ELECTRICAL LIGHTING - FLOOR PLAN
 1/8"=1'-0"

Stogner Architecture, PA
 ARCHITECTURE - CONSTRUCTION MANAGEMENT - DESIGN BUILD
 615 East Broad Avenue, Rockingham, North Carolina, 28379
 Phone 910-895-6874 Fax 910-895-1111

GOOD HOPE HOSPITAL
 ADDITION and RENOVATIONS
 410 DENIM DRIVE
 ERWIN, NORTH CAROLINA

ELECTRICAL LIGHTING - FLOOR PLAN

COMM. NO.: 4535
 DRAWN BY: JRS
 CHECKED BY: PSS
 DATE: SEPT 11, 2020
 SHEET NO. E1.2

A
B
C
D