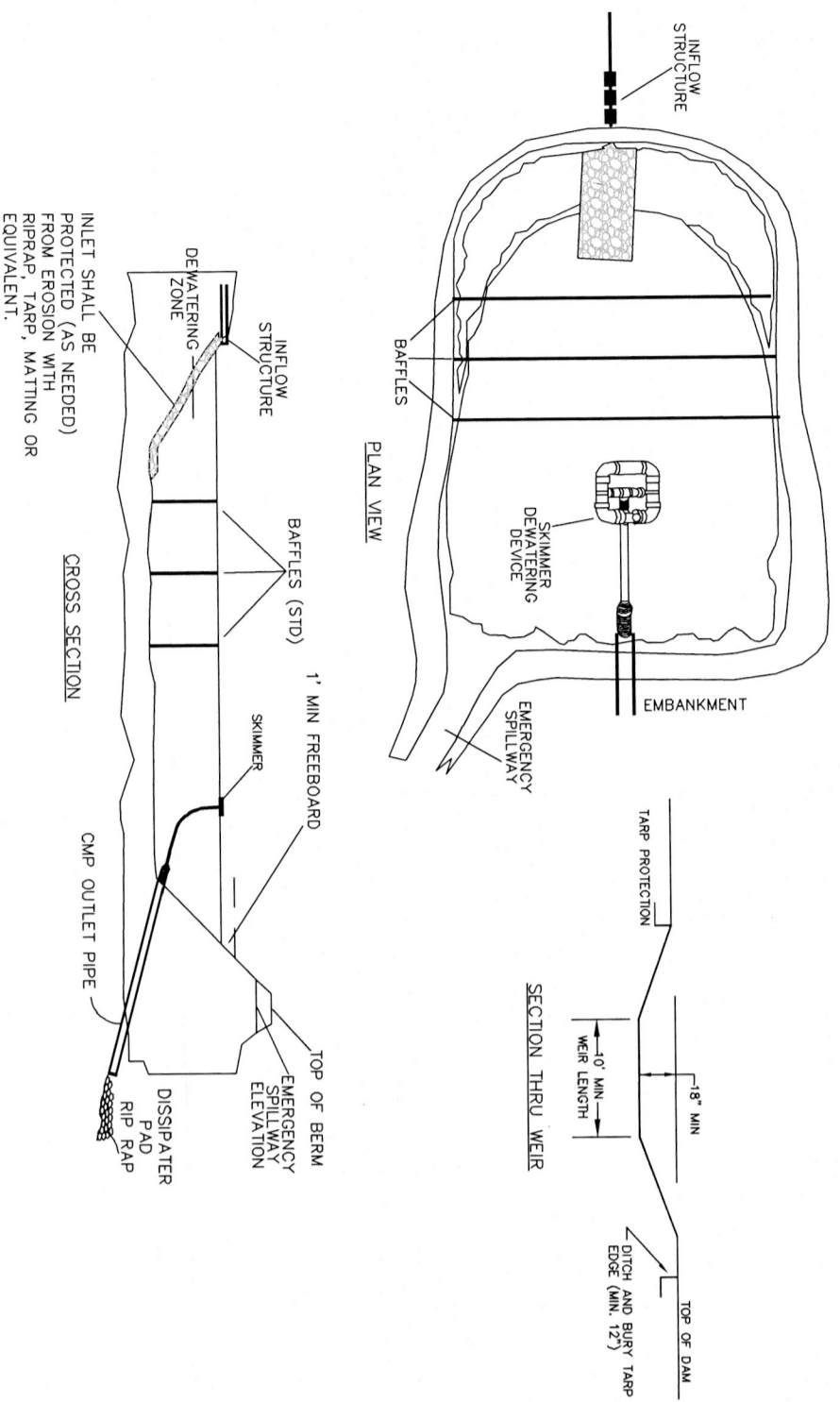


SKIMMER



- NOTES:
- 1) BASKET SHOULD BE CLEANED OUT WITH GARDOL® REGULAR OR ELECTRON DEGREASING. THE TOP GRATE IS PROVIDED TO ALLOW FOR EASY ACCESS TO THE BASKET. THE BASKET SHOULD BE CLEANED AT LEAST ONCE PER WEEK.
  - 2) TO MAINTAIN STABILITY OF BASKET, WATER MAIN TO BE USED. THE WATER MAIN IS LOCATED AT 112.5' ELEVATION. PROVIDE 1\"/>
  - 3) BASKET MATERIAL MUST BE SCHEDULE 40 PIPE. PROVIDE 1\"/>
  - 4) BASKET MUST BE SECURED AT THE BOTTOM AND TOP OF BASKET WITH 1\"/>
  - 5) PROVIDE THE CONNECTION PIPE OF THE INLET FROM SKIMMER TO MAIN WATER MAIN. PROVIDE FROM THE TOP OF BASKET TO THE MAIN WATER MAIN.

SKIMMER BASIN

**Maintenance**

Inspect baffles at least once a week and after each rainfall. Make any required repairs immediately.

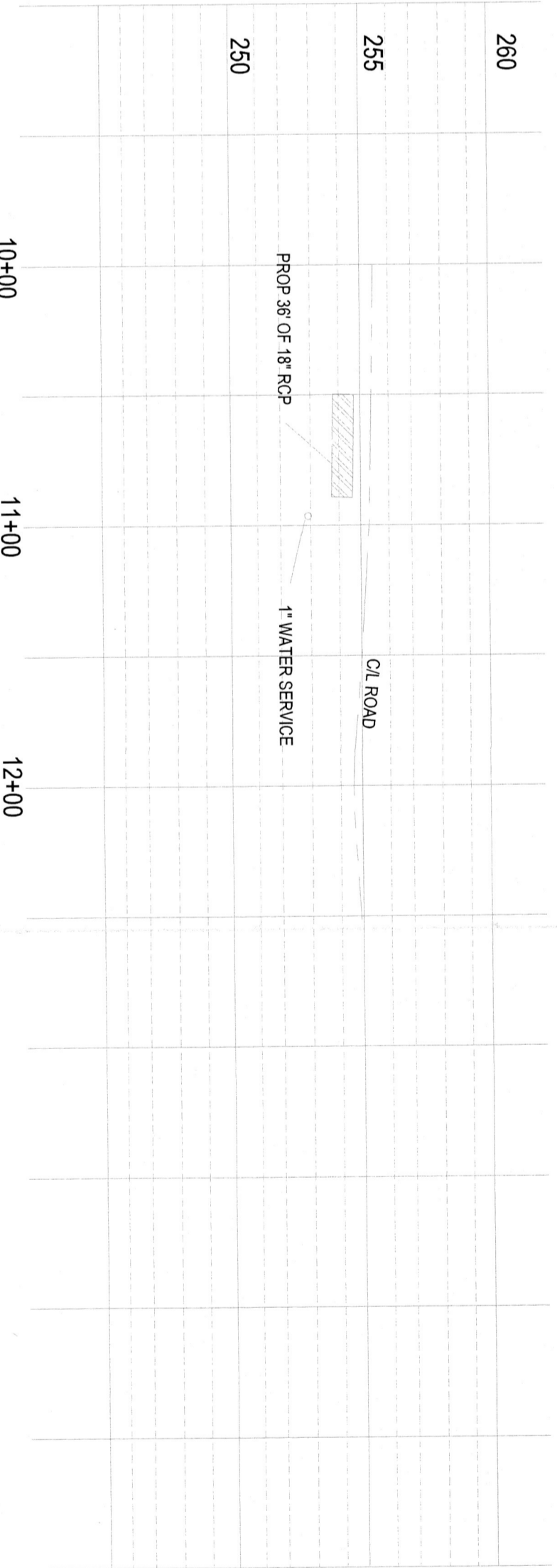
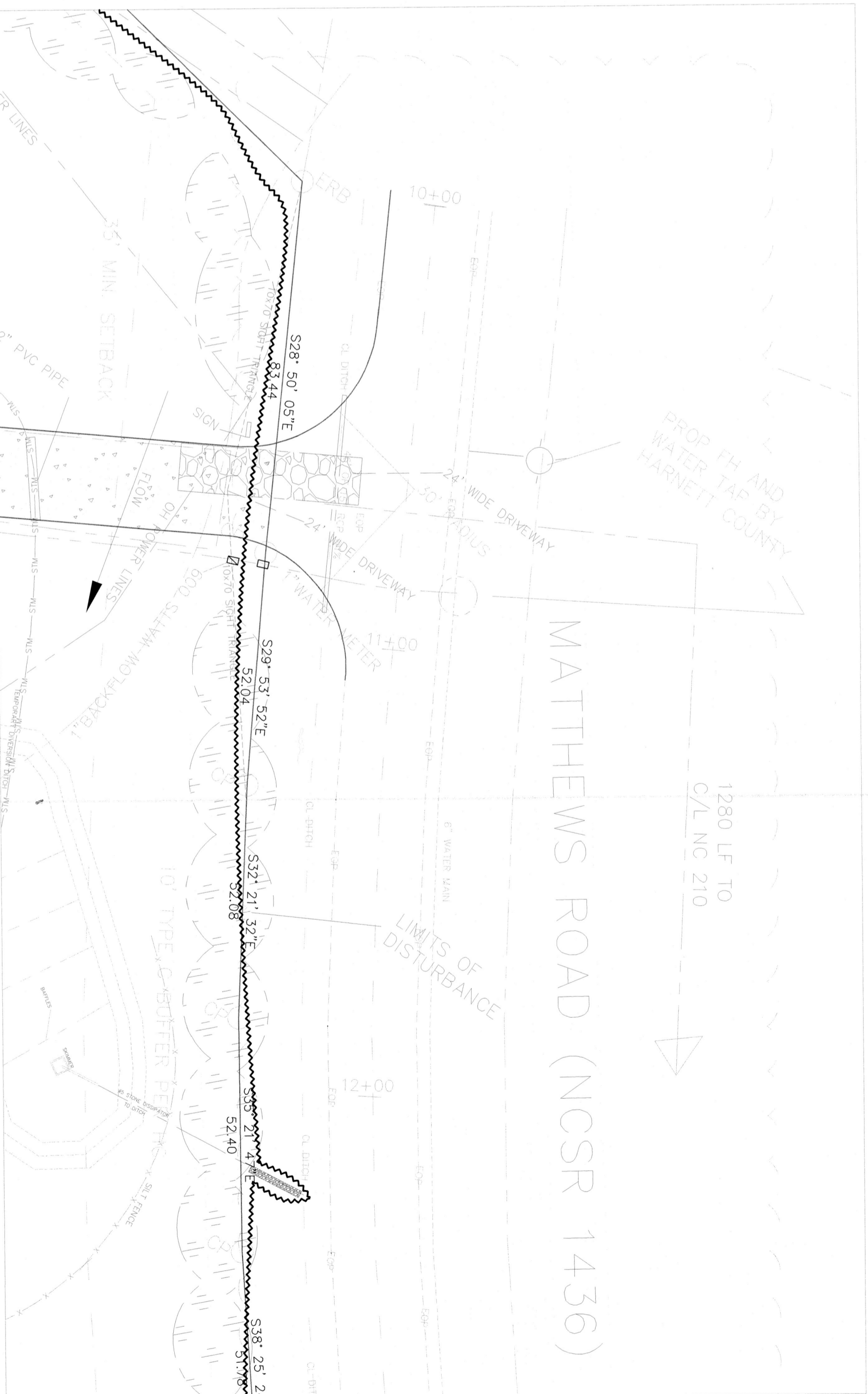
Be sure to maintain access to the baffles. Should the debris of a baffle collapse, remove sediment debris when it reaches half full. An periodic adjustment of the float valve is required to maintain proper water level and to reduce pressure on the baffles. Take care to avoid damaging the baffles during cleanup, and replace if damaged during cleanup operations. Skimmer design should never exceed full the design flow rate.

After the cleaning and debris are removed, the skimmer should be checked, cleaned, and adjusted. The skimmer should be checked and adjusted after the next rain to ensure proper operation.

**References**

- Sediment Trap and Receiver
- 6.61. Sediment Basin
- 6.64. Skimmer Sediment Basin
- Mid-Atlantic, Richard, "Soil Erosion: Baffles to Improve Sediment Basins," N.C. State University Cooperative Extension Service Fact Sheet AGW-439.91, 2005.
- North Carolina Department of Transportation Erosion and Sedimentation Control Special Provisions
- Sullivan, Brian, City of High Point Erosion Control Specifications.
- Thames, C., S. J. Coleman, and R. A. Madenjian, 2004. Hydrodynamic assessment of various types of baffles in a sediment detention pond. Transactions of the ASAE, Vol. 47(3): 741-749.

**MAINTENANCE FOR SKIMMER BASIN**



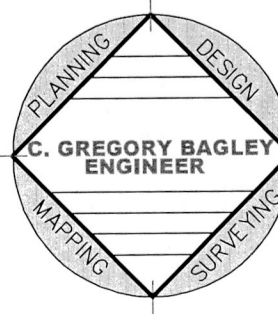
**PLAN/PROFILE AT DRIVEWAY**

HOR: 1"=20'  
VERT: 1"=5'

REVISIONS	
No.	Remarks
1	
2	
3	
4	



C. Gregory Bagley, Engineer  
805 Cokesbury Road  
Fuquay Varina, N.C. 27526  
Office: (919)609-0300  
GMAIL: GDB.GREG@GMAIL.COM



**S&E 2 DETAILS**

Client Name: **GREATER LIGHT BAPTIST CHURCH**  
For **BRETT MATTHEWS**  
Harnett County N.C.

Sheet Number  
**S&E 2**  
of 1