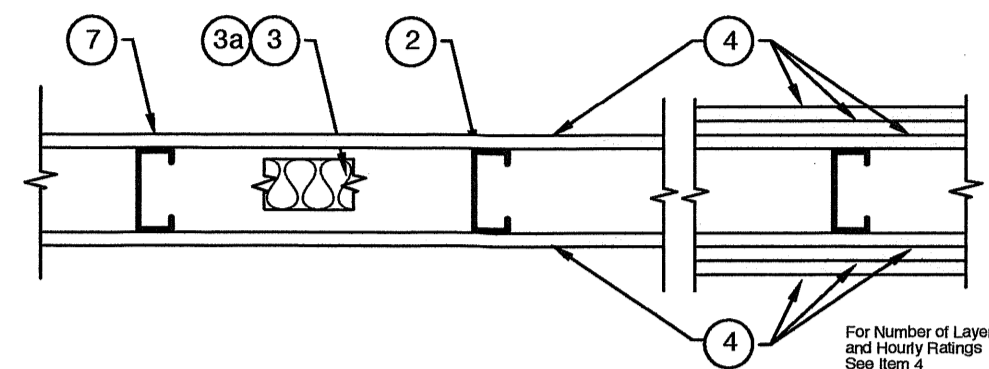


Design No. U419
Nonbearing Wall Ratings 1, 2, 3 or 4 Hr
(See Items 3 & 4)



1. Floor and Ceiling Runners — (Not shown) — Channel shaped, fabricated from min 25 MSG (min 20 MSG when Item 4A is used) corrosion-protected steel, min width to accommodate stud size, with min 1 in. long legs, attached to floor and ceiling with fasteners 24 in. OC max.
2. Steel Studs — Channel shaped, fabricated from min 25 MSG (min 20 MSG when Item 4A is used) corrosion-protected steel, min width as indicated under Item 4, min 1-1/4 in. flanges and 1/4 in. return, spaced a max of 24 in. OC. Studs to be cut 3/8 to 3/4 in. less than assembly height.
3. Batts and Blankets* — (Required as indicated under Item 4) — Mineral wool batts, friction fitted between studs and runners. Min nom thickness as indicated under Item 4. See Batts and Blankets (BKNV or BZJZ) Categories for names of Classified companies.
- 3A. Batts and Blankets* — (Optional) — Placed in stud cavities, any glass fiber or mineral wool insulation bearing the UL Classification Marking as to Surface Burning Characteristics and/or Fire Resistance. See Batts and Blankets (BKNV or BZJZ) Categories for names of Classified companies.
4. Gypsum Board* — Gypsum panels with beveled, square or tapered edges, applied vertically or horizontally. Vertical joints centered over studs and staggered one stud cavity on opposite sides of studs. Vertical joints in adjacent layers (multilayer systems) staggered one stud cavity. Horizontal joints need not be backed by steel framing. Horizontal edge joints and horizontal butt joints on opposite sides of studs need not be staggered. Horizontal edge joints and horizontal butt joints in adjacent layers (multilayer systems) staggered a min of 12 in. The thickness and number of layers for the 1 hr, 2 hr, 3 hr and 4 hr ratings are as follows:

Wallboard Protection on Each Side of Wall

Rating	Min Stud Depth	No. of Layers & Thkns of Panel	Min Thkns of Insulation (Item 3)
1	3-1/2	1 layer, 5/8 in. thick	Optional
1	2-1/2	1 layer, 1/2 in. thick	1-1/2 in.
1	1-5/8	1 layer, 3/4 in. thick	Optional
2	1-5/8	2 layers, 1/2 in. thick	Optional
2	1-5/8	2 layers, 5/8 in. thick	Optional
2	3-1/2	1 layer, 3/4 in. thick	3 in.
3	1-5/8	3 layers, 1/2 in. thick	Optional
3	1-5/8	2 layers, 3/4 in. thick	Optional
3	1-5/8	3 layers, 5/8 in. thick	Optional
4	1-5/8	4 layers, 5/8 in. thick	Optional
4	1-5/8	4 layers, 1/2 in. thick	Optional
4	2-1/2	2 layers, 3/4 in. thick	2 in.

CANADIAN GYPSUM COMPANY — 1/2 in. thick Type C, IP-X2 or IPC-AR; WRC, 5/8 in. thick Type AR, C, IP-AR, IP-X1, IP-X2, IPC-AR, SCX, SHX, WFX, WRC or 3/4 in. thick Type IP-X3, ULTRACODE, ULTRACODE SHC or ULTRACODE WRC.

UNITED STATES GYPSUM CO — 1/2 in. thick Type C, IP-X2, IPC-AR or WRC; 5/8 in. thick Type SCX, SHX, WFX, IP-X1, AR, C, WRC, FRX-S, IP-AR, IP-X2, IPC-AR; 3/4 in. thick Type IP-X3, ULTRACODE, ULTRACODE SHC or ULTRACODE WRC.

USG MEXICO S A DE C V — 1/2 in. thick Type C, IP-X2, IPC-AR or WRC; 5/8 in. thick Type AR, C, IP-AR, IP-X1, IP-X2, IPC-AR, SCX, SHX, WFX, WRC or 3/4 in. thick Type IP-X3, ULTRACODE, ULTRACODE SHC or ULTRACODE WRC.

4A. Gypsum Board* — (As an alternate to Item 4) — 5/8 in. thick gypsum panels, installed as described in Item 4 with Type S-12 steel screws. The length and spacing of the screws as specified under Item 5.

CANADIAN GYPSUM COMPANY — Type FRX

UNITED STATES GYPSUM CO — Type FRX

4B. Gypsum Board* — (As an alternate to Items 4 and 4A) — 5/8 in. thick, 2 ft. wide, tongue and groove edge, applied horizontally as the outer layer to one side of the assembly. Secured as described in Item 5. Joint covering (Item 7) not required.

CANADIAN GYPSUM COMPANY — Type SHX.

UNITED STATES GYPSUM CO — Type SHX.

USG MEXICO S A DE C V — Type SHX.

5. Fasteners — (Not shown) — Type S or S-12 steel screws used to attach panels to studs (Item 2) or furring channels (Item 6). Single layer systems: 1 in. long for 1/2 and 5/8 in. thick panels or 1-1/4 in. long for 3/4 in. thick panels, spaced 8 in. OC when panels are applied horizontally, or 8 in. OC along vertical and bottom edges and 12 in. OC in the field when panels are applied vertically. Two layer systems: First layer- 1 in. long for 1/2 and 5/8 in. thick panels or 1-1/4 in. long for 3/4 in. thick panels, spaced 16 in. OC. Second layer- 1-5/8 in. long for 1/2 in., 5/8 in. thick panels or 2-1/4 in. long for 3/4 in. thick panels, spaced 16 in. OC with screws offset 8 in. from first layer. Three-layer systems: First layer- 1 in. long for 1/2 in., 5/8 in. thick panels, spaced 24 in. OC. Second layer- 1-5/8 in. long for 1/2 in., 5/8 in. thick panels or 2-5/8 in. long for 5/8 in. thick panels, spaced 12 in. OC. Screws offset min 6 in. from layer below. Four-layer systems: First layer- 1 in. long for 1/2 in., 5/8 in. thick panels, spaced 24 in. OC. Second layer- 1-5/8 in. long for 1/2 in., 5/8 in. thick panels, spaced 24 in. OC. Third layer- 2-1/4 in. long for 1/2 in., 5/8 in. thick panels, spaced 24 in. OC. Fourth layer- 2-5/8 in. long for 1/2 in. thick panels or 3 in. long for 5/8 in. thick panels, spaced 12 in. OC. Screws offset min 6 in. from layer below.

6. Furring Channels — (Optional, not shown, for single or double layer systems) — Resilient furring channels fabricated from min 25 MSG corrosion-protected steel, spaced vertically a max of 24 in. OC. Flange portion attached to each intersecting stud with 1/2 in. long Type S-12 steel screws. Not for use with Item 4A.

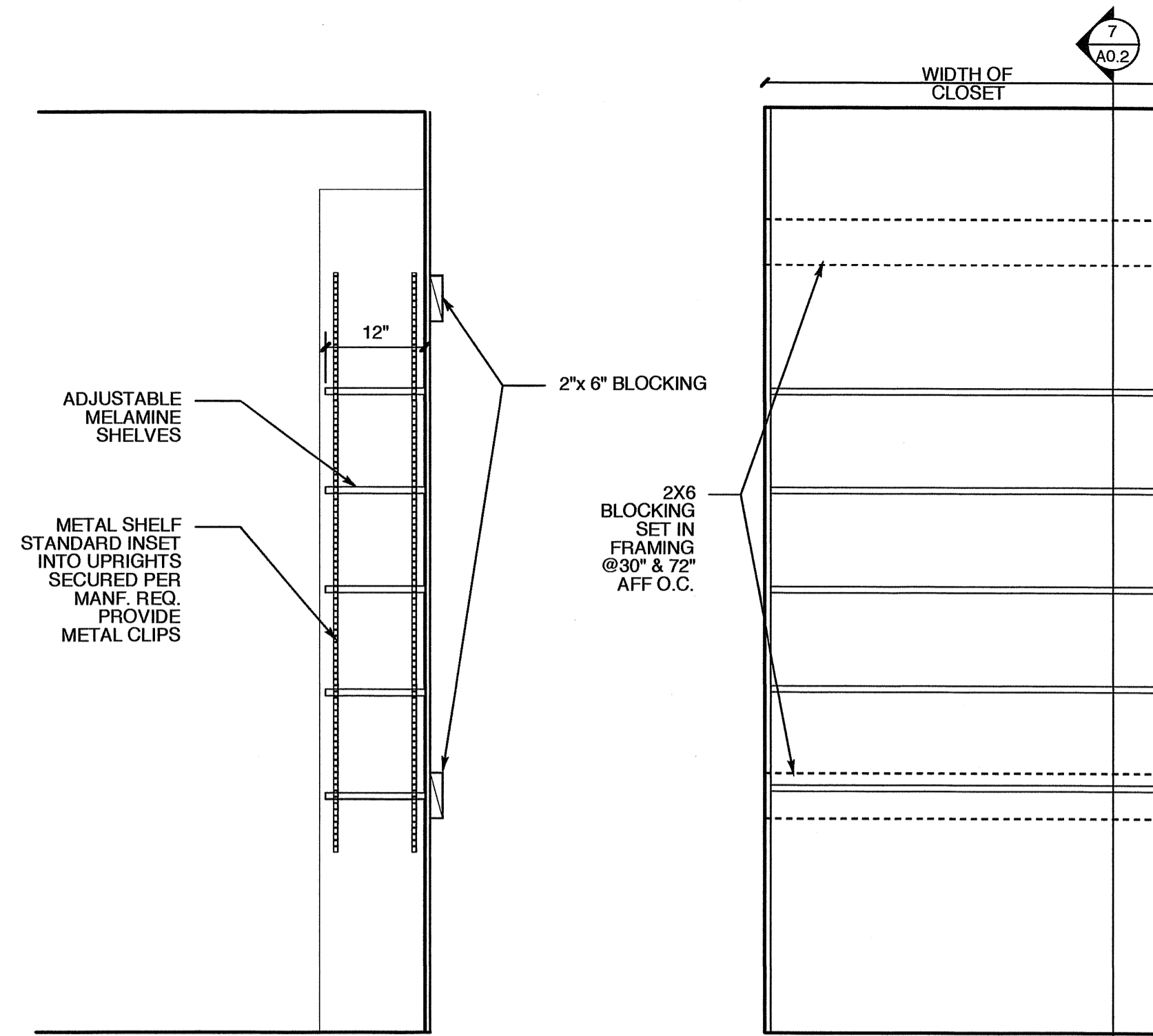
7. Joint Tape and Compound — Vinyl or casein, dry or premixed joint compound applied in two coats to joints and screw heads of outer layers. Paper tape, nom 2 in. wide, embedded in first layer of compound over all joints of outer layer panels. Paper tape and joint compound may be omitted when gypsum panels are supplied with a square edge.

8. Siding, Brick or Stucco — (Optional, not shown) — Aluminum, vinyl or steel siding, brick veneer or stucco, meeting the requirements of local code agencies, installed over gypsum panels. Brick veneer attached to studs with corrugated metal wall ties attached to each stud with steel screws, not more than each sixth course of brick.

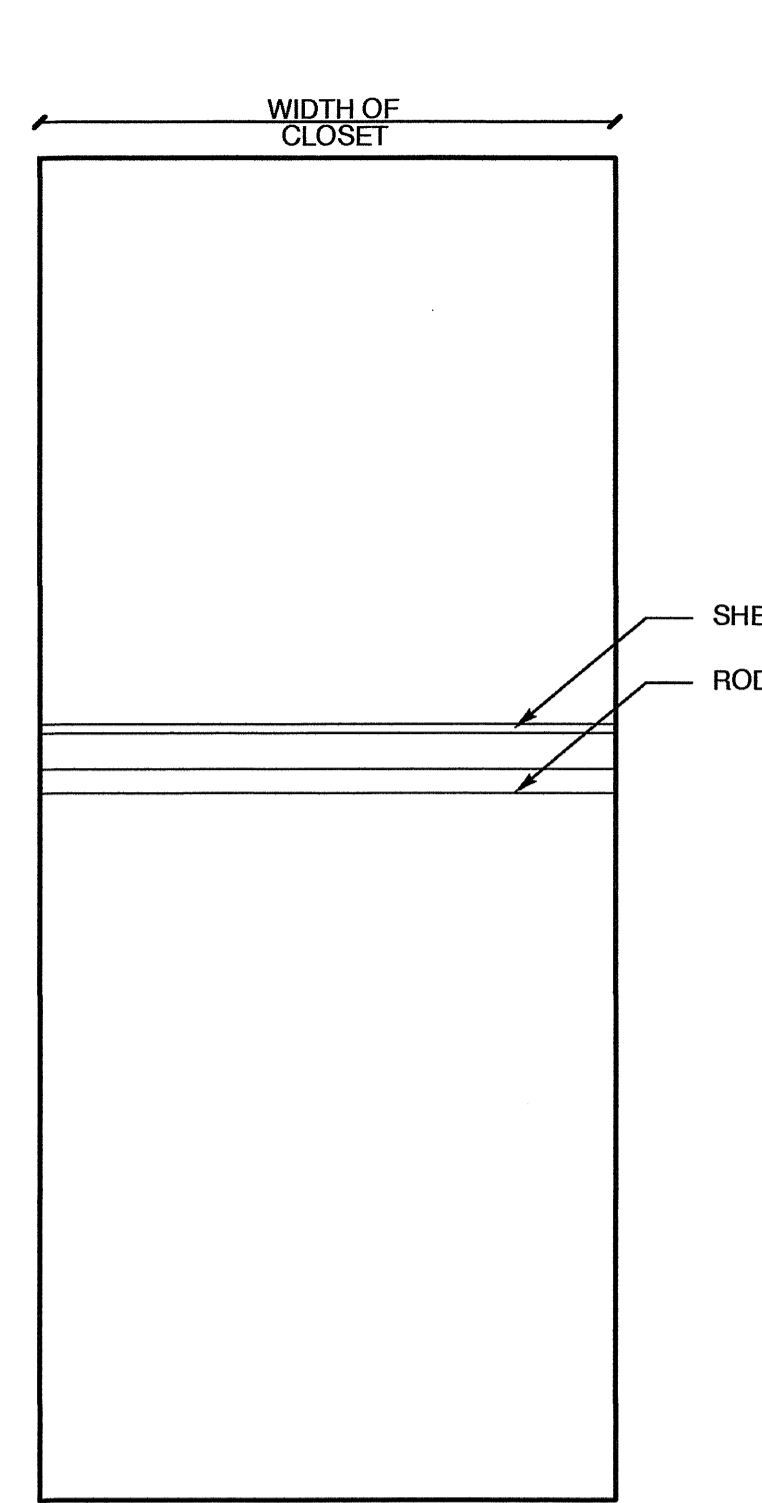
9. Caulking and Sealants* — (Optional, not shown) — A bead of acoustical sealant applied around the partition perimeter for sound control.

UNITED STATES GYPSUM CO — Type AS

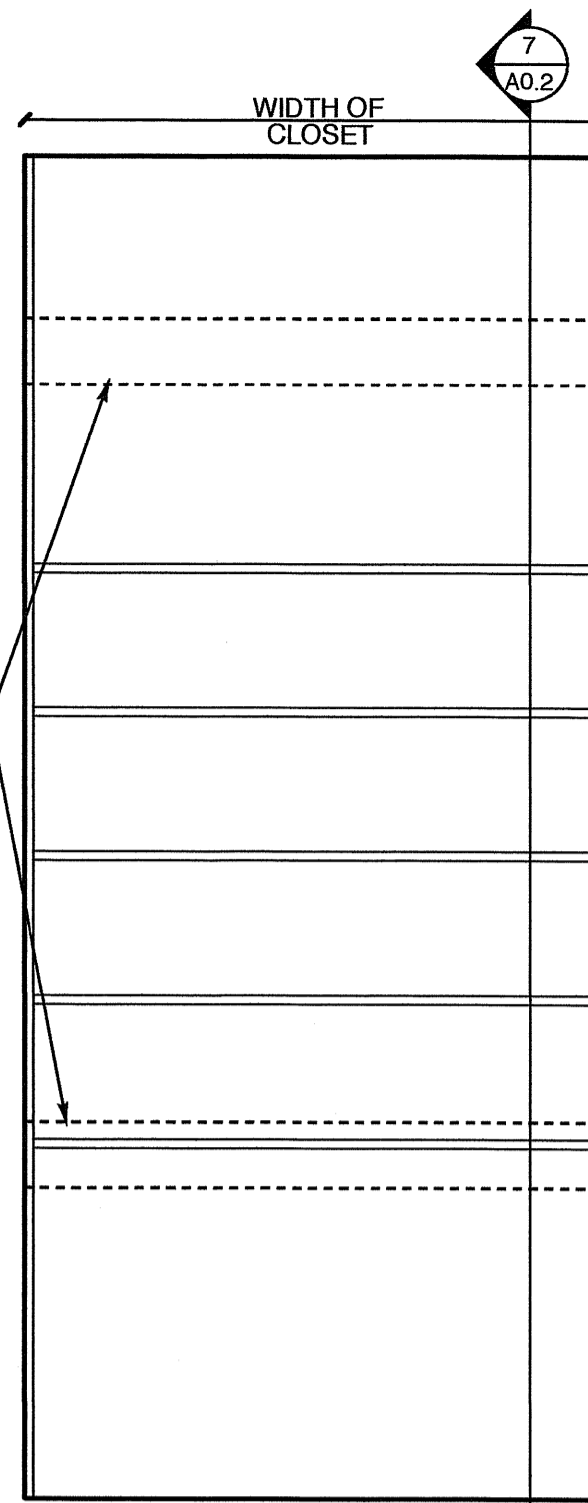
*Bearing the UL Classification Mark



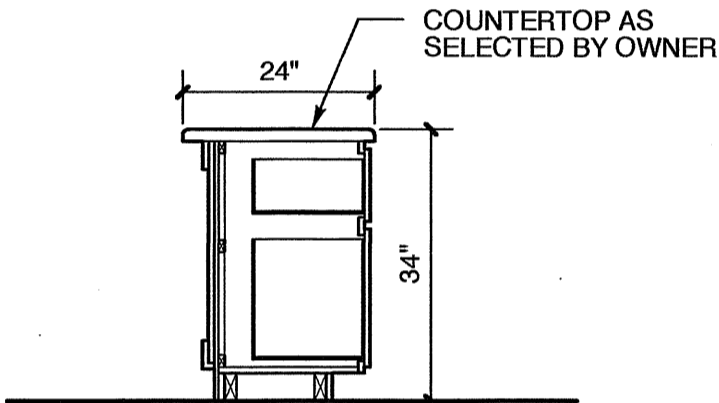
7 SHELVING SECTION
SCALE: 3/4" = 1'-0"



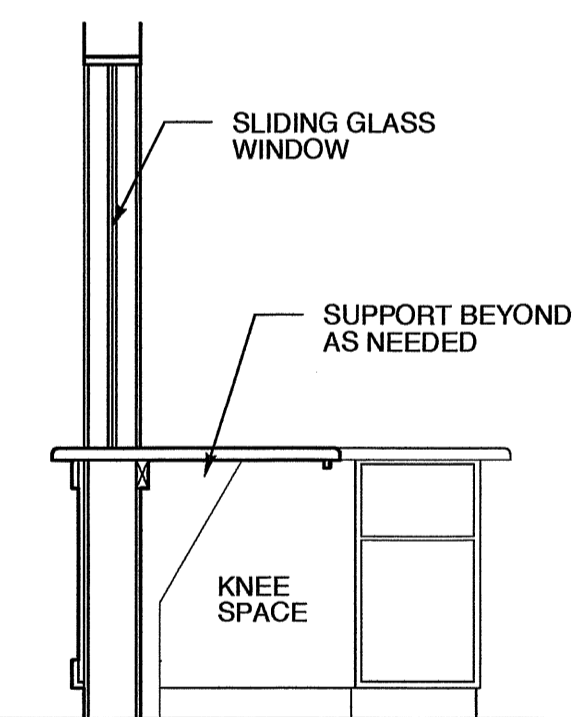
5 ROD ELEV.
SCALE: 3/4" = 1'-0"



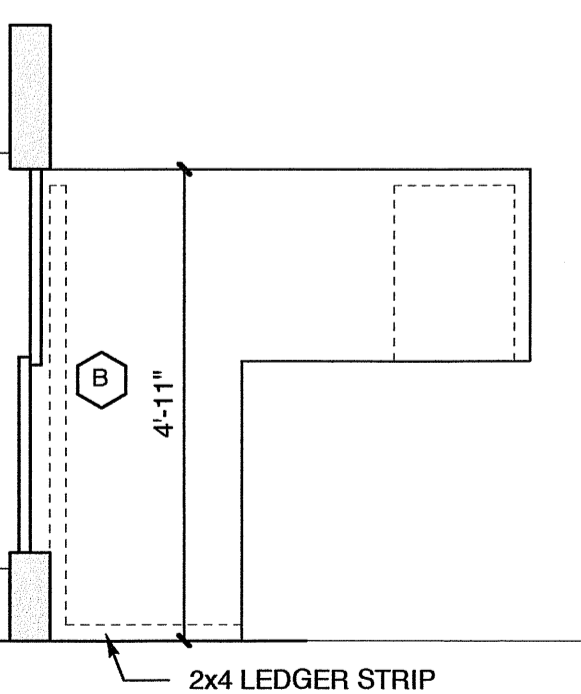
6 SHELVING ELEV.
SCALE: 3/4" = 1'-0"



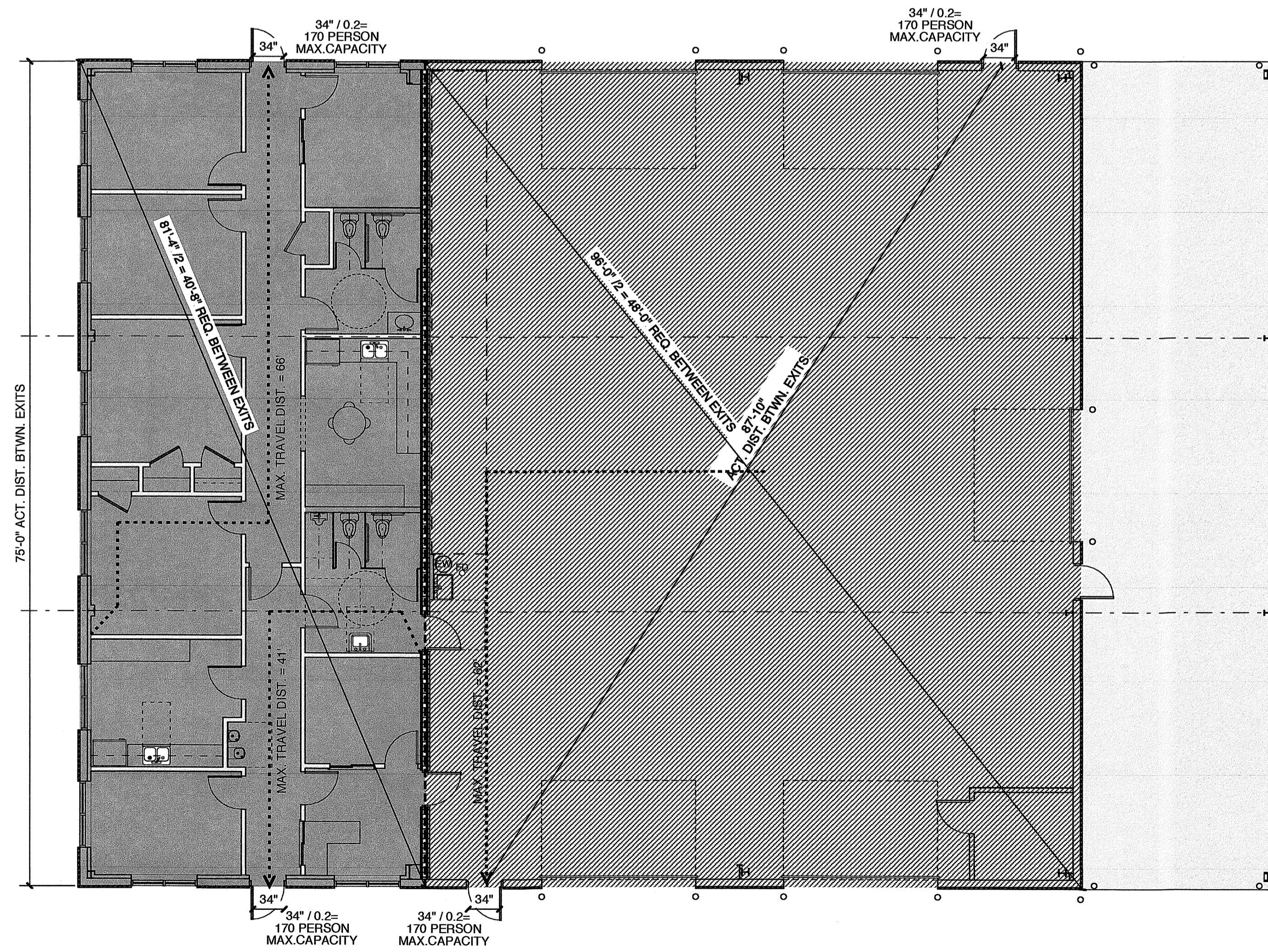
4 DESK SECTION
SCALE: 1/2" = 1'-0"



3 DESK SECTION
SCALE: 1/2" = 1'-0"



2 DESK PLAN
SCALE: 1/2" = 1'-0"



1 LIFE SAFETY PLAN
SCALE: 1/8" = 1'-0"

AREAS

2,356 SF	OFFICE AREA
4,469 SF	SHOP AREA
6,825 SF	TOTAL AREA
1,331 SF	CANOPY AREA

EGRESS REQ. & CODE REF.

USE: BUSINESS	2,356 SF/100 = 24 PEOPLE
USE: REPAIR GARARGE	4,469 SF/ 500 = 9 PEOPLE
USE: STORAGE	1,340 SF/ 500 = 3 PEOPLE

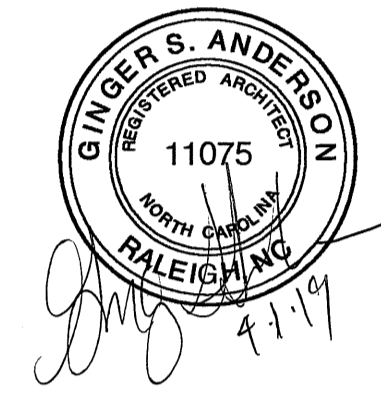
36 x 0.2" = 7.2" CLEAR EGRESS WIDTH REQ'D
DOORS TO HAVE 32" MIN. CLR. PER 404.2.2 OF ANSI A117.1
THE CLEAR WIDTH OF INTERIOR ACCESSIBLE ROUTE IS 36" MIN. PER 403.5 OF ANSI A117.1

WEEKS TURNER ARCHITECTURE

WEEKS TURNER ARCHITECTURE, PA
3305-109 Durham Drive
Raleigh, North Carolina 27603
919.779.9797 fax: 919.779.0826
www.weeksturner.com

Ruffy Peedin
COMMERCIAL DESIGN BUILD

5121 Kingdom Way, Suite 208
Raleigh, North Carolina 27607
919.459.8188
www.Ruffy-Peedin.com



PROJECT TITLE
G&D HAULING

JARCO DRIVE
FLOQUAY-VARINA, NORTH CAROLINA

PROJECT NO.
1842

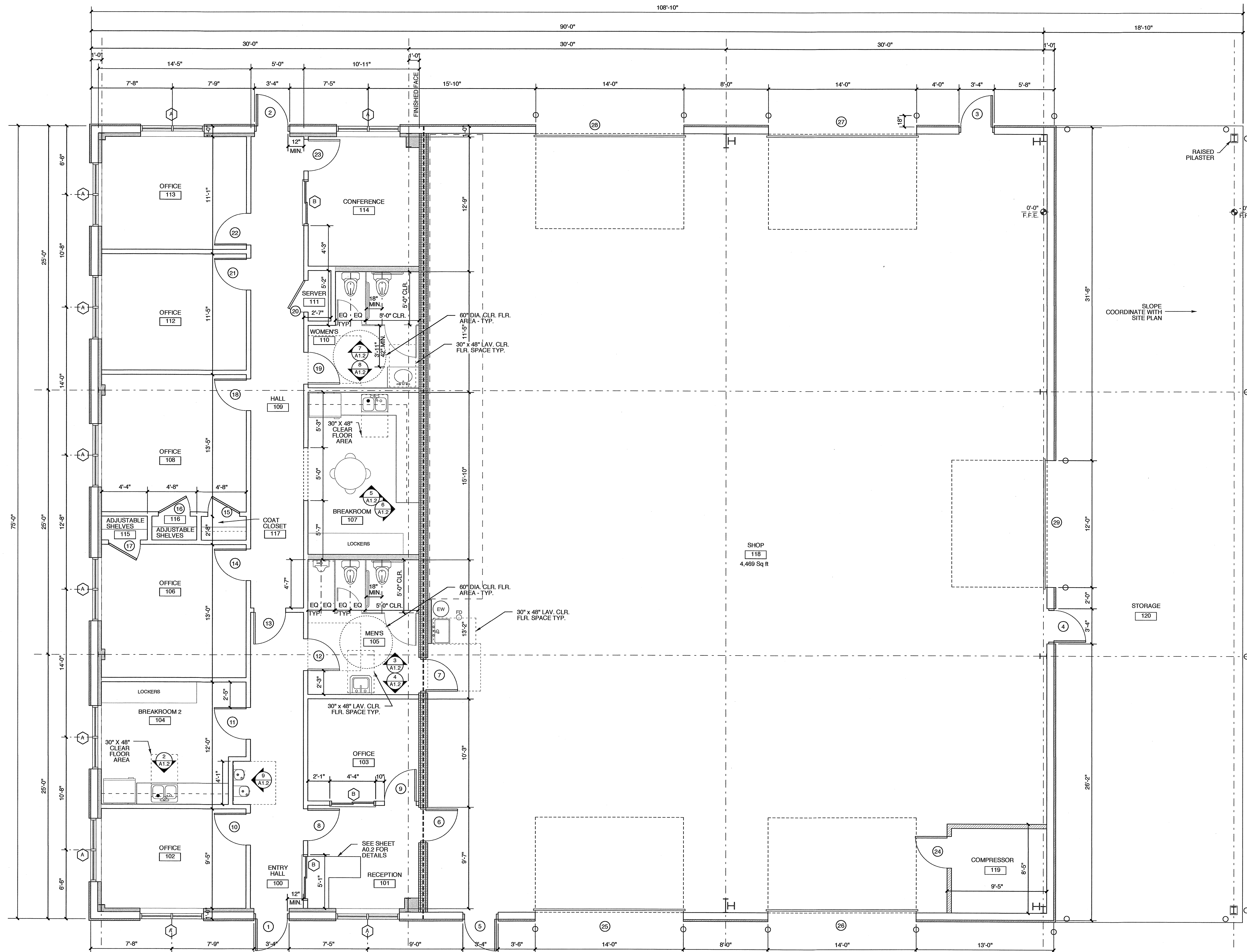
DRAWING TITLE
LIFE SAFETY

SHEET 2 OF 7

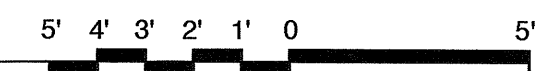
A0.2

PLOT DATE 4/1/19
REVISION 00/00/16

This original sheet is 24" x 36"; other dimensions indicate it has been altered.
All information on this sheet is the property of Weeks Turner Architecture and may not be duplicated in whole or in part without written authorization from Weeks Turner Architecture, 2016 ©



1 FLOOR PLAN
SCALE: 1/4" = 1'-0"



**WEEKS
TURNER
ARCHITECTURE**

WEEKS TURNER ARCHITECTURE, PA
3305-108 Durham Drive
Raleigh, North Carolina 27603
919.779.9797 fax: 919.779.0826
www.weeksturner.com

Ruffy Peedin
COMMERCIAL DESIGN BUILD

5121 Kingdom Way, Suite 208
Raleigh, North Carolina 27607
919.458.8188
www.Ruffy-Peedin.com



WALL LEGEND

- EXT. METAL WALL PANEL WITH LINER SYSTEM & FURRING W/ DRYWALL
- EXT. METAL WALL PANEL WITH LINER SYSTEM
- 3 HOUR RATED FIRE BARRIER
- FULL HEIGHT MTL STUD WALL
- PARTIAL HEIGHT MTL STUD WALL 3 5/8"
- PARTIAL HEIGHT MTL STUD WALL 6"

PROJECT TITLE
G&D HAULING

JARCO DRIVE
FUQUAY-VARINA, NORTH CAROLINA

PROJECT NO.
1842

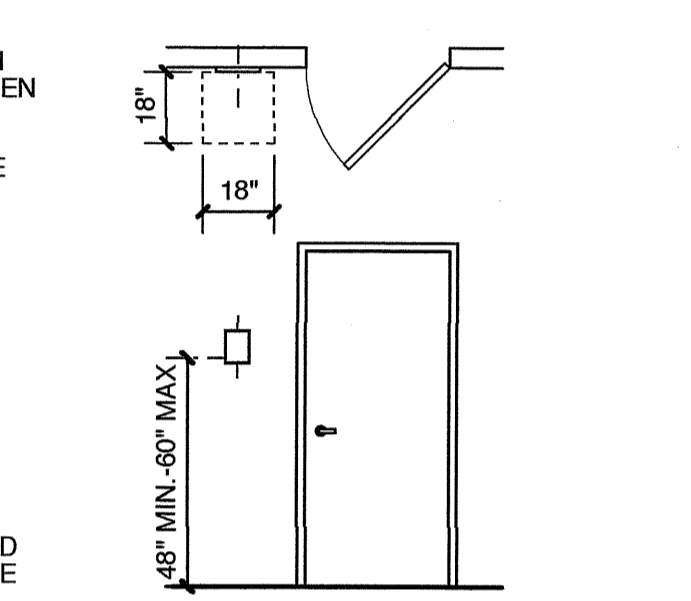
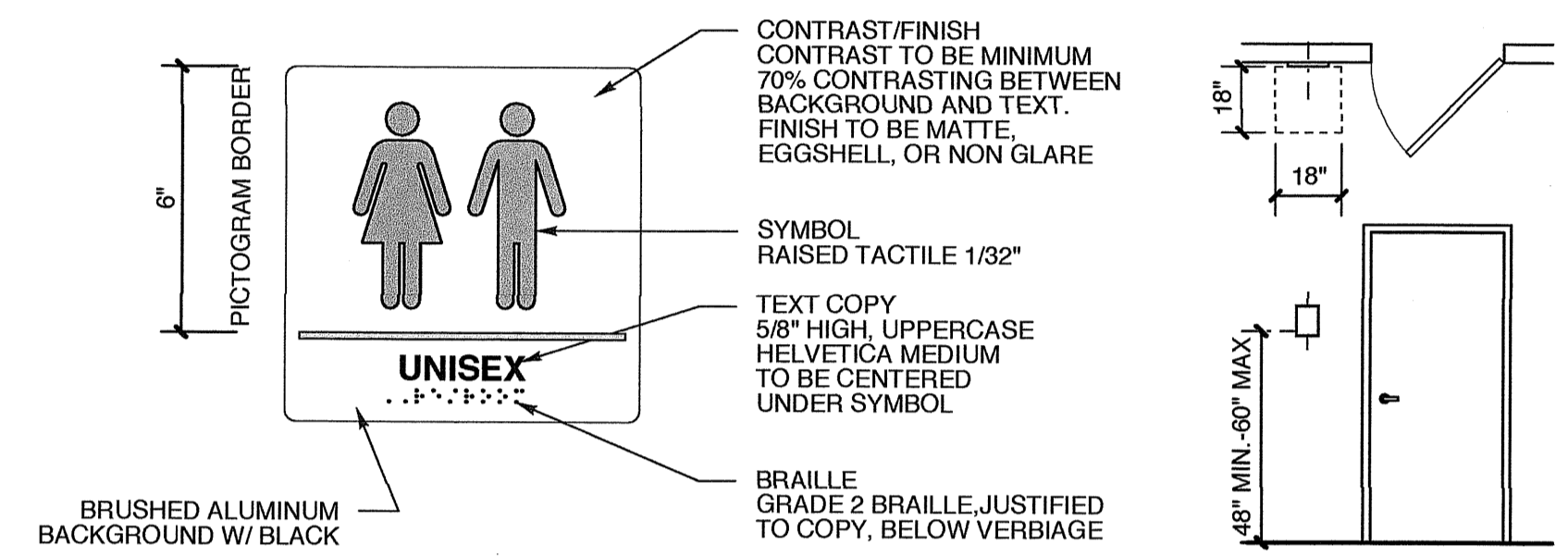
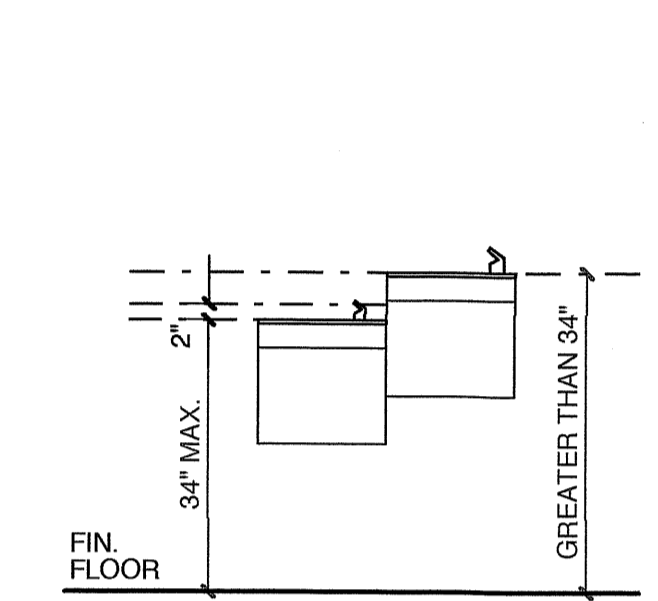
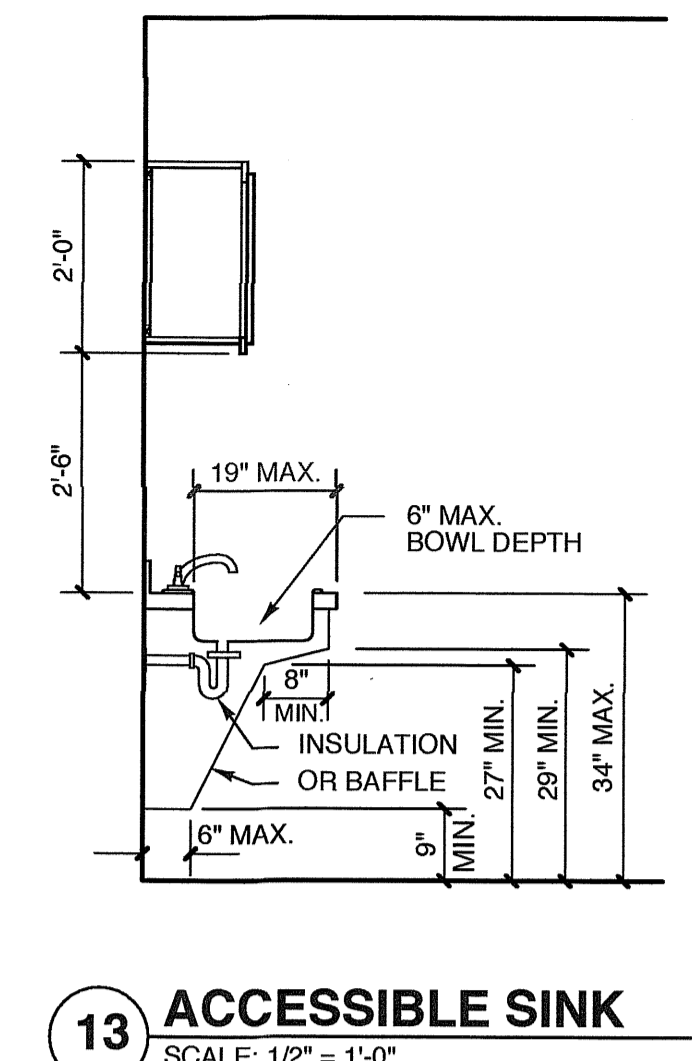
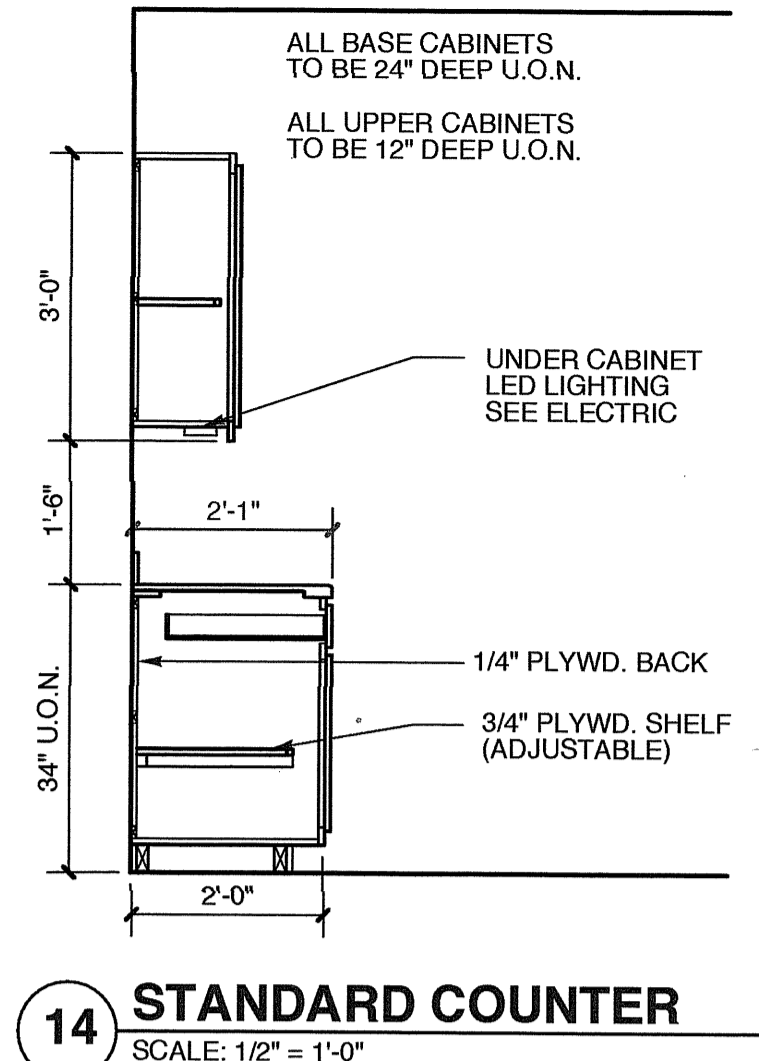
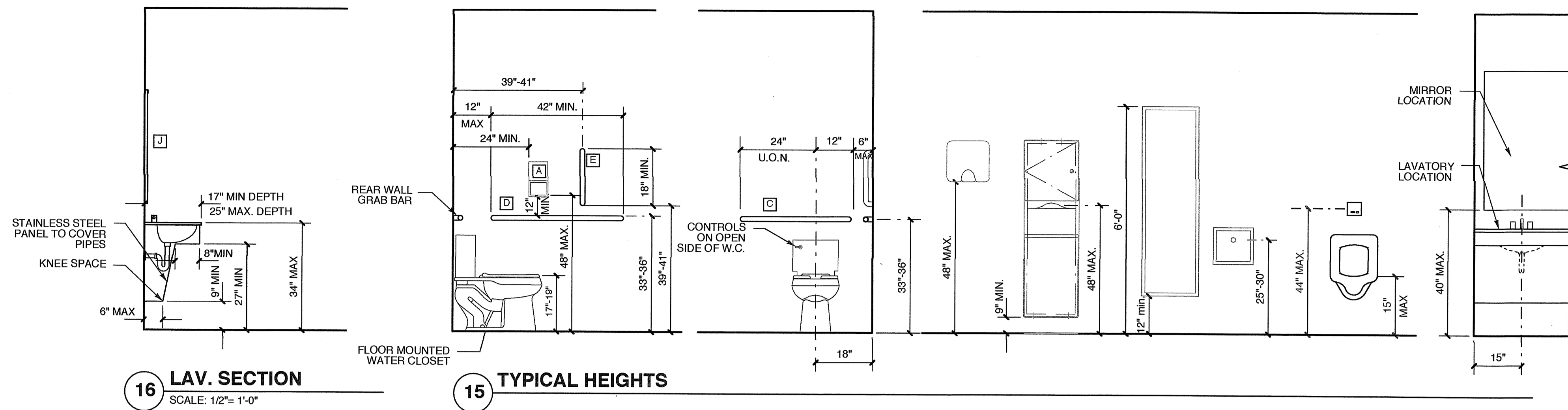
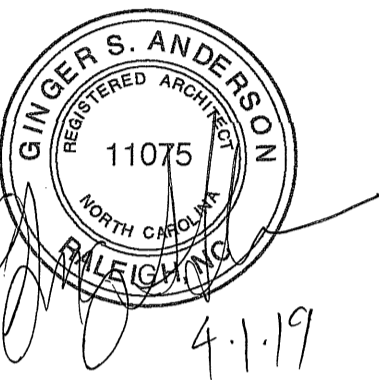
DRAWING TITLE
FLOOR PLAN

SHEET 3 OF 7

A1.1

PLOT DATE 4/1/19
REVISION 00/00/08

This original sheet is 24" x 36". Other dimensions indicate it has been altered.
All information on this sheet is the property of Weeks Turner Architecture and may not be duplicated, in whole or in part, without written authorization from Weeks Turner Architecture. 2008 ©



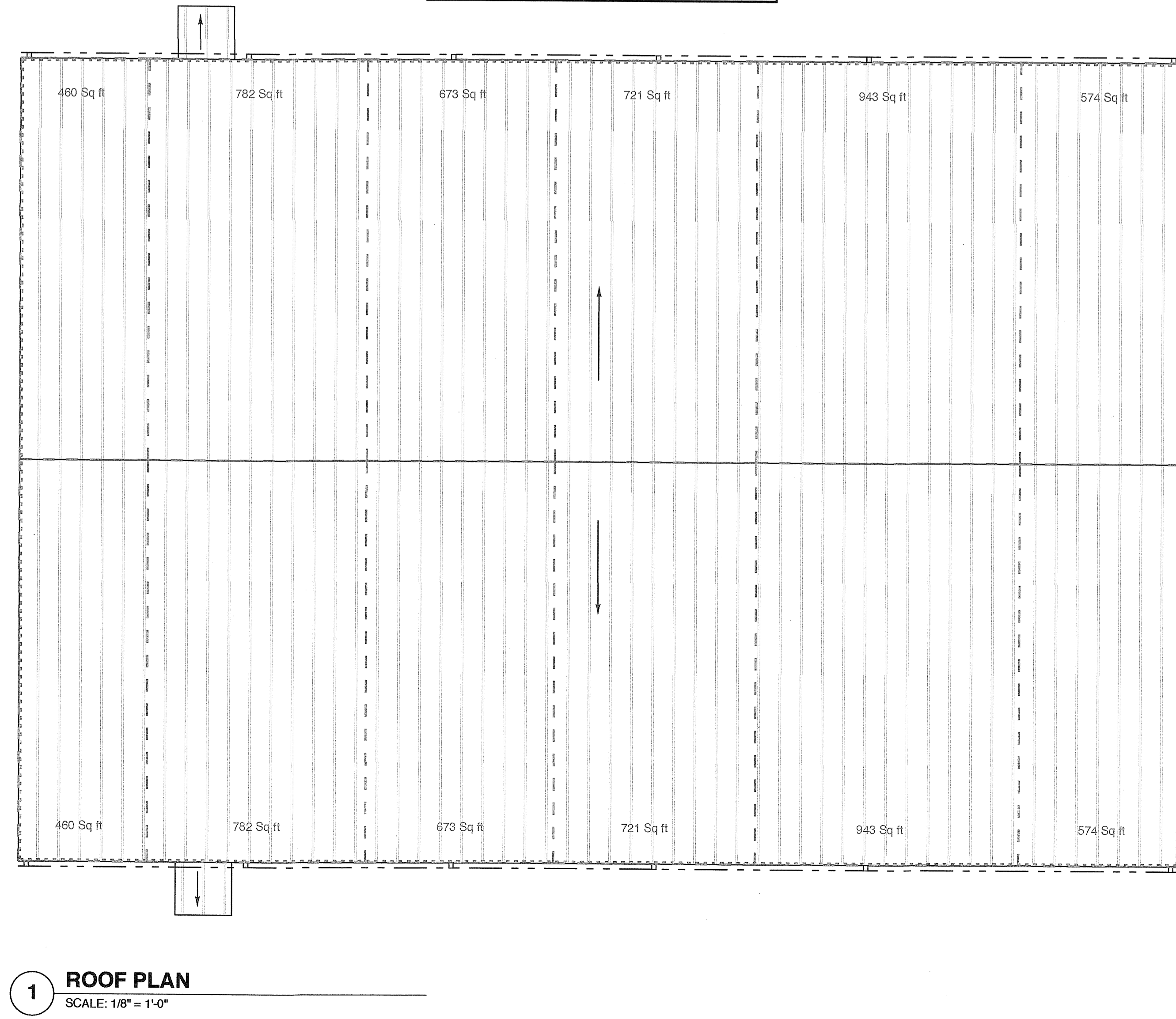
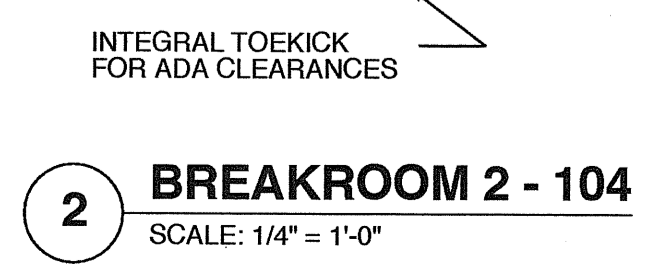
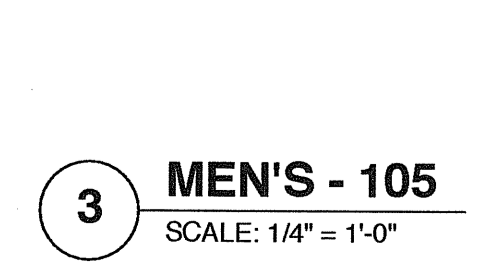
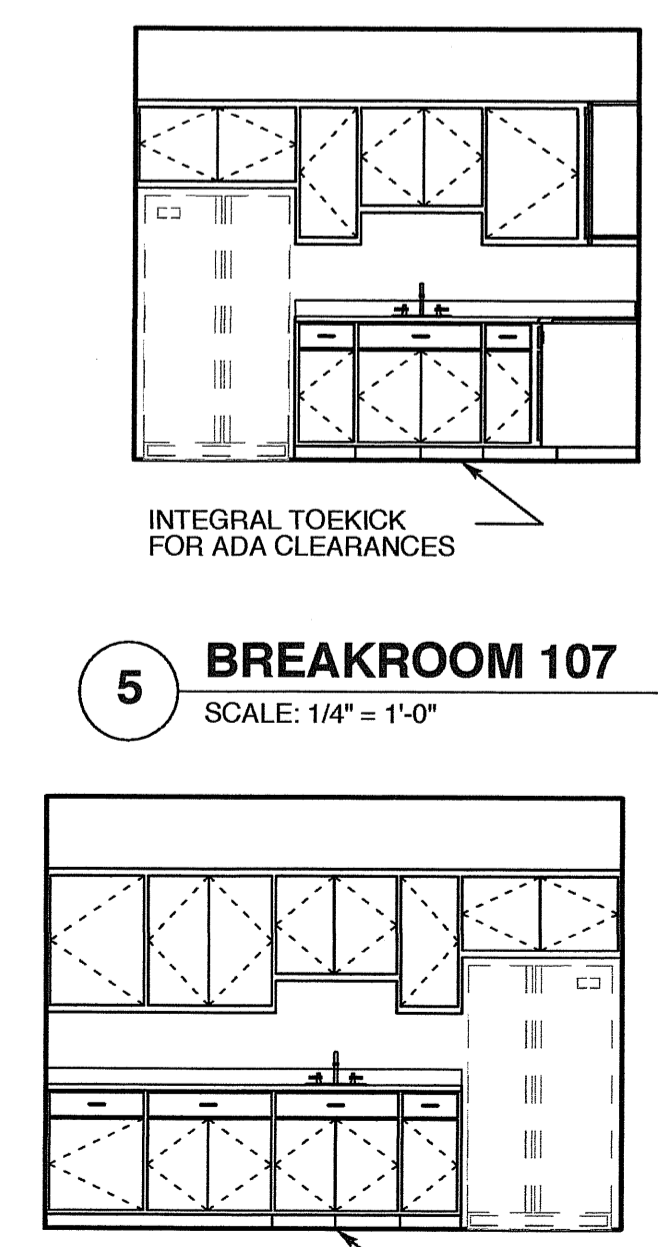
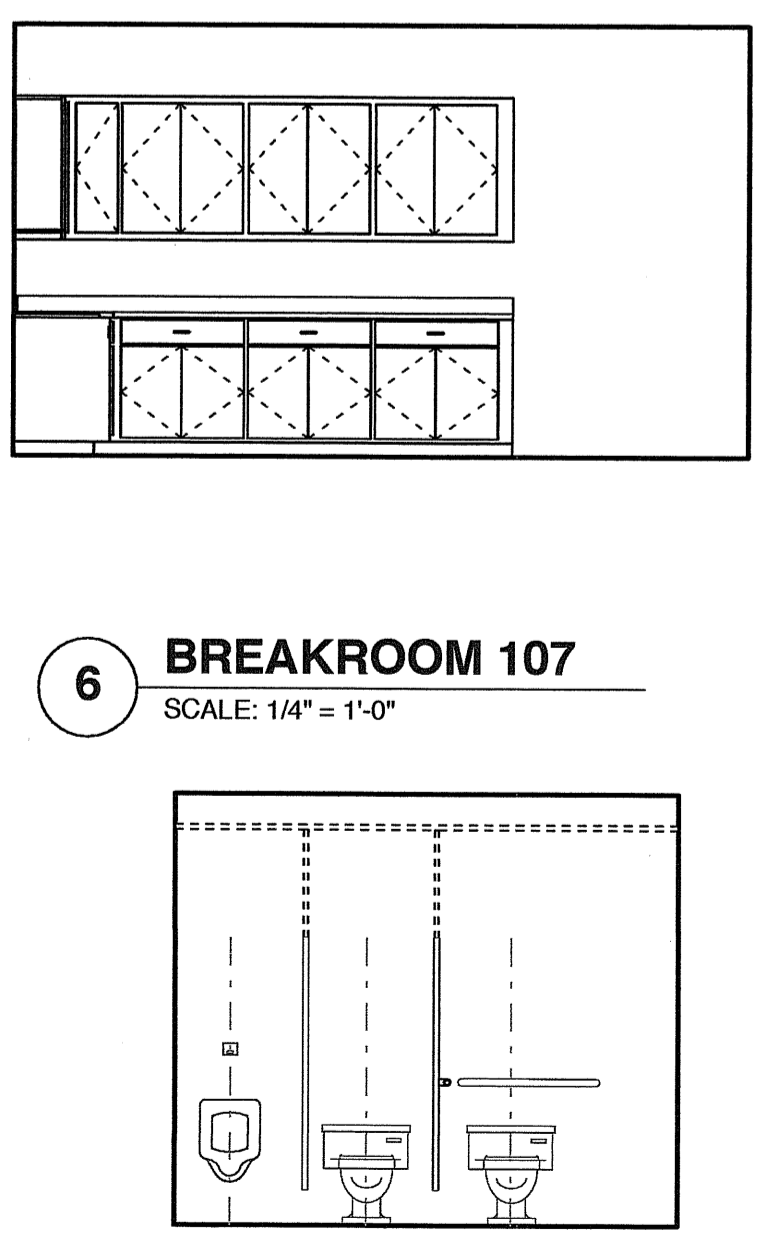
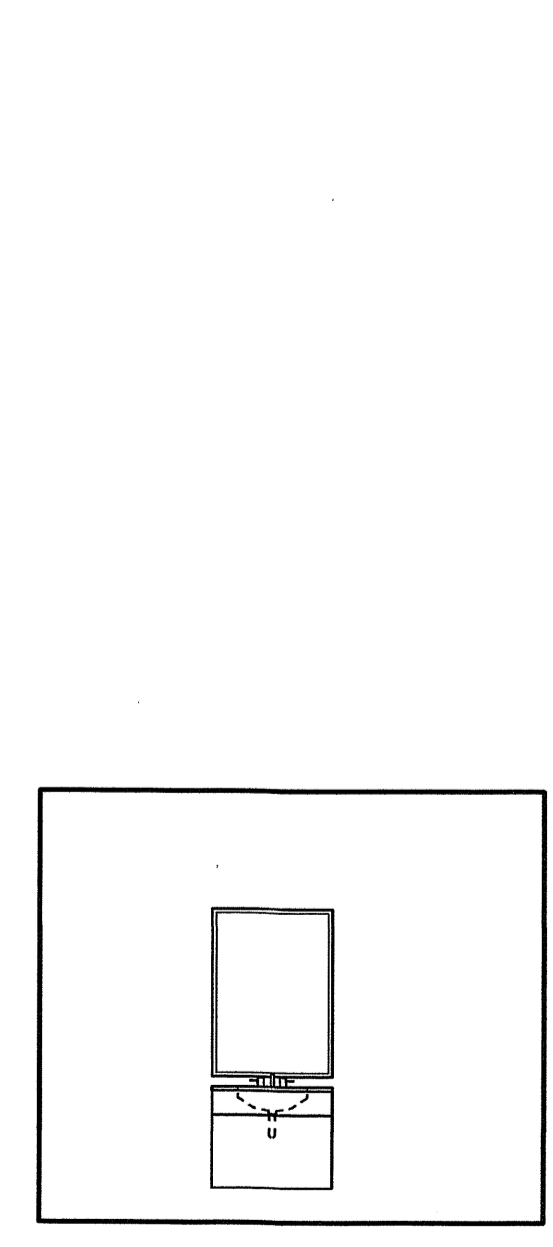
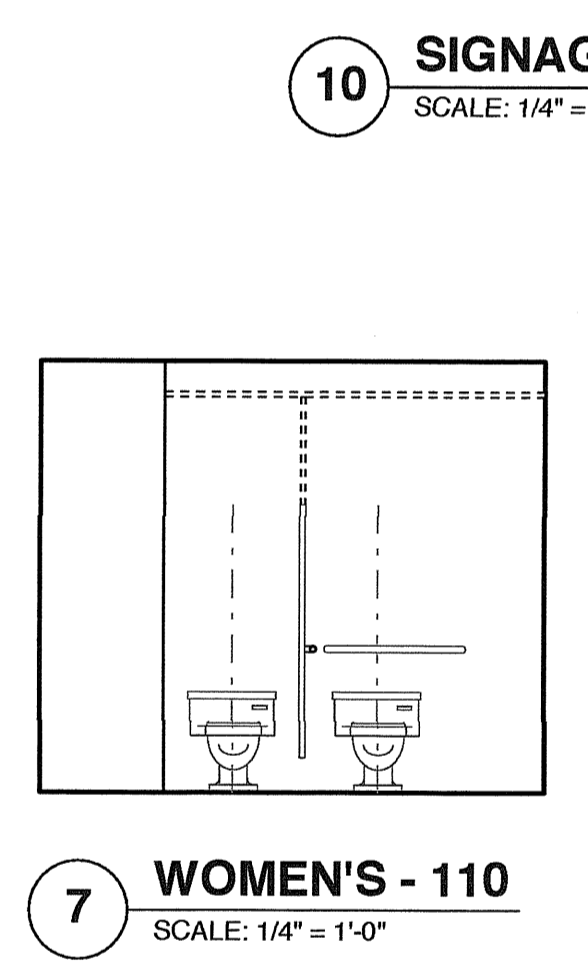
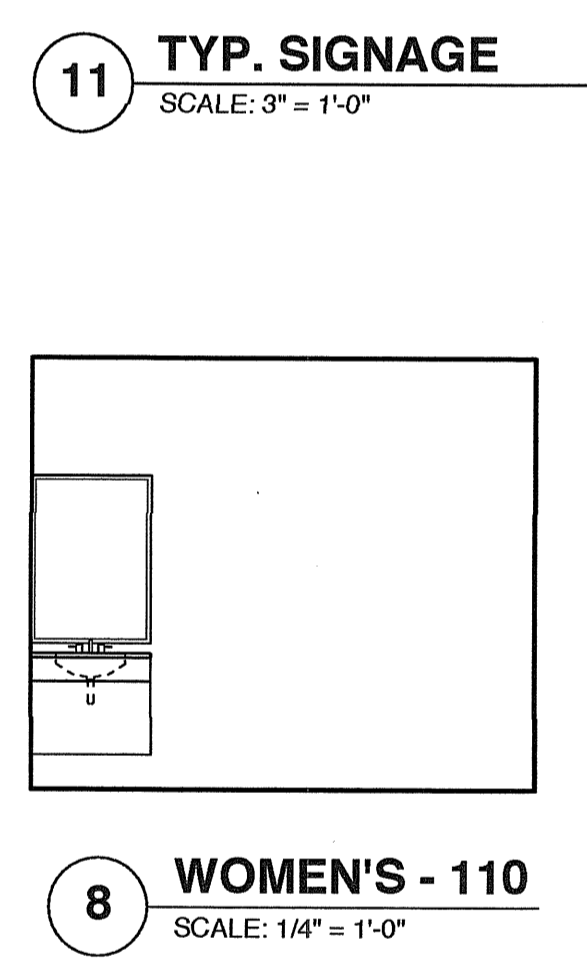
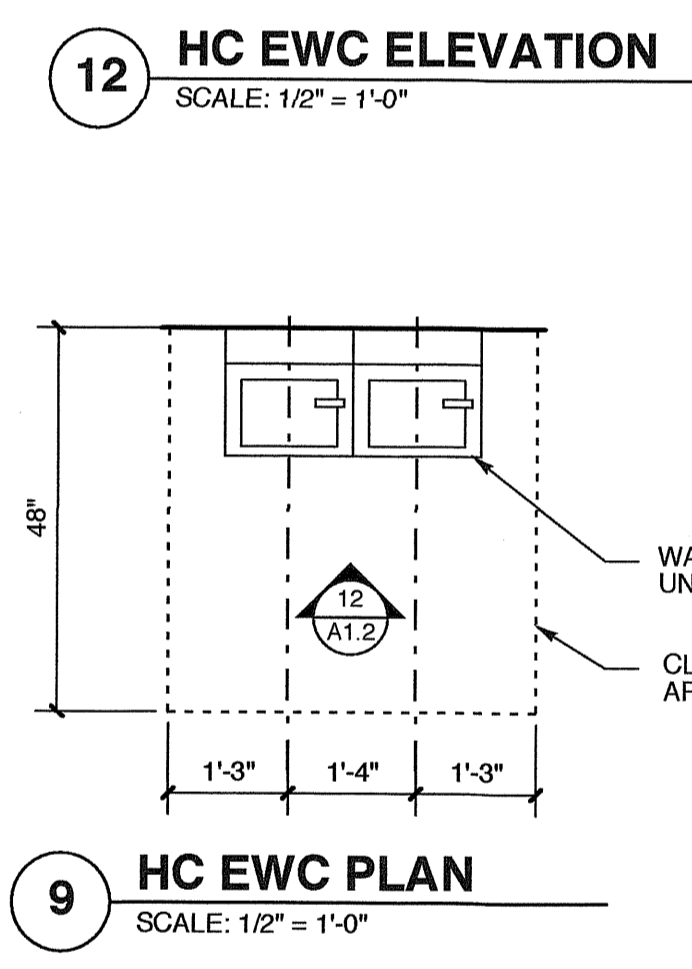
ROOF DRAINAGE LEGEND

	3.5\" x 5\" VERTICAL LEADER
	5\" EAVE GUTTER @ 1/8:12 SLOPE

ALL ROOF PENETRATIONS TO BE PAINTED TO MATCH ROOF.

ROOF DRAINAGE CALCULATIONS
PER 2012 NC PLUMBING CODE

TABLE 1106.2 (2) RECTANGULAR VERTICAL LEADERS		
3-1/2 X 5	@ 4\"/HR	5,320 SF MAX AREA
TABLE 1106.6 SIZE OF SEMI-CIRCULAR ROOF GUTTERS		
5\" DIA.	@ 4\"/HR	880 SF MAX AREA @ 1/8: 12 (1%) SLOPE



**FOR PERMIT
PROCESS ONLY**

PROJECT TITLE
G&D HAULING

JARCO DRIVE
FUQUAY-VARINA, NORTH CAROLINA

PROJECT NO.
1842

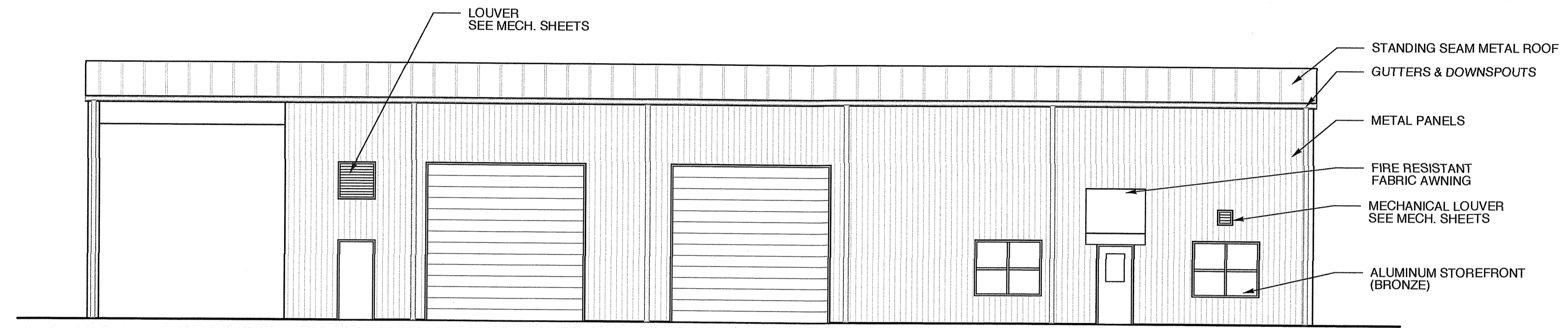
DRAWING TITLE
ROOF PLAN

SHEET 4 OF 7

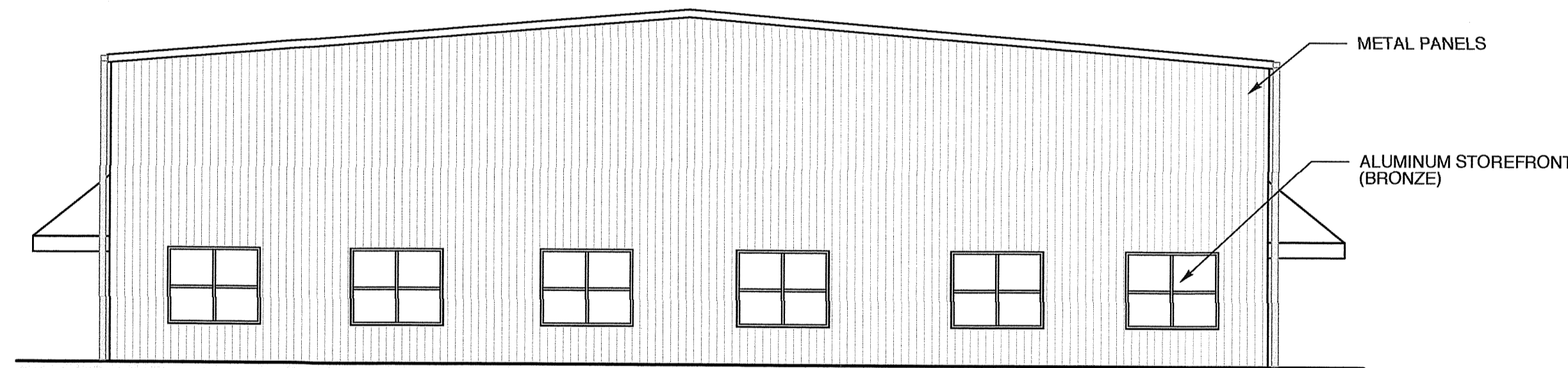
A1.2

PLOT DATE 4/1/19
REVISION 00/00/08

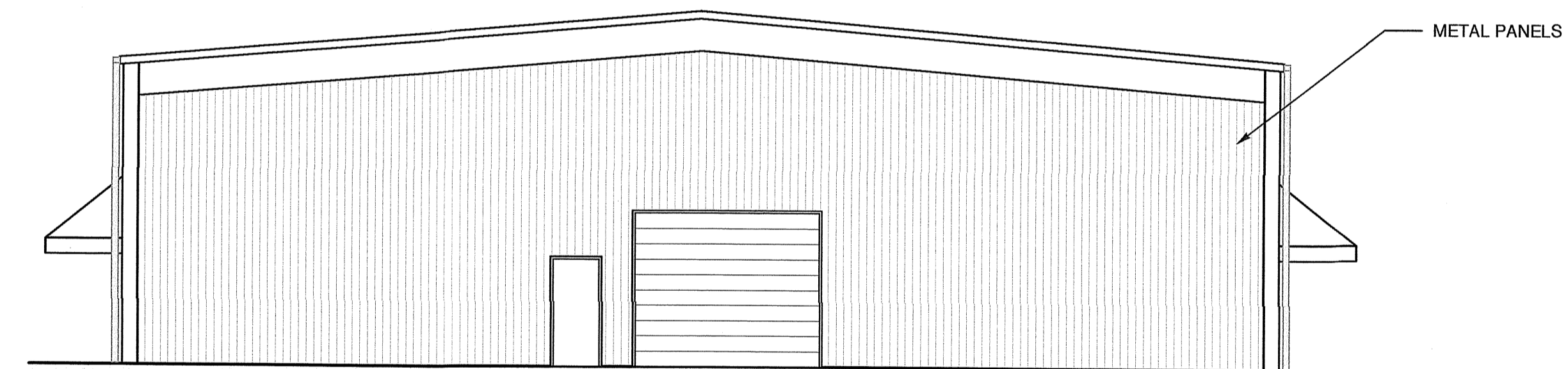
This original sheet is 24\" x 36\"; other dimensions indicate it has been altered.
All information on this sheet is the property of Weeks Turner Architecture and may not be duplicated in whole or in part without written authorization from Weeks Turner Architecture. 2008 ©



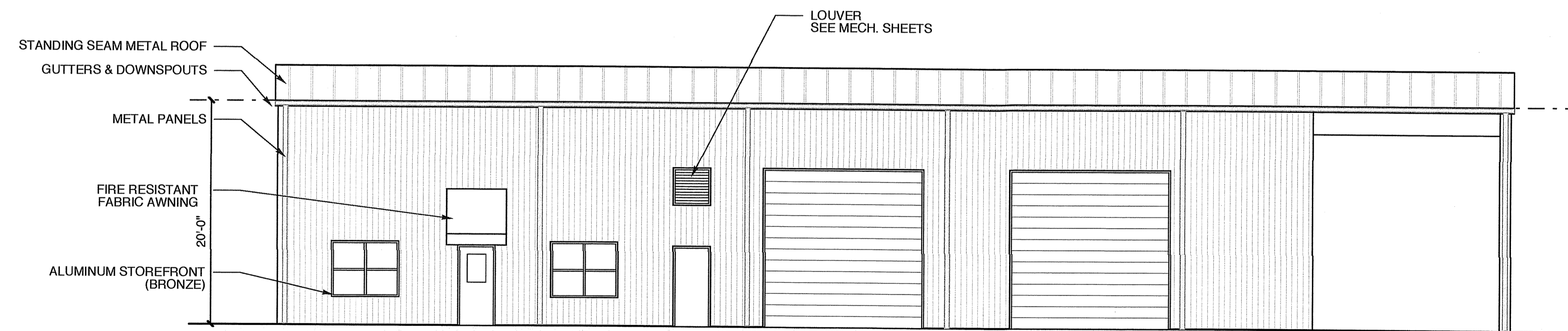
4 REAR ELEVATION
SCALE: 1/8" = 1'-0"



3 LEFT ELEVATION
SCALE: 1/8" = 1'-0"



2 RIGHT ELEVATION
SCALE: 1/8" = 1'-0"



1 FRONT ELEVATION
SCALE: 1/8" = 1'-0"

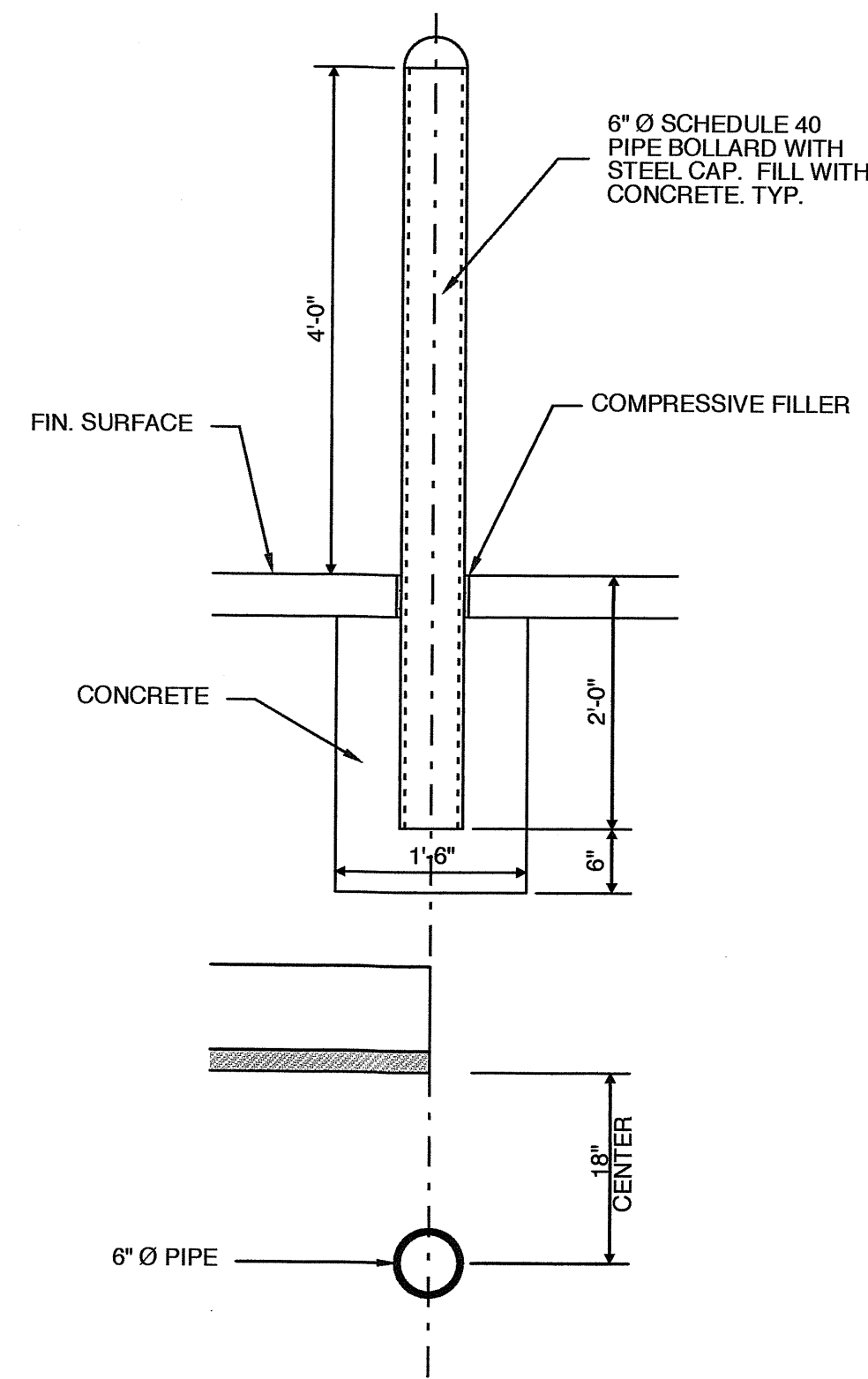
PROJECT TITLE
G&D
JARCO DRIVE
FUQUAY-VARINA, NORTH CAROLINA

PROJECT NO.
1842
DRAWING TITLE
ELEVATIONS

SHEET 5 OF 7

A2

PLOT DATE 4/11/19
REVISION 00/00/08

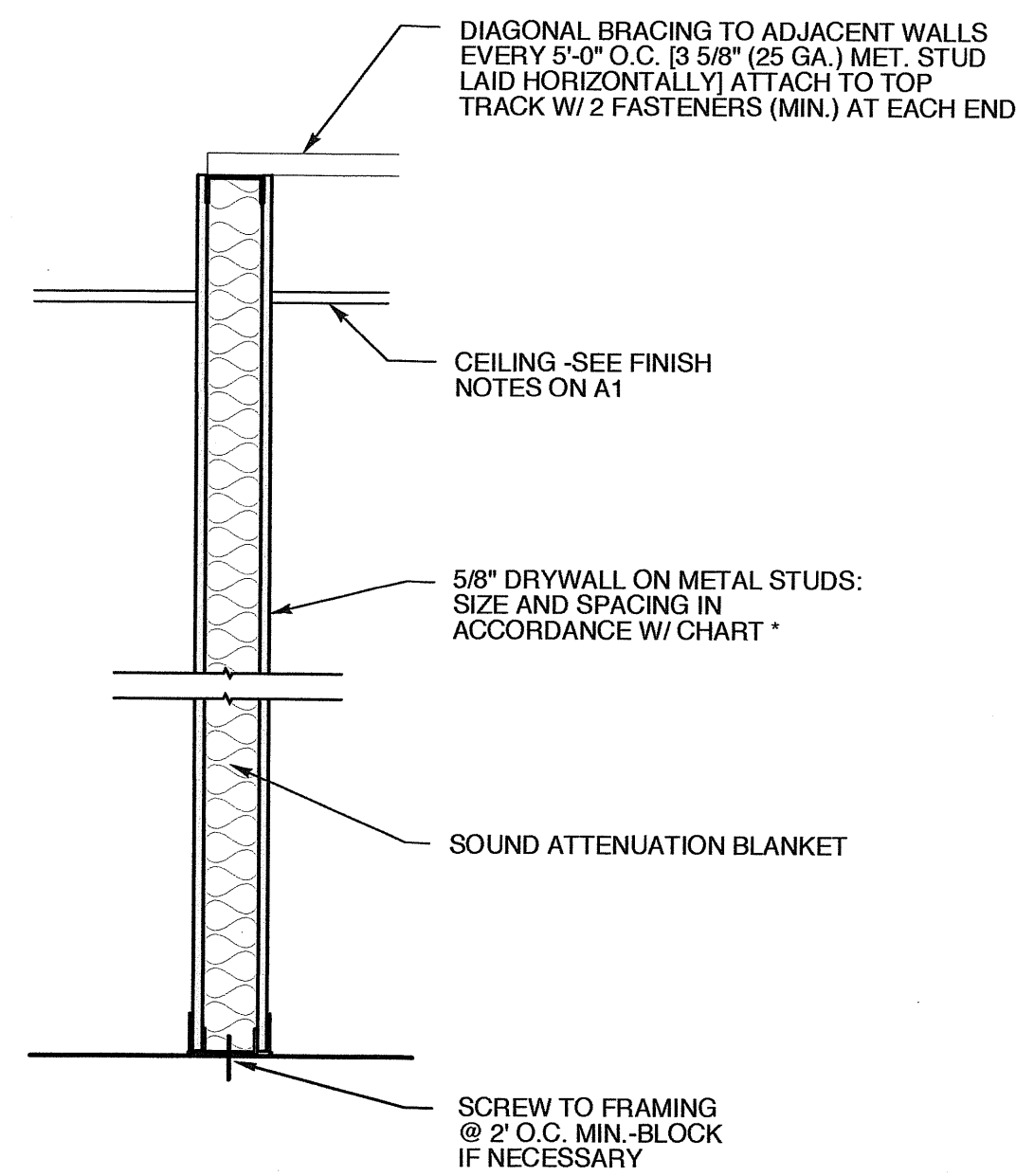


2 BOLLARD DETAIL
SCALE: 3/4" = 1'-0"

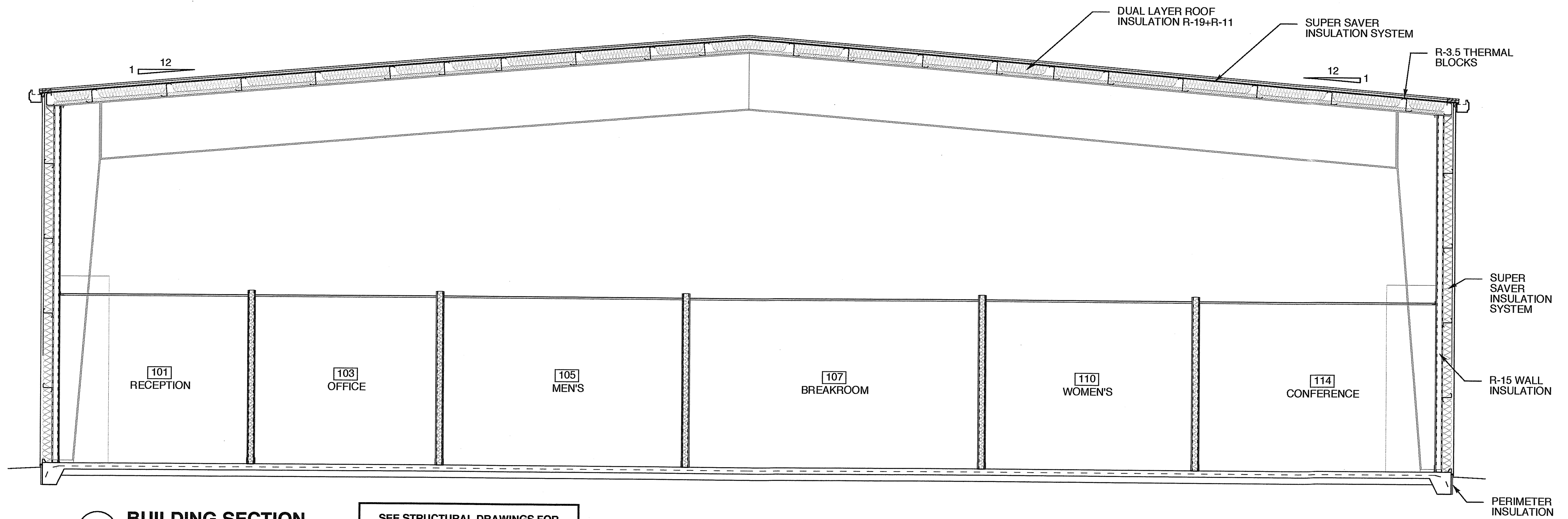
MAXIMUM STUD HEIGHTS FOR INTERIOR TENANT SEPARATION WALLS

Size	Gauge	O.C. Spacing	Max. Height
2 1/2"	25 ga.	12"	13'-11"
		16"	12'-8"
		24"	11'-1"
3 5/8"	24 ga.	12"	18'-6"
		16"	16'-10"
		24"	14'-8"
3 1/2"	25 ga.	12"	18'-0"
		16"	16'-4"
		24"	14'-4"
6"	25 ga.	12"	27'-7"
		16"	26'-0"
		24"	21'-10"
8"	25 ga.	12"	34'-10"
		16"	31'-7"
		24"	27'-7"

Top track by Fire Trak Corp. or equal and of same gauge as stud
 * Based upon information furnished by Dietrich for CWN type steel studs.
 (alternate stud types and gauges shall be approved by the architect)

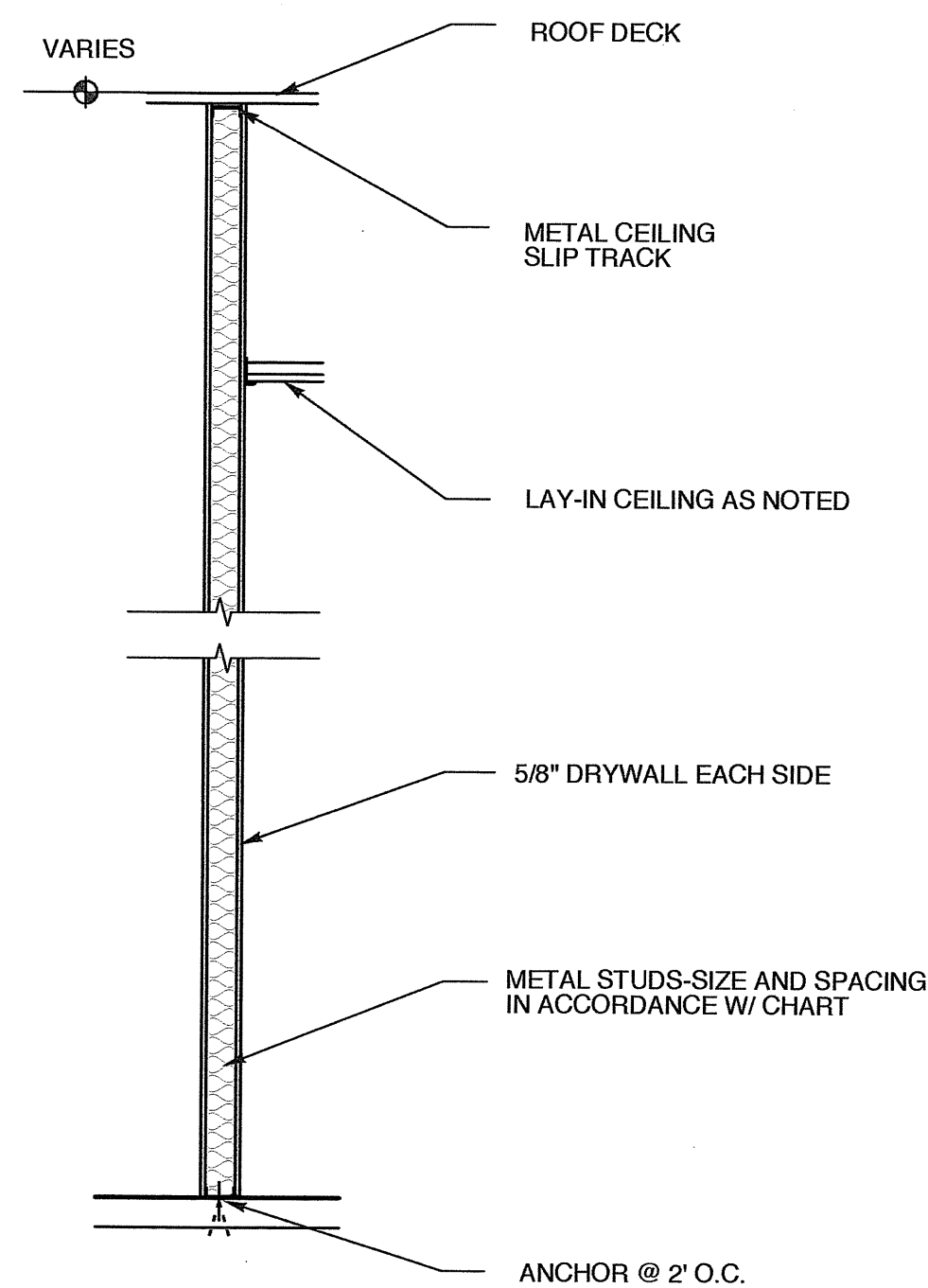


6 NON-RATED WALL SECTION
SCALE: NTS

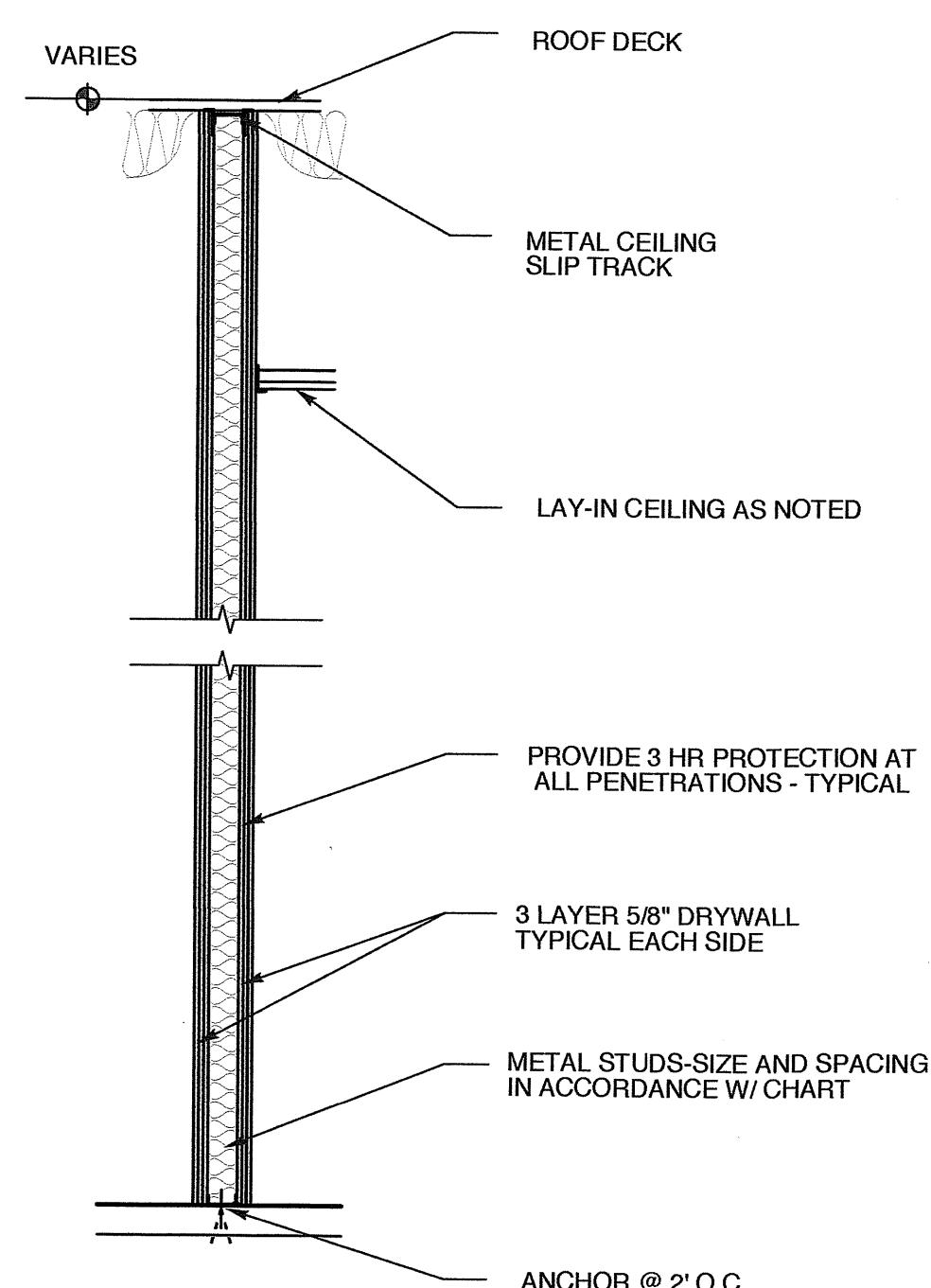


1 BUILDING SECTION
SCALE: 1/4" = 1'-0"

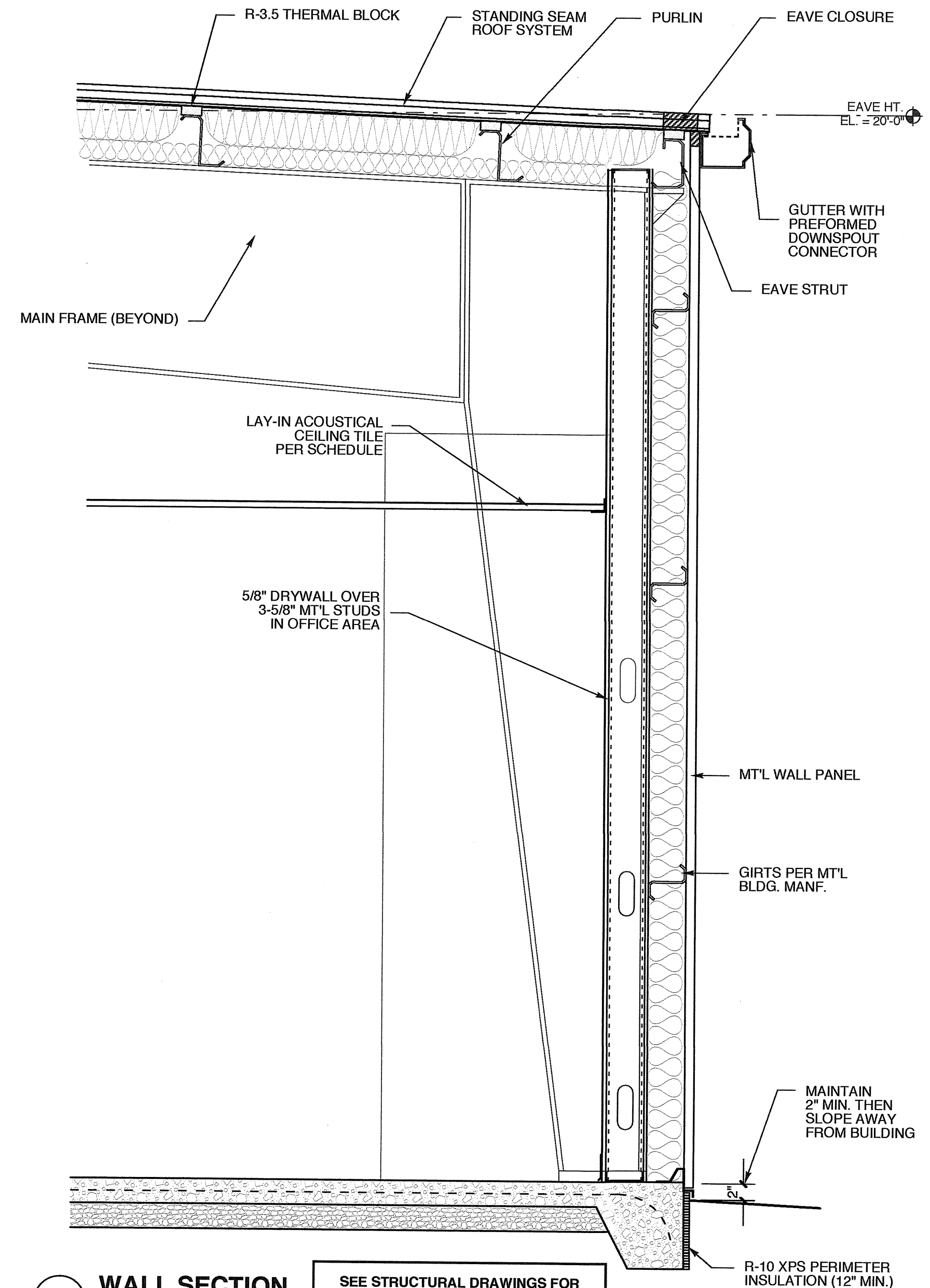
SEE STRUCTURAL DRAWINGS FOR FOUNDATION AND FRAMING INFORMATION



5 FULL HEIGHT WALL SECTION
SCALE: 1/2" = 1'-0"

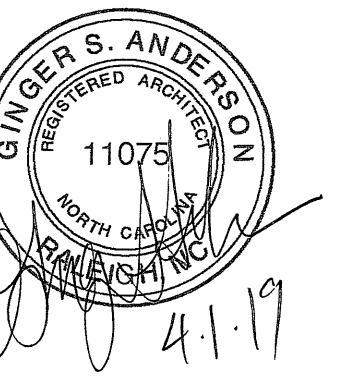


4 3 HOUR SEPARATION WALL
SCALE: 1/2" = 1'-0"



3 WALL SECTION
SCALE: 3/4" = 1'-0"

SEE STRUCTURAL DRAWINGS FOR FOUNDATION AND FRAMING INFORMATION



DOOR SCHEDULE							
MARK	DOOR		FRAME			HWDR SET NO.	REMARKS
	SIZE	MAT'L	TYPE	TYPE	DETAILS		
16	3'-0" x 7'-0" x 1-3/4"	SC. WD.	C	B	---	5	---
17	3'-0" x 7'-0" x 1-3/4"	SC. WD.	C	B	---	5	---
18	3'-0" x 7'-0" x 1-3/4"	SC. WD.	C	B	---	5	---
19	3'-0" x 7'-0" x 1-3/4"	SC. WD.	C	B	---	2	---
20	3'-0" x 7'-0" x 1-3/4"	SC. WD.	F	B	---	5	---
21	3'-0" x 7'-0" x 1-3/4"	SC. WD.	C	B	---	5	---
22	3'-0" x 7'-0" x 1-3/4"	SC. WD.	C	B	---	5	---
23	3'-0" x 7'-0" x 1-3/4"	SC. WD.	C	B	---	5	---
24	3'-0" x 7'-0" x 1-3/4"	INSUL. HM.	G	B	---	5	---
25	14'-0" x 14'-0" x 1-3/4"	INSUL. HM.	H	C	---	---	---
26	14'-0" x 14'-0" x 1-3/4"	INSUL. HM.	H	C	---	---	---
27	14'-0" x 14'-0" x 1-3/4"	INSUL. HM.	H	C	---	---	---
28	14'-0" x 14'-0" x 1-3/4"	INSUL. HM.	H	C	---	---	---
28	12'-0" x 10'-0" x 1-3/4"	INSUL. HM.	H	C	---	---	---

NOTES:		HARDWARE SETS	
- COORDINATE KEYING OF HARDWARE WITH OWNER - DOOR HANDLES TO BE LEVER HANDLE - ALL DOORS TO MEET NCSBC SECTION 1609.1.2		1. CLOSER MORTISE LOCK 2. PUSH PULL SET WITH CLOSER 3. ELECTRIC KEYPAD CLOSER 4. PASSAGE SET W/ CLOSER 5. PASSAGE SET SEE SPEC FOR MORE INFORMATION	

DOOR SCHEDULE							
MARK	DOOR		FRAME			HWDR SET NO.	REMARKS
	SIZE	MAT'L	TYPE	TYPE	DETAILS		
1	3'-0" x 7'-0" x 1-3/4"	INSUL. HM.	A	A	---	1	BY PEMB
2	3'-0" x 7'-0" x 1-3/4"	INSUL. HM.	A	A	---	1	BY PEMB
3	3'-0" x 7'-0" x 1-3/4"	INSUL. HM.	B	A	---	1	BY PEMB
4	3'-0" x 7'-0" x 1-3/4"	INSUL. HM.	B	A	---	1	BY PEMB
5	3'-0" x 7'-0" x 1-3/4"	INSUL. HM.	B	A	---	1	BY PEMB
6	3'-0" x 7'-0" x 1-3/4"	INSUL. HM.	E	A	---	7	3 HR. RATED
7	3'-0" x 7'-0" x 1-3/4"	INSUL. HM.	E	A	---	7	3 HR. RATED
8	3'-0" x 7'-0" x 1-3/4"	SC. WD.	C	B	---	5	---
9	3'-0" x 7'-0" x 1-3/4"	SC. WD.	C	B	---	5	---
10	3'-0" x 7'-0" x 1-3/4"	SC. WD.	C	B	---	5	---
11	3'-0" x 7'-0" x 1-3/4"	SC. WD.	C	B	---	5	---
12	3'-0" x 7'-0" x 1-3/4"	SC. WD.	C	B	---	2	---
13	3'-0" x 7'-0" x 1-3/4"	SC. WD.	D	B	---	3	---
14	3'-0" x 7'-0" x 1-3/4"	SC. WD.	C	B	---	5	---
15	3'-0" x 7'-0" x 1-3/4"	SC. WD.	F	C	---	5	---

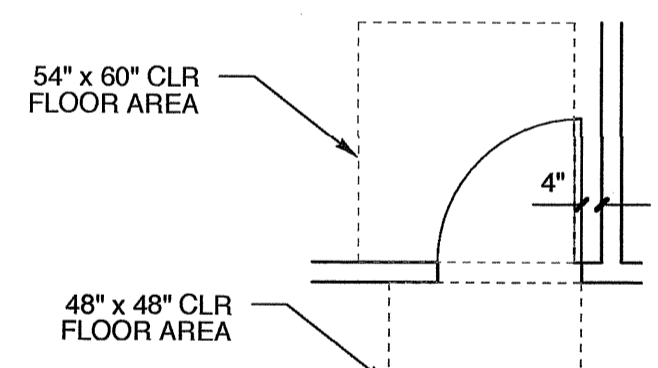
NOTES:		HARDWARE SETS	
- COORDINATE KEYING OF HARDWARE WITH OWNER - DOOR HANDLES TO BE LEVER HANDLE - ALL DOORS TO MEET NCSBC SECTION 1609.1.2		1. CLOSER MORTISE LOCK 2. PUSH / PULL SET WITH CLOSER 3. ELECTRIC KEYPAD W/ CLOSER 4. PASSAGE SET W/ CLOSER 5. PASSAGE SET 6. PRIVACY SET 7. PASSAGE SET W/ CLOSER, DOOR WEATHER SEAL KIT, THRESHOLD, AND SWEEP SEE SPEC FOR MORE INFORMATION	

ROOM FINISH SCHEDULE									
MARK	ROOM NAME	FLOOR	BASE	WALL			CEILING		REMARKS / NOTES
				N	E	S	W	WAINSCOT	
100	ENTRY HALL	VCT	RUBBER	PTD. DW.	---	---	ACC. TILE	9'-0"	---
101	RECEPTION	VCT	RUBBER	PTD. DW.	---	---	ACC. TILE	9'-0"	---
102	OFFICE	VCT	RUBBER	PTD. DW.	---	---	ACC. TILE	9'-0"	---
103	OFFICE	VCT	RUBBER	PTD. DW.	---	---	ACC. TILE	9'-0"	---
104	BREAK ROOM 2	VCT	RUBBER	PTD. DW.	---	---	ACC. TILE	9'-0"	---
105	MEN'S	CONCRETE	RUBBER	PTD. DW.	---	---	ACC. TILE	9'-0"	---
106	OFFICE	CARPET	RUBBER	PTD. DW.	---	---	ACC. TILE	9'-0"	---
107	BREAKROOM	VCT	RUBBER	PTD. DW.	---	---	ACC. TILE	9'-0"	---
108	OFFICE	CARPET	RUBBER	PTD. DW.	---	---	ACC. TILE	9'-0"	---
109	HALL	VCT	RUBBER	PTD. DW.	---	---	ACC. TILE	9'-0"	---
110	WOMEN'S	VCT	RUBBER	PTD. DW.	---	---	ACC. TILE	9'-0"	---
111	SERVER	VCT	RUBBER	PTD. DW.	---	---	ACC. TILE	9'-0"	---
112	OFFICE	CARPET	RUBBER	PTD. DW.	---	---	ACC. TILE	9'-0"	---
113	OFFICE	CARPET	RUBBER	PTD. DW.	---	---	ACC. TILE	9'-0"	---
114	CONFERENCE	CARPET	RUBBER	PTD. DW.	---	---	ACC. TILE	9'-0"	---
115	CLOSET	CARPET	RUBBER	PTD. DW.	---	---	ACC. TILE	9'-0"	---
115	CLOSET	CARPET	RUBBER	PTD. DW.	---	---	ACC. TILE	9'-0"	---
115	CLOSET	CARPET	RUBBER	PTD. DW.	---	---	ACC. TILE	9'-0"	---
115	SHOP	CONCRETE	RUBBER	PTD. DW. @ INT.	---	---	OPEN TO STRUCTURE	---	RUBBER BASE @ GBW
119	COMPRESSOR	CONCRETE	RUBBER	PTD. DW. @ INT.	---	---	OPEN TO STRUCTURE	---	RUBBER BASE @ GBW
120	STORAGE	CONCRETE	RUBBER	---	---	---	OPEN TO STRUCTURE	---	BROOM FINISH

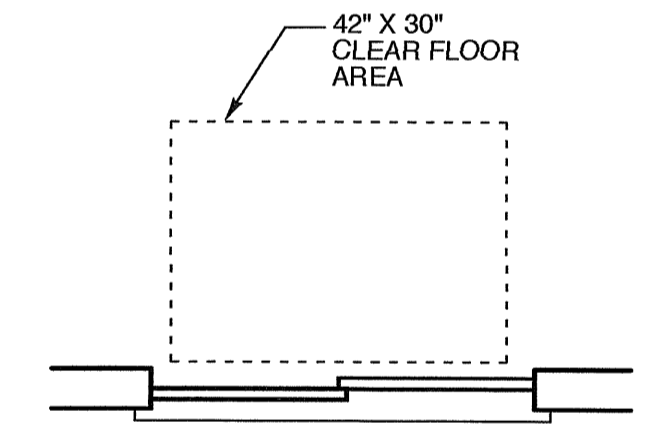
CONFIRM W/ OWNER

WINDOW SCHEDULE							
MARK	W	SIZE	H	TYPE	MATERIAL	GLASS	REMARKS
B	4'-4"	4'-0"	2	ALUMINUM	TEMPERED	SLIDING LOCKABLE	

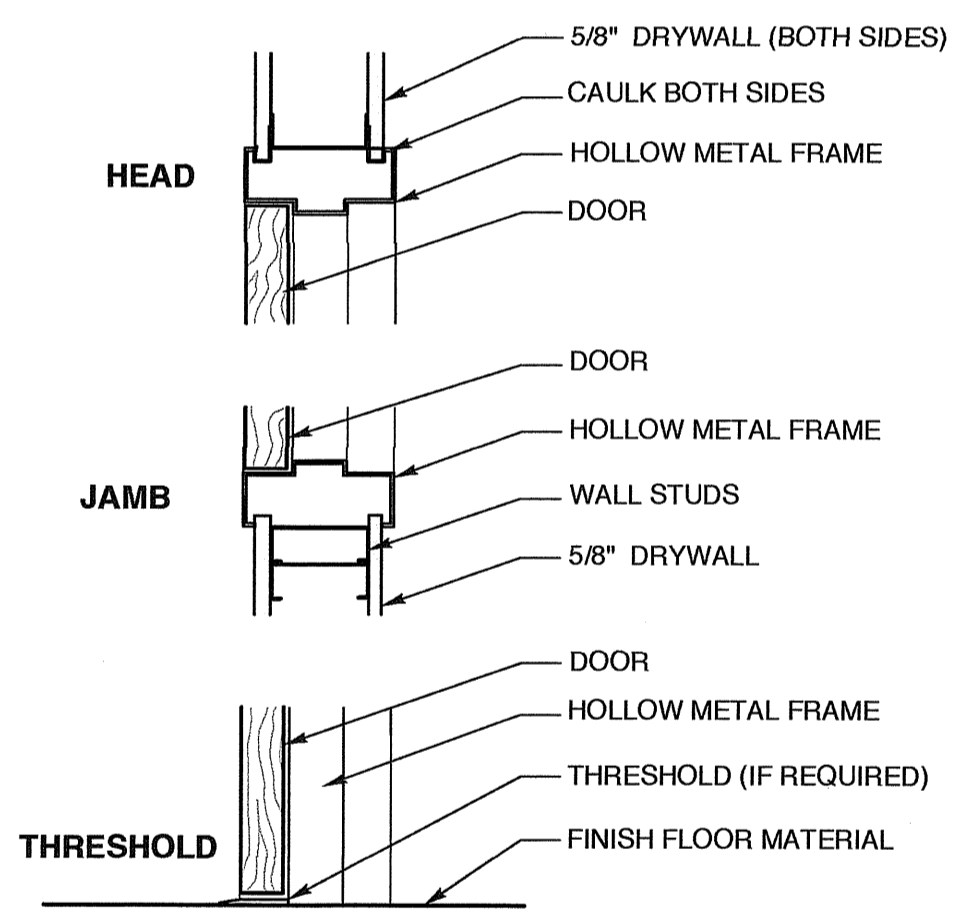
NOTES:
 -SEE WINDOW TYPE ELEVATIONS AND DETAILS.
 -FIELD VERIFY ALL EXISTING OPENING SIZES. DIMENSIONS GIVEN FOR REFERENCE.
 -INCLUDE THERMAL BREAK PER MANUFACTURER'S STANDARDS WITH ALL FRAMES.
 -ALL WINDOWS TO MEET NCSBC SECTION 1609.1.2



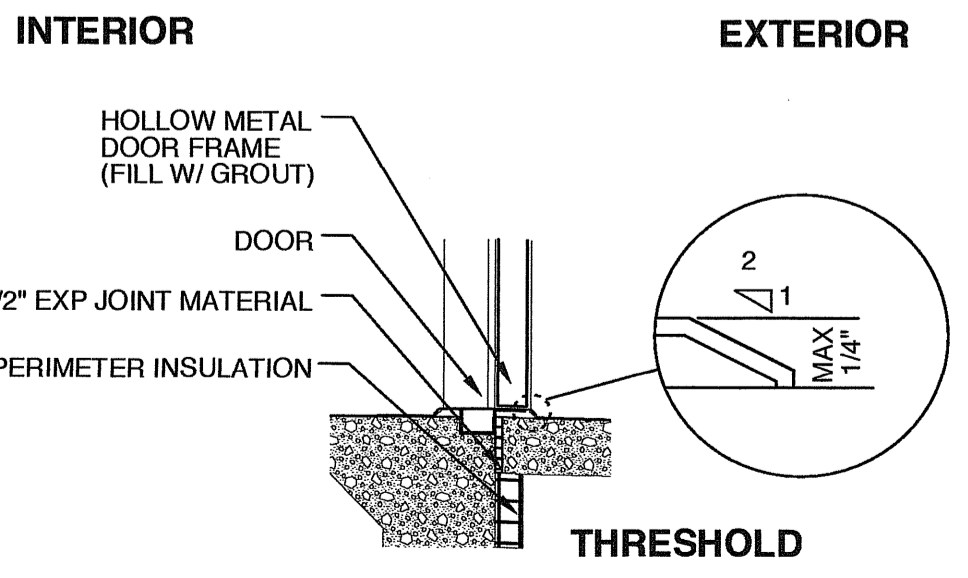
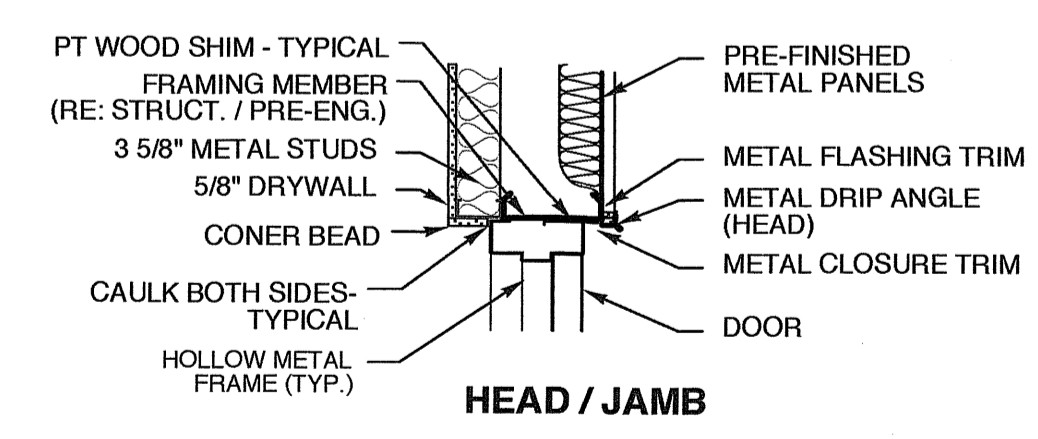
8 TYP. DOOR LOCATION
SCALE: 1/4" = 1'-0"



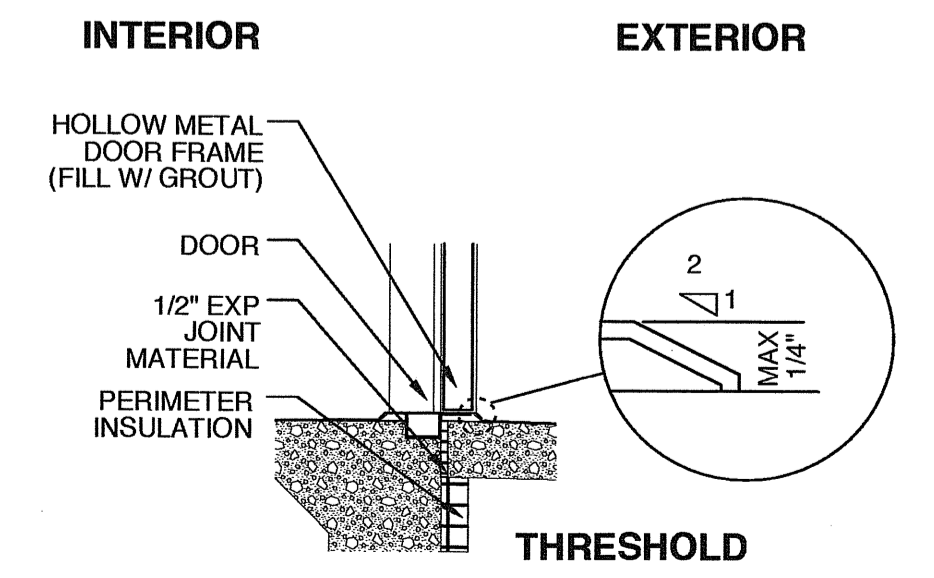
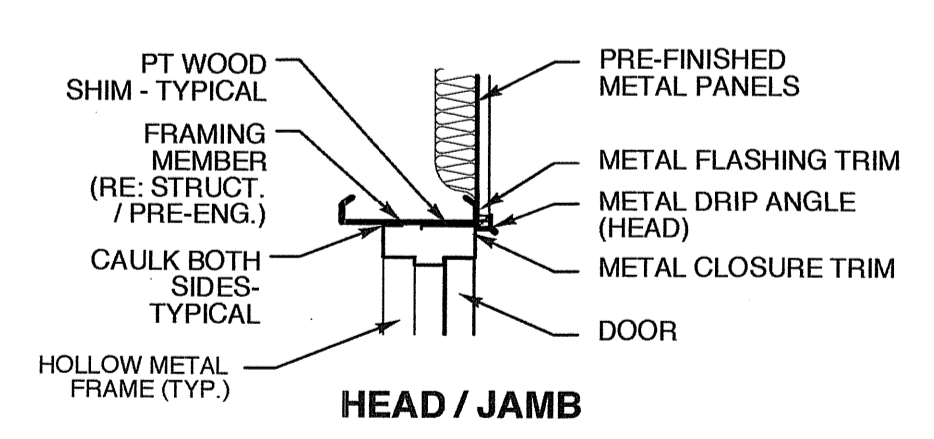
7 PARALLELL APPROACH FOR WINDOW
SCALE: 1/2" = 1'-0"



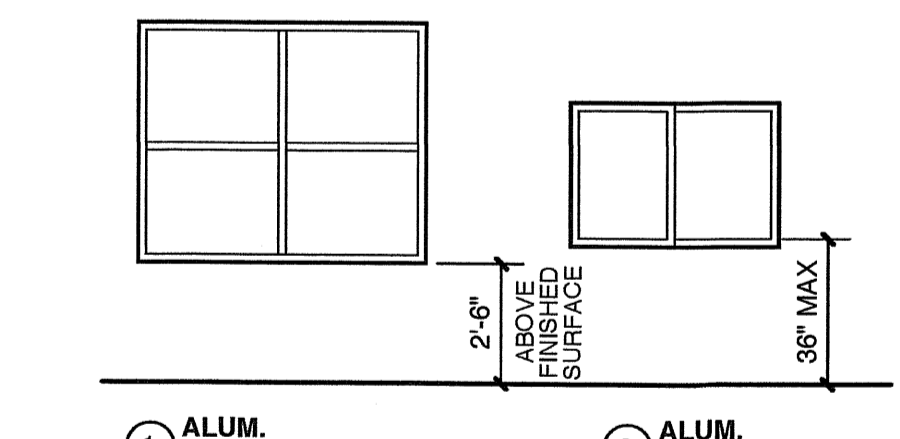
6 INT. SOLID WOOD DOOR
SCALE: 1/2" = 1'-0"



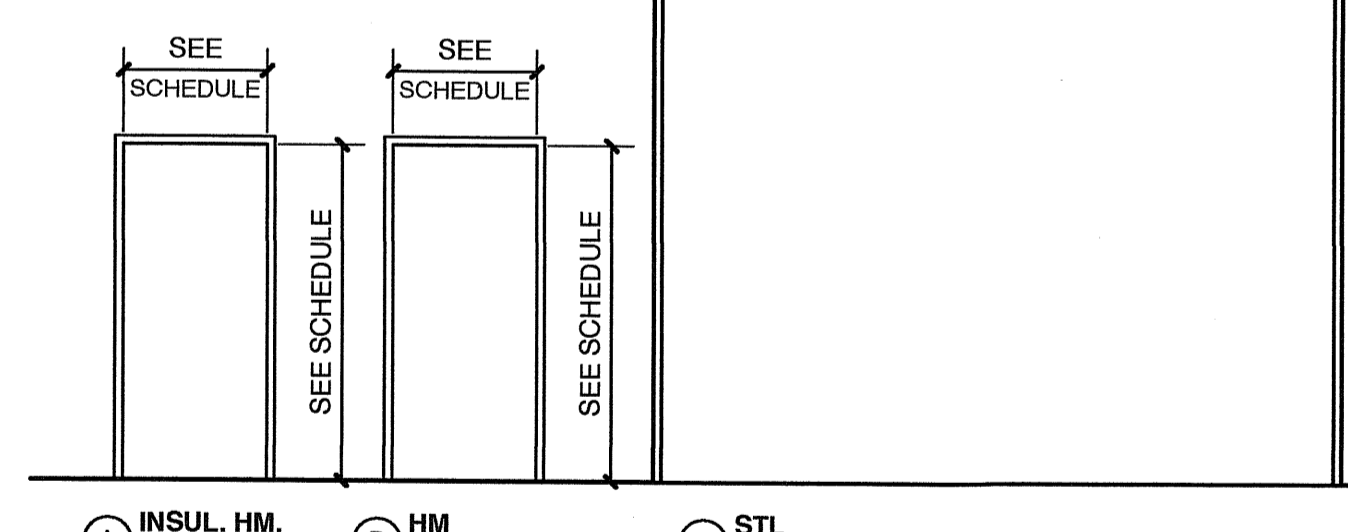
3 ALUMINUM STOREFRONT WINDOW DETAIL
SCALE: 3/4" = 1'-0"



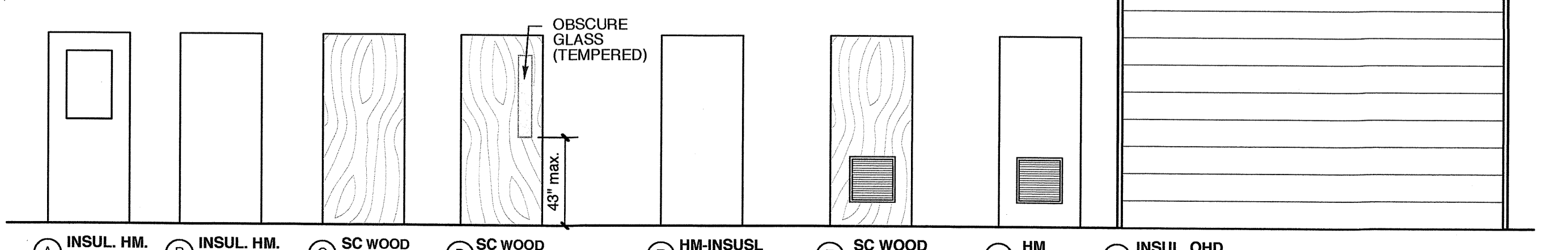
2 HOLLOW METAL DOOR FRAME DETAIL
SCALE: 3/4" = 1'-0"



5 WINDOW TYPES
SCALE: 1/4" = 1'-0"



4 DOOR FRAME TYPES
SCALE: 1/4" = 1'-0"



1 DOOR TYPES
SCALE: 1/4" = 1'-0"

**WEEKS
TURNER
ARCHITECTURE**

WEEKS TURNER ARCHITECTURE, PA
3305-109 Durham Drive
Raleigh, North Carolina 27603
919.779.9797 fax: 919.779.0826
www.weeksturner.com

Ruffy Peedin
COMMERCIAL DESIGN BUILD

5121 Kingdom Way, Suite 208
Raleigh, North Carolina 27607
919.459.8188
www.Ruffy-Peedin.com



PROJECT TITLE
G&D

JARCO DRIVE
FUQUAY-VARINA, NORTH CAROLINA

PROJECT NO.
1842

DRAWING TITLE
SCHEDULES

SHEET **7** OF **7**

A4

PLOT DATE **4/1/19**
REVISION **00/00/08**

This original sheet is 24" x 36"; other dimensions indicate it has been altered.
All information on this sheet is the property of Weeks Turner Architecture and may not be duplicated in whole or in part without written authorization from Weeks Turner Architecture. 2008 ©