

# G&D HAULING

## JARCO DRIVE, LOT#10

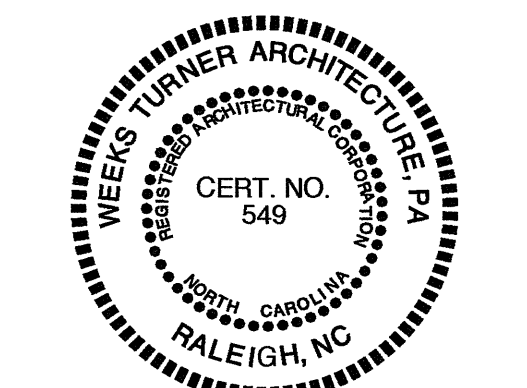
### FUQUAY-VARINA, NORTH CAROLINA

WEEKS  
TURNER  
ARCHITECTURE

WEEKS TURNER ARCHITECTURE, PA  
3305-109 Durham Drive  
Raleigh, North Carolina 27603  
919.779.9797 fax: 919.779.0826  
www.weeksturner.com

Ruffy Peedin  
COMMERCIAL DESIGN BUILD

5121 Kingdom Way, Suite 208  
Raleigh, North Carolina 27607  
919.453.8188  
www.Ruffy-Peedin.com



### NC DEPT. OF INSURANCE 2018 APPENDIX B

#### BUILDING CODE SUMMARY FOR ALL COMMERCIAL PROJECTS (EXCEPT 1 & 2-FAMILY DWELINGS AND TOWNHOUSES) (REPRODUCE THE FOLLOWING DATA ON THE BUILDING PLANS SHEET 1 OR 2)

**Name Of Project:** G&D HAULING  
**Address:** JARCO DRIVE, FUQUAY-VARINA  
**Zip Code:** 27526  
**Owner Or Authorized Agent:** Weeks Turner Architecture Phone: (919) 779-9797 E-mail: ganderson@weeksturner.com  
Owned By: \_\_\_\_\_  
Code Enforcement Jurisdiction: [ ] City/County [X] Private [ ] State  
[ ] Town - [X] County - HARNETT [ ] State

**LEAD DESIGN PROFESSIONAL:** WEEKS TURNER ARCHITECTURE, PA  
**Designer:** FIRM NAME LIC. # TELEPHONE E-MAIL  
Architectural: Weeks Turner Architecture 11075 (919) 779-9797 ganderson@weeksturner.com  
Civil: Redline Engineering Carlos S. Bagley 41318 (919) 776-6851 carlos.bagley@rienc.com  
Electrical: Burke Design Group Benjamin E Burke 22038 (919) 771-1916 ben@bdg-nc.com  
Fire Alarm: \_\_\_\_\_  
Plumbing: Burke Design Group Benjamin E Burke 22038 (919) 771-1916 ben@bdg-nc.com  
Mechanical: Burke Design Group Benjamin E Burke 22038 (919) 771-1916 ben@bdg-nc.com  
Sprinkler-Standpipe: \_\_\_\_\_  
Structural: Ross Linden Engineers PC Brian M. Ross 25539 (919) 832-5680 brian@rosslinden.com  
Retaining Walls \_\_\_\_\_  
Other: \_\_\_\_\_

**2018 NC BUILDING CODE:** [X] New Building [ ] Shell/Core [ ] 1st Time Interior Completions  
[ ] Addition [ ] Phased Construction - Shell Core  
**2018 NC EXISTING BUILDING CODE:** [ ] Prescriptive [ ] Alteration Level I [ ] Historic Property  
[ ] Repair [ ] Alteration Level II [ ] Change of Use  
[ ] Chapter 14 [ ] Alteration Level III

CONSTRUCTED: (date) \_\_\_\_\_ CURRENT OCCUPANCY(S) (Ch. 3): \_\_\_\_\_  
RENOVATED: (date) \_\_\_\_\_ PROPOSED OCCUPANCY(S) (Ch. 3): B E S I

**OCCUPANCY CATEGORY** (Table 1604.5): Current: II Proposed: II

**BASIC BUILDING DATA**  
**CONSTRUCTION TYPE:** [ ] I-A [ ] I-B [ ] I-C [ ] I-D [ ] I-E [ ] I-F [ ] I-G [ ] I-H [ ] I-I [ ] I-J [ ] I-K [ ] I-L [ ] I-M [ ] I-N [ ] I-O [ ] I-P [ ] I-Q [ ] I-R [ ] I-S [ ] I-T [ ] I-U [ ] I-V [ ] I-W [ ] I-X [ ] I-Y [ ] I-Z [ ] II-A [ ] II-B [ ] II-C [ ] II-D [ ] II-E [ ] II-F [ ] II-G [ ] II-H [ ] II-I [ ] II-J [ ] II-K [ ] II-L [ ] II-M [ ] II-N [ ] II-O [ ] II-P [ ] II-Q [ ] II-R [ ] II-S [ ] II-T [ ] II-U [ ] II-V [ ] II-W [ ] II-X [ ] II-Y [ ] II-Z [ ] III-A [ ] III-B [ ] III-C [ ] III-D [ ] III-E [ ] III-F [ ] III-G [ ] III-H [ ] III-I [ ] III-J [ ] III-K [ ] III-L [ ] III-M [ ] III-N [ ] III-O [ ] III-P [ ] III-Q [ ] III-R [ ] III-S [ ] III-T [ ] III-U [ ] III-V [ ] III-W [ ] III-X [ ] III-Y [ ] III-Z [ ] IV-A [ ] IV-B [ ] IV-C [ ] IV-D [ ] IV-E [ ] IV-F [ ] IV-G [ ] IV-H [ ] IV-I [ ] IV-J [ ] IV-K [ ] IV-L [ ] IV-M [ ] IV-N [ ] IV-O [ ] IV-P [ ] IV-Q [ ] IV-R [ ] IV-S [ ] IV-T [ ] IV-U [ ] IV-V [ ] IV-W [ ] IV-X [ ] IV-Y [ ] IV-Z [ ] V-A [ ] V-B [ ] V-C [ ] V-D [ ] V-E [ ] V-F [ ] V-G [ ] V-H [ ] V-I [ ] V-J [ ] V-K [ ] V-L [ ] V-M [ ] V-N [ ] V-O [ ] V-P [ ] V-Q [ ] V-R [ ] V-S [ ] V-T [ ] V-U [ ] V-V [ ] V-W [ ] V-X [ ] V-Y [ ] V-Z [ ] VI-A [ ] VI-B [ ] VI-C [ ] VI-D [ ] VI-E [ ] VI-F [ ] VI-G [ ] VI-H [ ] VI-I [ ] VI-J [ ] VI-K [ ] VI-L [ ] VI-M [ ] VI-N [ ] VI-O [ ] VI-P [ ] VI-Q [ ] VI-R [ ] VI-S [ ] VI-T [ ] VI-U [ ] VI-V [ ] VI-W [ ] VI-X [ ] VI-Y [ ] VI-Z [ ] VII-A [ ] VII-B [ ] VII-C [ ] VII-D [ ] VII-E [ ] VII-F [ ] VII-G [ ] VII-H [ ] VII-I [ ] VII-J [ ] VII-K [ ] VII-L [ ] VII-M [ ] VII-N [ ] VII-O [ ] VII-P [ ] VII-Q [ ] VII-R [ ] VII-S [ ] VII-T [ ] VII-U [ ] VII-V [ ] VII-W [ ] VII-X [ ] VII-Y [ ] VII-Z [ ] VIII-A [ ] VIII-B [ ] VIII-C [ ] VIII-D [ ] VIII-E [ ] VIII-F [ ] VIII-G [ ] VIII-H [ ] VIII-I [ ] VIII-J [ ] VIII-K [ ] VIII-L [ ] VIII-M [ ] VIII-N [ ] VIII-O [ ] VIII-P [ ] VIII-Q [ ] VIII-R [ ] VIII-S [ ] VIII-T [ ] VIII-U [ ] VIII-V [ ] VIII-W [ ] VIII-X [ ] VIII-Y [ ] VIII-Z [ ] IX-A [ ] IX-B [ ] IX-C [ ] IX-D [ ] IX-E [ ] IX-F [ ] IX-G [ ] IX-H [ ] IX-I [ ] IX-J [ ] IX-K [ ] IX-L [ ] IX-M [ ] IX-N [ ] IX-O [ ] IX-P [ ] IX-Q [ ] IX-R [ ] IX-S [ ] IX-T [ ] IX-U [ ] IX-V [ ] IX-W [ ] IX-X [ ] IX-Y [ ] IX-Z [ ] X-A [ ] X-B [ ] X-C [ ] X-D [ ] X-E [ ] X-F [ ] X-G [ ] X-H [ ] X-I [ ] X-J [ ] X-K [ ] X-L [ ] X-M [ ] X-N [ ] X-O [ ] X-P [ ] X-Q [ ] X-R [ ] X-S [ ] X-T [ ] X-U [ ] X-V [ ] X-W [ ] X-X [ ] X-Y [ ] X-Z [ ] XI-A [ ] XI-B [ ] XI-C [ ] XI-D [ ] XI-E [ ] XI-F [ ] XI-G [ ] XI-H [ ] XI-I [ ] XI-J [ ] XI-K [ ] XI-L [ ] XI-M [ ] XI-N [ ] XI-O [ ] XI-P [ ] XI-Q [ ] XI-R [ ] XI-S [ ] XI-T [ ] XI-U [ ] XI-V [ ] XI-W [ ] XI-X [ ] XI-Y [ ] XI-Z [ ] XII-A [ ] XII-B [ ] XII-C [ ] XII-D [ ] XII-E [ ] XII-F [ ] XII-G [ ] XII-H [ ] XII-I [ ] XII-J [ ] XII-K [ ] XII-L [ ] XII-M [ ] XII-N [ ] XII-O [ ] XII-P [ ] XII-Q [ ] XII-R [ ] XII-S [ ] XII-T [ ] XII-U [ ] XII-V [ ] XII-W [ ] XII-X [ ] XII-Y [ ] XII-Z [ ] XIII-A [ ] XIII-B [ ] XIII-C [ ] XIII-D [ ] XIII-E [ ] XIII-F [ ] XIII-G [ ] XIII-H [ ] XIII-I [ ] XIII-J [ ] XIII-K [ ] XIII-L [ ] XIII-M [ ] XIII-N [ ] XIII-O [ ] XIII-P [ ] XIII-Q [ ] XIII-R [ ] XIII-S [ ] XIII-T [ ] XIII-U [ ] XIII-V [ ] XIII-W [ ] XIII-X [ ] XIII-Y [ ] XIII-Z [ ] XIV-A [ ] XIV-B [ ] XIV-C [ ] XIV-D [ ] XIV-E [ ] XIV-F [ ] XIV-G [ ] XIV-H [ ] XIV-I [ ] XIV-J [ ] XIV-K [ ] XIV-L [ ] XIV-M [ ] XIV-N [ ] XIV-O [ ] XIV-P [ ] XIV-Q [ ] XIV-R [ ] XIV-S [ ] XIV-T [ ] XIV-U [ ] XIV-V [ ] XIV-W [ ] XIV-X [ ] XIV-Y [ ] XIV-Z [ ] XV-A [ ] XV-B [ ] XV-C [ ] XV-D [ ] XV-E [ ] XV-F [ ] XV-G [ ] XV-H [ ] XV-I [ ] XV-J [ ] XV-K [ ] XV-L [ ] XV-M [ ] XV-N [ ] XV-O [ ] XV-P [ ] XV-Q [ ] XV-R [ ] XV-S [ ] XV-T [ ] XV-U [ ] XV-V [ ] XV-W [ ] XV-X [ ] XV-Y [ ] XV-Z [ ] XVI-A [ ] XVI-B [ ] XVI-C [ ] XVI-D [ ] XVI-E [ ] XVI-F [ ] XVI-G [ ] XVI-H [ ] XVI-I [ ] XVI-J [ ] XVI-K [ ] XVI-L [ ] XVI-M [ ] XVI-N [ ] XVI-O [ ] XVI-P [ ] XVI-Q [ ] XVI-R [ ] XVI-S [ ] XVI-T [ ] XVI-U [ ] XVI-V [ ] XVI-W [ ] XVI-X [ ] XVI-Y [ ] XVI-Z [ ] XVII-A [ ] XVII-B [ ] XVII-C [ ] XVII-D [ ] XVII-E [ ] XVII-F [ ] XVII-G [ ] XVII-H [ ] XVII-I [ ] XVII-J [ ] XVII-K [ ] XVII-L [ ] XVII-M [ ] XVII-N [ ] XVII-O [ ] XVII-P [ ] XVII-Q [ ] XVII-R [ ] XVII-S [ ] XVII-T [ ] XVII-U [ ] XVII-V [ ] XVII-W [ ] XVII-X [ ] XVII-Y [ ] XVII-Z [ ] XVIII-A [ ] XVIII-B [ ] XVIII-C [ ] XVIII-D [ ] XVIII-E [ ] XVIII-F [ ] XVIII-G [ ] XVIII-H [ ] XVIII-I [ ] XVIII-J [ ] XVIII-K [ ] XVIII-L [ ] XVIII-M [ ] XVIII-N [ ] XVIII-O [ ] XVIII-P [ ] XVIII-Q [ ] XVIII-R [ ] XVIII-S [ ] XVIII-T [ ] XVIII-U [ ] XVIII-V [ ] XVIII-W [ ] XVIII-X [ ] XVIII-Y [ ] XVIII-Z [ ] XIX-A [ ] XIX-B [ ] XIX-C [ ] XIX-D [ ] XIX-E [ ] XIX-F [ ] XIX-G [ ] XIX-H [ ] XIX-I [ ] XIX-J [ ] XIX-K [ ] XIX-L [ ] XIX-M [ ] XIX-N [ ] XIX-O [ ] XIX-P [ ] XIX-Q [ ] XIX-R [ ] XIX-S [ ] XIX-T [ ] XIX-U [ ] XIX-V [ ] XIX-W [ ] XIX-X [ ] XIX-Y [ ] XIX-Z [ ] XX-A [ ] XX-B [ ] XX-C [ ] XX-D [ ] XX-E [ ] XX-F [ ] XX-G [ ] XX-H [ ] XX-I [ ] XX-J [ ] XX-K [ ] XX-L [ ] XX-M [ ] XX-N [ ] XX-O [ ] XX-P [ ] XX-Q [ ] XX-R [ ] XX-S [ ] XX-T [ ] XX-U [ ] XX-V [ ] XX-W [ ] XX-X [ ] XX-Y [ ] XX-Z [ ] XXI-A [ ] XXI-B [ ] XXI-C [ ] XXI-D [ ] XXI-E [ ] XXI-F [ ] XXI-G [ ] XXI-H [ ] XXI-I [ ] XXI-J [ ] XXI-K [ ] XXI-L [ ] XXI-M [ ] XXI-N [ ] XXI-O [ ] XXI-P [ ] XXI-Q [ ] XXI-R [ ] XXI-S [ ] XXI-T [ ] XXI-U [ ] XXI-V [ ] XXI-W [ ] XXI-X [ ] XXI-Y [ ] XXI-Z [ ] XXII-A [ ] XXII-B [ ] XXII-C [ ] XXII-D [ ] XXII-E [ ] XXII-F [ ] XXII-G [ ] XXII-H [ ] XXII-I [ ] XXII-J [ ] XXII-K [ ] XXII-L [ ] XXII-M [ ] XXII-N [ ] XXII-O [ ] XXII-P [ ] XXII-Q [ ] XXII-R [ ] XXII-S [ ] XXII-T [ ] XXII-U [ ] XXII-V [ ] XXII-W [ ] XXII-X [ ] XXII-Y [ ] XXII-Z [ ] XXIII-A [ ] XXIII-B [ ] XXIII-C [ ] XXIII-D [ ] XXIII-E [ ] XXIII-F [ ] XXIII-G [ ] XXIII-H [ ] XXIII-I [ ] XXIII-J [ ] XXIII-K [ ] XXIII-L [ ] XXIII-M [ ] XXIII-N [ ] XXIII-O [ ] XXIII-P [ ] XXIII-Q [ ] XXIII-R [ ] XXIII-S [ ] XXIII-T [ ] XXIII-U [ ] XXIII-V [ ] XXIII-W [ ] XXIII-X [ ] XXIII-Y [ ] XXIII-Z [ ] XXIV-A [ ] XXIV-B [ ] XXIV-C [ ] XXIV-D [ ] XXIV-E [ ] XXIV-F [ ] XXIV-G [ ] XXIV-H [ ] XXIV-I [ ] XXIV-J [ ] XXIV-K [ ] XXIV-L [ ] XXIV-M [ ] XXIV-N [ ] XXIV-O [ ] XXIV-P [ ] XXIV-Q [ ] XXIV-R [ ] XXIV-S [ ] XXIV-T [ ] XXIV-U [ ] XXIV-V [ ] XXIV-W [ ] XXIV-X [ ] XXIV-Y [ ] XXIV-Z [ ] XXV-A [ ] XXV-B [ ] XXV-C [ ] XXV-D [ ] XXV-E [ ] XXV-F [ ] XXV-G [ ] XXV-H [ ] XXV-I [ ] XXV-J [ ] XXV-K [ ] XXV-L [ ] XXV-M [ ] XXV-N [ ] XXV-O [ ] XXV-P [ ] XXV-Q [ ] XXV-R [ ] XXV-S [ ] XXV-T [ ] XXV-U [ ] XXV-V [ ] XXV-W [ ] XXV-X [ ] XXV-Y [ ] XXV-Z [ ] XXVI-A [ ] XXVI-B [ ] XXVI-C [ ] XXVI-D [ ] XXVI-E [ ] XXVI-F [ ] XXVI-G [ ] XXVI-H [ ] XXVI-I [ ] XXVI-J [ ] XXVI-K [ ] XXVI-L [ ] XXVI-M [ ] XXVI-N [ ] XXVI-O [ ] XXVI-P [ ] XXVI-Q [ ] XXVI-R [ ] XXVI-S [ ] XXVI-T [ ] XXVI-U [ ] XXVI-V [ ] XXVI-W [ ] XXVI-X [ ] XXVI-Y [ ] XXVI-Z [ ] XXVII-A [ ] XXVII-B [ ] XXVII-C [ ] XXVII-D [ ] XXVII-E [ ] XXVII-F [ ] XXVII-G [ ] XXVII-H [ ] XXVII-I [ ] XXVII-J [ ] XXVII-K [ ] XXVII-L [ ] XXVII-M [ ] XXVII-N [ ] XXVII-O [ ] XXVII-P [ ] XXVII-Q [ ] XXVII-R [ ] XXVII-S [ ] XXVII-T [ ] XXVII-U [ ] XXVII-V [ ] XXVII-W [ ] XXVII-X [ ] XXVII-Y [ ] XXVII-Z [ ] XXVIII-A [ ] XXVIII-B [ ] XXVIII-C [ ] XXVIII-D [ ] XXVIII-E [ ] XXVIII-F [ ] XXVIII-G [ ] XXVIII-H [ ] XXVIII-I [ ] XXVIII-J [ ] XXVIII-K [ ] XXVIII-L [ ] XXVIII-M [ ] XXVIII-N [ ] XXVIII-O [ ] XXVIII-P [ ] XXVIII-Q [ ] XXVIII-R [ ] XXVIII-S [ ] XXVIII-T [ ] XXVIII-U [ ] XXVIII-V [ ] XXVIII-W [ ] XXVIII-X [ ] XXVIII-Y [ ] XXVIII-Z [ ] XXIX-A [ ] XXIX-B [ ] XXIX-C [ ] XXIX-D [ ] XXIX-E [ ] XXIX-F [ ] XXIX-G [ ] XXIX-H [ ] XXIX-I [ ] XXIX-J [ ] XXIX-K [ ] XXIX-L [ ] XXIX-M [ ] XXIX-N [ ] XXIX-O [ ] XXIX-P [ ] XXIX-Q [ ] XXIX-R [ ] XXIX-S [ ] XXIX-T [ ] XXIX-U [ ] XXIX-V [ ] XXIX-W [ ] XXIX-X [ ] XXIX-Y [ ] XXIX-Z [ ] XXX-A [ ] XXX-B [ ] XXX-C [ ] XXX-D [ ] XXX-E [ ] XXX-F [ ] XXX-G [ ] XXX-H [ ] XXX-I [ ] XXX-J [ ] XXX-K [ ] XXX-L [ ] XXX-M [ ] XXX-N [ ] XXX-O [ ] XXX-P [ ] XXX-Q [ ] XXX-R [ ] XXX-S [ ] XXX-T [ ] XXX-U [ ] XXX-V [ ] XXX-W [ ] XXX-X [ ] XXX-Y [ ] XXX-Z [ ] XXXI-A [ ] XXXI-B [ ] XXXI-C [ ] XXXI-D [ ] XXXI-E [ ] XXXI-F [ ] XXXI-G [ ] XXXI-H [ ] XXXI-I [ ] XXXI-J [ ] XXXI-K [ ] XXXI-L [ ] XXXI-M [ ] XXXI-N [ ] XXXI-O [ ] XXXI-P [ ] XXXI-Q [ ] XXXI-R [ ] XXXI-S [ ] XXXI-T [ ] XXXI-U [ ] XXXI-V [ ] XXXI-W [ ] XXXI-X [ ] XXXI-Y [ ] XXXI-Z [ ] XXXII-A [ ] XXXII-B [ ] XXXII-C [ ] XXXII-D [ ] XXXII-E [ ] XXXII-F [ ] XXXII-G [ ] XXXII-H [ ] XXXII-I [ ] XXXII-J [ ] XXXII-K [ ] XXXII-L [ ] XXXII-M [ ] XXXII-N [ ] XXXII-O [ ] XXXII-P [ ] XXXII-Q [ ] XXXII-R [ ] XXXII-S [ ] XXXII-T [ ] XXXII-U [ ] XXXII-V [ ] XXXII-W [ ] XXXII-X [ ] XXXII-Y [ ] XXXII-Z [ ] XXXIII-A [ ] XXXIII-B [ ] XXXIII-C [ ] XXXIII-D [ ] XXXIII-E [ ] XXXIII-F [ ] XXXIII-G [ ] XXXIII-H [ ] XXXIII-I [ ] XXXIII-J [ ] XXXIII-K [ ] XXXIII-L [ ] XXXIII-M [ ] XXXIII-N [ ] XXXIII-O [ ] XXXIII-P [ ] XXXIII-Q [ ] XXXIII-R [ ] XXXIII-S [ ] XXXIII-T [ ] XXXIII-U [ ] XXXIII-V [ ] XXXIII-W [ ] XXXIII-X [ ] XXXIII-Y [ ] XXXIII-Z [ ] XXXIV-A [ ] XXXIV-B [ ] XXXIV-C [ ] XXXIV-D [ ] XXXIV-E [ ] XXXIV-F [ ] XXXIV-G [ ] XXXIV-H [ ] XXXIV-I [ ] XXXIV-J [ ] XXXIV-K [ ] XXXIV-L [ ] XXXIV-M [ ] XXXIV-N [ ] XXXIV-O [ ] XXXIV-P [ ] XXXIV-Q [ ] XXXIV-R [ ] XXXIV-S [ ] XXXIV-T [ ] XXXIV-U [ ] XXXIV-V [ ] XXXIV-W [ ] XXXIV-X [ ] XXXIV-Y [ ] XXXIV-Z [ ] XXXV-A [ ] XXXV-B [ ] XXXV-C [ ] XXXV-D [ ] XXXV-E [ ] XXXV-F [ ] XXXV-G [ ] XXXV-H [ ] XXXV-I [ ] XXXV-J [ ] XXXV-K [ ] XXXV-L [ ] XXXV-M [ ] XXXV-N [ ] XXXV-O [ ] XXXV-P [ ] XXXV-Q [ ] XXXV-R [ ] XXXV-S [ ] XXXV-T [ ] XXXV-U [ ] XXXV-V [ ] XXXV-W [ ] XXXV-X [ ] XXXV-Y [ ] XXXV-Z [ ] XXXVI-A [ ] XXXVI-B [ ] XXXVI-C [ ] XXXVI-D [ ] XXXVI-E [ ] XXXVI-F [ ] XXXVI-G [ ] XXXVI-H [ ] XXXVI-I [ ] XXXVI-J [ ] XXXVI-K [ ] XXXVI-L [ ] XXXVI-M [ ] XXXVI-N [ ] XXXVI-O [ ] XXXVI-P [ ] XXXVI-Q [ ] XXXVI-R [ ] XXXVI-S [ ] XXXVI-T [ ] XXXVI-U [ ] XXXVI-V [ ] XXXVI-W [ ] XXXVI-X [ ] XXXVI-Y [ ] XXXVI-Z [ ] XXXVII-A [ ] XXXVII-B [ ] XXXVII-C [ ] XXXVII-D [ ] XXXVII-E [ ] XXXVII-F [ ] XXXVII-G [ ] XXXVII-H [ ] XXXVII-I [ ] XXXVII-J [ ] XXXVII-K [ ] XXXVII-L [ ] XXXVII-M [ ] XXXVII-N [ ] XXXVII-O [ ] XXXVII-P [ ] XXXVII-Q [ ] XXXVII-R [ ] XXXVII-S [ ] XXXVII-T [ ] XXXVII-U [ ] XXXVII-V [ ] XXXVII-W [ ] XXXVII-X [ ] XXXVII-Y [ ] XXXVII-Z [ ] XXXVIII-A [ ] XXXVIII-B [ ] XXXVIII-C [ ] XXXVIII-D [ ] XXXVIII-E [ ] XXXVIII-F [ ] XXXVIII-G [ ] XXXVIII-H [ ] XXXVIII-I [ ] XXXVIII-J [ ] XXXVIII-K [ ] XXXVIII-L [ ] XXXVIII-M [ ] XXXVIII-N [ ] XXXVIII-O [ ] XXXVIII-P [ ] XXXVIII-Q [ ] XXXVIII-R [ ] XXXVIII-S [ ] XXXVIII-T [ ] XXXVIII-U [ ] XXXVIII-V [ ] XXXVIII-W [ ] XXXVIII-X [ ] XXXVIII-Y [ ] XXXVIII-Z [ ] XXXIX-A [ ] XXXIX-B [ ] XXXIX-C [ ] XXXIX-D [ ] XXXIX-E [ ] XXXIX-F [ ] XXXIX-G [ ] XXXIX-H [ ] XXXIX-I [ ] XXXIX-J [ ] XXXIX-K [ ] XXXIX-L [ ] XXXIX-M [ ] XXXIX-N [ ] XXXIX-O [ ] XXXIX-P [ ] XXXIX-Q [ ] XXXIX-R [ ] XXXIX-S [ ] XXXIX-T [ ] XXXIX-U [ ] XXXIX-V [ ] XXXIX-W [ ] XXXIX-X [ ] XXXIX-Y [ ] XXXIX-Z [ ] XXXX-A [ ] XXXX-B [ ] XXXX-C [ ] XXXX-D [ ] XXXX-E [ ] XXXX-F [ ] XXXX-G [ ] XXXX-H [ ] XXXX-I [ ] XXXX-J [ ] XXXX-K [ ] XXXX-L [ ] XXXX-M [ ] XXXX-N [ ] XXXX-O [ ] XXXX-P [ ] XXXX-Q [ ] XXXX-R [ ] XXXX-S [ ] XXXX-T [ ] XXXX-U [ ] XXXX-V [ ] XXXX-W [ ] XXXX-X [ ] XXXX-Y [ ] XXXX-Z [ ] XXXXI-A [ ] XXXXI-B [ ] XXXXI-C [ ] XXXXI-D [ ] XXXXI-E [ ] XXXXI-F [ ] XXXXI-G [ ] XXXXI-H [ ] XXXXI-I [ ] XXXXI-J [ ] XXXXI-K [ ] XXXXI-L [ ] XXXXI-M [ ] XXXXI-N [ ] XXXXI-O [ ] XXXXI-P [ ] XXXXI-Q [ ] XXXXI-R [ ] XXXXI-S [ ] XXXXI-T [ ] XXXXI-U [ ] XXXXI-V [ ] XXXXI-W [ ] XXXXI-X [ ] XXXXI-Y [ ] XXXXI-Z [ ] XXXXII-A [ ] XXXXII-B [ ] XXXXII-C [ ] XXXXII-D [ ] XXXXII-E [ ] XXXXII-F [ ] XXXXII-G [ ] XXXXII-H [ ] XXXXII-I [ ] XXXXII-J [ ] XXXXII-K [ ] XXXXII-L [ ] XXXXII-M [ ] XXXXII-N [ ] XXXXII-O [ ] XXXXII-P [ ] XXXXII-Q [ ] XXXXII-R [ ] XXXXII-S [ ] XXXXII-T [ ] XXXXII-U [ ] XXXXII-V [ ] XXXXII-W [ ] XXXXII-X [ ] XXXXII-Y [ ] XXXXII-Z [ ] XXXXIII-A [ ] XXXXIII-B [ ] XXXXIII-C [ ] XXXXIII-D [ ] XXXXIII-E [ ] XXXXIII-F [ ] XXXXIII-G [ ] XXXXIII-H [ ] XXXXIII-I [ ] XXXXIII-J [ ] XXXXIII-K [ ] XXXXIII-L [ ] XXXXIII-M [ ] XXXXIII-N [ ] XXXXIII-O [ ] XXXXIII-P [ ] XXXXIII-Q [ ] XXXXIII-R [ ] XXXXIII-S [ ] XXXXIII-T [ ] XXXXIII-U [ ] XXXXIII-V [ ] XXXXIII-W [ ] XXXXIII-X [ ] XXXXIII-Y [ ] XXXXIII-Z [ ] XXXXIV-A [ ] XXXXIV-B [ ] XXXXIV-C [ ] XXXXIV-D [ ] XXXXIV-E [ ] XXXXIV-F [ ] XXXXIV-G [ ] XXXXIV-H [ ] XXXXIV-I [ ] XXXXIV-J [ ] XXXXIV-K [ ] XXXXIV-L [ ] XXXXIV-M [ ] XXXXIV-N [ ] XXXXIV-O [ ] XXXXIV-P [ ] XXXXIV-Q [ ] XXXXIV-R [ ] XXXXIV-S [ ] XXXXIV-T [ ] XXXXIV-U [ ] XXXXIV-V [ ] XXXXIV-W [ ] XXXXIV-X [ ] XXXXIV-Y [ ] XXXXIV-Z [ ] XXXXV-A [ ] XXXXV-B [ ] XXXXV-C [ ] XXXXV-D [ ] XXXXV-E [ ] XXXXV-F [ ] XXXXV-G [ ] XXXXV-H [ ] XXXXV-I [ ] XXXXV-J [ ] XXXXV-K [ ] XXXXV-L [ ] XXXXV-M [ ] XXXXV-N [ ] XXXXV-O [ ] XXXXV-P [ ] XXXXV-Q [ ] XXXXV-R [ ] XXXXV-S [ ] XXXXV-T [ ] XXXXV-U [ ] XXXXV-V [ ] XXXXV-W [ ] XXXXV-X [ ] XXXXV-Y [ ] XXXXV-Z [ ] XXXXVI-A [ ] XXXXVI-B [ ] XXXXVI-C [ ] XXXXVI-D [ ] XXXXVI-E [ ] XXXXVI-F [ ] XXXXVI-G [ ] XXXXVI-H [ ] XXXXVI-I [ ] XXXXVI-J [ ] XXXXVI-K [ ] XXXXVI-L [ ] XXXXVI-M [ ] XXXXVI-N [ ] XXXXVI-O [ ] XXXXVI-P [ ] XXXXVI-Q [ ] XXXXVI-R [ ] XXXXVI-S [ ] XXXXVI-T [ ] XXXXVI-U [ ] XXXXVI-V [ ] XXXXVI-W [ ] XXXXVI-X [ ] XXXXVI-Y [ ] XXXXVI-Z [ ] XXXXVII-A [ ] XXXXVII-B [ ] XXXXVII-C [ ] XXXXVII-D [ ] XXXXVII-E [ ] XXXXVII-F [ ] XXXXVII-G [ ] XXXXVII-H [ ] XXXXVII-I [ ] XXXXVII-J [ ] XXXXVII-K [ ] XXXXVII-L [ ] XXXXVII-M [ ] XXXXVII-N [ ] XXXXVII-O [ ] XXXXVII-P [ ] XXXXVII-Q [ ] XXXXVII-R [ ] XXXXVII-S [ ] XXXXVII-T [ ] XXXXVII-U [ ] XXXXVII-V [ ] XXXXVII-W [ ] XXXXVII-X [ ] XXXXVII-Y [ ] XXXXVII-Z [ ] XXXXVIII-A [ ] XXXXVIII-B [ ] XXXXVIII-C [ ] XXXXVIII-D [ ] XXXXVIII-E [ ] XXXXVIII-F [ ] XXXXVIII-G [ ] XXXXVIII-H [ ] XXXXVIII-I [ ] XXXXVIII-J [ ] XXXXVIII-K [ ] XXXXVIII-L [ ] XXXXVIII-M [ ] XXXXVIII-N [ ] XXXXVIII-O [ ] XXXXVIII-P [ ] XXXXVIII-Q [ ] XXXXVIII-R [ ] XXXXVIII-S [ ] XXXXVIII-T [ ] XXXXVIII-U [ ] XXXXVIII-V [ ] XXXXVIII-W [ ] XXXXVIII-X [ ] XXXXVIII-Y [ ] XXXXVIII-Z [ ] XXXXIX-A [ ] XXXXIX-B [ ] XXXXIX-C [ ] XXXXIX-D [ ] XXXXIX-E [ ] XXXXIX-F [ ] XXXXIX-G [ ] XXXXIX-H [ ] XXXXIX-I [ ] XXXXIX-J [ ] XXXXIX-K [ ] XXXXIX-L [ ] XXXXIX-M [ ] XXXXIX-N [ ] XXXXIX-O [ ] XXXXIX-P [ ] XXXXIX-Q [ ] XXXXIX-R [ ] XXXXIX-S [ ] XXXXIX-T [ ] XXXXIX-U [ ] XXXXIX-V [ ] XXXXIX-W [ ] XXXXIX-X [ ] XXXXIX-Y [ ] XXXXIX-Z [ ] XXXXX-A [ ] XXXXX-B [ ] XXXXX-C [ ] XXXXX-D [ ] XXXXX-E [ ] XXXXX-F [ ] XXXXX-G [ ] XXXXX-H [ ] XXXXX-I [ ] XXXXX-J [ ] XXXXX-K [ ] XXXXX-L [ ] XXXXX-M [ ] XXXXX-N [ ] XXXXX-O [ ] XXXXX-P [ ] XXXXX-Q [ ] XXXXX-R [ ] XXXXX-S [ ] XXXXX-T [ ] XXXXX-U [ ] XXXXX-V [ ] XXXXX-W [ ] XXXXX-X [ ] XXXXX-Y [ ] XXXXX-Z [ ]

GROSS BUILDING AREA	EXISTING (SF)	NEW (SF)	SUB-TOTAL	TENANT
3RD FLOOR	---	---	---	---
2ND FLOOR	---	---	---	---
MEZZANINE	---	---	---	---
1ST FLOOR	---	6,825	6,825	---
BASEMENT	---	---	---	---
<b>TOTAL</b>	---	---	6,825	---

**ALLOWABLE AREA:**  
**PRIMARY OCCUPANCY:** [ ] ASSEMBLY [ ] BUSINESS [ ] EDUCATIONAL [ ] FACTORY [ ] HIGH-HAZARD [ ] INSTITUTIONAL [ ] M-1 Moderate [ ] M-2 Low [ ] H-1 Detonate [ ] H-2 Deflagrate [ ] H-3 Combust [ ] H-4 Health [ ] H-5 HPM [ ] Condition 1 [ ] Condition 2 [ ] Condition 3 [ ] Condition 4 [ ] Condition 5 [ ] Condition 6 [ ] R-1 [ ] R-2 [ ] R-3 [ ] R-4 [ ] S-1 Moderate [ ] S-2 Low [ ] HIGH-PILED [ ] PARKING GARAGE [ ] OPEN [ ] ENCLOSED [ ] REPAIR GARAGE [ ] UTILITY & MISCELLANEOUS

**ACCESSORY OCCUPANCY CLASSIFICATION(S):** \_\_\_\_\_  
**INCIDENTAL USES (Table 509):** \_\_\_\_\_  
**SPECIAL USES (Chapter 4 - List Code Sections):** \_\_\_\_\_  
**SPECIAL PROVISIONS (Chapter 5 - List Code Sections):** \_\_\_\_\_  
**MIXED OCCUPANCY:** Select one Separation: Select one Exception: \_\_\_\_\_  
Actual Area of Occupancy A + Actual Area of Occupancy B / Allowable Area of Occupancy A + Allowable Area of Occupancy B ≤ 1

STORY NO.	DESCRIP AND USE	BLDG AREA PER STORY (ACTUAL)	(B) TABLE 506.2: AREA FOR OPEN SPACE INCREASE 1,9		ALLOWABLE AREA OR UNLIMITED 2,9
			(A)	(C)	
1	OFFICE (B)	2,356	23,000	17,250	40,250
1	REPAIR GARAGE (S-1)	4,469	17,500	13,125	30,625
1	OPEN CANOPY (S-1)	1,340	17,500	13,125	30,625

1. Frontage Area Increases From Section 506.2 Are Computed Thus:  
A. Perimeter Which Fronts A Public Way Or Open Space Having 20 Ft Min. Width = \_\_\_\_\_ (F).  
B. Total Building Perimeter = \_\_\_\_\_ (P).  
C. Ratio (F/P) = \_\_\_\_\_ (F/P).  
D. W = Minimum Width Of Public Way = \_\_\_\_\_ (W).  
2. Unlimited area applicable under conditions of Section 507.  
3. Max. Building Area = Total No. Of Stories In The Building X D (maximum 3 stories) (506.2).  
4. The Maximum Area Of Open Parking Garages Must Comply With 406.5.4. The Maximum Area Of Air Traffic Control Towers Must Comply With 412.3.1.  
5. Frontage increase is based on the unsprinklered area value in Table 506.2.

ALLOWABLE HEIGHT	ALLOWABLE (TABLE 503)	SHOWN ON PLANS	CODE REFERENCE
BUILDING HEIGHT IN FEET	55 (FT)	23 (FT)	---
BUILDING HEIGHT IN STORIES	2 (STORIES)	1 (STORIES)	---

1. Provide code reference if the "Shown on Plans" quantity is not based on Table 504.3 or 504.4.

### NC DEPT. OF INSURANCE 2018 APPENDIX B BUILDING CODE SUMMARY CONTINUED

#### FIRE PROTECTION REQUIREMENTS

BUILDING ELEMENT	FIRE SEPN DIST. (FT)	RATING REQ'D	RATING PROV'D (W/ REDUCTION)	DETAIL # AND SHEET #	DES. # FOR RATED ASSY	DES. # FOR RATED PENETN	DES. # FOR RATED JOINTS
<b>STRUCTURAL FRAME, INCLUDING COLUMNS, GIRDERS, TRUSSES</b>	---	0	0	---	---	---	---
<b>BEARING WALLS</b>	---	---	---	---	---	---	---
<b>EXTERIOR</b>	---	---	---	---	---	---	---
NORTH	---	0	0	---	---	---	---
EAST	---	0	0	---	---	---	---
WEST	---	0	0	---	---	---	---
SOUTH	---	0	0	---	---	---	---
<b>INTERIOR</b>	---	---	---	---	---	---	---
<b>NONBEARING WALLS AND PARTITIONS</b>	---	---	---	---	---	---	---
<b>EXTERIOR</b>	---	---	---	---	---	---	---
NORTH	N/A	0	0	---	---	---	---
EAST	N/A	0	0	---	---	---	---
WEST	N/A	0	0	---	---	---	---
SOUTH	N/A	0	0	---	---	---	---
<b>INTERIOR WALL &amp; PARTITIONS</b>	---	---	---	---	---	---	---
<b>FLOOR CONSTRUCTION, INCLUDING SUPPORTING BEAMS AND JOISTS</b>	---	---	---	---	---	---	---
FLOOR CEILING ASSEMBLY	---	0	0	---	---	---	---
COLUMNS SUPPORTING FLOORS	---	0	0	---	---	---	---
<b>ROOF CONSTRUCTION, INCLUDING SUPPORTING BEAMS AND JOISTS</b>	---	---	---	---	---	---	---
ROOF CEILING ASSEMBLY	---	0	0	---	---	---	---
COLUMNS SUPPORTING ROOF	---	0	0	---	---	---	---
SHAFTS ENCLOSURES-EXIT	---	0	0	---	---	---	---
SHAFTS ENCLOSURES-OTHER	---	0	0	---	---	---	---
CORRIDOR SEPARATION	---	3	3	4/A3	U419	---	---
OCCUPANCY/FIRE BARRIER SEPARATION	---	0	0	---	---	---	---
PARTY/FIRE WALL SEPARATION	---	0	0	---	---	---	---
SMOKE BARRIER SEPARATION	---	0	0	---	---	---	---
SMOKE PARTITION	---	0	0	---	---	---	---
TENANT/DWELLING UNIT/SLEEPING UNIT SEPARATION	---	0	0	---	---	---	---
INCIDENTAL USE SEPARATION	---	0	0	---	---	---	---

\*INDICATE SECTION NO. PERMITTING REDUCTION

#### PERCENTAGE OF WALL OPENING CALCULATIONS

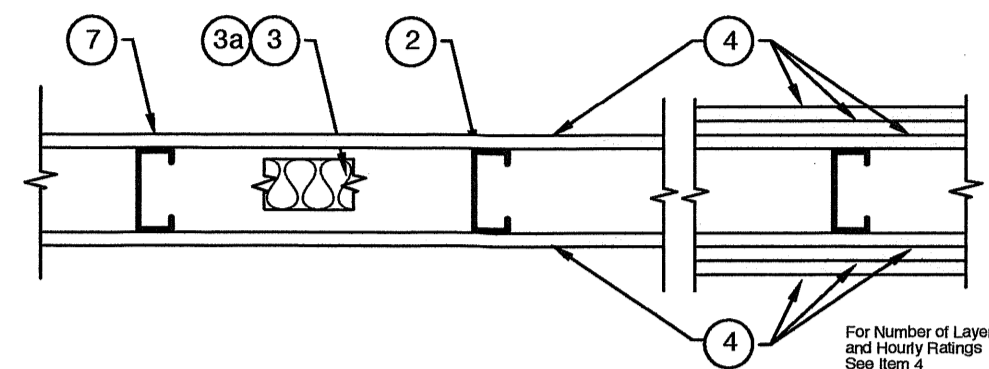
FIRE SEPARATION DISTANCE (FEET) FROM PROPERTY LINES	DEGREE OF OPENINGS PROTECTION (TABLE 705.8)	ALLOWABLE AREA (%)	ACTUAL SHOWN ON PLANS (%)
>30'	UP, NS	NO LIMIT	---
>30'	UP, NS	NO LIMIT	---
>30'	UP, NS	NO LIMIT	---
>30'	UP, NS	NO LIMIT	---

#### LIFE SAFETY SYSTEM REQUIREMENTS

**EMERGENCY LIGHTING:** [X] YES [ ] NO SMOKE DETECTION SYSTEMS: [ ] YES [X] NO  
**EXIT SIGNS:** [ ] YES [X] NO PANIC HARDWARE: [ ] YES [X] NO  
**FIRE ALARM:** [ ] YES [X] NO

**LIFE SAFETY PLAN REQUIREMENTS SHEET NUMBER A0.2**  
[X] FIRE AND/OR SMOKE RATED WALL LOCATIONS (CHAPTER 7)  
[X] ASSUMED AND REAL PROPERTY LINE LOCATIONS (IF NOT ON SITE PLAN)  
[X] EXTERIOR WALL OPENING AREA WITH RESPECT TO DISTANCE TO ASSUMED PROPERTY LINES (705.8)  
[X] OCCUPANCY USE FOR EACH AREA AS IT RELATES TO OCCUPANT LOAD CALCULATION (TABLE 1006.1.2)  
[X] OCCUPANT LOADS FOR EACH AREA  
[X] EXIT ACCESS TRAVEL DISTANCES (1017)  
[X] COMMON PATH OF TRAVEL DISTANCES (1006.2.1 & 1006.3.2(1))  
[X] DEAD END LENGTHS (1020.4)  
[X] CLEAR EXIT WIDTHS FOR EACH EXIT DOOR  
[X] MAXIMUM CALCULATED OCCUPANT LOAD CAPACITY EACH EXIT DOOR CAN ACCOMMODATE BASED ON EGRESS WIDTH (1005.3)  
[X] ACTUAL OCCUPANT LOAD FOR EACH DOOR  
[X] A SEPARATE SCHEMATIC PLAN INDICATING WHERE FIRE RATED FLOOR/CEILING AND/OR ROOF STRUCTURE IS PROVIDED FOR PURPOSES OF OCCUPANCY SEPARATION  
[X] LOCATION OF EMERGENCY ESCAPE WINDOWS (1010.1.10)  
[X] LOCATION OF DOORS WITH DELAYED EGRESS LOCKS AND THE AMOUNT OF THE DELAY (1010.1.9.7)  
[X] LOCATION OF DOORS WITH ELECTROMAGNETIC EGRESS LOCKS (1010.1.9.9)  
[X] LOCATION OF DOORS EQUIPPED WITH HOLD-OPEN DEVICES  
[X] LOCATION OF EMERGENCY ESCAPE WINDOWS (1030)  
[X] THE SQUARE FOOTAGE OF EACH FIRE AREA (202)  
[X] THE SQUARE FOOTAGE OF EACH SMOKE COMPARTMENT FOR OCCUPANCY CLASSIFICATION I-2 (407.5)  
[X] NOTE ANY CODE EXCEPTIONS ON TABLE NOTES THAT MAY HAVE BEEN UTILIZED REGARDING THE ITEMS ABOVE

**Design No. U419**  
Nonbearing Wall Ratings 1, 2, 3 or 4 Hr  
(See Items 3 & 4)



1. Floor and Ceiling Runners — (Not shown) — Channel shaped, fabricated from min 25 MSG (min 20 MSG when Item 4A is used) corrosion-protected steel, min width to accommodate stud size, with min 1 in. long legs, attached to floor and ceiling with fasteners 24 in. OC max.
2. Steel Studs — Channel shaped, fabricated from min 25 MSG (min 20 MSG when Item 4A is used) corrosion-protected steel, min width as indicated under Item 4, min 1-1/4 in. flanges and 1/4 in. return, spaced a max of 24 in. OC. Studs to be cut 3/8 to 3/4 in. less than assembly height.
3. Batts and Blankets\* — (Required as indicated under Item 4) — Mineral wool batts, friction fitted between studs and runners. Min nom thickness as indicated under Item 4. See Batts and Blankets (BKNV or BZJZ) Categories for names of Classified companies.
- 3A. Batts and Blankets\* — (Optional) — Placed in stud cavities, any glass fiber or mineral wool insulation bearing the UL Classification Marking as to Surface Burning Characteristics and/or Fire Resistance. See Batts and Blankets (BKNV or BZJZ) Categories for names of Classified companies.
4. Gypsum Board\* — Gypsum panels with beveled, square or tapered edges, applied vertically or horizontally. Vertical joints centered over studs and staggered one stud cavity on opposite sides of studs. Vertical joints in adjacent layers (multilayer systems) staggered one stud cavity. Horizontal joints need not be backed by steel framing. Horizontal edge joints and horizontal butt joints on opposite sides of studs need not be staggered. Horizontal edge joints and horizontal butt joints in adjacent layers (multilayer systems) staggered a min of 12 in. The thickness and number of layers for the 1 hr, 2 hr, 3 hr and 4 hr ratings are as follows:

**Wallboard Protection on Each Side of Wall**

Rating	Min Stud Depth	No. of Layers & Thkns of Panel	Min Thkns of Insulation (Item 3)
1	3-1/2	1 layer, 5/8 in. thick	Optional
1	2-1/2	1 layer, 1/2 in. thick	1-1/2 in.
1	1-5/8	1 layer, 3/4 in. thick	Optional
2	1-5/8	2 layers, 1/2 in. thick	Optional
2	1-5/8	2 layers, 5/8 in. thick	Optional
2	3-1/2	1 layer, 3/4 in. thick	3 in.
3	1-5/8	3 layers, 1/2 in. thick	Optional
3	1-5/8	2 layers, 3/4 in. thick	Optional
3	1-5/8	3 layers, 5/8 in. thick	Optional
4	1-5/8	4 layers, 5/8 in. thick	Optional
4	1-5/8	4 layers, 1/2 in. thick	Optional
4	2-1/2	2 layers, 3/4 in. thick	2 in.

CANADIAN GYPSUM COMPANY — 1/2 in. thick Type C, IP-X2 or IPC-AR; WRC, 5/8 in. thick Type AR, C, IP-AR, IP-X1, IP-X2, IPC-AR, SCX, SHX, WRX, WRC or 3/4 in. thick Type IP-X3, ULTRACODE, ULTRACODE SHC or ULTRACODE WRC.

UNITED STATES GYPSUM CO — 1/2 in. thick Type C, IP-X2, IPC-AR or WRC; 5/8 in. thick Type SCX, SHX, WRX, IP-X1, AR, C, WRC, FRX-S, IP-AR, IP-X2, IPC-AR; 3/4 in. thick Type IP-X3, ULTRACODE, ULTRACODE SHC or ULTRACODE WRC.

USG MEXICO S A DE C V — 1/2 in. thick Type C, IP-X2, IPC-AR or WRC; 5/8 in. thick Type AR, C, IP-AR, IP-X1, IP-X2, IPC-AR, SCX, SHX, WRX, WRC or 3/4 in. thick Type IP-X3, ULTRACODE, ULTRACODE SHC or ULTRACODE WRC.

4A. Gypsum Board\* — (As an alternate to Item 4) — 5/8 in. thick gypsum panels, installed as described in Item 4 with Type S-12 steel screws. The length and spacing of the screws as specified under Item 5.

CANADIAN GYPSUM COMPANY — Type FRX

UNITED STATES GYPSUM CO — Type FRX

4B. Gypsum Board\* — (As an alternate to Items 4 and 4A) — 5/8 in. thick, 2 ft. wide, tongue and groove edge, applied horizontally as the outer layer to one side of the assembly. Secured as described in Item 5. Joint covering (Item 7) not required.

CANADIAN GYPSUM COMPANY — Type SHX.

UNITED STATES GYPSUM CO — Type SHX.

USG MEXICO S A DE C V — Type SHX.

5. Fasteners — (Not shown) — Type S or S-12 steel screws used to attach panels to studs (Item 2) or furring channels (Item 6). Single layer systems: 1 in. long for 1/2 and 5/8 in. thick panels or 1-1/4 in. long for 3/4 in. thick panels, spaced 8 in. OC when panels are applied horizontally, or 8 in. OC along vertical and bottom edges and 12 in. OC in the field when panels are applied vertically. Two layer systems: First layer- 1 in. long for 1/2 and 5/8 in. thick panels or 1-1/4 in. long for 3/4 in. thick panels, spaced 16 in. OC. Second layer- 1-5/8 in. long for 1/2 in., 5/8 in. thick panels or 2-1/4 in. long for 3/4 in. thick panels, spaced 16 in. OC with screws offset 8 in. from first layer. Three-layer systems: First layer- 1 in. long for 1/2 in., 5/8 in. thick panels, spaced 24 in. OC. Second layer- 1-5/8 in. long for 1/2 in., 5/8 in. thick panels or 2-5/8 in. long for 5/8 in. thick panels, spaced 12 in. OC. Screws offset min 6 in. from layer below. Four-layer systems: First layer- 1 in. long for 1/2 in., 5/8 in. thick panels, spaced 24 in. OC. Second layer- 1-5/8 in. long for 1/2 in., 5/8 in. thick panels, spaced 24 in. OC. Third layer- 2-1/4 in. long for 1/2 in., 5/8 in. thick panels, spaced 24 in. OC. Fourth layer- 2-5/8 in. long for 1/2 in. thick panels or 3 in. long for 5/8 in. thick panels, spaced 12 in. OC. Screws offset min 6 in. from layer below.

6. Furring Channels — (Optional, not shown, for single or double layer systems) — Resilient furring channels fabricated from min 25 MSG corrosion-protected steel, spaced vertically a max of 24 in. OC. Flange portion attached to each intersecting stud with 1/2 in. long Type S-12 steel screws. Not for use with Item 4A.

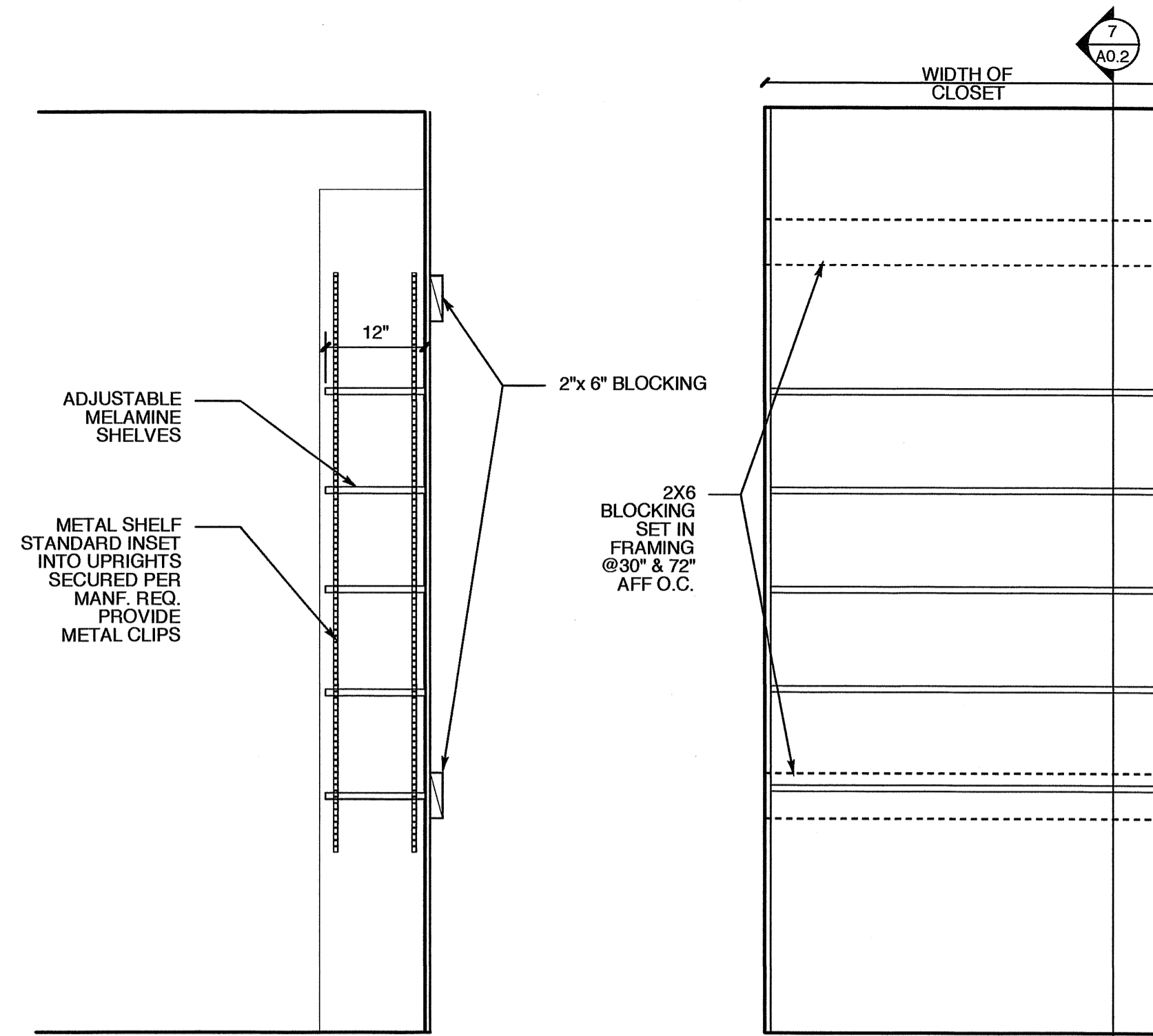
7. Joint Tape and Compound — Vinyl or casein, dry or premixed joint compound applied in two coats to joints and screw heads of outer layers. Paper tape, nom 2 in. wide, embedded in first layer of compound over all joints of outer layer panels. Paper tape and joint compound may be omitted when gypsum panels are supplied with a square edge.

8. Siding, Brick or Stucco — (Optional, not shown) — Aluminum, vinyl or steel siding, brick veneer or stucco, meeting the requirements of local code agencies, installed over gypsum panels. Brick veneer attached to studs with corrugated metal wall ties attached to each stud with steel screws, not more than each sixth course of brick.

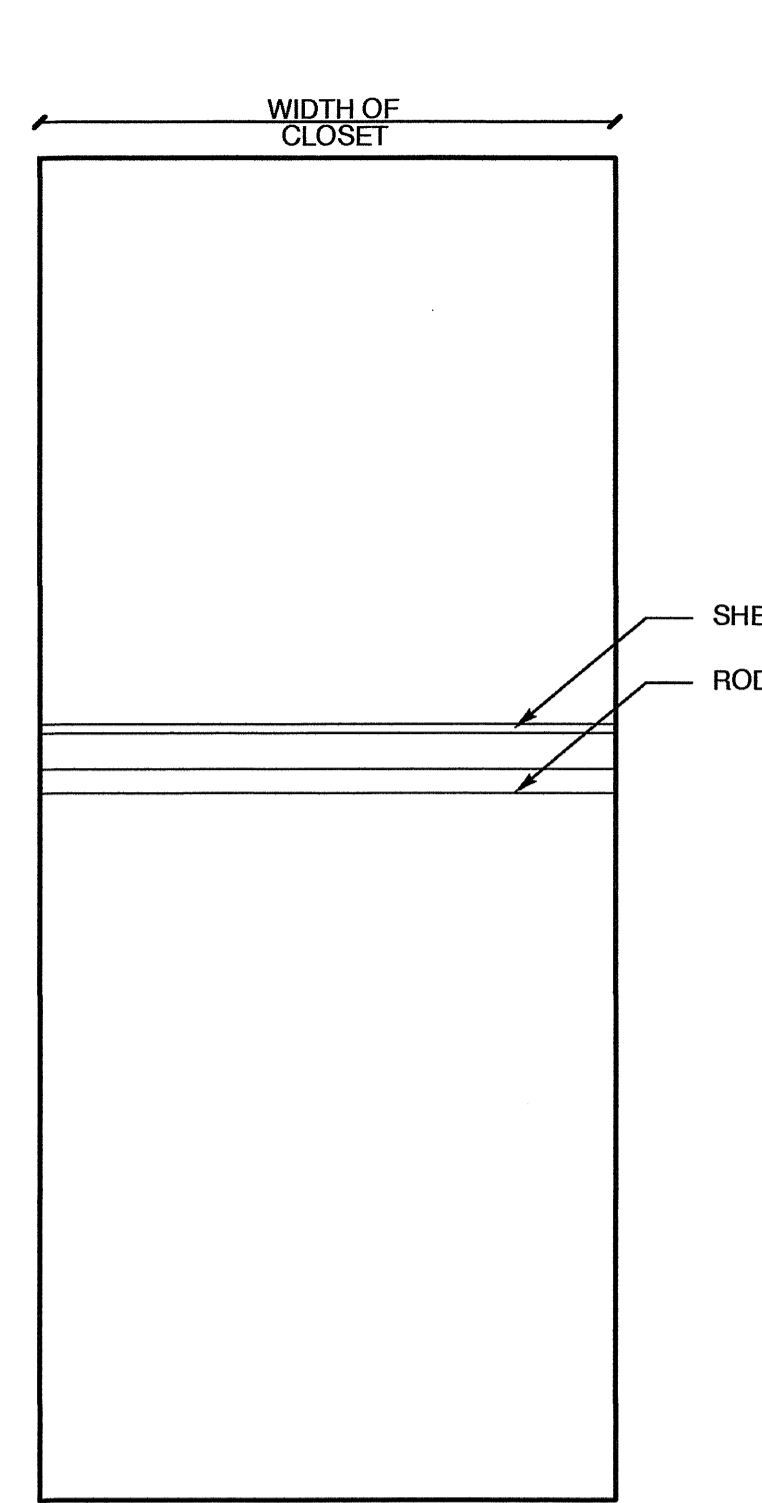
9. Caulking and Sealants\* — (Optional, not shown) — A bead of acoustical sealant applied around the partition perimeter for sound control.

UNITED STATES GYPSUM CO — Type AS

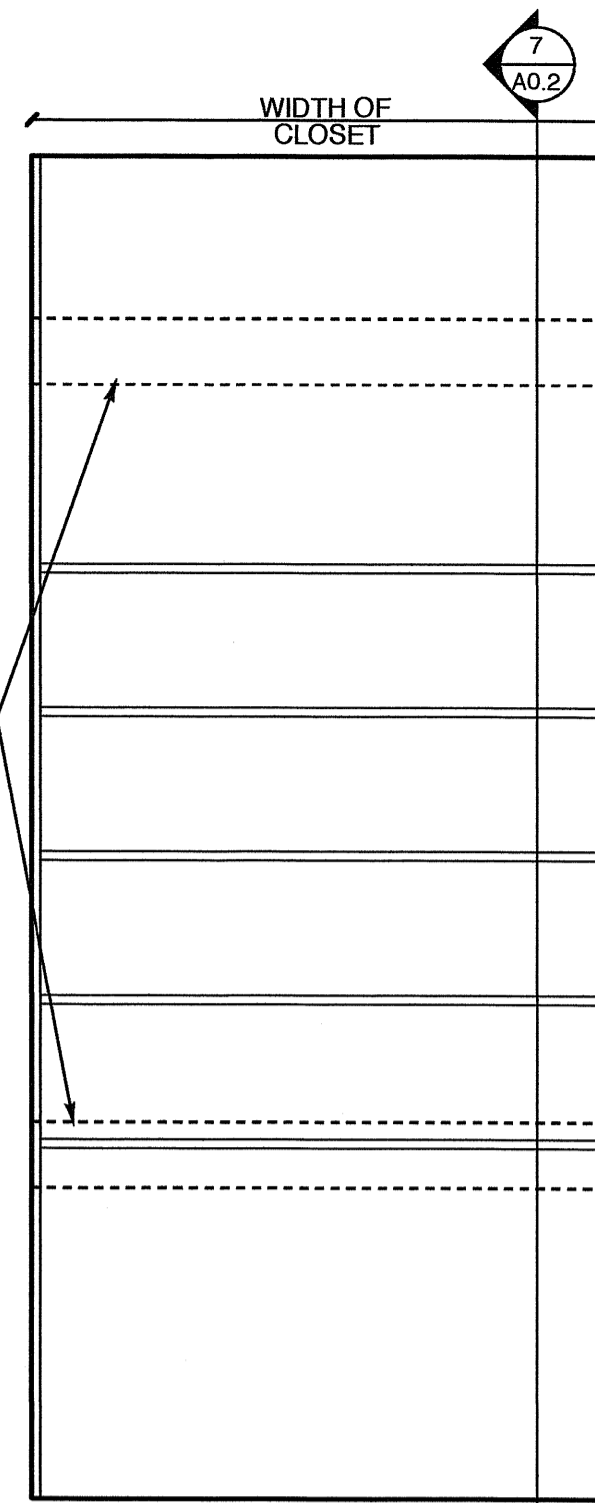
\*Bearing the UL Classification Mark



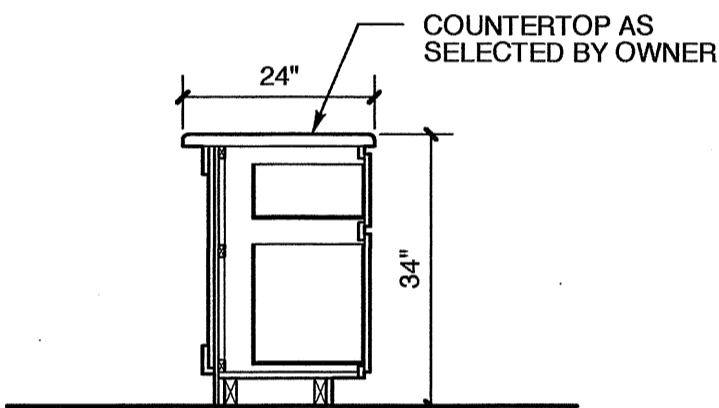
**7 SHELVING SECTION**  
SCALE: 3/4" = 1'-0"



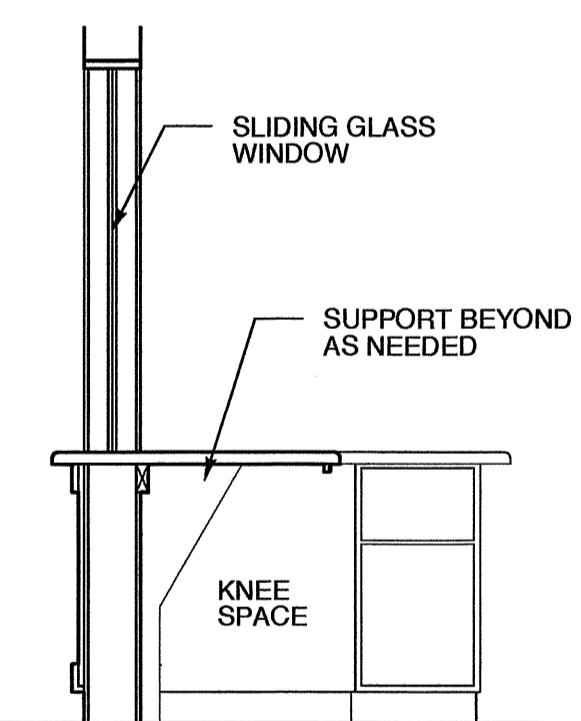
**5 ROD ELEV.**  
SCALE: 3/4" = 1'-0"



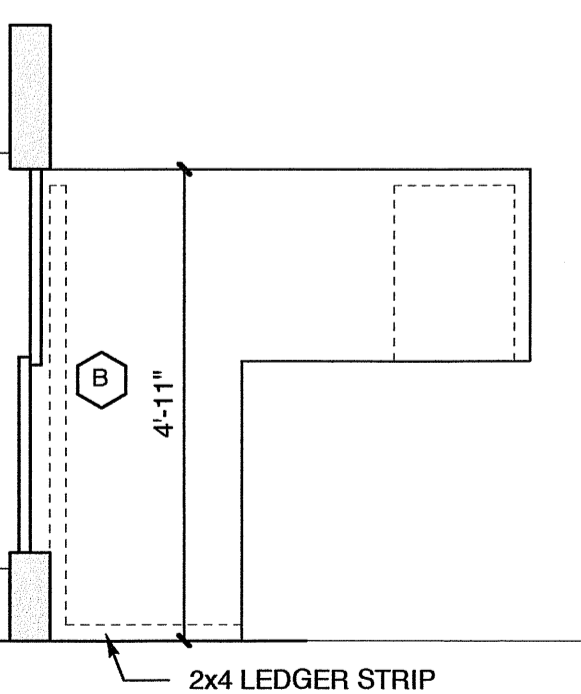
**6 SHELVING ELEV.**  
SCALE: 3/4" = 1'-0"



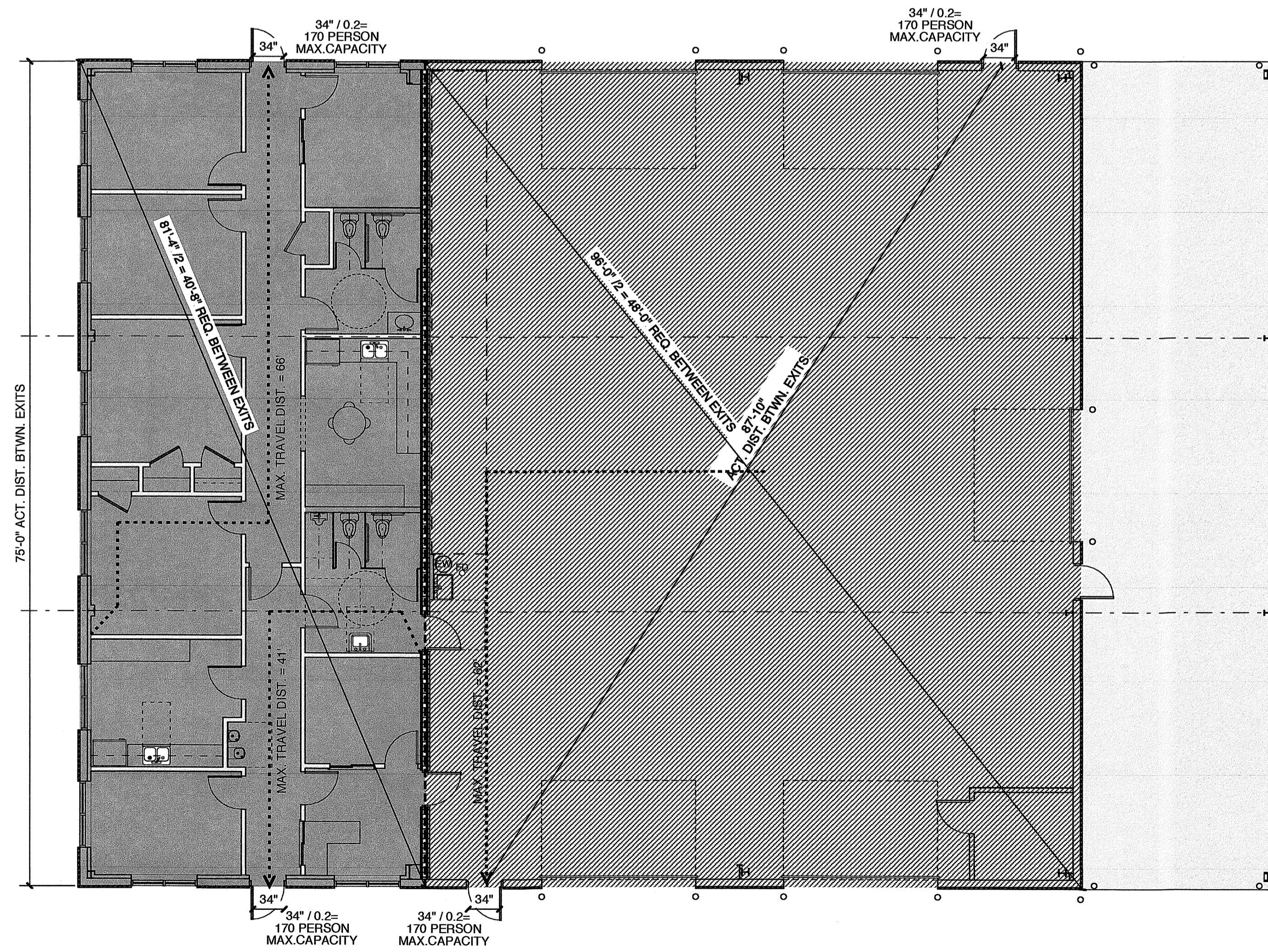
**4 DESK SECTION**  
SCALE: 1/2" = 1'-0"



**3 DESK SECTION**  
SCALE: 1/2" = 1'-0"



**2 DESK PLAN**  
SCALE: 1/2" = 1'-0"



**1 LIFE SAFETY PLAN**  
SCALE: 1/8" = 1'-0"

**AREAS**

2,356 SF	OFFICE AREA
4,469 SF	SHOP AREA
<b>6,825 SF</b>	<b>TOTAL AREA</b>
1,331 SF	CANOPY AREA

**EGRESS REQ. & CODE REF.**

USE: BUSINESS	2,356 SF/100 = 24 PEOPLE
USE: REPAIR GARARGE	4,469 SF/ 500 = 9 PEOPLE
USE: STORAGE	1,340 SF/ 500 = 3 PEOPLE

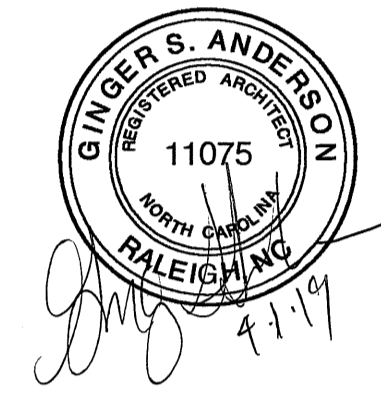
36 x 0.2" = 7.2" CLEAR EGRESS WIDTH REQ'D  
DOORS TO HAVE 32" MIN. CLR. PER 404.2.2 OF ANSI A117.1  
THE CLEAR WIDTH OF INTERIOR ACCESSIBLE ROUTE IS 36" MIN. PER 403.5 OF ANSI A117.1

**WEEKS TURNER ARCHITECTURE**

WEEKS TURNER ARCHITECTURE, PA  
3305-109 Durham Drive  
Raleigh, North Carolina 27603  
919.779.9797 fax: 919.779.0826  
www.weeksturner.com

**Ruffy Peedin**  
COMMERCIAL DESIGN BUILD

5121 Kingdom Way, Suite 208  
Raleigh, North Carolina 27607  
919.459.8188  
www.Ruffy-Peedin.com



PROJECT TITLE  
**G&D HAULING**

JARCO DRIVE  
FLOQUAY-VARINA, NORTH CAROLINA

PROJECT NO.  
**1842**

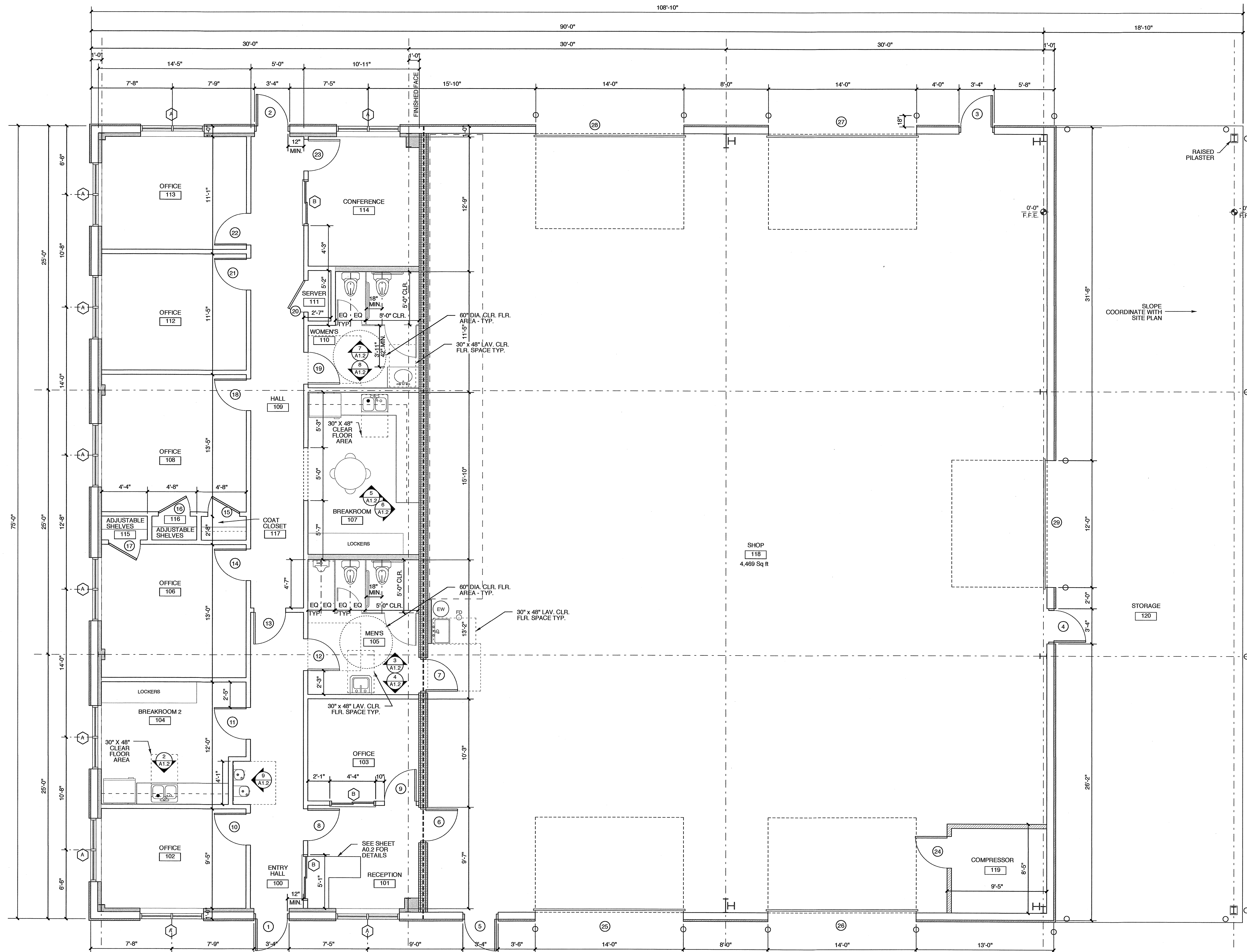
DRAWING TITLE  
**LIFE SAFETY**

SHEET 2 OF 7

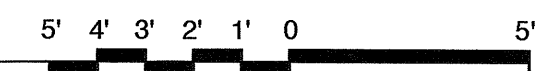
**A0.2**

PLOT DATE 4/1/19  
REVISION 00/00/16

This original sheet is 24" x 36"; other dimensions indicate it has been altered.  
All information on this sheet is the property of Weeks Turner Architecture and may not be duplicated in whole or in part without written authorization from Weeks Turner Architecture, 2016 ©



**1 FLOOR PLAN**  
SCALE: 1/4" = 1'-0"

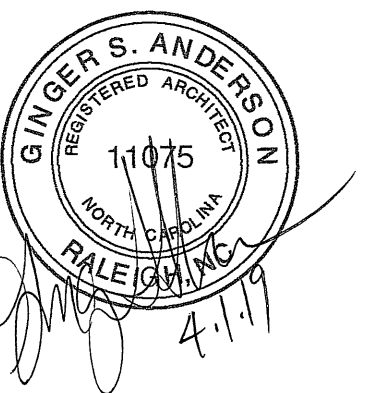


**WEEKS  
TURNER  
ARCHITECTURE**

WEEKS TURNER ARCHITECTURE, PA  
3305-108 Durham Drive  
Raleigh, North Carolina 27603  
919.779.9797 fax: 919.779.0826  
www.weeksturner.com

**Ruffy Peedin**  
COMMERCIAL DESIGN BUILD

5121 Kingdom Way, Suite 208  
Raleigh, North Carolina 27607  
919.458.8188  
www.Ruffy-Peedin.com



**WALL LEGEND**

	EXT. METAL WALL PANEL WITH LINER SYSTEM & FURRING W/ DRYWALL
	EXT. METAL WALL PANEL WITH LINER SYSTEM
	3 HOUR RATED FIRE BARRIER
	FULL HEIGHT MTL STUD WALL
	PARTIAL HEIGHT MTL STUD WALL 3' 5/8"
	PARTIAL HEIGHT MTL STUD WALL 6"

PROJECT TITLE  
**G&D HAULING**

JARCO DRIVE  
FUQUAY-VARINA, NORTH CAROLINA

PROJECT NO.  
**1842**

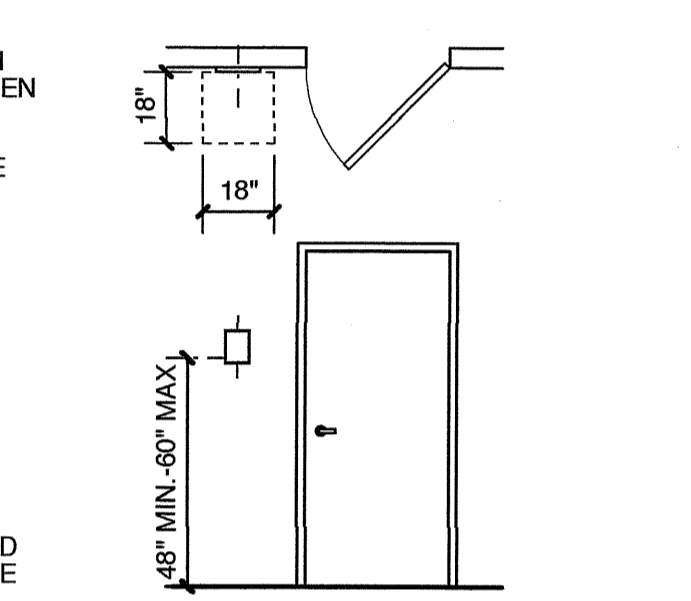
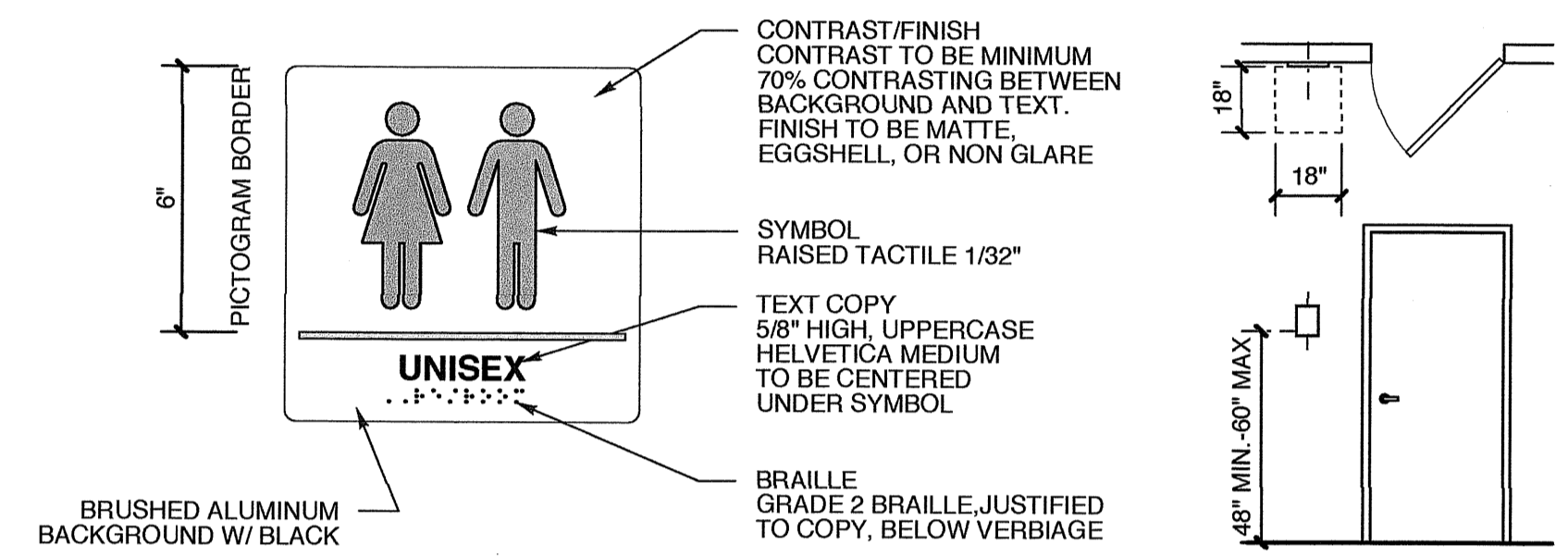
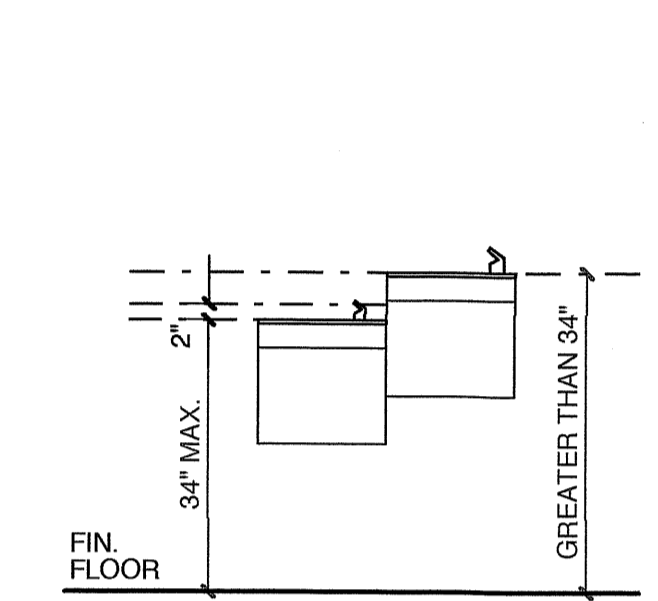
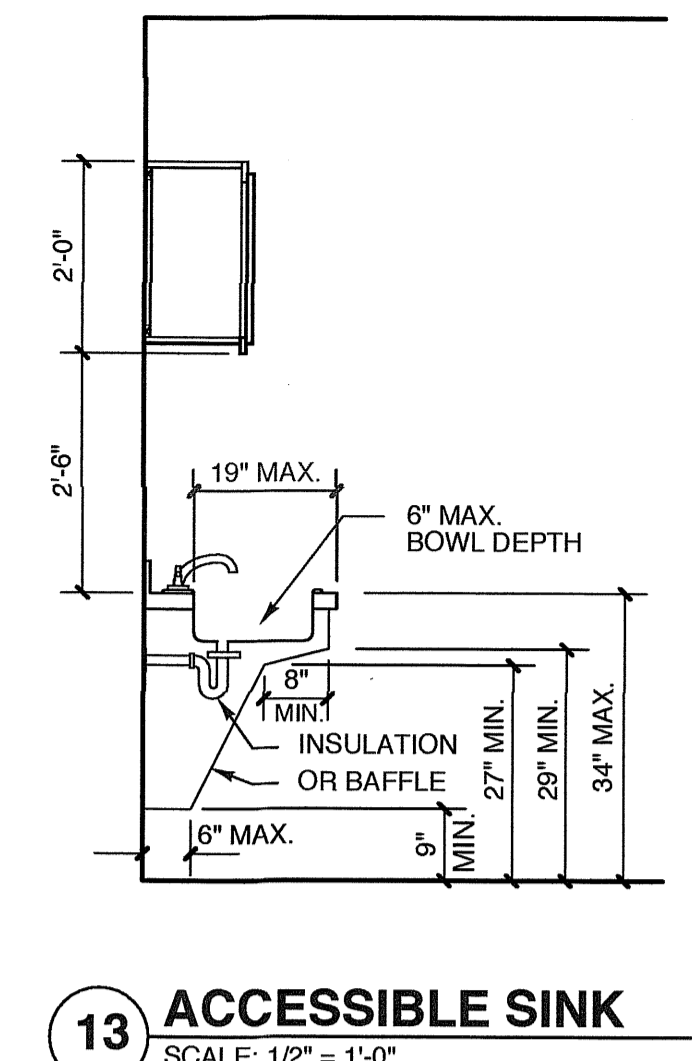
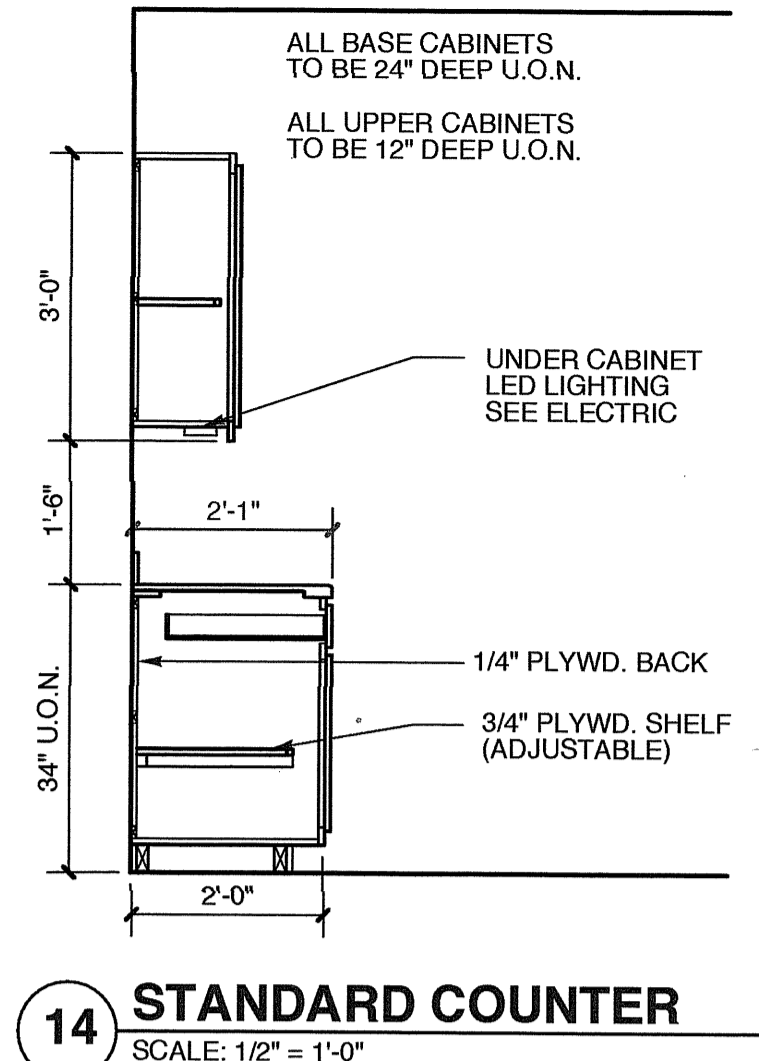
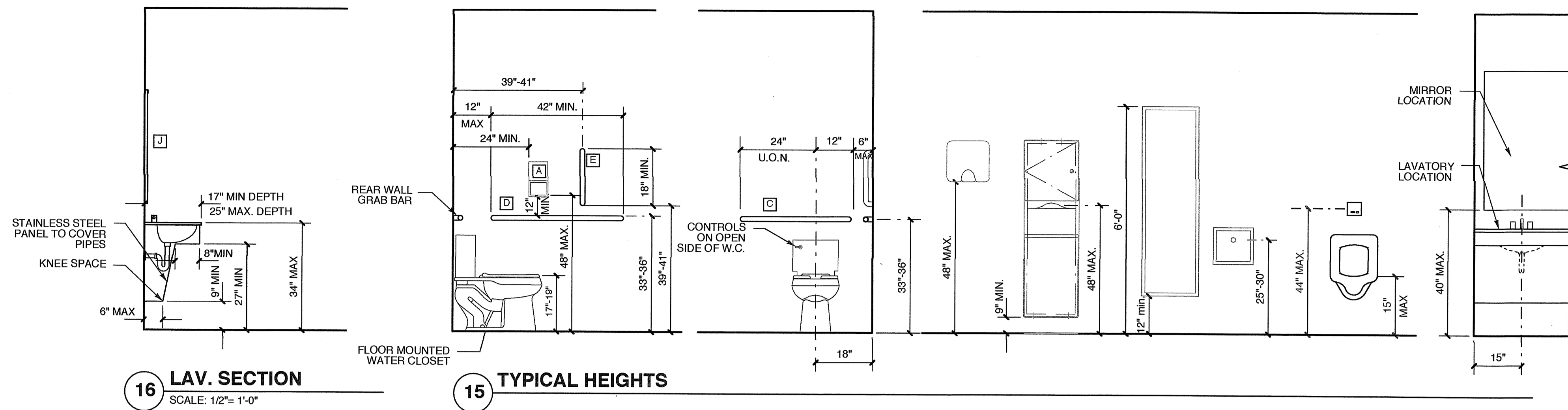
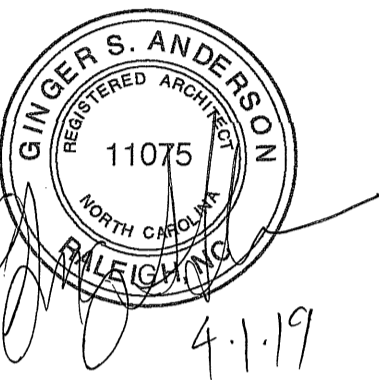
DRAWING TITLE  
**FLOOR PLAN**

SHEET 3 OF 7

**A1.1**

PLOT DATE 4/1/19  
REVISION 00/00/08

This original sheet is 24" x 36". Other dimensions indicate it has been altered.  
All information on this sheet is the property of Weeks Turner Architecture and may not be duplicated in whole or in part without written authorization from Weeks Turner Architecture. 2008 ©



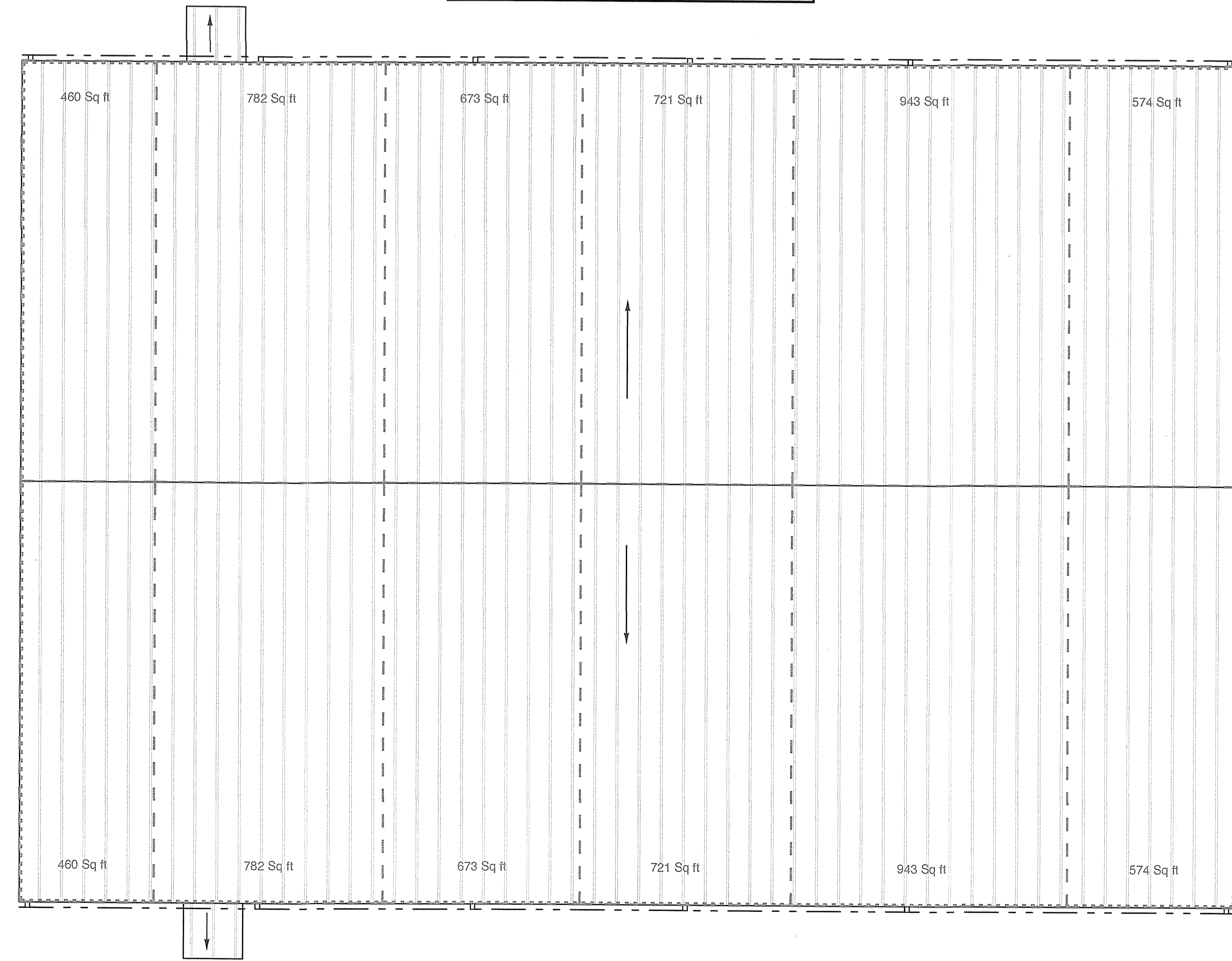
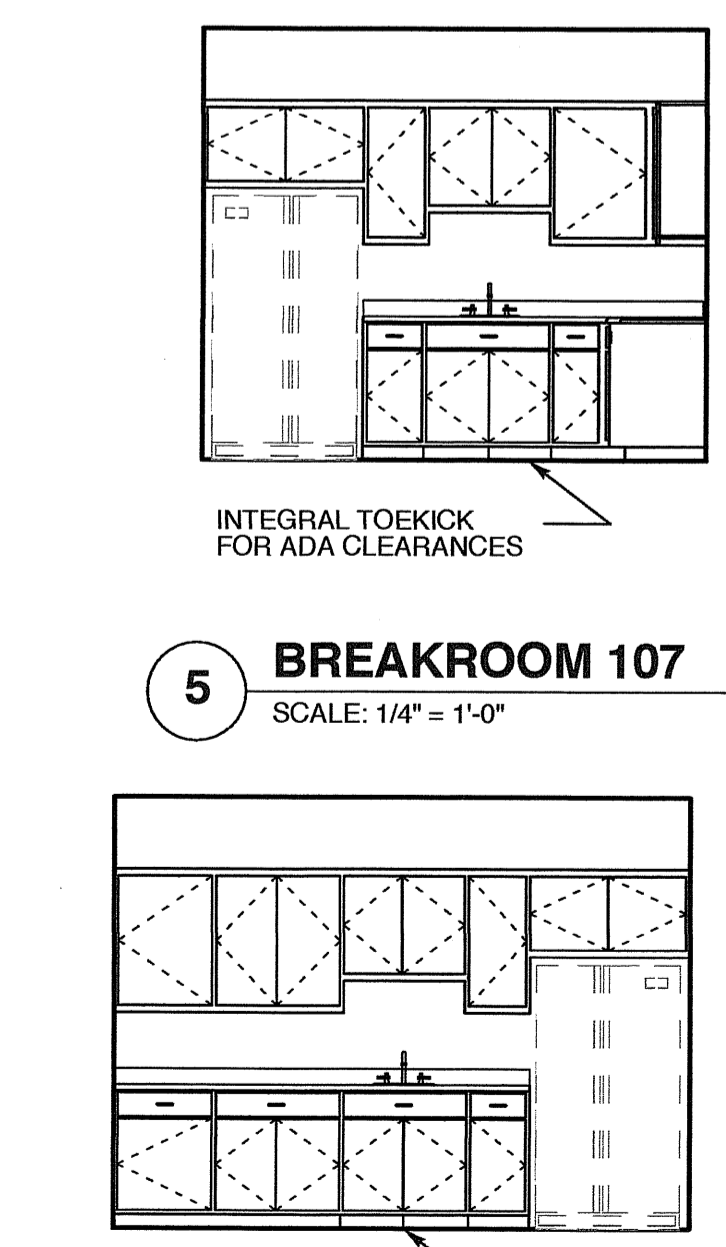
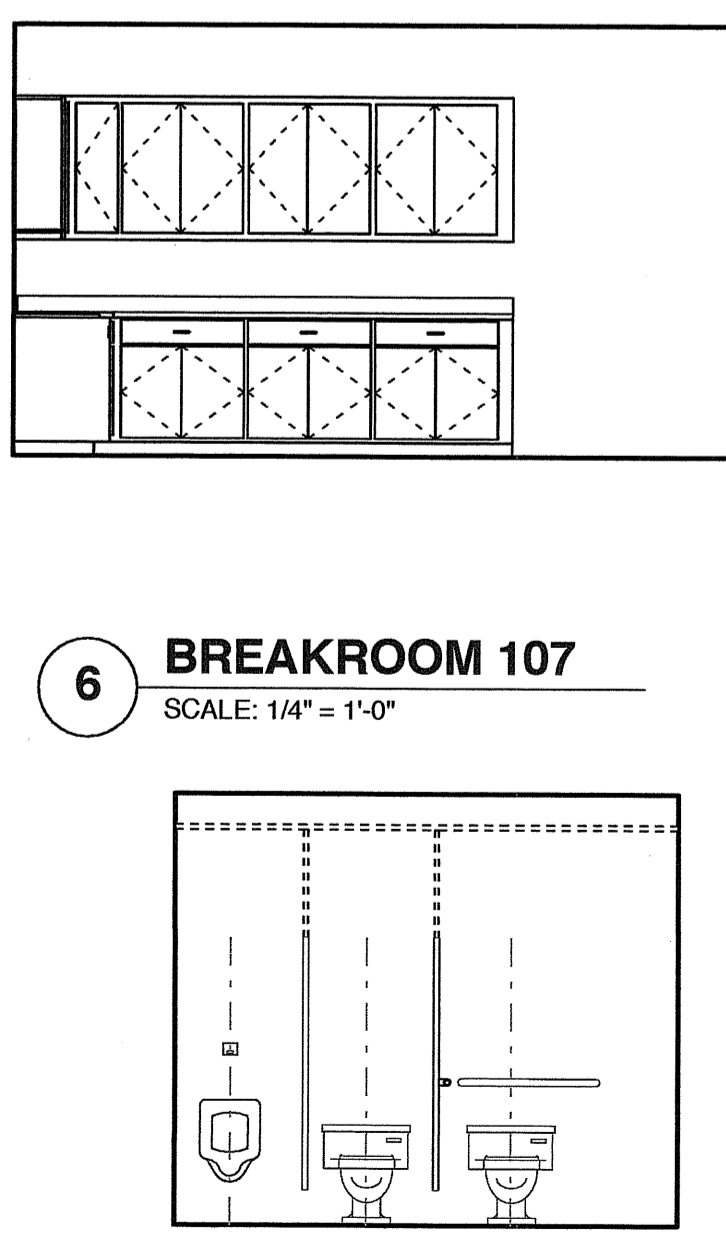
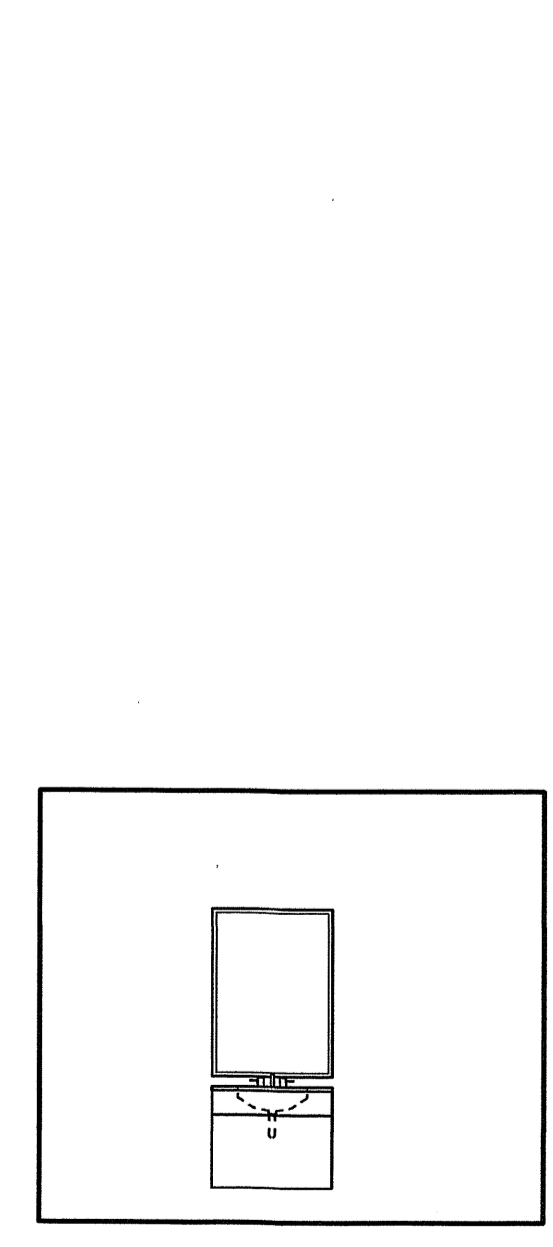
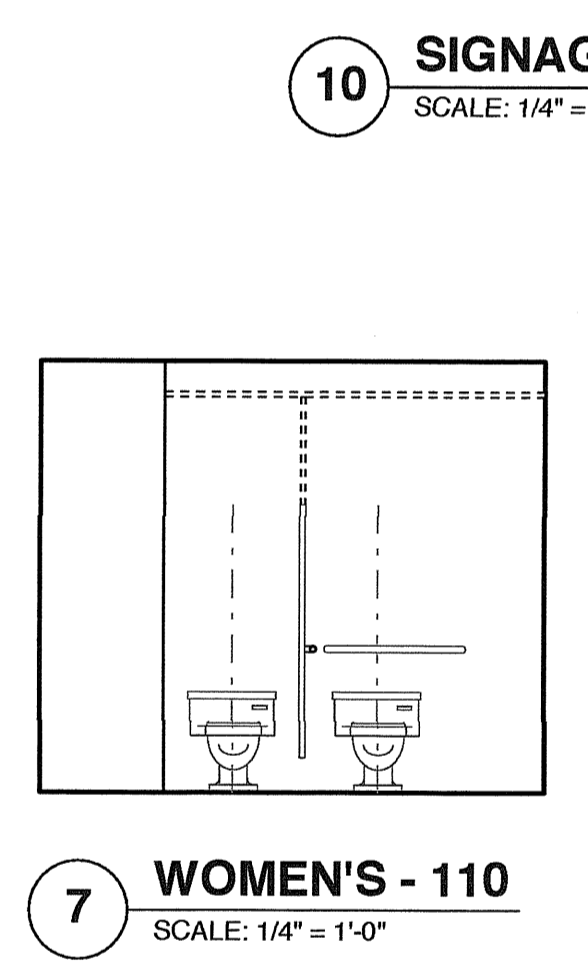
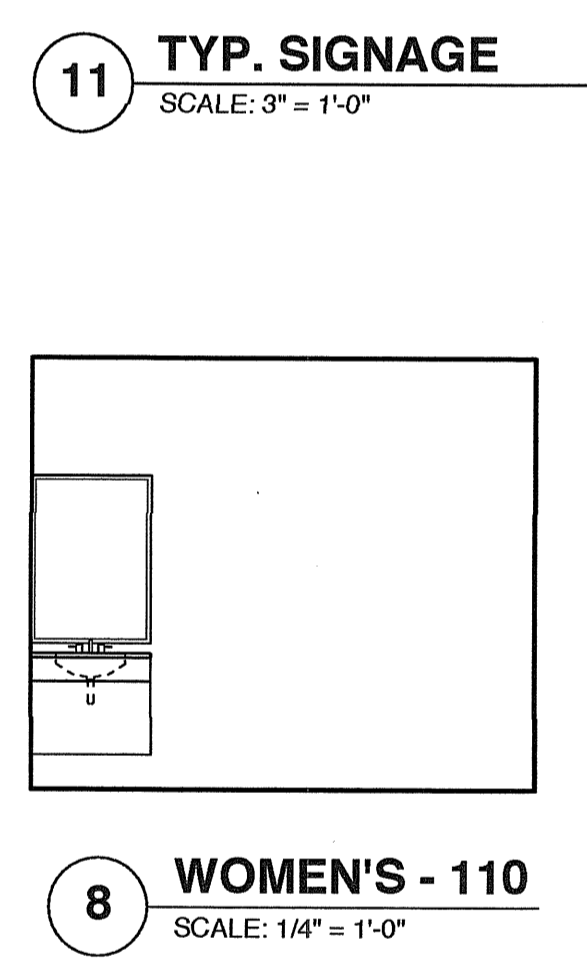
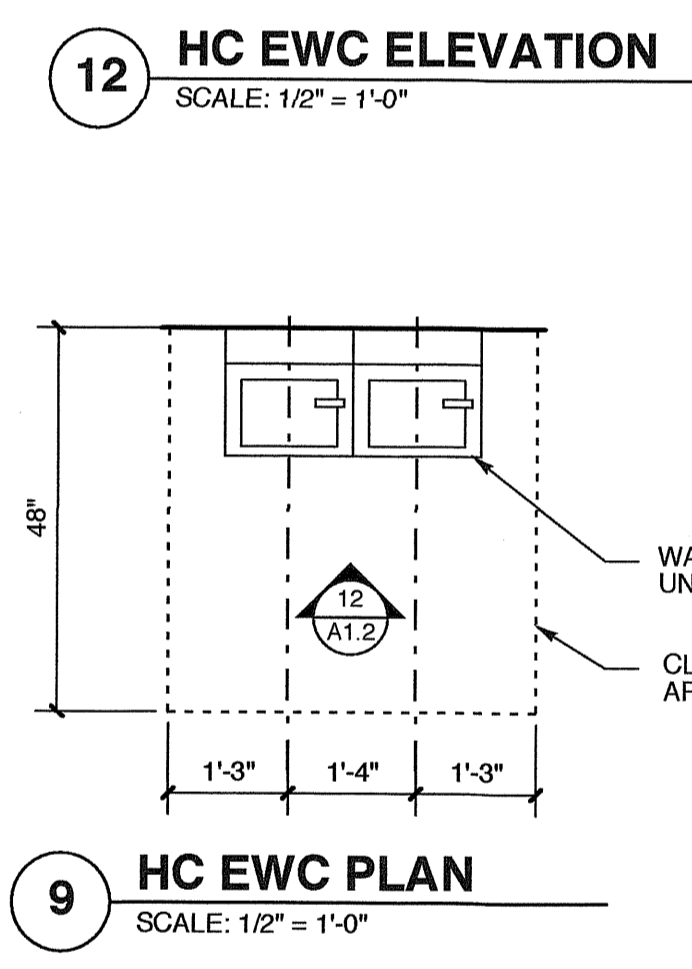
**ROOF DRAINAGE LEGEND**

3.5" x 5" VERTICAL LEADER
5" EAVE GUTTER @ 1/8:12 SLOPE

ALL ROOF PENETRATIONS TO BE PAINTED TO MATCH ROOF.

**ROOF DRAINAGE CALCULATIONS**  
PER 2012 NC PLUMBING CODE

TABLE 1106.2 (2) RECTANGULAR VERTICAL LEADERS		
3-1/2 X 5	@ 4"/HR	5,320 SF MAX AREA
TABLE 1106.6 SIZE OF SEMI-CIRCULAR ROOF GUTTERS		
5" DIA.	@ 4"/HR	880 SF MAX AREA @ 1/8: 12 (1%) SLOPE



**FOR PERMIT  
PROCESS ONLY**

PROJECT TITLE  
**G&D HAULING**

JARCO DRIVE  
FUQUAY-VARINA, NORTH CAROLINA

PROJECT NO.  
**1842**

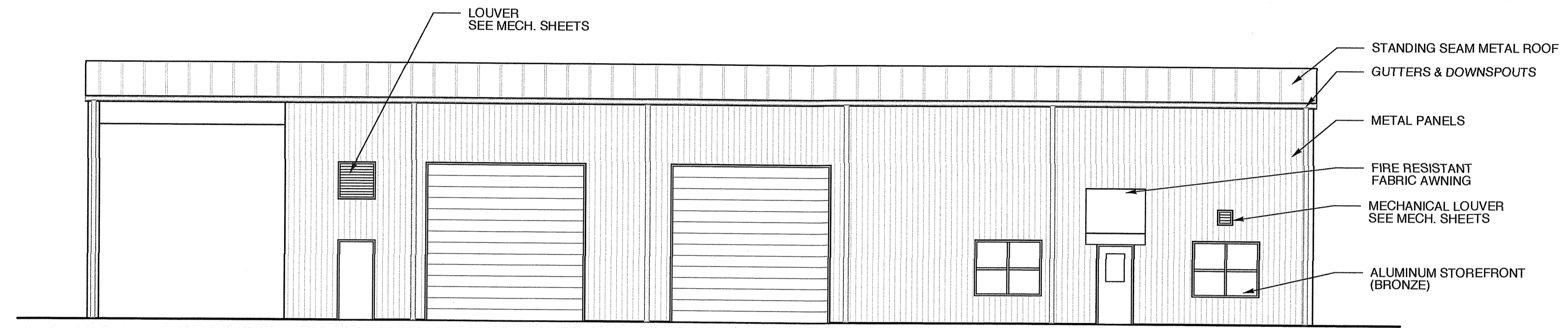
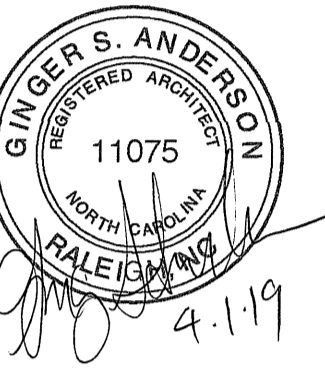
DRAWING TITLE  
**ROOF PLAN**

SHEET 4 OF 7

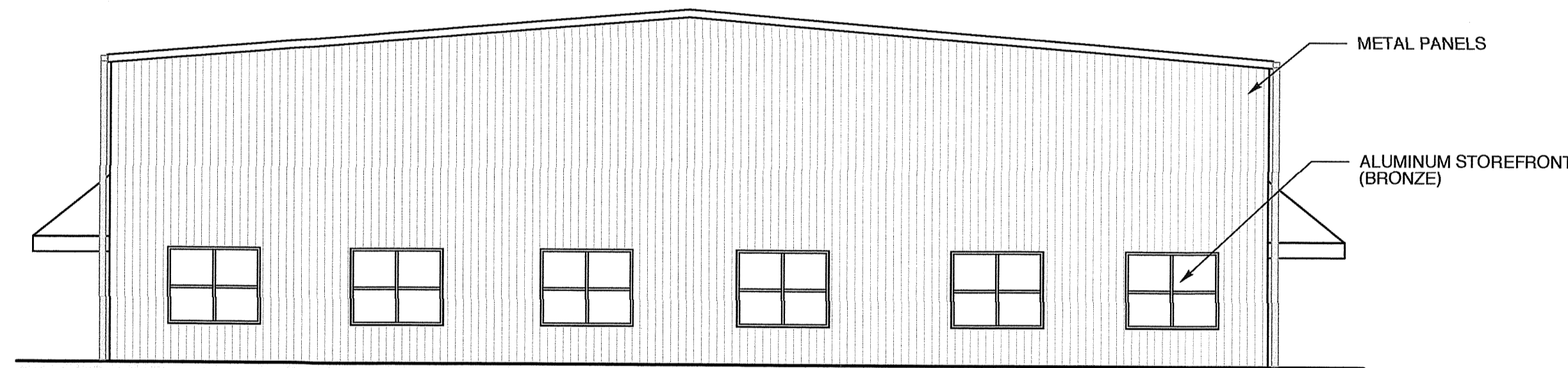
**A1.2**

PLOT DATE 4/1/19  
REVISION 00/00/08

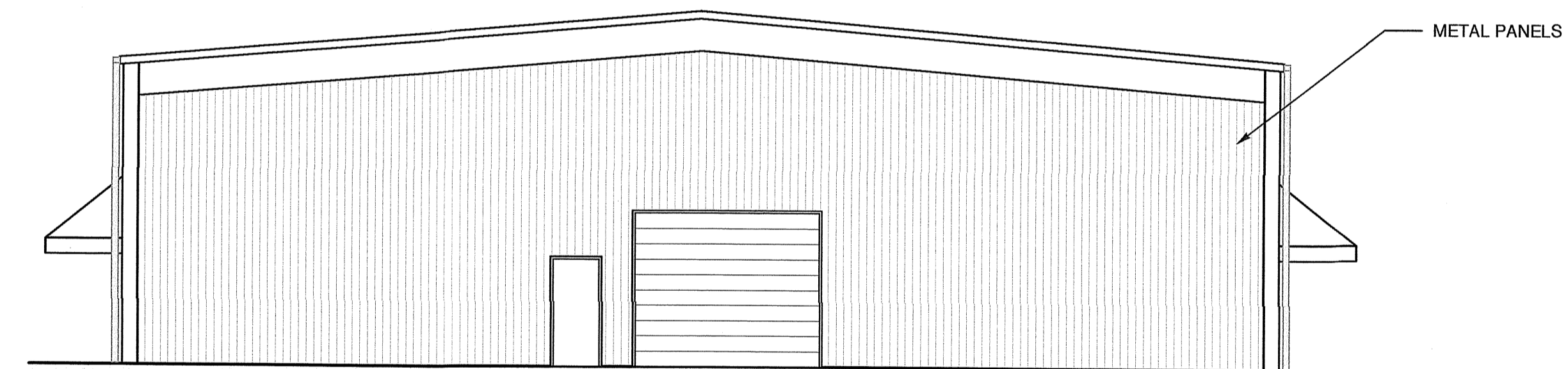
This original sheet is 24" x 36"; other dimensions indicate it has been altered.  
All information on this sheet is the property of Weeks Turner Architecture and may not be duplicated in whole or in part without written authorization from Weeks Turner Architecture, 2008 ©



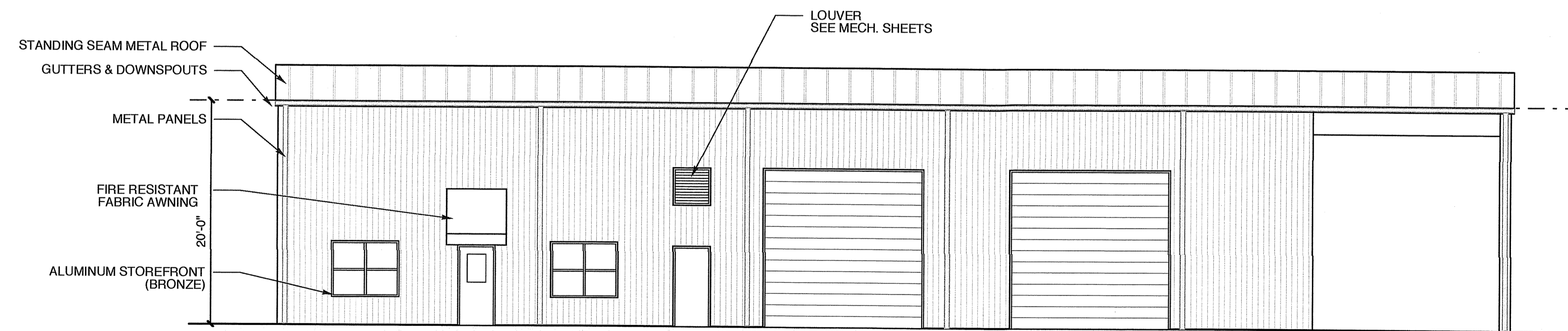
**4 REAR ELEVATION**  
SCALE: 1/8" = 1'-0"



**3 LEFT ELEVATION**  
SCALE: 1/8" = 1'-0"



**2 RIGHT ELEVATION**  
SCALE: 1/8" = 1'-0"



**1 FRONT ELEVATION**  
SCALE: 1/8" = 1'-0"

PROJECT TITLE  
**G&D**  
JARCO DRIVE  
FUQUAY-VARINA, NORTH CAROLINA

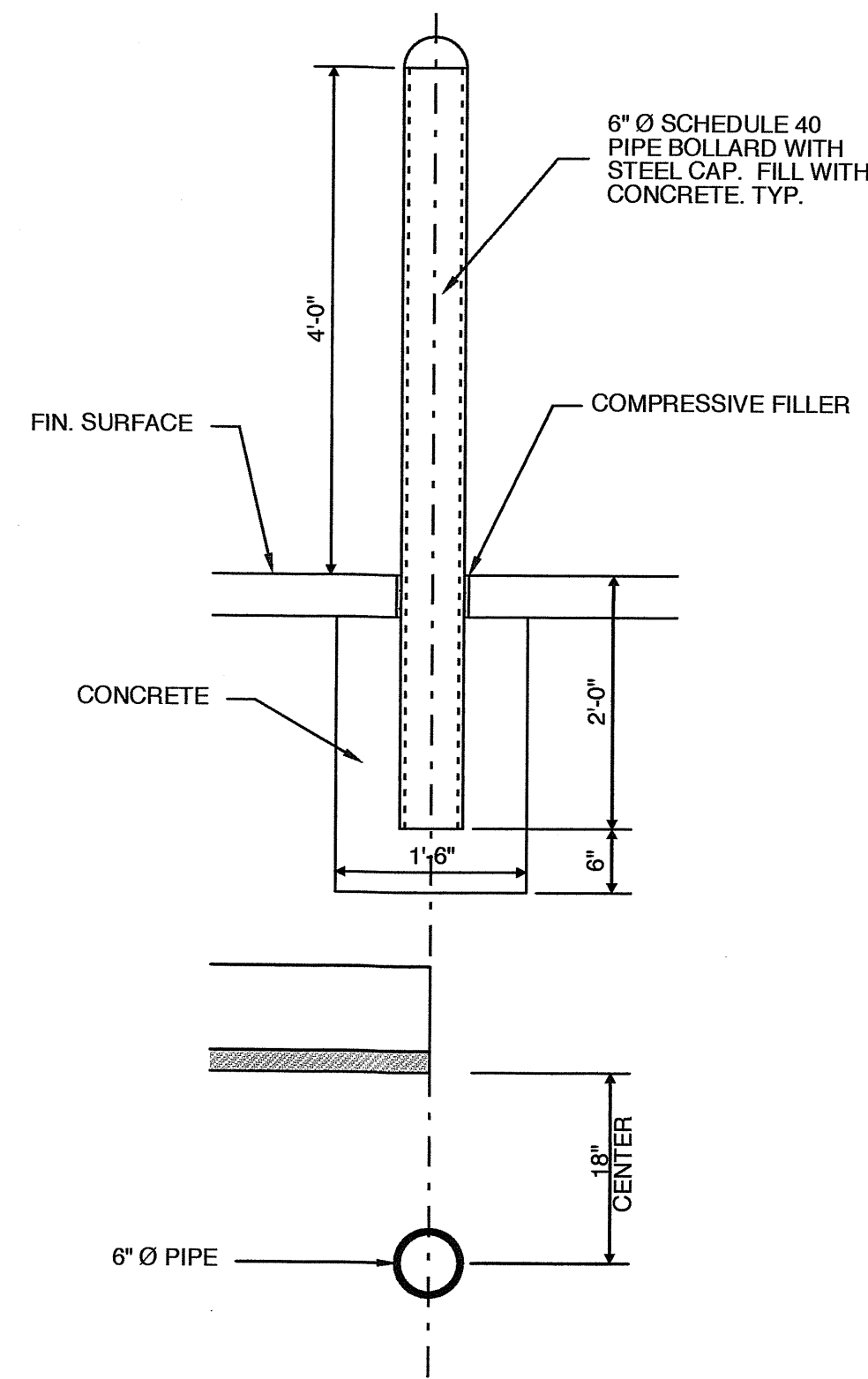
PROJECT NO.  
**1842**  
DRAWING TITLE  
**ELEVATIONS**

SHEET 5 OF 7

**A2**

PLOT DATE 4/11/19  
REVISION 00/00/08

This original sheet is 24" x 36"; other dimensions indicate it has been altered.  
All information on this sheet is the property of Weeks Turner Architecture and may not be duplicated in whole or in part without written authorization from Weeks Turner Architecture. 2008 ©

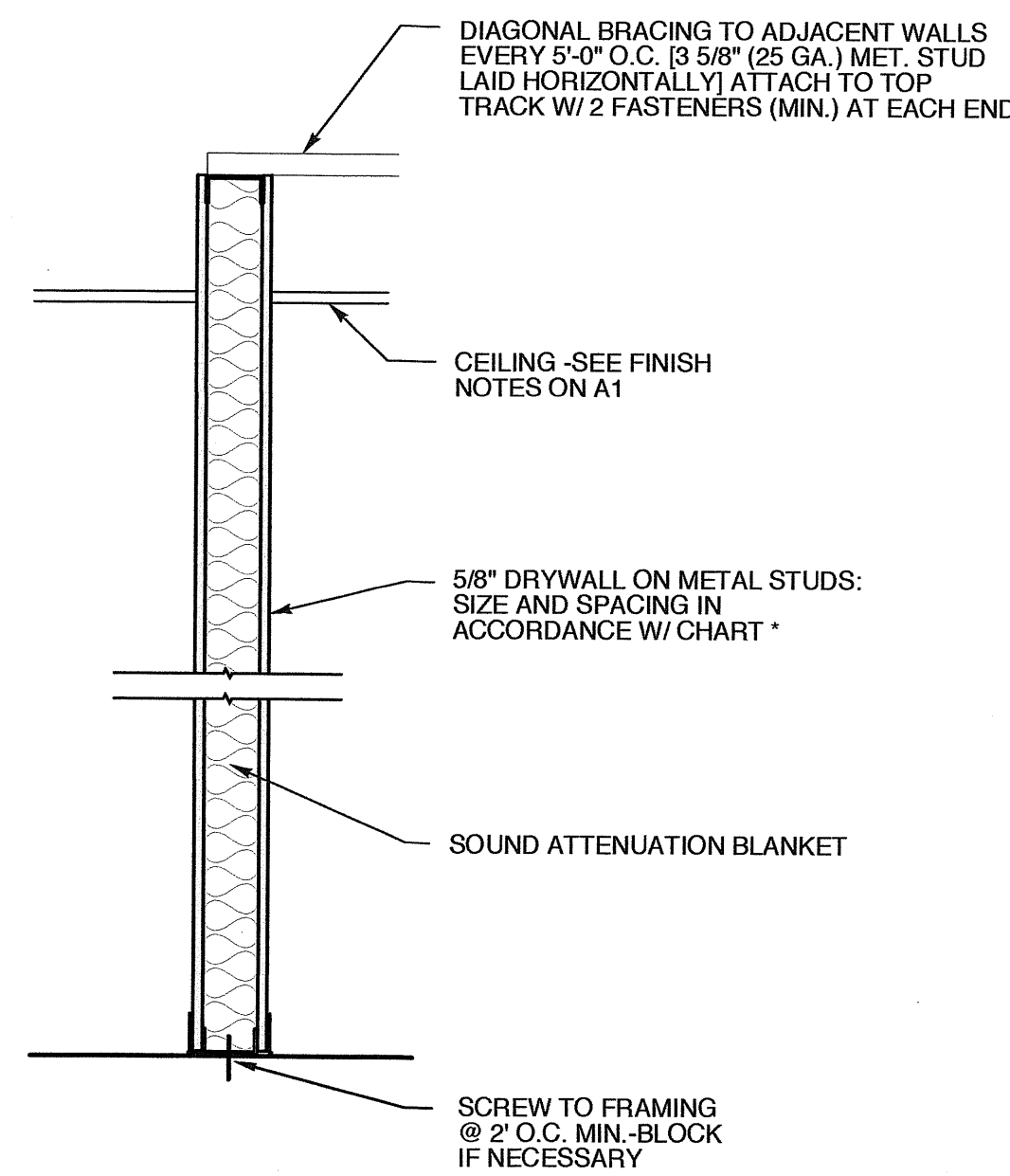


**2 BOLLARD DETAIL**  
SCALE: 3/4" = 1'-0"

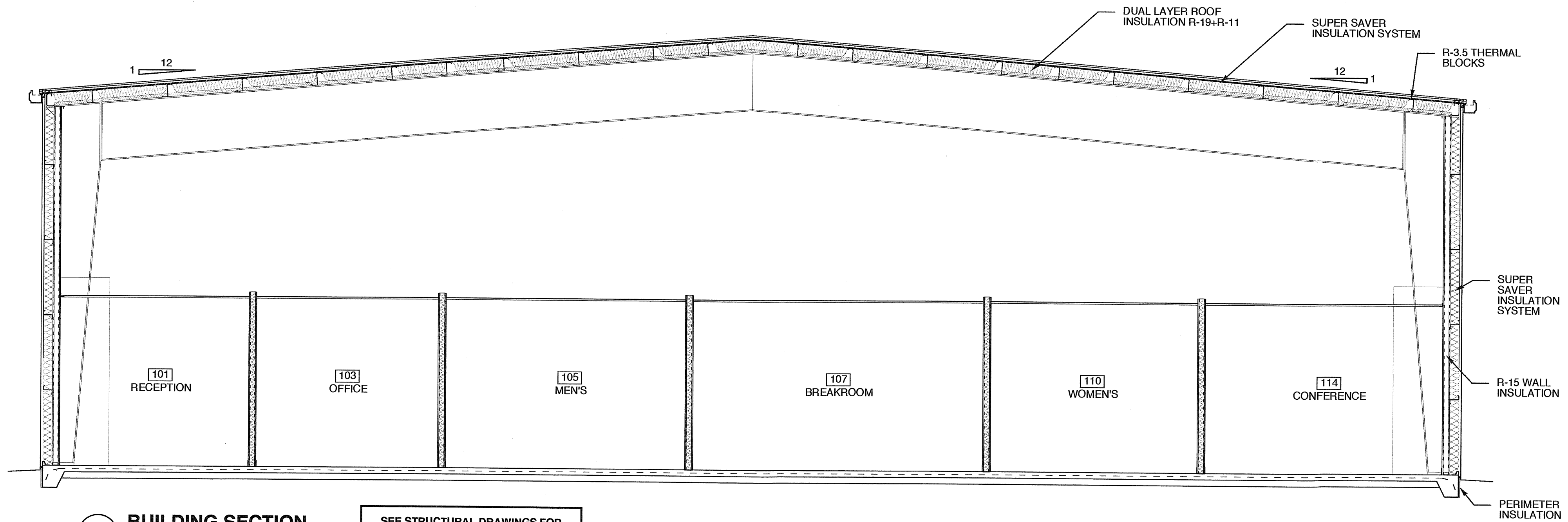
MAXIMUM STUD HEIGHTS FOR INTERIOR TENANT SEPARATION WALLS

Size	Gauge	O.C. Spacing	Max. Height
2 1/2"	25 ga.	12"	13'-11"
		16"	12'-8"
		24"	11'-1"
3 5/8"	24 ga.	12"	18'-6"
		16"	16'-10"
		24"	14'-8"
3 1/2"	25 ga.	12"	18'-0"
		16"	16'-4"
		24"	14'-4"
6"	25 ga.	12"	27'-7"
		16"	26'-0"
		24"	21'-10"
8"	25 ga.	12"	34'-10"
		16"	31'-7"
		24"	27'-7"

Top track by Fire Trak Corp. or equal and of same gauge as stud  
 \* Based upon information furnished by Dietrich for CWN type steel studs.  
 (alternate stud types and gauges shall be approved by the architect)

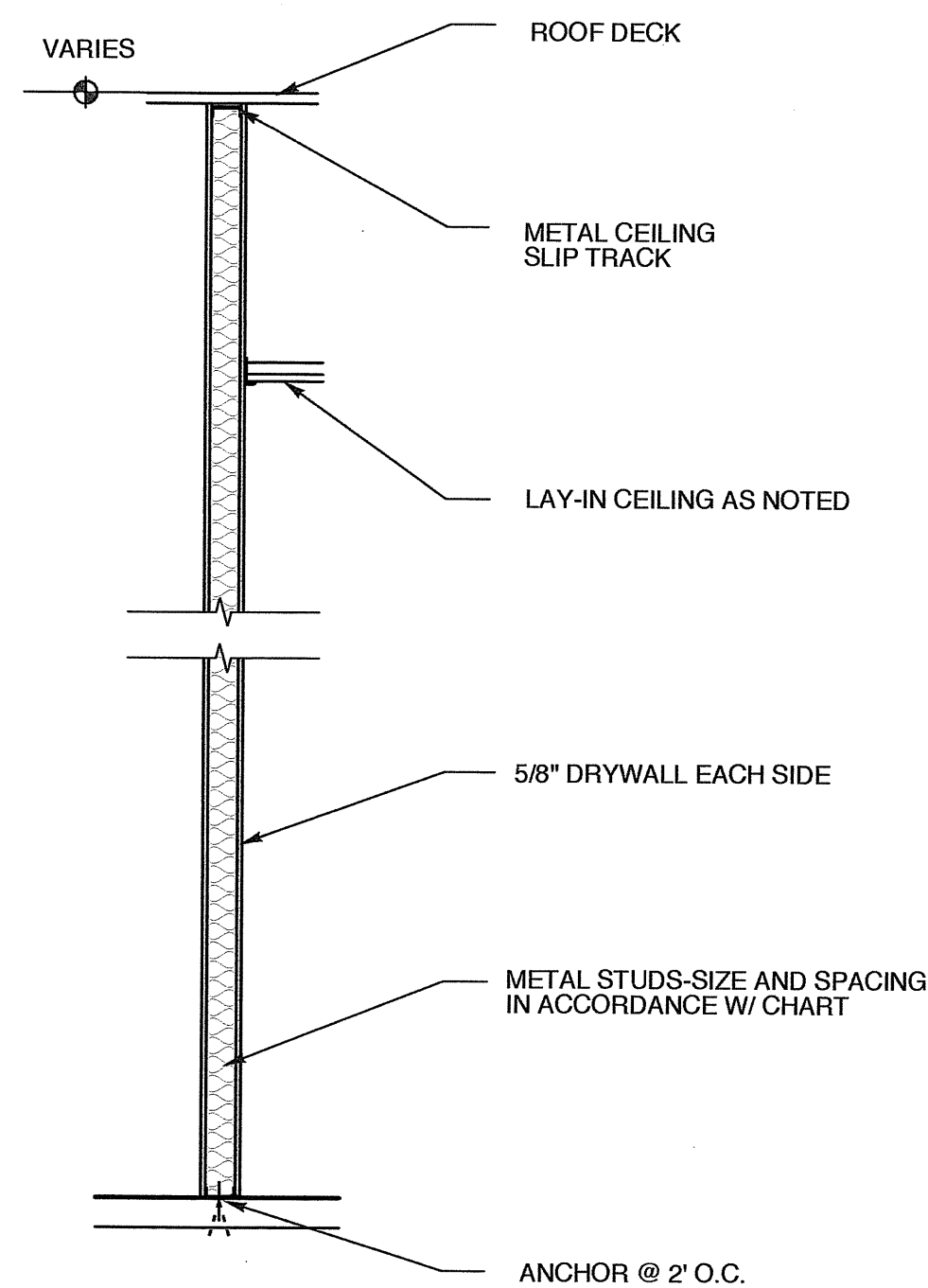


**6 NON-RATED WALL SECTION**  
SCALE: NTS

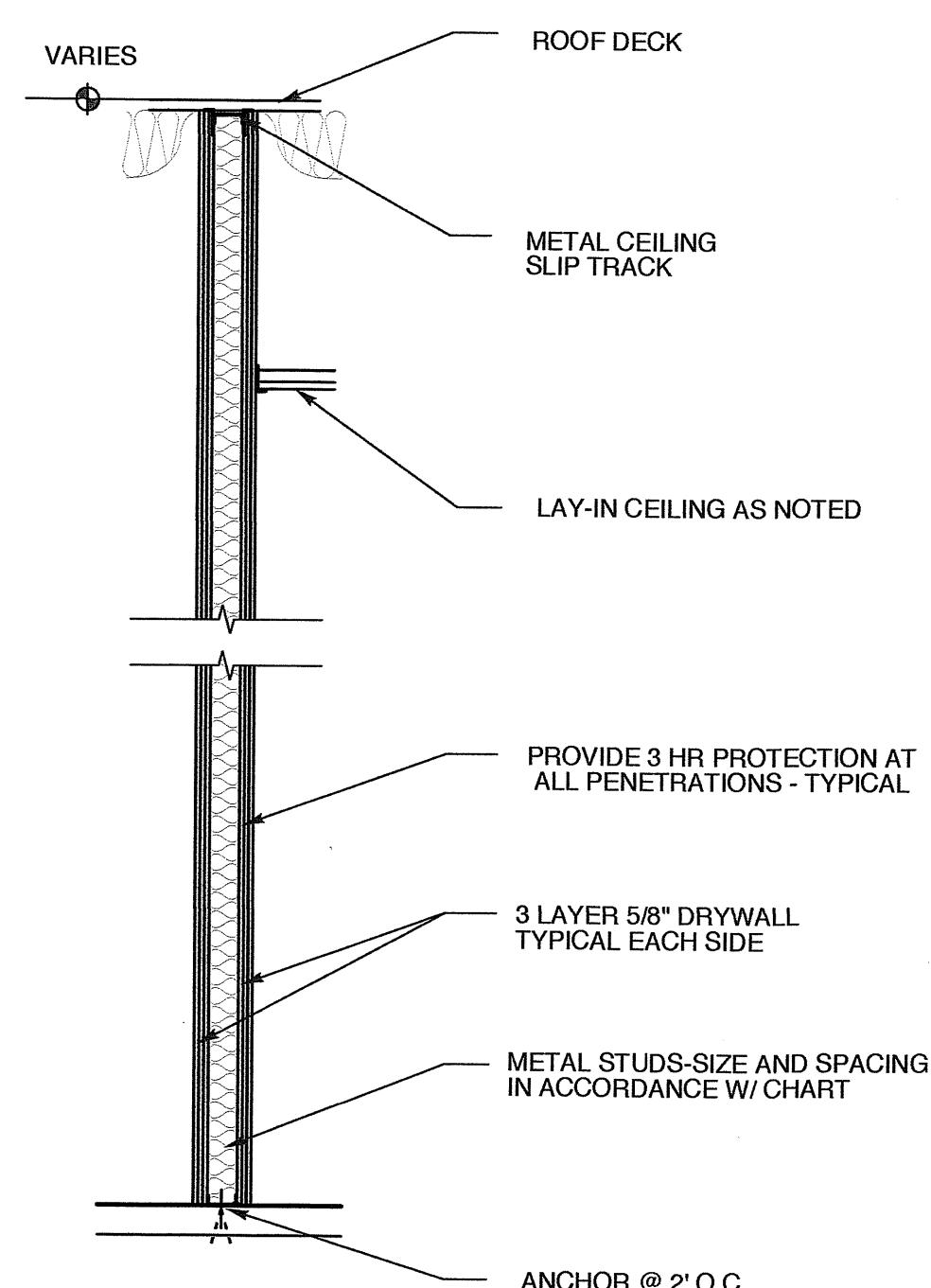


**1 BUILDING SECTION**  
SCALE: 1/4" = 1'-0"

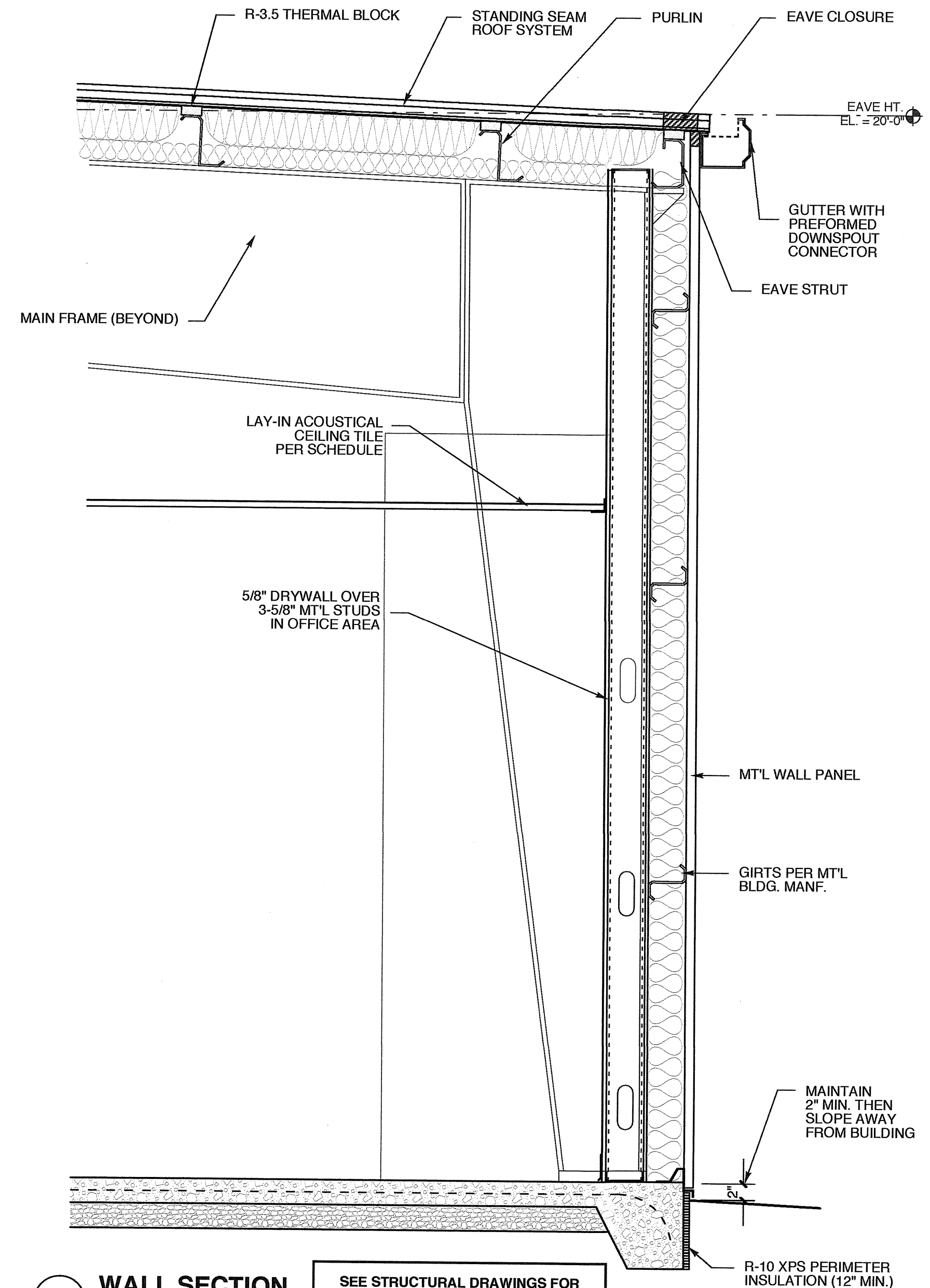
SEE STRUCTURAL DRAWINGS FOR FOUNDATION AND FRAMING INFORMATION



**5 FULL HEIGHT WALL SECTION**  
SCALE: 1/2" = 1'-0"

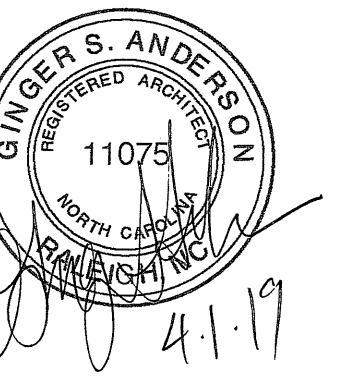


**4 3 HOUR SEPARATION WALL**  
SCALE: 1/2" = 1'-0"



**3 WALL SECTION**  
SCALE: 3/4" = 1'-0"

SEE STRUCTURAL DRAWINGS FOR FOUNDATION AND FRAMING INFORMATION



DOOR SCHEDULE							
MARK	DOOR		FRAME			HWDR SET NO.	REMARKS
	SIZE	MAT'L	TYPE	TYPE	DETAILS		
16	3'-0" x 7'-0" x 1-3/4"	SC. WD.	C	B	---	5	---
17	3'-0" x 7'-0" x 1-3/4"	SC. WD.	C	B	---	5	---
18	3'-0" x 7'-0" x 1-3/4"	SC. WD.	C	B	---	5	---
19	3'-0" x 7'-0" x 1-3/4"	SC. WD.	C	B	---	2	---
20	3'-0" x 7'-0" x 1-3/4"	SC. WD.	F	B	---	5	---
21	3'-0" x 7'-0" x 1-3/4"	SC. WD.	C	B	---	5	---
22	3'-0" x 7'-0" x 1-3/4"	SC. WD.	C	B	---	5	---
23	3'-0" x 7'-0" x 1-3/4"	SC. WD.	C	B	---	5	---
24	3'-0" x 7'-0" x 1-3/4"	INSUL. HM.	G	B	---	5	---
25	14'-0" x 14'-0" x 1-3/4"	INSUL. HM.	H	C	---	---	---
26	14'-0" x 14'-0" x 1-3/4"	INSUL. HM.	H	C	---	---	---
27	14'-0" x 14'-0" x 1-3/4"	INSUL. HM.	H	C	---	---	---
28	14'-0" x 14'-0" x 1-3/4"	INSUL. HM.	H	C	---	---	---
28	12'-0" x 10'-0" x 1-3/4"	INSUL. HM.	H	C	---	---	---

**NOTES:**  
 - COORDINATE KEYING OF HARDWARE WITH OWNER  
 - DOOR HANDLES TO BE LEVER HANDLE  
 - ALL DOORS TO MEET NCSBC SECTION 1609.1.2

- HARDWARE SETS**
- CLOSER MORTISE LOCK
  - PUSH PULL SET WITH CLOSER
  - ELECTRIC KEYPAD CLOSER
  - PASSAGE SET W/ CLOSER
  - PASSAGE SET
- SEE SPEC FOR MORE INFORMATION

DOOR SCHEDULE							
MARK	DOOR		FRAME			HWDR SET NO.	REMARKS
	SIZE	MAT'L	TYPE	TYPE	DETAILS		
1	3'-0" x 7'-0" x 1-3/4"	INSUL. HM.	A	A	---	1	BY PEMB
2	3'-0" x 7'-0" x 1-3/4"	INSUL. HM.	A	A	---	1	BY PEMB
3	3'-0" x 7'-0" x 1-3/4"	INSUL. HM.	B	A	---	1	BY PEMB
4	3'-0" x 7'-0" x 1-3/4"	INSUL. HM.	B	A	---	1	BY PEMB
5	3'-0" x 7'-0" x 1-3/4"	INSUL. HM.	B	A	---	1	BY PEMB
6	3'-0" x 7'-0" x 1-3/4"	INSUL. HM.	E	A	---	7	3 HR. RATED
7	3'-0" x 7'-0" x 1-3/4"	INSUL. HM.	E	A	---	7	3 HR. RATED
8	3'-0" x 7'-0" x 1-3/4"	SC. WD.	C	B	---	5	---
9	3'-0" x 7'-0" x 1-3/4"	SC. WD.	C	B	---	5	---
10	3'-0" x 7'-0" x 1-3/4"	SC. WD.	C	B	---	5	---
11	3'-0" x 7'-0" x 1-3/4"	SC. WD.	C	B	---	5	---
12	3'-0" x 7'-0" x 1-3/4"	SC. WD.	C	B	---	2	---
13	3'-0" x 7'-0" x 1-3/4"	SC. WD.	D	B	---	3	---
14	3'-0" x 7'-0" x 1-3/4"	SC. WD.	C	B	---	5	---
15	3'-0" x 7'-0" x 1-3/4"	SC. WD.	F	C	---	5	---

**NOTES:**  
 - COORDINATE KEYING OF HARDWARE WITH OWNER  
 - DOOR HANDLES TO BE LEVER HANDLE  
 - ALL DOORS TO MEET NCSBC SECTION 1609.1.2

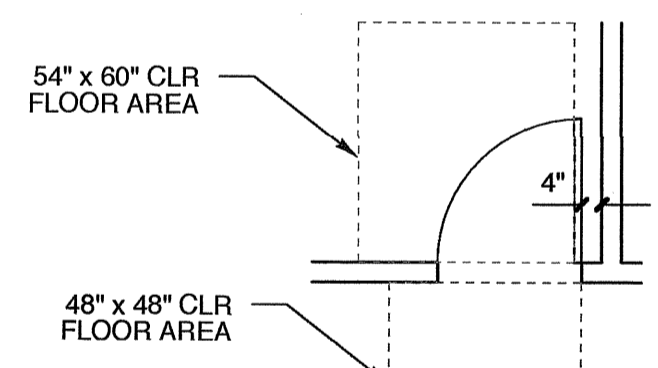
- HARDWARE SETS**
- CLOSER MORTISE LOCK
  - PUSH / PULL SET WITH CLOSER
  - ELECTRIC KEYPAD W/ CLOSER
  - PASSAGE SET W/ CLOSER
  - PASSAGE SET
  - PRIVACY SET
  - PASSAGE SET W/ CLOSER, DOOR WEATHER SEAL KIT, THRESHOLD, AND SWEEP
- SEE SPEC FOR MORE INFORMATION

ROOM FINISH SCHEDULE										
MARK	ROOM NAME	FLOOR	BASE	WALL			WAINSCOT	CEILING		REMARKS / NOTES
				N	E	S		MATERIAL	HGT.	
100	ENTRY HALL	VCT	RUBBER	PTD. DW.	---	---	ACC. TILE	9'-0"	---	
101	RECEPTION	VCT	RUBBER	PTD. DW.	---	---	ACC. TILE	9'-0"	---	
102	OFFICE	VCT	RUBBER	PTD. DW.	---	---	ACC. TILE	9'-0"	---	
103	OFFICE	VCT	RUBBER	PTD. DW.	---	---	ACC. TILE	9'-0"	---	
104	BREAK ROOM 2	VCT	RUBBER	PTD. DW.	---	---	ACC. TILE	9'-0"	---	
105	MEN'S	CONCRETE	RUBBER	PTD. DW.	---	---	ACC. TILE	9'-0"	---	
106	OFFICE	CARPET	RUBBER	PTD. DW.	---	---	ACC. TILE	9'-0"	---	
107	BREAKROOM	VCT	RUBBER	PTD. DW.	---	---	ACC. TILE	9'-0"	---	
108	OFFICE	CARPET	RUBBER	PTD. DW.	---	---	ACC. TILE	9'-0"	---	
109	HALL	VCT	RUBBER	PTD. DW.	---	---	ACC. TILE	9'-0"	---	
110	WOMEN'S	VCT	RUBBER	PTD. DW.	---	---	ACC. TILE	9'-0"	---	
111	SERVER	VCT	RUBBER	PTD. DW.	---	---	ACC. TILE	9'-0"	---	
112	OFFICE	CARPET	RUBBER	PTD. DW.	---	---	ACC. TILE	9'-0"	---	
113	OFFICE	CARPET	RUBBER	PTD. DW.	---	---	ACC. TILE	9'-0"	---	
114	CONFERENCE	CARPET	RUBBER	PTD. DW.	---	---	ACC. TILE	9'-0"	---	
115	CLOSET	CARPET	RUBBER	PTD. DW.	---	---	ACC. TILE	9'-0"	---	
115	CLOSET	CARPET	RUBBER	PTD. DW.	---	---	ACC. TILE	9'-0"	---	
115	CLOSET	CARPET	RUBBER	PTD. DW.	---	---	ACC. TILE	9'-0"	---	
115	SHOP	CONCRETE	RUBBER	PTD. DW. @ INT.	---	---	OPEN TO STRUCTURE	---	RUBBER BASE @ GBW	
119	COMPRESSOR	CONCRETE	RUBBER	PTD. DW. @ INT.	---	---	OPEN TO STRUCTURE	---	RUBBER BASE @ GBW	
120	STORAGE	CONCRETE	RUBBER	---	---	---	OPEN TO STRUCTURE	---	BROOM FINISH	

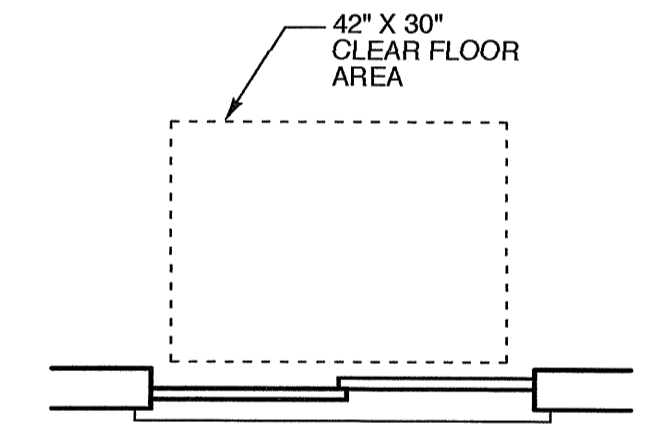
CONFIRM W/ OWNER

WINDOW SCHEDULE							
MARK	W	SIZE	H	TYPE	MATERIAL	GLASS	REMARKS
A	6'-0"	x	5'-0"	1	ALUMINUM	1" INSUL. LOW E GLASS	FIXED
B	4'-4"	x	4'-0"	2	ALUMINUM	TEMPERED	SLIDING LOCKABLE

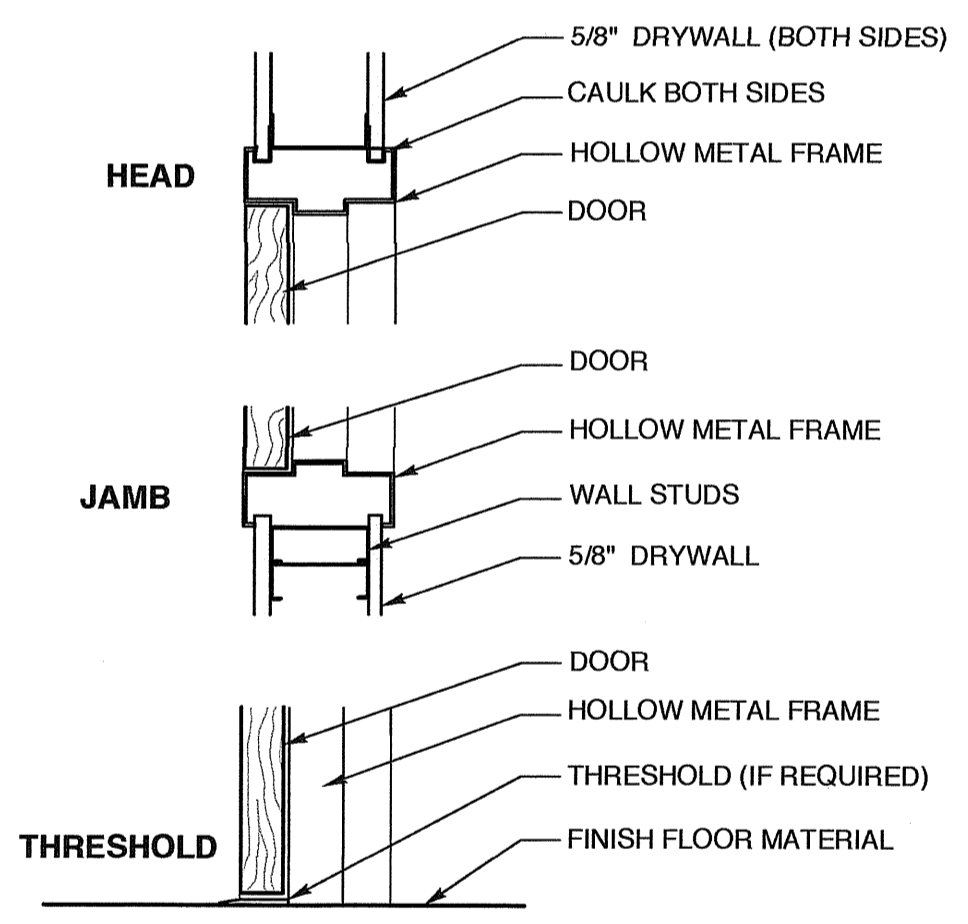
**NOTES:**  
 - SEE WINDOW TYPE ELEVATIONS AND DETAILS.  
 - FIELD VERIFY ALL EXISTING OPENING SIZES. DIMENSIONS GIVEN FOR REFERENCE.  
 - INCLUDE THERMAL BREAK PER MANUFACTURER'S STANDARDS WITH ALL FRAMES.  
 - ALL WINDOWS TO MEET NCSBC SECTION 1609.1.2



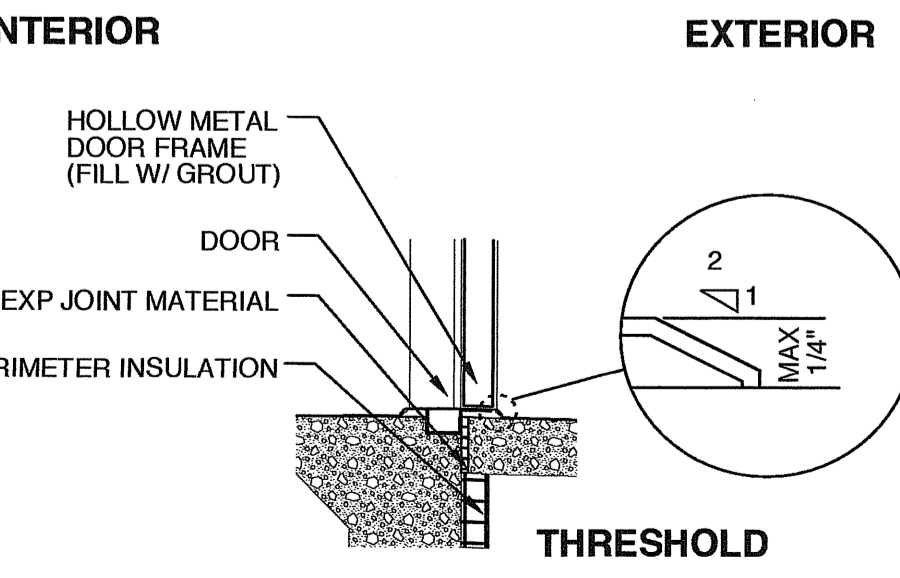
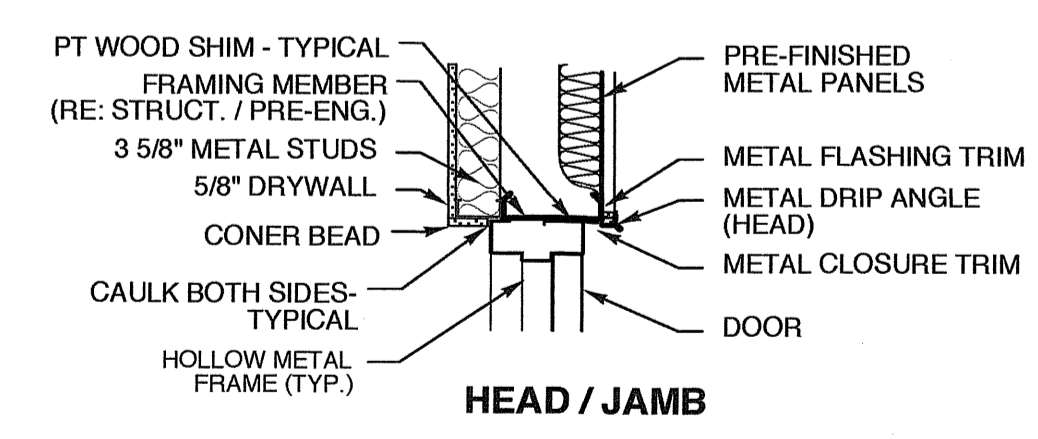
**8 TYP. DOOR LOCATION**  
 SCALE: 1/4" = 1'-0"



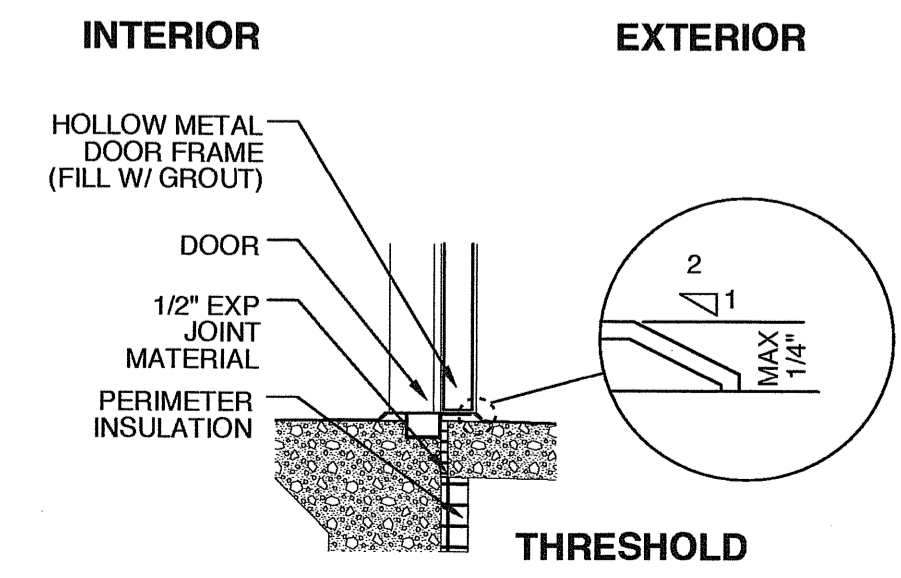
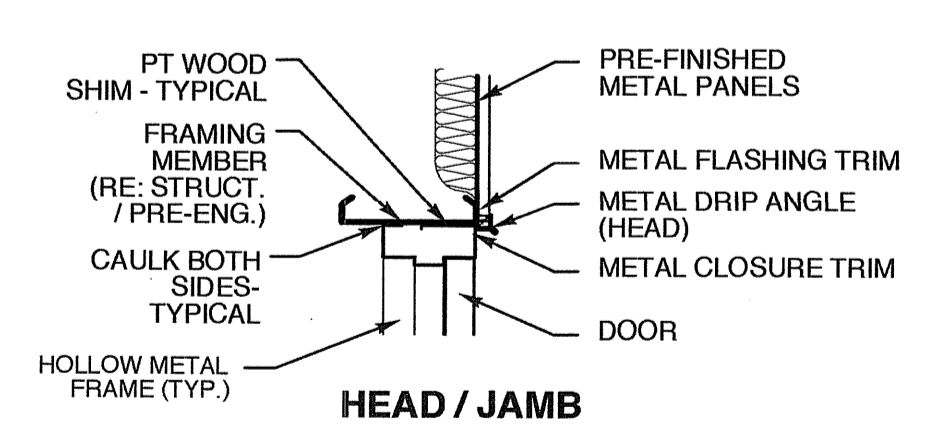
**7 PARALLELL APPROACH FOR WINDOW**  
 SCALE: 1/2" = 1'-0"



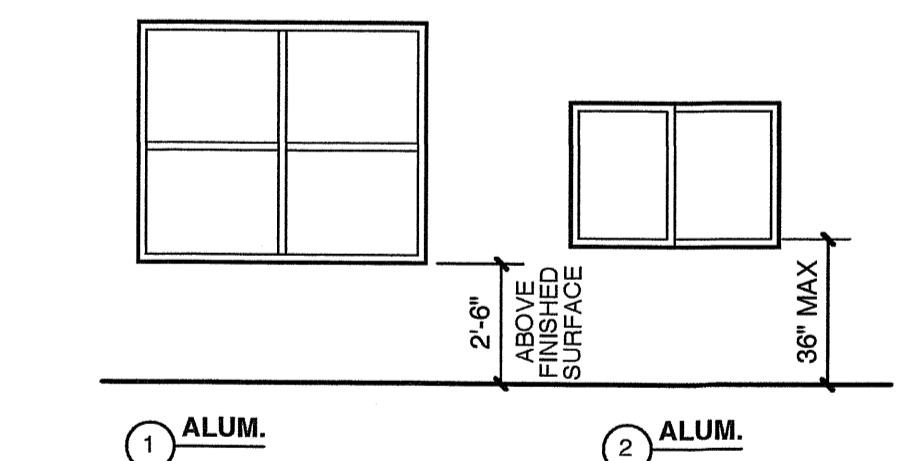
**6 INT. SOLID WOOD DOOR**  
 SCALE: 1/2" = 1'-0"



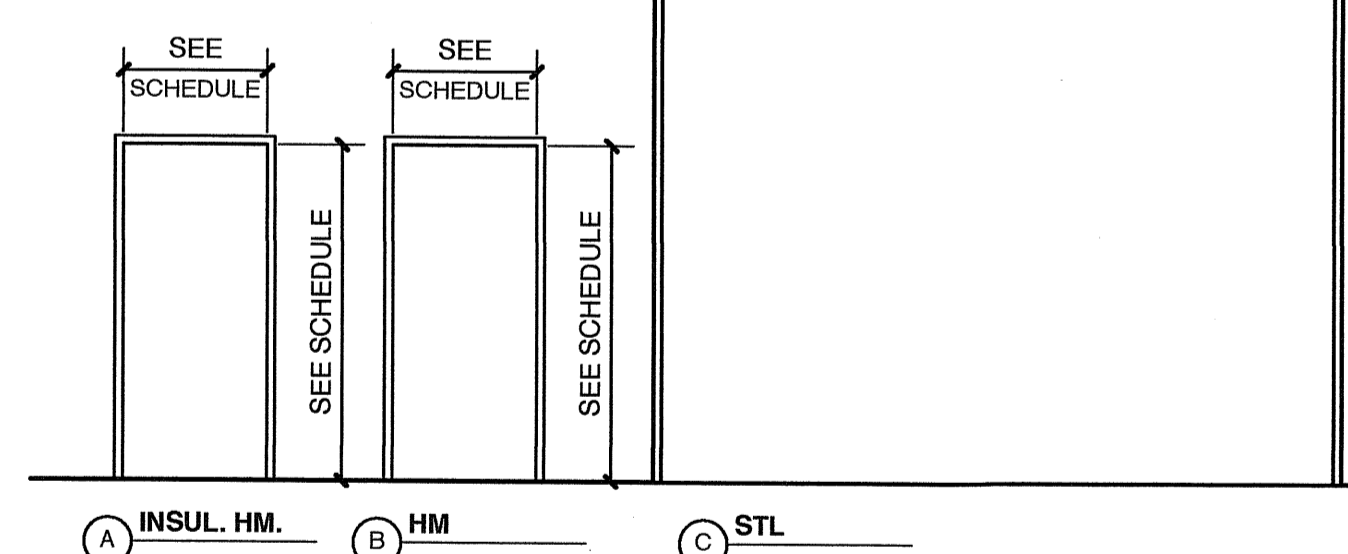
**3 ALUMINUM STOREFRONT WINDOW DETAIL**  
 SCALE: 3/4" = 1'-0"



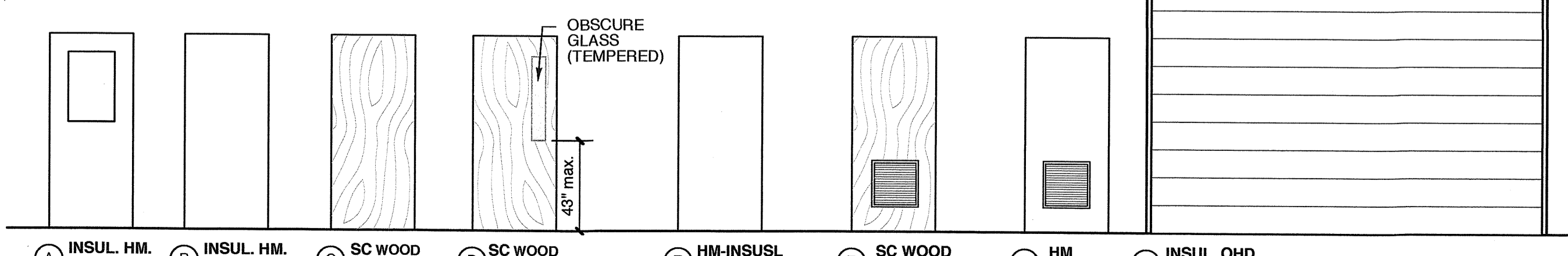
**2 HOLLOW METAL DOOR FRAME DETAIL**  
 SCALE: 3/4" = 1'-0"



**5 WINDOW TYPES**  
 SCALE: 1/4" = 1'-0"



**4 DOOR FRAME TYPES**  
 SCALE: 1/4" = 1'-0"



**1 DOOR TYPES**  
 SCALE: 1/4" = 1'-0"

**WEEKS TURNER ARCHITECTURE**

WEEKS TURNER ARCHITECTURE, PA  
 3305-109 Durham Drive  
 Raleigh, North Carolina 27603  
 919.779.9797 fax: 919.779.0826  
 www.weeksturner.com

**Ruffy Peedin**  
 COMMERCIAL DESIGN BUILD

5121 Kingdom Way, Suite 208  
 Raleigh, North Carolina 27607  
 919.459.8188  
 www.Ruffy-Peedin.com



PROJECT TITLE  
**G&D**

JARCO DRIVE  
 FUQUAY-VARINA, NORTH CAROLINA

PROJECT NO.  
**1842**

DRAWING TITLE  
**SCHEDULES**

SHEET **7** OF **7**

**A4**

PLOT DATE **4/1/19**  
 REVISION **00/00/08**

This original sheet is 24" x 36"; other dimensions indicate it has been altered.  
 All information on this sheet is the property of Weeks Turner Architecture and may not be duplicated in whole or in part without written authorization from Weeks Turner Architecture. 2008 ©