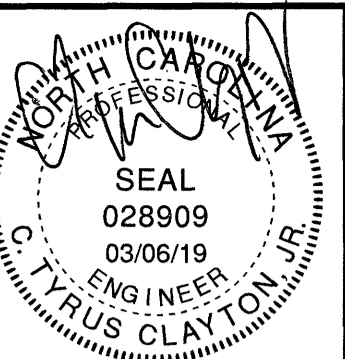


CAMPBELL ENGINEERING ANNEX II

DRB REVIEW PLANS

HARNETT COUNTY - NORTH CAROLINA

MARCH 2019



Draper Aden Associates
 Engineering • Surveying • Environmental Services
 10011 Cumberland Campus
 910 Main Campus Drive, Suite 151
 Raleigh, NC 27608
 919-827-0884 Fax: 919-839-9138
 NC Firm License # C-081

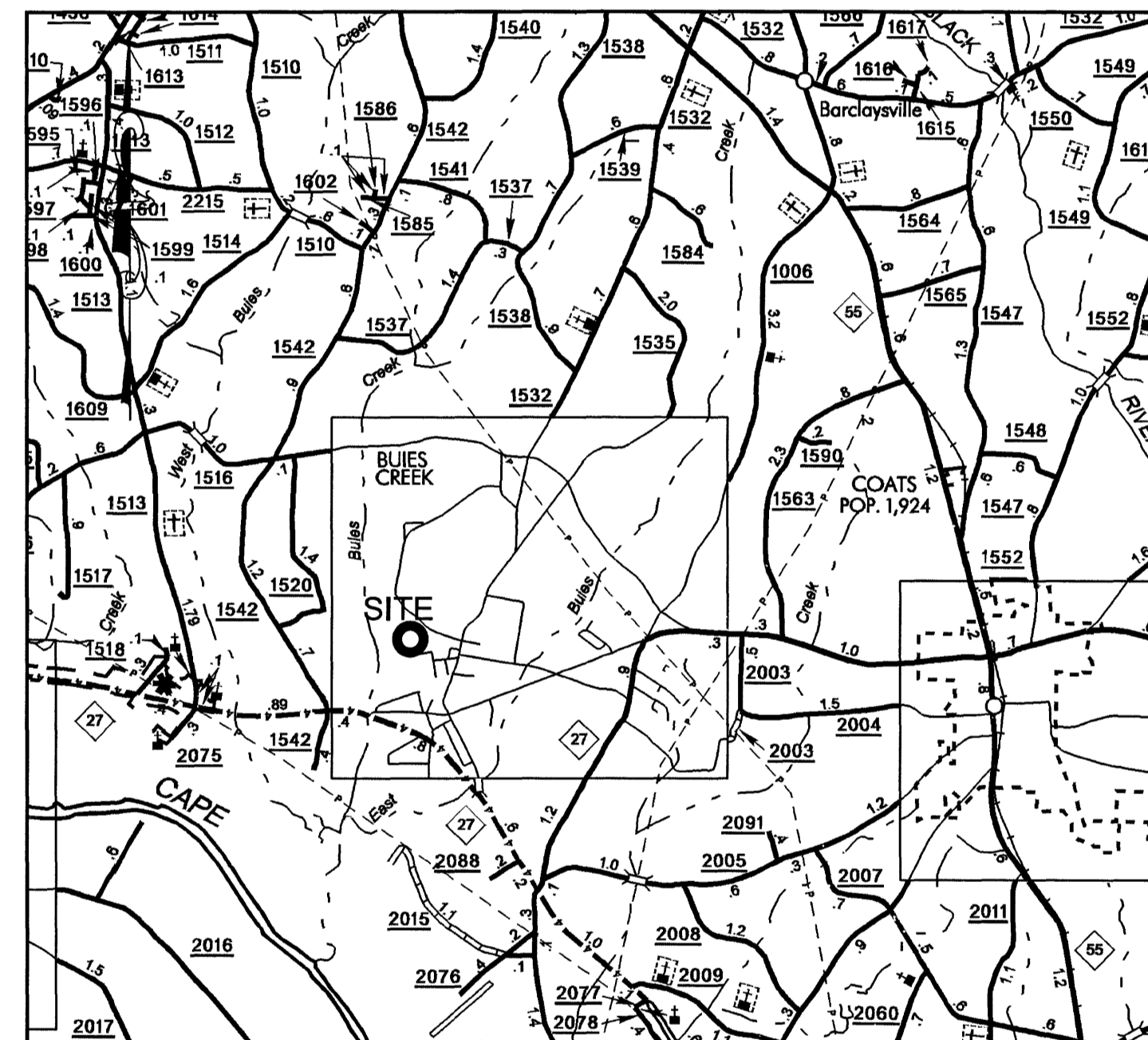
• Hampton Roads, VA
 • Fayetteville, NC
 • Northern Virginia
 • Blacksburg, VA
 • Charlottesville, VA
 • Virginia Beach, VA

COVER
CAMPBELL ENGINEERING ANNEX II
 BLUES CREEK - HARNETT COUNTY, NORTH CAROLINA

REVISIONS
 05/01/19 - PER
 HARNETT COUNTY
 DRB

DESIGNED BY: JAJ
 DRAWN BY: JAJ
 CHECKED BY: CTC
 SCALE: NO SCALE
 DATE: 03/06/2019
 PROJECT NUMBER:
 17080496-02
C1.0

PROJECT INFORMATION	
NAME OF PROJECT:	CAMPBELL UNIVERSITY ENGINEERING ANNEX II
CONTRACTOR:	SOUTHEASTERN INTERIORS ATTN: BRETT STRICKLAND 228 AIRPORT ROAD ERWIN NC 28339 910-893-8486
ENGINEER:	DRAPER ADEN ASSOCIATES ATTN: C. TYRUS CLAYTON, JR., PE 930 MAIN CAMPUS DRIVE, SUITE 151 RALEIGH, NC 27608 919-827-0864
PIN:	0670-75-8602
DEED REFERENCE:	MB 2017 PG 130
ZONING:	O-1
FLOOD CLASSIFICATION:	ZONE X, FIRM 3720066000J, UPDATED 2006
WATERSHED CLASSIFICATION:	WS-IV
DISTURBED ACREAGE:	0.26 ACRES
PROJECT IMPERVIOUS AREA:	5,450 sf
TOTAL PROPOSED CAMPUS IMPERVIOUS %:	14.91% (PREVIOUSLY 14.86% PER CU DEVELOPMENT PLAN BY SURFACE 678 (2015))
LANDSCAPE BUFFER:	TYPE C
E&S CONTROL PLAN APPROVAL:	NOT REQUIRED - LESS THAN 1 ACRE DISTURBED
LAND USE CLASSIFICATION:	COMPACT MIXED USE
O&I BUILDING SETBACKS:	25' PERIMETER PROPERTY LINE 35' FROM STATE MAINTAINED R-O-W



VICINITY MAP
NOT TO SCALE

Sheet List Table	
Sheet Number	Sheet Title
C1.0	COVER
C2.0	PRELIMINARY SITE PLAN
C3.0	SITE & UTILITY DETAILS

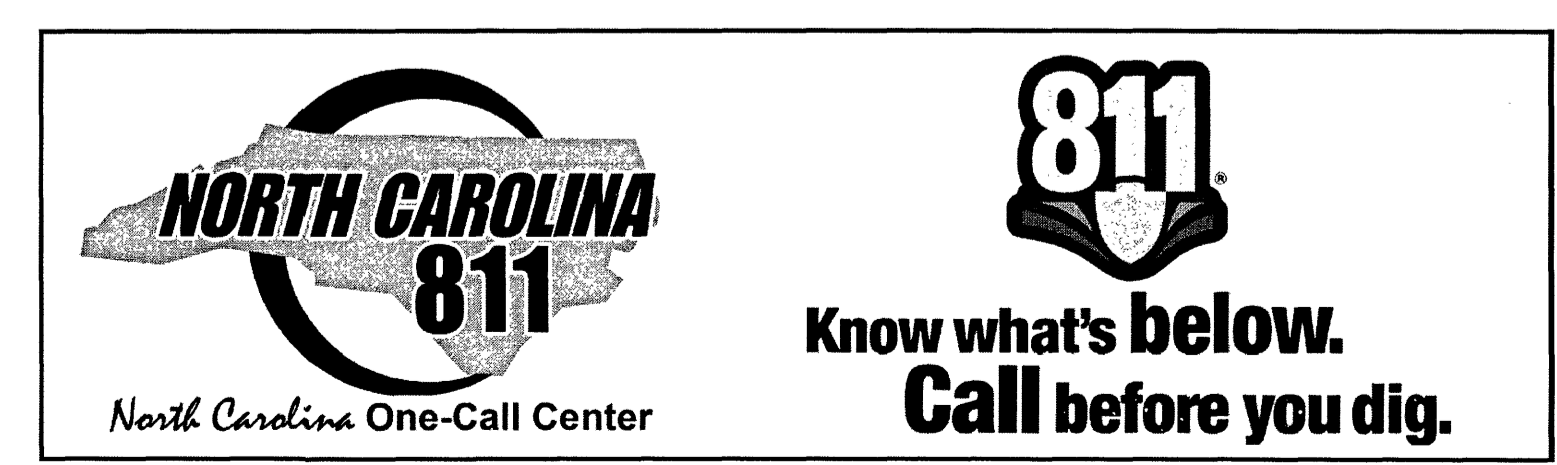
DRAPER ADEN ASSOCIATES REVIEW

THESE PLANS HAVE BEEN SUBJECTED TO TECHNICAL AND QUALITY REVIEWS BY:

NAME: J. AUSTIN JACKSON, E.I.T. *J. Austin Jackson* 05/01/2019
 PROJECT DESIGNER SIGNATURE DATE

NAME: C. TYRUS CLAYTON JR., P.E. *C. Tyrus Clayton Jr.* 5/1/19
 PROJECT MANAGER SIGNATURE DATE

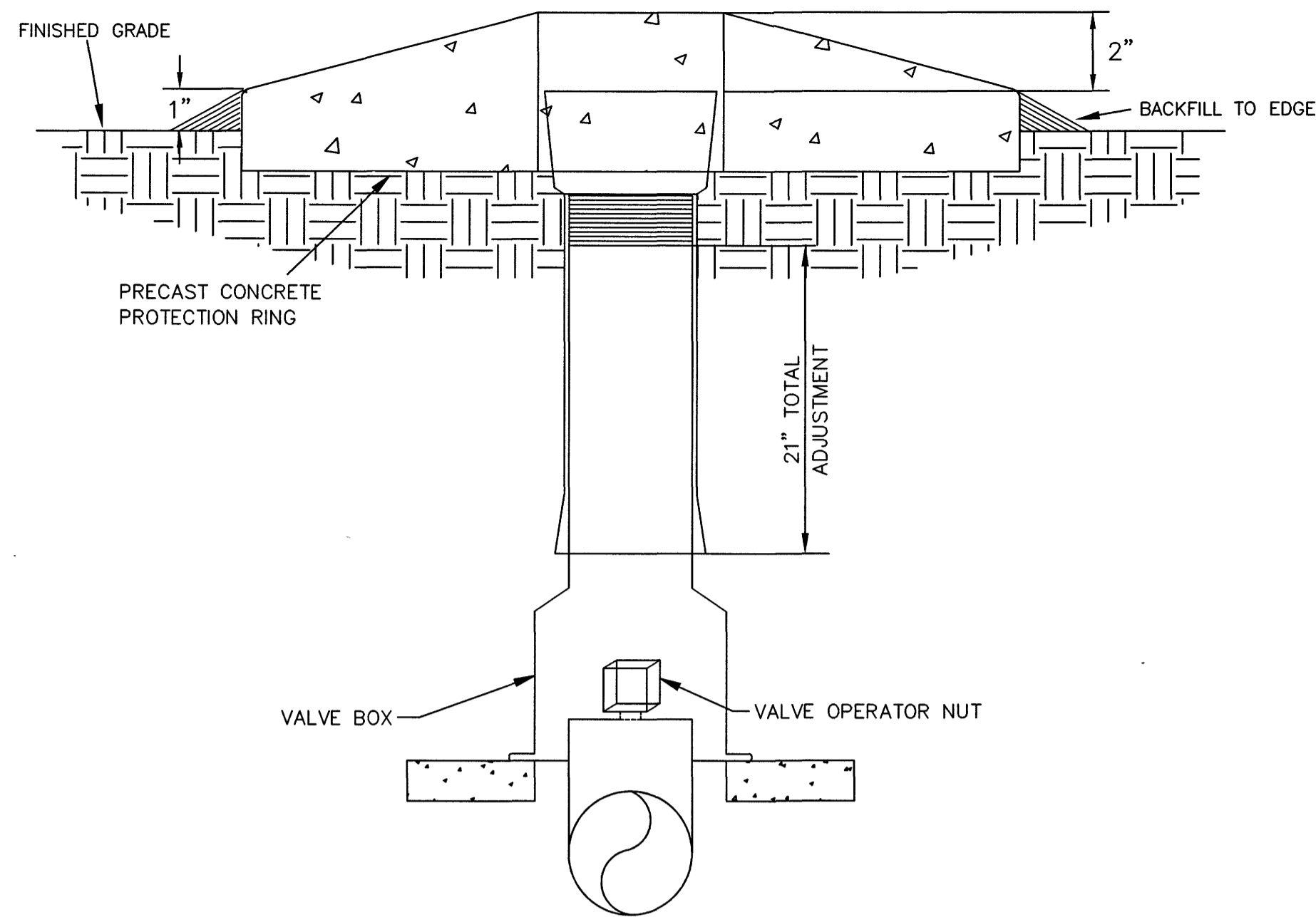
NAME: ANDREW MERICLE, P.E. *A. Mericle* 5/1/19
 QUALITY REVIEWER SIGNATURE DATE



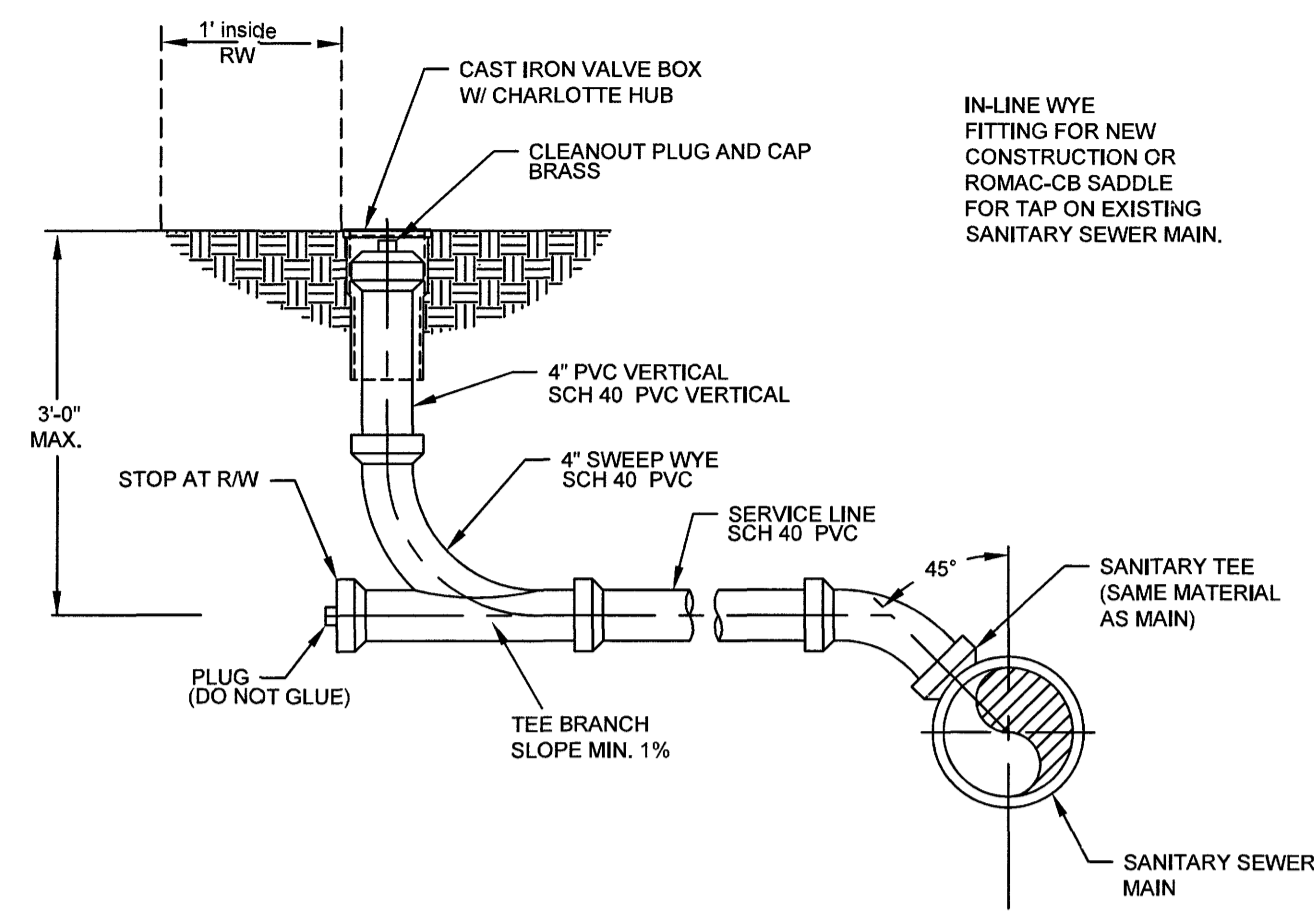
AS THE OWNER OF RECORD, I HEREBY FORMALLY CONSENT TO THE PROPOSED DEVELOPMENT SHOWN ON THIS SITE PLAN AND ALL REGULATIONS AND REQUIREMENTS OF THE HARNETT COUNTY ORDINANCES

DATE _____ OWNER SIGNATURE _____

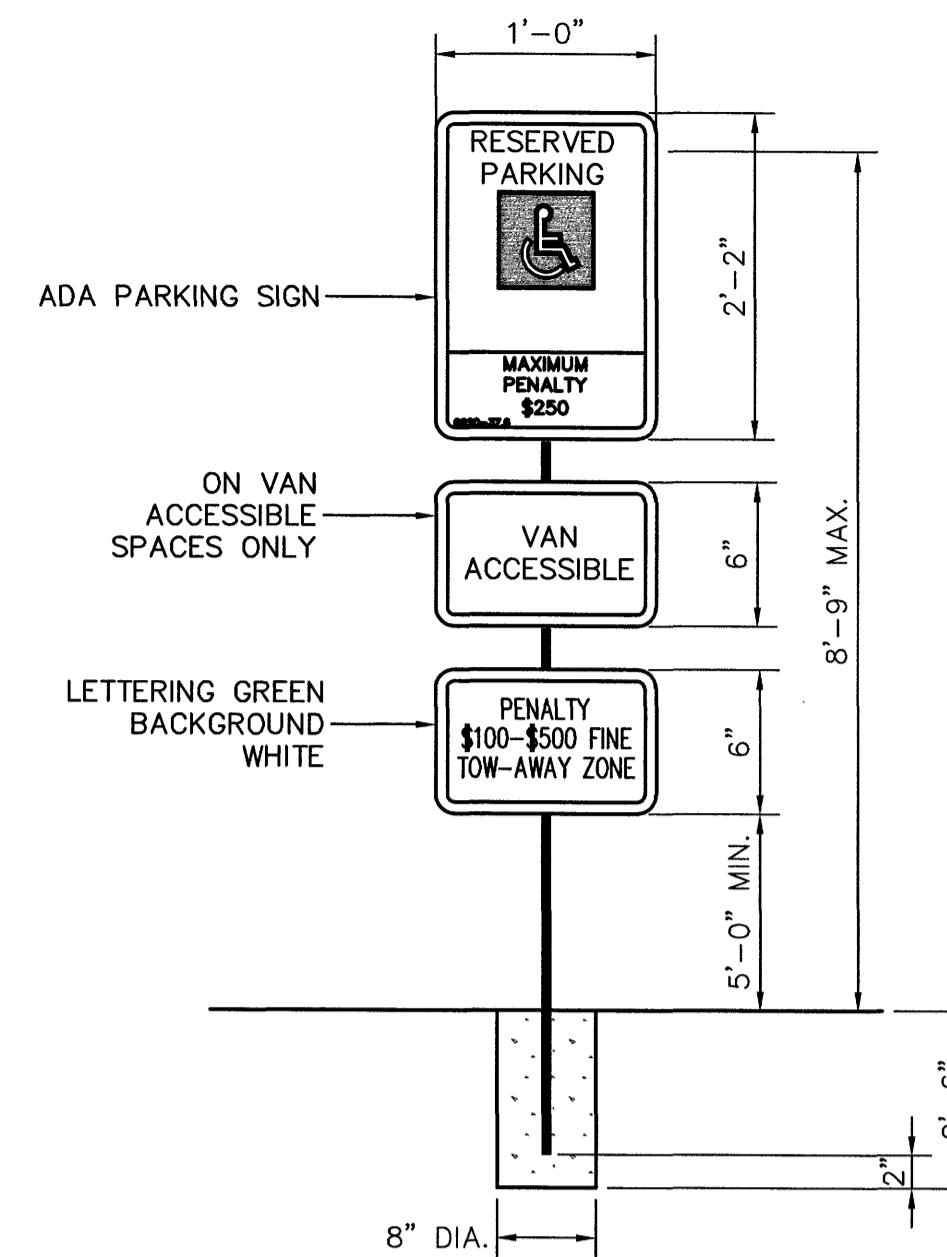
P:\2017\17080496-02\CAD\17080496-02\C1.0\COVER.dwg May 1, 2019 4:51:19 PM



TYPICAL VALVE BOX DETAIL W
NO SCALE 2

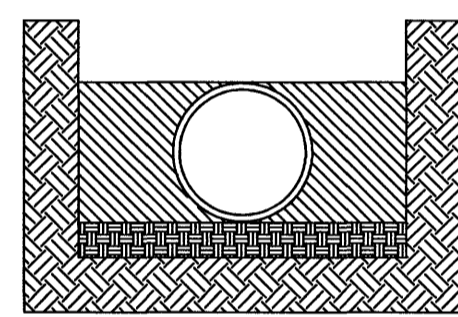


TYPICAL SEWER SERVICE CONNECTION DETAIL
NO SCALE



ADA VAN ACCESSIBLE SIGN DETAIL
NO SCALE

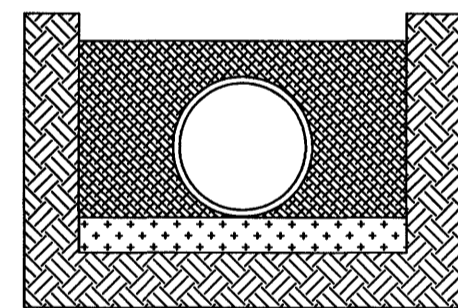
LAYING CONDITIONS	DESCRIPTION	PROJECT USE
-------------------	-------------	-------------



TYPE 3

PIPE BEDDED IN 4" MINIMUM JOB EXCAVATED MATERIAL. BACKFILL LIGHTLY CONSOLIDATED TO TOP OF PIPE.

ALL DUCTILE IRON GRAVITY SEWER LINE.



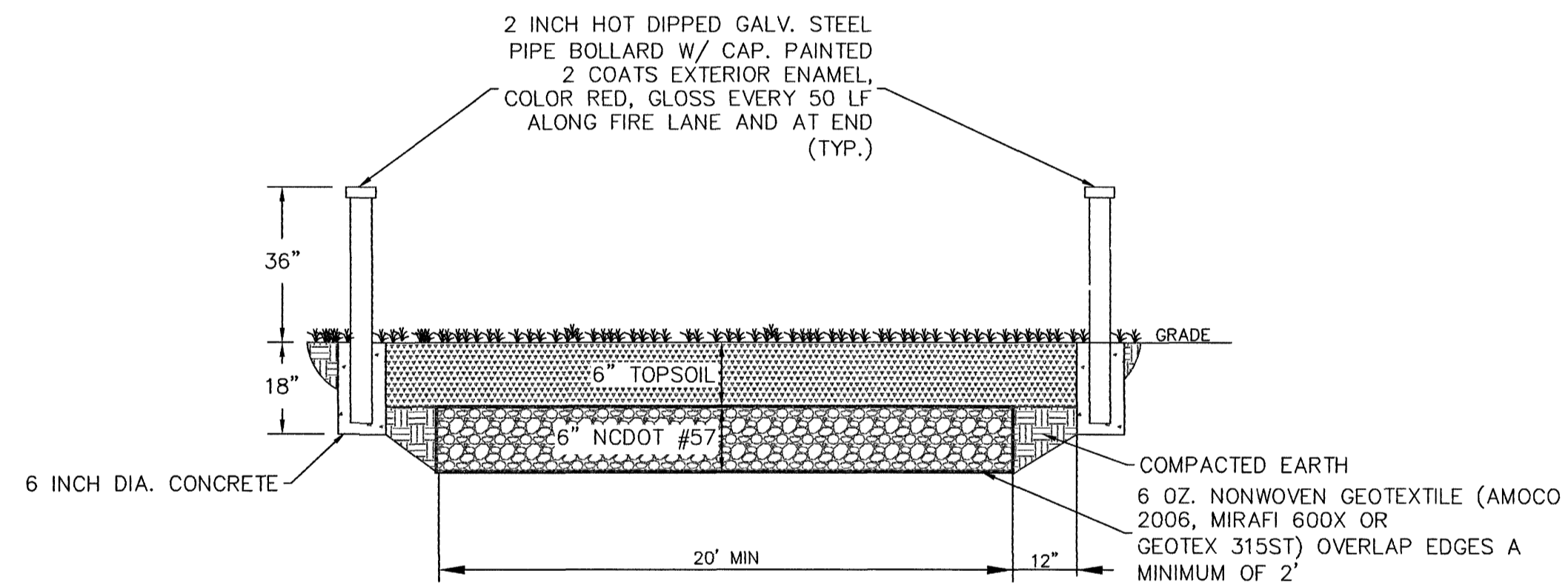
TYPE 4

PIPE BEDDED IN SAND, GRANULAR MATERIAL OR GRADED GRAVEL TO THE DEPTH OF 1/8 PIPE DIAMETER, 4" MIN. JOB EXCAVATED MATERIAL COMPACTED TO 4" ABOVE TOP OF PIPE. (APPROX. 95% STANDARD PROCTOR, AASHTO T-99)

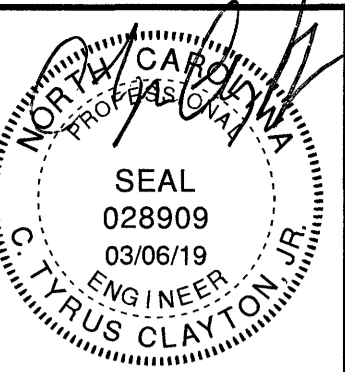
ALL PVC WATER LINE AND PVC FORCE MAIN.

TYPICAL LAYING CONDITIONS DETAIL W
NO SCALE 11

NOTE: TYPES 1, 2, AND 5 ARE NOT SHOWN FOR BREVITY



FIRE ACCESS ROAD DETAIL
NO SCALE



Draper Aden Associates
Engineering • Surveying • Environmental Services

NC State Professional Engineer
930 Main Campus Drive, Suite 101
Raleigh, NC 27606
919.852.3315
www.daa.com
NC Firm License # C-0881

• Hampton Roads, VA
• Fayetteville, NC
• Richmond, VA
• Blacksburg, VA
• Northern Virginia
• Charlottesville, VA
• Virginia Beach, VA

SITE & UTILITY DETAILS
CAMBELL ENGINEERING ANNEX II
BLUES CREEK - HARNETT COUNTY, NORTH CAROLINA

REVISIONS
05/01/19 - PER
HARNETT COUNTY
DRB

DESIGNED BY: —
DRAWN BY: JAJ
CHECKED BY: CTC
SCALE: NOT TO SCALE
DATE: 03/06/2019
PROJECT NUMBER: 17080496-02

C3.0